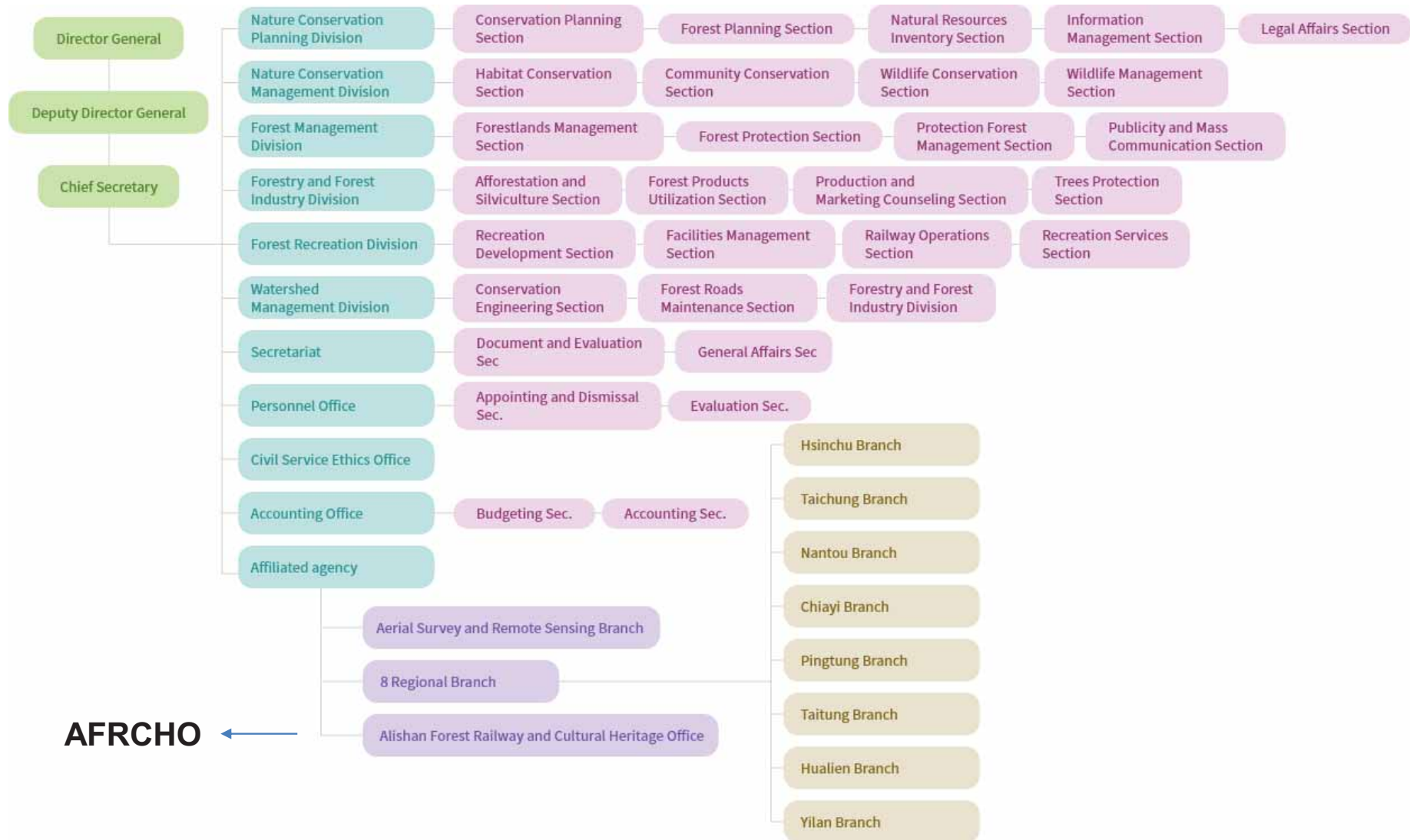


Experience the Beauties in the Journey

Exploring Alishan through the century-old Forest Railway

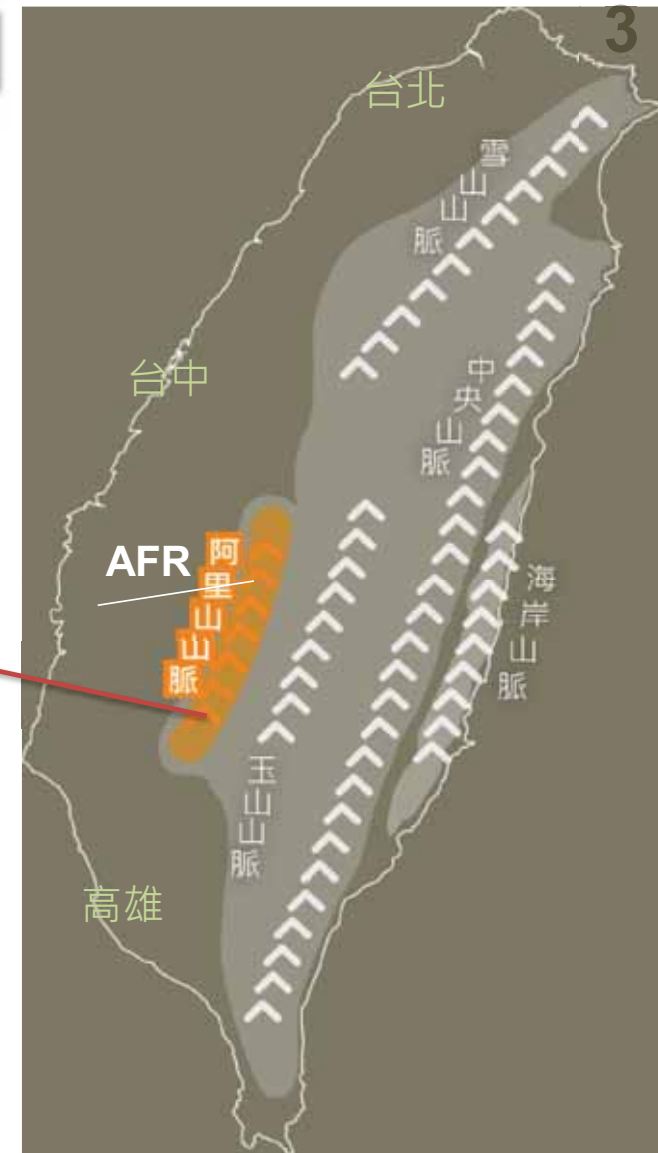
About the Forestry and Nature Conservation Agency



Alishan Mountain Range and the Location of AFRCHO



Alishan mountain range consists of 18 medium-elevated mountain systems. Tashan is the highest among all. With the elevation of 300-2600 meters, it is the spiritual mountain for the Tsou tribes.





Introduction to Alishan Forest Railway and Cultural Heritage Office

Since
1912

AFRCHO
Established
Since 2018

Nationwide
Significant
Cultural
Landscape
by MOC in 2019

762mm
Track Gauge

78km
Operative Length

20
Railway Stations

16
Diesel Loco
(In service)

3
SHAY Loco
(In service)

6.25%
Max Gradient

35 Meters
Min Radius

74
Bridges

47
Tunnels

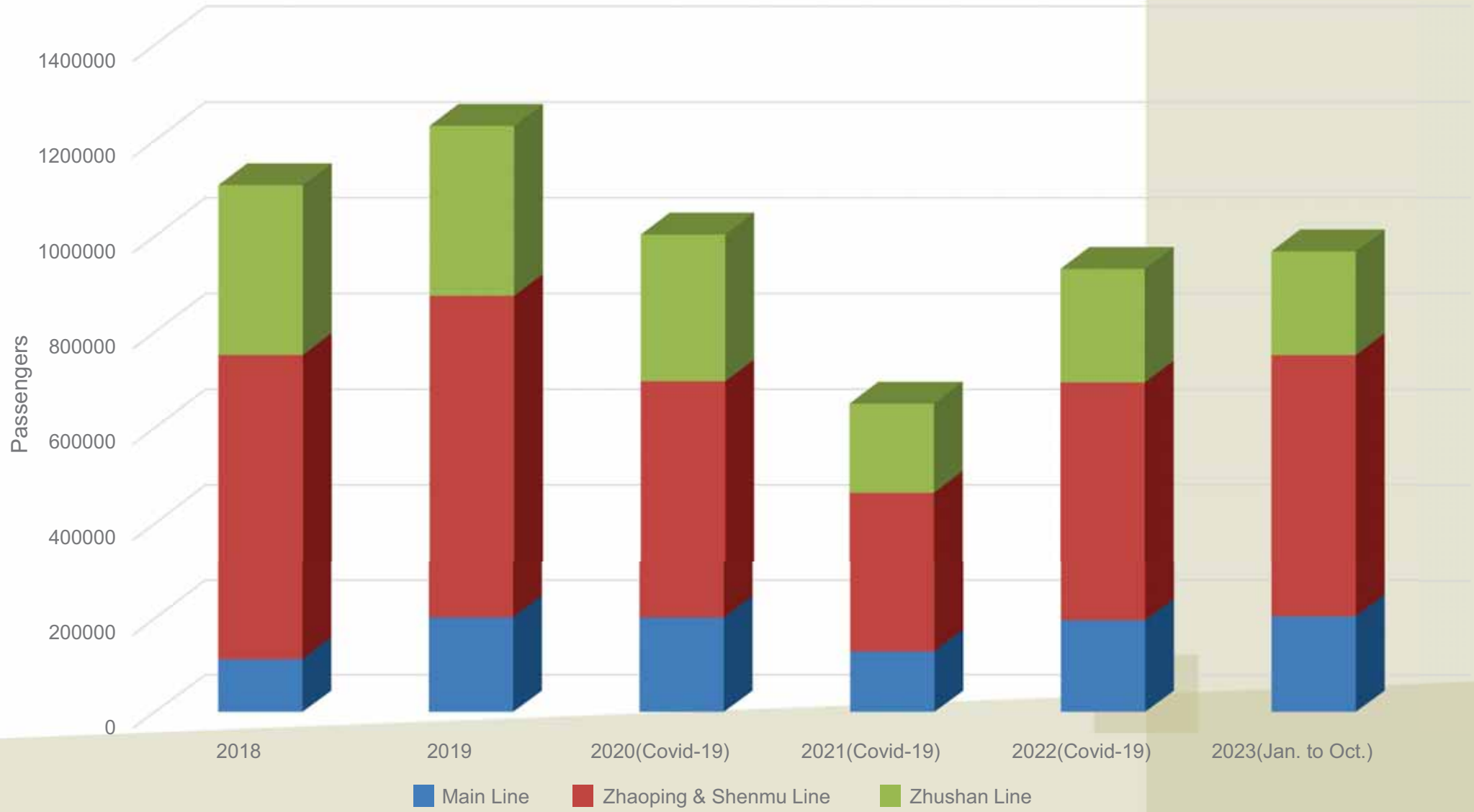
359
Employees

74
Volunteers

9
Sister Railways
in 5 Countries



Forestry and Nature Conservation Agency
Alishan Forest Railway and Cultural Heritage Office





Railway Stations and Route



Reconstruction of the Tunnel No. 42
Full Length Re-opening Expected in the 2nd half of 2024



5 Factors of Alishan Forest Railway

Ecology



Forestry
Development



Railway
Techniques



Inhabited
Lives



Humanities
& Memories



Alishan National Forest
Recreation Area
Former Logging regions in
Japanese colonial era



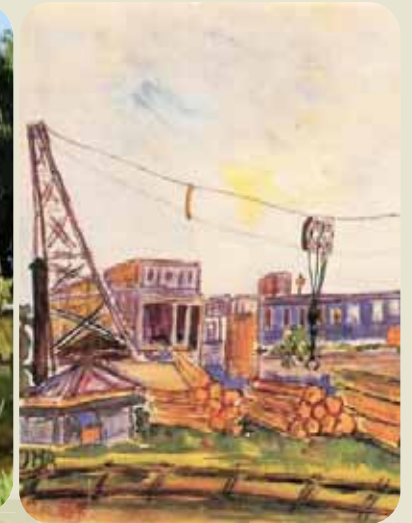
Sawmill for timber
processing



Railway Technique
(Horseshoe Curve)

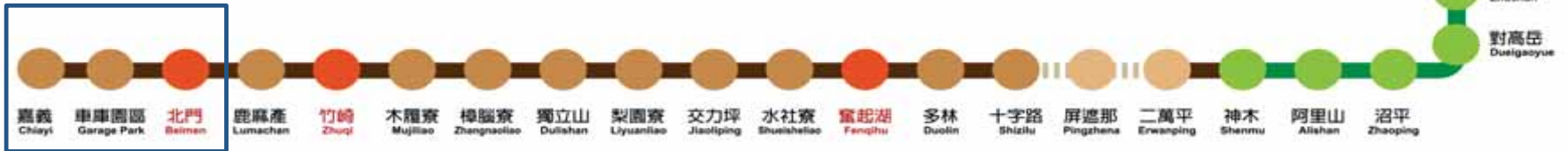


Dormitory
for sawmill workers



Chiayi Sawmill
under the
paintbrush of Chen
Cheng-Bo

Forestry Cultures



Chiayi Sawmill



Lumber factory



Hinoki Village

Local Cuisine



Chicken Rice



Overhead crane



Chiayi Loco Shed Park

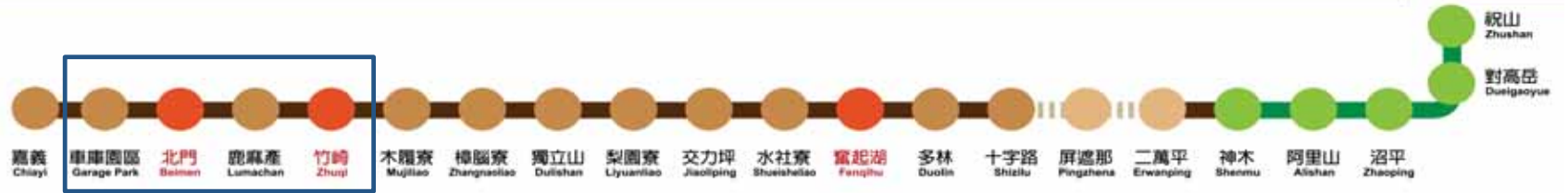


Song of the Forest



Fish head casserole

Railway Cultures



Zhuqi station



Triangle



Alishan train running across the bridge



Railway turntable

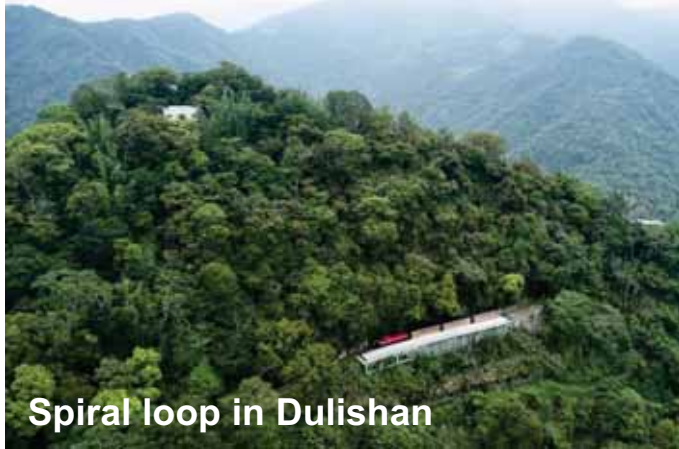
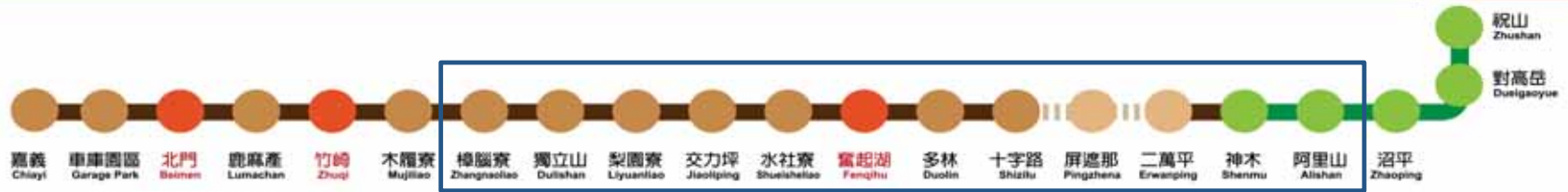


Coal stage

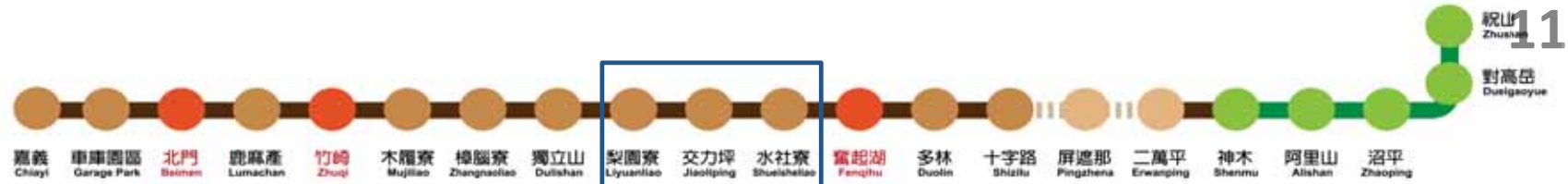


Loco Display in Loco Shed

Railway Techniques



Ecology & Tea Culture



Autumn Scene – Migration of Eastern Cattle Egret over Liyuanliao



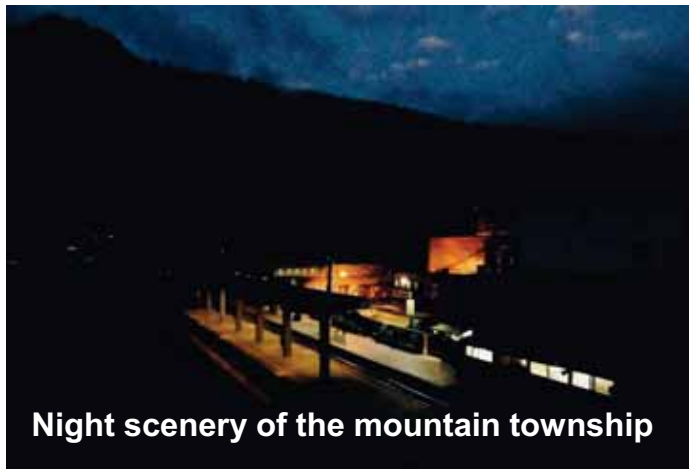
Fireflies along the rail - Liyuanliao



Experience of Alishan Tea Culture
The Journey of Ecology



Forest Therapy



Discover Aboriginal Experiences



Tsou Indigenous people in Laiji Tribe



De-en-ya-na Community



Tsou Fo'na Festival



Home for Formosan Wild Boar



Tsou Fo'na Festival



Roasted Formosan Wild Boar, Vegetable, Sausages, Bamboo rice



Dinning over the water - Tanayiku



Camp Fire

Strolling over the cloud



Watching Sunrise in Zhushan



Zhushan station



Spring



Autumn



Mikado Pheasant
Taiwan endemic species



Sunset and Sea of Cloud



Dueigaoyue Trail



Sunrise

Scheduled Services



Main Line (Chiayi to Shizilu)



Branch Line



(Alishan National Forest Recreation Area)



Chart Train Services



Customized Experience Charter Your Own Private Train



Japanese Railway Enthusiast



Cypress Train



Australian and British Railway
Photography Group



British Railway Enthusiast



Autumn leaves special services



SHAY 18 & 28 Tons Steam Locomotives

	18 Tons Steam Locomotive	28 Tons Steam Locomotive
Serial No.	No. 12-18 (SHAY 14 is a member of 18T steam loco)	No. 21-32
Year of Manufacturing	1910-1913	1912-1917
Special Structure	<ul style="list-style-type: none"> ➤ 2 Vertical Cylinders ➤ Diamond-shaped Chimney ➤ Compressor and Gas Tank balanced on left and right side 	<ul style="list-style-type: none"> ➤ 3 Virtual Cylinders ➤ Cylindric Chimney ➤ Additional feed water preheater ➤ Compressor and Gas Tank located on left hand side

Restoration of SHAY 21

- Preserving traditional technique, such as coal burning boiler and pipe expanding techniques
- Reproduction of technical drawing, database establishment, inheriting technique and experience



Formosensis

Formosensis

Combines Formosa and *Chamaecyparis Formosensis*
Meaning a blessed forest in Taiwan



Vivid Express

- Designed with the color of Collared bush robin, the welcoming bird of Alishan. It represents the rich natural resources in Alishan.
- With the meaning of delightful and best wishes, it is wished to create wonderful future with the passengers.



Innovated train design



Rotatable viewing seats



Color developed from the male bird of Collared bush robin.



**Create your unique memory with Alishan
Look Forward to your visit**

