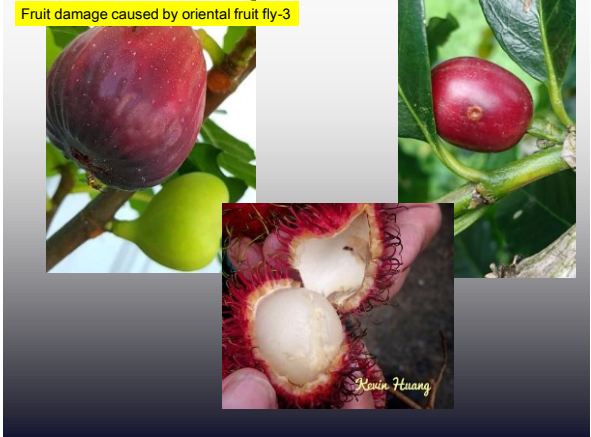
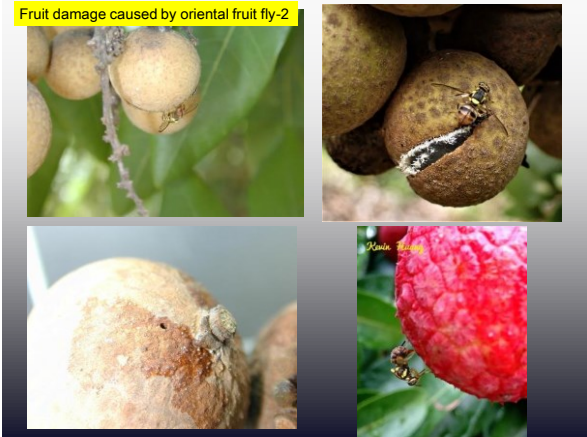
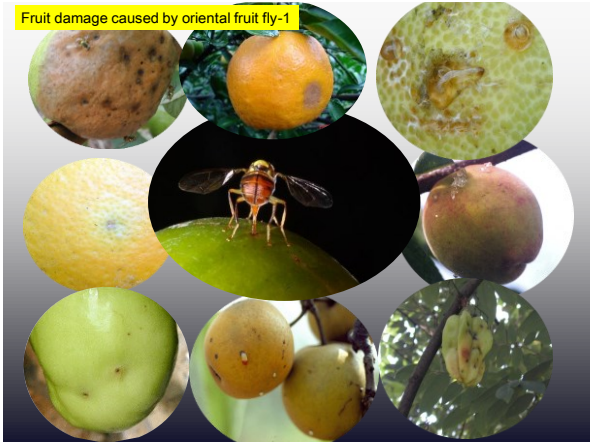
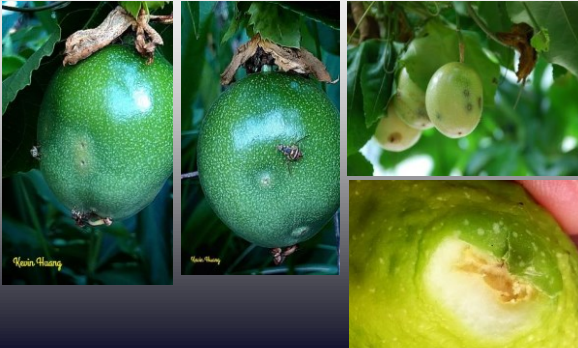


# The concept of Area-Wide Integrated Pest Management (AW-IPM) of Oriental Fruit Fly

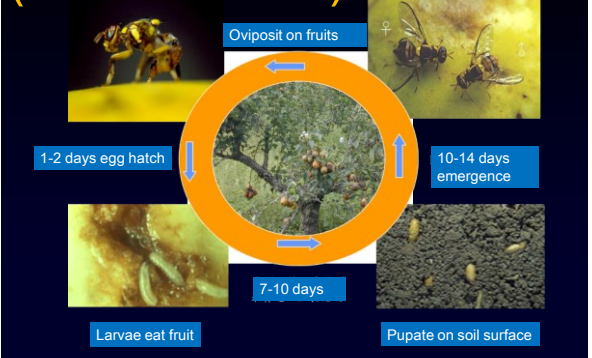


Fruit damage caused by oriental fruit fly-6

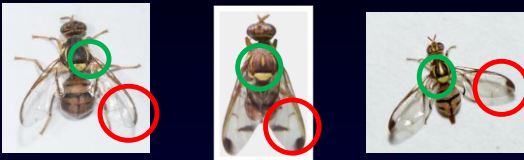
passion fruit



The life cycle of oriental fruit fly (*Bactrocera dorsalis*)



*Bactrocera dorsalis* vs. *Zeugodacus cucurbitae* vs. *Zeugodacus tau*  
(oriental fruit fly) (melon fly)



The habitats of oriental fruit fly



Wild fruit trees and non-scale fruit production also make habitats

How to control and manage oriental fruit fly?

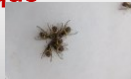
The application of insect attractant

- 1.sex pheromones (from insect)
- 2.sex attractant (from plant)
- 3.food attractant (existing in nature)
- 4.Plant-based attractant (spawning attractant)

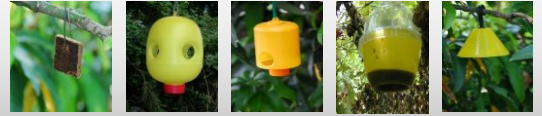


### Male Annihilation Technique

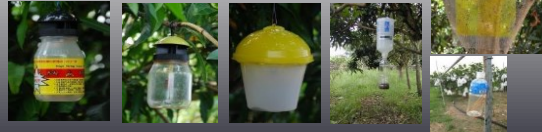
- Multiple mating
- Male releases sex pheromone to mate
- Suitable for large area



### Insect traps



1. 粘板 2. Formosa Trap 3. 中興誘蟲器 4. 多式誘蟲器 5. 傘式誘蟲器



6. 兩翅式誘蟲器 7. 一葉牌誘蟲器 8. 長效性誘蟲器 9. 中成式誘蟲器 10. 自行製作誘蟲器

### Why Area-wide Integrated Pest Management works?

