



Company Presentation

September 2022



erion

Table of Contents

Origin of the Company

Current Situation

Working Locations

Erion's Display

Erion France Workshop

Fleet Maintained by Erion

ECM Certification

International Certifications

Services

Evolution



Origin of the Company

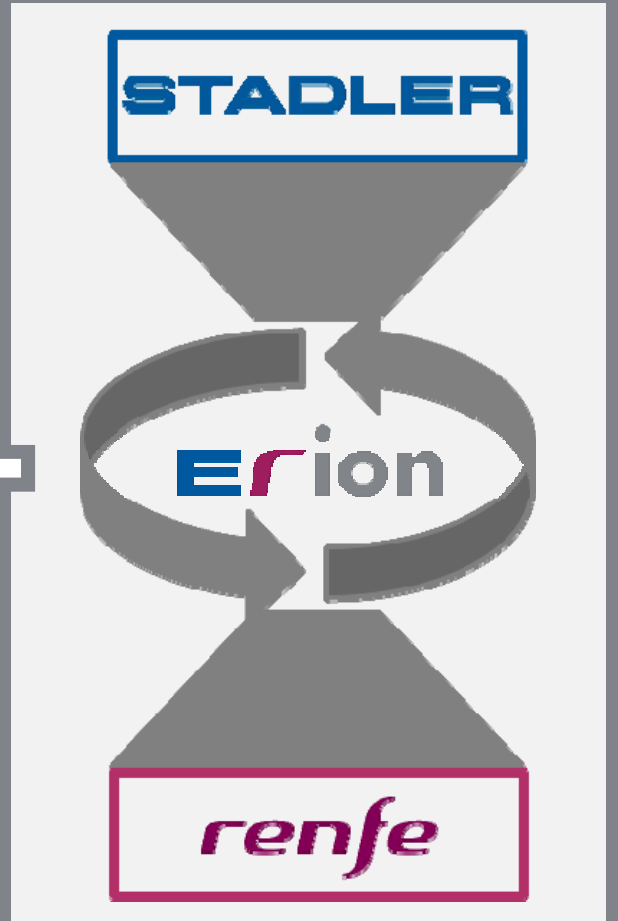
ERION Mantenimiento Ferroviario, S.A. was founded in January 2007, being its stakeholders **STADLER Rail Valencia** (51%) and **RENFE Operadora** (49%).

The Company Board of Directors is evenly divided, with one-half of the members designated by **STADLER** and the other half by **RENFE**. This arrangement allows the two shareholders to share the management of the company's operations while taking advantage of the synergies created by the **manufacturing, technological and maintenance experience of STADLER** and the **maintenance expertise and resources of RENFE**.

ERion France S.A.S.

ERION France S.A.S. has been created in March 2012 with 100% capital of ERION Mantenimiento Ferroviario S.A..

The Supervisory Board of the Company is composed of the members of the Board of Directors of **ERION Mantenimiento Ferroviario S.A.**, what allows the Company to have at its disposal all the means and potentials of **ERION Mantenimiento Ferroviario** and its stakeholders **STADLER** and **RENFE**.



Synergies with Stakeholders

Renfe

+100 years of experience in railway sector

Operational capacity
(as supplier & as subcontractor)

Strong geographical presence
(own workshops)

Operational mastery of components maintenance
(diesel engine, axle, brakes, etc.)

Stadler

Railway vehicles' manufacturer

Engineering support

Operational support
(accidental & transformations & as supplier)

Services support
(ROE other projects)

Current Situation

Currently **ERION Mantenimiento Ferroviario S.A.**, **ERION Sucursal em Portugal** and **ERION France S.A.S.** provide Rolling Stock Maintenance Services in the Iberian Peninsula to **3 Public Operators** and **10 Private Operators**, and to **3 Private Operators** in France who operate across France, Belgium and Germany.

ERION has contracts to maintain a fleet of more than **200 railway vehicles** that yearly run more than **20.000.000 kilometres**.



Working Locations

Spain



Fuencarral



Lleida



Preventive in other facilities



24h Technical Assistance

Portugal



Poceirão



Preventive in other facilities



24h Technical Assistance

France



Montceau les Mines



Satellites (North, South, East)

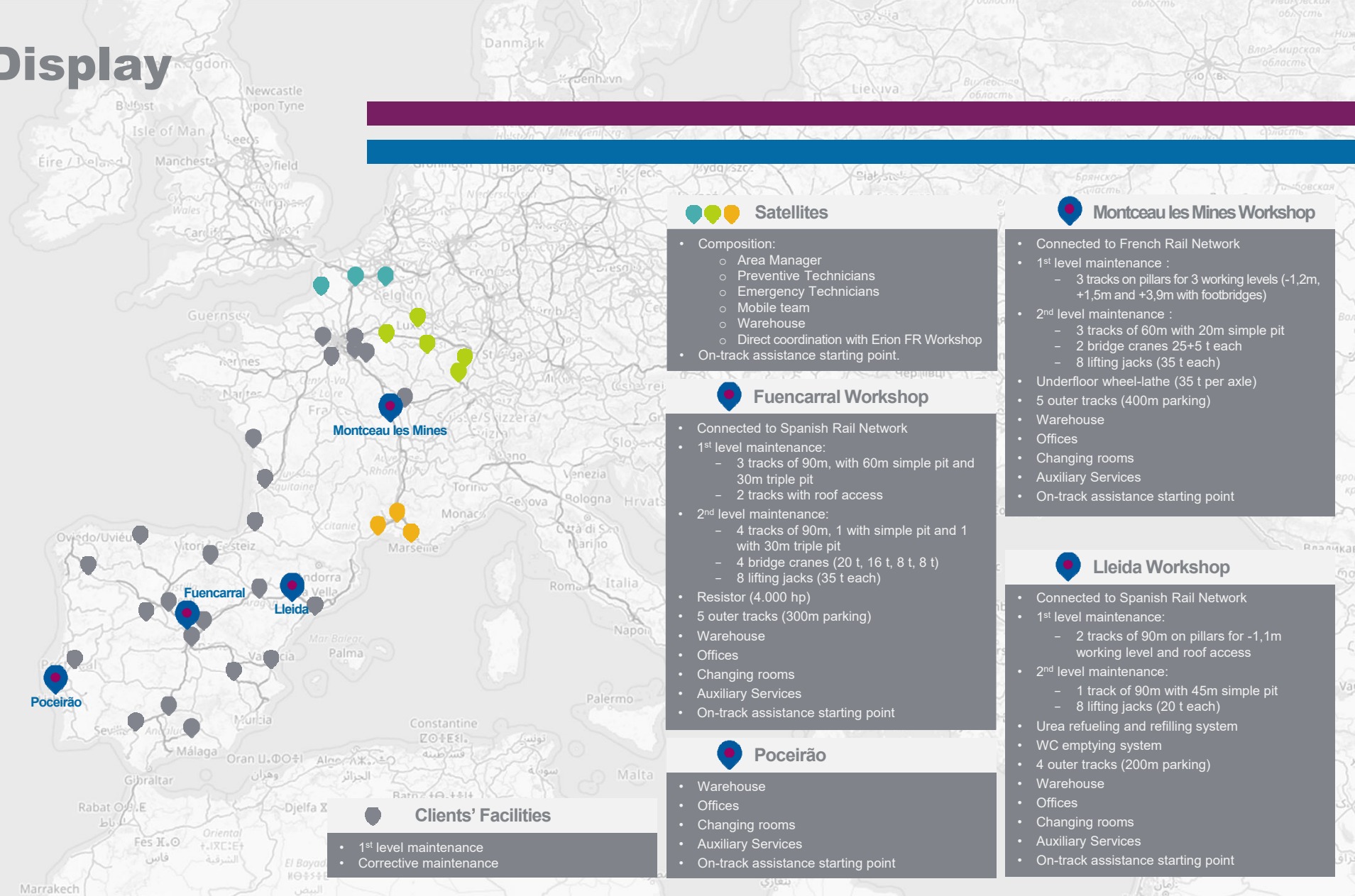


Preventive in other facilities



24h Technical Assistance

Erion's Display



Satellites

- Composition:
 - Area Manager
 - Preventive Technicians
 - Emergency Technicians
 - Mobile team
 - Warehouse
 - Direct coordination with Erion FR Workshop
- On-track assistance starting point.

Fuencarral Workshop

- Connected to Spanish Rail Network
- 1st level maintenance:
 - 3 tracks of 90m, with 60m simple pit and 30m triple pit
 - 2 tracks with roof access
- 2nd level maintenance:
 - 4 tracks of 90m, 1 with simple pit and 1 with 30m triple pit
 - 4 bridge cranes (20 t, 16 t, 8 t, 8 t)
 - 8 lifting jacks (35 t each)
- Resistor (4.000 hp)
- 5 outer tracks (300m parking)
- Warehouse
- Offices
- Changing rooms
- Auxiliary Services
- On-track assistance starting point

Poceirão

- Warehouse
- Offices
- Changing rooms
- Auxiliary Services
- On-track assistance starting point

Montceau les Mines Workshop

- Connected to French Rail Network
- 1st level maintenance :
 - 3 tracks on pillars for 3 working levels (-1,2m, +1,5m and +3,9m with footbridges)
- 2nd level maintenance :
 - 3 tracks of 60m with 20m simple pit
 - 2 bridge cranes 25+5 t each
 - 8 lifting jacks (35 t each)
- Underfloor wheel-lathe (35 t per axle)
- 5 outer tracks (400m parking)
- Warehouse
- Offices
- Changing rooms
- Auxiliary Services
- On-track assistance starting point

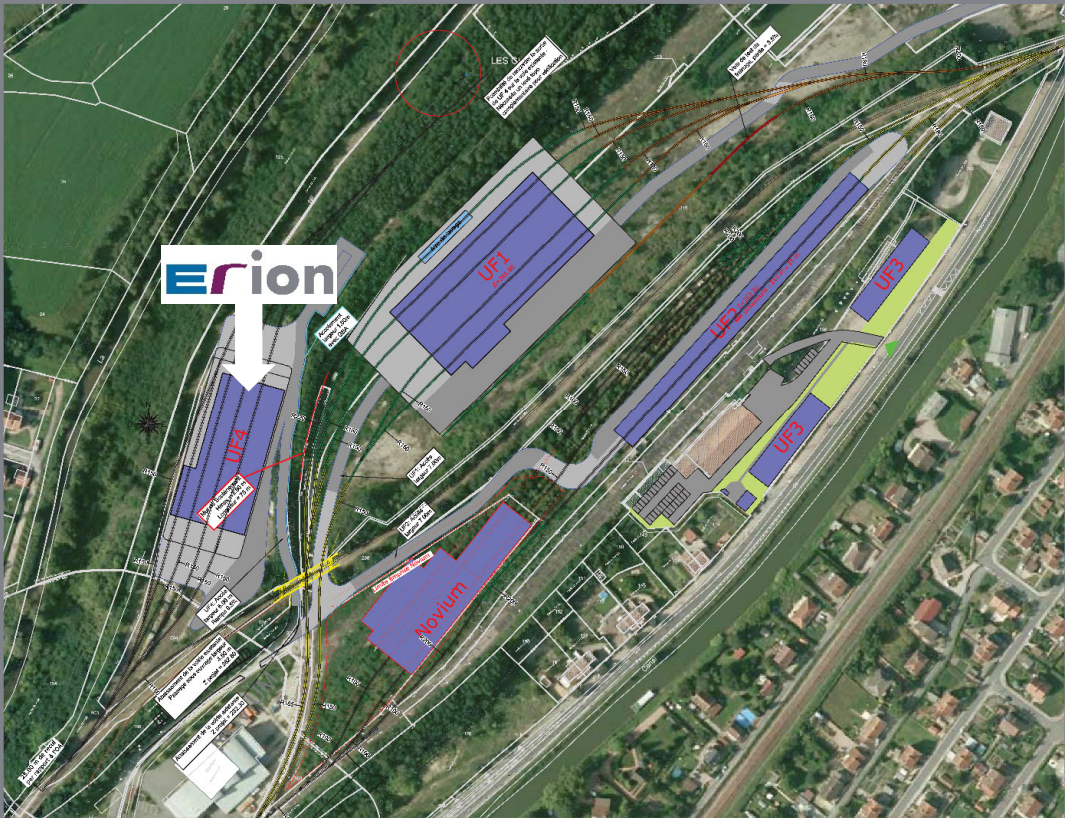
Lleida Workshop

- Connected to Spanish Rail Network
- 1st level maintenance:
 - 2 tracks of 90m on pillars for -1,1m working level and roof access
- 2nd level maintenance:
 - 1 track of 90m with 45m simple pit
 - 8 lifting jacks (20 t each)
- Urea refueling and refilling system
- WC emptying system
- 4 outer tracks (200m parking)
- Warehouse
- Offices
- Changing rooms
- Auxiliary Services
- On-track assistance starting point

Clients' Facilities

- 1st level maintenance
- Corrective maintenance

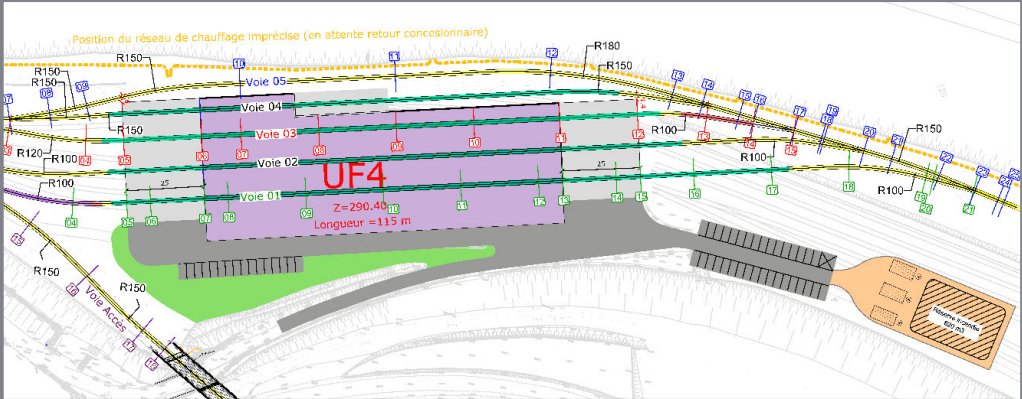
Erion France Workshop construction



May 2017
–
June 2019



Project design
Administrative procedures
Assessment
Works



Erion France Workshop: Images



Erion France Workshop: Images



+200 vehicles maintained by Erion



37

S/335 (ES/PT)



14

S/334 (ES)



53

Euro4000 (FR)



22

S/336 (Eurolight)



6

S/333.3 (ES)



3

S/1550 (PT)



7

Class 77 (FR)



5

S/257 (E-Dual)



3

Auscultadores ADIF (ES)



9

S/256 (E6000) (ES)



34

Cercanías Renfe (ES)



3

GTW DMU (ES)



4

Rodalies Lleida (ES)

ECM Certification

Erion, Erion France and Erion Portugal are **Entities in Charge of Maintenance (ECM)** within the European Union in conformity with Directive 2016/798/EC and EU Regulation No 779/2019.

Certified Maintenance Functions Erion:

- **Function I:** Management
- **Function II:** Maintenance Development
- **Function III:** Fleet Maintenance Management
- **Function IV:** Maintenance Delivery

Certified Maintenance Functions Erion France:

- **Function I:** Management
- **Function IV:** Maintenance Delivery

Certified Maintenance Functions Erion Portugal:

- **Function IV:** Maintenance Delivery

CERTIFIER
CERTIFICATE OF CONFORMITY OF ENTRY IN CHARGE OF MAINTENANCE
 This certificate is issued in accordance with the requirements of Directive 2016/798/EC and Regulation (EU) 2019/779.
 1. IDENTIFICATION OF THE ENTITY IN CHARGE OF MAINTENANCE
 2. CERTIFICATION BODY
 3. CERTIFICATION SCOPE
 4. CERTIFICATION PROCEDURE
 5. SCOPE OF PCA ACTIVITIES
 6. ADDITIONAL INFORMATION
 Date issued: 20/07/2023
 Mónica Cristina Faria
 Signature: [Signature]

CERTIFICATE OF CONFORMITY OF ENTRY IN CHARGE OF MAINTENANCE
 This certificate is issued in accordance with the requirements of Directive 2016/798/EC and Regulation (EU) 2019/779.
 1. IDENTIFICATION OF THE ENTITY IN CHARGE OF MAINTENANCE
 2. CERTIFICATION BODY
 3. CERTIFICATION SCOPE
 4. CERTIFICATION PROCEDURE
 5. SCOPE OF PCA ACTIVITIES
 6. ADDITIONAL INFORMATION
 Date issued: 20/07/2023
 Mónica Cristina Faria
 Signature: [Signature]

CERTIFICATE OF CONFORMITY OF ENTRY IN CHARGE OF MAINTENANCE
 This certificate is issued in accordance with the requirements of Directive 2016/798/EC and Regulation (EU) 2019/779.
 1. IDENTIFICATION OF THE ENTITY IN CHARGE OF MAINTENANCE
 2. CERTIFICATION BODY
 3. CERTIFICATION SCOPE
 4. CERTIFICATION PROCEDURE
 5. SCOPE OF PCA ACTIVITIES
 6. ADDITIONAL INFORMATION
 Date issued: 20/07/2023
 Mónica Cristina Faria
 Signature: [Signature]

CERTIFICATE OF CONFORMITY OF ENTRY IN CHARGE OF MAINTENANCE
 This certificate is issued in accordance with the requirements of Directive 2016/798/EC and Regulation (EU) 2019/779.
 1. IDENTIFICATION OF THE ENTITY IN CHARGE OF MAINTENANCE
 2. CERTIFICATION BODY
 3. CERTIFICATION SCOPE
 4. CERTIFICATION PROCEDURE
 5. SCOPE OF PCA ACTIVITIES
 6. ADDITIONAL INFORMATION
 Date issued: 20/07/2023
 Mónica Cristina Faria
 Signature: [Signature]

CERTIFICATE OF CONFORMITY FOR FUNCTIONS OF MAINTENANCE
 This certificate is issued in accordance with the requirements of Directive 2016/798/EC and Regulation (EU) 2019/779.
 1. IDENTIFICATION OF THE ENTITY IN CHARGE OF MAINTENANCE
 2. CERTIFICATION BODY
 3. CERTIFICATION SCOPE
 4. CERTIFICATION PROCEDURE
 5. SCOPE OF PCA ACTIVITIES
 6. ADDITIONAL INFORMATION
 Date issued: 20/07/2023
 Mónica Cristina Faria
 Signature: [Signature]



International Certifications

ISO 9001:2015



ISO 14001:2015



ISO 45001:2018



Services



Integral Maintenance of Locomotives

Integral Maintenance of Self Propelled Vehicles

Operational Maintenance

Major Repairs & Transformations

Accident Repairs

Components Repairs

Engineering Services

Technical Training

Workshop Management

- Preventive Maintenance
- Corrective Maintenance
- Daily Operations

- MP specific operations

- Modifications to improve efficiency
- Major repairs for a new life cycle of the vehicle

- Thorough analysis conducted by our experts
- Restoration of all functionalities of the vehicle

- Diesel engines, axles, bogies, traction generators, pneumatic equipment, etc.

- Diesel engine diagnosis equipment, vibration analysis, thermography, non-destructive tests, endoscopy, control of wheel wear, traction generators charging, etc.

- Maintenance organization
- Workshops

Engineering Services

Erion has an Engineering team of 10 members

MAIN FUNCTIONS

- Vehicle maintenance file management.
- Management of the CMS (779, ISO 9001, 14001 and 45001).
- Technical follow-up of fleets & KPI evolution analysis.
- Technical support in incidents, breakdowns and accidents.
- CMMS & Document Manager management and configuration: Vehicles and their configuration, Maintenance Plans, tools, measuring equipment and their calibration, qualifications and authorizations of tasks and personnel, inspection sheets, lists of materials, working instructions, any maintenance documents.
- Preparation of technical and operational reports.
- Training and internal qualification of workers.
- Technical dialogue with customers and other interested parties (National Safety Agencies, Infrastructure Managers, etc.).

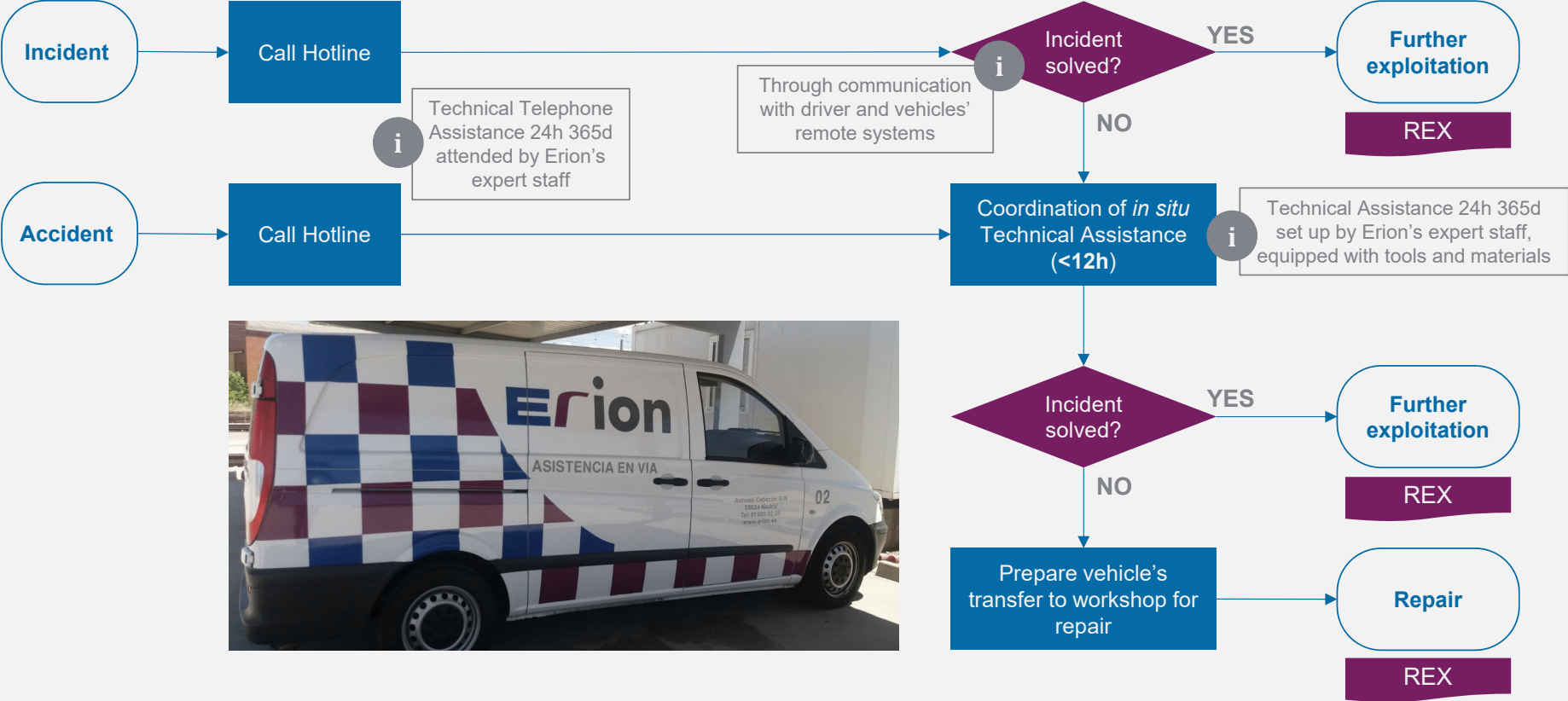
STADLER ENGINEERING SUPPORT

- Maintenance Engineering (LCC/RAM)
- Product Engineering (vehicle design)
- Information and Remote Systems
- Return on Experience (with data from other projects)

Services

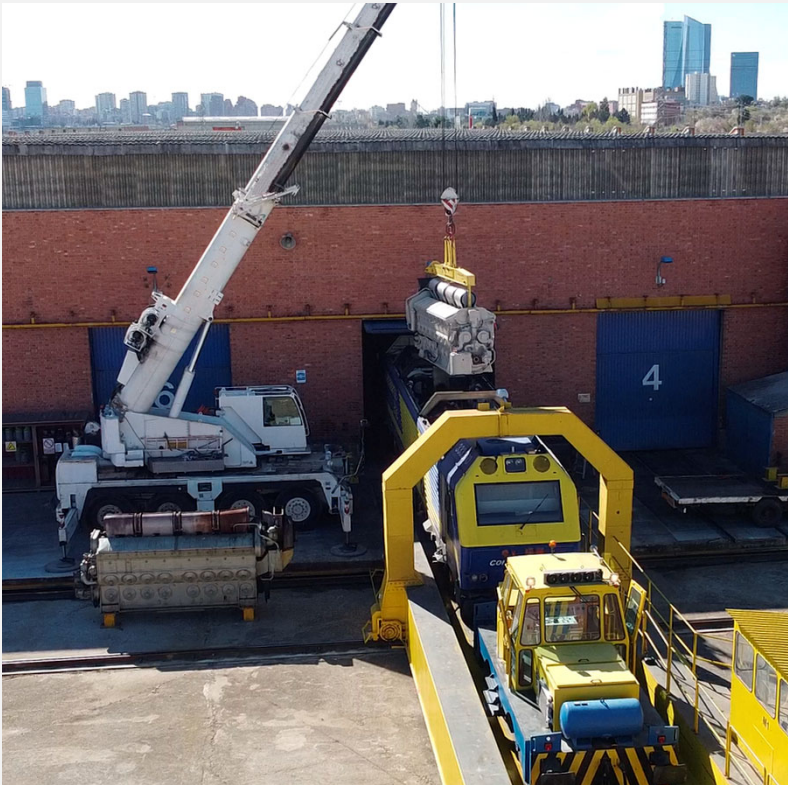


Technical Assistance



Services

Major Repairs, Transformations & Modifications



Erion has the ability to execute integrally any type of maintenance operations.

Services



Accidental Repairs



Services



Accidental Repairs

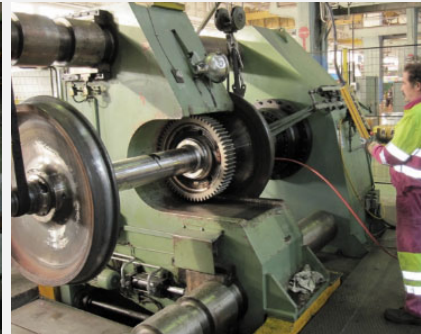


Services

Components Repairs: Diesel Engines



Components Repairs: Axles & Bogies



Services



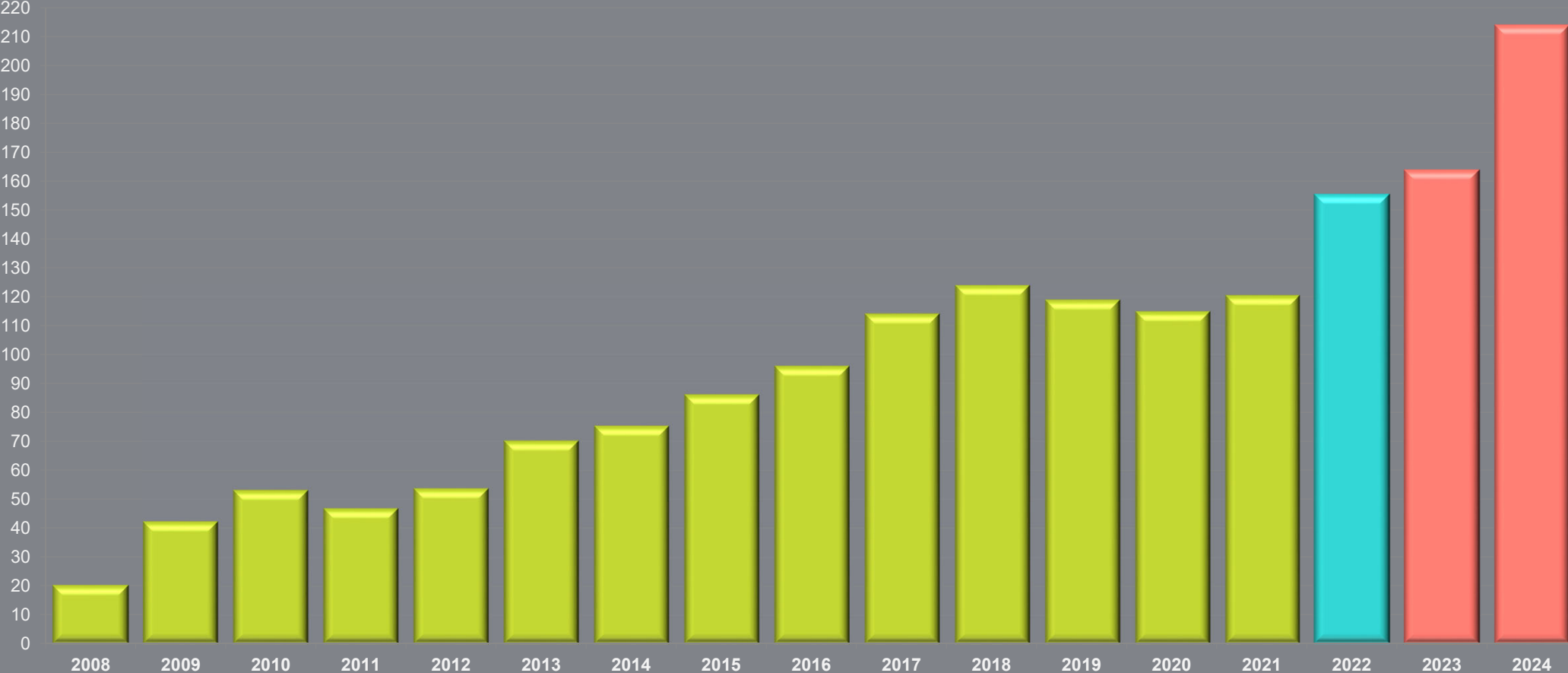
Components Repairs:
Traction Motors and
Generators



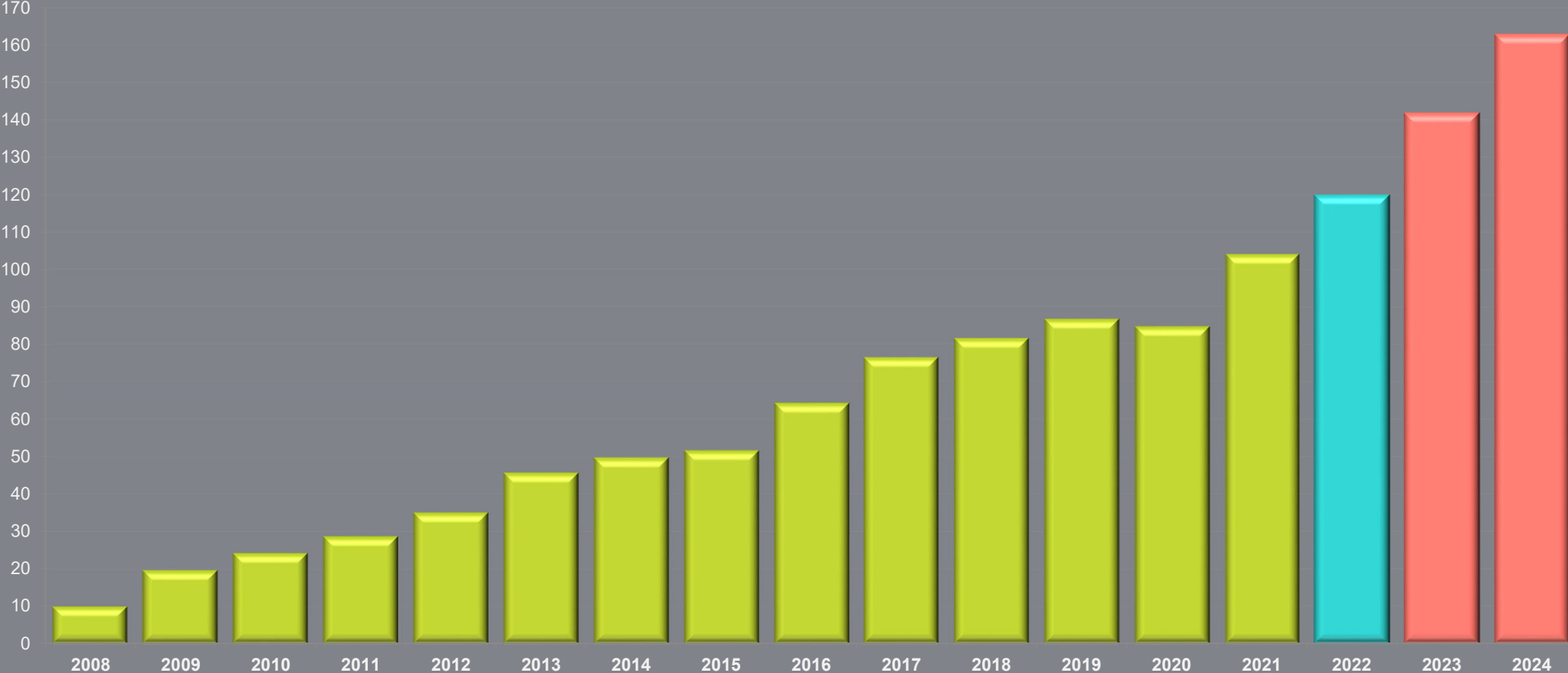
Components Repairs:
Pneumatic Equipment



Fleet maintained by Erion: evolution



Erion personnel: evolution



Thank you

erion