

Sample Type **RNA-40**

Sample ID

Sample #

λ nm Abs.

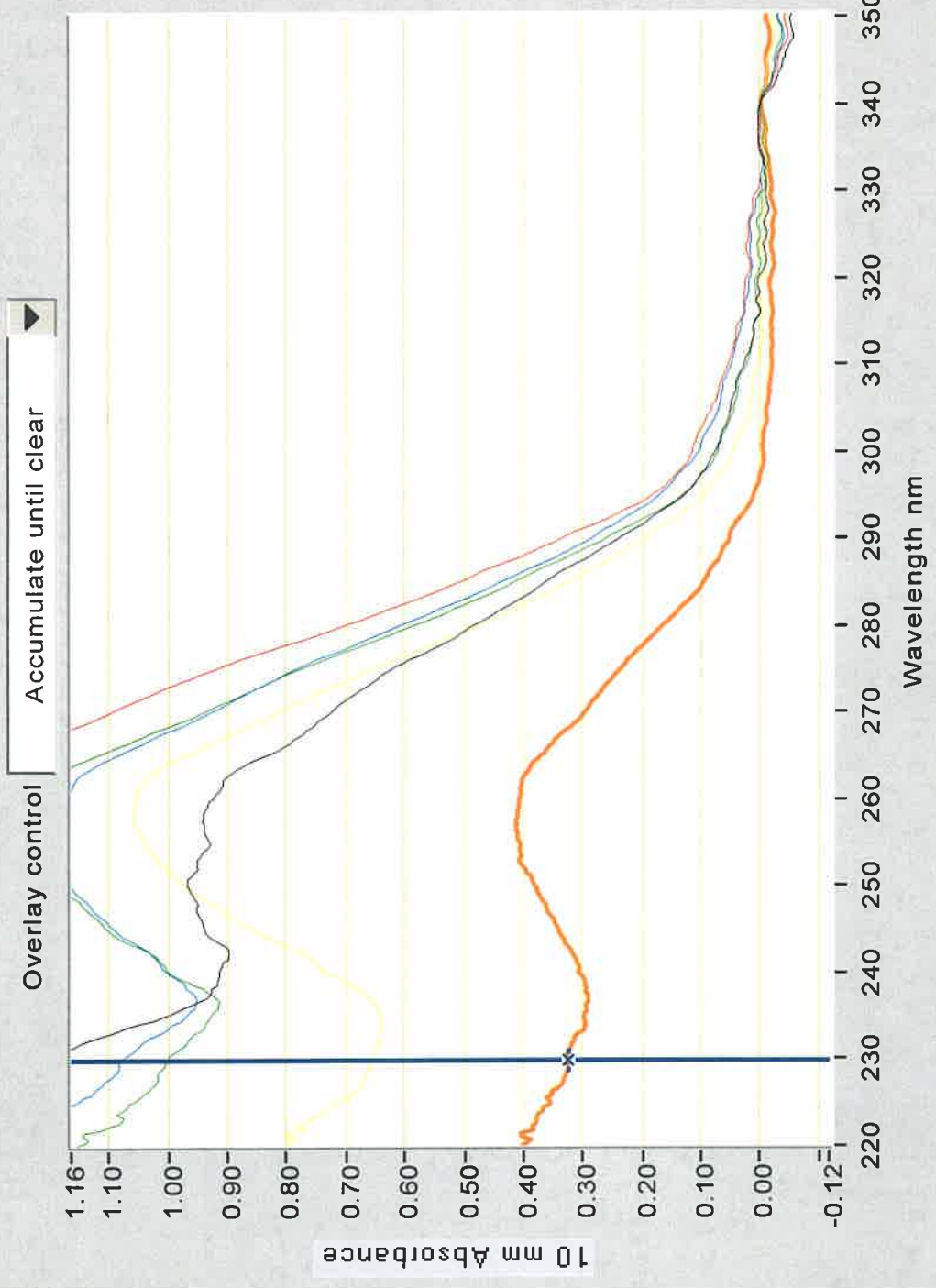
A-260 10 mm path

A-280 10 mm path

260/280

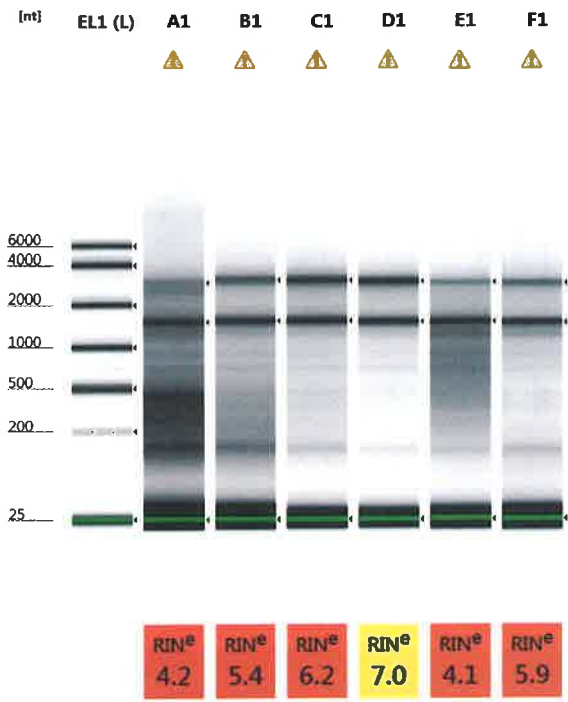
260/230

16.3 ng/uL



Sample ID	User ID	Date	Time	ng/ul	A260	A280	260/280	260/230	Constant	Cursor Pos.	Cursor abs.	340 raw
	Default	10/22/2019	3:24 PM	36.94	0.923	0.481	1.92	0.77	40.00	230	1.205	3.499
0	Default	10/22/2019	3:26 PM	46.93	1.173	0.605	1.94	1.09	40.00	230	1.077	0.225
1	Default	10/22/2019	3:27 PM	56.08	1.402	0.699	2.01	0.98	40.00	230	1.427	0.263
2	Default	10/22/2019	3:28 PM	48.53	1.213	0.581	2.09	1.21	40.00	230	0.999	0.130
3	Default	10/22/2019	3:29 PM	42.19	1.055	0.472	2.24	1.61	40.00	230	0.654	0.060
4	Default	10/22/2019	3:30 PM	16.25	0.406	0.164	2.48	1.25	40.00	230	0.325	0.008

Filename: 2019-10-22 - 15.20.35.RNA

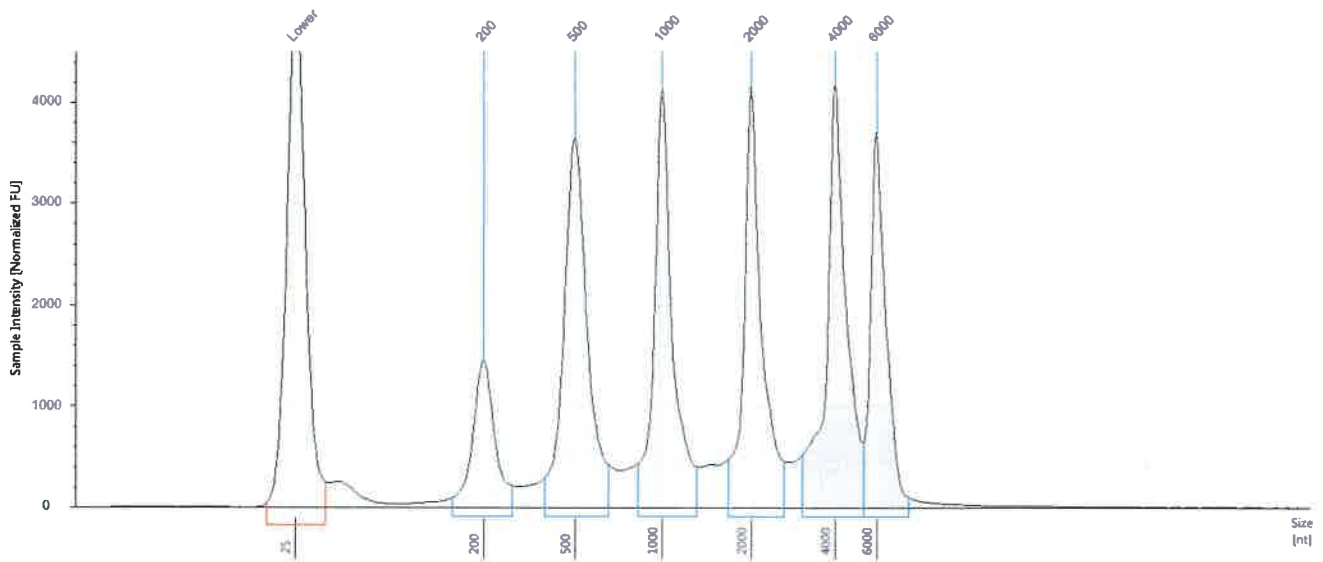


Default image (Contrast 50%), Image is Scaled to Sample

Sample Info

Well	RINe	28S/18S (Area)	Conc. [ng/ul]	Sample Description	Alert	Observations
EL1	-	-	84.9	Electronic Ladder		Ladder
A1	4.2	0.7	24.1	Healthy	⚠	RNA concentration outside recommended range for RINe
B1	5.4	0.8	18.1	0	⚠	RNA concentration outside recommended range for RINe
C1	6.2	0.9	24.7	1	⚠	RNA concentration outside recommended range for RINe
D1	7.0	1.3	22.0	2	⚠	RNA concentration outside recommended range for RINe
E1	4.1	0.7	23.1	3	⚠	RNA concentration outside recommended range for RINe
F1	5.9	1.1	15.9	4	⚠	RNA concentration outside recommended range for RINe

EL1: Electronic Ladder



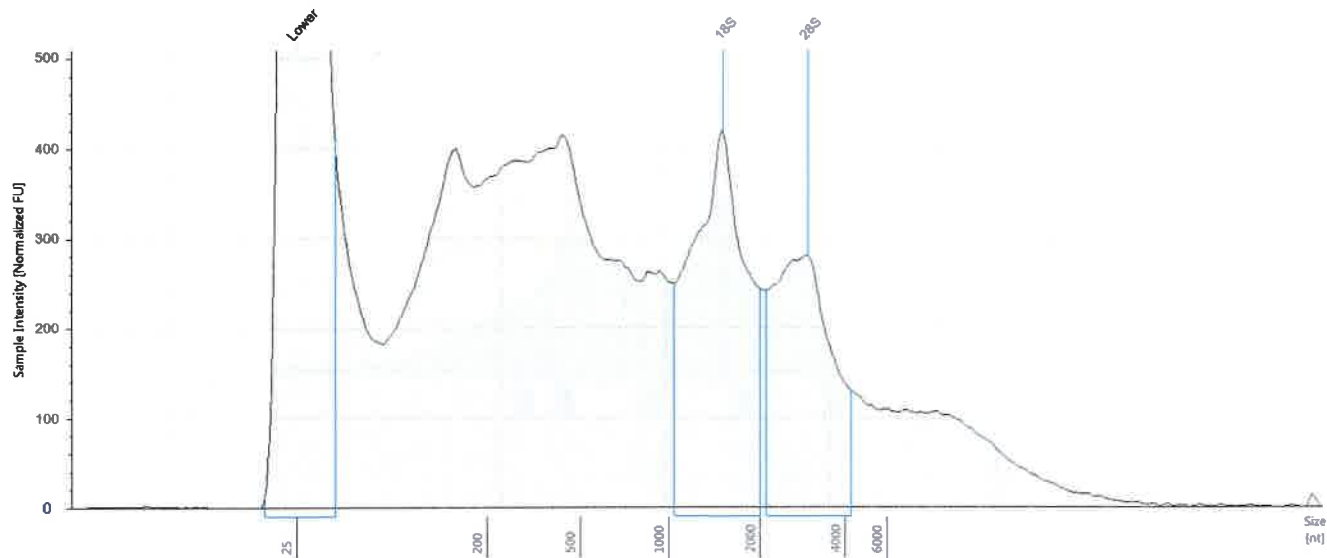
Sample Table

Well	RINe	28S/18S (Area)	Conc. [ng/ul]	Sample Description	Alert	Observations
EL1	-	-	84.9	Electronic Ladder		Ladder

Peak Table

Size [nt]	Calibrated Conc. [ng/ul]	Assigned Conc. [ng/ul]	Peak Molarity [nmol/l]	% Integrated Area	Peak Comment	Observations
25	40.0	40.0	4710	-		Lower Marker
200	5.94	-	87.4	7.80		
500	15.9	-	93.6	20.88		
1000	14.2	-	41.8	18.62		
2000	13.8	-	20.3	18.11		
4000	15.5	-	11.4	20.38		
6000	10.8	-	5.31	14.22		

A1: Healthy



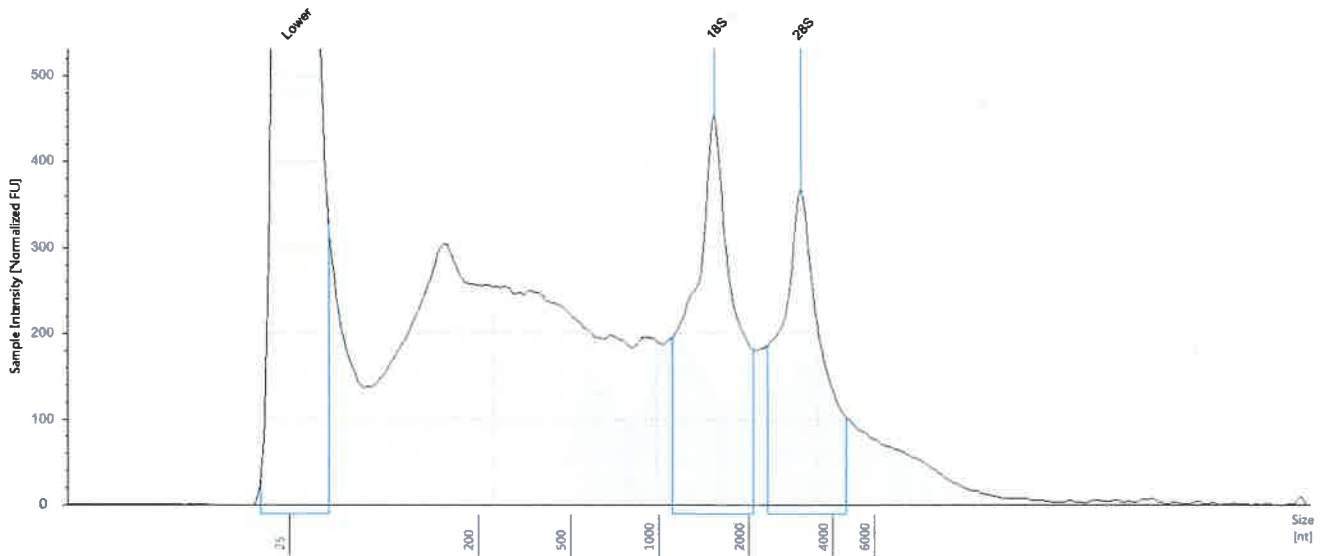
Sample Table

Well	RINe	28S/18S (Area)	Conc. [ng/ul]	Sample Description	Alert	Observations
A1	4.2	0.7	24.1	Healthy	▲	RNA concentration outside recommended range for RINe

Peak Table

Size [nt]	Calibrated Conc. [ng/ul]	Assigned Conc. [ng/ul]	Peak Molarity [nmol/l]	% Integrated Area	Peak Comment	Observations
25	40.0	40.0	4710	-		Lower Marker
1508	3.76	-	7.34	57.58		18S
2937	2.77	-	2.77	42.42		28S

B1: 0



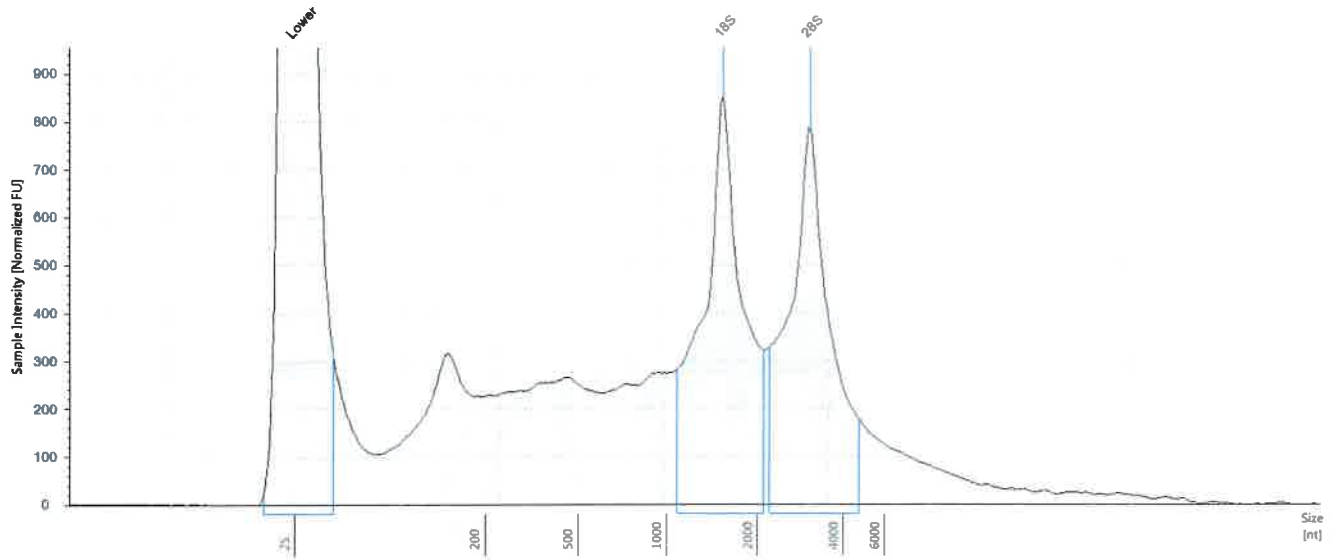
Sample Table

Well	RINe	28S/18S (Area)	Conc. [ng/μl]	Sample Description	Alert	Observations
B1	5.4	0.8	18.1	0	▲	RNA concentration outside recommended range for RINe

Peak Table

Size [nt]	Calibrated Conc. [ng/μl]	Assigned Conc. [ng/μl]	Peak Molarity [nmol/l]	% Integrated Area	Peak Comment	Observations
25	40.0	40.0	4710	-		Lower Marker
1529	3.22	-	6.20	56.23		18S
3064	2.51	-	2.41	43.77		28S

Cl: 1



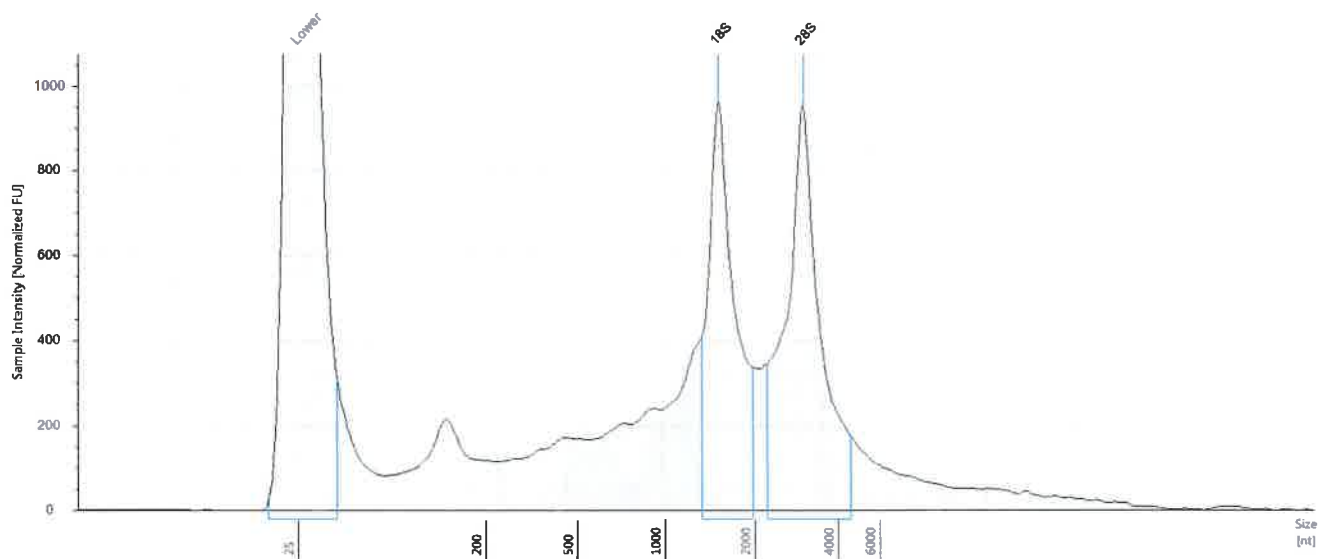
Sample Table

Well	RINe	28S/18S (Area)	Conc. [ng/ul]	Sample Description	Alert	Observations
Cl	6.2	0.9	24.7	1	▲	RNA concentration outside recommended range for RINe

Peak Table

Size [nt]	Calibrated Conc. [ng/ul]	Assigned Conc. [ng/ul]	Peak Molarity [nmol/l]	% Integrated Area	Peak Comment	Observations
25	40.0	40.0	4710	-		Lower Marker
1528	5.75	-	11.1	51.58		18S
3033	5.40	-	5.23	48.42		28S

D1: 2



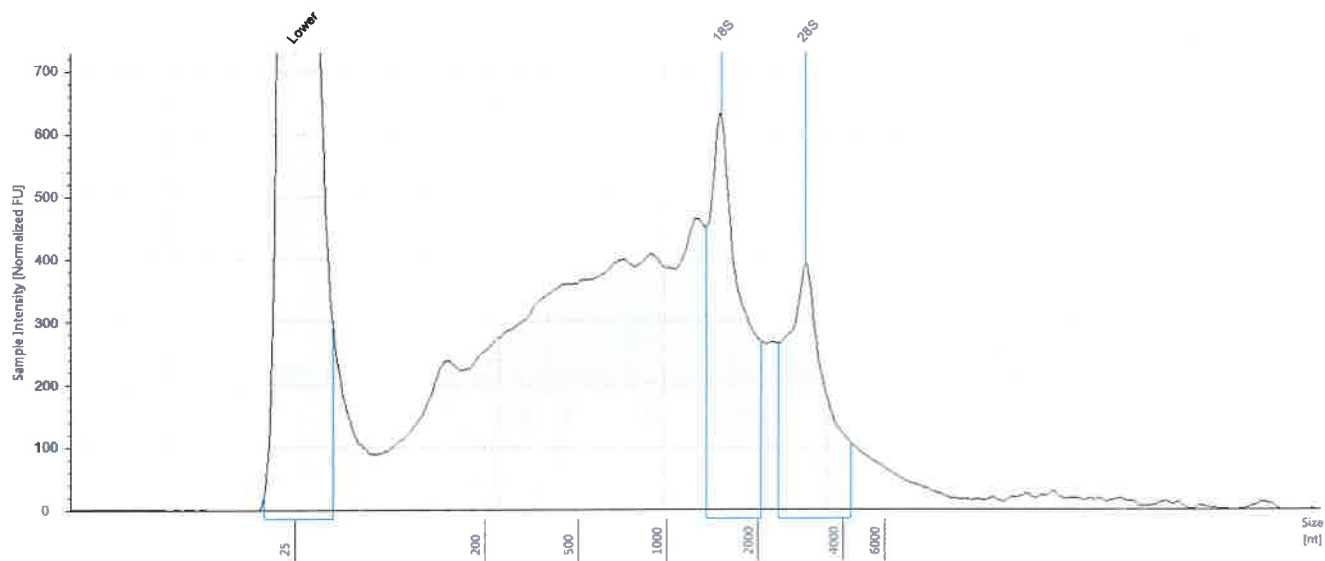
Sample Table

Well	RINe	28S/18S (Area)	Conc. [ng/ul]	Sample Description	Alert	Observations
D1	7.0	1.3	22.0	2	▲	RNA concentration outside recommended range for RINe

Peak Table

Size [nt]	Calibrated Conc. [ng/ul]	Assigned Conc. [ng/ul]	Peak Molarity [nmol/l]	% Integrated Area	Peak Comment	Observations
25	40.0	40.0	4710	-		Lower Marker
1497	4.36	-	8.57	43.38		18S
2973	5.69	-	5.63	56.62		28S

E1: 3



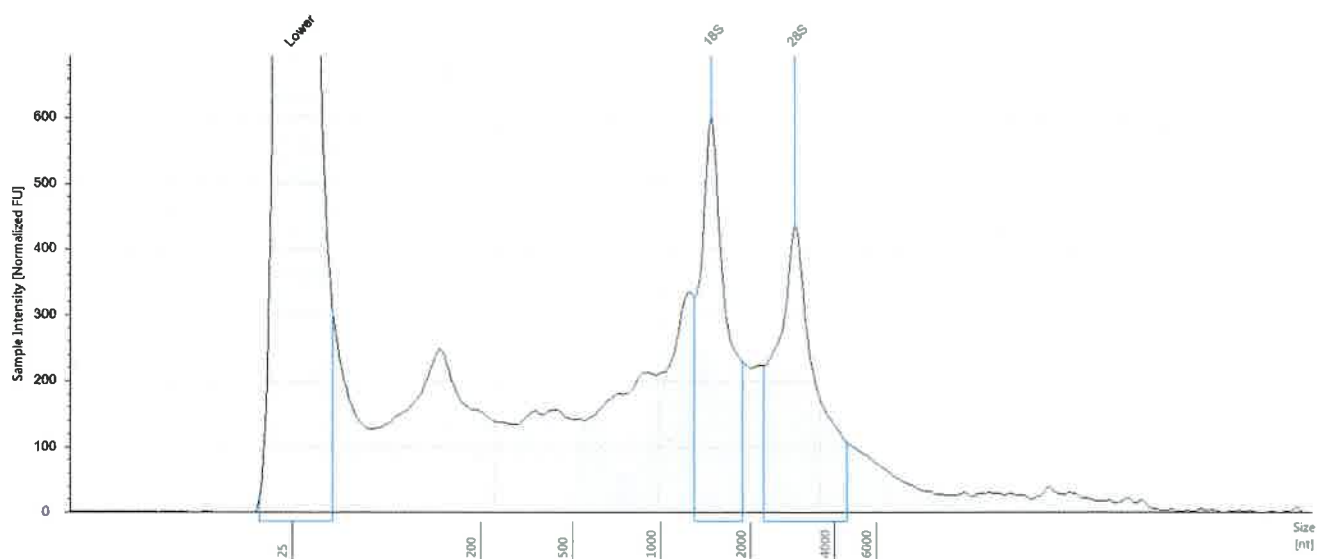
Sample Table

Well	RINe	28S/18S (Area)	Conc. [ng/ul]	Sample Description	Alert	Observations
E1	4.1	0.7	23.1	3	▲	RNA concentration outside recommended range for RINe

Peak Table

Size [nt]	Calibrated Conc. [ng/ul]	Assigned Conc. [ng/ul]	Peak Molarity [nmol/l]	% Integrated Area	Peak Comment	Observations
25	40.0	40.0	4710	-		Lower Marker
1499	3.43	-	6.72	57.15		18S
2926	2.57	-	2.58	42.85		28S

F1: 4



Sample Table

Well	RINe	28S/18S (Area)	Conc. [ng/ul]	Sample Description	Alert	Observations
F1	5.9	1.1	15.9	4	▲	RNA concentration outside recommended range for RINe

Peak Table

Size [nt]	Calibrated Conc. [ng/ul]	Assigned Conc. [ng/ul]	Peak Molarity [nmol/l]	% Integrated Area	Peak Comment	Observations
25	40.0	40.0	4710	-		Lower Marker
1469	2.54	-	5.08	47.80		18S
2873	2.77	-	2.84	52.20		28S