

Overview of the Australian Dairy Industry, with a focus on WA

Your Levy at Work

Jessica Andony – Western Dairy Research, Extension and Youth Coordinator

Western Dairy

- One of eight Regional Development Programs Aus wide
- Great engagement with farmers and service providers
- Range of research and extension programs

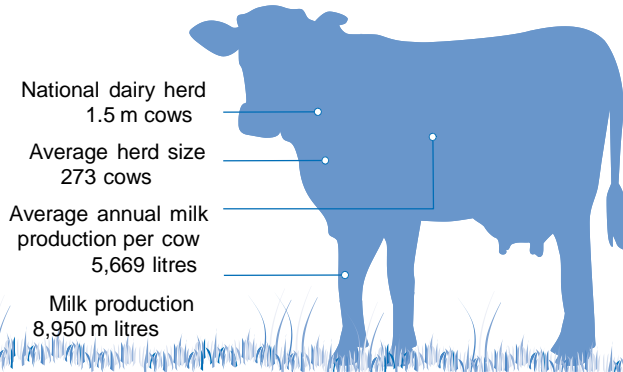
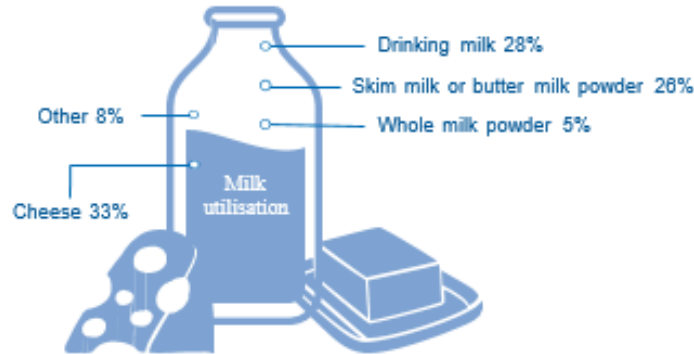


My role

- Research and extension
- Animal health and nutrition
- Involved in 2017 FMD Training in Nepal

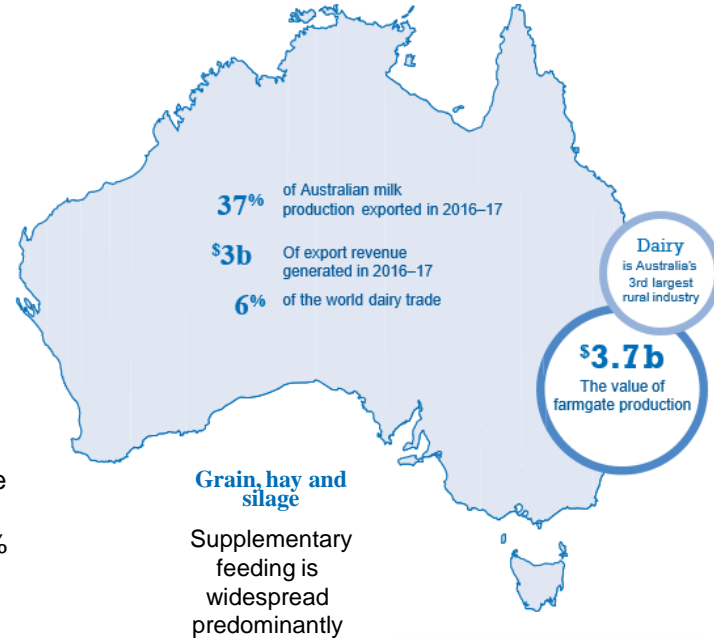


The Australian Dairy Industry



Pasture

Farms are predominantly pasture based with approximately 70-75% of dairy cattle feed requirements coming from grazing in a year of 'normal' seasonal conditions

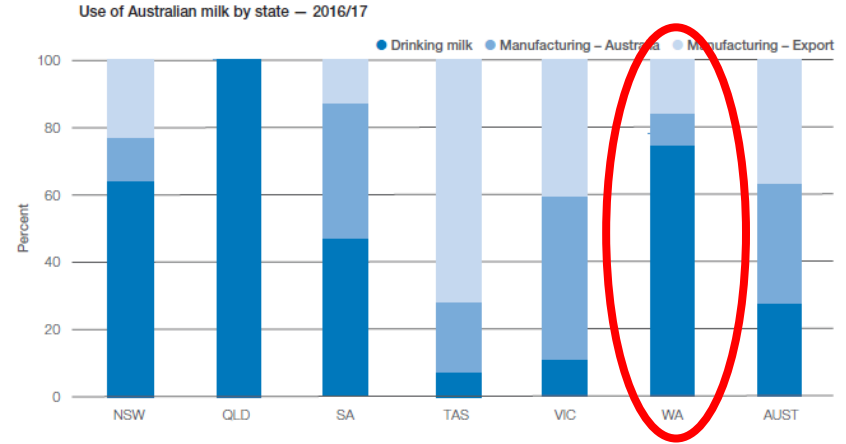


Department of Primary Industries and Regional Development



Your Levy at Work

The Australian Dairy Industry



Department of
Primary Industries and
Regional Development



Your Levy at Work

Western Australia

- 148 dairy farms
- 55,000 milking (and dry) cows
- Annual production approx. 380 million litres
- Geographically spread out



Australian exports of live dairy heifers (cows)

	NSW	VIC	QLD	SA	WA	TAS	AUST
2005/06	1,008	30,396		2,106	4,411		37,921
2006/07	385	26,077		1,276	3,812		31,550
2007/08	36	50,395	76	4,255	4,543		59,305
2008/09	434	38,896	523	3,426	619		43,898
2009/10	932	73,640	27	765	5,786		81,150
2010/11	219	61,817	978		12,081	103	75,198
2011/12	806	57,926	304	3,130	2,656	454	65,276
2012/13	305	69,359	620	2,282	12,188	2,668	87,422
2013/14		89,640	1,171	4	1,525		92,340
2014/15	910	64,638	122		7,535		73,205
2015/16	242	69,486		230	1,949		71,907
2016/17 (p)	647	70,395			1,769		72,811

Source: Dairy Australia and ABS



Our Levy at Work

Husbandry/Management

- Increasing use of polled genetics or debudding
- Farms monitor lameness and maintain laneways
- Monitor nutrition and feed budget
- Implement practise to increase colostrum intake
- Understand impacts of heat stress and aim to minimise
- Understand importance of biosecurity



Department of
Primary Industries and
Regional Development



Your Levy at Work

Bovine Johnes Disease

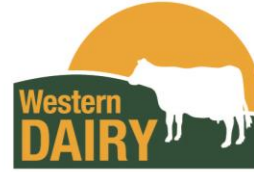
- Under National 'Dairy Score' System (last 12 months)
- Farmers at Score 8 (top) must have animals tested
- No positives known of so far
- Majority of farms sit at Score 6 (biosecurity plan in place, not tested)



Department of
Primary Industries and
Regional Development



Your Levy at Work



Overview of the Australian Dairy Industry, with a focus on WA

Your Levy at Work

Jessica Andony – Western Dairy Research, Extension and Youth Coordinator