



LESY Slovenskej republiky, state company



Basic information

- **Business name :** LESY Slovenskej republiky, štátny podnik
- **Legal form :** state company
- **Seat :** Námestie SNP 8, 975 66 Banská Bystrica
- **Date of establishment :** 1 July 1999
- **History :**
 - 13th century**
 - 1750** - first forest offices
 - 1769** – first principles/sustainable forest production
 - Jozef Dekret Matejovie** – first pioneer of modern forestation



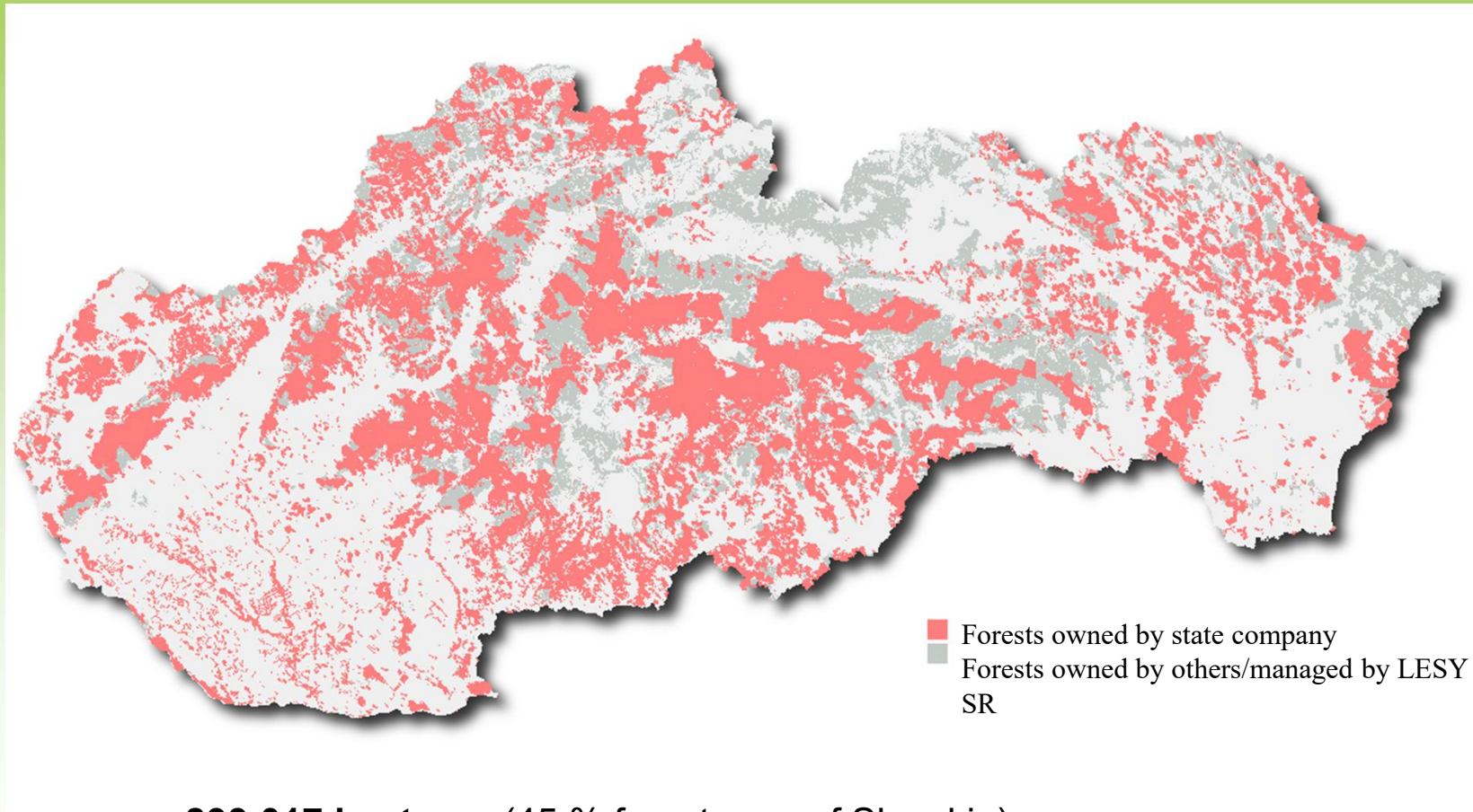
How we are organized...

- **23 + 2 branches**
- **23 Forest branches** are divided into 30 forestries and 968 forest districts
- **Branch of Forest Technique**
- **Branch Semenoles**
- **3,521 employees**





Forests managed by LESY SR

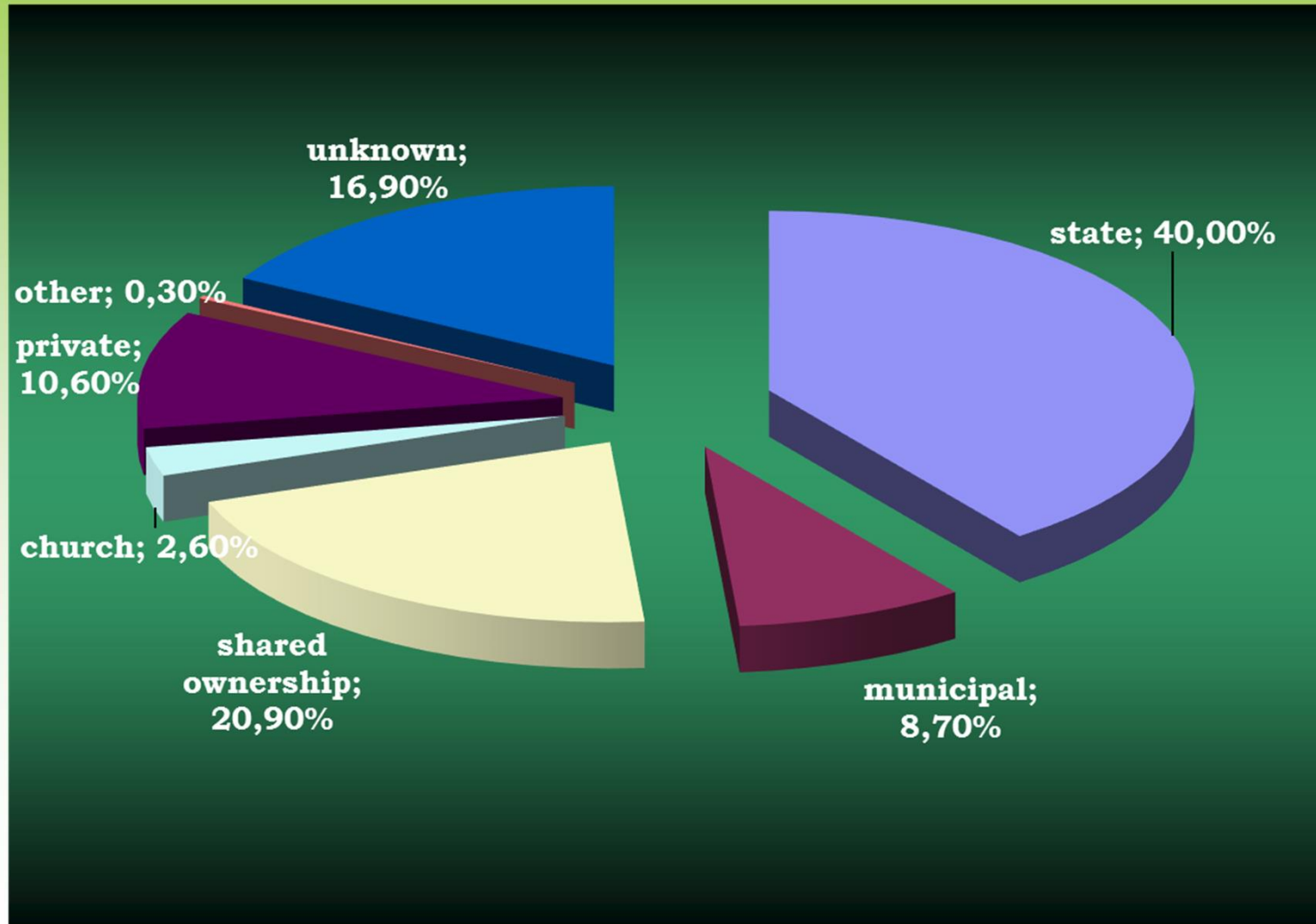


893,017 hectares (45 % forest area of Slovakia)

- **860 thousands hectares of hunting grounds**
- **The right of hunting has been running in 76 (4,1% of 1853) hunting grounds with the area of 342 thousands hectares**

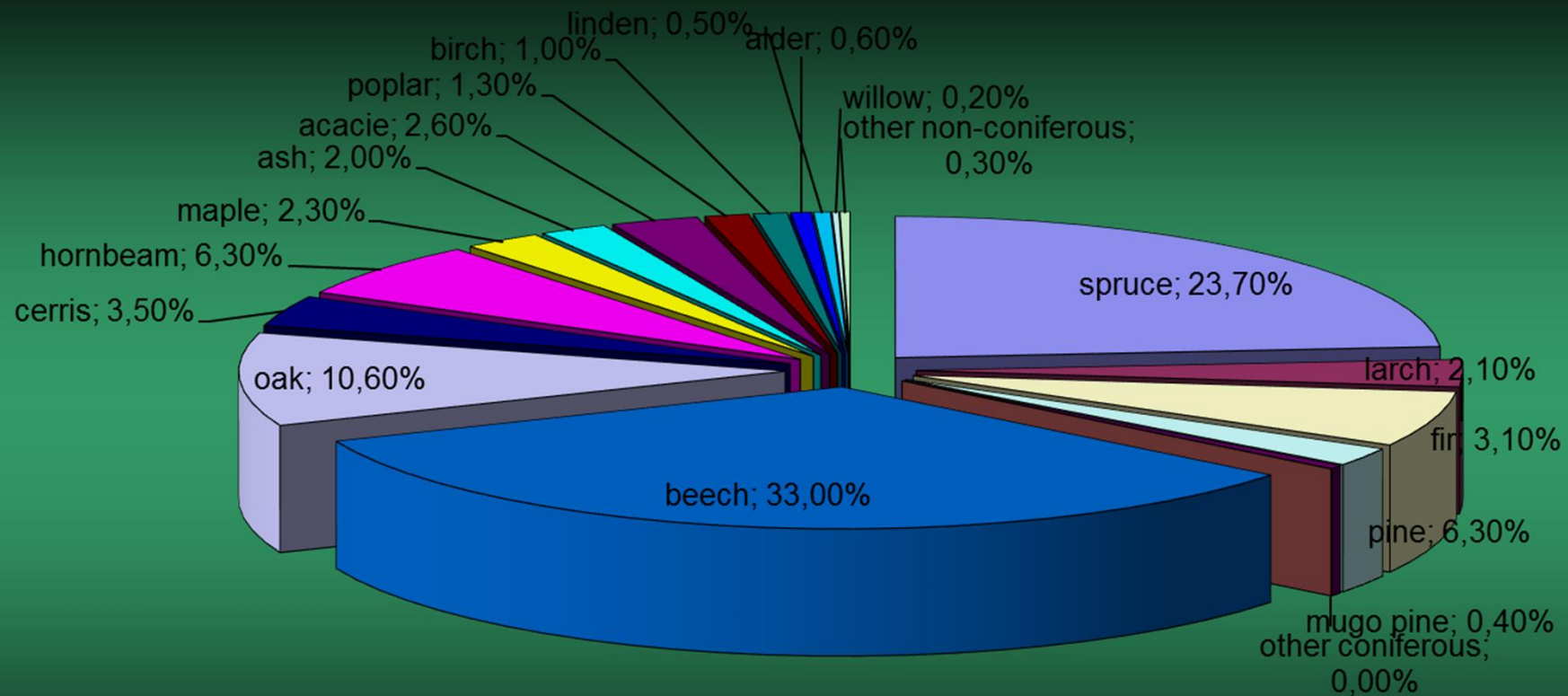


Ownership of forest land in Slovakia





Tree species composition



38 % coniferous trees, 62 % non-coniferous trees



Slovak Tree of the year 2016

PLANE tree

(*Platanus hispanica*)

1745

height – 25 m; circuit – 6,03 m

place – Budatín park in Žilina





Business fields

Main activities in the area of forestry :

- Sustainable forest management
- Forest protection
- Harvesting activities
- Timber trade
- Biomass production





Sustainable forest management

Certification of quality :

- **The whole area** of forests managed by the state company LESY SR is PEFC certified. It means all **893,017 hectares** in all **23 Forest branches** are **PEFC certified** on regional principle.



- **Two Forest branches - Trenčín and Prešov** are holders of **FSC certificate**. They manage 106,387 ha of forests.





Forest protection

- **Prevention and protection measures**
 - individual or barrier placed pheromone traps (bark beetle)
 - classical traps
 -
- Repeating climatic defects cause extensive damages to forest stands leading to the increase of **bark beetles**.
- **The most dangerous bark beetle** – European spruce bark beetle (*Ips typographus*)



Key Figures

	Unit	2011	2012	2013	2014	2015	2016
Forest regeneration	hectares	10,216	8,142	8,287	6,919	6,325	6,979
Clearing	hectares	16,381	19,757	20,573	18,359	18,523	18,184
Direct costs of silviculture oper.	th. €	23,059	16,516	21,290	20,826	22,781	21,318
Direct costs of harvesting oper.	th. €	109,224	96,377	94,864	101,545	107,407	108,681
Thinning up to 50 years	hectares	13,863	13,292	14,150	8,765	10,173	12,560
Timber harvesting	m3	4,406,200	3,955,131	3,986,568	4,103,452	4,205,559	4,205,780
coniferous	m3	2,230,422	1,852,409	1,750,723	1,935,999	1,875,920	2,042,755
non-coniferous	m3	2,175,778	2,102,722	2,235,845	2,167,453	2,329,639	2,163,025
Total revenues	th. €	257,855	236,740	239,581	240,057	245,620	250,861
Total costs	th. €	242,993	224,046	231,190	230,961	237,830	243,592
Profit of the year before tax	th. €	+18,689	+15,589	+10,272	+12,033	+10,331	+8,562
Profit of the year after tax		+14,862	+12,693	+8,392	+9,096	+7,790	+7,281



Public relations

- **Emphasis on forest pedagogy**
- **Building of educational trails**
- **Open-air forestry museum**
- **Activities for the public**
- **Proactive communication to the press**
- **Positive publicity, building positive relation to forests and credibility of forestry profession**





International and regional cooperation

- LESY SR - **member** of State Forest Enterprises Associations **EUSTAFOR**
- **Cooperation** with forest companies in Czech Republic (Lesy ČR), Poland (Lasy Państwowe), Croatia (Hrvatske šume), Hungary (Ipoly Erdő, Egererdő...)
- **Aim of cooperation** - exchange of experiences in the area of silviculture, forest protection, certification, timber trade, use of new technologies, game management and public relation



Thank you for your attention



LESY Slovenskej republiky, state enterprise

Námestie SNP 8

975 66 Banská Bystrica

Tel.: +421 / 48 / 43 44 111

Fax: +421 / 48 / 43 44 191

E-mail: lesysr@lesy.sk

www.lesy.sk