

Chinese Taipei's efforts in increasing forest coverage rate


Director General Hwa-Ching LIN
Council of Agriculture,
30 October 2017



STRATEGIES TO INCREASE FOREST COVERAGE

An aerial photograph of a vast mountain range in Chinese Taipei. The mountains are covered in dense, vibrant green vegetation, likely primary forests. The terrain is rugged, with deep valleys and sharp ridges. The sky is a clear, bright blue with a few wispy white clouds. The overall scene conveys a sense of natural beauty and environmental preservation.

Since 1990, Chinese Taipei has fully banned the logging of primary forests.

A photograph of a dense, green forest covering a hillside. The trees are various shades of green, and the background shows a hazy, grey sky and distant mountains. The text is overlaid in white, bold font on the left side of the image.

We brought together the private sectors' capacity under the incentive measures to bring new and renew existing afforestation with public sectors.

Focused Areas of Forest Restoration

Landslide areas



Over-cultivated land



Fire sites



Deteriorated forest land



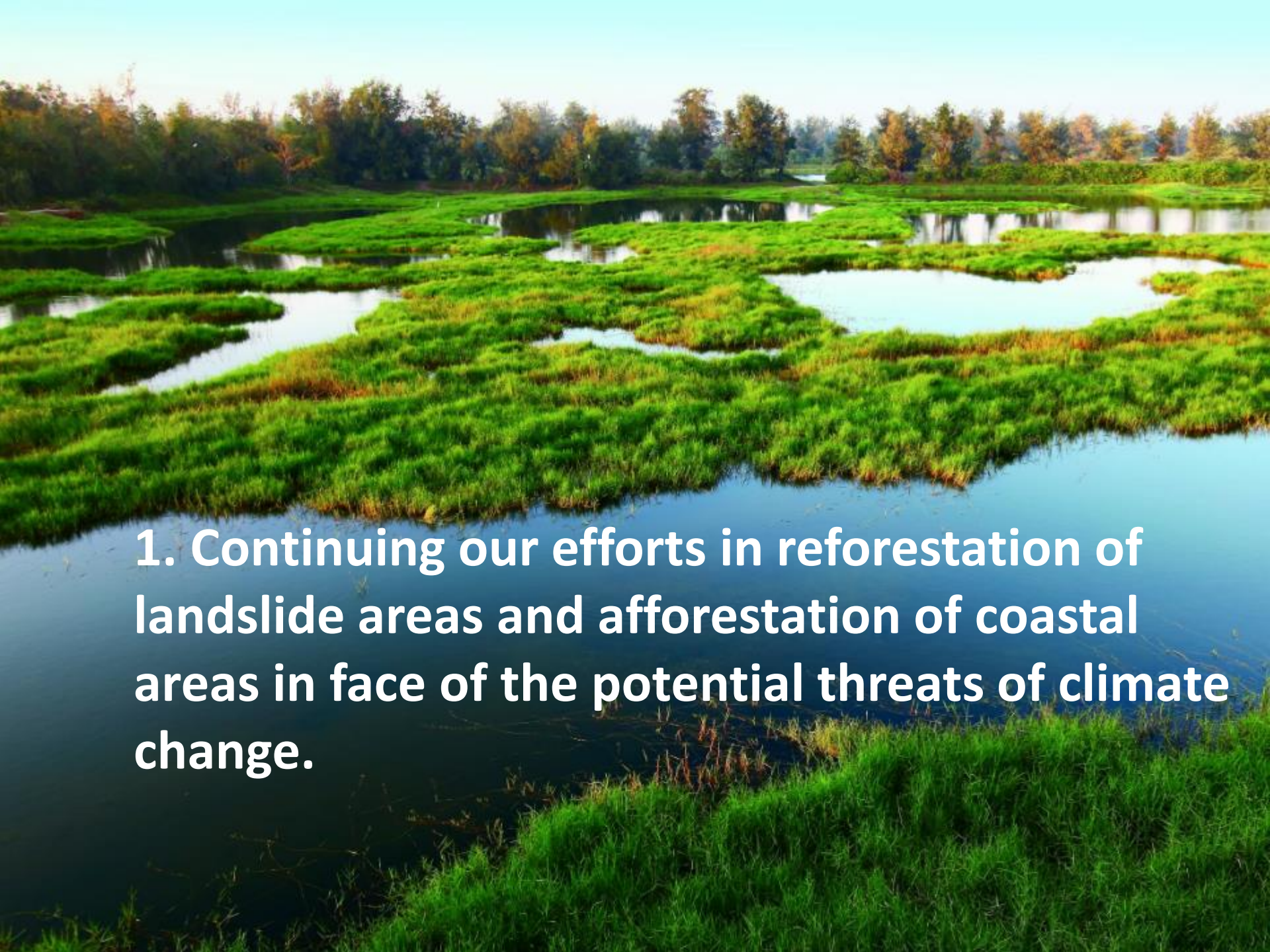
Deteriorated costal forest

CHINESE TAIPEI'S ACHIEVEMENT

By our efforts, nowadays, we achieved...

- **Total forest area of 2.197 million hectares and forest coverage rate of 60.71% (2015, National forest resource survey)**
- **Forest area has increased by 2.18% in 2 decades compared to 58.53% in 1995.**

CHINESE TAIPEI'S FUTURE KEY TARGETS



1. Continuing our efforts in reforestation of landslide areas and afforestation of coastal areas in face of the potential threats of climate change.


2. Launching the **Green Network Establishment Project for National Ecology Protection in 2018**

- **Plan and structuralize dense coastal forests to strengthen the defense abilities of coastal regions against natural hazards.**
- **Integrate green belts of east and west flowing rivers in an environmentally friendly way by afforesting multi-layered forests with the native tree species of the regions to increase forest coverage and to link up animal habitats.**



EXPECTATIONS

- To form the national green network by linking forest, river, and ocean ecosystems all together from high-elevation mountains to coastal regions.
- The Green Network forms animal-friendly ecological corridors that reduce the impact of habitat fragmentation.

- 
- An aerial photograph of a valley. In the foreground, there are several rectangular green fields, likely rice paddies, interspersed with dense green forest. A small cluster of buildings, possibly a village, is visible in the middle ground. The valley is surrounded by steep, forested hills. The sky is clear and blue.
- **Helping the residents of nearby villages to boost their connectivity and mutually-beneficial relationships with their surrounding natural environment.**
 - **As Satoyama Initiative and Aichi Targets highlighted**

CONCLUSION

Our commitment

- **Do everything in our efforts to prevent deforestation and degradation**
- **Work with all economies to slow down global warming**
- **Build a sustainable environment and achieve harmonious coexistence**

THANK YOU FOR YOUR PATIENCE!

