

桃園國際機場現況及未來發展 Taoyuan International Airport – Current Status and Future Development

Taoyuan International Airport Corporation
Oct. 2017

1

機場園區發展現況
The Current Status of the Airport Park

2

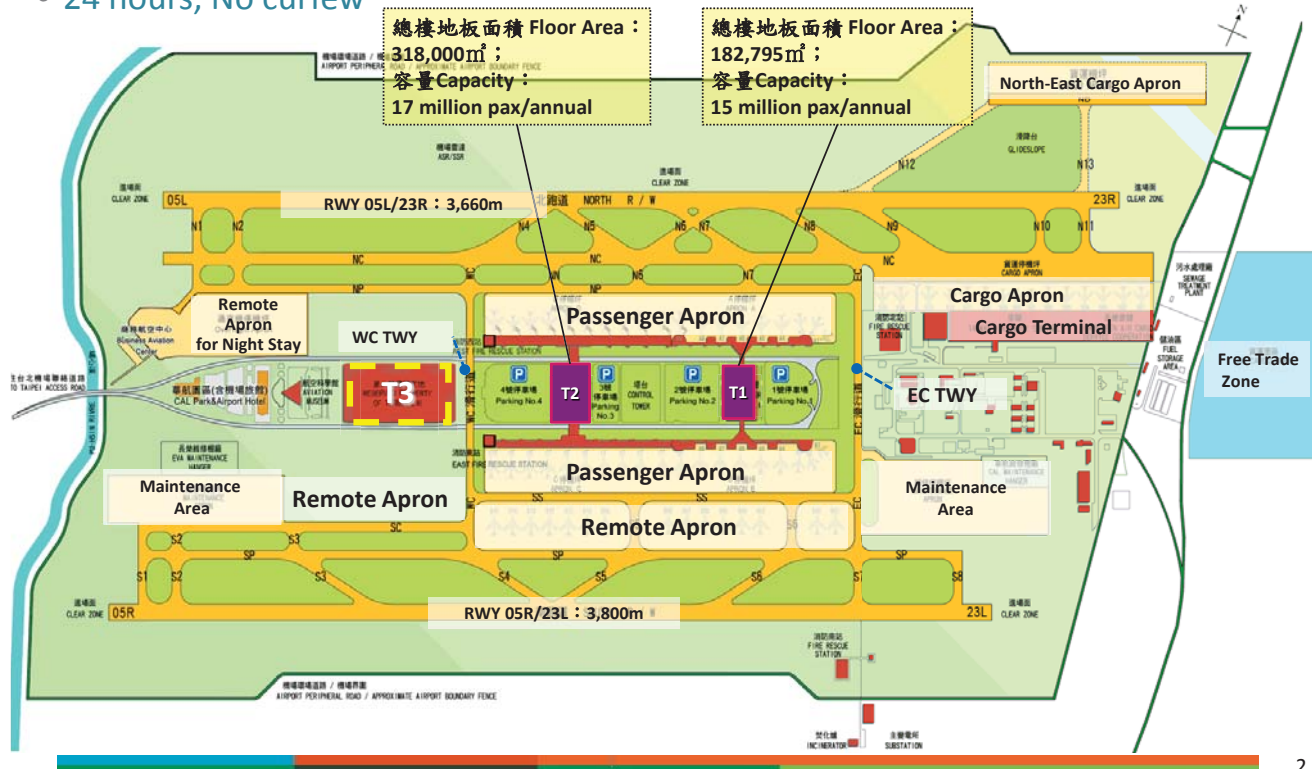
未來建設發展藍圖
Future Development Plan

3

2017 新航空費率施行
New airport charge scheme since Sept. 2017

Current Layout of the Airport Park

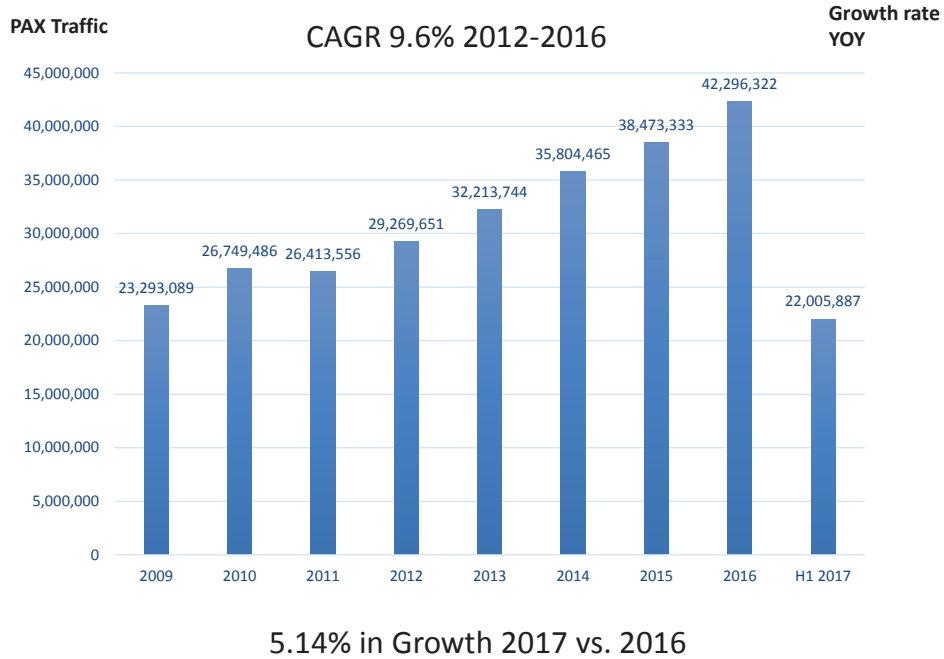
- 32M PAX capacity to accommodate 42M PAX in 2016
- 66 PAX Aprons , 25 Cargo Aprons, 31 Hangar Aprons
- 24 hours, No curfew



Fun Facts about TPE in 2016



桃園機場客運量 Passenger Traffic Volume in Past Years



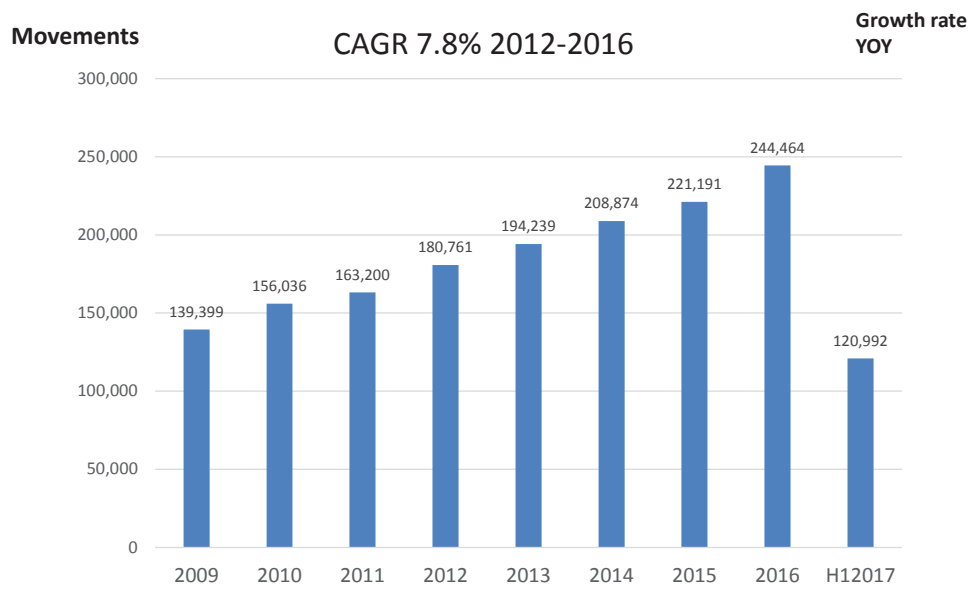
貨運量統計 Cargo traffic volume



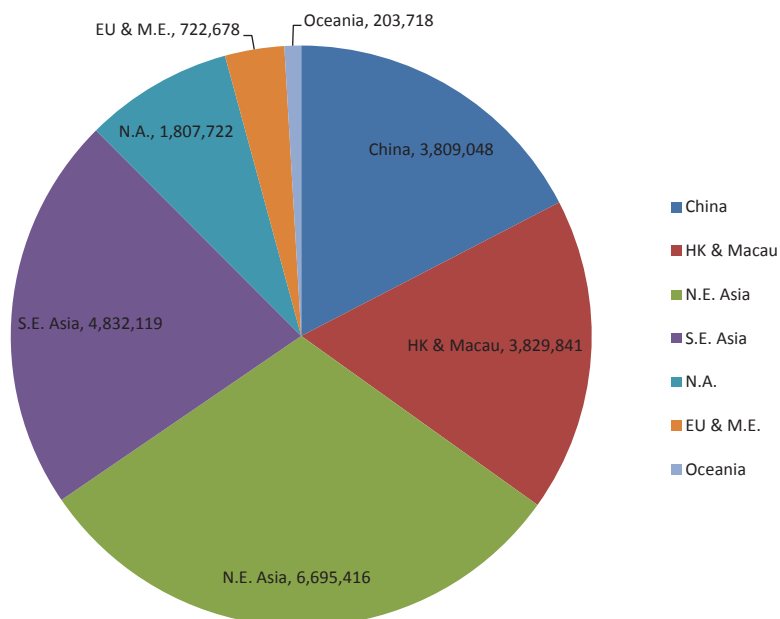
- Ranked the 6th busiest cargo airport in terms of International freight traffic 2015 by ACI.
- 50% of cargo traffic on Transit.



Aircraft movements



TPE traffic market share by region during Jan-Jun, 2017

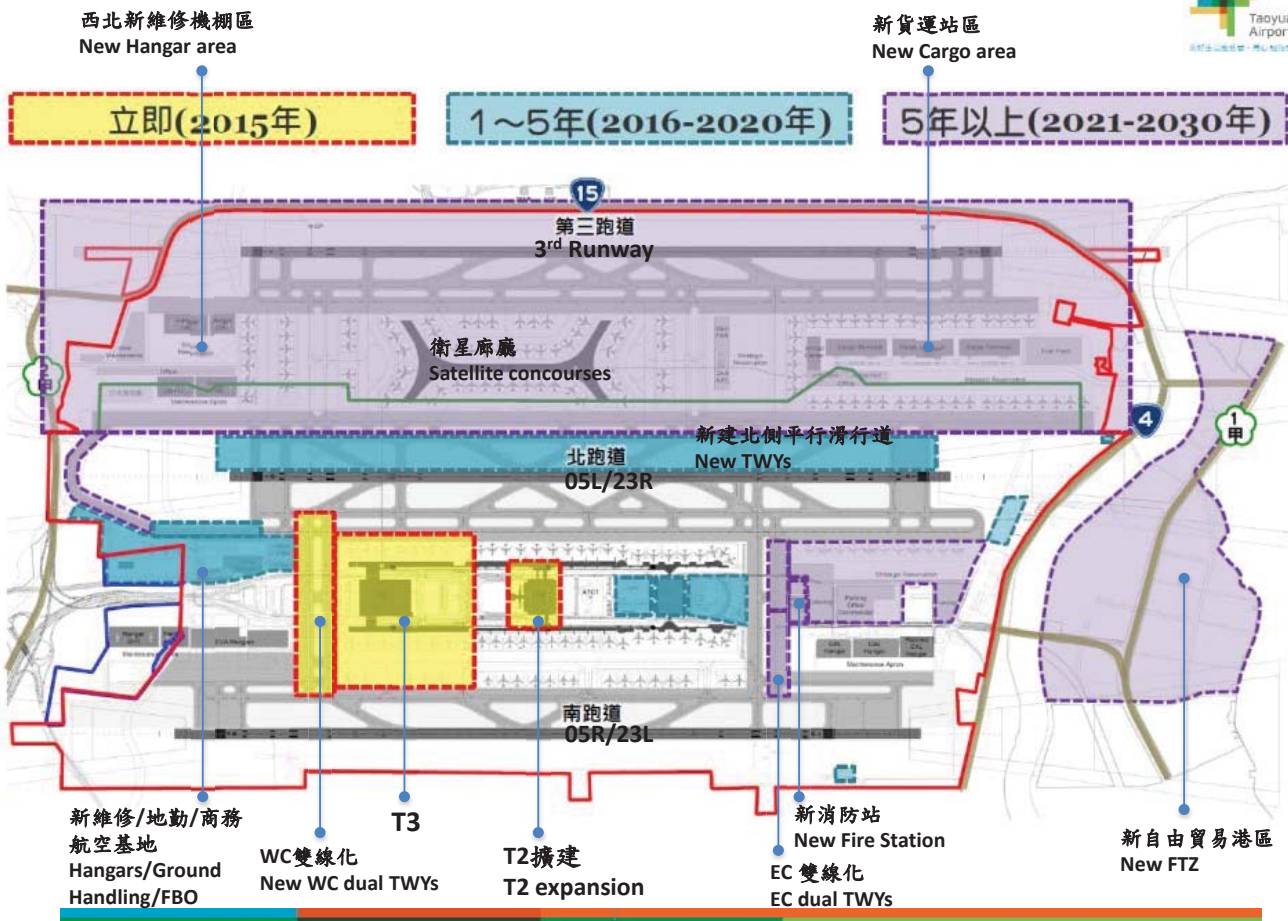


1 機場園區發展現況
The Current Status of the Airport Park

2 未來建設發展藍圖
Future Development Plan

3 2017 新航空費率施行
New airport charge scheme since Sept. 2017

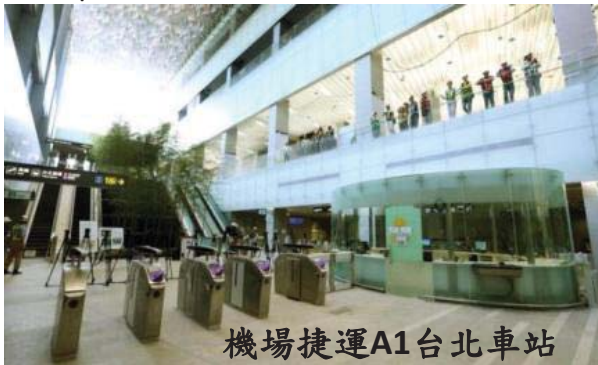
機場園區未來配置構想 The Conceptual Layout of Future Development



機捷A1台北車站預辦登機服務 (2017年2月啟用)

CUSS & Self Bag-drop in Airport express A1 station (Launch in Feb. 2017)

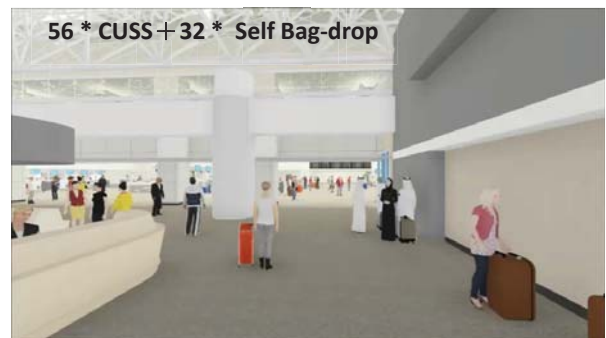
- A1 station as a smart in-town terminal for Taoyuan airport
- The first Self Bag-drop service in Taiwan & The 5th in-town check-in station in Asia
- 4 self Bag drop counters at first phase; installing 10 more at second phase.



T2擴建工程：增加500萬/年旅客容量 (2017/18)

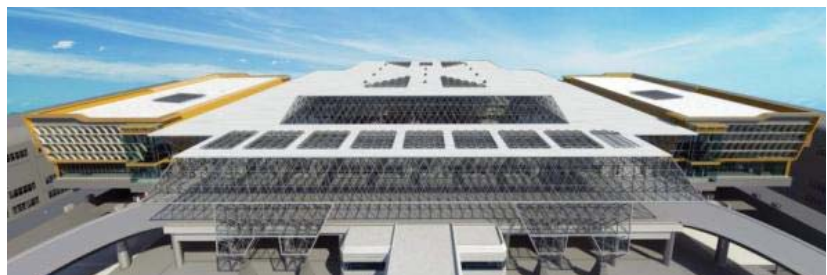
T2 Expansion: increase capacity of 5M PAX yearly (2017/18)

1. To expand 20,778 m² floor area for T2. 總樓板面積共增加20,778m²。
2. Add security check lines to 20 from 8. T2安檢線從8條增加至20條。
3. 3 times Security check area compared to now. (140m²→420m²)。
4. Aiming to complete south wing in end 2017; north wing in end 2018.



More commercial area at 4F/5F

1. Observatory restaurant
2. Museum
3. Lounge
4. Nap hotel (Capsule hotel)







第三航站區開發構想 (目標2020年完工) 圖工

The Development Concept of the T3 Area (To be Completed in 2020)

- T3主航廈之基地面積共約13.6公頃，而多用途大樓基地面積約4.8公頃
The area of T3 main building is about 13.6 ha, and that of the Multi-Function-Building is about 4.8 ha.
- 第三航站區內包含四大重要建設，另有關遠期規劃興建之北側衛星廊廳以及地下PMS之容量與結構等必須納入考量。
Four main items, added the satellite located in the north expansion land and underground PMS, should be taken into consideration.



1

機場園區發展現況

The Current Status of the Airport Park

2

未來建設發展藍圖

Future Development Plan

3

2017 新航空費率施行

New airport charge scheme since Sept. 2017

Aeronautical charges restructure

TIAC is restructuring the aeronautical charges to implement user charge rule, to enhance resource efficiency, Eco-airport, and to simplify the charges structure

User Charge

- ✓ Setting minimum of landing charge to reflect the basic cost of time slot and runway
- ✓ Baggage Charge is charged according to seats.

Resource Efficiency

- ✓ Introducing off-peak discounts to promote resource efficiency.
- ✓ Setting 30 minutes as the parking charge basis to increase the price sensitivity to parking time

Eco-airport

- ✓ The Boarding Bridge Charge integrates the GPU and air conditioner charges to promote GPU and air conditioner using.

Simplify

- ✓ To simplify the aeronautical charge structure and formulation

New Structure and Implementation

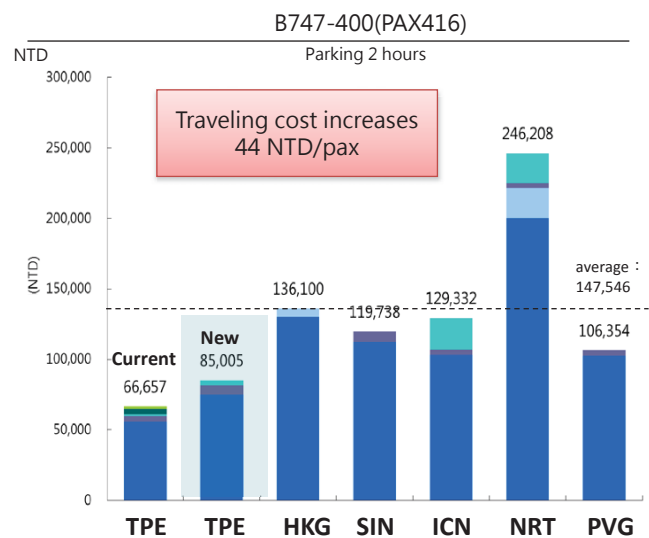
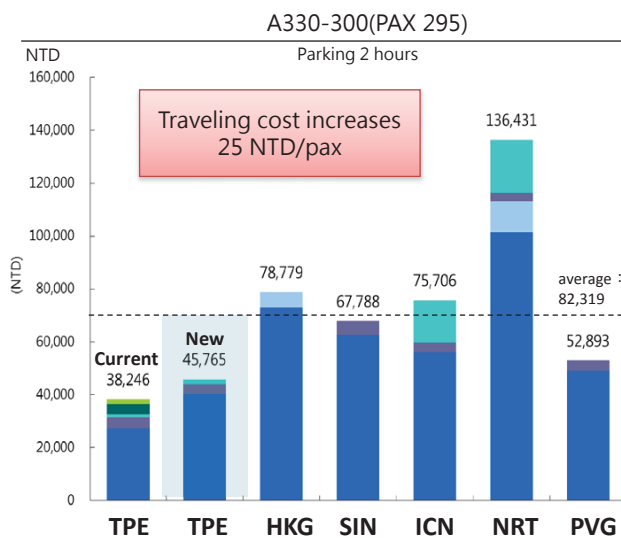
In the new structure, there will be only 4 new charges :

1. Landing, 2. Parking, 3. Boarding Bridge, and 4. Baggage

Current			New		
No.	Charges	Basis	No.	Charges	Basis
1	Landing Charge	MTOW	1	Landing Charge	MTOW
2	Parking Charge	MTOW and Parking time	2	Parking Charge	Parking stand and parking time
3	Terminal Building Service Charge	MTOW			
4	Ground Handling Area and Facilities Charge	MTOW			
5	Boarding Bridge Charge	Seats and usage	3	Boarding Bridge Charge	Number of seats
6	GPU Charge	Single/Dual outlet			
7	Air Conditioner Charge	Single/Dual outlet			
8	Automatic Baggage Handling System Fee	For departure flights only	4	Baggage Charge	Number of seats
9	Night Flight Charges	Free	Cancelled		
10	Remaining Charges	Free	Cancelled		

Market comparison

The new rate setting will not surpass average charges of other main airports in East Asia.



- Landing charge
- Parking charge
- Boarding Bridge
- Automatic Baggage Handling System Fee
- Terminal Building Service Charge
- Ground Handling Area and Facilities Charge
- GPU charge
- A.C (air conditioner)

Discount on new Airport Charge Scheme

- In order to reduce the impact on airlines, TIAC is considering a first year discount program to implement the new airport charging scheme.

Charges	Discount in first year
Landing Charges	15% off
Boarding Bridge Charges	18% off
Baggage Charge	18% off

p.s. The first year means the 12 months after new rate implementation (Sept. 1, 2017)



Thank You!