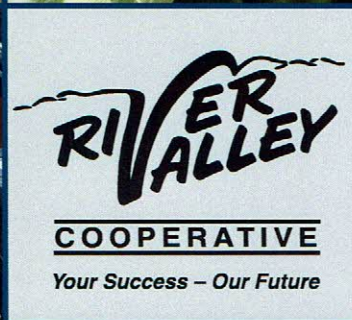


Soil Test Results

Spring 2017

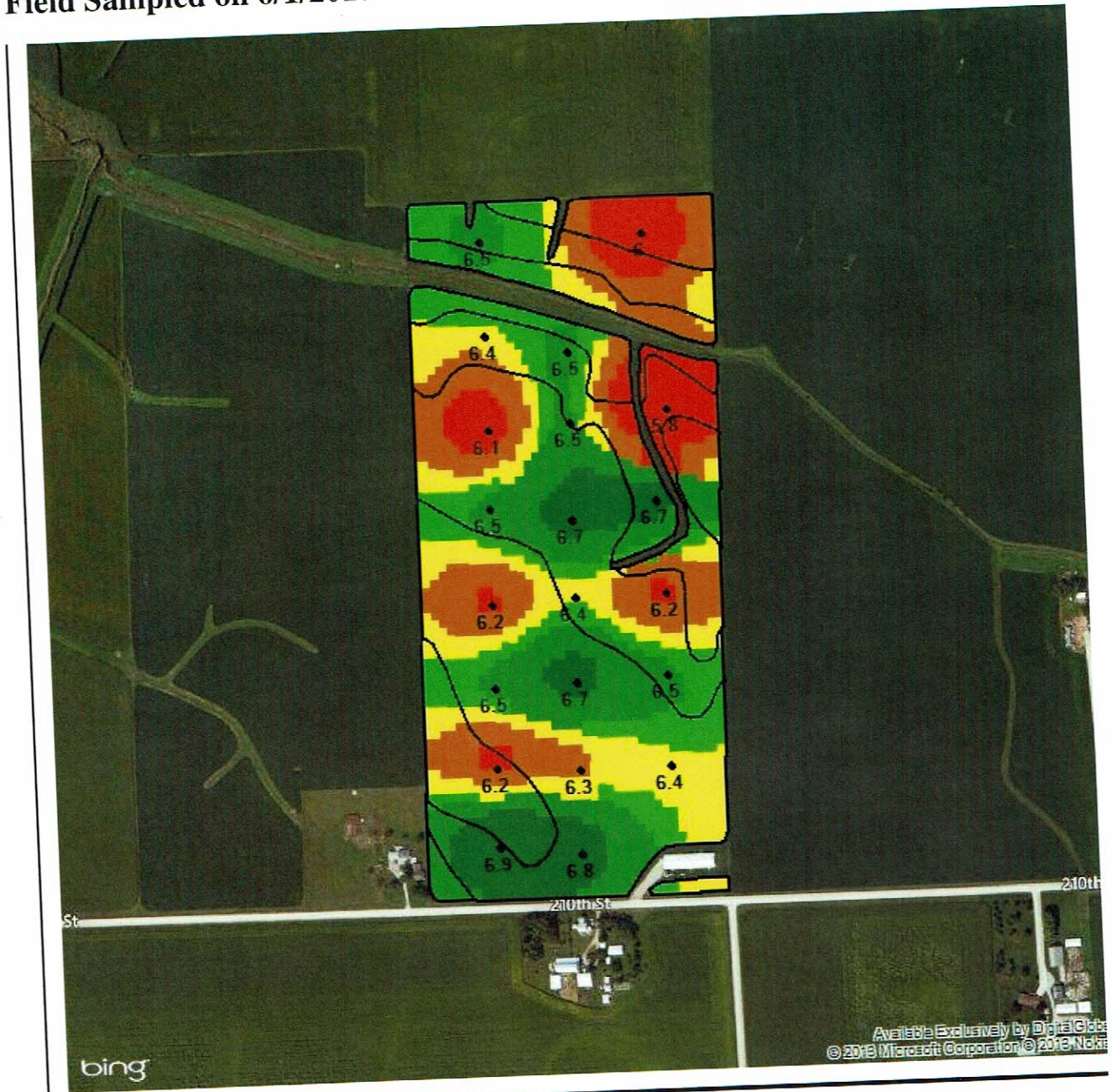
Ed & John Maxwell

Walcott North



pH

Maxwell Ed And John | Eldridge
Walcott North | Walcott North | 2017 | 65.2 acres
Field Sampled on 6/1/2017



pH	
■	5.8 to 6.2 (6.77 acres)
■	6.2 to 6.3 (13.4 acres)
■	6.3 to 6.4 (12.99 acres)
■	6.4 to 6.5 (12.14 acres)
■	6.5 to 6.6 (13.29 acres)
■	6.6 to 6.9 (6.59 acres)

Min: 5.8
Max: 6.9
Avg: 6.4



用 Line 測 pH ↑
 酸度 pH 會下

Maps as of 6/5/2017

Maxwell Ed And John | Eldridge
 Walcott North | Walcott North | 2017 | 65.2 acres
 Field Sampled on 6/1/2017

Buffer pH



Buffer pH	
■	6.6 to 6.7 (6.74 acres)
■	6.7 to 6.8 (15.02 acres)
■	6.8 to 6.8 (11.78 acres)
■	6.8 to 6.8 (10.6 acres)
■	6.8 to 7 (14.42 acres)
■	7 to 7.1 (6.6 acres)

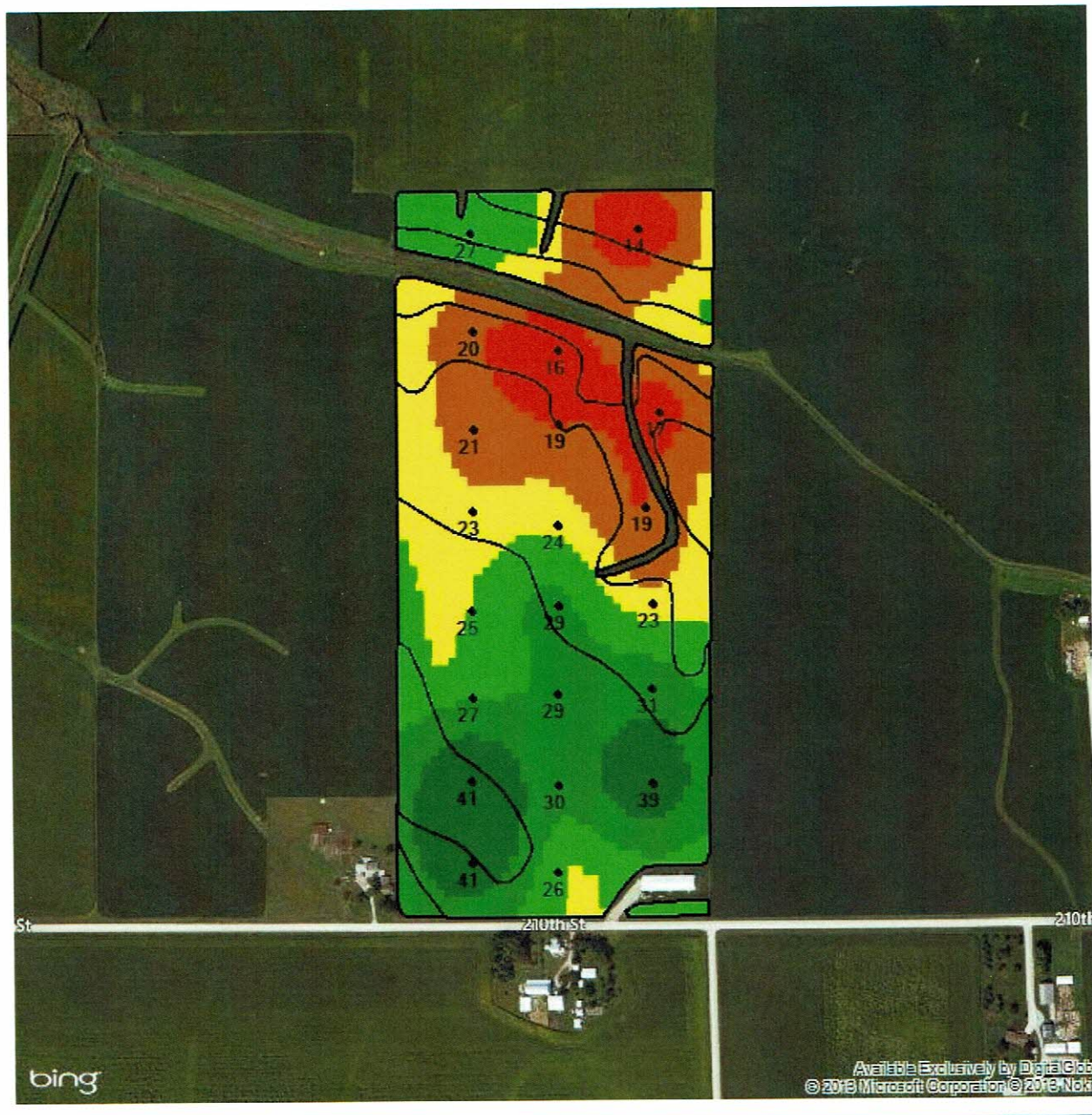
Min: 6.6
Max: 7.1
Avg: 6.8



Maps as of 6/5/2017

Maxwell Ed And John | Eldridge
 Walcott North | Walcott North | 2017 | 65.2 acres
 Field Sampled on 6/1/2017

P(ppm)



P(ppm)	
15 to 20 (6.53 acres)	
20 to 23 (13.1 acres)	
23 to 25 (13.04 acres)	
25 to 28 (12.8 acres)	
28 to 32 (13.13 acres)	
32 to 41 (6.58 acres)	

Min: 14.7
Max: 40.8
Avg: 25.6

30



Maps as of 6/5/2017

Maxwell Ed And John | Eldridge
 Walcott North | Walcott North | 2017 | 65.2 acres
 Field Sampled on 6/1/2017

K(ppm)



K(ppm)	
160 to 188	(6.49 acres)
188 to 202	(13.38 acres)
202 to 211	(12.43 acres)
211 to 225	(13.17 acres)
225 to 258	(13.05 acres)
258 to 327	(6.65 acres)

Min: 159.7
Max: 326.9
Avg: 217.4

200



Maps as of 6/5/2017

Maxwell Ed And John | Eldridge
 Walcott North | Walcott North | 2017 | 65.2 acres
 Field Sampled on 6/1/2017

OM



OM	
■	2 to 2.8 (6.52 acres)
■	2.8 to 3.1 (13.03 acres)
■	3.1 to 3.2 (13.13 acres)
■	3.2 to 3.4 (12.76 acres)
■	3.4 to 3.6 (13.15 acres)
■	3.6 to 4.3 (6.57 acres)

Min: 2
Max: 4.3
Avg: 3.2



3 ~ 4
 74 is good

103 → 0.1 ↑

Maps as of 6/5/2017

Maxwell Ed And John | Eldridge
 Walcott North | Walcott North | 2017 | 65.2 acres
 Field Sampled on 6/1/2017

CEC

cat



CEC	
■	13.9 to 16.8 (6.48 acres)
■	16.8 to 17.7 (13.61 acres)
■	17.7 to 18.1 (12.74 acres)
■	18.1 to 18.5 (12.66 acres)
■	18.5 to 19.6 (13.12 acres)
■	19.6 to 21 (6.56 acres)

Min: 13.9
Max: 21
Avg: 18.1

18 ~ 21

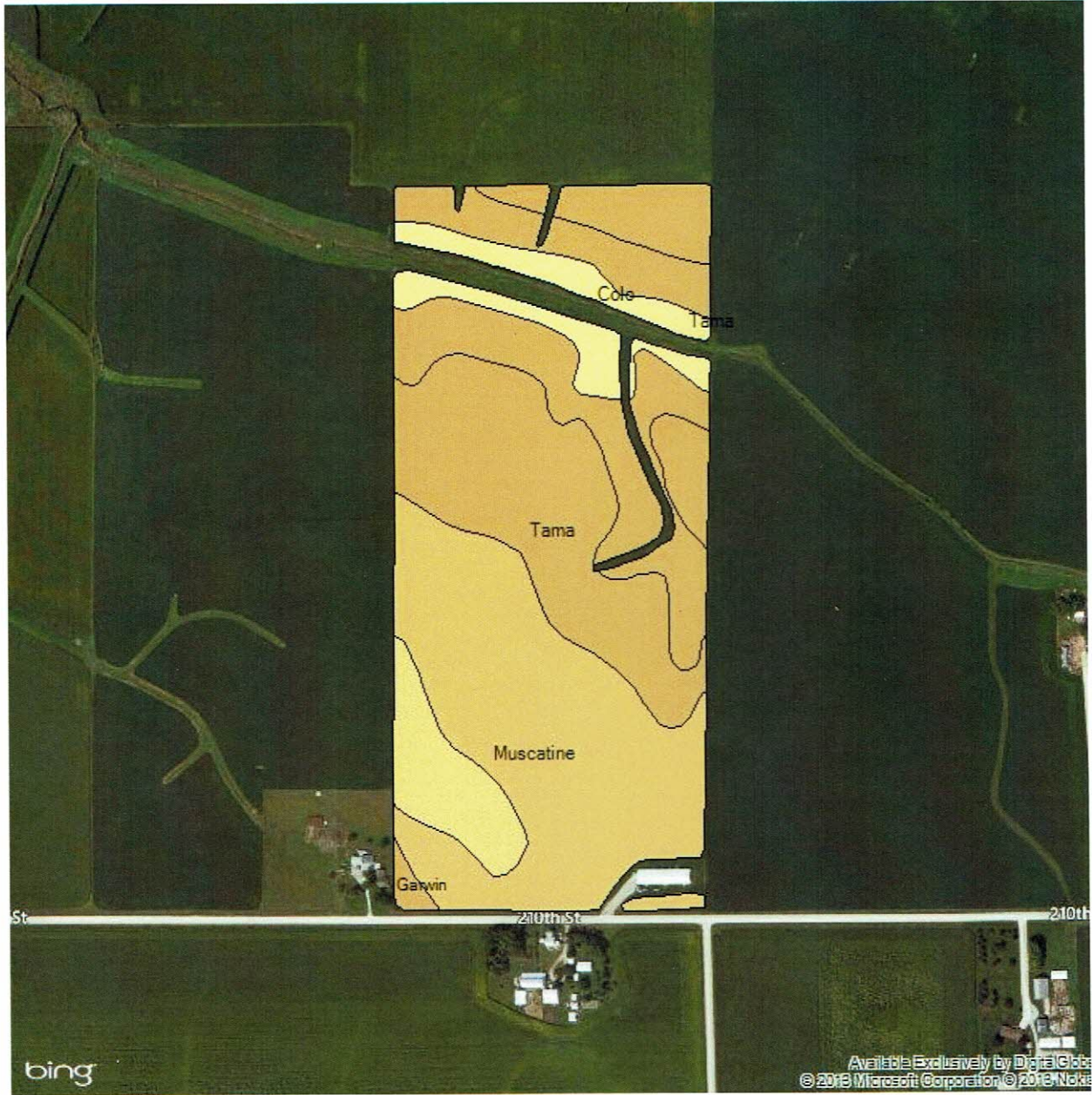
總高量應為 18.1 左右





Maps as of 6/5/2017

Maxwell Ed And John | Eldridge
Walcott North | Walcott North | 2017 | 65.2 acres
Field Sampled on 6/1/2017

Soils



Soils	
	Colo (5.16 acres)
	Garwin (4.27 acres)
	Muscatine (22.92 acres)
	Tama (32.83 acres)



Maps as of 6/5/2017

REPORT NUMBER
17-152-0415
 COMPLETED DATE
Jun 5, 2017
 RECEIVED DATE
Jun 1, 2017

ACCOUNT
7721



PAGE 1/1
 TODAY'S DATE
Jun 05, 2017

COPY TO
17423
 2nd COPY TO
26794

IDENTIFICATION
 MAXWELL ED AND JOHN
 WALCOTT NORTH
 WALCOTT NORTH

RIVER VALLEY COOP
 MASTER ACCOUNT
 PREMIER CROP SYSTEMS
 DAN FRIEBERG

RIVER VALLEY COOPERATIVE
 GRID ACCOUNT/IOWA
 108 PROGRESS LANE

GENESEO IL 61254

Lab Number	Sample ID	OM				Phosphorus				Ca ppm	Na ppm	pH	Buff index	CEC meq/100	Percent Base Saturation				Nitrate		Total lbs/A	S ppm	Zn ppm	Mn ppm	Fe ppm	Cu ppm	B ppm	Excess Soluble Lime Rate	NH3-N ppm	MP3 Color ppm	
		%	P1 ppm	P2 ppm	Bic ppm	K ppm	Mg ppm	P ppm	Bic ppm						K ppm	Mg ppm	Ca ppm	H ppm	Na ppm	Surface lbs/A											depth
31432525	1	4.3	41	52		202	502	3283			6.9	21.1	2.5	19.8	77.7	0.0			0-6												
31432527	2	3.6	41	59		292	456	2735			6.2	6.7	20.7	3.6	18.4	66.1	11.9		0-6												
31432528	3	3.5	27	35		173	308	2727			6.5	6.8	17.9	2.5	14.3	76.2	7.0		0-6												
31432529	4	3.4	25	42		184	331	2987			6.2	6.7	20.7	2.3	13.3	72.1	12.3		0-6												
31432530	5	2.9	23	28		196	300	2690			6.5	6.8	17.8	2.8	14.0	75.6	7.6		0-6												
31432531	6	3.1	21	28		255	296	2359			6.1	6.7	17.3	3.8	14.3	68.2	13.7		0-6												
31432532	7	3.0	20	30		234	392	2510			6.4	6.8	18.0	3.3	18.1	69.7	8.9		0-6												
31432533	8	2.9	16	24		195	365	2517			6.5	6.8	17.4	2.9	17.5	72.3	7.3		0-6												
31432534	9	3.0	19	31		196	305	2271			6.5	6.8	15.6	3.2	16.3	72.8	7.7		0-6												
31432535	10	2.8	24	31		212	289	2177			6.7	13.8	3.9	17.5	78.6	0.0			0-6												
31432536	11	3.3	29	36		205	449	2762			6.4	6.7	19.9	2.6	18.8	69.4	9.2		0-6												
31432537	12	3.5	29	44		195	319	2797			6.7	17.1	2.9	15.5	81.6	0.0			0-6												
31432538	13	3.5	30	44		205	310	2597			6.3	6.7	18.0	2.9	14.4	72.1	10.6		0-6												
31432539	14	4.0	26	39		181	385	2982			6.8	18.6	2.5	17.2	80.3	0.0			0-6												
31432540	15	3.7	39	55		331	351	3070			6.4	6.7	21.0	4.0	13.9	73.1	9.0		0-6												
31432541	16	3.4	31	43		316	312	2711			6.5	6.8	18.4	4.4	14.1	73.7	7.8		0-6												
31432542	17	3.3	23	31		241	343	2582			6.2	6.7	18.6	3.3	15.4	69.4	11.9		0-6												
31432543	18	2.3	19	26		173	585	2457			6.7	17.6	2.5	27.7	69.8	0.0			0-6												
31432544	19	2.0	17	22		158	516	2022			5.8	6.6	18.3	2.2	23.5	55.2	19.1		0-6												
31432545	20	3.1	27	36		226	364	2351			6.5	6.8	16.6	3.5	18.3	70.8	7.4		0-6												
31432546	21	3.0	14	18		192	252	2188			6.0	6.7	15.9	3.1	13.2	68.8	14.9		0-6												

31432542
 43

The above analytical results apply only to the sample(s) submitted. Samples are retained a maximum of 30 days. Our reports and letters are for the exclusive and confidential use of our clients and may not be reproduced in whole or in part, nor may any reference be made to the work, the results, or the company in any advertising, news release, or other public announcements without obtaining our prior written authorization.