



Towards a Sustainable Health System

Chi-Kung Ho, M.D., M.P.H.

Deputy Minister, Ministry of Health and Welfare

JUN 9, 2017

Outline



Ministry of Health and Welfare



Taiwan at a glance



Health and welfare system



Future prospects and aspirations



Ministry of Health and Welfare

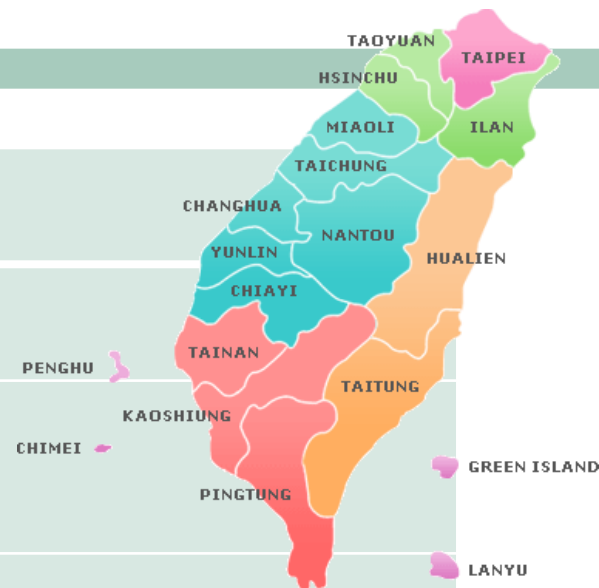
Taiwan at a glance

A snapshot of Taiwan



Ministry of Health and Welfare

Population	23 million
Land area	36,191 km ²
ageing population (2016)	12.8%
GDP (2015)	US \$ 22,294 per capita US \$ 46,783 per capita (ppp)
NHE (2015)	US \$ 1,462 per capita
NHE to GDP (2015)	6.14%
Life expectancy (2015)	77 (M) / 83.6 (F)/80(Total)





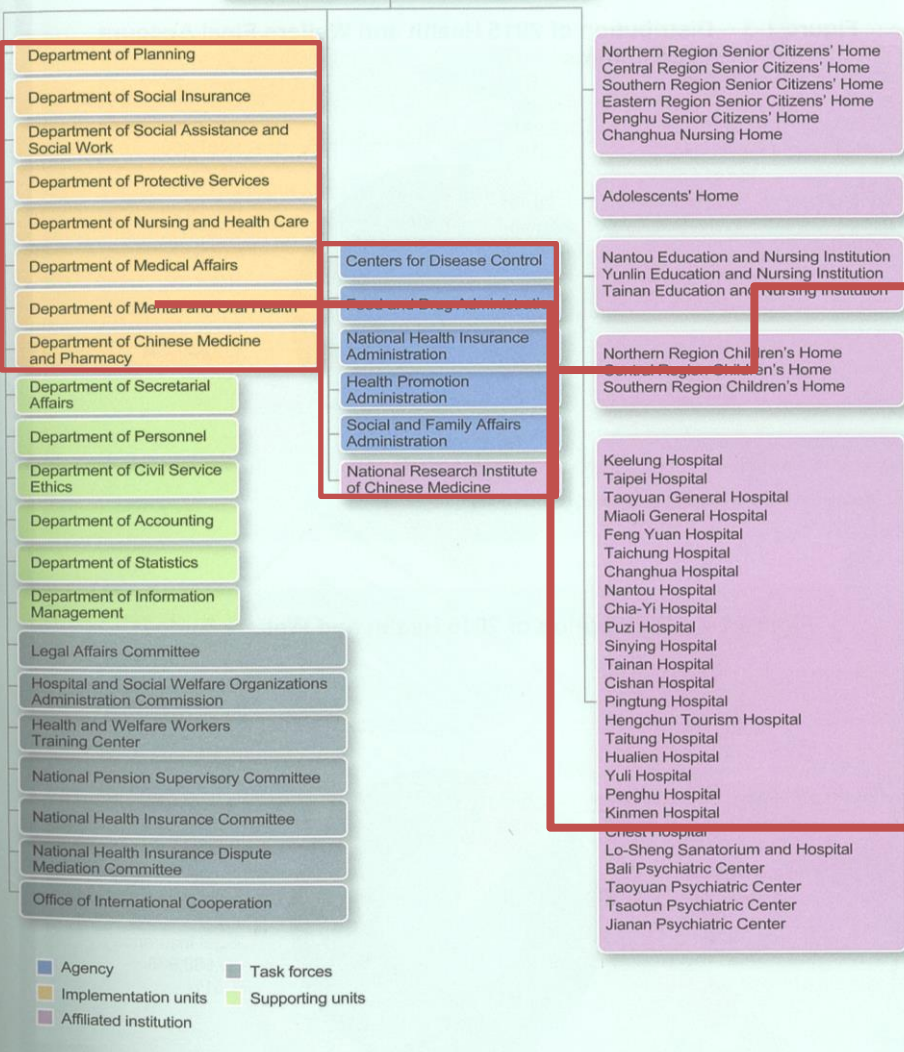
Ministry of Health and Welfare

Health and welfare system In Taiwan



衛生福利部

Ministry of Health and Welfare (MOHW)



Ministry of Health and Welfare (MOHW)

Agency

Centers for Disease Control	Food and Drug Administration
National Health Insurance Administration	Health Promotion Administration
Social and Family Affairs Administration	National Research Institute Of Chinese Medicine

Implementation units

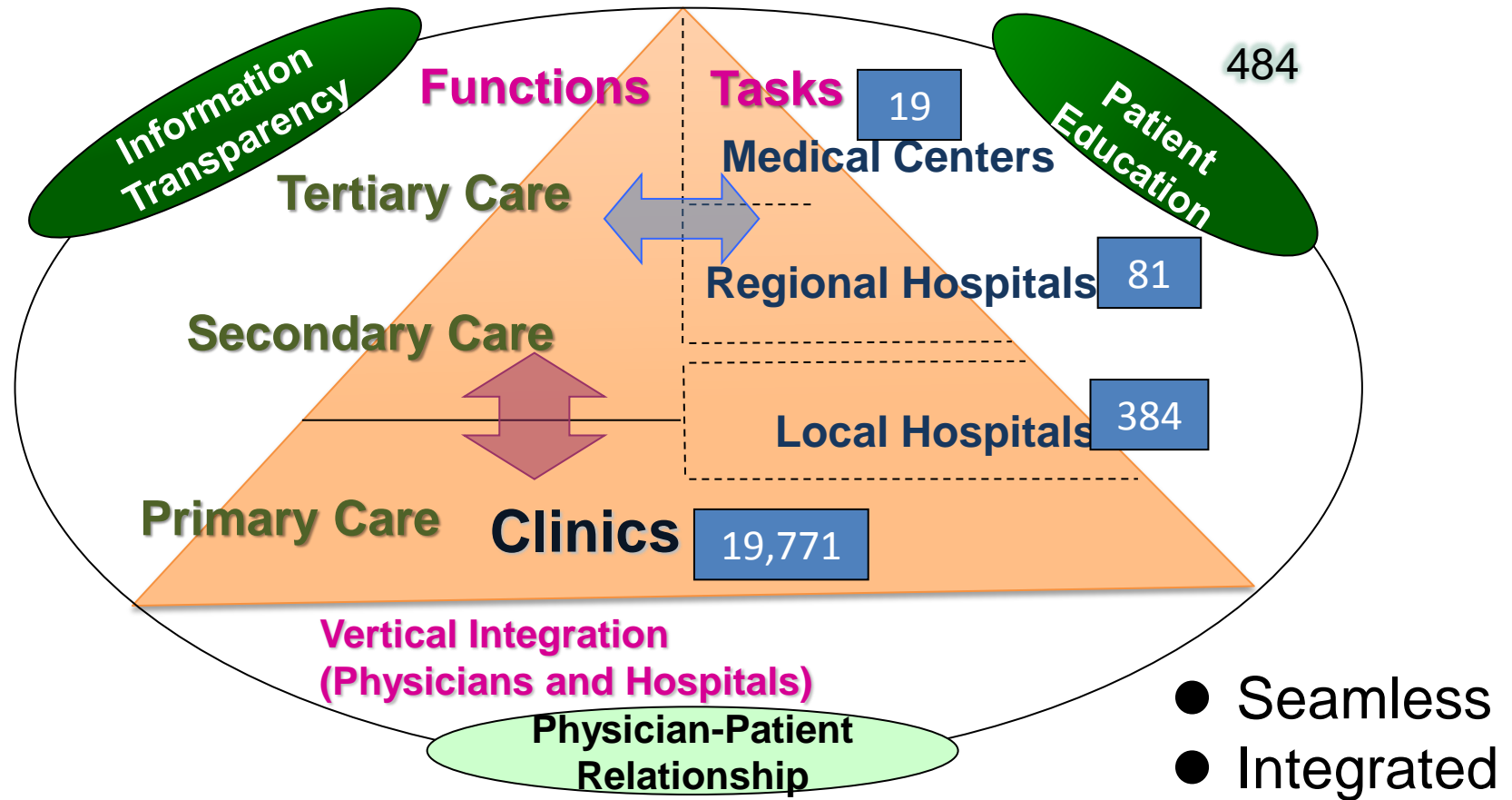
Department of Planning	Department of Protective Services
Department of Medical Affairs	Department of Mental and Oral Health
Department of Social Insurance	Department of Nursing and Health Care
Department of Chinese Medicine and Pharmacy	Department of Social Assistance and Social Work

■ Agency
■ Task forces
■ Implementation units
■ Supporting units
■ Affiliated institution

Structure of Healthcare System in Taiwan



Ministry of Health and Welfare



Features of the National Health Insurance Scheme



Ministry of Health and Welfare

Coverages	Compulsory enrollment for all citizens and legal residents (99.6% of the population is covered by the NHI)
Administration	Single-payer system run by the government
Financing	Premiums, copayment
Benefits	Uniform package, comprehensive benefits
Providers	93.5% of healthcare providers contracted with NHI
Payment	Plural payment programs under the global budget payment systems
Privileges	Premium subsidies and copayment waivers for the disadvantaged
Satisfaction	81% (2015)

NHI: Comprehensive and Uniform Benefits



Ministry of Health and Welfare

Disease

Injury

Maternity Care

- Inpatient care
- Outpatient care
- Prescription drugs
- Dental services (orthodontics, prosthodontics excluded)
- Traditional Chinese medicine
- Day care for the mentally ill
- Home nursing care

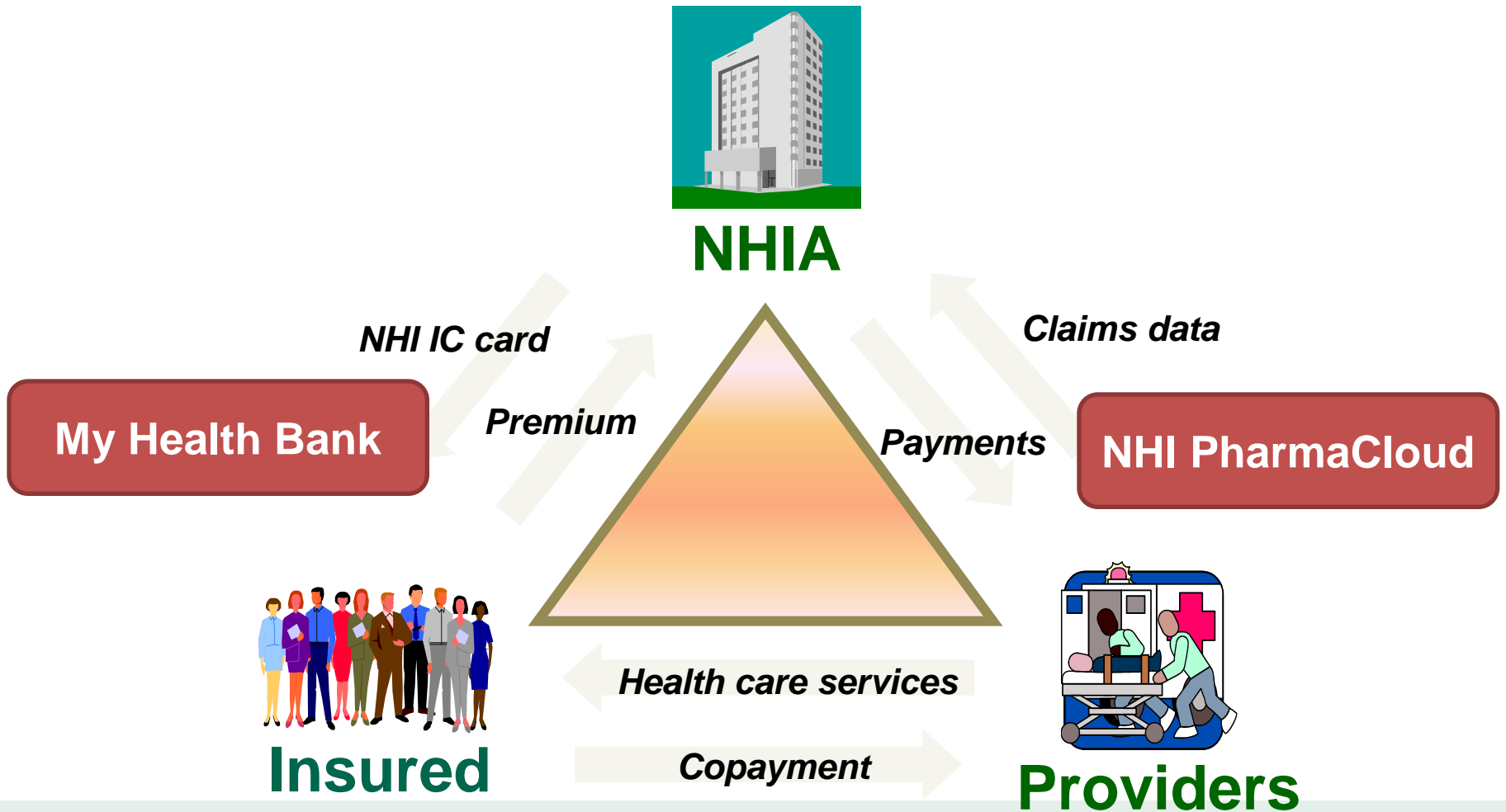
Advancement in Health Information Technology



Ministry of Health and Welfare



NHIA



NHI IC card

My Health Bank

Premium

Claims data

Payments

NHI PharmaCloud



Insured

Health care services



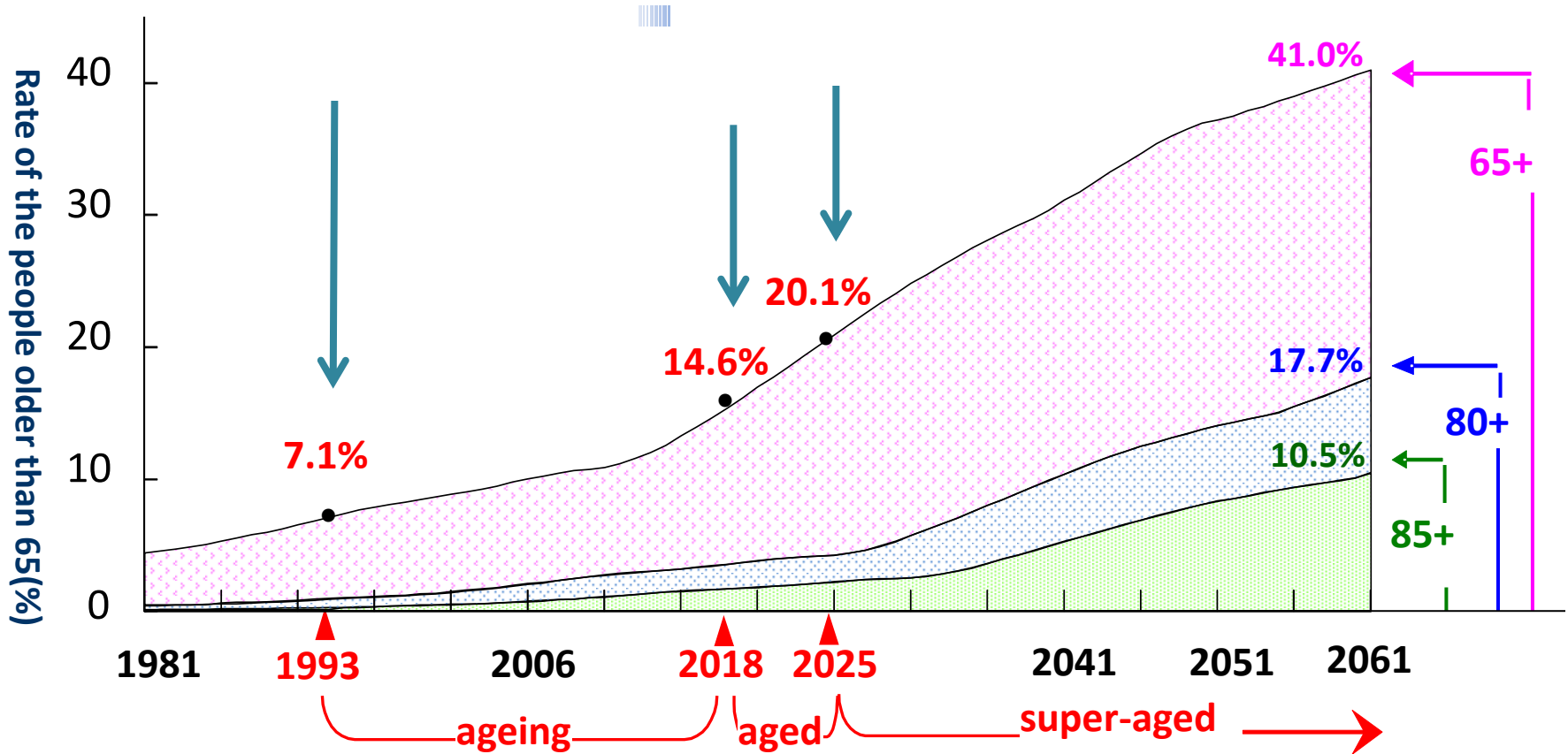
Providers

Copayment

Issues of a aging population



Ministry of Health and Welfare



Source: Population speculation, Economic Development, Taiwan, R.O.C (2014 to 2061)

The Development of Long Term Care



Ministry of Health and Welfare

1998

Strengthening Elderly Nursing Services Program & 3 Year Elderly Long-Term Care Planning

2000-2003

Construction of Long-Term Care Pilot Planning

2002-2007

Care and Welfare as well as Industry Development Program

2008

10 Year Long Term Care Planning 1.0

2015

Long-term Care Services Act

2017

10 Year Long Term Care Planning 2.0

Long Term Care 2.0:

The Holistic Community Care Model



Ministry of Health and Welfare

When you are sick..

Medical Care



Acute, Sub-acute, and rehabilitation medical services

Outpatient, hospitalization

Provide transportation services regularly in small area



When you need care...



Care

e.g. day care, family support service, Community rehabilitation service, dementia care stations, welfare services for the Disabled

Home care

Receive service at home



Clinics, hospitals in the living area

Healthy living



Life support and prevention

Establish A-B-C model

- A- Integrated Community Service Center
- B- Multiple Service Center
- C- Long-term Care station



LTC management

Assesses the disabled needs

Policy communication and outreach



Ministry of Health and Welfare

Traditional Policy communication and outreach channels

- TV and radio commercial advertisement
- Newspaper and magazine
- Poster
- Website



Lack of effective communication and outreach channels in new media



Expand new media to communicate with citizens in a timely manner



Ministry of Health and Welfare

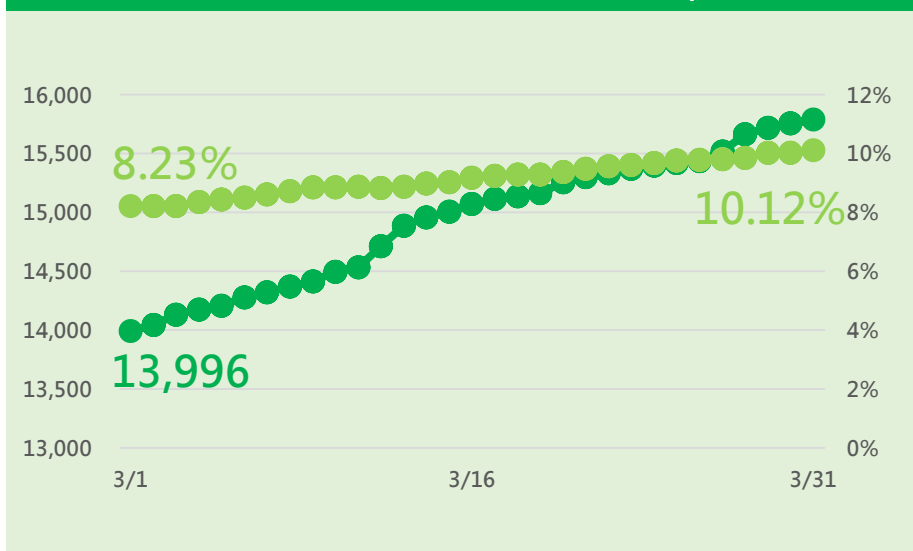
line@



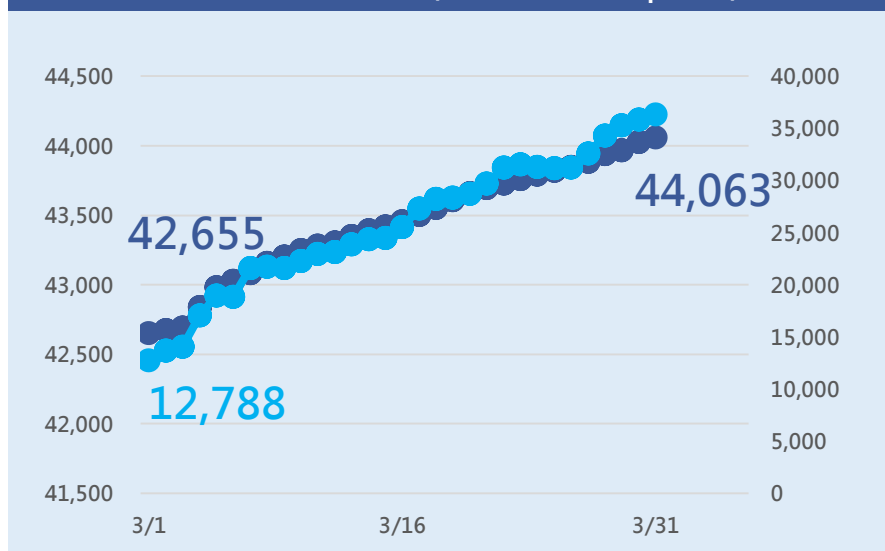
Facebook



MOHW Line@ (2017/3 : 15 posts)



MOHW FB (2017/03 : 11 posts)



— Subscribe — Block rate

— Followers — Average engagement



Ministry of Health and Welfare

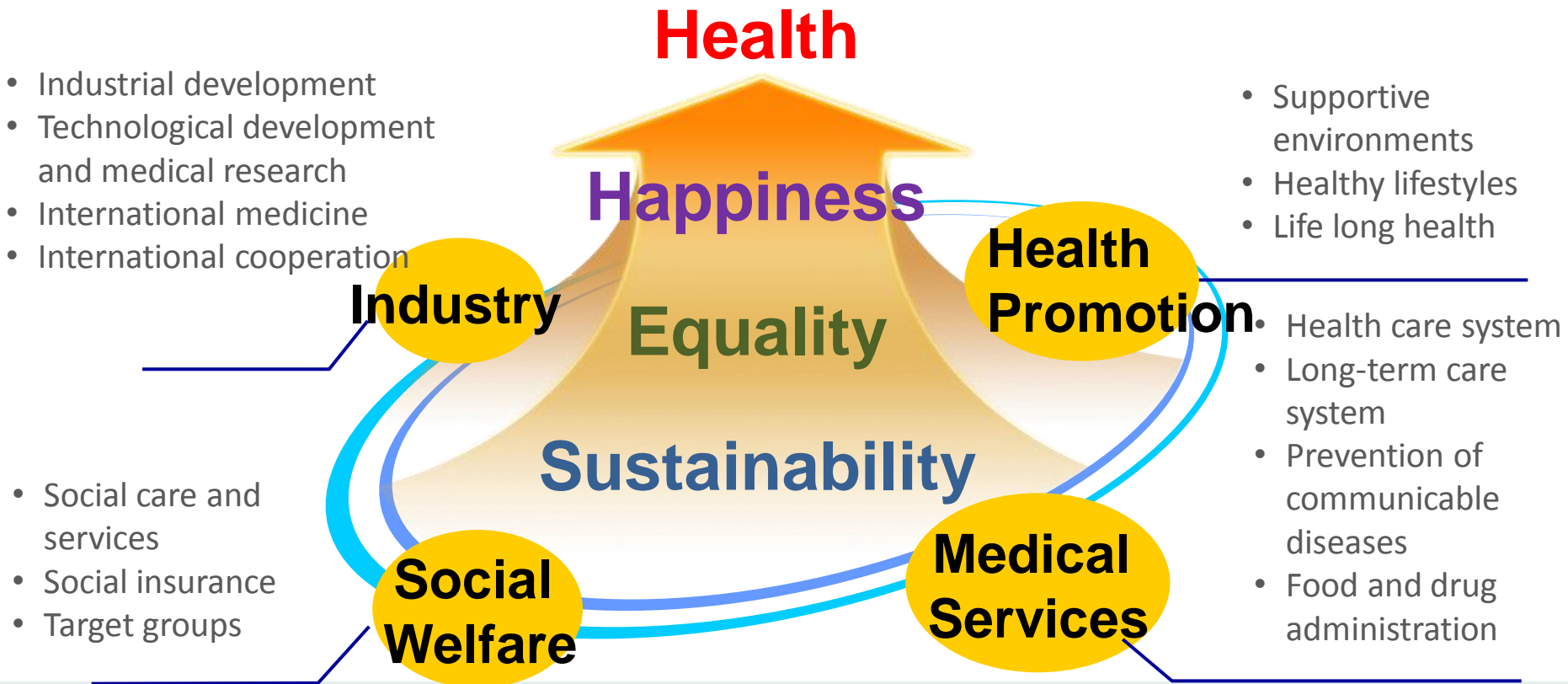
Future prospects and aspirations

Goals and Core Values of Health 2025



Ministry of Health and Welfare

Promote health and well-being





Ministry of Health and Welfare

Thanks for your attention!

