

**We
provide you
with the
best support**



Osaka Investment Guide

Access to Osaka, Kansai International Airport



Population (Year 2014) (Country/Region · City)

(a million)

Country or Region	Population
U.S.A.	321.8
Japan	126.9
Mexico	127.0
Germany	80.7
Australia	24.0
Osaka Pref.	8.8

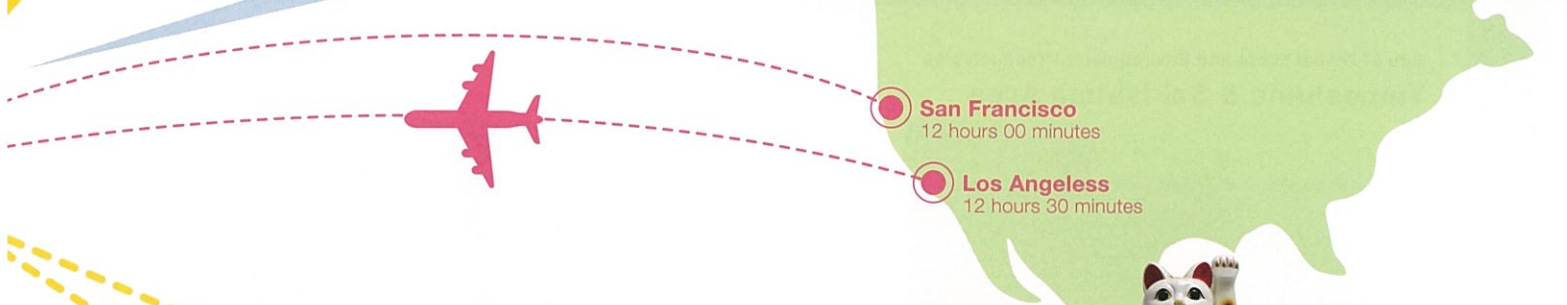
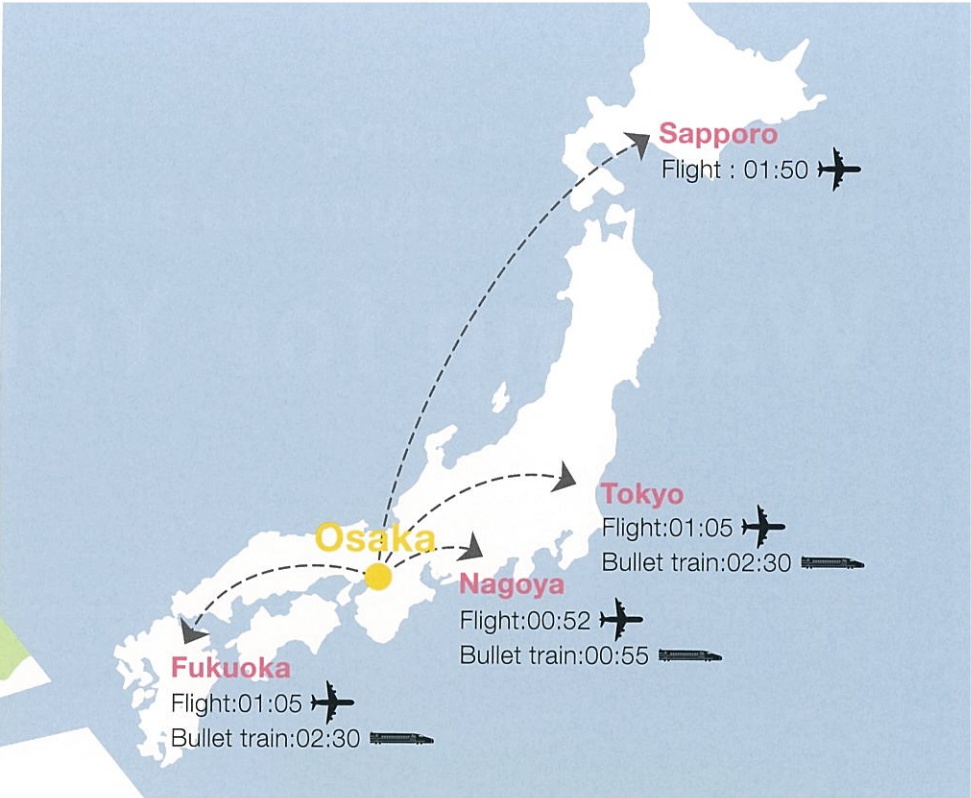
(a thousand)

City	Population
Seoul (South Korea)	10,008
Jakarta (Indonesia)	9,608
Osaka Pref.	8,850
Guangzhou (China)	8,525
New York (U.S.A.)	8,337
Bangkok (Thailand)	8,305

World Statistics 2016,
Statistics Bureau, Ministry of Internal Affairs and Communications
For Osaka, data is based on Osaka Prefectural Government (as of October 1, 2014)

Short access to world major cities

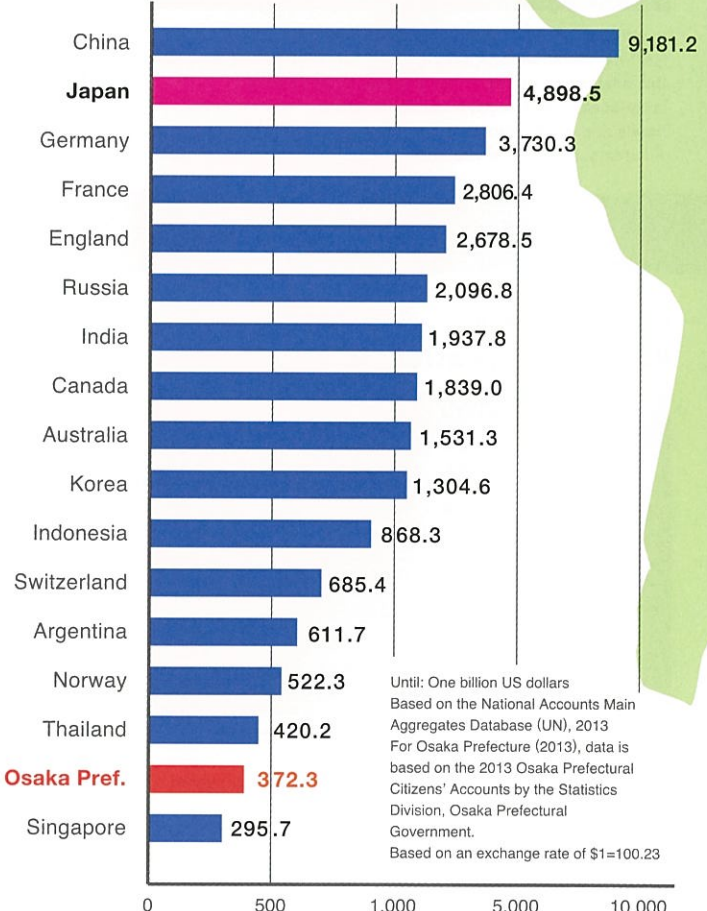
Osaka
Kansai International Airport



Kansai Region



GDP (Year 2013) (Gross Domestic Product)



In the Special Zone, business opportunities are... Waiting for You!



Kansai Innovation Comprehensive Global Strategic Special Zone

Integrating Industries and Functions – the Engines of Economic Growth. Making full use of the Kansai's potential in medical facilities, universities, and research centers, we have formed a hub for international competition in the new energy and life science industries.

Kansai National Strategic Special Zone (All Area of Osaka, Hyogo, and Kyoto)

Forms a hub for international innovation in the medical fields, etc. We look to be an international city that maintains a solid business environment (including R&D and commercialization of the latest medical products/equipment) and attracts entrepreneurial talent.

Special Zone for Growing Industries (Special Cluster Zone for Growing Industries)

Strengthening the initiatives of the Kansai Innovation Comprehensive Global Strategic Special Zone, we have established the Special Zone for Growing Industries. We support business enterprises in the new energy and life science fields!

Hub of Global Trade and Environmental Technologies Yumeshima & Sakishima Area



In addition to the corporate headquarters, R&D / orientation locations, and government bodies available, this area offers full MICE functionality in the form of large-scale international trade show space, hotels and other spaces. An area suitable for environmental and new energy industries.

Global Logistics Hub Hanshin Port Area



Made up of Osaka Port and Kobe Port, the Hanshin Port Area is the largest distribution point in West Japan, handling 1/4 of all cargo containers in the country. As a strategic port for international containers, this area is gathering high-order logistical functioning and can meet the needs of international distribution.

Global Logistics Hub Kansai International Airport Area



Linked with major Japanese cities and 70 cities abroad. The only 24 hour/day airport in Japan provides a "cool chain" meeting the highest global standards.

Kyoto Univers
(Kumatori Tow

Hub for Pharmaceuticals,
Medical Equipment and Regenerative Medicine

Northern Osaka Area (Saito etc.)



This will become a center attracting facilities related to the life sciences. With a supportive network combining industry, academia, and government, this location is perfect as an R&D or business base for pharmaceutical and medical device industries.

A New Hub for the Health and Medical Fields

Northern Osaka Health and Biomedical Innovation Town (NohBIT)



Taking advantage of the National Cerebral and Cardiovascular Center's location change, NohBIT continues to add functionality in the health and medical industries.

Located in a close proximity to Umeda and Shin-Osaka stations and convenient access to transportation, we expect this area to develop into a new R&D center for the health and medical fields.

Hub of 'Knowledge'

Osaka Station North Area



Features excellent access to major cities in the Kansai region, and an assortment of the largest municipal functions in West Japan. With a variety of enterprises, universities and research centers collaborating with the general public, this knowledge capital is creating new intellectual value and is indeed a hub for the accumulation of knowledge.

Ohtatoshiba cho, Ibaraki City
University of Osaka Suita campus (Suita City)

Osaka Prefecture University
Nakamozu campus (Sakai City)

Research Reactor Institute

Of course! Osaka!! Perfect home for your business!



5 Benefits of Doing Business in Osaka

1 It's the third biggest market in the world! The Osaka-Kyoto-Kobe metropolitan area.

1	Tokyo-Kawasaki-Yokohama
2	New York-Philadelphia-Newark
3	Osaka-Kyoto-Kobe
4	Los Angeles
5	Nagoya
6	Chicago-Milwaukee
7	London

2009 Urban GRP Survey
University of Toronto, Martin Prosperity Institute

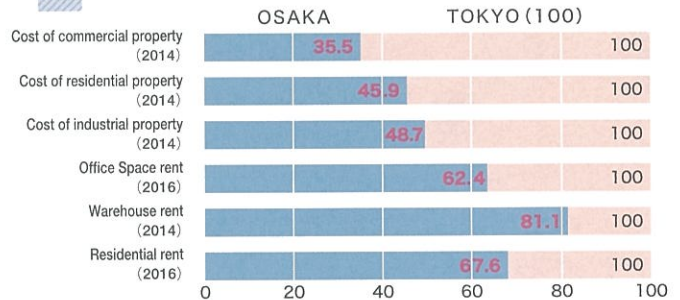
3 Accumulation of World-Class Companies Osaka is home to 8 of the world's top 500 companies!

- Panasonic Corporation
- Nippon Life Insurance Company
- Itochu Corporation
- Sumitomo Life Insurance Company
- The Kansai Electric Power Co., Inc.
- Sumitomo Electric Industries, Ltd
- Daiwa House Industries Co., Ltd
- Sharp Corporation

2013 Global500 (Ranking of World's Top 500 Companies) -Fortune magazine

2 Business costs far lower than Tokyo

Comparative Cost of Business in Osaka and Tokyo (Index with Tokyo set as 100)



4 Small / Mid-sized Enterprises (SME) Boasting Nationally Leading Technologies

Number of manufacturing companies : 43,796 2nd largest in Japan
Number of employees in manufacturing : 642,781 people 3rd largest in Japan
Shipment value : about 16 trillion yen 3rd largest in Japan

Number of international patent applications : 8,748-2nd in Japan



Artificial satellite
Maito- 1 satellite



Never loosens
Anti-loosening Hard Lock Nut

Materials : "Economic Census" - Ministry of Internal Affairs and Communication (2014 - preliminary results)
"Industrial and Commercial Statistics (Industry)" - Ministry of Economy, Trade, and Industry (2013)
"Japan Patent Office Annual Report" - Japan Patent Office (2013)

5 Complete Business and Research Support MOBIO (Monozukuri Business Information-center Osaka)

Develop support and consultations services for manufacturing (monozukuri) in regards technology, intellectual property, market cultivation, and corporate management.

Technology Research Institute of Osaka Prefecture

Technological partner for SMEs in manufacturing.

We support product development and solutions for technological issues via technology consultation, request testing, device utilization and subcontracted research.

Osaka Prefecture has been designated as a location for two types of Special Zones!



National Support System

Kansai Innovation Comprehensive Global Strategic Special Zone

1.Special measures of the system and stipulations

Revision of laws, regulations, and ordinances, and special application of order-made measures is possible.

2.Support measures for taxes

(1) Special amortization: 40% of acquisition price of facilities or equipment (20% for the actual building)

(2) Investment tax exemption: 12% of acquisition price for facilities, equipment. (6% for buildings, etc.)

*Either (1) or (2) above is applicable.

3.Support measures regarding finances

Comprehensive Special Zone Support Interest Subsidy Fund (Maximum of 0.7% interest subsidy for all financing from financial institutions)

4.Financial and Governmental Support Measures

Support by utilizing Comprehensive Special Zone Promotion and Coordination budgets.

Kansai National Strategic Special Zone

1.Special measures of the system and stipulations

Break through the bedrock stipulations with integrated stipulation revision and focused promotion.

2.Support measures for taxes

(1) Special amortization: 50% of acquisition price of facility and equipment (25% for building)

(2) Investment tax exemption: 15% of acquisition price for facilities, equipment. (8% for buildings, etc.)

(3) Income tax exemption: 20% of income earned by businesses where special measures play an important role, including medicine, international, agriculture, and certain IoT(Enterprises established less than 5 years prior are eligible.)

*Only one of (1), (2) or (3) above is applicable.

3.Support measures regarding finances

Comprehensive Special Zone Support Interest Subsidy Fund (Maximum of 0.7% interest subsidy for all financing from financial institutions)

Osaka eSPECIALLY supports growing industries in the SPECIAL ZONE!



Osaka's Unique Support System (Tax Incentive System for Special Zone for Growing Industries)

In Osaka, we have established Tax Incentive System for Special Cluster Zone for Growing Industries (Tax Incentive System for Special Zone for Growing Industries). We support business enterprises that will set up business in the new energy and life science fields!

Enterprises in the life science and new energy fields that are engaging in advanced business in the Special Zone for Growing Industries are eligible.

Osaka Prefectural taxes (Real Estate Acquisition Tax, Corporate Prefectural Resident Tax, Corporate Enterprise Tax) can be reduced

Benefit 1 Up to 100% reduction in taxes for acquisition of real estate. The larger investment, the larger the reduction

Benefit 2 Reduction of prefectural corporate taxes and corporate enterprise taxes for up to 10 years

-A system linked with the tax reduction and subsidy incentive systems in local municipalities-

For companies newly establishing business in Osaka, the Osaka Prefectural taxes are ZERO yen.

For companies relocating from within Osaka Prefecture, the reduction is based on the percentage of increase of employees.

..... Eligible Business

New Energies

- Environmentally-friendly automobiles
- Solar/wind power, etc.
- Smart communities
- Storage battery - related
- Energy-conserving devices
- Hydrogen-related

Life Sciences

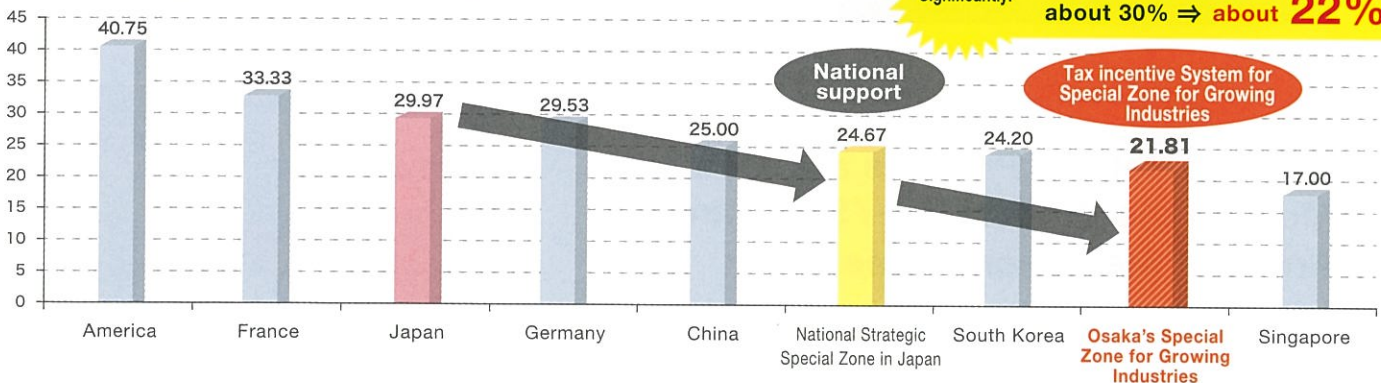
- Medical products/Medical devices
- Regenerative therapy, etc.
- Clinical trials and research
- Medical/care-giving robots
- Medical information systems
- Medical facilities/organization
- Health-related

Comparing Effective Corporation Tax Rates

Comparing Effective Corporation Tax Rates for Osaka's Special Zone for Growing Industries

Through efficient use of the national tax incentives and Osaka's Special Zone for Growing Industries Tax Incentive System, Japan's relatively "high" effective corporate tax rate is reduced to the low rates found in East Asian nations!

Effective Corporate Tax Rate (%) (from April 2016)



○ Maximum rate – possible if certified as a National Strategic Special Zone, approved by the local municipality enacting the tax reduction system and approval on behalf of Osaka Prefecture.

*Based on Ministry of Finance's "International Comparison of Effective Tax Rates for Corporate Earnings Taxation"

We support businesses in the storage battery, hydrogen and fuel cell fields!



Main Initiatives in the New Energy Field 1

One of the World's Largest - "Testing and Evaluation Center for Large Storage Batteries" Completed in the Bay Area of Osaka. (Sakishima Area)

Driving force to establish a New Industrial Cluster

- NITE* has built the world's largest testing and evaluation facility.
- In preparation for the commencement of testing services beginning summer 2016, Osaka Prefecture, working with NITE and the national government, continues to work to improve the function and encouraging the use of those facilities.
- We are aiming to establish a system that provides necessary services for battery business entry in a one-stop location here in Osaka.

*The National Institute of Technology and Evaluation

Battery Strategy

Looking to strengthen the international industry, we support new business creation for storage batteries, fuel cells and solar

- Location: 25F Osaka Prefectural Government Sakishima Building 1-14-16 Nanko kita, Suminoe-ku, Osaka.



Head Researcher
Yasuhiko Bito

[Field: storage batteries, materials]

Pease fe
conta

NLAB
(National LABoratory for advanced energy storage technologies)



Source: provided by NITE

Verification Projects using Reusable EV Batteries (Yumeshima Area)

Application example of National Special Zone System

- Since March 2014, we have implemented a project to demonstrate the capabilities of a highly-economical large-scale power storage system constructed by connecting large quantities of discarded used batteries collected from electric vehicles (EV).
- This project can contribute to a low-carbon society in two ways: by promoting EV use and expanding renewable energy.
- Now, we aim to develop an inexpensive power storage system using this technology and create a new energy management business that can provide stable power service by utilizing storage batteries.



Demonstration 1

Suppression function to control photovoltaic (PV) output fluctuations on the demand side.

Cooperation of various demand side energy management systems. (peak cut, backup)

Demonstration 2

Application of the Feed in Tariff (FIT) solar system in an emergency.

Applying part of FIT solar system which stops in an emergency to supply power to battery.

Storage Battery Projects are on the Move in the Yumeshima / Sakishima Areas of the Special Zone!



Osaka is the best place for storage battery business and demonstration!

Research Center

competitiveness of the Kansai battery and coordinate demonstration projects cells.

●Contact: Tel. +81-6-6210-9269
Fax. +81-6-6210-9481

Feel free to contact us



Expert
Noboru Hashimoto
[Field: fuel cells, materials]

We support businesses in the hydrogen and fuel cell fields!



Main Initiatives in the New Energy Field 2

Kansai International Airport (KIX) Hydrogen Grid Project (Kansai International Airport Area)

- Currently, the first demonstration project of the fuel cell-powered forklift / hydrogen supply infrastructure as an Asian airport is being operated.
- Taking advantage of fuel cell forklifts' characteristics, we can increase operating efficiency, reduce CO₂ emissions and improve working conditions.
- With the first hydrogen station, KIX becomes the first airport in Japan to supply hydrogen to fuel cell vehicles.



Hydrogen refueling for fuel cell forklifts



Iwatani Hydrogen Station in Kansai International Airport
(Open in January 2016)

Introducing the Nation's Largest Fuel Cell in Osaka

- In Osaka Wholesale Market, a private enterprise installed the nation's first 1 MW level fuel cell system for commercial use, and is currently verifying its CO₂ reduction, as well as stability and reliability of its power supply.
- The Market purchases generated power and utilizes as emergency power supply.



Fuel cell system of 1.2 megawatt solid oxide fuel cell(or SOFC)
The service started in March 2015



Osaka Wholesale Market

Additionally, we are also working on how to verify new hydrogen-related technologies.

Leading-edge Environment for Medical and Health Fields in Osaka!



Main Initiatives in the Life Sciences

Forming a Bio Medical Cluster

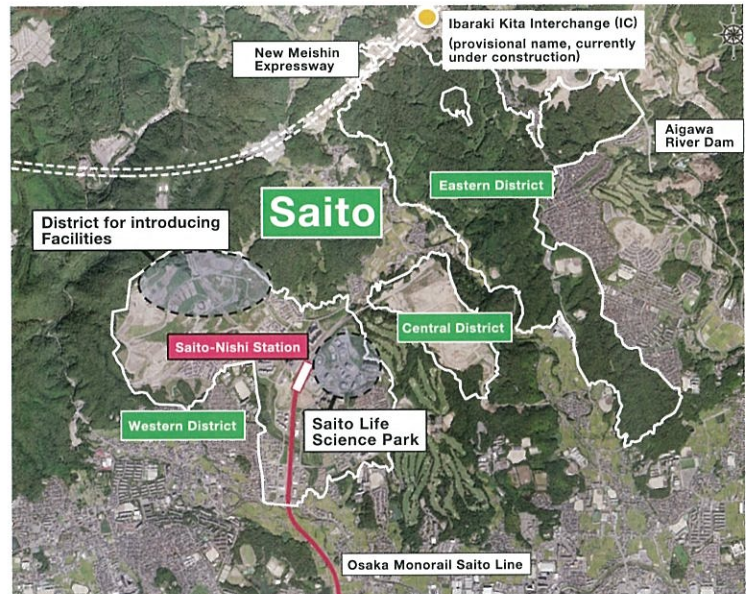
Saito

- **Saito Life Science Park**

17 facilities including the National Institute of Biomedical Innovation, Health and Nutrition (NIBIOHN) and life science related enterprises are located.

Incubation facilities for bio-ventures (in three buildings)

- Other than business sites in the Western District and the Central District of the Life Science park, we aim to integrate life science enterprises and more.



Northern Osaka Health and Biomedical Innovation Town (NohBIT) nicknamed 'KENTO'

- Taking advantage of the National Cerebral and Cardiovascular Center's location change, NohBIT continues to add diverse functionality based on its theme of "health and medical."

- JR Kishibe Station, located near to NohBIT, offers the height of convenience 12 minutes from Osaka Station, 7 minutes from Shin Osaka Station.

- **KENTO Innovation Park:** We are looking to attract mainly research facilities for health or medical corporation.

- Please inquire about the incentives available.



北大阪健康医療都市

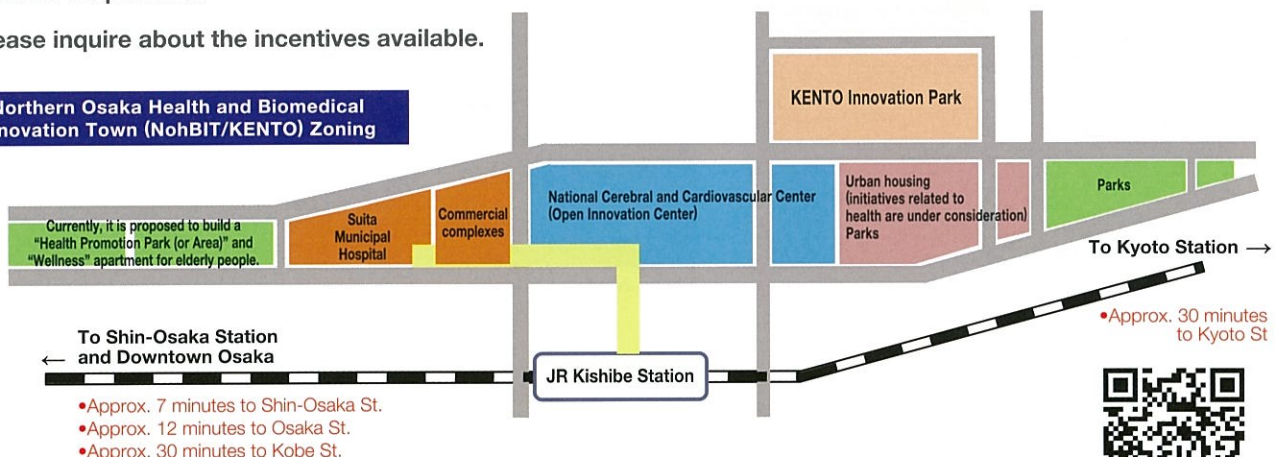
健都

Completion Image of the Station Area (2018)



KENTO Innovation Park
With a focus on health and medical care, aiming to provide a site for integration of research facilities, including enterprises, for cutting-edge research and development

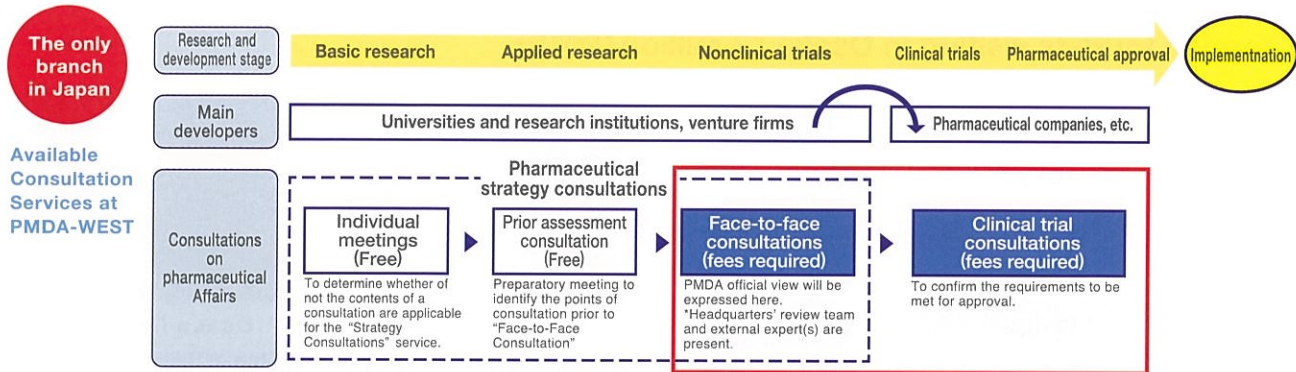
Northern Osaka Health and Biomedical Innovation Town (NohBIT/KENTO) Zoning



Check here for information on NohBIT.→

The Pharmaceuticals and Medical Devices Agency – Kansai Branch (PMDA-WEST) is expanding its functions!

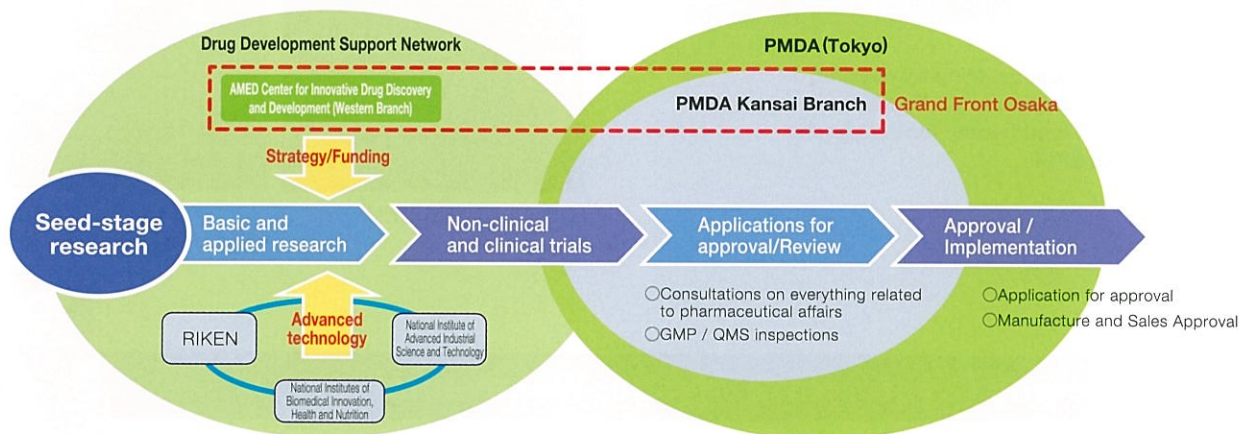
● Since 2016, the Kansai branch is able to handle all consultations regarding pharmaceutical affairs.



TV conference system enables consultations with Tokyo Headquarters

Cooperation between the Drug Development Support Network and PMDA-WEST provides seamless support for the medical and other related fields to grow.

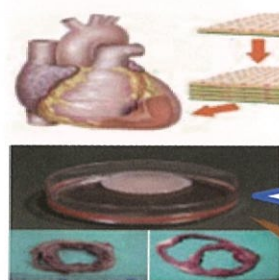
*The Drug Development Support Network: The nation-wide support system for drug discovery and development, headquartered within the Japan Agency for Medical Research and Development (AMED)



Osaka's Seminal Initiatives!

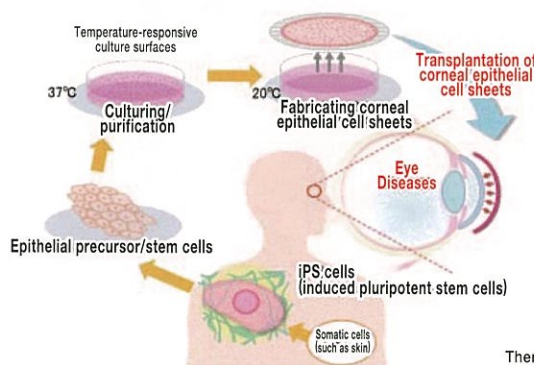
● Leading the world iPS cell research

Myocardial regeneration therapy using iPS cells



Osaka University Graduate School Professor, Graduate School of Medicine
Yoshiaki Sawa

Autologous corneal epithelium regeneration therapy using human iPS cells



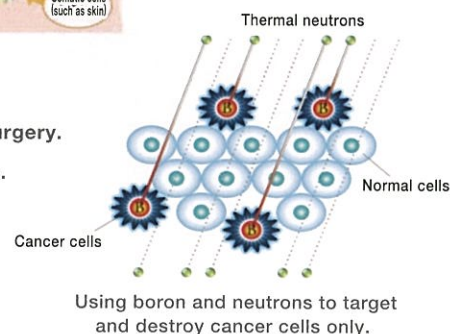
Osaka University Graduate School Professor, Graduate School of Medicine
Kohji Nishida

● Promoting BNCT* implementation

(World's first clinical trials started in Osaka in October, 2012)

- Effective for intractable cancers (e.g. malignant brain tumors, head and neck cancers) which are difficult to treat with present radiation therapy and surgery.
- Aiming for commercialization and expanding globally as a revolutionary medical system. (composed of PET scans, boron medicines, accelerators, expert personnel)
- Currently preparing for establishment of Kansai BNCT Medical Research Center (provisional name) as part of Osaka Medical College.

*BNCT stands for "Boron Neutron Capture Therapy."
A cutting-edge cancer therapy for selectively destroying cancer cells.



Sightseeing (Osaka)



- One of three foreign tourists visit Osaka
- Foreign tourists visiting in Osaka : 7 million (2015)

Ranking	City	Visiting Rate(%)
1	Tokyo	48.5
2	Osaka	34.1
3	Kyoto	27.9
4	Chiba	13.4
5	Kanagawa	11.8
6	Fukuoka	11.3
7	Hokkaido	10.7
8	Aichi	9.1
9	Hyogo	6.9
10	Nara	6.4

[Source]
Japan Tourism Agency, Ministry of Land,
Infrastructure, Transport and Tourism
Consumption Trend Survey for Foreigners
Visiting Japan 2014



Tsutenkaku Tower



Osaka Castle



Osaka Aquarium Kaiyukan



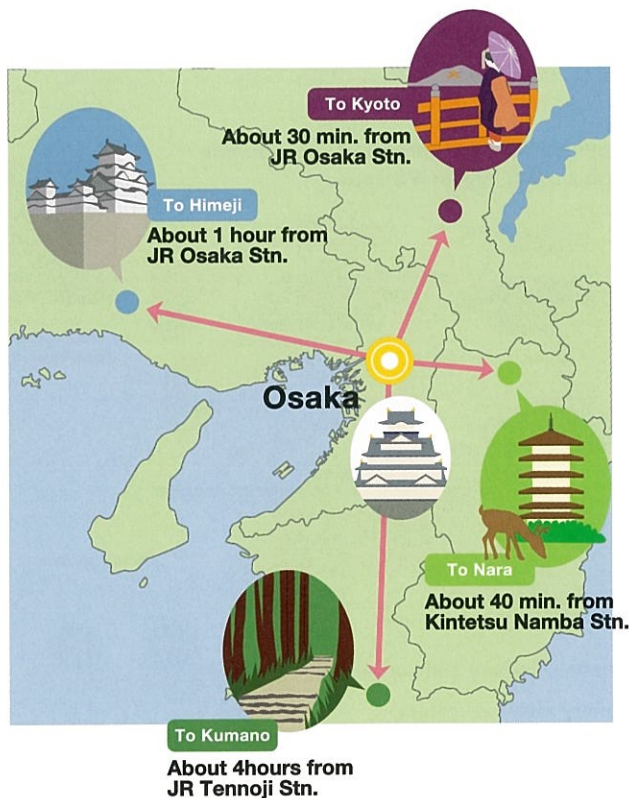
Abeno Harukas
(Abenobashi Terminal Building)



Dotonbori



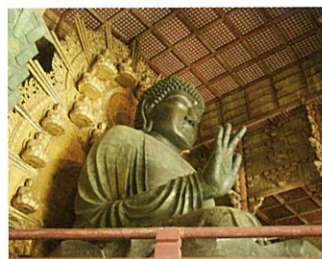
Sightseeing (Kyoto, Nara, Hyogo, Wakayama)



Himeji Castle
(Hyogo)



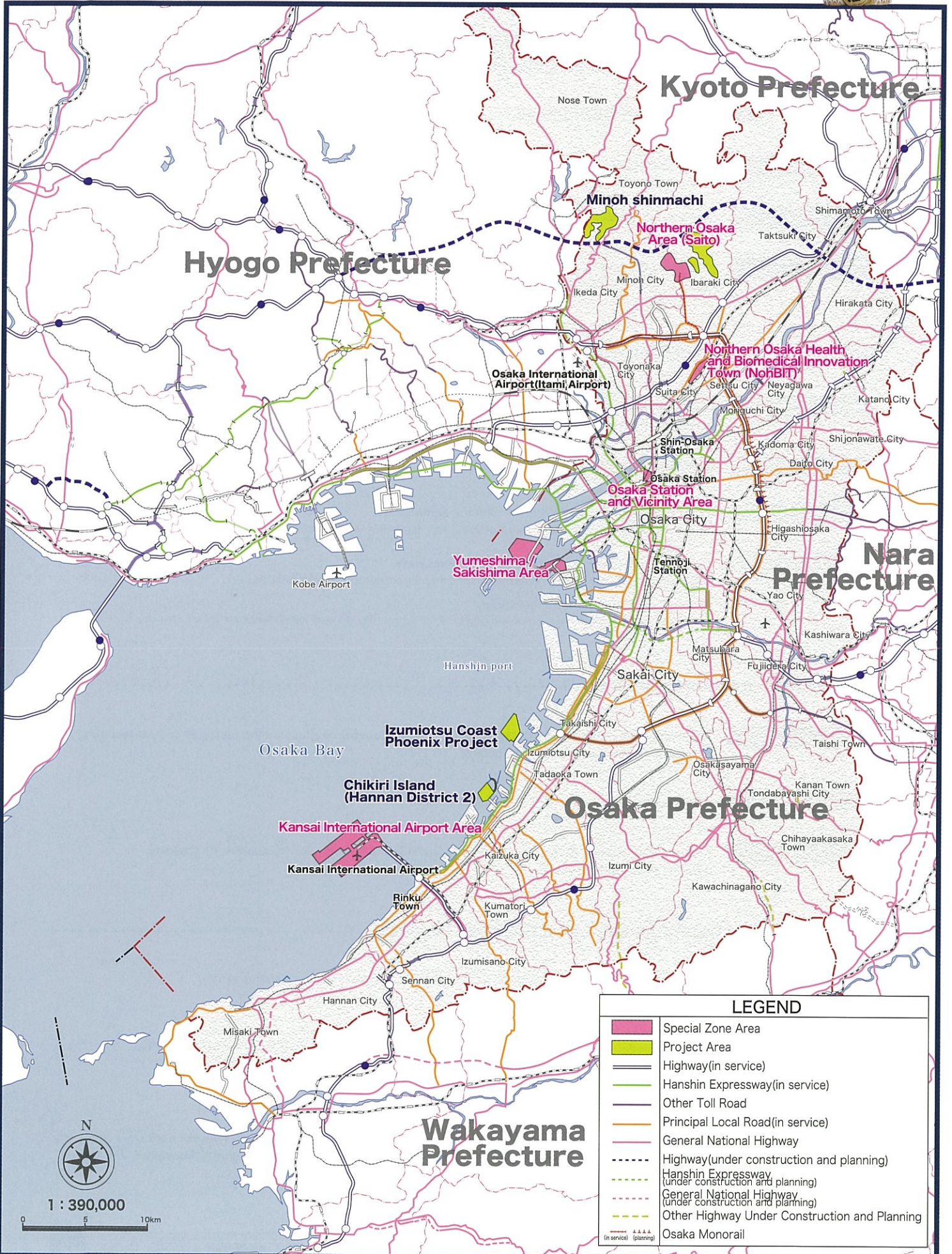
Kinkakuji Temple
(Kyoto)



Nara Great Buddha
(Nara)



Mt. Koya
(Wakayama)



And there's more!! A Complete Support System!



Incentives to Support Business

Subsidy for Foreign-Affiliated Companies

Eligible Recipients Foreign-affiliated companies moving into Osaka to set up a head office or Asian base of operation.

Eligibility Office space of 250m² or greater and 25 or more regular employees

Subsidy Rate / Limit [Acquisition] 5% of costs related to building and machine equipment (Limited to 100 million yen)
[Lease] 1/3 of rent (for 24 months - limited to 60 million yen)

Subsidy for Investment Promotion

Eligible Recipients Small and medium enterprises (SMEs) that are newly constructing / expanding their factories or R&D facilities.

Subsidy Requirement Over 100 million yen of investment, etc.

Subsidy Rate / Limit 5% of cost related to building and machine equipment
(10% for companies that have head offices, etc. in Osaka Prefecture) (Limit is 30 million yen)

Eligible Regions Zones promoting the formation of industrial clusters,
and municipalities that have plans of promoting investment in R&D facilities.

*After receiving approval for the subsidy above,
the recipient may be eligible for a corporate enterprise tax subsidy (limited to 20 million yen) if certain requirements have been met.

Tax Incentive for Industrial Cluster

Eligible Recipients Small and medium enterprises (SMEs) that are newly constructing/expanding factories or R&D facilities,
or have acquired land for such purposes.

Eligible Regions Zones promoting formation of industrial clusters

Special Measures Include Reduction amounting to half of real estate acquisition tax owed upon acquisition of property.
(Limited to 200 million yen.)

Tax Incentive for Strengthening Local Business Facilities

Eligible Recipients Companies moving/expanding a HQ office (office, research institute, training center)

Conditions for Approval The enterprise is newly constructing/expanding HQ function, leasing, or modifying the
use of its buildings and preparing facilities in a region listed in the Regional Revitalization Plan.
The enterprise is adding 10 or more employees to their HQ. (5 employees for SMEs)

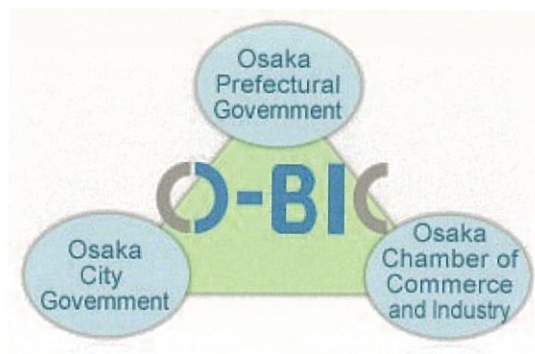
Special Measures Application of either a special refund or a tax exemption for corporate taxes etc.
in regards to the acquired building asset.
Application of tax exemption for corporate taxes etc. in regards to employees newly hired for work in the HQ.
Loan guarantee from the Organization for Small & Medium Enterprises and Regional Innovation, JAPAN.





O-BIC(Osaka Business and Investment Center)

A detailed support system
that targets your specific needs.



Examples of the Wide Range of Services

- General information on Osaka in English, Chinese, Korean, and Japanese
- Real estate information regarding office space, locations for warehouses and plants, and residential properties
- Advice on application procedures for company registration and status of residence
- Information regarding incentives measures provided by local governments etc., and coordination with related organizations and agencies
- Introductions to interpreters, translators, market researchers, attorneys, general and tax accountants, and other professionals
- Assistance in meeting potential business partners through websites, meetings, and seminars

Support Program for Foreign Companies

- Subsidy for registration cost of the establishing a new head office or branch: up to 100,000 yen per applicant
- Subsidy for cost of obtaining status of residence: up to 50,000 yen per applicant

TEL : +81-6-6944-6298

Email : o-bic@osaka.cci.or.jp

URL : <http://o-bic.net/>

Temporary Office Space

IBPC Osaka Investment Promotion Project and JETRO Osaka have set up free temporary office spaces for foreign companies considering investment in Osaka.

IBPC (International Business Promotion Center) Osaka Investment Promotion Project

TEL : +81-6-6615-7130 / Email : info@ibpcosaka.or.jp / URL : <http://www.investosaka.jp/en/>

JETRO Osaka

TEL : +81-6-4705-8660 / Email : ibscosaka@jetro.go.jp / URL : <http://www.jetro.go.jp/en/invest>



< Contact Information >

**Investment and Growth Support Division Growth Industry Promotion Office,
Osaka Prefectural Government Department of Commerce, Industry and Labor**

25F Osaka Prefectural Government Sakishima Building 1-14-16 Nanko kita, Suminoe-ku, Osaka 559-8555
Tel.+81-6-6210-9406 · +81-6-6210-9482 / Fax.+81-6-6210-9296 / Email ritchiseicho@sbox.pref.osaka.lg.jp

A must-read guidance, Osaka 

Check us out on Facebook too.

[Growth Industry Promotion Office, Osaka, facebook](#) 

Accessible by smartphone or PC.