

N.E. Bridge Contractors Inc.

WWW.BRIDGERIGGERS.COM

*Specialized Equipment Rentals for Bridge Inspections, Repairs,
and All Under Bridge Accessing*

1-800-548-3408



Equipment Catalog

www.bridgeriggers.com

N.E. Bridge Contractors
2 Lopes Drive
Norton, MA 02766

Phone: 1-800-548-3408
Phone: 508-238-1941
Fax: 508-238-2093

N.E. Bridge Contractors specializes in road and railroad bridge accessing equipment including: Under Bridge Inspection Snoopers, Sectional Barges, Man Lifts, Bucket Trucks, and Bridge Rigging. We also provide Marine Construction and Marine Repair Services including: commercial diving, underwater video, underwater welding, scour and fender repairs, and sub-cable replacement. Our equipment can help you safely inspect, repair, and access every part of any bridge. We provide Hi-Rail Under Bridge Trucks, Hi-Rail Man Lifts, and Hi-Rail Bucket Trucks for use on Class I Railroads and Shortline Railroads.

Under bridge Inspection Units are designed for completing all types of bridge inspection and maintenance work. You can easily access both roadway and railroad bridges with the large two-person basket. Whether you need to work above, below, or alongside the bridge, our under bridge machines safely maneuver you closer to the bridge structure and allow you to work hands on, getting work done more efficiently and more effectively.

We offer daily, weekly, and monthly rates which include a driver, fuel, and all machine maintenance. Our fleet consists of well-maintained, late model units, and our drivers are experienced, licensed, friendly, and will bring the equipment right to your jobsite on time. We have one of the largest fleets of under bridge units in the country and we can accommodate your short term or long term job. N.E. Bridge can provide rental equipment to all 50 states as well as to Canada.

– John Waitkus and Lauri Waitkus, Owners

TABLE OF CONTENTS

SECTION 1- ROADWAY UNDER BRIDGE UNITS 4

A-30 Under Bridge Unit

I-40 "Snooper"

UB-50 Under Bridge Unit

UB-60 Under Bridge Unit

A-62 Under Bridge Unit

A-75 Under Bridge Unit

SECTION 2- HI-RAIL SERVICES 10

Hi-Rail Gear Installations

A-30 Hi-Rail Under Bridge Unit

SECTION 3- OVERHEAD SPECIALTY ACCESSING 12

Road-to-Rail Elliott 60' Truck-Mounted Man Lift

Road-to-Rail Bucket Trucks

SECTION 4- BRIDGE RIGGING 13

Swing Low Staging

Spider Chair

Bridge Inspection Repair Device (B.I.R.D)

SECTION 5- TRAFFIC MANAGEMENT 14

SECTION 6- COMMERCIAL DIVING 15

1 ROADWAY MACHINES

Under Bridge Inspection Units are designed for completing all types of bridge inspection and maintenance work. You can easily access any type of bridge with the large two-person basket. Whether you need to work above, below, or alongside the bridge, our under bridge machines safely maneuver you closer to the bridge structure and allow you to work hands on, getting work done more efficiently and more effectively.

A-30 UNDER-BRIDGE UNIT

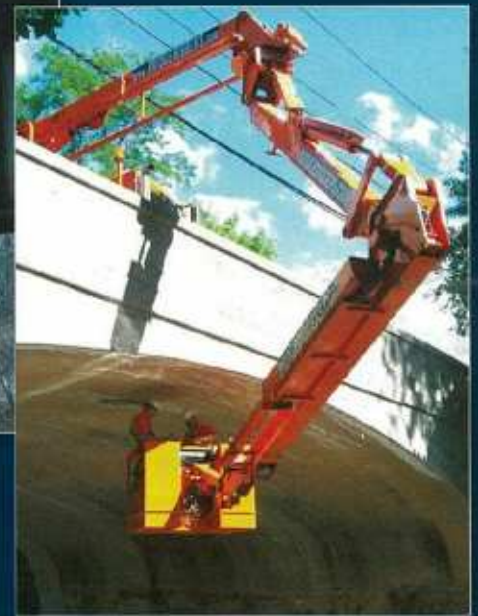
The A-30 is the smallest of our under bridge machines with a 30'11" maximum horizontal reach. The A-30 has overhead reach capabilities and is Hi-Rail capable. The A-30 enables you to work above, below, or alongside the bridge span.

Specifications:

- Horizontal Under Bridge Reach: 30' 11"
- Vertical Reach Down: 40'
- Overhead Vertical Reach Up: 30' 3"
- Fence Clearance: 10'
- Sidewalk Clearance: 9'
- Rotation Range of Turret 1: 270 Degrees
- Rotation Range of Turret 2: 180 Degrees
- Deploys on Both Sides
- Registered Weight: 55,000 lbs (27.5 Tons)
- Front axle to Rear axle spacing: 19'8"
- Space required on bridge: 8'
- Total body length: 33'
- Total Body height: 11'

Features:

- 600 lb Bucket Capacity
- Two person basket size: 40" x 60" x 42"
- Heated Bucket
- Inspection Lights
- Axle Locks
- No Outriggers or External Stabilizers
- Hi-Rail capable



I-40 "SNOOPER"

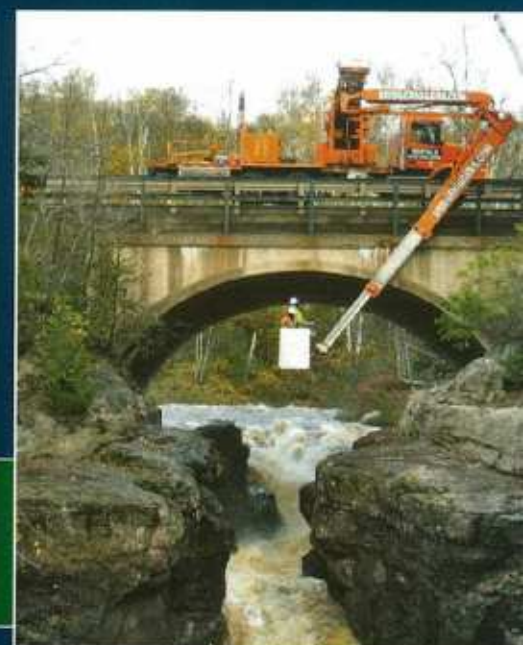
The I-40 "Snooper" is a medium-sized under bridge machine with a 41' maximum horizontal reach and 50' vertical reach down. This machine enables you to work below or alongside the bridge deck.

Specifications:

- No Overhead Reach
- Horizontal Under Bridge Reach: 40' 11"
- Vertical Reach Down: 50'
- Fence Clearance: 6'
- Sidewalk Clearance: 9'
- Total Length: 35'8"
- Deploys from One Side
- Three extendable Booms
- Registered Weight: 53,000 lbs.
- Front Axle to Rear Axle Spacing: 19'3"
- Machine Width: 8'

Features:

- No Outriggers or External Stabilizers
- Inspection Lights
- Two Person Basket: 42" x 20" x 54"
- Two sets of controls: one set in the basket and one set at the pedestal
- Slope indicator alarm



UB-50 UNDER BRIDGE UNIT

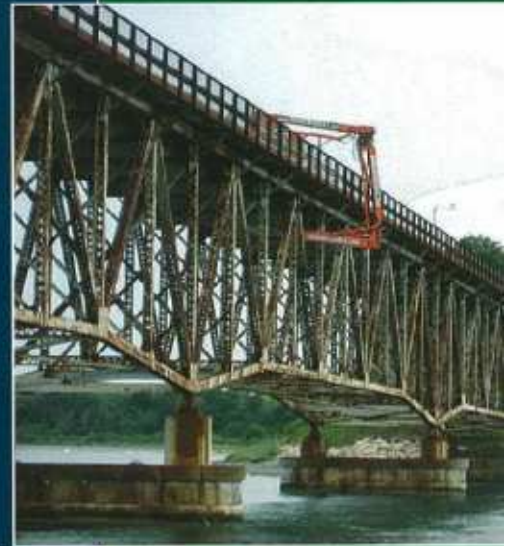
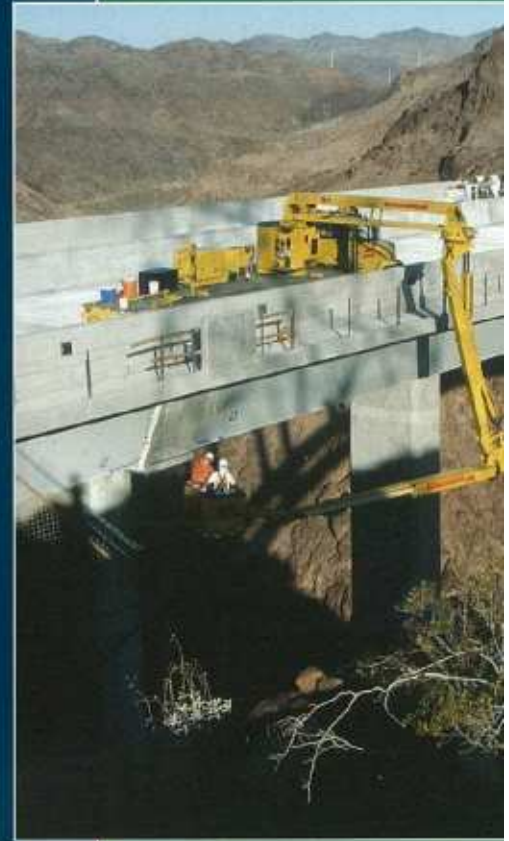
Our UB-50 is a medium-sized under bridge machine with a 51'9" maximum horizontal reach. This machine enables you to work above, below, or alongside the bridge span.

Specifications:

- Horizontal Under Bridge Reach: 51'9"
- Vertical Reach Down: 63'
- Optional 4th Telescoping boom: 14'
- Overhead Vertical Reach Up: 38'
- Fence Clearance: 10'
- Sidewalk Clearance: 12'6"
- Rotation Range of Turret 1: 270 degrees
- Rotation Range of Turret 2: 180 degrees
- Deploys on One Sides
- Registered Weight: 66,000 lbs (33 Tons)
- Front axle to Rear axle spacing: 28'9"
- Total Length: 38'
- Total Height: 13'3"

Features:

- 600 lbs Bucket Capacity
- Heated Bucket Platform
- Inspection Lights
- Axle Locks
- No Outriggers or External Stabilizers
- Basket Size (Two Person Basket): 40" x 60" x 42"
- Three sets of controls: one set in the platform, one remote set, one set at the pedestal
- Sloped indicator alarm



UB-60 UNDER BRIDGE UNIT

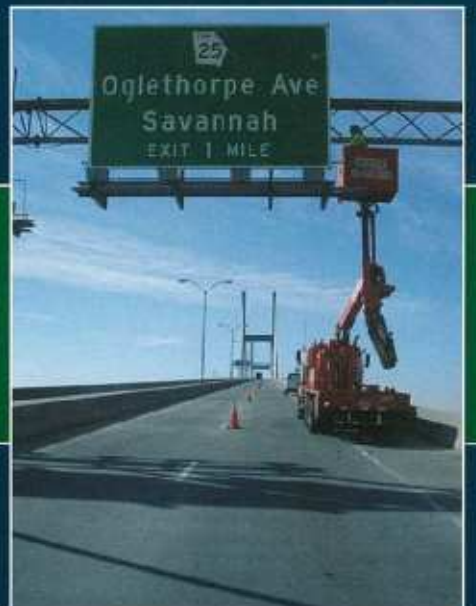
Our UB-60 is a medium-sized under bridge machine with a 60'6" maximum horizontal reach. This machine enables you to work above, below, or alongside the bridge span.

Specifications:

- Horizontal Under Bridge Reach: 60'6"
- Vertical Reach Down: 70'
- Overhead Vertical Reach Up: 47'3"
- Fence Clearance: 10'
- Sidewalk Clearance: 12'6"
- Rotation Range of Turret 1: 270 degrees
- Rotation Range of Turret 2: 180 degrees
- Deploys on One Sides
- Registered Weight: 65,000 (32.5 Tons)
- Front axle to Rear axle spacing: 28'10"
- Total Length: 40'4"
- Total Height: 12'10"

Features:

- 600 lbs Bucket Capacity
- Heated Bucket Platform
- Inspection Lights
- Axle Locks
- No Outriggers or External Stabilizers
- Basket Size (Two Person Basket): 40" x 60" x 42"
- Three sets of controls: one set in the platform, one remote set, one set at the pedestal
- Sloped indicator alarm



A-62 UNDER BRIDGE UNIT

Our A-62 is one of our larger under bridge machines with a 61'9" maximum horizontal reach. The A-62 provides 13' of vertical reach through the use of its telescopic 4th boom section and 180 degree rotating basket. This feature is perfect for truss bridges, and will enable you to perform a close-up inspection in between your deepest girders and beams under the bridge deck.

Specifications:

- Horizontal Under Bridge Reach: 61'9"
- Vertical Reach Down: 67'7"
- 4th Telescoping boom: 13'
- 180 Degree Rotating Basket
- Overhead Vertical Reach Up: 51'6"
- Fence Clearance: 11'
- Sidewalk Clearance: 13'
- Rotation Range of Turret 1: 270 degrees
- Rotation Range of Turret 2: 180 degrees
- Deploys on Both Sides
- Registered Weight: 72,000 lbs (36 Tons)
- Front axle to Rear axle spacing: 24'9"
- Total Length: 40'5"
- Total Height: 13'

Features:

- 600 lbs Bucket Capacity
- Heated Bucket Platform
- Inspection Lights
- Axle Locks
- No Outriggers or External Stabilizers
- Basket Size (Two Person Basket): 40" x 60" x 42"
- Three sets of controls: one set in the platform, one remote set, one set at the pedestal.
- Sloped Indicator alarm



A-75 UNDER BRIDGE UNIT

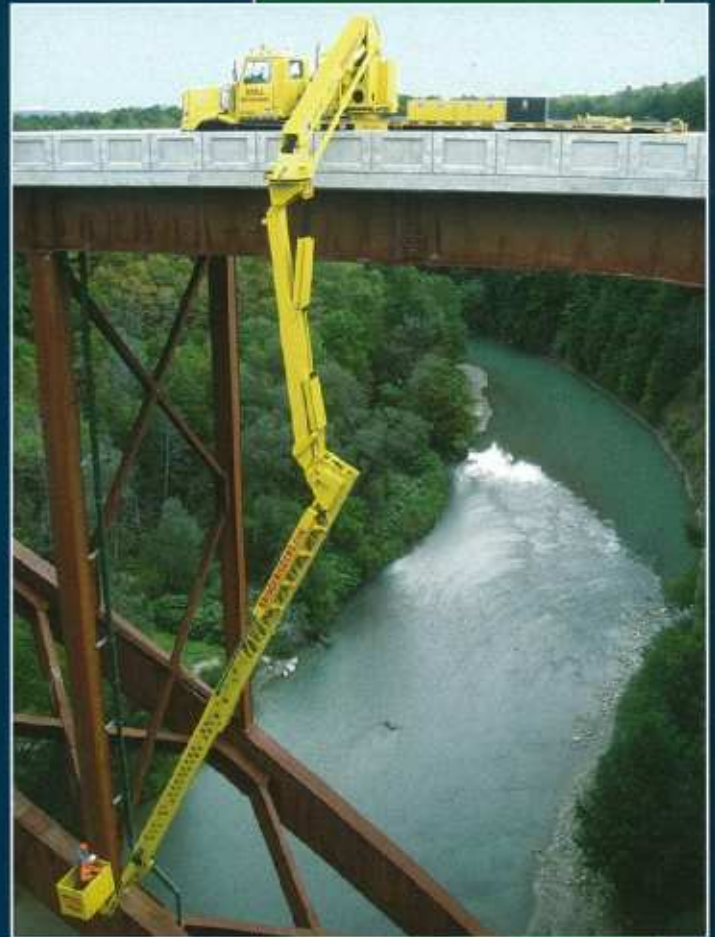
Our A-75 is the largest of under bridge machines with a 75' maximum horizontal reach. The A-75 also provides 16' of vertical reach through the use of its telescopic 4th boom section. This feature enables you to do a close-up inspection in between your deepest girders and beams under the bridge deck.

Specifications:

- Horizontal Under Bridge Reach: 75'
- Vertical Reach Down: 72'
- 4th Telescoping boom: 16'
- Overhead Vertical Reach Up: 53'
- Fence Clearance: 10'
- Sidewalk Clearance: 12'6"
- Rotation Range of Turret 1: 270 degrees
- Rotation Range of Turret 2: 180 degrees
- Deploys on Both Sides
- Registered Weight: 79,000 lbs (39.5 Tons)
- Front axle to Rear axle spacing: 35'7"
- Total Length: 43'
- Total Height: 13'

Features:

- 600 lbs Bucket Capacity
- Heated Bucket Platform
- Inspection Lights
- Axle Locks
- No Outriggers or External Stabilizers
- Basket Size (Two Person Basket): 40" x 60" x 42"
- Three sets of controls: one set in the platform, one remote set, one set at the pedestal.
- Sloped Indicator alarm

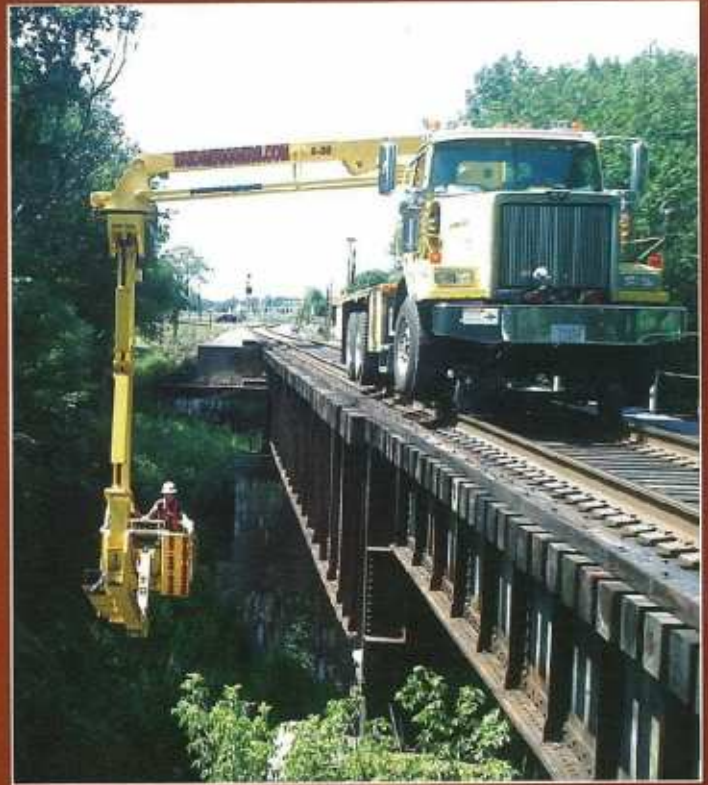


2. HI-RAIL SERVICES

Our Hi-Rail Under Bridge Inspection Unit, or "Snooper", easily maneuvers from road to rail, allowing you access to both railroad bridges and road bridges with the same machine.

Our Hi-Rail truck mounted man lifts and Hi-Rail Bucket trucks can be used for inspections, repairs, maintenance, or any job requiring access to upper trusses above rail.

N.E. Bridge Contractors can perform full Hi-Rail Gear Installations on almost any vehicle. Road-to-Rail capable vehicles allow easy access to any location with railroad tracks.



HI-RAIL GEAR INSTALLATIONS

N.E. Bridge Contractors can perform full Hi-Rail Gear Installations on almost any vehicle. Road-to-Rail capable vehicles allow easy access to any location with railroad tracks. Installing Hi-Rail gear on any vehicle creates a quick and safe transition between road and rail. The front guidewheel assembly attaches to the frame and front axle and lifts the front wheels off the track, thus utilizing the vehicle's front suspension. This design supports the vehicle as it was intended and helps the truck navigate curves smoothly and dampen out the effects of track irregularities. The rear assembly attaches directly to the truck frame behind the rear axle.

Please call 1-800-548-3408 for more information regarding Hi-Rail gear installations, or to schedule an installation for your vehicle.





A-30 HI-RAIL UNDER BRIDGE UNIT

The Aspen Aerial A-30 is considered a Hi-Rail UBIU (under bridge inspection unit), or "Snooper", and easily maneuvers from road to rail. Road-to-Rail capable vehicles allow easy access to any location with railroad tracks. Installing Hi-Rail gear on any vehicle creates a quick and safe transition between road and rail. The front guide wheel assembly attaches to the frame and front axle and lifts the front wheels off the track, thus utilizing the vehicle's front suspension. This design supports the vehicle as it was intended and helps the truck navigate curves smoothly and dampen out the effects of track irregularities. The rear assembly attaches directly to the truck frame behind the rear axle.

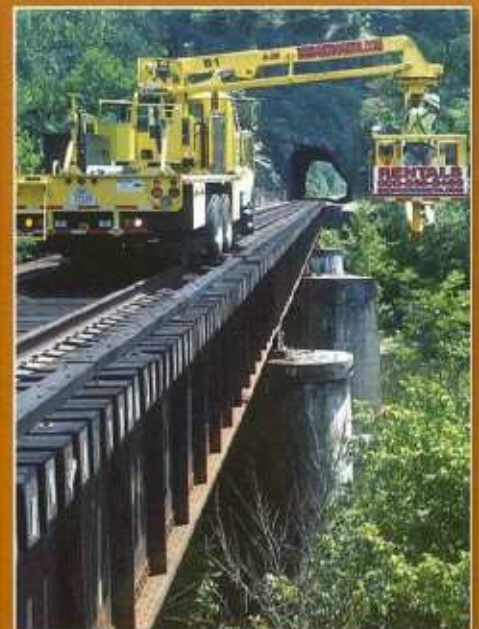


Specifications:

- Horizontal Under Bridge Reach: 30' 11"
- Vertical Reach Down: 40'
- Overhead Vertical Reach Up: 30' 3"
- Fence Clearance: 10' 3"
- Sidewalk Clearance: 9'
- Rotation Range of Turret 1: 270 Degrees
- Rotation Range of Turret 2: 180 Degrees
- Deploys on Both Sides
- 56 W" Gauge

Features:

- 600 lbs Bucket Capacity
- Heated Bucket
- Inspection Lights
- Axle Locks
- No Outriggers or External Stabilizers



3. OVERHEAD SPECIALTY ACCESSING

ROAD-TO-RAIL ELLIOTT 60' TRUCK-MOUNTED MAN LIFT

The Elliott L60 is a 60' Boom Truck, or Truck – Mounted Man Lift, that can be used on either road bridges or railroad bridges. It can be used for inspections, repairs, maintenance or any job requiring access to upper trusses.

As a road-to-rail capable vehicle, the Elliott allows easy access to any location with railroad tracks. Installing Hi-Rail gear on any vehicle creates a quick and safe transition between road and rail. The front guide wheel assembly attaches to the frame and front axle and lifts the front wheels off the track, thus utilizing the vehicle's front suspension. This design supports the vehicle as it was intended and helps the truck navigate curves smoothly and dampen out the effects of track irregularities. The rear assembly attaches directly to the truck frame behind the rear axle.

Specifications:

- Platform capacity is 500 lbs.
- Main Winch Capacity is 5900 lbs.
- 60' Vertical Reach
- Rail Mounting/Hi-Rail Capable
- 360 Degree Rotation
- 110 AC Power Outlet
- Stabilizer Outriggers



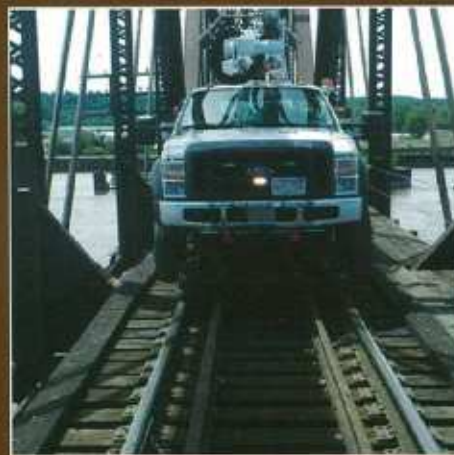
ROAD-TO-RAIL BUCKET TRUCKS

Our 45' bucket trucks are outfitted with an aerial work bucket that is raised and lowered using a hydraulic lift system, and can be used for overhead bridge and tunnel accessing as well as for work on signs, telephone poles, and utilities.

Our Hi-Rail capable bucket trucks are ideal for accessing upper trusses on roadway bridges. Road-to-Rail capable vehicles allow easy access to any location with railroad tracks.

Specifications:

- Overhead reach: 45'
- Stowed travel height: 10'
- Single Person Basket
- Hi-Rail Capabilities
- 360 Degree Range
- 110 Volt AC Power Outlets



4. BRIDGE RIGGING AND STAGING

SWING-LO STAGING

A Swing-Lo Staging set-up allows scaffolding to be attached to the side or bottom of the bridge, reaching downward as opposed to building scaffolding from the ground up. Swing-Lo Staging is particularly useful on bridges over non-navigable waterways with limited barge access, or on bridges with restricted weight, preventing use of an under bridge truck.



SPIDER CHAIRS

Spider Chairs, also known as Climbers or Boatswain's chairs, are mobile inspection platforms that climb steel cables and are capable of supporting one or two inspectors. They are ideal for inspecting high piers or suspension bridge hangers.

B.I.R.D. UNIT

Our Bridge Inspection Repair Device (B.I.R.D.) is ideal for accessing bridges with severe weight restrictions, such as covered bridges or historical bridges. This device is hydraulically-operated, consisting of two truss towers and one work platform and is mounted on a counter-weighted turntable, stored horizontally on a single-axle flatbed truck. When in use, the towers are unfolded and raised to a vertical position over the right side of the truck. The platform is suspended underneath and perpendicular to the bridge from the outboard tower.

- Weighs 4,500 lbs
- Capacity: 500 lbs
- Lowering depth: 16'
- Platform width: 44"
- Trailer Mounted
- Platform length: 19'



5. TRAFFIC MANAGEMENT

N.E. Bridge can provide traffic management along with your equipment rental. We can provide various types of traffic control and traffic protection including:

- Crash trucks with 65 mph Scorpion Truck-Mounted Attenuator
- Single and double lane closures
- Traffic patterns
- Portable Arrow boards
- Portable Message boards
- Flaggers, Road Signs, and Cones



6. COMMERCIAL DIVING

All N. E. Bridge divers are experienced and qualified with OSHA certifications. Our certified divers have a minimum of 10 years and up to 30 years experience. Our divers have state-of-the-art hot and cold temperature diving suits and equipment, allowing them to work in a wide range of elements and site conditions. Our dive teams are experts in pier repairs and construction, underwater welding, fender system installation, as well as underwater inspection and bridge repairs of any kind. For underwater inspections and repairs, N.E. Bridge can provide live underwater video and headset communication between the divers and the personnel above water.

Underwater Services Include:

- Video Recording
- Bridge Repairs
- Sub-cable Repairs & Replacements
- Utility Cable Repairs & Replacements
- Fender System Repairs
- Pile Jacketing
- Sheet Pile Installation
- Cofferdam Installation and Repairs
- Cutting and Welding
- Pier & Dock Repairs
- Underwater Lift Bags
- Pipeline Repair
- Scour Repairs
- Cathodic Repairs
- Cad Welding



