



# Progress of APFNet Funded Projects in Nepal



***First Council Meeting of APFNet***  
***27<sup>th</sup> April 2015***  
***Nya Pyi Taw, MYANMAR***

**Bishwa Nath Oli**  
*Ministry of Forests and Soil Conservation*  
*Email: bn\_oli@yahoo.com*



# Outline



- Background
- Project 1
- Project 2
- Project 3

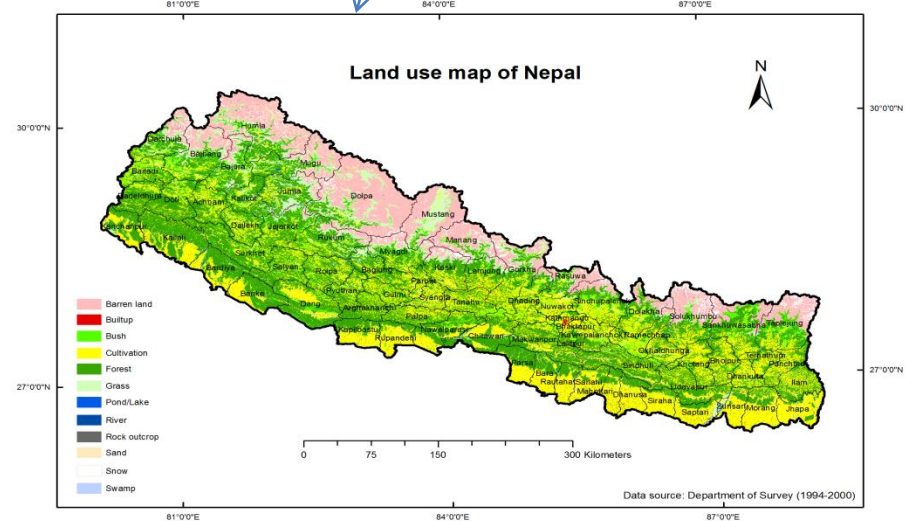
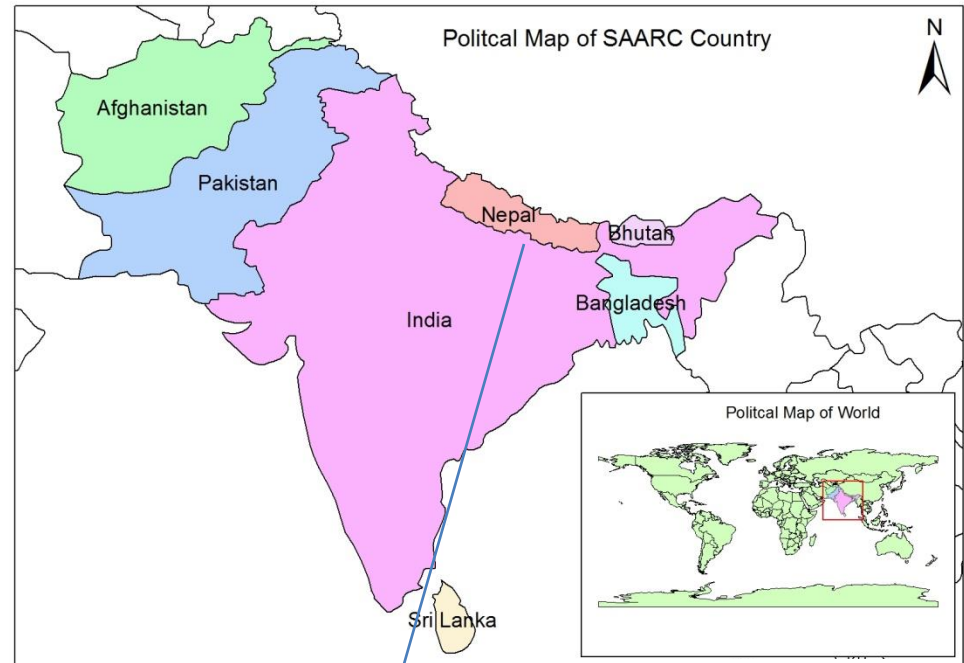




# Background



- Area – 147,181 Square Kilometre
- Population – 26.5 Million (2011 census)
- Annual population growth rate – 1.35%
- Ethnicity – 125 ethnic groups
- Per capita Income – 452 US\$
- GDP growth – 4.8%
- Poverty – 25%
- Human Dev. Index – 0.553 (144<sup>th</sup>)
- Forests- 5.8 million ha (39.6%)
- Forests under community mgmt- 33%
- Protected Areas coverage- 23.2%





# Project Description

SN	Project Name	Duration	Executing Agencies	Amount (US \$)
1	Demonstration of Sustainable Forest Management with Community Participation in Nepal	Sept 2010 - Aug 2012	FECOFUN	500,479 (Completed)
2	Supporting to Develop New Forest Sector Policy and Strategy through Consultation with Civil Society Organizations and Local Communities in Nepal	May 2013- May 2014	FECOFUN	100,000 (Completed)
3	Supporting Community Based Sustainable Forest Management and Economic Empowerment of Women in Central Region of Nepal	Oct 2014 - Sept 2017	HIMAEAN TI ASHMITA NEPAL CRMC	412,238 (Ongoing)



# Project 1: Demonstration of SFM with Community Participation in Nepal

**Goal :** To promote participatory forest management to improve the livelihood of forest dependent poor people.

## Objectives:

- To develop and implement the criteria and indicators of sustainable forest management and good governance in community forestry.
- To improve the livelihood of forest dependent poor people through community forest base enterprise and green jobs.
- To document the best practices from the piloting and dissemination to influences the policy to support the sustainable forest management and promotion of community forest enterprises.
- To develop the human resources to support the sustainable forest management, livelihood improvement, community based forest enterprises and green jobs.



# Project 1 Working Sites



**Working Sites:** 104 CFUGs in 21 Districts of Nepal





# Project 1 Progress



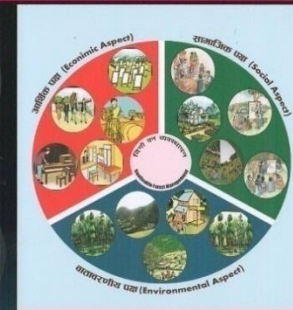
## Sustainable Forest Management

- Total Community Forest area intervened- 28,622 ha, 104 CFUGs
- Intensive SFM intervention CF area – 673.21 ha in 6 CFUGs
- Community level SFM Principles, Criteria and Indicator monitoring format developed
- Forest Operational Plan revision of 104 CFUGs



28/07/2012 05:45

सामुदायिक वनको दिगो व्यवस्थापन  
सिद्धान्त, आधार तथा सुचक  
अभ्यास तथा मापन पुस्तिका  
(समुदाय स्तरको लागि)



प्रकाशक : समुदायमा आधारित दिगो वन व्यवस्थापन परियोजना  
सामुदायिक वन उपभोक्ता महासंघ नेपाल  
काठमाडौं, नेपाल





# Project 1 Progress



## Green Enterprise development

- 10 CF enterprise established with seed grant support of US \$ 30,000
- US \$ 100 share per person for 280 poor people e.g. US \$ 1000 benefit distributed to poor in Community Sawmil in Dolakha
- Green employment generation  
– direct 106, indirect 4311 (total 4417)
- Developed cluster approach in enterprise establishment







# Project 1 Progress



## Forest governance

- Strengthened democratic practice in 104 CFUGs through PGA, PHPA and regular meetings
- Developed women and marginalized peoples' leadership e.g. Hariyali CFUG, Hansposa CFUG, Bhaktapur, Thuli CFUG





# Project 1 Progress



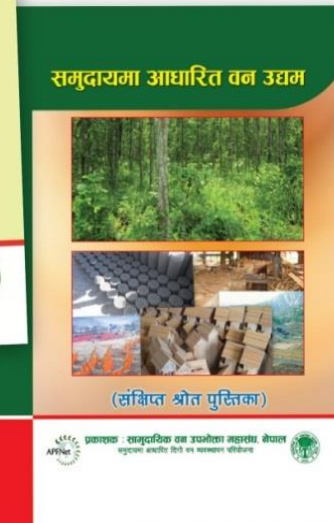
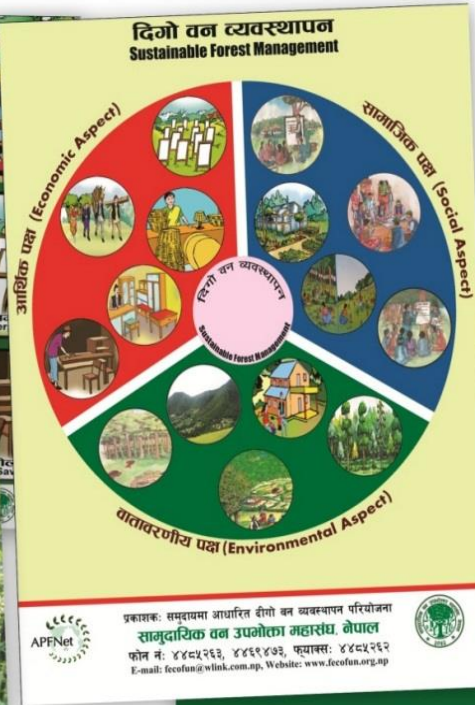
## Human Resource Development

- 37 Trained local resource persons developed who contributed in FOP preparation, Business plan preparation and other project activities
- 9716 males and 5735 females have participated





# Project 1-Publications





## Project 2:



# Supporting to Develop New Forest Sector Policy and Strategy through Consultation with CSOs and Local Communities in Nepal

## Goal

Provide policy recommendations to MoFSC and National Planning Commission with civil society perspective through the wider mobilization and consultations among policy makers, social and technical experts, civil society organizations, community organizations and federations.

## Objectives

- Review existing forest policies specifically Master Plan for Forestry Sector (MPFS), international agreements and forestry sub sector plans of National Planning Commission and other ministries.
- Develop common understanding among wider stakeholders and incorporate their views to support in developing participatory forestry sector strategy.
- Enhance understanding of contemporary forestry development for key representatives from CSOs, Ministry of Forest and Soil Conservation and local communities.
- To support in process of integrating suggestions and feedbacks in formation of forest sector policies and strategies.



# Project 2 Progress



- **Documented gaps in the existing forestry policies of Nepal focusing on international forestry development and sustainable forest management**
- **Prepared set of key thematic areas and points needed to be incorporated in the new forestry sector strategy**
- **Report submitted to Ministry of Forest and Soil Conservation.**
- **An Observation tour of five members to China (Kunming City), Yunnan Province**



# Project 2 Progress



**Feedbacks and suggestions of wider stakeholder regarding new forestry sector strategy reached to respective stakeholders for action**



**Press conference organized after submitting the policy suggestion report to MoFSC**



**FECOFUN Chairperson submitting the policy suggestion report to Secretary of MoFSC/GoN**



## Project 3



# Supporting Community-based SFM and Economic Empowerment of Women in Central Region of Nepal

## Goal

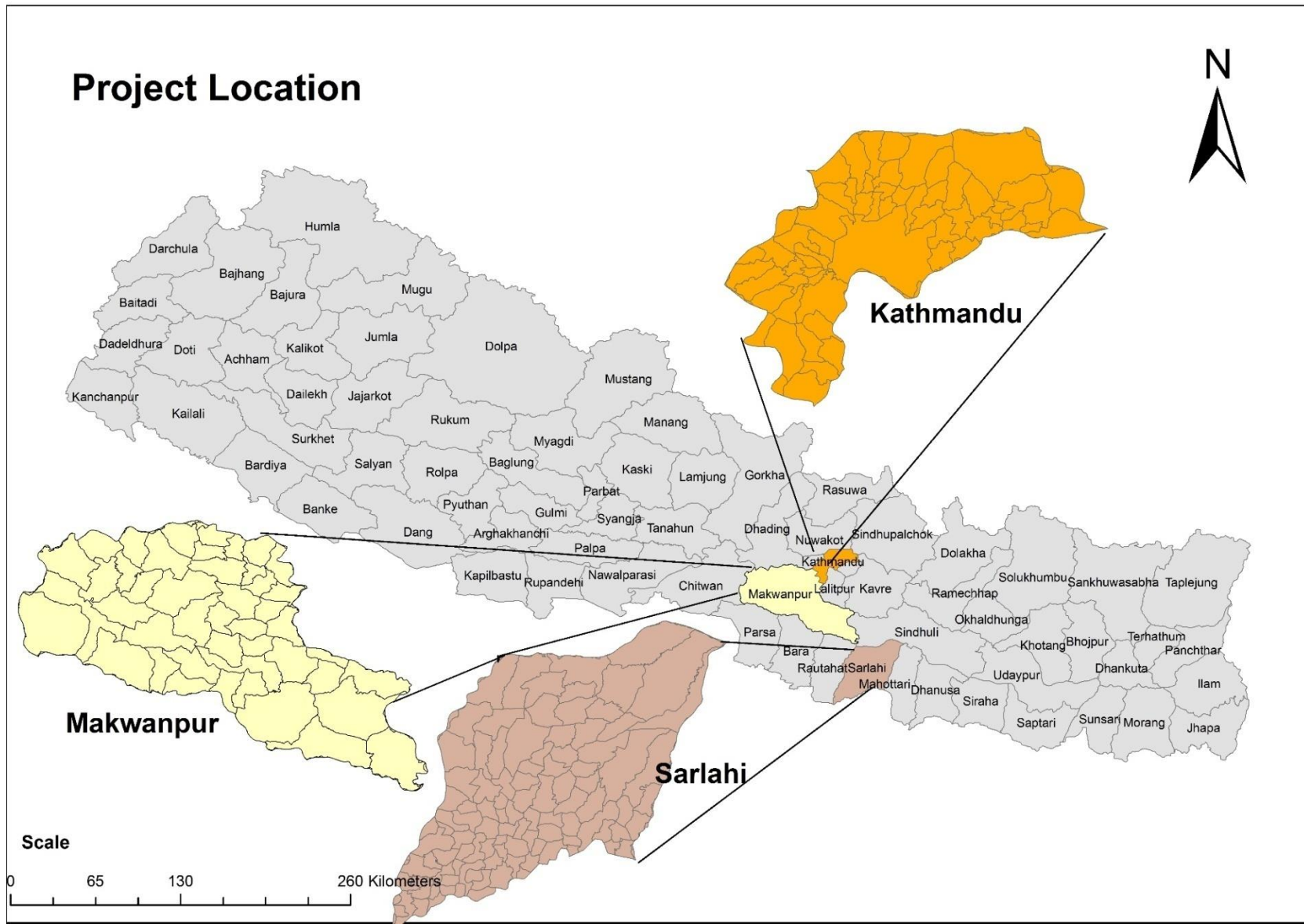
community forests and local livelihoods well developed and managed in sustainable ways as well as models and approaches on SFM recognized and applied by government and other communities as well

## Objectives

- Demonstrate sustainable forest management practices and promote alternative energy to reduce pressure on forest and carbon emission
- Promote development of community forest based mini-enterprises to improve wise use of forest resources and livelihood of marginalized communities
- Draw good models of best approaches in which communities are empowered to manage and use forest resources in a sustainable way



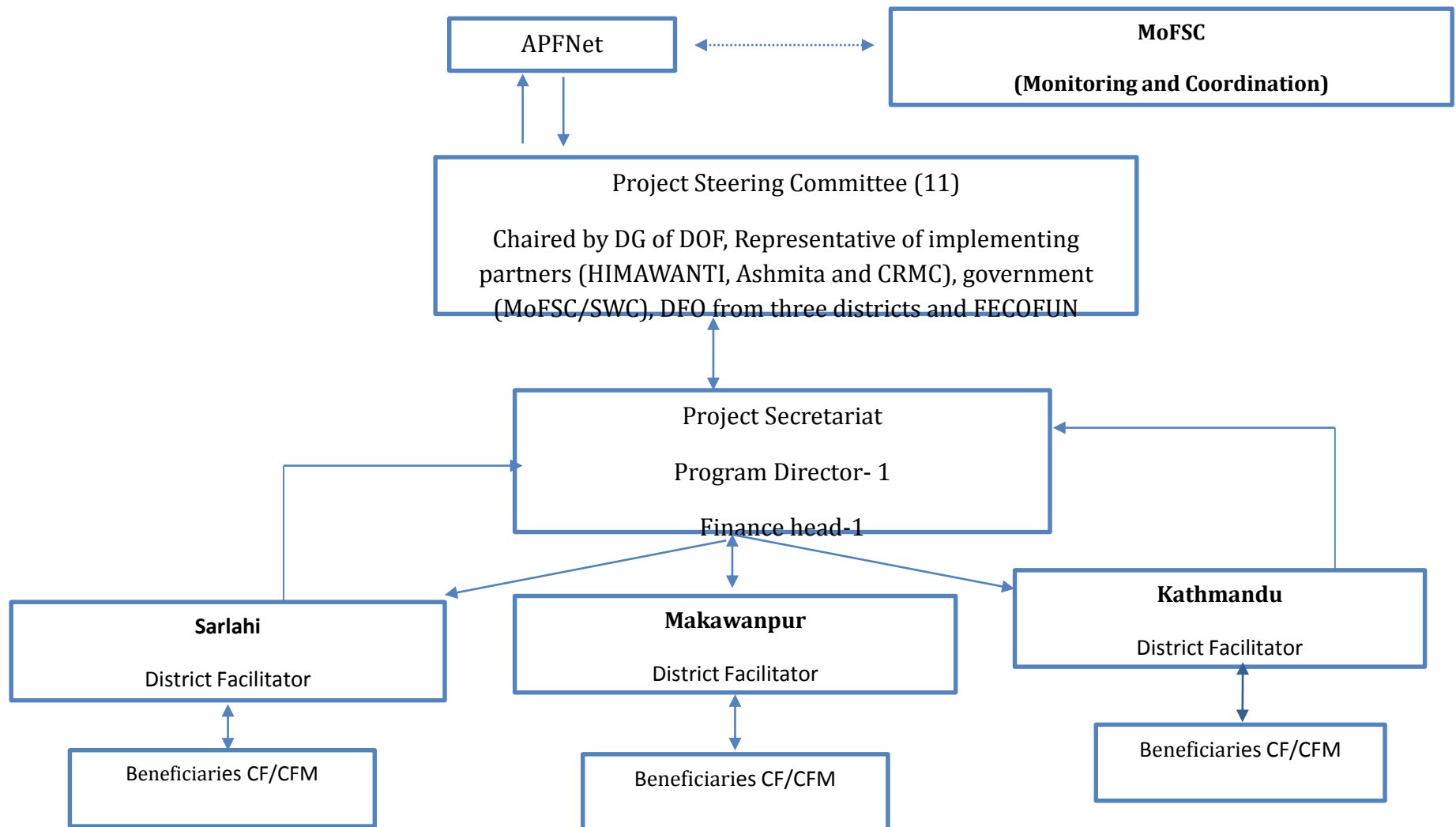
# Project 3 Working Sites







# Project 3 Management Structure





# Project 3

## Expected Outputs



- SFM practiced in 13 CFUGs and 4,317 household benefited through forest based SMEs,
- At least 1,373 Ha of CF sustainably managed and livelihood improved of marginalized and deprived women,
- Nursery established and functioning in all three project locations,
- At least 943.2 tons/Year of carbon sequestered through the project, -AEPC estimate
- This demonstration project replicated in similar geographical and socio-economic regions,
- And project positively inspiring relevant policy amendment and formulation .



# Project 3 Progress

- Inception workshop conducted in Kathmandu on 15<sup>th</sup> October, 2014 (Participants from Government, INGOs, NGOs, Network organizations, CFUGs, Media, APFNet officials)
- Press meeting (details of the project disseminated to public through audio/video and paper media)





## Project 3 Progress

- Forest Inventory started in Community Forest.
  - Forest carbon stock, forest type, biodiversity, wild fauna, annual harvest/growth
  - Nursery site/species identifications were done
- Spider web on Good governance
- Sustainable forest management training





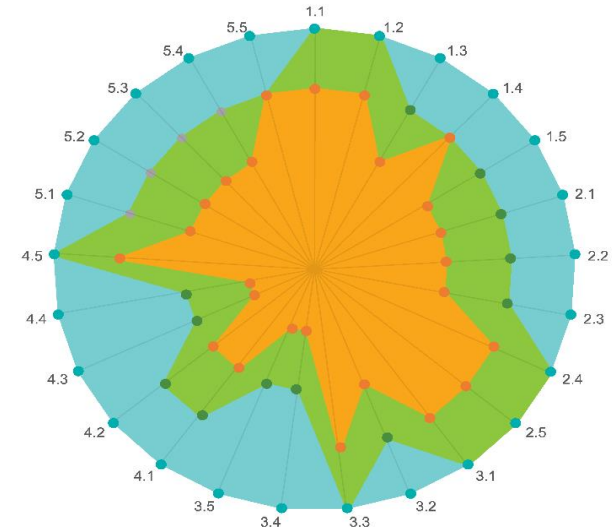
# Project 3 Progress



## Good Governance Capacity Assessment

- Good governance performance measurement done in all 13 CFUGs
- Governance status published in local newspaper

### LAGLAGEPAKHA COMMUNITY FOREST



	S.N.	EXISTING LEVEL	USER'S DESIRED LEVEL	IDEAL LEVEL
PARTICIPATION (P)	1.1	3	4	4
	1.2	3	4	4
	1.2	2	3	4
	1.4	3	3	4
	1.5	2	3	4
Total	13	17	20	
TRANSPARENCY (T)	2.1	2	3	4
	2.2	2	3	4
	2.5	2	3	4
	2.4	2	4	4
	2.5	3	4	4
Total	12	16	20	
ACCOUNTABILITY (A)	3.1	3	4	4
	3.2	2	3	4
	3.2	3	4	4
	3.4	1	2	4
	3.5	1	2	4
Total	10	15	20	
LEGITIMACY OF RULES (R)	4.1	2	3	4
	4.2	2	3	4
	4.3	1	2	4
	4.4	1	2	4
	4.5	3	4	4
Total	9	14	20	
INCLUSIVENESS AND EQUITY (I & E)	5.1	2	3	4
	5.2	2	3	4
	5.3	2	3	4
	5.4	2	3	4
	5.5	3	3	4
Total	11	15	20	

Criteria	Indicators
P	Actors that prepared operational plan & constitution of the CFUG.
	Democratic exercise in executive committee formation and leadership change.
	Absence percentage of users in the last assembly/ meeting/ attendance of unrepresented groups in meetings and assemblies.
T	Mode of decision-making during meetings and assemblies.
	Users' participation in tours and trainings conducted by the CFUG.
	Information dissemination to users by executive committee.
A	Knowledge of operational plan & Constitution.
	Sharing the reports of human resource development activities.
	Management of bills, records and other economic transactions.
R	Status of public working of CFUG's fund.
	Decisions about CFUG's funds income and expenditure.
	Knowledge of roles, duties and responsibilities of operational plan & constitution by committee members.
I & E	Performance of committee members.
	Successfull completion of the different activities undertaken by CFUG.
	Funding generated/ sources of investments.
I & E	Explicitly stated and mandated roles, rights and responsibilities.
	Clear goals, vision and objectives of CFUG.
	Ownership and use right to resources are clear.
I & E	Proper enforcement of rules and norms.
	Preparation of annual plan for implementing the operational plan.
	Conservation of executive committee and representation of all stakeholders.
I & E	Mechanism of recourse to forest resources and use.
	Funding system of benefit sharing mechanisms.
	System of recruiting forestry jobs.
I & E	Supplementary programs to promote participation from disadvantaged groups.
	Supplementary programs to promote income generating activities for disadvantaged groups mainly of poor ones.



# Project 3 Progress

## Sustainable Forest management Training

- 130 participants attended the training program
- Experts from Government and other sector demonstrated SFM in 4 days training
- Training provided technical knowledge and field demonstration on SFM





**THANK YOU**

