

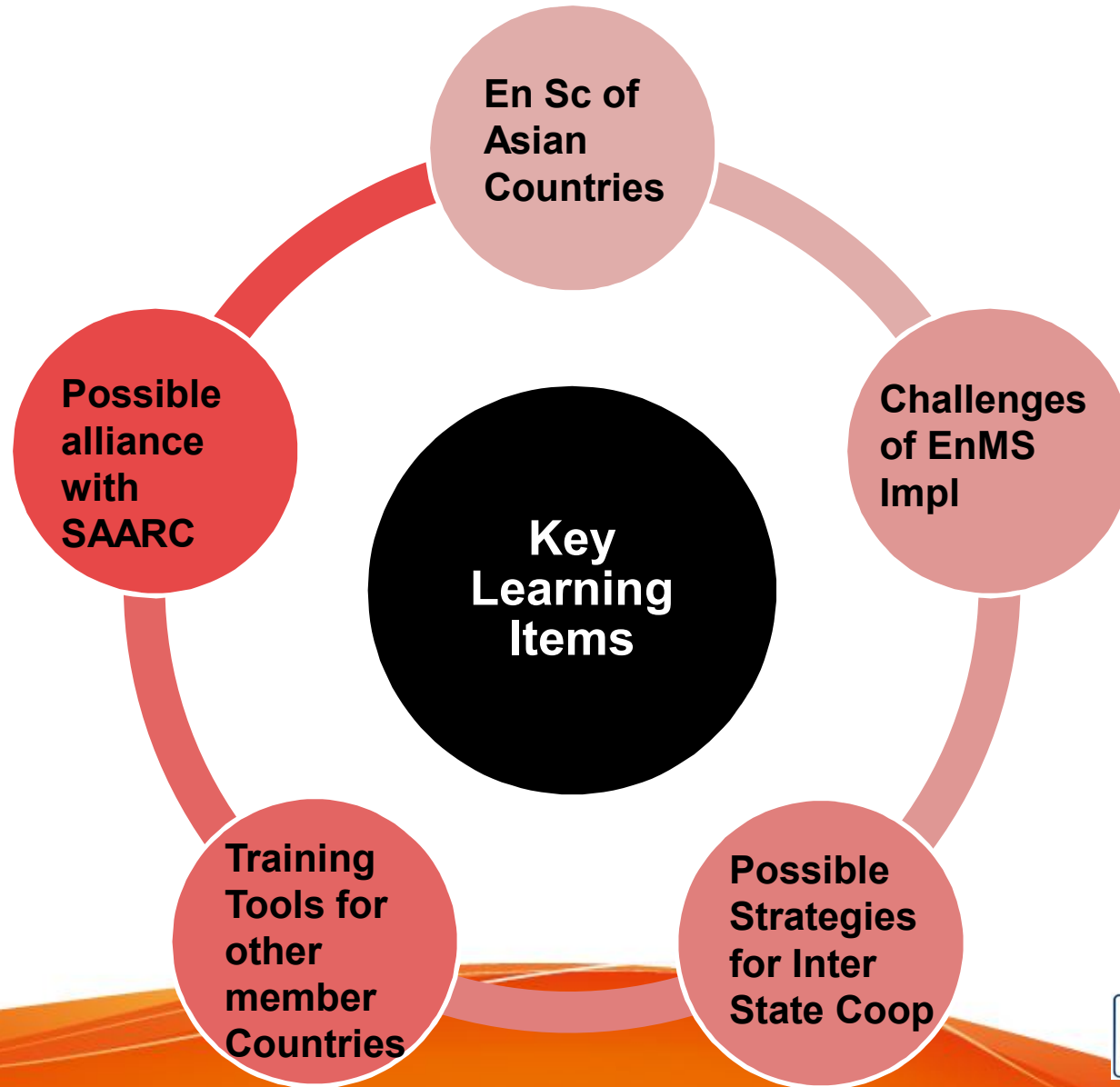


Action Plan for popularize Energy Management System (ISO 50001:2011EnMS)

VK Srivastava, Additional Director
Petroleum Conservation & Research Association
Ministry of Petroleum & Natural Gas, India



Key Learning Items from OSM on Innovative enterprises implementing energy management system(ISO 50001)



Innovation Theme	Reason for selecting innovation theme:	Process plan

Challenges	Plan for Innovation
<p>Challenging Issues-Technical:</p> <ol style="list-style-type: none"> 1) Setting of energy baseline 2) Energy forecasting: 3) Defining SEC in case of multiple products: 4) M&V Issue 	<ul style="list-style-type: none"> •Awareness on more accurate baseline studies factorizing variables like Cap Uti..and other variables •Normalizing Techniques to be properly understood and disseminated •I am a CMVP, hence can work on M&V

Problem Contents

- Lot of work is being done on Baseline Calc & Normalizing
- Very less CMVPs

(Expected)Effects

Shall mature with increase in Energy Usage pattern

Specific & Concrete innovation Contents

Action Plans will be implemented by ●●(day)●●(month)●●(year)

Innovation Theme	Reason for selecting innovation theme:	Process plan

Challenges	Plan for Innovation
<p>Challenging Issues-Non Technical:</p> <ul style="list-style-type: none"> •Culture of extravagance and waste •Lack of market support to energy technology •Fears of compromising the production •Attitudinal Change •Absence of Top-Down Approach. •Quality of Consultants •Unethical Practice. 	<ul style="list-style-type: none"> •Awareness •Specific Training on these issues •Responsibility Global warming

Problem Contents

- Lot of work is being done on Baseline Calc & Normalizing
- Very less CMVPs

(Expected)Effects

Undertaking 400+ Eas per year

Action Plans will be implemented by 30th (day)11(month)2014(year)

Specific & Concrete innovation Contents

Shall make a part of EA Training

Innovation Theme	Reason for selecting innovation theme:	Process plan

Challenges	Plan for Innovation
<p>Challenging Issues-post Impl:</p> <ul style="list-style-type: none"> •MR is not empowered adequately. •Resistance to one more new system •There is no acceptable Protocol on Measurement & Verification •Deviating from L1 Policy to LCC. <p>Others;</p> <p>Offering our highly subsidised services to APO members countries thru my friends</p>	<ul style="list-style-type: none"> • To be taken care during EnMS imple training •More CMVP in my organisation <ul style="list-style-type: none"> •Shall write letters on behalf of PCRA

Problem Contents

- Country specific attitude

Specific & Concrete innovation Contents

- Making these issues a part of EnMS Trg

(Expected)Effects

- Proper attitudinal change training
- Sure to get great response

Action Plans will be implemented by 30th day OCT(month)2014(year)