

# Current Issues regarding Risk Assessment for Pesticides in Japan

Atsuko HORIBE

Food Safety Commission Secretariat  
Government of Japan

[www.fsc.go.jp](http://www.fsc.go.jp)

1

## TOPICS

- I. Brief Introduction about Food Safety Commission
- II. Procedure for the Risk Assessment on Pesticide
- III. Current Issues



## BRIEF INTRODUCTION ABOUT FOOD SAFETY COMMISSION

### Historical Background of Food Safety Commission (FSC)

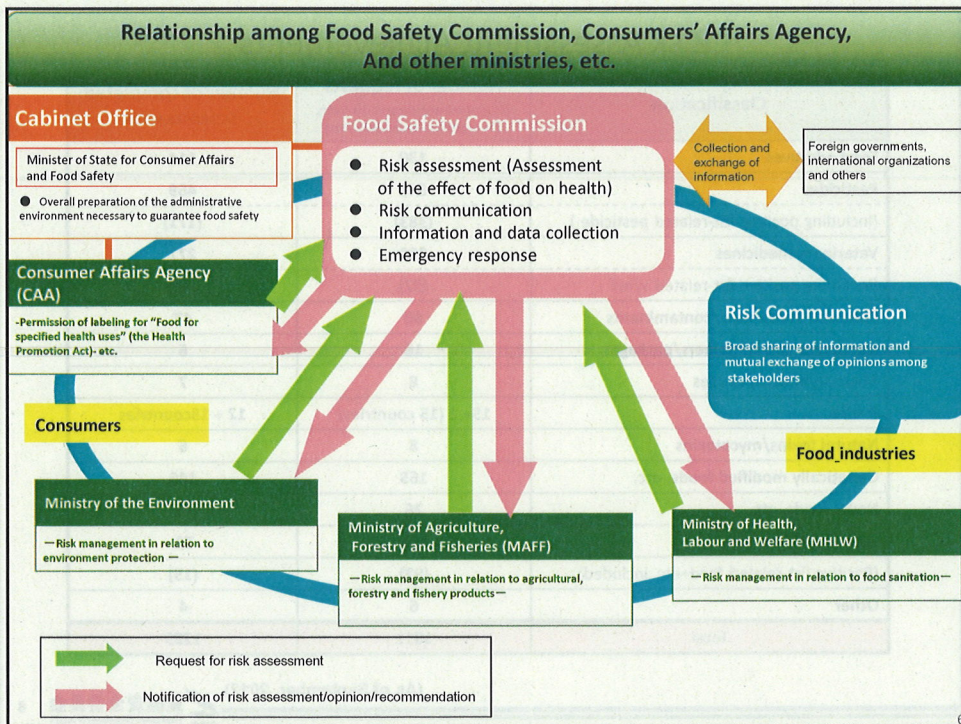


- Food Safety Basic Act was enforced (16 May 2003)  
→ based on the simple recognition that the protection our citizen's health is a top priority
- Introduction of Risk Analysis Principle to food safety administration
- FSC was established as a part of Japanese Cabinet Office, independently from risk managing ministries (1 July 2003 )
- FSC's Mission is to implement science based risk assessments in an objective, neutral and impartial manner



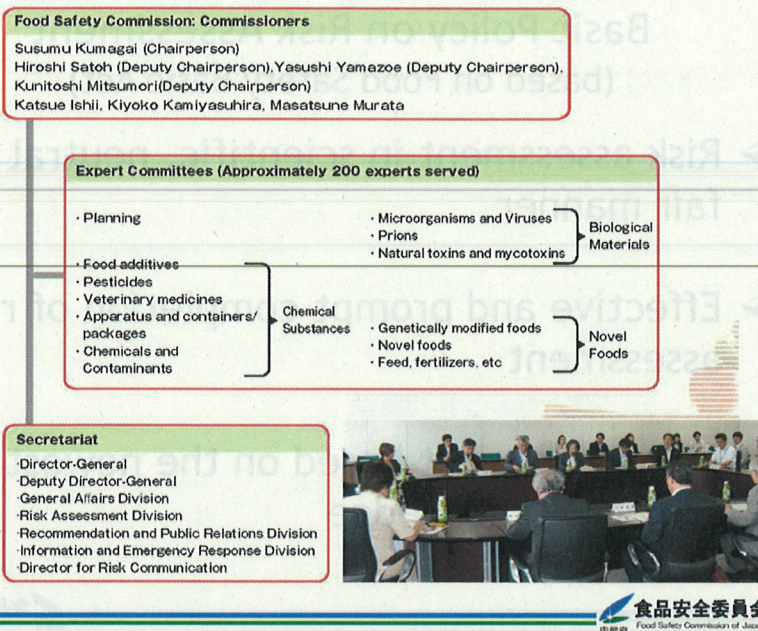
## Basic Policy on Risk Assessment (based on Food Safety Basic Act)

- Risk assessment in scientific, neutral and fair manner
- Effective and prompt completion of risk assessment
- Risk assessment based on the newest scientific knowledge





## Organization



7

## Risk Assessment Achievements

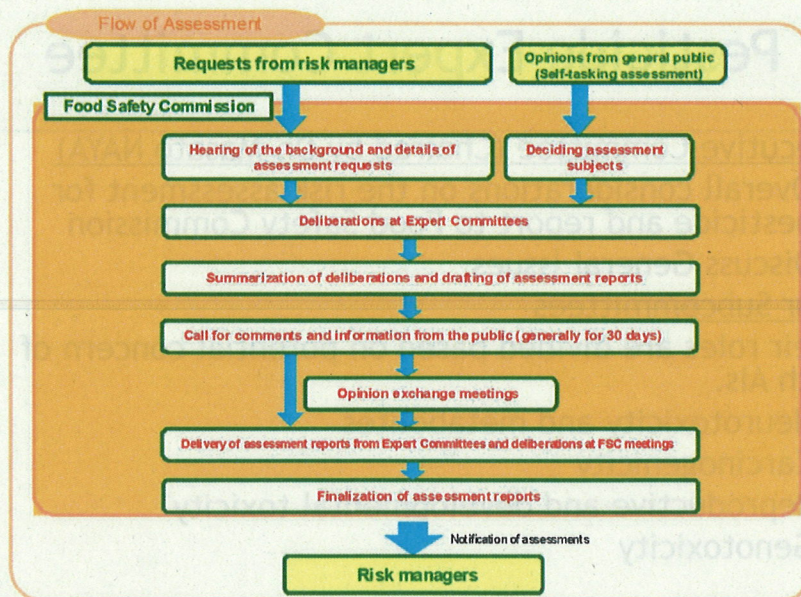
Classification	Number of requests (The number indicated includes the self-tasking assessments)	Number of completed assessments
Food additives	130	114
Pesticides	846	469
(Including positive list-related pesticide)	(383)	(171)
Veterinary medicines	330	277
(Including positive list-related v/m)	(92)	(48)
Chemical substances/contaminants	60	47
Apparatus and containers/packages	16	6
Microorganisms/viruses	8	7
Prions	15+ 1 (15 countries)	12 + 13 countries
Natural toxins/mycotoxins	8	6
Genetically modified foods, etc.	165	146
Novel foods, etc.	76	71
Feed, fertilizers, etc.	150	51
(Positive list-related feed+etc. included)	(92)	(15)
Other	6	4
<b>Total</b>	<b>1811</b>	<b>1223</b>

(As of September 2012)

8



# PROCEDURE FOR THE RISK ASSESSMENT ON PESTICIDE





## How does FSC start Risk Assessment?

- When receiving the official request from risk managers, FSC starts risk assessment for pesticides.

Original(Different?) timeline causes the problem when considering the Global Joint Review and other cooperative works!!

## Pesticide Expert Committee

Executive Committee (Chaired by Dr. Masato NAYA)

- Overall considerations on the risk assessment for pesticide and report to Food Safety Commission
- Discuss General Issues

Four Subcommittees

Their roles are divided based on potential concern of each AIs.

- Neurotoxicity and metabolites
- Carcinogenicity
- Reproductive and developmental toxicity
- Genotoxicity



## CURRENT ISSUES

## Re-evaluation

- Japan doesn't have a system for re-evaluation.
- We are now going to evaluate all pesticides on revision to the "Positive List" on pesticides.  
→Substantially, we carries out re-evaluation for registered pesticides.



## Scientific Issues

- X-pesticides not obtain sufficient information for toxicity (e.g. POPs)
- Adoption vs toxicity (for example, the evaluation methodology for liver hypertrophy and/or weight change)
- How to handle metabolites for residue definition for exposure assessment

## Political Issues

- How to accelerate risk assessment with keeping quality?
- How to invite the experts (as assessor) and secretariats, especially for drafting evaluation report?  
Researchers are not always suitable as assessor.
- How to consider international coordination for example participation on GJR and/or other international works?  
What is the basic understanding on the definition of “Harmonize”?



Thank you !





