

Message from the President

A new organization, the HOKKAIDO RESEARCH ORGANIZATION has been established integrating 22 former research institutes of the Hokkaido Prefecture in order to adapt to various ever inflating requests from people of the island Hokkaido promptly and essentially.

Key words that will carry the organization are "Free mind", "Cooperation" and "Amalgamation (Fusion)" for both inside and outside operation. By the activities 1+1 could be more than 2, and 2+3 would hopefully be much more than 5.

There would be numerous difficulties to open the future horizon of new industrial activities and new life mode establishment for our Hokkaido, a tremendous help and encouragement from men and women of our land shall be essential to carry out our tasks being handed. We are going with the attitude of "Haste not, Rest not" inquiring fruitful future of our land by your supports.

Norihito TAMBO, Dr.Eng.
President of Hokkaido Research Organization



HRO's Fundamental Principles

The Hokkaido Research Organization will serve as support for a better daily life and economy in Hokkaido, devoting ourselves to creating a bright future for the prefecture.

<Mission>

We will work to safeguard Hokkaido's comfortable lifestyle and rich natural environment, through the nature- and region-focused research and the transfer of technical knowledge.

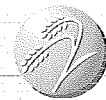
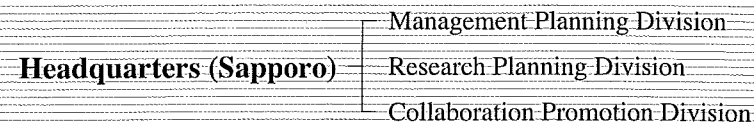
<Aim>

We will serve as an inter-industrial research institution to share the benefit with communities. We aim to earn the confidence of local residents and to create a globally-accredited Hokkaido.

<Principle>

We will observe research philosophies and laws, endeavor to generate new knowledge and technology with people's perspectives and tireless aspirations in mind, and provide fair and equitable services.

Organizational Chart



Agricultural Research Department

Central Agricultural Experiment Station (Naganuma)
Kamikawa Agricultural Experiment Station (Pippu)
Tenpoku Sub Station (Hamatonbetsu)
Donan Agricultural Experiment Station (Hokuto)
Tokachi Agricultural Experiment Station (Memuro)
Konsen Agricultural Experiment Station (Nakashibetsu)
Kitami Agricultural Experiment Station (Kunneppu)
Animal Research Center (Shintoku)
Ornamental Plants and Vegetables Research Center (Takikawa)



Fisheries Research Department

Central Fisheries Research Institute (Yoichi)
Hakodate Fisheries Research Institute (Hakodate)
Kushiro Fisheries Research Institute (Kushiro)
Abashiri Fisheries Research Institute (Abashiri)
Wakkanai Fisheries Research Institute (Wakkanai)
Mariculture Fisheries Research Institute (Muroran)
Salmon and Freshwater Fisheries Research Institute (Eniwa)
Donan Research Branch (Yakumo) Doto Research Branch (Nakashibetsu)



Forest Research Department

Forestry Research Institute (Bibai)
Donan Station (Hakodate city) Doto Station (Shintoku)
Dohoku Station (Nakagawa)
Forest Products Research Institute (Asahikawa)



Industrial Technology Research Department

Industrial Research Institute (Sapporo)
Food Processing Research Center (Ebetsu)



Environmental and Geological Research Department

Institute of Environmental Sciences (Sapporo)
Geological Survey of Hokkaido (Sapporo)



Building Research Department

Northern Regional Building Research Institute (Asahikawa)



Local Independent Administrative Agency
Hokkaido Research Organization



Hokkaido's 22 research institutions have been incorporated into the
Hokkaido Research Organization (HRO)
since April 2010.

HRO Headquarters

Address : North 19 West 11, Kita-ku, Sapporo 060-0819 JAPAN
T E L : +81-(0)11-747-0200
U R L : <http://www.hro.or.jp/>
E-mail : hq-cps@hro.or.jp

Twenty Two Research Institutions Are Uniting:

Shaping the Promising Future of Hokkaido

Agricultural Research Department

8 agricultural and livestock experiment stations

Develops optimal crops and technology in Hokkaido; rears livestock with feeding technology development; and runs studies on food safety and biotechnology.

Fisheries Research Department

7 local Fisheries Research Institutes

Research, technical development and guidance are focused on: promoting fishery resource management and stock enhancement, supplying safe and trustworthy marine products and applying those products for highly-valued use, and ensuring sound eco-systems and biodiversity in the waters.

Forest Research Department

Forestry Research Institute
Forest Products Research Institute

The department's technology development aims to: enrich locally-suitable forests and environments, promote sound development of the timber industry and recycling of forest resources, and bring benefits to the industry. The department also transfers research products to the public and private sectors as well as to forest owners.

Industrial Technology Research Department

Industrial Research Institute
Food Processing Research Center

In partnership with universities and national institutions, the department is engaged in industrial and food processing technologies research. The department also helps local companies commercialize and implement their research products, through consultation and guidance.

Environmental and Geological Research Department

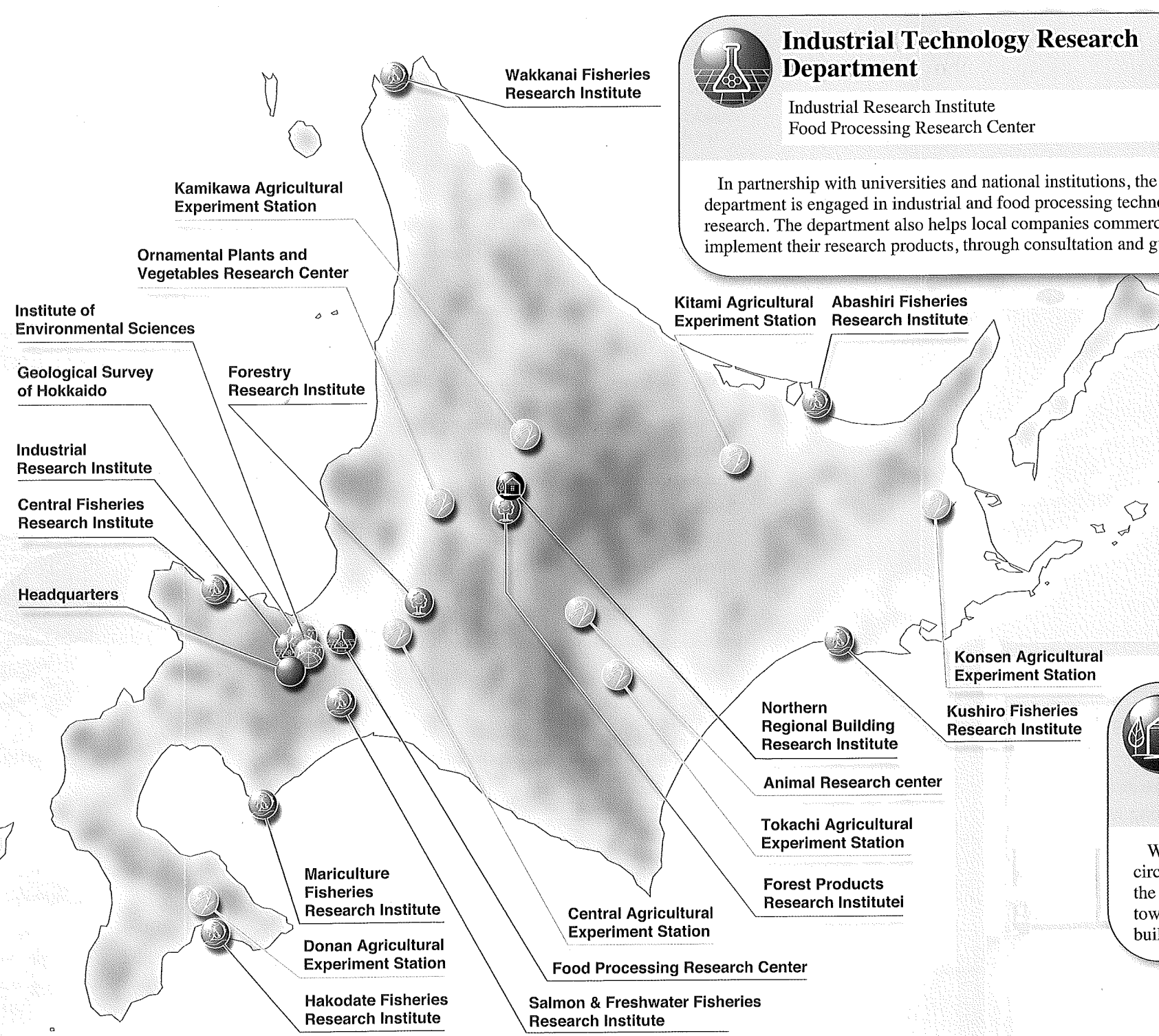
Institute of Environmental Sciences
Geological Survey of Hokkaido

Research topics range from local environment protection and global environmental issues to biodiversity conservation, earthquake and volcano eruption prevention, and to underground resource development.

Building Research Department

Northern Regional Building Research Institute

Working to create comfortable living circumstances with lower environmental burdens, the department studies sustainable construction and town-planning, providing technical support to the building industry.



- We will meet a variety of needs, promptly and appropriately.
- We will enrich technical support to solve problems and help improve local communities/industries.
- With 22 institutions and 1,200 personnel, we will enhance research and provide technical support.

● Headquarters

The Headquarters consists of the following divisions, serving as the administrative core of the organization:

- **Management Planning Division** works to secure, allocate and assign budgets and personnel for effective research and support.
- **Research Planning Division** sets needs-based research priorities, supervises research progress, and promotes research products.
- **Collaboration Promotion Division** encourages collaboration among different research fields and with external organizations, intensifying research, support and application.