

TalkMiner

November 26, 2012
Incubation Center
Research and Technology Group
Fuji Xerox Co., Ltd.



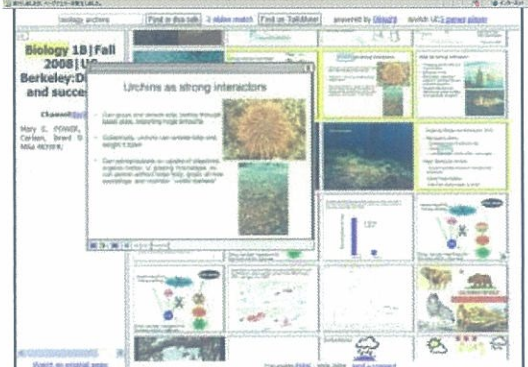
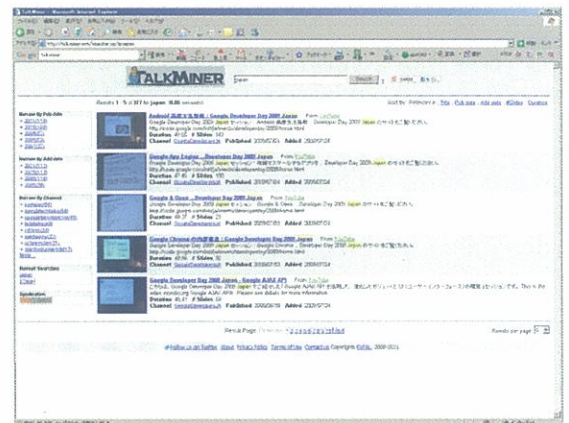
© 2012 Fuji Xerox Co., Ltd. All rights reserved.



TalkMiner Overview

➤ TalkMiner aims to:

- Provide a rich portal for video-based lecture materials on the web
- Correct and index web-based lectures
- Improve access video through
 - ✓ Slide identification and extraction
 - ✓ OCR and text indexing
 - ✓ Search within videos and random access GUI



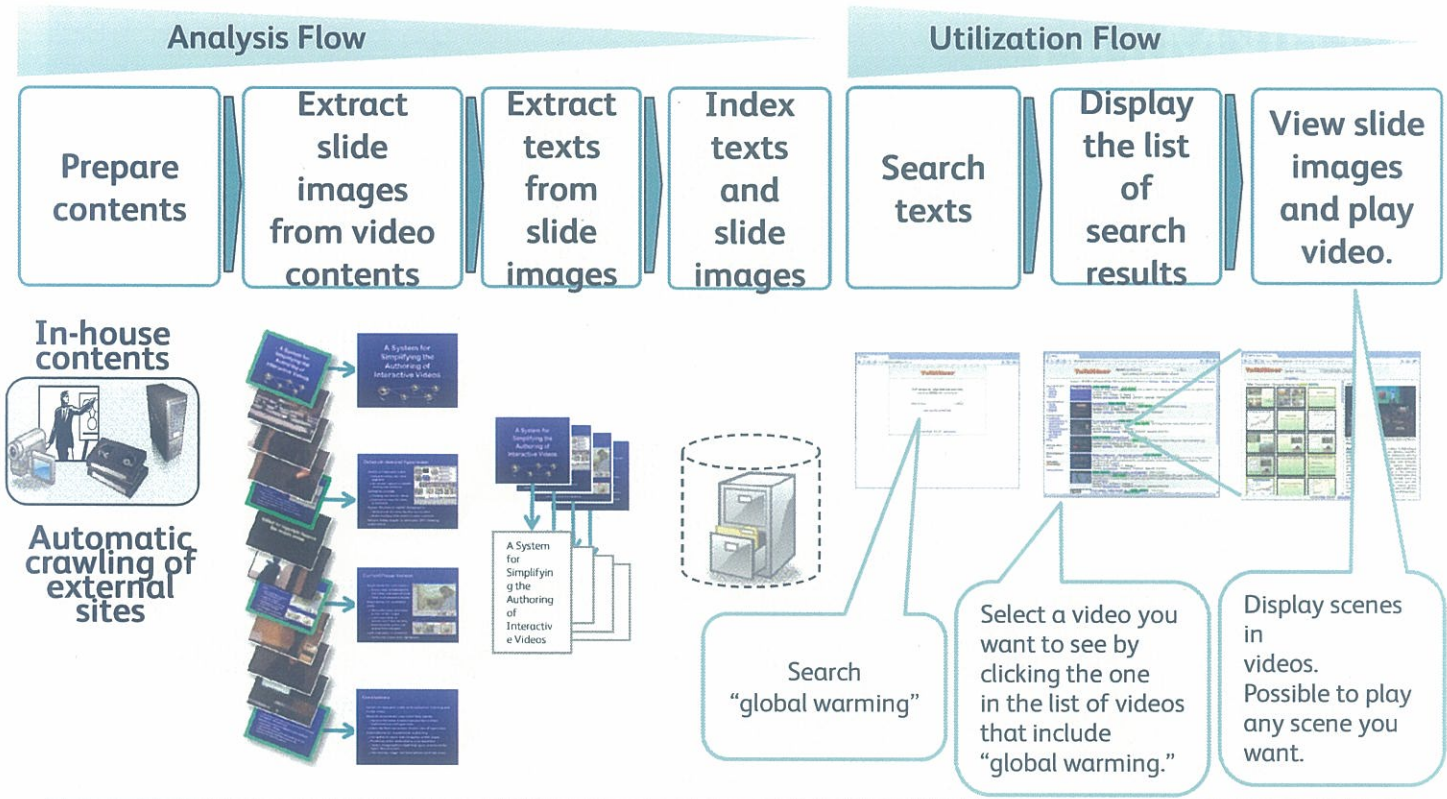
Fuji Xerox company site
<http://www.fujixerox.com/eng/company/technology/talkminer/index.html>

Trial Site
<http://talkminer.com/>

© 2012 Fuji Xerox Co., Ltd. All rights reserved.



TalkMiner's Flow



NEWS RELEASE

FOR IMMEDIATE RELEASE

E-Learning Consortium Japan
Fuji Xerox Co., Ltd.
Fuji Xerox Learning Institute Inc.

LAUNCH JOINT VERIFICATION EXPERIMENTS ON TALKMINER, THE VIDEO SEARCH TECHNOLOGY

TO ENABLE KEYWORD SEARCHES OF SPECIFIC VIDEO SCENES

TOKYO, January 11, 2012 –Fuji Xerox Co., Ltd. and Fuji Xerox Learning Institute Inc. today launch verification experiments of the video search technology, TalkMiner, using the e-Learning Solution on the Web operated by E-Learning Consortium Japan (eLC), a nonprofit organization.

TalkMiner, researched and developed by Fuji Xerox's US-based affiliate, FX Palo Alto Laboratory Inc., automatically extracts and indexes text from slides in a video, enabling to search videos without metadata. From video clips such as lectures and speeches on the web, just by entering a keyword into the text box and pressing the search button, users can find clips that contain the keyword or video scenes that feature the keyword.

Recent years, the improvement of video-related services and infrastructures is spreading use of video contents over networks, with users being able to use online search engines to find specific videos. However, videos without metadata such as date, producer, search keywords or description cannot be found by general search engines, while giving metadata to videos is normally done manually and is time consuming. Even if a video with metadata can be located by searching, search engines are normally not capable of finding a specific scene of interest in the video.

In the verification experiments, an eLC trial site (<http://talkminer.com/elc>) is set up for registered eLC members –many of them own many video-based teaching materials–, and Fuji Xerox Learning Institute will lead the experiments to verify feasibility of this technology's commercialization. In partnership with eLC and its members, Fuji Xerox and Fuji Xerox Learning Institute are aimed at exploring ways of providing new value-added services.

For details of TalkMiner, please access:

<http://www.fujixerox.com/eng/company/technology/talkminer/index.html>

###

Overview of E-Learning Consortium Japan

Location: 2F Shin-Nihonbashi Nagaoka Bldg., 16-5 Nihonbashi Kodenma-cho, Chuo-ku, Tokyo

Chairman: Hidekuni Komatsu

Contact: Tel: 03-5640-1017 FAX: 03-5640-1018

Email: info@elc.or.jp

URL: <http://www.elc.or.jp/tabid/134/Default.aspx>

Description: A nonprofit organization established under the partnership of the industrial, government and academic sectors to continuously promote active support for e-Learning users and providers.

Many people involved in e-Learning recognize the importance of transcending organizational boundaries of companies, schools and government offices to participate in eLC's activities and build collaborative relations.

Major eLC activities include:

1. Gathering, studying, researching and providing e-Learning-related information.
2. Enlightening users and providers, as well as developing/implementing educational programs.
3. Researching the standardization technologies of e-Learning systems and contents, and promoting the standardization.

About e-Learning Solution on the Web

A website run by E-Learning Consortium Japan for searching e-Learning products and services with more than 1,000 registered e-Learning products and teaching materials. Also, it aims at supporting e-Learning users and providers by offering e-learning glossary, standard specifications (SCORM), seminar handouts and archives.

URL: <http://www.elsw.jp/> (only in Japanese)