

Fuji Xerox's New Cloud & Mobile Solutions

Working Folder & Mobile Integrated Application

November 26, 2012

Product Marketing,
Global Products Sales & Marketing
Fuji Xerox Co., Ltd.



© 2012 Fuji Xerox Co., Ltd. All rights reserved.

FUJI xerox 

1. Working Folder
2. Mobile Integrated Application

FUJI xerox 

1. Working Folder
2. Mobile Integrated Application



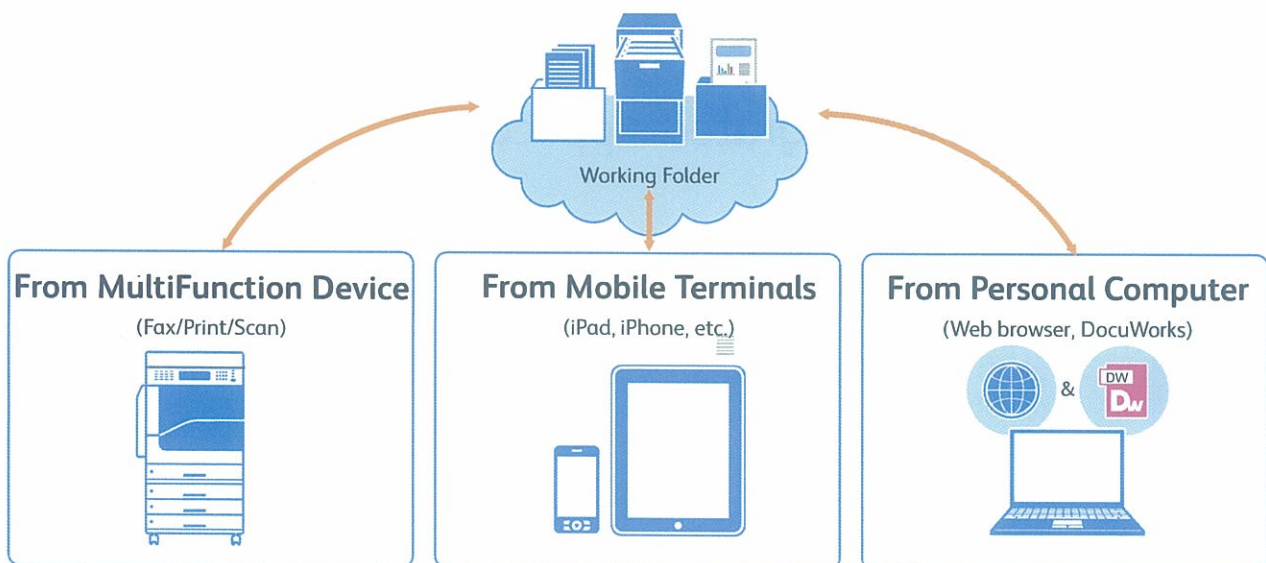
Working Folder: Overview

“Working Folder” is a cloud data storage service available at fixed monthly cost.

Easy to Start: internal server and system administrator are no longer required

Easy to Access: access to Working Folder is available from anywhere, even if you are out of your office

Easy to Use: offering access from multifunction device, DocuWorks and mobile terminals, Working Folder can be used in various office scenes



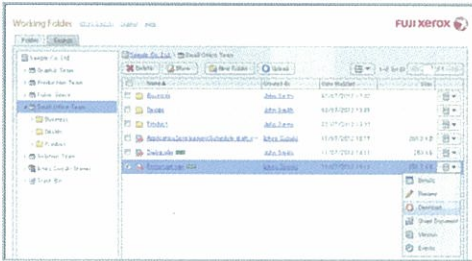
*"iPad" and "iPhone" are trademarks of Apple Inc., registered in the U.S. and other countries.



Demonstration: Access from Web Browser

- Web browser is the key portal to Working Folder:
 - Documents can be uploaded/downloaded, edited, moved and deleted from PC Web browser.
 - Administrator can manage user, view logs and perform other management activities from Web browser.

For User



• Easy to upload / download documents via Web browser.

Key Features

- File Upload^{*1*} / Download
- Move
- Search^{*3} (Folder name, file name, date (creation/update), author(creation/update)
- Delete
- Edit
- Send URL
- Admin features

*1: NA from web browser on iOS/Android terminals.
 *2: Maximum file size is 500MB.
 *3: Full-text search is not available.

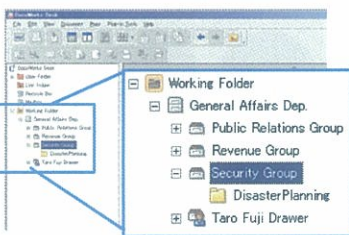
For Administrator



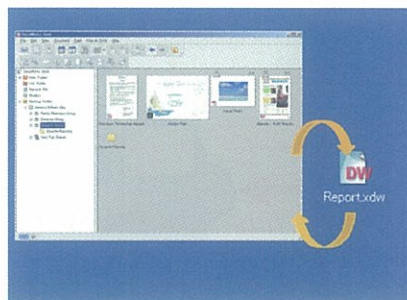
• Easy to setup/manage

Demonstration: DocuWorks Linkage

- Working Folder can be seamlessly accessed from DocuWorks Desk:
 - Working Folder's Cabinet, Drawers and Folders can be accessed from DocuWorks Desk
 - Upload/Download files with simple drag & drop operation



• Direct access from DocuWorks Desk



- File upload & download to and from the Working Folder using simple drag & drop operation
- Thumbnail images are available for DocuWorks, TIFF and PDF files

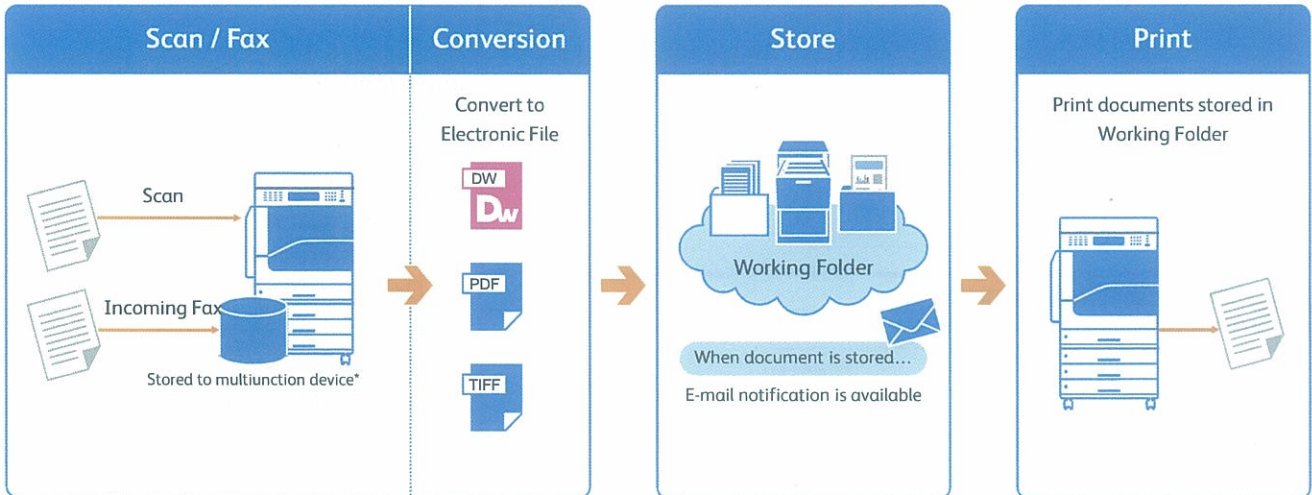
Key Features

- File Upload / Download (drag & drop)
- Move
- Search^{*1} (file name, date (creation/update), author (creation/update)
- Delete
- Change file name

*1: Full text search is not available.

Demonstration: Multifunction Device Linkage

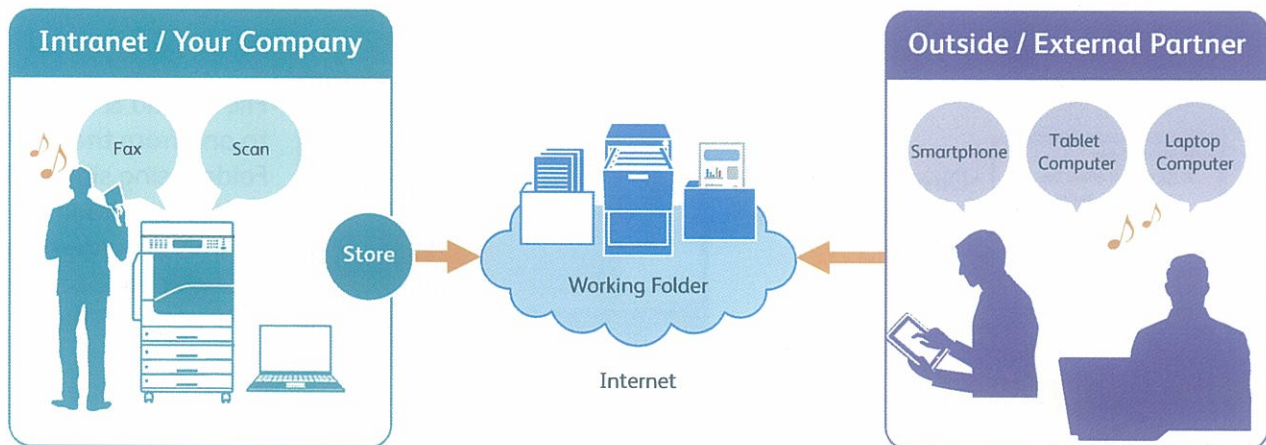
- Using Fuji Xerox multifunction device, documents can be scanned to Working Folder and printed from Working Folder directly.
- Incoming fax documents can be automatically routed to Working Folder. By adding e-mail notification, you can take immediate action to important fax.



* For supported models, consult your sales representatives

Customer Benefit

With monthly charging system, Working Folder can be used with minimal initial cost. System administrator is not required but still offers secure document storage in the cloud and minimises risk of information leakage. Linkage with MFD, DocuWorks and mobile terminal offer further efficiency to your office work.

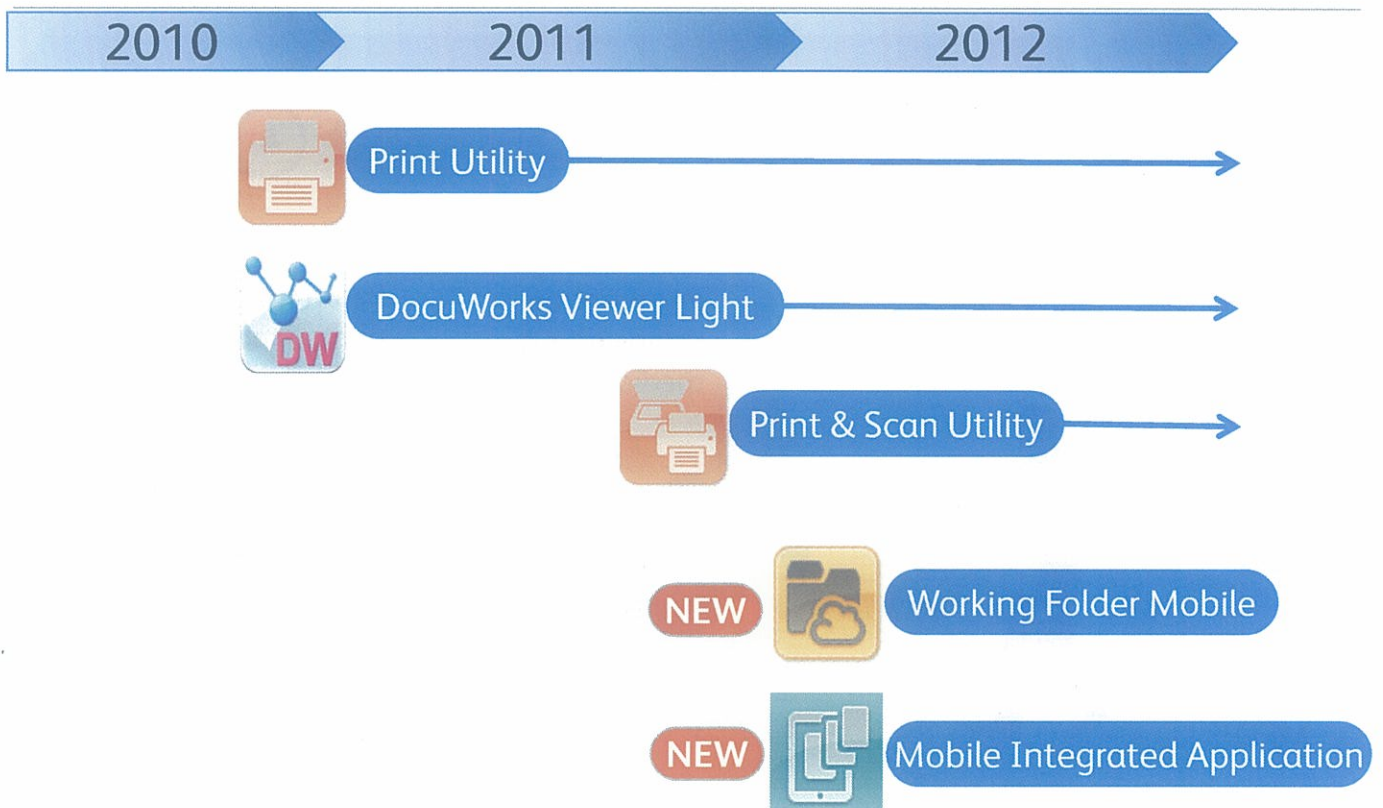


Support sales activities while maintaining security
Speedy and secure transaction with external partners

1. Working Folder
2. Mobile Integrated Application

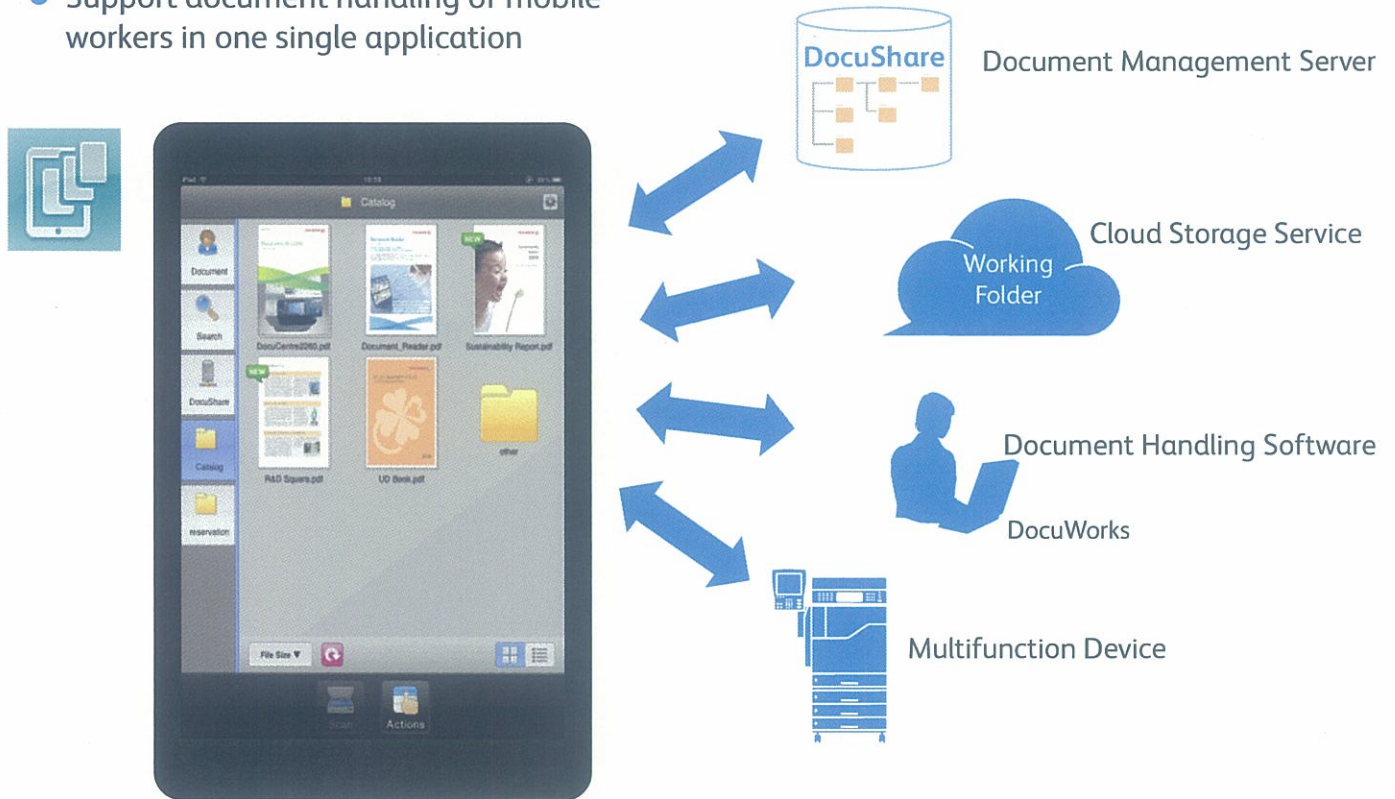


Fuji Xerox Mobile Solutions

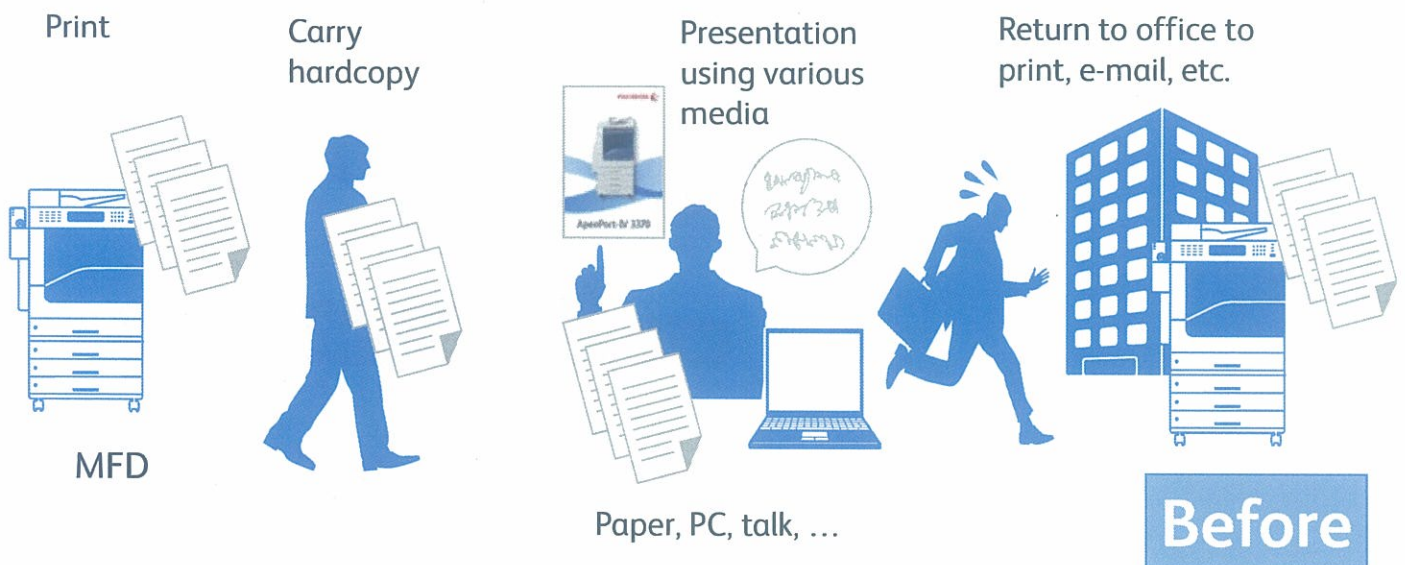
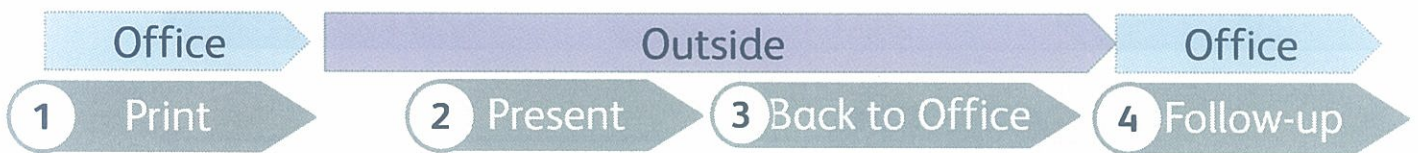


Mobile Integrated Application: Overview

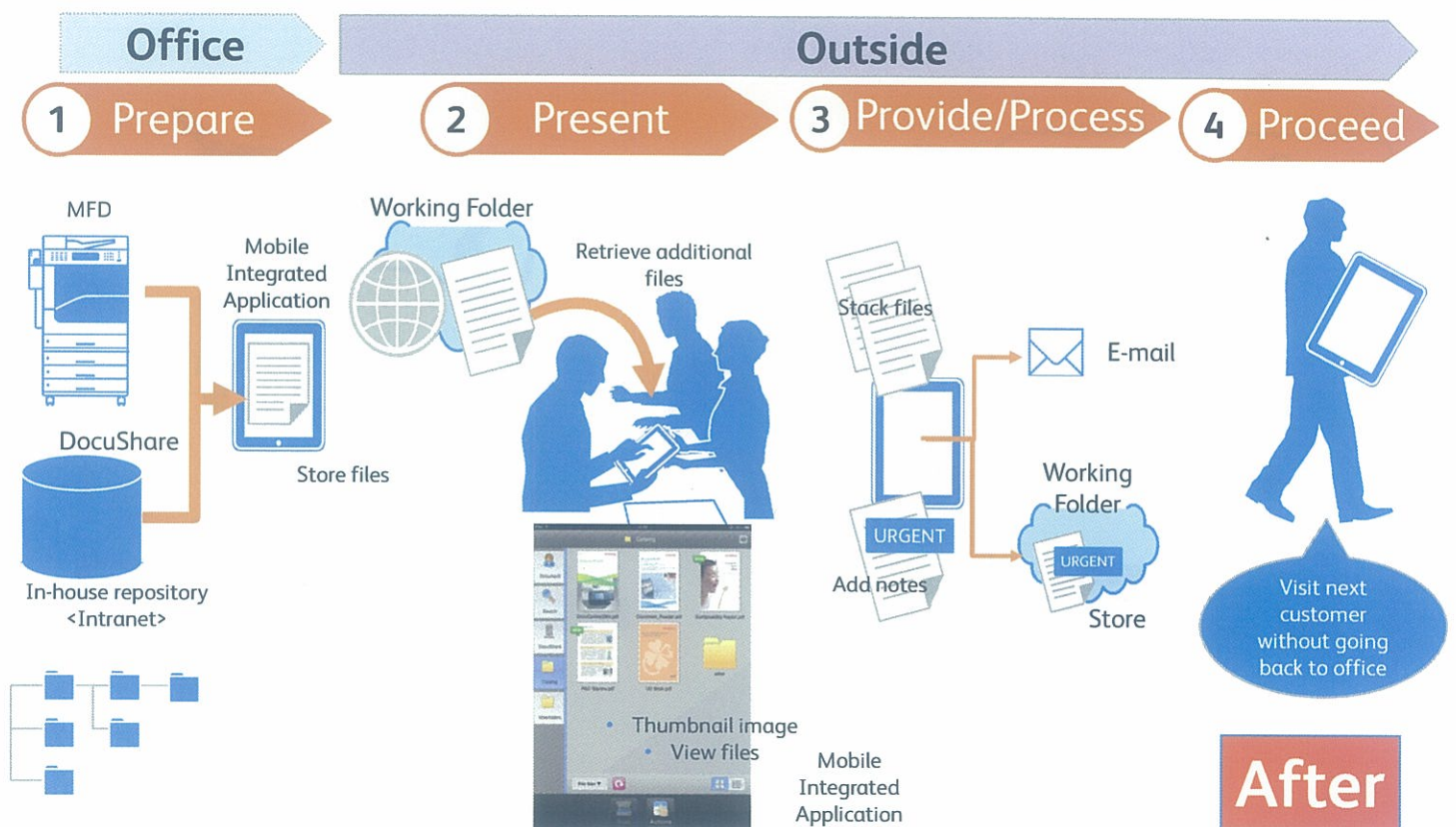
- Support document handling of mobile workers in one single application



Demonstration: Advanced Mobility for Sales (Before)



Demonstration: Advanced Mobility for Sales (After)



After

Customer Benefit

- Access to company database from outside your office results to better communication with customer
- Can manage both documents and movies with simple and intuitive drag & drop operation
- Powerful presentation tool with thumbnail display, zoom, and other functions

- Sales can close all activities without returning to office, and can spend more time for customer calls
- Result in good communication / collaboration with your customer or partner using tablet PC
- Useful in various scenes that require external activities and customer visit

