



# WCO & Single Window APEC

## Single Window Regional Workshop, Melaka; Oct. 16-19 2012




Gareth Lewis



WORLD CUSTOMS ORGANIZATION  
ORGANISATION MONDIALE DES DOUANES



## Single Window; What's Behind It?





## Structure of this Presentation

1. The WCO - strategic challenges and priorities
2. Some key instruments
3. Customs in the 21<sup>st</sup> Century
4. Coordinated Border Management
5. The Customs view of Single Window
6. Data harmonization
7. The WCO Single Window Survey
8. Challenges and the Way Ahead



**The World Customs Organization (WCO) is the only intergovernmental organization with competence in Customs matters.**





## WCO Primary Goal:

**“To secure the highest degree of harmony and uniformity in Customs”**

*Convention established in 1952 to achieve that goal amongst 177 global members that collectively process > 98% of global trade*



## Evolution of Customs

**Revenue Collection of Import Taxes - duties & excise**

**Protection of Economic Interests - domestic industry**

**Protection of Society - health, safety - (drug trafficking, firearms, environment, etc.)**

**Economic Development - trade, investment- (trade facilitation)**

**Security - terrorism - (shifting focus to the entire supply chain)**

**Framework of Standards/C21**

## Customs function

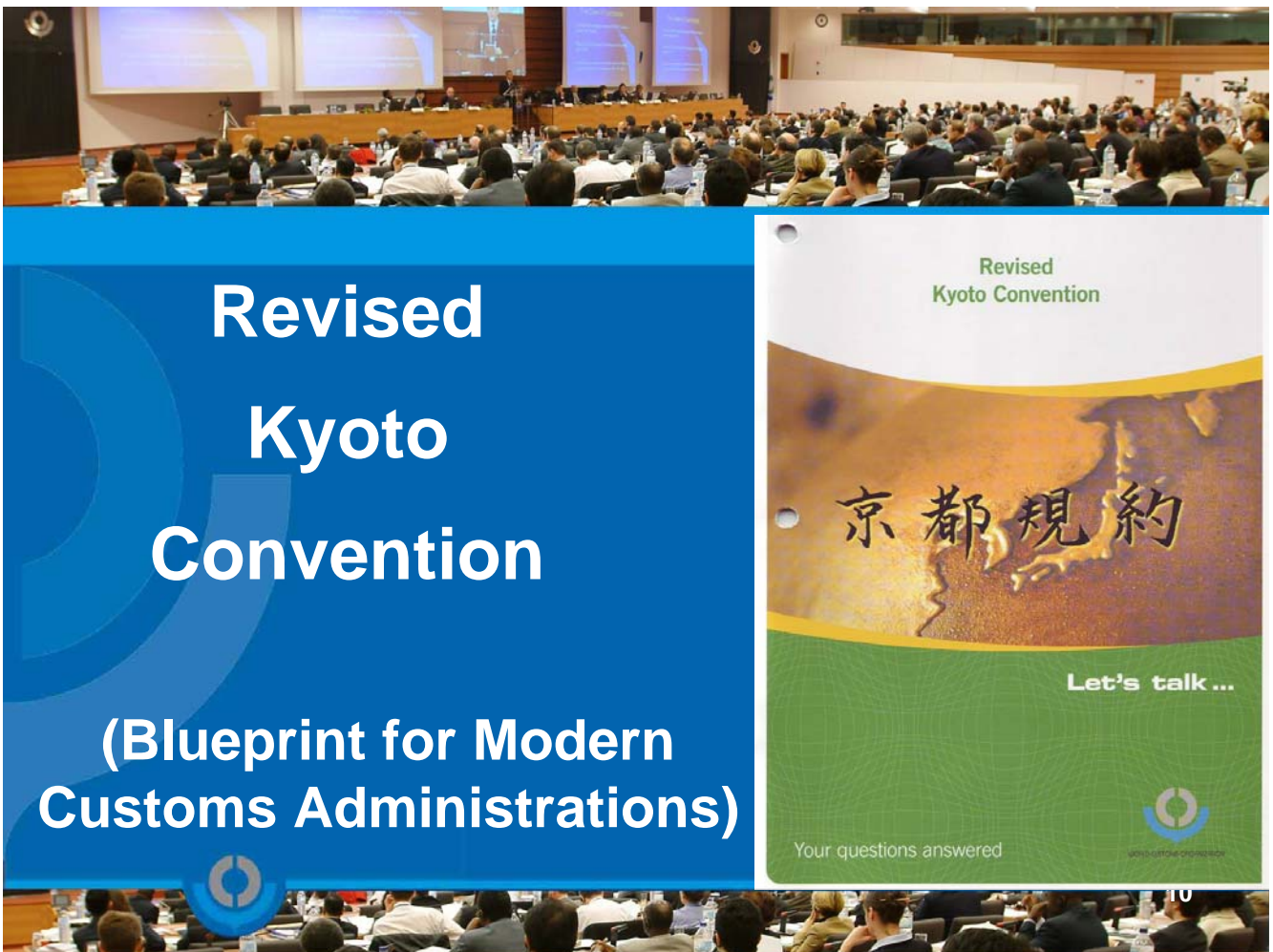


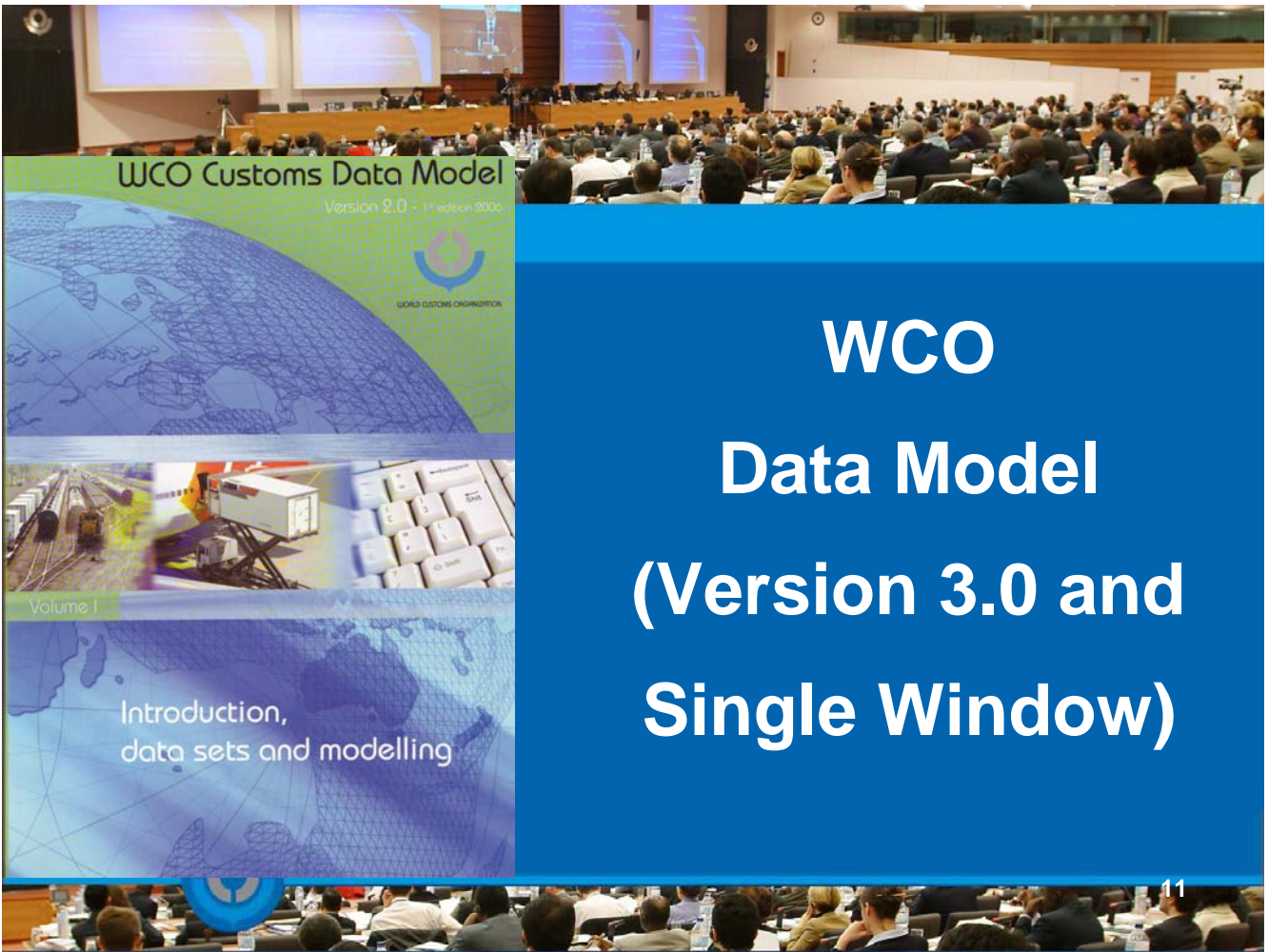


## WCO Key Instruments

- **Revised Kyoto Convention**
- **‘SAFE’ Framework of standards**
- **WCO Data Model & SW Compendium**
- **UCR**
- **Istanbul/ ATA Convention**
- **Time Release Study**
- **Harmonised System**
- **Integrated Supply Chain Management Guidelines**

8



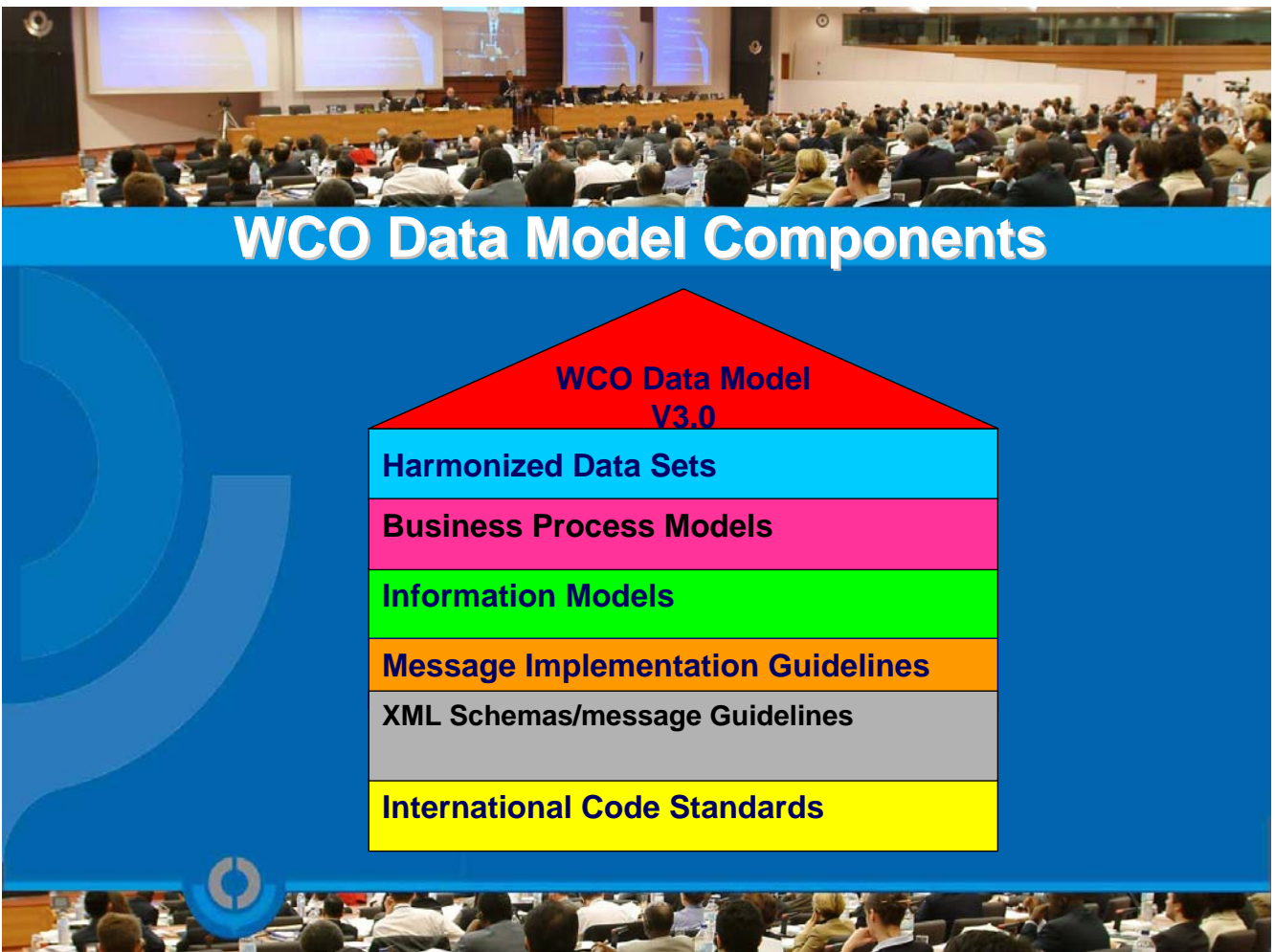


**WCO Customs Data Model**  
Version 2.0 - Edition 2005

**WCO**  
**Data Model**  
**(Version 3.0 and**  
**Single Window)**

Volume 1  
Introduction,  
data sets and modelling

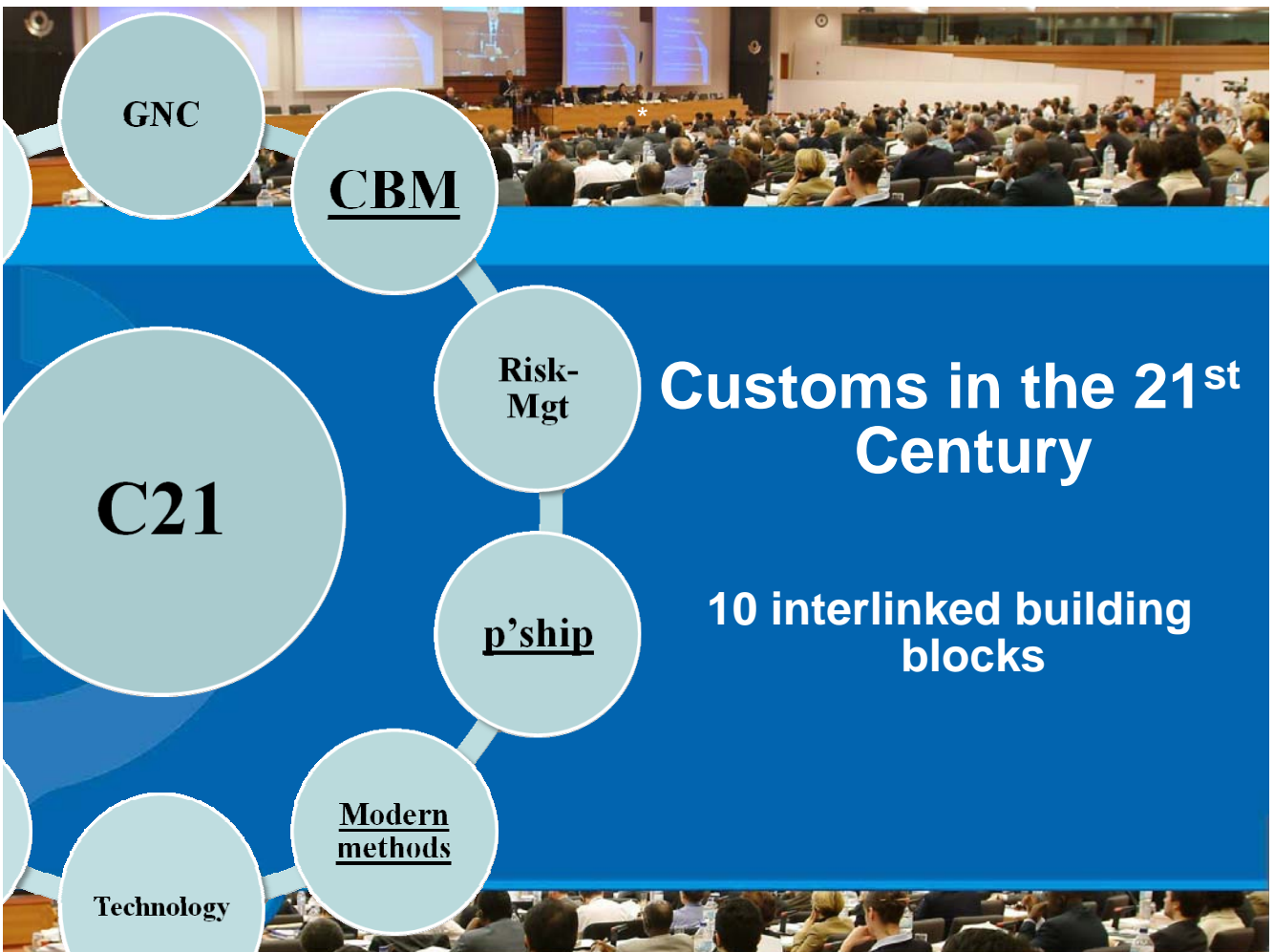
11



**WCO Data Model Components**

**WCO Data Model V3.0**

- Harmonized Data Sets**
- Business Process Models**
- Information Models**
- Message Implementation Guidelines**
- XML Schemas/message Guidelines**
- International Code Standards**





## CBM Definition

*“An approach to manage borders involving public agencies working across portfolio boundaries in a coordinated manner to achieve a shared goal thus providing a cohesive government response to the challenges of border management.”*

## Objective

Co-ordination, co-operation and communication both at national and international levels



## Customs and CBM

- Customs the key border agency with regard to the movement of goods
- Advanced in terms of exchanging information, using information technology, adopting risk management methodology
- Internationally organized (WCO, SCCP)
- Well placed to be the lead front-line agency







## Measures promoting CBM

**Implementation of WCO instruments create a solid foundation for CBM**

⊖ Time Release Study

⊖ RKC

⊖ SAFE FoS

⊖ WCO Data Model V3 & Single Window

**Horizontal approach to risk - joint risk management**

**Customs – Trade partnerships**



## Single Window

**a cross border ‘intelligent’ facility that allows parties in trade and transport to lodge standardized information with a single entry point to fulfil relevant import, export and transit regulatory requirements.**





# Features

1. Single point of data submission
2. Transmitted to appropriate authorities
3. Reuse data: submit once/use many times
4. Single point of response
5. Data standardization
6. Combined online transactional status
7. Online report capability/audit trail



Approval of the preferred projects

## Single Window Concept

- Collaboration mindset
- Stakeholder consultation
- Strategic planning
- Policy Convergence

Strategic Business Case for Single Window Approach

Approval of Strategic Business case

Business Case for the preferred Single Window Project(s)

## Single Window Initiative

- Political mandate
- Governance structures
- Program Management
- Project Formulation

## Single Window Environment

- Project Implementation
- SW Services Operational
- Change Management
- Performance management

Single Window Project Implementation Review & Feedback



# SW Data Harmonisation

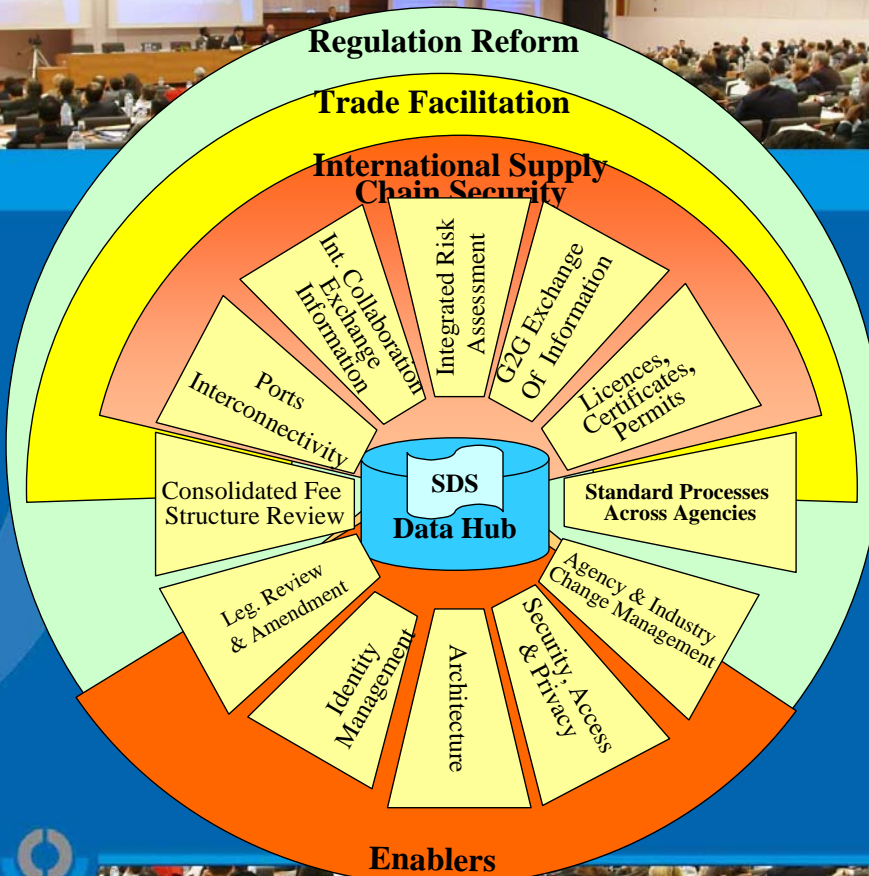
Essentially to do with “standards”

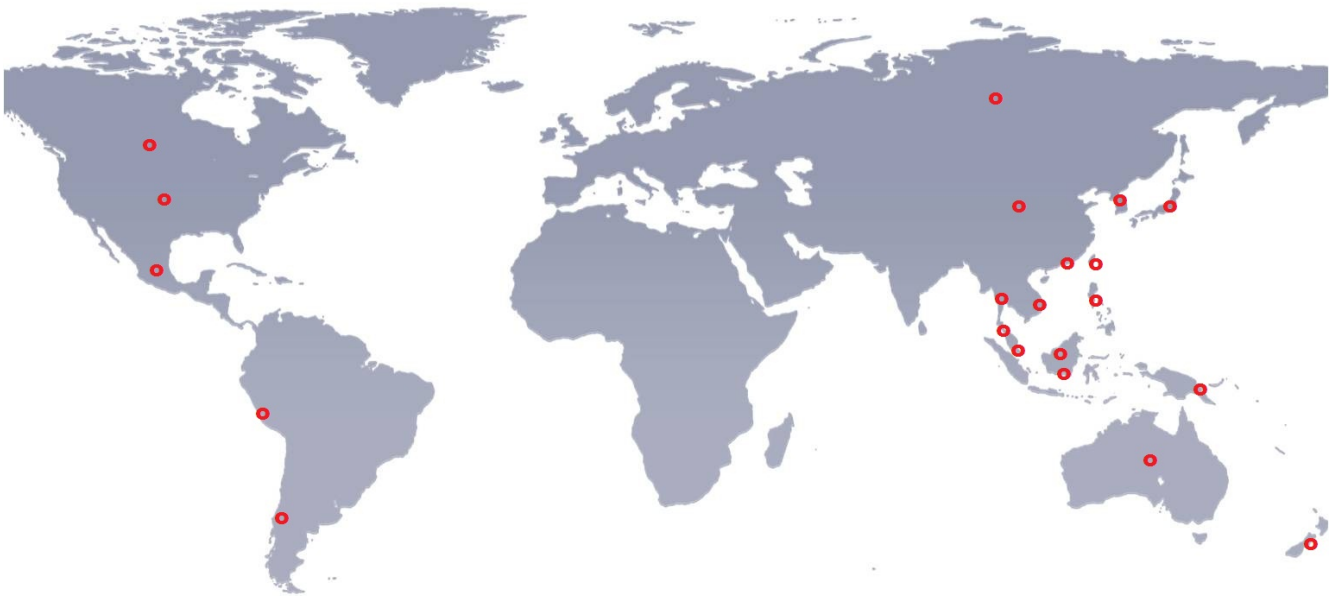
Aim is to reduce redundancy, duplication and ambiguity

Capture/Define/Analyze/Reconcile

WCO Data Harmonization Guidelines V2

UNTDDED & UN/CEFACT Rec. 34

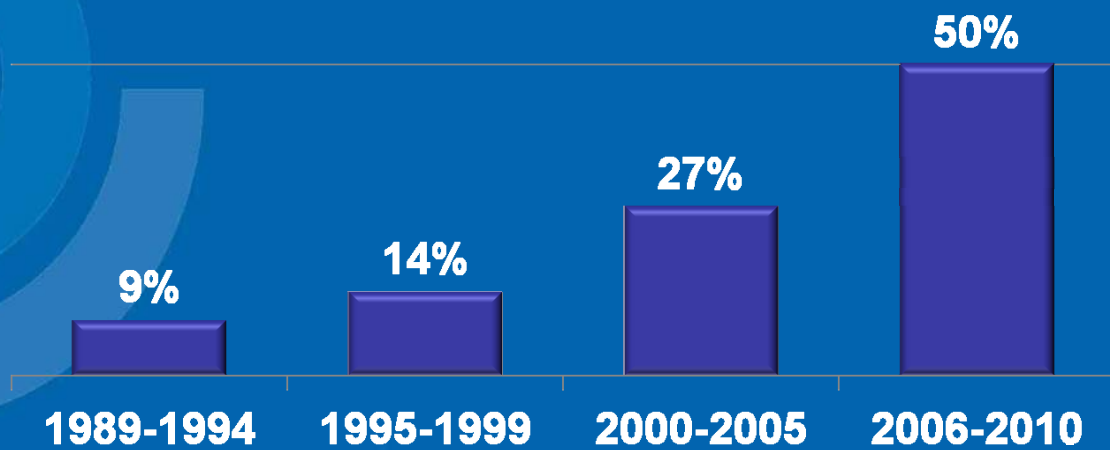




# "Thanks to 56 WCO Members"

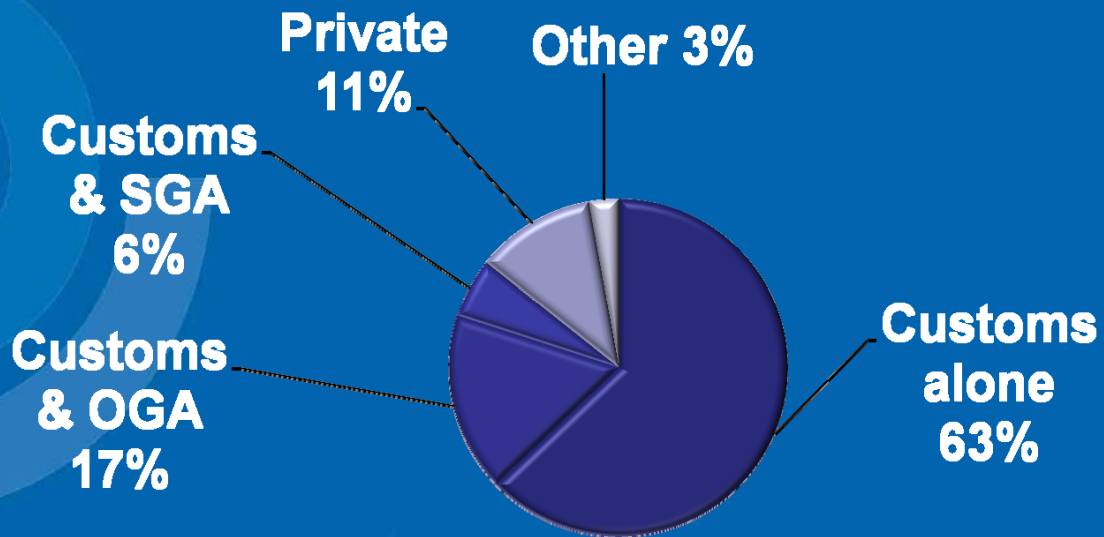


## Majority operational since 2000

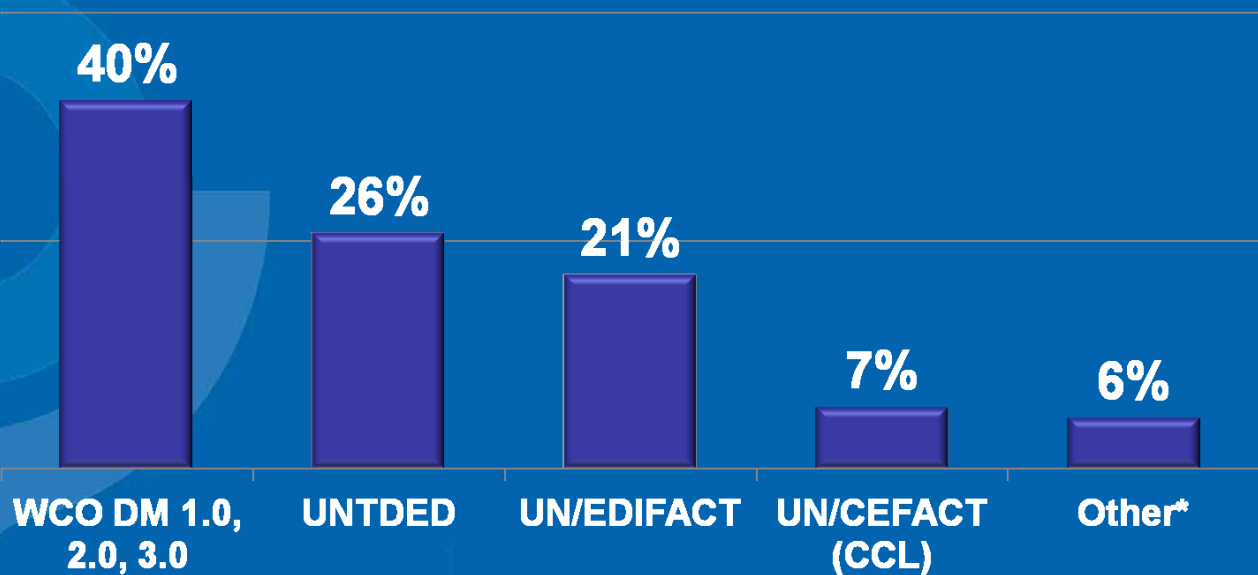




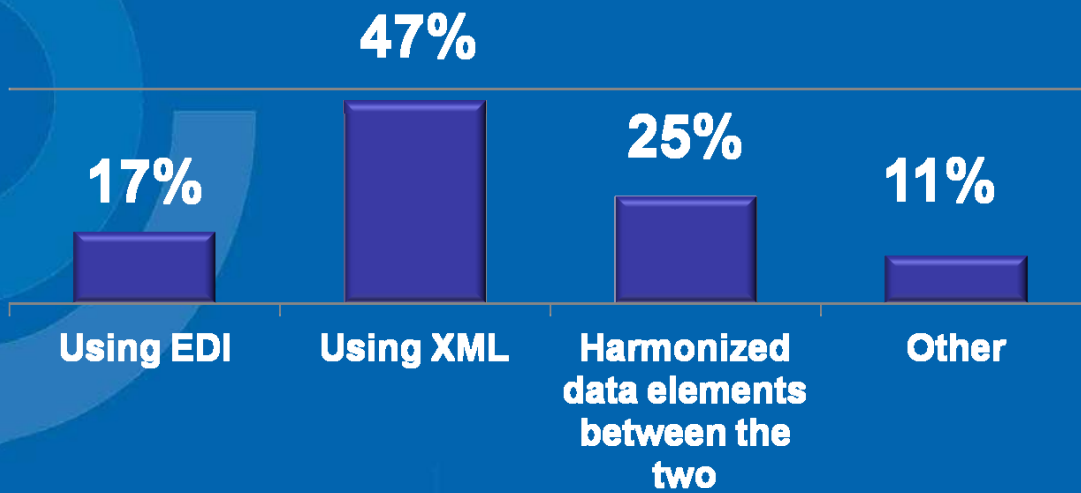
## Customs dominant SW provider



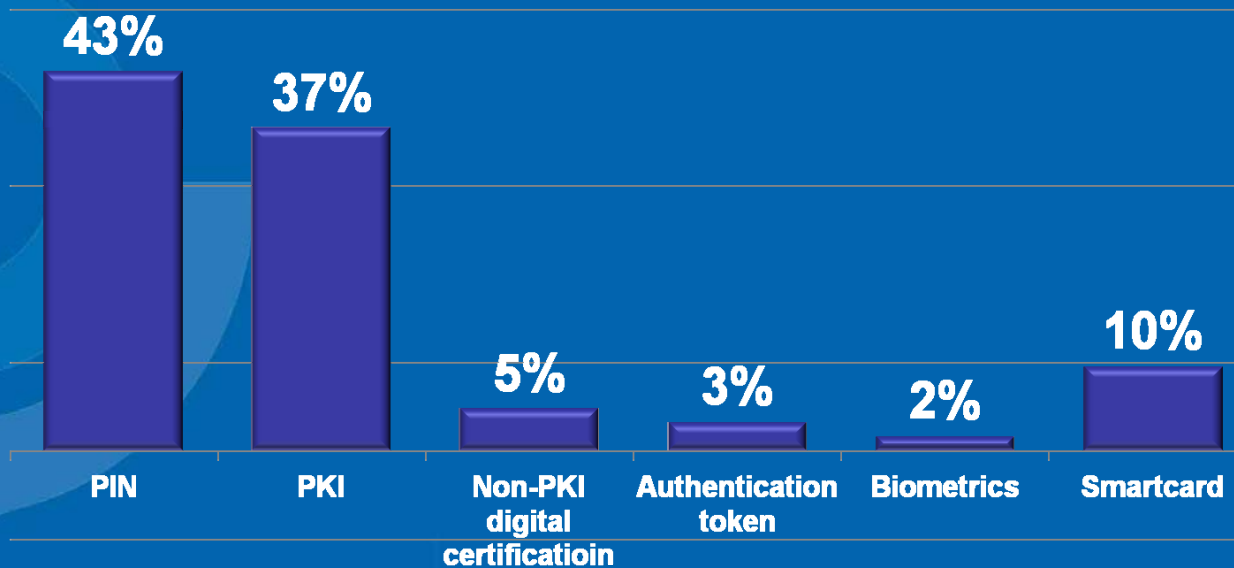
## WCO Data Model ahead of the pack



## XML preferred data exchange method



## PIN & PKI popular authentication tools





## **SW is advancing...**

- **Currently , non-SW systems are more common**
- **Majority SWs took off since 2000**
- **Members are either developing a new SW or upgrading existing SW systems**
- **Customs plays a major role in providing SW**
- **Most Customs run Computerized Customs clearance system**
- **Widespread practice of Electronically Reported Customs Declarations**



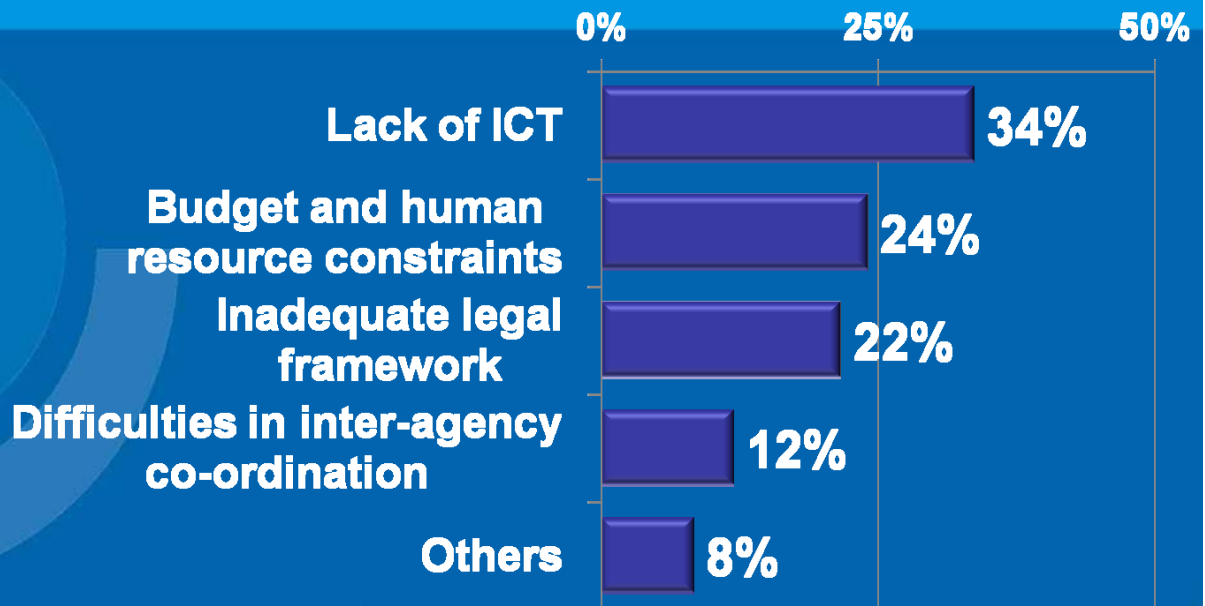
## **SW is advancing...**

- **Currently , non-SW systems are more common**
- **Majority SWs took off since 2000**
- **Members are either developing a new SW or upgrading existing SW systems**
- **Customs plays a major role in providing SW**
- **Most Customs run Computerized clearance system**
- **Widespread practice of Electronically Reported Customs Declarations**





# Challenges to Single Window



## Gareth Lewis

Telephone : +32 (0)2 209 9355

[gareth.lewis@wcoomd.org](mailto:gareth.lewis@wcoomd.org)

[www.wcoomd.org](http://www.wcoomd.org)

**WCO Publications Service**

[publications@wcoomd.org](mailto:publications@wcoomd.org)

**WCO Information Service**

[information@wcoomd.org](mailto:information@wcoomd.org)