

出國報告(出國類別：其他)

中華及長榮航空印尼雅加達場站作業檢查
出國報告書

服務機關：交通部民用航空局

姓名職稱：黃至男/ 技 正
羅夢雄/ 約聘人員

派赴國家：印尼

出國期間：101年5月1日至101年5月4日

報告日期：101年7月4日

目錄

壹、目的	2
貳、行程摘要	3
參、雅加達國際機場相關資訊摘要(如附錄)	4
肆、國際航線航路查核摘要	4
伍、雅加達國際機場場站設施查核摘要	5
陸、雅加達國際機場場站設施查核摘要	8
柒、綜合檢討及建議事項	12

壹、目的：

依據民用航空法第五十七條「民航局得派員檢查民用航空運輸業各項人員、設備，並督導其業務，民用航空運輸業者不得拒絕、規避或妨礙；如有缺失，應通知民用航空運輸業者限期改善。」本局對於我國境內民航各業亦遵照民航法之要求與授權來執行各項監理作業，以確保飛安。惟航空器之運行，並不限於我國境內，其目的地可能距出發地數千里之遙，抵達目的地後，需如同在我境內一樣，完成飛航與維護各項作業後起程回到國內機場，外站作業重要性等同於國內主基地。為了確保其作業水準可維繫最基本之飛安等級，實地查訪航空公司之各項外站作業，乃至於各項委託作業及其人員之適職性實有其必要性。

貳、行程摘要：

- 一、去程 101 年 5 月 1 日搭中華航空自桃園飛往印尼雅加達機場，
沿途執行駕駛艙航路檢查。
- 二、101 年 5 月 2-3 日執行中華及長榮航空場站設施查核。
- 三、回程 101 年 5 月 4 日搭中華航空自印尼雅加達機場飛往桃園，
沿途執行駕駛艙航路檢查。

參、雅加達國際機場相關資訊摘要：如附錄。

肆、國際航線航路查核摘要：

一、去程：桃園→雅加達

(一)日期：101年5月1日。

(二)航班：中華航空公司 CI-761 航班、A-330-300 型機，桃園→雅加達國際航線駕駛艙航路檢查。

(三)正駕駛機長吳宗禧、副駕駛何裕發，檢查組員及飛機各項證照均在有效期限內；航機、人員各項證照資料完整，組員任務提示完整，各項檢查均依規定實施，飛航操作正常。

二、回程：雅加達→桃園：

(一)日期：101年5月4日。

(二)航班：中華航空公司 CI-762 航班、A-340 型機，雅加達→桃園國際航線駕駛艙航路檢查。

(三)機長張禮元、副駕駛林得凱，檢查組員及飛機各項證照均在有效期限內；航機、人員各項證照資料完整，組員任務提示完整，各項檢查均依規定實施，飛航操作正常。

伍、中華航空於雅加達國際機場場站設施查核摘要：

一、中華航空於印尼—雅加達國際機場(CKG International Airport)

場站簡介：

(一)雅加達國際機場(CGK/WIII)，Time Lag (Hour From UTC) +7，共有 T1(國內航線)、T2(國際航線)、T3 (LCC 航空公司 Lion Air 及 Air Asia 兩家使用) 三個航站，離市區約 1 小時車程。

(二)機場計有 1 個塔台，2 條跑道，分別為： 07L 25R 07R 25L，跑道長寬為 11812 x 197ft / 3600.3 x 60.0m。

(三)機場 24 小時運作，尖峰時間為 0500L-0900L，班機起降頻繁，CI 班機常因 ATC 延誤，與 SUB/DPS/HLP/UPG 互為備降場站。

(四)中華航空公司目前使用國際航線第二航廈，旅客報到劃位櫃檯位於 E3 區安檢線正後方，櫃檯編號為 49-56。

(五)地勤代理公司名稱

Passenger/Cargo Service : Gapura

(PT. Gapura Angkasa)

Flight/Ramp Operation : Gapura

Security : Gapura

Catering : Aerofood ACS

Maintenance : GMF

Fueling : Pertamina

二、中華航空雅加達站場站設施檢查及機坪作業檢查：

(一)參與人員：

1. CAA 檢查人員：PMI 黃至男、AOI 羅夢雄。

2. CAL 陪同人員：雅加達站印尼分公司總經理歐陽應祈、機場經理詹旭堂、機務經理趙耕宇。

(二)組織與人員：

設總經理 1 人、機場設機場經理 1 人、督導員 1 人、運務員 6 人，合計 8 員。另設有機務經理及機務代理各 1 名，負責客機簽放。貨運設貨運經理 1 人、督導員 1 人、業務代表 2 人、運務員 2 人。

(三)機務、運務及貨運：航務、機坪裝載作業、客、貨運、地勤櫃檯報到、行李服務、登機、異常應變處理等均委由 Gapura 代理，機務由 GMF 代理、空廚由 Aerofood ACS 代理。安檢由機場當局負責。

(1)負責檢查滑行道與停機坪是否有可能造成 FOD 的異物。

(2)負責乘客登機、離機及上、卸貨作業。

(3)航機故障檢修及簽派。

(4)電報拍發及接收。

(四)手冊：檢查現有手冊符合手冊清單所列最新修訂版本，頁次完整，手冊管理情況良好。

(五)訓練(含複訓)：由總公司集中實施，部份由 E-learning 實施。

(六)設施及裝備、器材

1、目前客機多數由華航駐站機務簽放，少數由隨機機務簽放。

貨機則一律由 GMF 簽放。

2、維修手冊由電腦查閱。

3、庫房存放備用航材及特殊工具，檢查情況正常。

(七)機坪檢查：

1、中華雅加達站客機每週飛 17 航班客機 (A-330-300/A-340 客機，桃園-雅加達-桃園)。

2、101 年 5 月 2 日，CI-762 航班，航機文書及文件攜帶齊全，客艙 Emergency Exit Lights 及各項裝備檢查正常。

3、飛機機身外部檢查狀況正常。

4、旅客登機、加油、飛行前檢查等停機坪作業均正常。

5、使用人證書(AOC)/航機適航證/無線電台證/噪音證書/均置於駕駛艙中，各項證照均於有效期內。

陸、長榮航空於雅加達國際機場場站設施查核摘要：

一、長榮航空於印尼—雅加達國際機場(CKG International Airport)

場站簡介：

1. EVA AIR：

- (1) EVA AIR check-in counter located in Terminal D, counters 9 to 16
- (2) 2 Contracted EVA AIR lounges:
- (3) Pura Indah Lounge & Premier Lounge located at Terminal D
- (4) Airport Tax: IDR150,000.- is paid at check-in counter
- (5) X-ray & Security check is located before check-in area and before boarding gates. Liquid, Gel & Aerosol is limited to 100ml/item (max 1lt/pax) (eff:31Mar07).
- (6) Free shuttle bus between terminals every 10minutes standby at departure level
- (7) Porter Fee: IDR5,000/piece
- (8) Left Baggage Service: available at arrival level.
charge vary according to weight as follow:
 - ≥ 10kg IDR20,000/day calendar
 - ≥ 20kg IDR30,000/day calendar
 - > 30kg IDR40,000/day calendar

(9)Banks & ATM services available at Departure & Arrival Levels.

(10)Taxi, Limo, Airport Bus (Damri), Food Corner, Public Telephone

& other Public services are available at Passenger Terminal

(opening hours vary starts from 6:00am to 10.00pm)

2. GROUND HANDLING Company at SOEKARNO-HATTA

AIRPORT (CGK) JAKARTA, INDONESIA

(1)GHA-PT. JAS:

- Passenger & Baggage Handling, Lounge
- Operation, Load control & Ramp Handling
- Cargo & Warehouse Handling

(2)GHA-ENGINEERING/PT. JAES:

- Maintenance & Engineering Handling

(3)CATERING COMPANY/ACS:

- In flight Catering Service

(4)FUEL COMPANY:

- PERTAMINA OIL & GAS Company

二、長榮航空雅加達站場站設施檢查及機坪作業檢查：

(一)參與人員：

1. CAA 檢查人員：PMI 黃至男、AOI 羅夢雄。
2. EVA 陪同人員：雅加達站站主任林勝三。

(二)組織與人員：

設督導員 5 人、運務員 6 人，合計 12 員。

(三)機務、運務及貨運：航務、機務、機坪裝載作業、空廚、客、貨運、地勤櫃檯報到、行李服務、安檢、登機、異常應變處理等均委由 JAS 公司(Jasa Angkasa Semesta)代理所有業務：

- (1)負責檢查滑行道與停機坪是否有可能造成 FOD 的異物。
- (2)負責乘客登機、離機及上、卸貨作業。
- (3)航機故障檢修及簽派。
- (4)電報拍發及接收。

(四)手冊：檢查現有手冊符合手冊清單所列最新修訂版本，頁次完整，手冊管理情況良好。

(五)訓練：訓練（含複訓）均由總公司集中實施。

(六)設施及裝備、器材

- 1、該站目前每隔一天飛一航班，目前適航簽放為隨機簽放。
- 2、維修手冊可由電腦查閱。

3、庫房存放備用航材及特殊工具，檢查情況正常。

(七)機坪檢查：

- 1、長榮雅加達站客機每週飛 6 航班客機 (B-777-300ER 客機，桃園-雅加達-桃園)。
- 2、101 年 5 月 3 日，BR-238 航班，航機文書及文件攜帶齊全，客艙 Emergency Exit Lights 及各項裝備檢查正常。
- 3、飛機機身外部檢查狀況正常。
- 4、旅客登機、加油、飛行前檢查等停機坪作業均正常。
- 5、使用人證書(AOC)/航機適航證/無線電台證/噪音證書/均置於駕駛艙中，各項證照均於有效期內。
- 6、本次機坪檢查無任何違反規定情形。

柒、綜合檢討及建議事項：

一、中華及長榮航空公司及與當地地勤代理所訂定之地勤合約

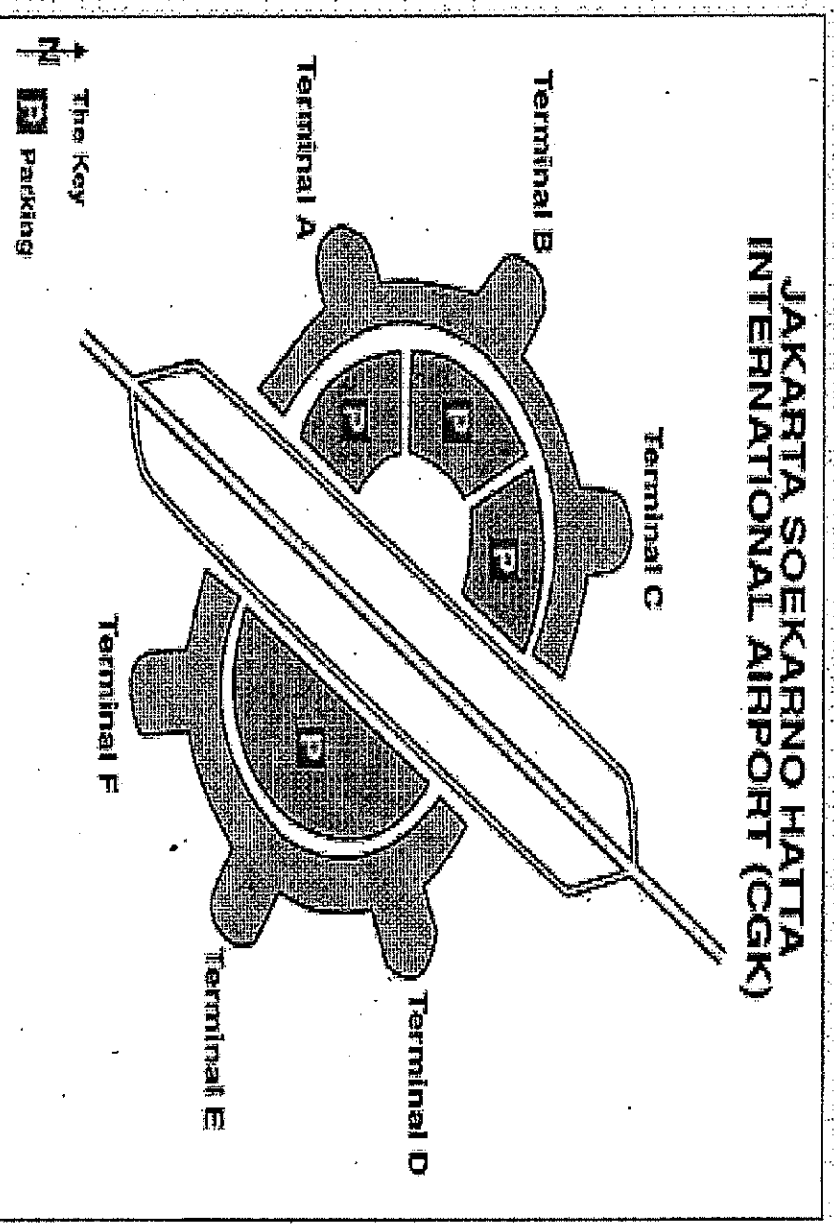
(STANDARD GROUND HANDLING AGREEMENT)在簽署部分雙方均完成簽字。

二、長榮航空地勤代理公司航務作業管制中心異常情況時聯絡電話及

人員名冊，因以手寫修訂最新資料，文字已較為不清楚，為避免於緊急通知長榮航空相關人員時無法聯絡，已建議該代理公司改善。

三、本次雅加達外站檢查一般情況良好，無違反規定發現。

SOEKARNO - HATTA AIRPORT, CGK ILLUSTRATION



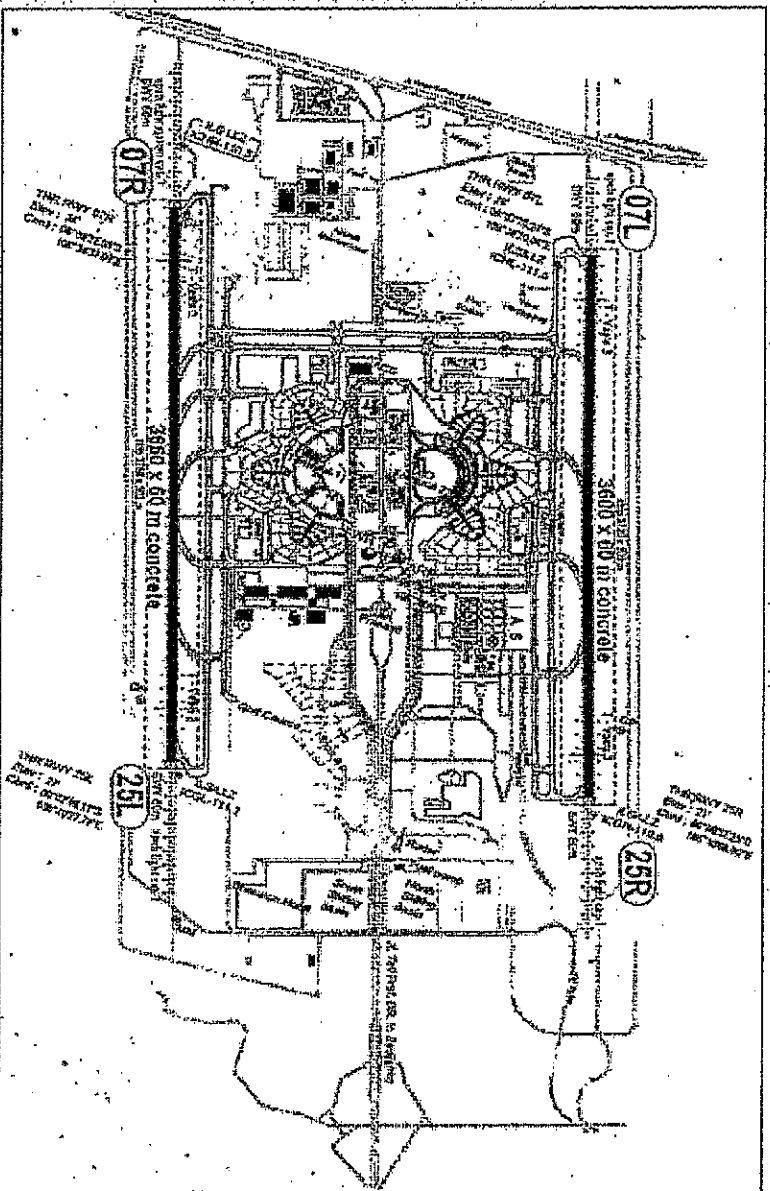
SOEKARNO-HATTA AIRPORT (CGK) JAKARTA - INDONESIA



CGK Station Profile; February 2012

Prepared by CGIKKPBH/Melty H.

MAP SOEKARNO-HATTA AIRPORT



CGK Station Profile, February 2012

Prepared by CGK/PR/Melty H

About the Airport

Name of Airport : SOEKARNO-HATTA INTERNATIONAL
Runway I (North) : 07L/25R 3,600m length
Runway II (South) : 07R/25L 3,660m length
Coordinate : LAT.06° 7' 32" LONG.106° 39' 40"
Elevation AMSL : 32ft/10m
Distance from city : 19,45KM/10,475NM NW from Jakarta

Management : PT. (Persero) ANGKASA PURA II
Address : Jakarta International Airport
SOEKARNO-HATTA, Jakarta 19101

Telephone : 62-21-550 7300 (office hours)
62-21-550 5174 (24H)
62-21-550 5523 (24H)
62-21-550 6823

Facsimile :
E-mail : kacabbsbh@angkasapura2.co.id
Telex : 43585 PBSH IA

Airport operational : 24 hours

SOEKARNO - HATTA AIRPORT, CGK



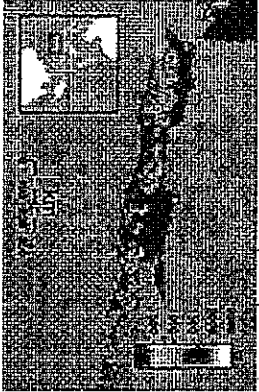
GRAND DESIGN 2014

CGK Station Profile, February 2012

Prepared by CGK/KBPR/Melty H.

Soekarno-Hatta International Airport

Map



CGK

Location within Java

Direction	Length		Surface
	ft	m	
07R/25L	11,500	3,865	Paved
07L/25R	12,345	3,998	Paved

Soekarno-Hatta International Airport
(Indonesian: *Bandar Udara Internasional Soekarno-Hatta*)

(IATA: **CGK**, ICAO: **WIII**), popularly abbreviated **SHIA** ^[1] or **Soetta** ^[2] is the main airport serving the greater Jakarta area on the island of Java, Indonesia.

The airport is named after the first President of Indonesia, Soekarno, and the first vice-president, Mohammad Hatta.

The airport's IATA code, CGK, originates from Cengkareng, a district northwest of the city, and it is often called **Cengkareng Airport** by Indonesians.

Located about 20 km west of Jakarta, in Tangerang, Banten, Soekarno-Hatta Airport began to operate in 1985, replacing the former Kemayoran Airport (domestic flights) in Central Jakarta, and Halim Perdanakusuma International Airport in East Jakarta. ^[3]

Phase of Soekarno-Hatta Airport

Phases of Soekarno-Hatta International Airport Project

Phase	Year	Description	Status
Phase 1	1985	Built Terminal 1 that can handle 9 million passengers per annum	Finished
	1992	Built Terminal 2 that can handle 18 million passengers per annum	Finished
Phase 2	2008	Built Terminal 3 phase 1 that can handle 22 million passengers per annum	Finished
		Fully built Terminal 3 that can handle 43 million passengers per annum	In progress
Phase 3	2013	Revitalization Terminal 2 that can handle 53 passengers per annum,	Pending
		Fully built integrated building	Pending
		To build Terminal 4	Pending
	2014	Revitalization Terminal 1 that can handle 62 million passengers per annum	Pending

Plans

In the newest masterplan Soekarno-Hatta International Airport will increase the capacity from current capacity 22 million passengers per annum to become 62 million per annum in 2014. The airport will use new theme "Modern Airport With Traditional Flavour" for the project. Angkasa Pura II as the operator designed Soekarno-Hatta Airport will have 3 passengers terminal, 1 new freight terminal (cargo village) and an integrated building in 2014.

Also there will be increase apron capacity from current 125 airplanes to become 174 airplanes. Airport train from Manggarai Station and People Mover System designed for ground transportation from/to and inside the airport. Angkasa Pura II will spend Rp. 11.7 trillion (\$1.36 billion) to change the airport into a 'world class' airport which will be called 'aerotropolis' by 2014. In the first stage Terminal 3 will be expanded and thereafter Terminal 1 and Terminal 2 will be integrated with green walls and the airport will have a convention hall, shopping center, hotel, playground, recreational facilities and parking area for 20,000 vehicles. ^[11]

To anticipate a surge of passenger numbers, at least a ten percent increase each year, the government is preparing to lay down runway number 3. This was targeted to be completed in 2017. If the airport has 3 runways, the service capacity will up to 623,420 movements per year and it will be able to anticipate growth at least until 2030. The expansion will use about 1,000 hectares from 10 villages in the Teluk Naga and Kosambi subdistricts. ^{[12][13]} The expansion plan has been rejected by Tangerang Municipal Government due to residents living around the airport don't get a chance to earn income for their family.

The local government offered another location such as in Balaraja, but Angkasa Pura II corporate secretary said that building a new airport would not be an easy task, as it requires thorough study. ^[14]

Due to lack of space to make the third runway at Soekarno-Hatta International Airport, the government plans to build a new airport in 2013 around Gikarang and Karawang. The airport would be integrated with the planned Ciamaya International Seaport in Karawang. Feasibility study is still running and will be completed at the end of 2011 or early 2012. ^[15]

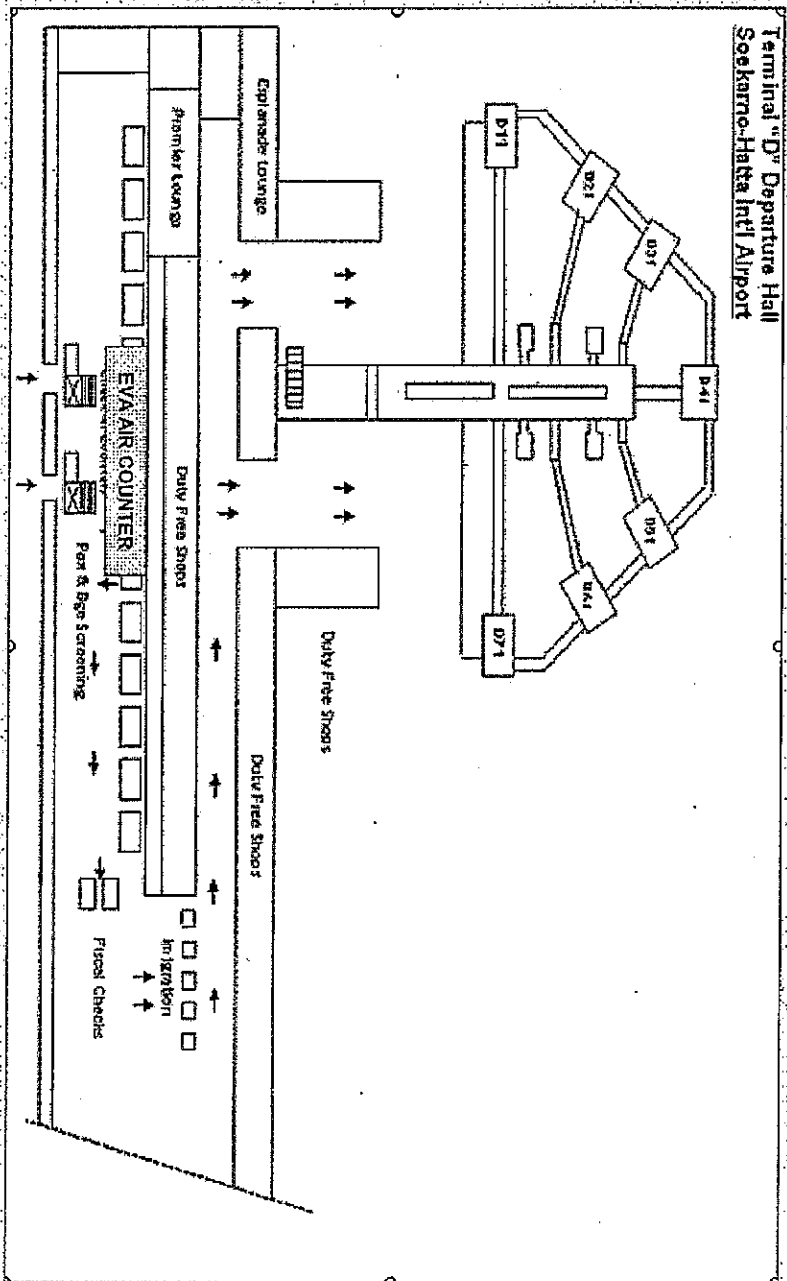
Railway Line

In July 2011, the government has assigned PT Kereta Api to establish a railway that connect Manggarai station to the Airport via Tangerang with cost Rp.2.25 trillion (\$250 million).

During press conference in December 2011, PT KAI is optimistic that railway line will be operational by the end of 2013. 7-kilometer section of track will construct to connect the commuter line station in Tangerang and the airport besides to use siding system which the track section connected to a main line that allows for faster trains to overtakes slower services (likes passing lane of road).

The existing single-track commuter line between Manggarai and Tanah Tinggi will be expanded to double-track line in 2014. The track as commuter line will connect Manggarai station, Sudirman, Tanah Abang, Duri, Grogol, Kalideres, Tanah Tinggi and Soekarno Hatta International Airport. The government also offer a 33-kilometer express line between Manggarai station and the airport via Angke and Pluit to investor as Public Private Partnership (PPP)

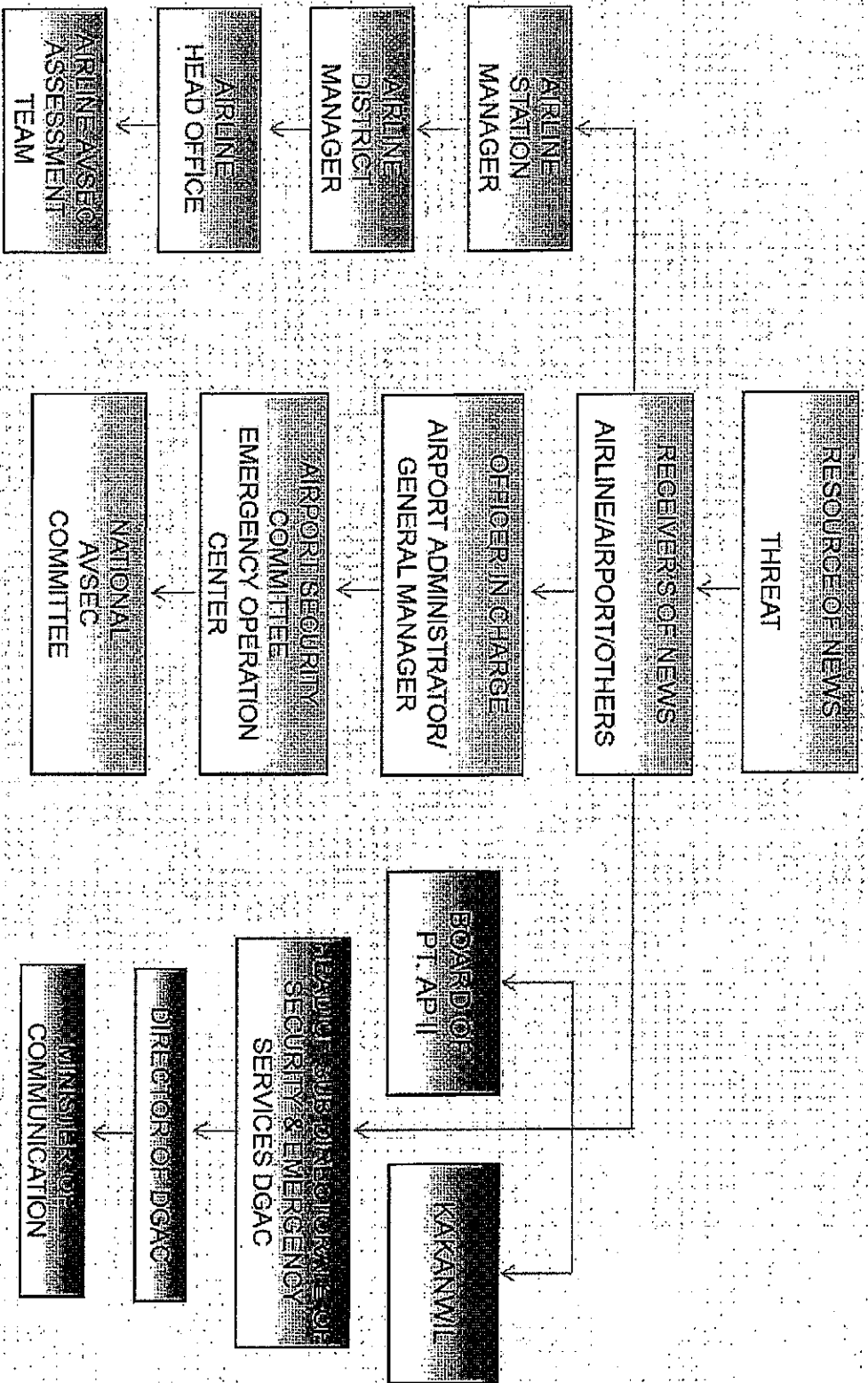
Terminal 2D Departure Level



AIRPORT INFORMATION

- EVA AIR check-in counter located in Terminal D, counters 9 to 16
- 2 Contracted EVA AIR lounges:
 - Pura Indah Lounge & Premier Lounge located at Terminal D
- Airport Tax: IDR150,000.- is paid at check-in counter
- X-ray & Security check is located before check-in area and before boarding gates. Liquid, Gel & Aerosol is limited to 100ml/item (max 1lt/pax) (eff. 31Mar07).
- Free shuttle bus between terminals every 10minutes standby at departure level
- Porter Fee: IDR5,000/piece
- Left Baggage Service: available at arrival level.
 - charge vary according to weight as follow:
 - ≥ 10kg IDR20,000/day calendar
 - ≥ 20kg IDR30,000/day calendar
 - > 30kg IDR40,000/day calendar
- Banks & ATM services available at Departure & Arrival Levels.
- Taxi, Limo, Airport Bus (Darmir), Food Corner, Public Telephone & other Public services are available at Passenger Terminal
(opening hours vary starts from 6:00am to 10.00pm)

Communication Line of Emergency CONTINGENCY PLAN by Port Authority



SOEKARNO-HATTA AIRPORT (CGK)
JAKARTA

Customs

Immigration

Quarantine

SOEKARNO-HATTA AIRPORT (CGK) CUSTOMS

- EACH ARRIVING PASSENGER & CREW MUST SUBMIT CUSTOMS DECLARATION FORM
- ANY UNDECLARED DUTY TAX GOODS WILL BE CONSIDERED AS VIOLATION AND SUBJECT TO ADMINISTRATIVE FINE.
- SEVERE PUNISHMENT FOR DRUG TRAFFICKERS.

GOODS TO DECLARE (IMPORT):

- GOODS OBTAINED OVERSEAS EXCEEDING USD50/CREW OR USD250/PERSON OR USD1,000/FAMILY
- MORE THAN 200CIGARETTES OR 25CIGARS OR 100GRAM SLICED TOBACCO OR 1LT LIQUER
- ANIMALS, FISH & PLANTS INCLUDING THEIR PRODUCTS, FRESH FRUITS
- NARCOTIC DRUGS, PSYCHOTROPIC SUBSTANCES, FIREARMS, WEAPON, AMMUNITION, EXPLOSIVES, PORNOGRAPHY
- CINEMATOGRAPHIC FILMS, PRE-RECORDED VIDEO TAPES, VIDEO LASER DISCS OR RECORDED
- BANK NOTES DENOMINATED IN RUPIAH MORE THAN 100MILLION PER PERSON

SOEKARNO-HATTA AIRPORT (CGK) IMMIGRATION

TERMINAL D, DEPARTURE: 62-21-550 7233
TERMINAL D, ARRIVAL: 62-21-550 6056

VISA ON ARRIVAL:

- Please refer to TIM manual/TIMATIC for nationals for VOA eligible
- Holding confirmed ticket before expiration of VOA validity (30days) & valid travel document
- Holding at least USD 1,000.- or a valid credit card
- Fee is USD25.- Extension possible for max 30days

OVERSTAY FEE: IDR200,000.-/DAY CALENDAR

IMPORTANT NOTICE:

- PASSPORT MUST BE VALID AT LEAST SIX (6) MONTHS FROM DATE OF ARRIVAL.
- PASSPORT MUST HAVE SPACE FOR IMMIGRATION STAMP (ARRIVAL & DEPARTURE).
- PASSPORT MUST HAVE PAGE AVAILABLE TO STICK VOA STICKER.
- HOLDING CONFIRMED RETURN TICKET WITHIN VALIDATION OF VISA ON ARRIVAL
- NATIONALS OF INDONESIAN IS NO MORE REQUIRED TO FILL IN IMMIGRATION CARD, EFFECTIVE 04 JANUARY 2012

FAILED TO COMPLY THIS REQUIREMENT MAY RESULT IN IMMEDIATE DEPORTATION

SOEKARNO-HATTA AIRPORT (CGK)

QUARANTINE

PLANT QUARANTINE: 62-21-550 7930
ANIMAL QUARANTINE: 62-21-550 7931
FISH QUARANTINE: 62-21-550 7932

PETS:

- IMPORT OF PETS IS PERMITTED, EXCEPT TO BALI
- IMPORT PERMIT ISSUED BY DIRECTORATE GENERAL OF LIVESTOCK SERVICE HEALTH & RABIES VACCINATION CERTIFICATE ISSUED BY AN AUTHORIZED GOVERNMENT VETERINARIAN IN THE COUNTRY OF ORIGIN
- VACCINATION IS PERFORMED AT LEAST 30DAYS PRIOR TO EXPORTATION (NOT MORE THAN 1YEAR)
- PETS MUST BE 90DAYS OLD AT TIME OF EXPORTATION
- MUST NOT BE PREGNANT OR IN BREAST FEEDING CONDITION
- UPON ARRIVAL, SHALL BE SUBJECT TO QUARANTINE MEASURES FOR AT LEAST 14DAYS
- SHIPMENT MUST BE REPORTED TO ANIMAL QUARANTINE OFFICER AT CGK AIRPORT ATLEAST 2DAYS PRIOR TO ARRIVAL CONTACT TO +62-21-5507931 OR FAX TO +62-21-5500623

FOR FURTHER INFORMATION, CONTACT THE DIRECTORATE GENERAL OF LIVESTOCK, DIRECTORATE OF ANIMAL HEALTH AT GEDUNG C, LANTAI 9, JL. HARSONO RM. RAGUNAN, JAKARTA SELATAN, PHONE: 62-21-781 0090/781 5783, EMAIL: www.ditjenhik.go.id