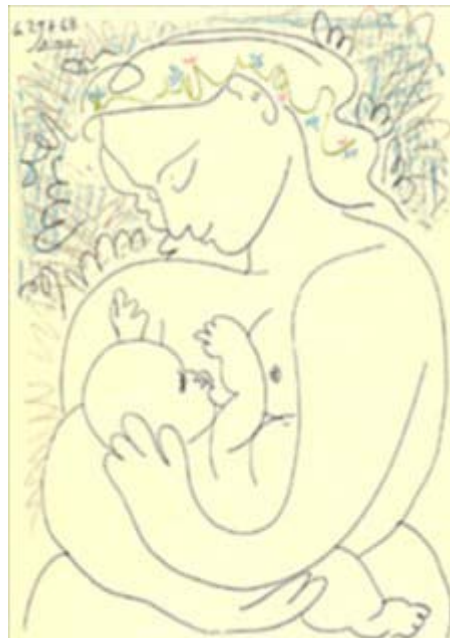




**WORLD HEALTH ORGANIZATION**

---

**SEVENTH MEETING OF BFHI COORDINATORS  
from  
INDUSTRIALIZED COUNTRIES, EASTERN EUROPE AND  
THE COMMONWEALTH OF INDEPENDENT STATES (CEE/CIS)**



**PROVISIONAL PROGRAMME**

**June 5 – 7, 2012**

Domus & Medicus  
Pilestredet Park 7  
(entrance from Stensberggata)  
0176 OSLO  
NORWAY

**OBJECTIVES**

- To stimulate wider adoption and expansion of the Baby-friendly best practice standards throughout industrialized countries through;
  - Sharing and updating knowledge and experiences of BFI good practices among coordinators and focal points in developed countries;
  - Strengthening the network of coordinators.
- To provide mutual support between BFI in industrialized countries;
- To discuss actions that may help to implement, accelerate and sustain the implementation of BFI and related international recommendations and protocols such as the Global Strategy for Infant and Young Child Feeding, Innocenti Declarations (1990 and 2005) and the EU Blueprint for Action.
- To share updates on recent scientific evidence and research findings on IYCF and BFI
- To share experiences and good practices related to BFI, from BFHI to BFI in the Community (BFCI), to NICUs or even to Universities, and others

**EXPECTED OUTCOMES**

- Up-to-date information on Baby Friendly Initiative (BFI) implementation in industrialized countries, including
  - Baby Friendly Hospital Initiative (BFHI)
  - Baby Friendly Community Initiative (BFCI)
  - Baby Friendly Initiative in NICU
  - Baby Friendly Initiative expansion
- Increased support to Baby Friendly Initiative in the Industrialized World and the work of the BFI coordinators.
- Agreement on common stand to address constraints to BFI implementation in industrialized countries.
- Agreement on the way forward.

Tuesday 5 June, 2012			
TIMETABLE	TOPICS	SPEAKER	ROOM
7.30 - 08:15	<b>0. REGISTRATION</b>		
8:15 - 9:15	<b>1. COMMENCEMENT, UPDATES AND BFI IMPLEMENTATION</b>		
8:15 - 8:30	1.1	Welcome and opening addresses	<b>Anne Baerug</b> , Nutritionist, MSc, leader of the Norwegian Resource Centre for Breastfeeding.
8:30-8:40	1.2	Welcome from WHO and UNICEF representatives	<b>Carmen Casanovas</b> . WHO, NHD Coordinator & <b>Kim Gabrielli</b> (Political Advisor) UNICEF
8:40-8:50	1.3	Objectives and outcomes of the meeting, presentation of chairperson and rapporteurs, Explanation of Administrative arrangements and agenda	<b>Mette Ness Hansen</b> . Norway BFHI Coordinator
8:50-9:05	1.4	Introduction of the coordinating group and the participants	<b>All participants</b>
9:05-9:30	<b>2. WHAT'S NEW IN THE AREA OF INFANT AND YOUNG CHILD FEEDING?</b>		
9:05-9:30	2.1	WHO update on new developments and BFI	<b>Carmen Casanovas</b> . WHO, NHD Coordinator.
9.30-10.00	<b>COFFEE BREAK</b>		
10.00-10.50	2.2	C-section. Breastfeeding during and right after the operation. How did we do it? How did it go? A follow up.	<b>Gro Nylander</b> MD, Dr.PhD, senior consultant. Dept. of obstetrics OUS and Norwegian Resource Centre for Breastfeeding.
10.50-12.15	<b>3. IMPLEMENTING THE BFHI</b>		
10.50-11.20	3.1	<b>Summary Report</b> on country-level implementation of the BFHI - results of the Questionnaire	<b>Julie Stufkens</b> . New Zealand BFI Coordinator
11.10-11.30		Questions and answers	
11.30-12.15	3.2	<b>Country presentations:</b> BFI advances and experiences	
11.30-11.40		The outcome of the national breastfeeding study related to BFH	Maryse Arendt (Luxembourg)
11.40-11.50		Standard Guidelines for BF data collection	Kristina Lofgren (France)
11.50-12.00		Japanese earthquake and effect on BFHI	S.Nagayama &M. Nagayama
12.00-12.15		Questions	All participants
12.15-13.30	<b>LUNCH</b>		
13.30-13.40		<b>Working Groups</b> Introduction	
13.40-14.40	3.3	<b>Working Groups on BFHI implementation</b>	
		BFHI Management: Issues in different countries and situations	Group 1
		BFHI Assessment : issues and solutions	Group 2
		BFHI Monitoring issues and solutions	Group 3
		BFHI Reassessment: issues and solutions	Group 4
14.40- 15.00		<b>Working Groups presentations</b> and plenary discussion. Recommendations	Plenary (max. 3 min/group)

15:00-15:20	<b>TEA BREAK</b>		
15:20-16:30	4	<b>QUALITY IN BABY FRIENDLY INITIATIVES: PLENARY (15MINUTES EACH TO PRESENT)</b>	
15:20-15:35	4.1	Assessors: Training, assessment and counselling skills, evaluation.	Olha Shlemkevych and Lidiya Romanenko (Ukraine)
15:35-15:50	4.2	Step by Step assessments	Anne Woods (UK)
15:50-16:05	4.3	Monitoring and reassessment	Trish MacEnroe (USA)
16:05-16:20		Questions and discussion by the group	Plenary
16:20-16:45	<b>CLOSURE DAY 1</b>		
17.45	<b>RECEPTION IN OSLO RÅDHUS (Note: formal attire)</b>		

Wednesday 6 June, 2012			
TIMETABLE	TOPICS	SPEAKER	ROOM
08:00–08:15	<b>REVIEW OF DAY 1</b>		
08:15 – 9:15	<b>5. BABY FRIENDLY COMMUNITY INITIATIVE. EXPERIENCES FROM COUNTRIES (PLENARY)</b>		
8:15 – 8:30	5.1 "Breastfeeding is a public health issue for all and not just a personal choice for the mother"	Ragnhild Alquist, RN,MPH, IBCLC (Norway)	
8:30 - 8:45	5.2 Integrating the Seven Points for Community with the 10 Steps for Hospitals. The Canadian Experience.	Canadian Team	
8.45 – 9.00	5.3 BFCI: Implementation, standards, process and impact in New Zealand	Julie Stufkens (NZ)	
9.00 - 9:15	Questions		
9:15 – 10:05	5.4 <b>Working groups on BFCI (Community Initiative)</b>		
	Criteria for Baby-Friendly in Community Health Services	Group 1	
	Assessment in BFCI (criteria, how to do it, costs) sharing issues and solutions	Group 2	
	Training issues in BFCI (Trainers, trainees, costs)	Group 3	
	Information, Resources and Education materials to support BFCI sharing and discussion	Group 4	
10:05-10:30	<b>Working Groups presentations and plenary discussion</b>	(feedback max 3 minutes/group)	
<b>10.30–10:45</b>	<b>COFFEE BREAK</b>		
10:45-11:30	2.3. The mechanics of Breastfeeding revisited	Mike Wooldridge	
11:30--12:15	<b>6. EXPANDING BFHI BEYOND THE MATERNITY TO NEONATAL INTENSIVE CARE UNITS</b>		
11.30-11.40	6.1 Development of NICU standards	Nordic Group	
11.40-11:50	6.2 Criteria and minimum standards for NICU	Nordic Group	
11:50-12:00	6.3 Assessment tools for NICU	Nordic Group	
12:00-12.15	Plenary discussion and Questions	Whole group	
12:15–13:15	<b>Group Photo (bring your camera). Then LUNCH</b>		
13.15-13.45	<b>Leaving for Seminar at Rikshospitalet: Tram 17 or 18</b>		
14:00–18:00	<b>7. SEMINAR IN RIKSHOSPITALET STORE AUDITORIUM: Honorary symposium on lactation and breastfeeding celebrating Gro Nylander MD, Dr. PhD</b>		
	Breastfeeding support to socially deprived groups	Mike Woolridge, MD, BSc, PhD, University of Leeds, UK	
	Human milk fights infections, does it fight cancer too?	Tore Gutteberg Professor, MD, PhD, University of Tromsø	
	Oxytocin – a key to understanding the effect of breastfeeding on bonding and stress	Kerstin Uvnäs Moberg Professor, MD, PhD, University of Uppsala, Sweden	
	Breastfeeding in a global perspective	Thorkild Tylleskär Professor, MA, MD, PhD, University of Bergen	
	From 16:00pm - following the scientific programme - anyone wishing to honour Gro is welcome to join in for entertainment, speeches, and musical greetings. Light refreshments after the symposium.		
<b>Optional : BFHI Coordinator Dinner: After the Seminar: Tram from Rikshospitalet to Aker Brygge. Boat trip (25 minutes) to seaside restaurant Signalen. Meals from 20 Euro. Reservations essential : MetteNess Hansen <a href="mailto:mnessh@online.no">mnessh@online.no</a> ASAP</b>			

<b>Thursday 7 June, 2012</b>				
BFHI Expansion and Coordinators Network				
Time	Theme		Speaker	Room
8:00-8:20	<b>REVIEW OF DAY 2</b>			
8.20 - 9:00	<b>8. OTHER BFI EXPANSIONS</b>			
8:20 -8:40	8.1	BFHI and Health Promoting Hospitals	Randa Saadeh (Geneva)	
8:40 -9:00	8.3	BFI Expansion to Universities	Anne Woods (UK)	
9.00 - 9:10		Questions	Plenary	
9:10 – 10:00	<b>8.4. Working groups on BFI Expansions: Criteria and assessments</b>			
		BFI in the NICU	Group 1	
		BFHI and Health Promoting Hospitals	Group2	
		BFI in the Universities and other settings	Group 3	
		Difficulties in implementing extended 2009 UNICEF/WHO BFHI standards	Group 4	
10:00-10:15		<b>Working Groups presentations</b> (feedback max 2 minutes/ group) and plenary discussion	Plenary	
10:15-10:35	<b>COFFEE BREAK</b>			
10.35-12:15	<b>9. FINANCIAL, MANAGEMENT AND QUALITY ISSUES</b>			
10.35-10:55	9. 1	The value of BFHI in resource rich countries	G. Becker (Ireland)	
10:55-11:45	<b>9.2 Working groups on Financing BFI / Including BFI in Quality of Care Agenda</b>			
		Finding resources for BFI	Group 1	
		Increasing or sustaining interest in BFI at facility and professional levels: issues and solutions	Group2	
		Management issues in BFI implementation at country level	Group 3	
		Quality issues in BFI: measuring the impact, indicators, assessors, etc.	Group 4	
11:55-12:15		<b>Working Groups presentations</b> (feedback max 5 minutes/ group) and plenary discussion		
12.15-13.15	<b>LUNCH</b>			
13.15-15.00	<b>10. BFI COORDINATORS NETWORK FOR INDUSTRIALIZED COUNTRIES</b>			
13:15-13:35	<b>10.1</b>	BFI Coordinators Network for industrialized countries webpage	MT Hernández (Spain)	
13.35-14:00	<b>10.2</b>	Report from the Coordinators	<b>Coordinators</b>	
14:00-15.00	<b>10.3</b>	Plenary Group Discussion	<b>Plenary</b>	
		• Improving communication and networking.		
		• Administrative matters		
		• Election of coordinator(s)		
		• Arrangements for 2014 meeting		
15:00– 15:30	<b>WRAP-UP AND CLOSURE OF THE MEETING</b>			