

# The WQX Web submission tool

- Accepts basic input formats (i.e. Excel or Text files)
- Has translations for mapping data to WQX domain values or defaults
- Creates a WQX file that a user can send through WQX

The screenshot shows a web browser window displaying the WQX Web submission tool interface. The browser's address bar shows "Home" and the page title is "WQX Web Home". The page content includes a navigation menu on the left with links for "Import Configurations", "Create New Dataset", "Datasets", "Lookup Tables", "Event Log", "Organizations", "Preferences", "User Information", and "Logout". The main content area features a "Welcome!" message and a list of links: "Create or Edit an Import Configuration", "Create a New Dataset", "Continue with an Existing Dataset", and "Review Lookup Values". The footer contains the text "U.S. ENVIRONMENT" and "STORET Home | Privacy and Security Notice | Contact Us". The page number "28" is visible in the bottom right corner.

U.S. ENVIRONMENT

WQX Web  
You are here: Home  
Home

Import Configurations  
Create New Dataset  
Datasets  
Lookup Tables  
Event Log  
Organizations  
Preferences  
User Information  
Logout

**Welcome!**  
This tool will assist you with the creation of an XML file compatible with the Water Quality Exchange.  
The following links will assist you with the most common features of the application:  
[Create or Edit an Import Configuration](#): Create a reusable configuration that describes what your import file looks like and how it maps to WQX data elements.  
[Create a New Dataset](#): Create a set of data that will be the source for your WQX XML Submission File.  
[Continue with an Existing Dataset](#): Continue where you left off on an existing dataset.  
[Review Lookup Values](#): Review the list of allowed values for a specific domain or add values to organization-specific lists of values.

U.S. ENVIRONMENT  
STORET Home | Privacy and Security Notice | Contact Us

28



## Create New Dataset

- [Import Configurations](#)
- [Create New Dataset](#)
- [Datasets](#)
- [Lookup Tables](#)
- [Event Log](#)
- [Organizations](#)
- [Preferences](#)
- [User Information](#)
- [Logout](#)

### To Insert or Update Data:

- [Import a File of Projects](#)
- [Import a File of Monitoring Locations](#)
- [Import a File of Monitoring Location Weights](#)
- [Import a File of Biological or Habitat Indices](#)
- [Import a File of Activities and Results](#)
- [Import a File of Activities and Metrics](#)
- [Import a File of Activity Groups](#)

### To Delete Data:

- [Import a File of Project Identifiers to be deleted](#)
- [Import a File of Monitoring Location Identifiers to be deleted](#)
- [Import a File of Activity Identifiers to be deleted](#)
- [Import a File of Activity Group Identifiers to be deleted](#)
- [Import a File of Index Identifiers to be deleted](#)

### To Submit XML:

- [Submit an XML file](#)



## Import Configuration Detail

[Change Access Rights](#)

Name:

Description:

Type:

Column Delimiter:

### Element Values to be Generated Automatically:

Data Element	Default Value	Format
Organization ID	WOXTEST	

[Pick Generated Elements](#)

### Map Import Columns to Data Elements:

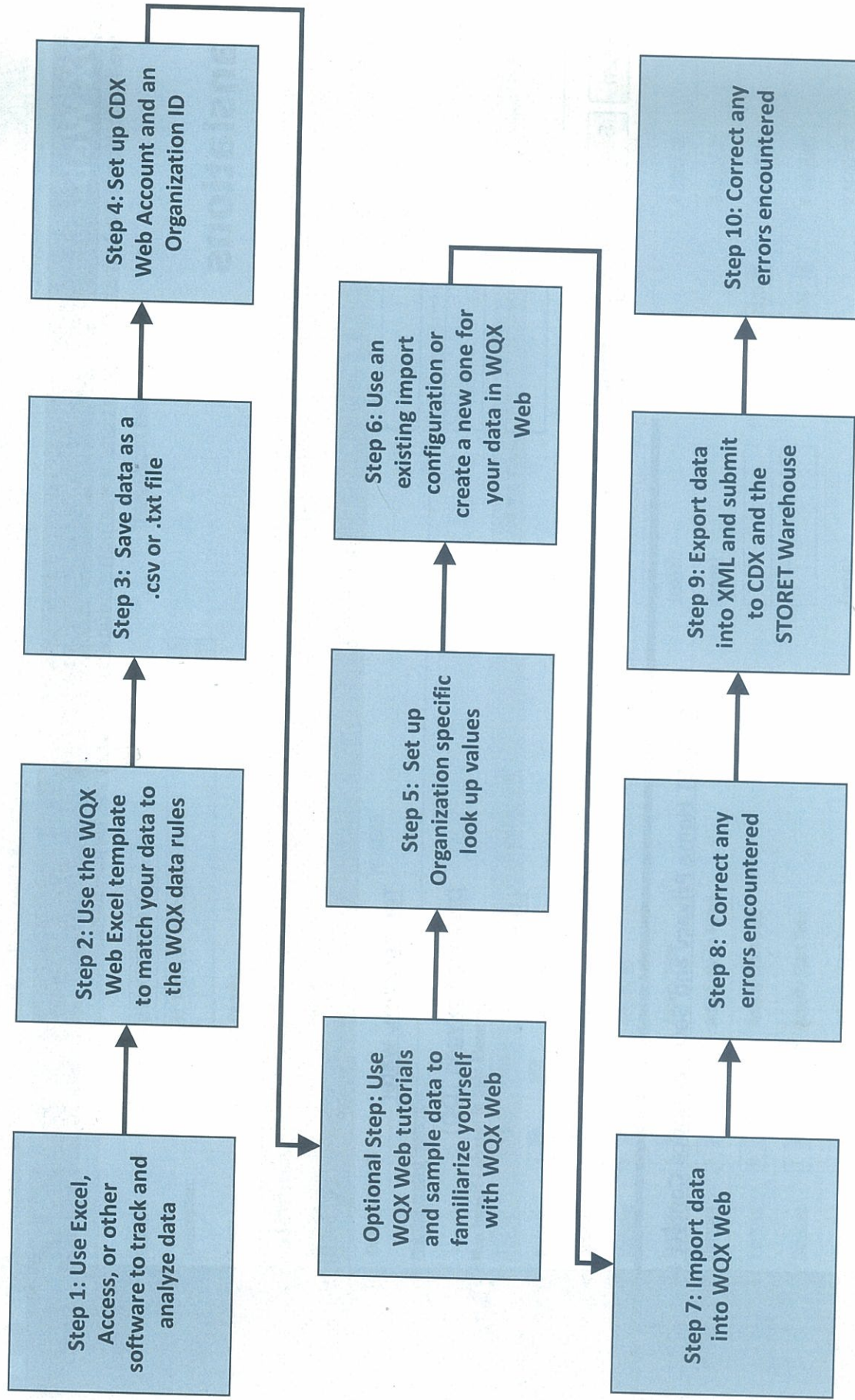
Column	Pick	Data Element	Default Value	Format	Translation Count
<a href="#">Remove</a> 1	<input type="checkbox"/>	Project ID	{none}		0 <a href="#">Add/Edit</a>
<a href="#">Remove</a> 2	<input type="checkbox"/>	Monitoring Location ID	{none}		0 <a href="#">Add/Edit</a>
<a href="#">Remove</a> 3	<input type="checkbox"/>	Activity ID			0 <a href="#">Add/Edit</a>
<a href="#">Remove</a> 4	<input type="checkbox"/>	Activity Type	{none}		0 <a href="#">Add/Edit</a>
<a href="#">Remove</a> 5	<input type="checkbox"/>	Activity Media Name	{none}		0 <a href="#">Add/Edit</a>
<a href="#">Remove</a> 6	<input type="checkbox"/>	Activity Start Date		YYYY/MM/DD	0 <a href="#">Add/Edit</a>
<a href="#">Remove</a> 7	<input type="checkbox"/>	Activity Start Time		HH24:MI:SS	0 <a href="#">Add/Edit</a>
<a href="#">Remove</a> 8	<input type="checkbox"/>	Activity Start Time Zone	{none}		0 <a href="#">Add/Edit</a>



- Import Configurations
- Create New Dataset
- Datasets
- Lookup Tables
- Event Log
- Organizations
- Preferences
- User Information
- Logout



# WQX Web Data Submission Process





# Where do Web Services fit?

