



A Brief Overview of CPSC's National Product Testing & Evaluation Center

Andrew G. Stadnik, P.E.

U. S. Consumer Product Safety Commission
Associate Executive Director for Laboratory Sciences
5 Research Place, Room 115
Rockville, MD 20850
301-987-2037
astadnik@cpsc.gov

U. S. Consumer Product Safety Commission
4330 East West Highway
Bethesda, MD 20814
1-800-638-CPSC
www.cpsc.gov

June 2011

Where is the CPSC?

- **National Product Testing & Evaluation Center**

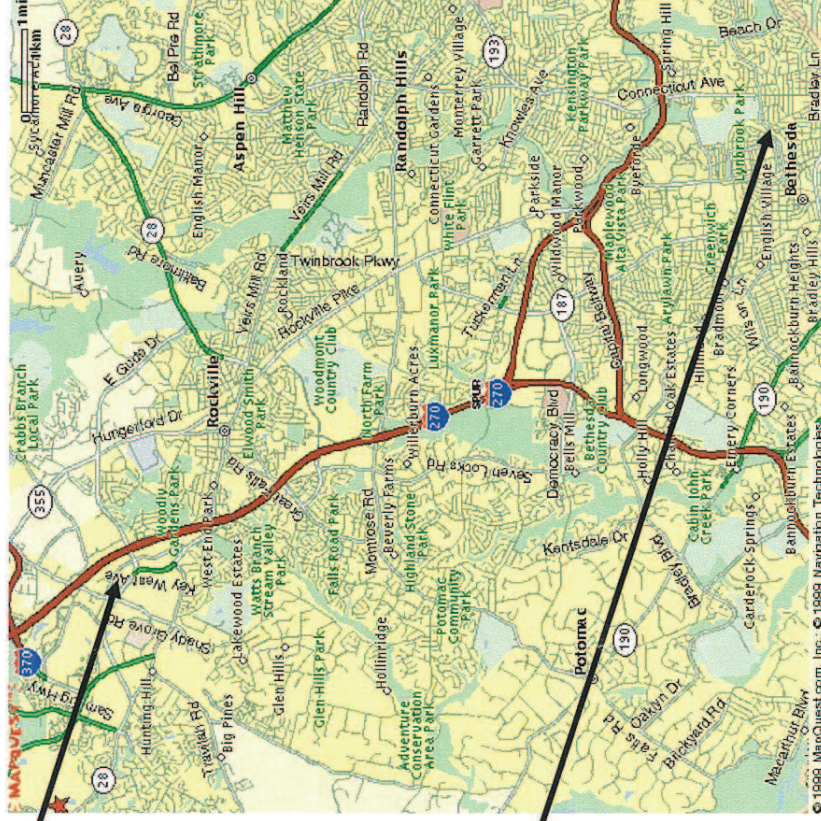
- 5 Research Place, Rockville
- 32,000 sq ft lab areas
- 75 staff
- Specialized Testing Locations
- Fireworks at DOD's Blossom Point Test Range (3 hrs east)
- ATV/ROVs – w/in 30 min of lab private airfields

- **Bethesda Towers**

- 4330 East West Hwy
- 6 floors leased
- 350 staff

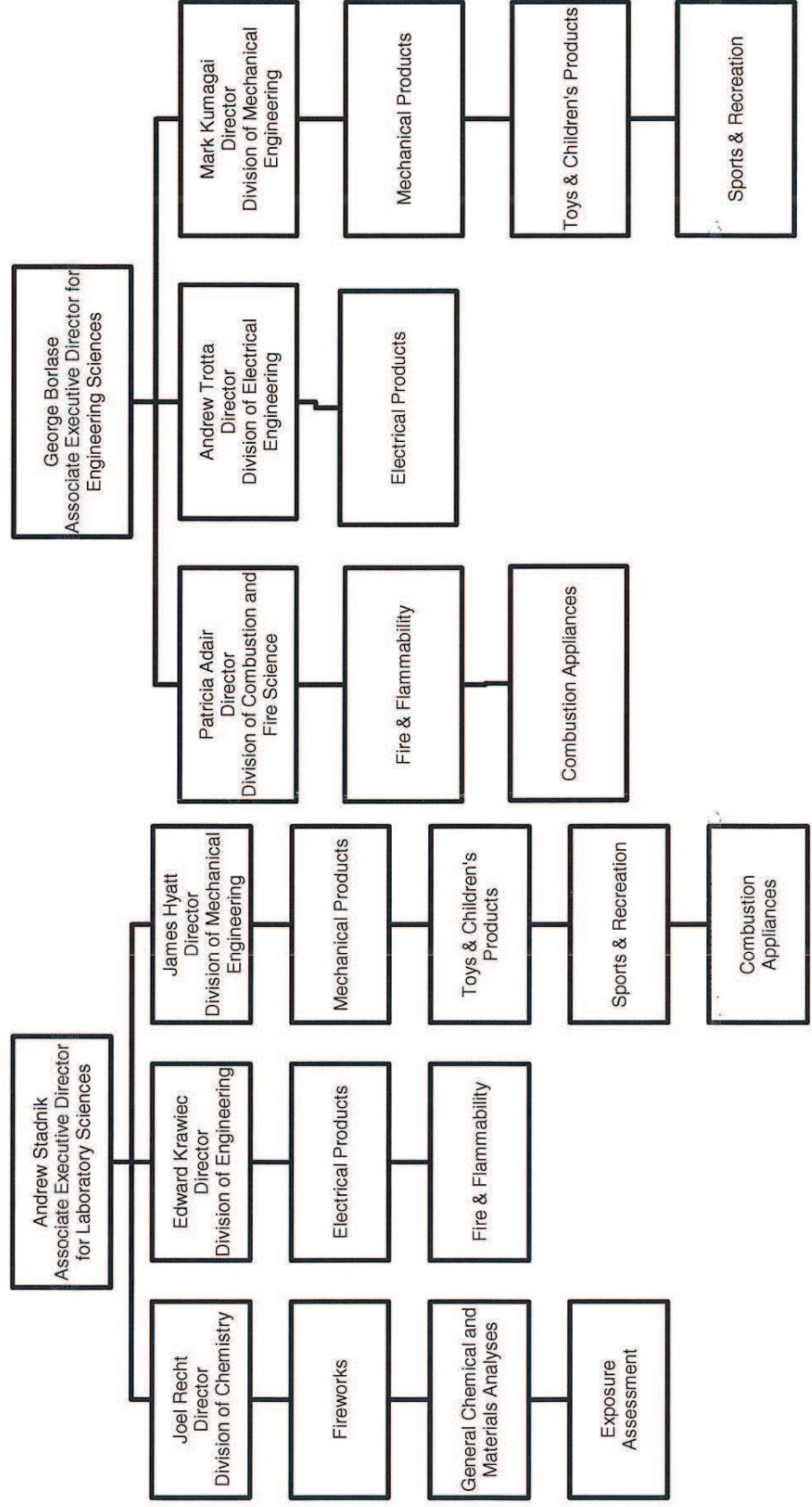
- **Field Operations**

- ~120+ field staff in 40+ states
- Major seaports covered



CPSC National Product Testing & Evaluation Center Organizations

- Engineering and Laboratory Sciences Directorates
- 64 of 69 full time staff as of June 2011, 7 interns
- 56 degreed engineers/scientists
- 12 PhD's, 15 Master's, 5 Licensed Engineers

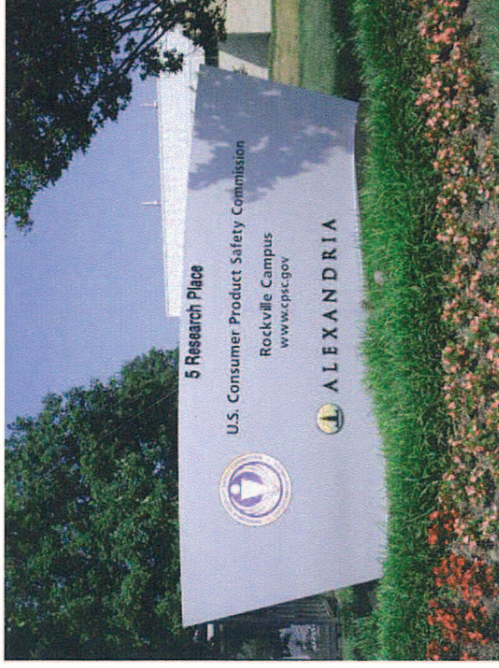


Overview of LS and ES Activities

- **Compliance Support - about 60% of effort**
 - Regulated Product Testing – lead, phthalates, sleepwear, fireworks, toys, bike helmets, bunk beds, carpets, mattresses, pool drains, etc.
 - Section 15 Product Safety Assessments – appliances, fans, lamps, etc.
 - Conformance Assessments – candles, holiday lights, CO alarms.
 - Customs Support - fans, lamps, extension cords.
- **Hazard Reduction Support - about 30% of effort**
 - Develop test methods for mandatory and voluntary standards – generators, upholstered furniture, phthalates, Cadmium, cribs, high chairs.
 - Conduct product evaluation projects - engine generators, circuit breakers, furnace emissions, CO alarms, smoke alarms.
 - Participate/monitor standard-setting activities of various consensus standards organizations (e.g., American Society for Testing and Materials (ASTM), Underwriter's Laboratories(UL), American National Standards Institute (ANSI), and several others).
- **Other Work - about 10% of effort**
 - Public affairs support for press releases and news events.
 - Outreach and Special Projects - Handbooks/guidelines for consumers, presentations, tours of facility/test programs.

CPSC National Product Testing & Evaluation Center

- New, modern lab-office location - 5 Research Place, Rockville, MD
- 63,000 sq ft (32,000 sq ft of laboratory testing space vs 13,000 at old site)
- Lease Awarded & Design Initiated May 2009
- Construction started April 2010
- Moved in and Operational May 2011
- 75 Engineers, Scientists, and Support Staff



CPSC National Product Testing & Evaluation Center

Testing Areas



Toy Test Lab



Children's Products Lab



Pool and Spa Products Lab



Impact Lab (Bike Helmets)



General Product Test Lab



Outdoor Power Sports Lab



Electrical Products Test lab



Chemistry Lab



Combustion Products Test Lab



Modern Conference Space



Machine Shop



Flammability/Fire Test Lab

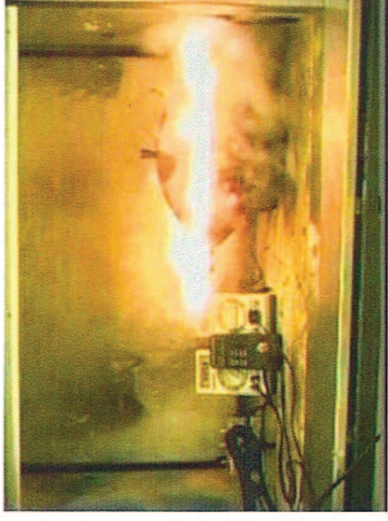
Examples of Product Testing



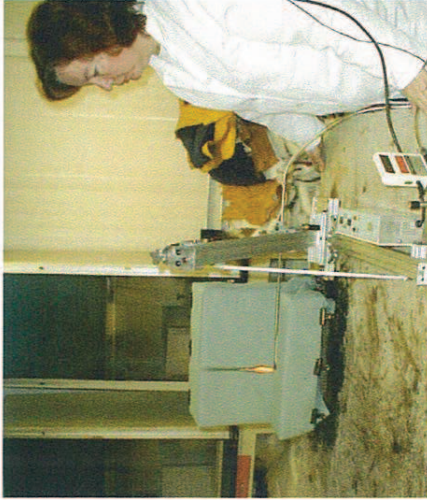
Fireworks



Toy Testing



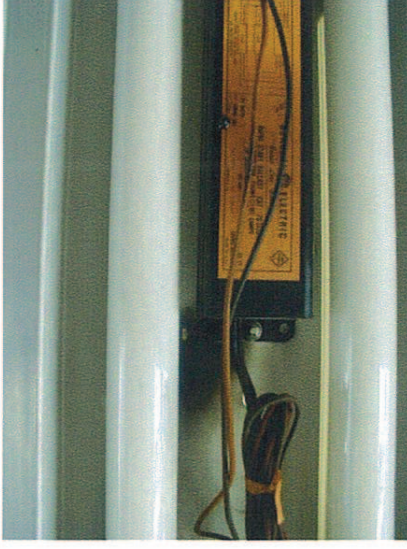
Cooking Appliance



Upholstered Furniture



Portable Bed Rails



Lighting Fixtures