

Scenario C: Check Import Shares in T10

Scenario C – Half cut on TLs 280512.00 and 280519.00

- ❖ Check Import share in T10, cannot find the same code
- ❖ Note that Column HS2002_change is flagged 'Y'
- ❖ Check Concordance Table for changes to these TLs

TL in T04	TL in T10	NAMA Share	Chapter Share
28051200	↔ 28052100	0.5	5.0
28051900	↔ 28051900	0.2	2.0
	↔ 28052200	7.1	70.0
Total		7.8	77

19

Scenario C: Checking the Three Constraints

Scenario C – Half cut on TLs 280512.00 and 280519.00



Imports: 10% of NAMA Trade



Correspond to 280519.00, 280521.00 and 280522.00 in T10
Account for 7.8% (T10 Column14) NAMA trade



ACC: 80% tariff lines OR 91% trade of HS chapter

Two TL account for 67% tariff lines of Chapter 28
Imports account for 77% (T10 Column15) of Chapter trade

20

Scenario C: Update the Tables



Scenario C – Half cut on TLs 280512.00 and 280519.00

To Do in T04 – Concession Table

- ❖ Put '7B1' in *Column 27* for the two TLs
- ❖ For these TLs only, copy the value for *Formula_7B half_cut (Column 31)* to *New Bound Duty (Column 36)*
- ❖ *New Bound Duty Binding (Column 37)* [B]
- ❖ *New Bound Duty Nature (Column 38)* [A]
- ❖ *New Implementation From (Column 47)* [2012]
- ❖ *New Implementation To (Column 48)* [2022]

To Do in T10 – Import Statistics

- ❖ Fill in *Column 16* of TL 280519.00, 280521.00, and 280522.00 with the codes 280519.00, 280512.00 and 280519.00
- ❖ Based on standard HS96-HS2002 concordance, allocation is 100% (*Column 18*)
- ❖ To indicate TL was chosen for flexibility option, put 'Y' in Paragraph 7 column (*Column 19*)

21

Other Issues - Sectoral



Assume Member wants to participate in a proposal for sectoral agreement called "Home Fixtures" for HS Codes 3922.10 and 3922.90, Duty Free, and with a 3-year implementation period (4 equal installments) starting on the year following the entry into force of the DDA results

To Do in T04 – Concession Table

For these two TLs (392210.00, 392290.00) in T04 Concession Table, fill in the Sectoral Issues Columns (Cols 33-35):

- ❖ *Sectoral Name (Column 33)* [Home Fixtures]
- ❖ *Sectoral Duty (Column 34)* [0]
- ❖ *Sectoral Implementation To (Column 35)* [2015]

22

Other Issues – New INRs



Another Member BBB negotiated to have INR on TL 290721.00

To Do in T04 – Concession Table

Put Member BBB's 3-digit ISO alpha code [BBB] in column for New INR (*Column 45*) for the above TL

23

Other Issues – Changes on Nomenclature

Member wants to align its concession nomenclature with its applied tariff nomenclature, i.e., it wants to subdivide TL 310100.00 into TLs 310100.10 and 310100.90 as follows:

310100	Animal or vegetable fertilisers, whether or not mixed together or chemically treated; fertilisers produced by the mixing or chemical treatment of animal or vegetable products.
31010010	--- Animal fertilizers
31010090	--- Other.

24

Other Issues – Changes on Nomenclature

To Do in T04 – Concession Table

- ❖ Copy the current TL 310100.00 row and paste it twice
- ❖ Change the original TL from a data TL to a descriptor TL by changing TLLevel (*Column 6*) from 999 to another number, e.g., [6]
- ❖ Clear data columns of original TL (*Columns 10-13, 16-53*)
- ❖ Edit Description column (shown in previous slide) for the two new TLs 310100.10 and 310100.90
- ❖ Adjust ID for the new TLs (*Column 2*) to any 2 consecutive numbers in between the original ID and that of the next row [11.5] [11.8].
- ❖ Put [A] in Modification flag column (*Column 14*)

25

Other Issues – Changes on Nomenclature

Fill in T11_Correlation table as follows:

TL_T04	TLS_T04	TL_ENF	TLS_ENF
4	5	6	7
31010010		31010000	
31010090		31010000	

26

Other Issues – Generating Report



- ❖ Report Module is in MS Access database file:
AAA_ENF_DRAFT.mdb
- ❖ In EXCEL select all data records of T04 (Rows 7 to 37) and choose Copy (or press CTRL-C)
- ❖ Open database table T04_ConcessionNon_Ag in the AAA_ENF_DRAFT.mdb
- ❖ If table is not empty, either delete records or rename the table (to preserve old version). Copy and Paste Structure Only into a new empty table with the name T04_ConcessionNon_Ag
- ❖ Paste the records copied from EXCEL (CTRL-V)

27

Other Issues – Generating Report



- ❖ Go to the Reports Module and select
3_Part_I_Section2_Non_AG_tariffs
- ❖ Report will show the new concessions
- ❖ Numbers in brackets refer to sectoral negotiations not yet finalized

28

Complete ECDS Version



- ❖ Save the Excel table with filename AAA_ENF_02M.xls.
- ❖ Copy and Paste the contents of the other Excel tables (T10 and T11) to the corresponding MS Access tables to have a complete ECDS in MS Access format
- ❖ The ECDS Version 02M (Excel and MS Access) is now ready for submission!

29

Step-by-Step Guide to Prepare the Electronic Comprehensive Draft Schedule (ECDS) from the Electronic Negotiating File (ENF)

**For Small, Vulnerable Economies
(SVEs)**



30

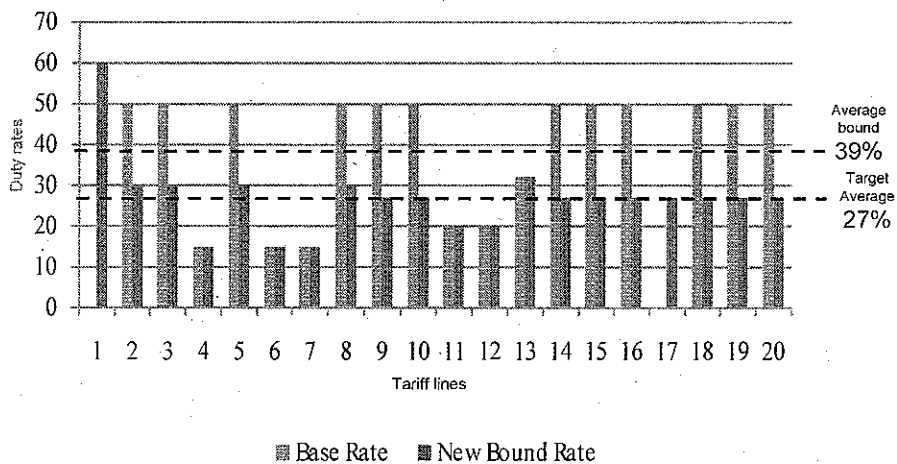
Paragraph 13(a) SVEs



Current Bound NAMA Average	Overall Target Average
$\geq 50\%$	30
$\geq 30\%$ and $< 50\%$	27
$\geq 20\%$ and $< 30\%$	18
$< 20\%$	A minimum line-by-line reduction of 5 percent on 95 percent of TLs or bind at the overall average that would result from that line-by-line reduction.

31

Target Average 27%



32

Main Tasks - SVEs



- ❖ Current Bound tariff average □ range □ target
- ❖ Decide initial rates:
 - ❖ For bound tariff lines: bound duty
 - ❖ For unbound tariff lines: determined by individual Member
- ❖ Decide final bound rates:
 - ❖ Should not be higher than existing bound rates
 - ❖ Simple average should be equal to or lower than the target
- ❖ Could use current applied schedule as basis, but need to provide correlation table between applied and ENF, for easier verification

33

Strategies for Target Averages



- ❖ Freely set the new bound rates, as long as
 - ❖ The new average not exceeding the target
 - ❖ The new duties for bound lines not exceeding the existing bound
- ❖ Infinite choice (for a schedule with 5,000-10,000 tariff lines)
- ❖ Strategy is important for efficiency
 - ❖ First, set initial duties according to certain rules for all tariff lines to make the average at least close to the target
 - ❖ Then, adjust these initial duties of individual sectors, HS chapters or tariff lines based on national priorities

34

Determine the Target



- ❖ Calculate the bound tariff average of NAMA lines
$$\text{sum of duties} / \text{number of bound tariff lines} = 39.3$$
- ❖ Target average to be met [27]
- ❖ Three strategies to set the initial duties
 - ❖ Scenario 1: Ceiling Binding
 - ❖ Scenario 2: Based on Existing Bound Duties
 - ❖ Scenario 3: Based on Applied Duties

35

Prepare the Work Table with T04



- ❖ Change version from 01S to 02M
- ❖ Add one extra column just before *Column 36*
Needed for the applied schedule

Column A: For applied duties

- ❖ Add three extra columns for strategies

Column B: Scenario 1 – Ceiling binding
Column C: Scenario 2 – Based on Bound duties
Column D: Scenario 3 – Based on Applied duties

- ❖ Add *Column E* (Flag) for calculations

36

Scenario 1: Ceiling Binding



Use the target as Initial duties for all tariff lines

- ❖ Fill in *Column B*, put [27] across all tariff lines
- ❖ Check for binding violation [*Column E*]
- ❖ Check the overall average and adjust [*Column B*] to reach the target

37

Scenario 2: Reduce Existing Bound Duties

Method A:

Set initial duties as existing bound duties minus a percentage point, which equal to

Average of existing bound duties minus the target

For this schedule: $39.3 - 27 = 12.3$ points

- ❖ Put in *Column C*: New bound duty = base duty – 12.3
- ❖ For unbound items put 27
- ❖ Check the overall average and adjust to reach the target
 - ❖ Check for negative, zero or very low new bound duties
 - ❖ Check cut on applied duties

38

Scenario 2: Reduce Existing Bound Duties

Method B:

Set initial duties as existing bound duties times a percentage, which equal to
the target divided by the average of existing bound duties

For this schedule: $27/39.3 = 69\%$

- ❖ Put in *Column C*: New bound duty = base duty * 69%
- ❖ For unbound items put 27
- ❖ Check the overall average and adjust to reach the target
 - ❖ Check for very low new bound duties
 - ❖ Check cut on applied duties

39

Scenario 3: Increase Applied Duties

Method A:

Set initial duties as applied duties plus a percentage point, which equal to
the target minus average of applied duties

For this schedule: $27-12.3 = 14.7$ points

- ❖ Put in *Column D*: New bound duty = applied duty + 14.7
- ❖ For Unbound items put 27
- ❖ Check the overall average and adjust to reach the target
 - ❖ Check for binding violations

40

Scenario 3: Increase Applied Duties



Method B:

Set initial duties as applied duties times a percentage, which equal to
the target divided by the average of applied duties

For this schedule: $27/12.3 = 220\%$

- ❖ Put in *Column C*: New bound duty = applied duty * 220%
- ❖ For unbound items put 27
- ❖ Check the overall average and adjust to reach the target
 - ❖ Check for binding violations

41

Update the NAMA Concessions Table (T04)



To Do in T04 – Concession Table

- ❖ Fill-in the following columns for each data line (TLLevel (Column 6) = 999):
- ❖ New Bound Duty AV (*Column 36*) [copy your new bound duties from Column B, C or D and paste values]
- ❖ For Unbound duties update the Base duty
- ❖ New Bound Duty Binding (*Column 37*) [B]
- ❖ New Bound Duty Nature (*Column 38*) [A]
- ❖ New Implementation From (*Column 47*) [2012]
- ❖ New Implementation To (*Column 48*) [2022]
- ❖ Delete columns A to D and Flag

42

Download the Materials



All files used here are available for download at
WTO Member's site: <http://members.wto.org>

The screenshot shows the WTO Members' Site interface. On the left is a 'Navigation Menu' with a tree structure. The '2004-2005' folder is expanded, and the '2004-2005' folder is circled in red. The main content area on the right lists various sections with brief descriptions and icons. The 'NEW' section is circled in red, with the text 'Workshop on Electronic Negotiating Files (ENEF) - 12-17 July 2009' highlighted. The page number '43' is visible in the bottom right corner.

Section	Description	Icon
NEW	Workshop on Electronic Negotiating Files (ENEF) - 12-17 July 2009	NEW
Market Access - Other related issues	This section contains PowerPoint presentations and other documentation relating to market access prepared by the Secretariat	
Notifications	How to access notifications data submitted by Members to the WTO, Central Registry of Notifications (CRN)	01
Plurilateral Agreements	This section contains statistical information and other documentation relating to the work of the Committee administering the Plurilateral Agreements (excluding official documents in the GPA, TCA, IDA, and IAA series)	02
Publications	Selected WTO publications in electronic format	03
Regional Trade Agreements	Access by Members to the RTA Database as presented at the section of the Committee on Regional Trade	04

Address comments/questions to
DohaSchedules@wto.org

Thank You!



Regional Workshop on Market Access Related Issues for Asian Economies

The Scheduling Process in the NAMA Negotiations

Jurgen Richtering
Economic Research and Statistics Division
WTO Secretariat

This presentation has been prepared by the Secretariat under its own responsibility and is without prejudice to the positions of Members and to their rights and obligations under the WTO and to the establishment of modalities.



Contents



Introduction to Scheduling
Process, ENF and ECDS, status of work



NAMA Electronic Negotiating File
Data, tables structure, columns



**Demonstration –
How to Prepare NAMA Draft Schedules**
Step-by-step guide to prepare the ECDS from the ENF

WTO Goods Schedules



- ❖ All WTO Members have a Schedule of concessions on goods
- ❖ Schedules are part of the WTO Agreement and have the same legal status as any WTO Agreement
- ❖ Schedules may be in any of the official WTO languages

3

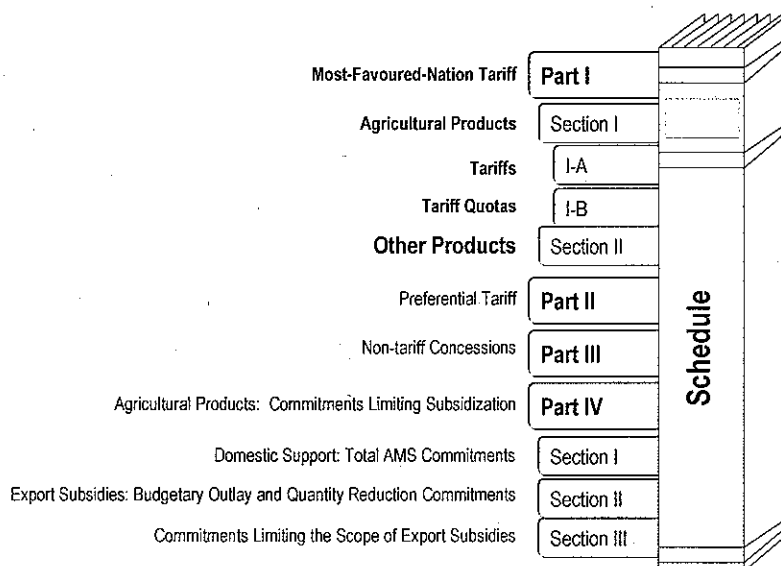
WTO Goods Schedules



- ❖ Represent part of the outcome of negotiators work (the other part is represented through rule/text)
- ❖ Record concessions regarding tariff, tariff quotas and others
 - ❖ Maximum permissible customs duties to be charged on imports
 - ❖ Tariff quota volume and in-quota tariff rates
 - ❖ Ag commitments on domestic support and export subsidies
 - ❖ Non-Tariff Concessions

4

Schedules of Concession on Goods



5

Part I Section II – NAMA Products



ANNEX 3 – EXAMPLE OF A PAPER VERSION: NON-AGRICULTURAL TARIFF SECTION SCHEDULE (Roman Number – Name of Member)

This schedule is authentic only in the [English] [French] [Spanish] language

PART I – MOST-FAVOURLED-NATION TARIFF SECTION II – NON-AGRICULTURAL PRODUCTS

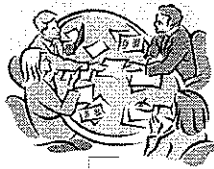
Headnote (if applicable)

Tariff item no. (HS2002)	Ex	Description of products	Base rate of duty		Final bound rate of duty		Implementation period		Initial negotiating right on the concession	Other duties and charges	Other terms and conditions
			Ad val. (%)	(U/B)	Ad val. (%)	From	To				
			3.A	3.B	4	5.A	5.B				
1		2						6	7	8	
03		FISHLAND CRUSTACEANS, MOLLUSCS AND OTHER AQUATIC INVERTEBRATES									
0301		Live fish									
030110		-- Ornamental fish									
03011000	ex01	-- Goldfish (<i>Carassius auratus auratus</i>)									
03011000	ex02	-- Other	5.0	U B	4.0	2010	2015		BRB	10	
030119		-- Other live fish:									
03011910		-- Trout (<i>Salmo trutta</i> , <i>Salmo gairdneri</i> , <i>Salmo clarki</i> , <i>Salmo gairdneri</i> , <i>Salmo gairdneri</i>)	30.0	B	[12] [5]	2010	[2015] [2010]			1	[Conditional on fish sectoral]
03011920		-- Eels (<i>Anguilla</i> spp.)	30.0	U	[12] [5]	2010	[2015] [2010]				[Conditional on fish sectoral]
03011930		-- Carp	0	B	0				BRB	0	
03011990		-- Other	30.0	U	5.0	2010	2015				
0302		Fish, fresh or chilled, excluding fish fillets and other fish meat of heading No. 03.04									
03021		-- Salmonidae, excluding fry and eggs:									
03021100		-- Trout (<i>Salmo trutta</i> , <i>Salmo gairdneri</i> , <i>Salmo clarki</i> , <i>Salmo gairdneri</i> , <i>Salmo gairdneri</i>)	25.0	B	25.0				CHL	0	
03021200		-- Pacific salmon (<i>Oncorhynchus</i> spp.), Atlantic salmon (<i>Salmo salar</i>) and Danube salmon (<i>Hucho hucho</i>)	25	B	0	2013	2018		NOR, EEC	1	Concession annexed to the MFN will be fully implemented on 01/01/2012.

[Note: The conditional information concerning sectoral will appear in brackets during the review phase, but it will be replaced by a single commitment in the final version of the schedule.]

6

Scheduling: after the establishment of Modalities



World Trade Organization
General Agreement on Tariffs and Trade

MODALITIES

...



7

Realize the Modalities in the Schedules

Current Schedule

HS Code	Duty
010110	10%
010120	50%
010190	30%
...	...



Modalities

$$t_1 = \frac{t_0 \times 22}{t_0 + 22}$$



New Schedule

HS Code	Duty
010110	6.9%
010120	15.3%
010190	12.7%
...	...

8

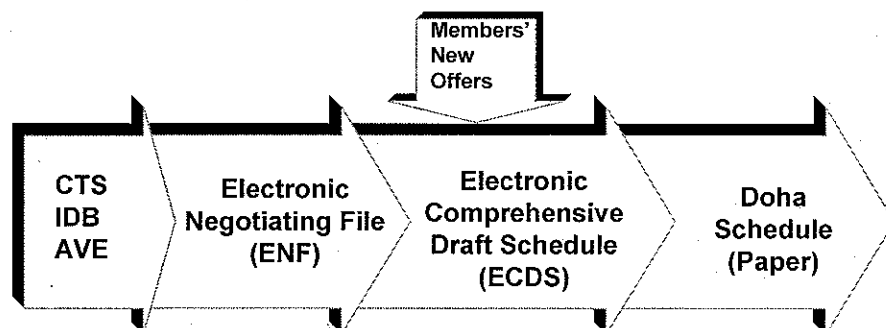
What is Scheduling?



- ❖ The last phase of the negotiation
- ❖ Apply the agreed modalities to Members tariff schedules
- ❖ Some base concession need to be established (unbound, AVEs,...)
- ❖ Submit draft schedules for multilateral review
- ❖ Check or verify schedules among Members
- ❖ Produce the legal documents – Doha Round schedules

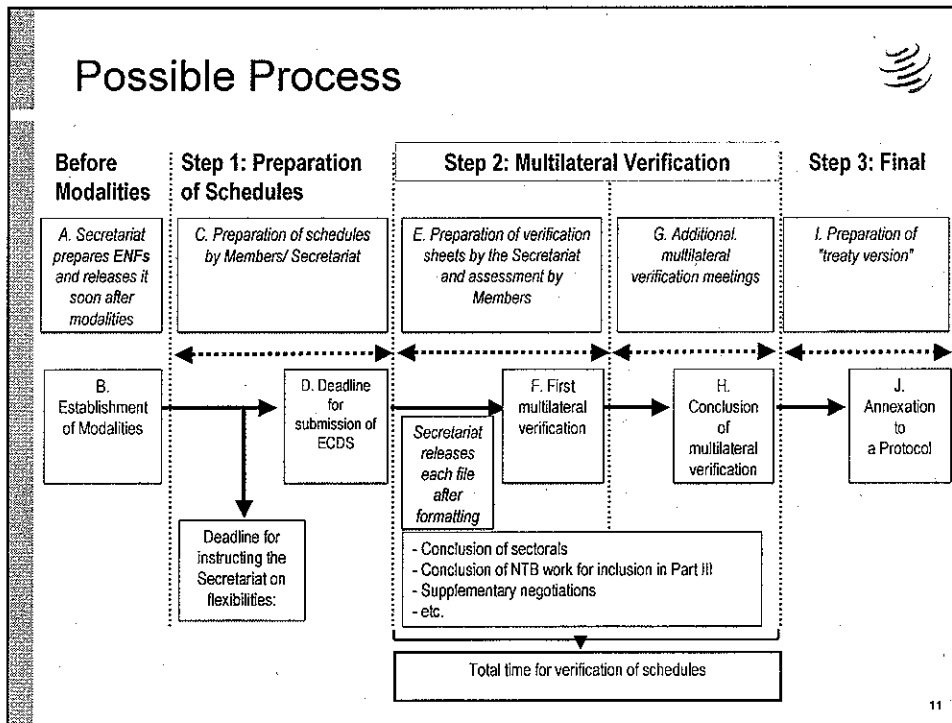
9

Data Used in the Whole Process



10

Possible Process



11

Secretariat's Assistance



- ❖ Prepare the ENFs
- ❖ Developing Members may ask the Secretariat to prepare the ECDS, clear instructions and requirements need to be provided, e.g. which tariff line to shelter under which flexibility
- ❖ Standardize, reformat ECDS for multilateral reviews
- ❖ Technical verification for assessing the consistent application of the modalities
- ❖ Assistance in multilateral reviews
- ❖ Prepare treaty paper copy of the final schedules

12

Contents



Introduction to Scheduling

Process, ENF and ECDS, status of work



NAMA Electronic Negotiating File

Data, tables structure, columns



Demonstration – How to Prepare NAMA Draft Schedules

Step-by-step guide to prepare the ECDS from the ENF

13

Concept of ENF and ECDS



- ❖ Vehicle for exchange of offers and basis for generating final schedules
- ❖ The Secretariat will release ENFs to Members shortly after the establishment of modalities
- ❖ Members put their new concessions in ENFs
- ❖ The files become ECDS when Members return them to the Secretariat
- ❖ ECDS will be verified by other Members
- ❖ The final version of ECDS becomes the new schedule

14

Electronic Negotiating File (ENF)



❖ **Dataset** - includes all data elements required by the modalities

- ❖ Source data from the official database: IDB and CTS
- ❖ Base duties have been established
- ❖ Pre-calculations of Swiss formula
- ❖ Other supporting data – import statistics, correlation tables

❖ **Template** - provides a uniform format for data exchange

- ❖ Include all tables required for draft schedules
- ❖ Table structures – all columns required
- ❖ A format agreed by all Members
- ❖ All Members use the same structure
- ❖ Transparency – make verification easier

15

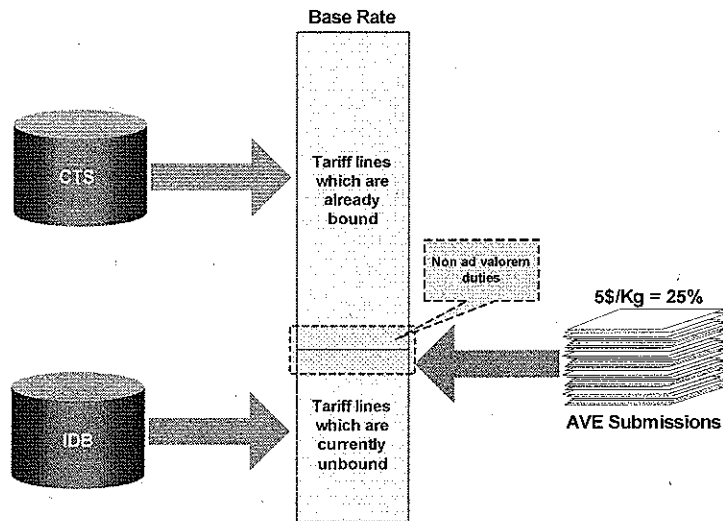
Information Provided in ENFs



- ❖ Based on the CTS database in HS 2002 nomenclature
- ❖ Base rates (formula cut)
 - ❖ For bound: base rate = existing final bound rate
 - ❖ For unbound: base rate = 2001 applied rate + markup(s)
- ❖ AVEs for NAV tariffs
- ❖ Pre-calculate formula result for Members applying the formula
- ❖ Other concession elements (INR, ODC, implementation)
- ❖ 3-year (1999-2001) imports (in separate table, HS96)
- ❖ Other supporting tables (e.g. correlation table)
- ❖ Other parts or contents in the current schedules
 - ❖ Notes, Attachment B of ITA

16

Establish Base Rates for Formula Cuts



17

Data Formats



ENFs will be made available in MS Excel and MS Access formats



MS Excel

- ❖ Pro: easy to work, flexible, used more extensively
- ❖ Cons: data not standardized, difficult to handle large dataset



MS Access

- ❖ Pro: standardized, easy to check errors, large dataset, print reports
- ❖ Cons: more technical, not flexible

18

Tables in ENF



Main Tables	
T04	Concession Table (non-agricultural products)
T04-ITA	ITA Attachment B items (ITA Participants only)
T05	Non-tariff measures
T08	Schedule headnotes

Supporting Tables	
T09	HS96-HS2002 Correlation
T10	Import Statistics and Correlation
T11	Correlation Table for Changes between ENF and ECDS

19

T04 – Concession Table



- ❖ The most important table in the ENF
- ❖ Contains the tariff concessions (Existing and New)
- ❖ Other concessions and commitments at tariff line level

20

Complexity of T04 – Concession Table



Version	ID	HS version	Reporter	TL (Tariff line number)	TL Level (Tariff line level)	TL S (Tariff suffix)	Ex	HS2002 change	Source	Present instrument	First instrument	Certified	Modification flag	Description
1	2	3	4	5 (1)	6	7 (1)	8 (1)	9	10	11	12	13	14	15 (2)
01S	1	H3	001	2805	4									Alkali or alkaline-earth metals; rare-earth
01S	2	H3	001	28051	5									-- Alkali or alkaline-earth metals:
01S	3	H3	001	28051100	999			Y	HS02	WT/Lev999	UR94	C		-- Sodium
01S	4	H3	001	28051200	999			Y	HS02	WT/Lev999	UR94	C		-- Calcium
01S	5	H3	001	28051900	999			Y	HS02	WT/Lev999	UR94	C		-- Other

54 Columns

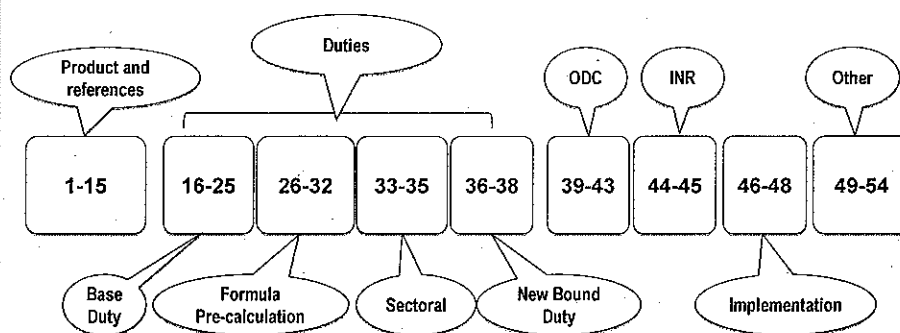


Version	ID	HS version	Reporter	TL (Tariff line number)	TL Level (Tariff line level)	TL S (Tariff suffix)	Ex	HS2002 change	Source	Present instrument	First instrument	Certified	Modification flag	Description
1	2	3	4	5 (1)	6	7 (1)	8 (1)	9	10	11	12	13	14	15 (2)
01S	1	H3	001	2805	4									Alkali or alkaline-earth metals; rare-earth
01S	2	H3	001	28051	5									-- Alkali or alkaline-earth metals:
01S	3	H3	001	28051100	999			Y	HS02	WT/Lev999	UR94	C		-- Sodium
01S	4	H3	001	28051200	999			Y	HS02	WT/Lev999	UR94	C		-- Calcium
01S	5	H3	001	28051900	999			Y	HS02	WT/Lev999	UR94	C		-- Other

Existing bound duty AV	Existing bound duty other	Existing bound duty nature	MFN Applied Duty AV	MFN applied duty other	Notified AVE	Mark-up	Base Duty	Base duty binding	Base duty nature	Coeff	Paragraph	Formula 7 A full cut	Formula 7 A half cut	Formula 7 B full cut	Formula 7 B half cut	Formula 4 po. flex	Sectional name
16	17	18	19	20	21	22	23 (3A)	24 (3B)	25	26	27	28	29	30	31	32	33
40					52/g	20	25	45	U	A		13.8	29.4	14.8	29.9	16.1	
45		A					40	B	A			13.3	26.7	14.2	27.1	15.4	
							45	B	A			13.8	29.4	14.8	29.9	16.1	

Sectoral duty	Sectoral implementation	New bound duty AV	New bound duty binding	New bound duty nature	ODC Duty AV	ODC duty other	ODC textual information	ODC note number	ODC duty nature	Existing NR	New NR	Existing Implementation To	New Implementation From	New Implementation To	Existing OTC	New OTC	New OTC Note Number	New Comments	Sectional name	
34	35	36 (4)	37	38	39 (7)	40 (7)	41 (7)	42	43	44	45 (6)	46	47 (5A)	48 (5B)	49	50 (6)	51	52	53	54
																				2805
																				28051
																				280511
																				280512
																				280519

Main Information in T04



Technical Note includes detailed description of each table and column

23

Columns in T04 Concession Table



T04. Concession Table (non-agricultural products)							
Version	ID	HS version	Reporter	TL (Tariff line number)	TLLevel (Tariff line level)	TLS (Tariff suffix)	Ex
1	2	3	4	5 (1)	6	7	8 (1)
...
01S	1	H3	001	2805		4	
01S	2	H3	001	28051		5	
01S	3	H3	001	28051100		999	
01S	4	H3	001	28051200		999	
01S	5	H3	001	28051900		999	
...
In example only 20 tariff lines selected but in real ENFs 5000 to more than 10000 tariff lines including unbound items							

24

Tariff Lines and Headers



TL (Tariff line number)	TLLevel (Tariff line level)	Description	Existing Bound Duty AV
5 (1)	6	15 (2)	16
2805		Alkali or alkaline-earth metals; rare-earth metals, scandium and yttrium, whether or not intermixed or interalloyed; mercury.	
28051	5	- Alkali or alkaline-earth metals:	
28051100	999	-- -Sodium	Unbound
28051200	999	-- -Calcium	40
28051300	999	-- -Other	45

Headers

Tariff Lines

25

Columns in T04 Concession Table



HS2002 change	Source	Present instrument	First instrument	Certifi ed	Modificat ion flag	Descripti on
9	10	11	12	13	14	15 (2)
...
						Alkali or
						- Alkali d
		WT/Let/999	UR/94	C		-- -Sodi
Y		WT/Let/999	UR/94	C		-- -Calc
Y		WT/Let/999	UR/94	C		-- -Othe
...

26⁸

Columns in T04 Concession Table



Existing Bound Duty AV	Existing bound duty other	Existing bound duty nature	MFN Applied Duty AV	MFN applied duty other	Notified AVE	Mark-up
16	17	18	19	20	21	22
...
				\$2/kg	20	25
40		A				
45		A				
...

27

Columns in T04 Concession Table



Base Duty	Base duty binding	Base duty nature	Coeff	Paragraph 7	Formula 7A full_cut	Formula 7A half_cut
23 (3A)	24 (3B)	25	26	27	28	29
...
45	U	A			13.8	29.4
40	B	A			13.3	26.7
45	B	A			13.8	29.4
...

28

Columns in T04 Concession Table



22		25			
Formula_7B_full_cut	Formula_7B_half_cut	Formula_no_flex	Sectoral name	Sectoral duty	Sectoral implementation to
30	31	32	33	34	35
...
14.8	29.9	16.1			
14.2	27.1	15.4			
14.8	29.9	16.1			
...

29

Columns in T04 Concession Table



New bound duty AV	New bound duty binding	New bound duty nature	ODC Duty AV	ODC duty other	ODC textual information
36 (4)	37	38	39 (7)	40 (7)	41 (7)
...
			0		
			0		
			0		
...

30

Columns in T04 Concession Table



ODC note number	ODC duty nature	Existing INR	New INR	Existing Implementation To	New Implementation From	New Implementation To
42	43	44	45 (6)	46	47 (5A)	48 (5B)
...
	A			2000		
	A			2000		
	A			2000		
...

31

Columns in T04 Concession Table



Existing OTC	New OTC	New OTC Note Number	New Comments	Secretariat Comments	HS6
49	50 (8)	51	52	53	54
...
					2805
					28051
					280511
					280512
					280519
...

32

Members' Submission of ECDS



- ❖ The same structure as ENFs
- ❖ Base duties for unbound [SVE, Low Binding]
- ❖ New final bound rates
- ❖ Other information (implementation, INRs)
- ❖ Supporting information for verification
 - ❖ Import correlations
 - ❖ Correlation tables for changes of tariff line codes or descriptions in ENFs
- ❖ Members may take different approaches to prepare their ECDS

33

Must Have in the ECDS



T04. Concession Table (non-agricultural products)							
Version	TL (Tariff line number)	Description	Base Duty	Base duty binding	New bound duty AV	New Implemen- tation From	New Implemen- tation To
1	5 (1)	15 (2)	23 (3A)	24 (3B)	36 (4)	47 (5A)	48 (5B)
...
02M	2805	Alkali or					
02M	28051	- Alkali c					
02M	28051100	---Sodi	45	U	30.0	20??	20??
02M	28051200	---Calc	40	B	20.0	20??	20??
02M	28051900	---Othe	45	B	20.0	20??	20??
...

34

May Have in the ECDS



T04. Concession Table (non-agricultural products)

Version	TL (Tariff line number)	Description	Base Duty	Base duty binding	Paragraph	Sectoral duty	Sectoral implementation to	New bound duty AV	New INR
1	5 (1)	15 (2)	23 (3A)	24 (3B)	27	34	35	36 (4)	45 (6)
...
02M	2805	Alkali or							
02M	28051	- Alkali c							
02M	28051100	---Sodi	45	U				10.0	xxx
02M	28051200	---Calc	40	B	7A2			40.0	
02M	28051900	---Othe	45	B		0	20??	20.0	
...
xxx									

xxx ISO code for Member negotiating the INR

35

Contents



Introduction to Scheduling

Process, ENF and ECDS, status of work



NAMA Electronic Negotiating File

Data, tables structure, columns



Demonstration –

How to Prepare NAMA Draft Schedules

Step-by-step guide to prepare the ECDS from the ENF

36