



Experience in the Public Employment Service Center and with Private Partners

Mr. San-Quei LIN
Director General

Bureau of Employment & Vocational Training

Seoul, Korea

December 3, 2010



Agenda

簡報大綱

Briefing

簡介

Job Descriptions

任務職掌

2010 Employment Promotion Measures

2010 新就業措施

Visions and Expectations

願景與展望

Conclusions

結論





簡介

Briefings

1

BEVT VTC & PES System 隸屬體系

2

Mindsets 經營理念

3

Jurisdictions 服務轄區

4

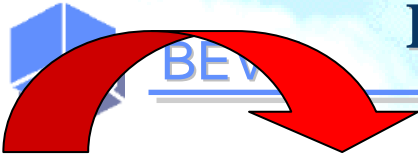
Organizational Structure 組織編制

5

Full-fledged One-stop Operational Centers
全方位的區域運籌中心

6

FIVE Service Sections 各站五大服務區塊



Council of Labour Affairs

勞工委員會

Bureau of Employment and Vocational Training

職業訓練局

Taishan Vocational Training Center

泰山職業訓練中心

Northern Vocational Training Center

北區職業訓練中心

Central Vocational Training Center

中區職業訓練中心

Southern Vocational Training Center

南區職業訓練中心

Taoyuan Vocational Training Center

桃園職業訓練中心

Tainan Vocational Training Center

台南職業訓練中心

**Employment Services Center,
Taipei-Keelung-Yilan-Hualien-Kinmen-Hatsu Region**

北基宜花金馬區就業服務中心

**Employment Services Center,
Taoyuan-Hsinchu-Miaoli Region**

桃竹苗區就業服務中心

**Employment Services Center,
Taichung-Changhua-Nantou Region**

中彰投區就業服務中心

**Employment Services Center,
Yunlin-Chiayiu-Tainan Region**

雲嘉南區就業服務中心

**Employment Services Center,
Kaohsiung-Pingtung-Penghu-Taitung Region**

高屏澎東區就業服務中心

National Employment Service Centers & service areas

全國就業服務中心及服務轄區

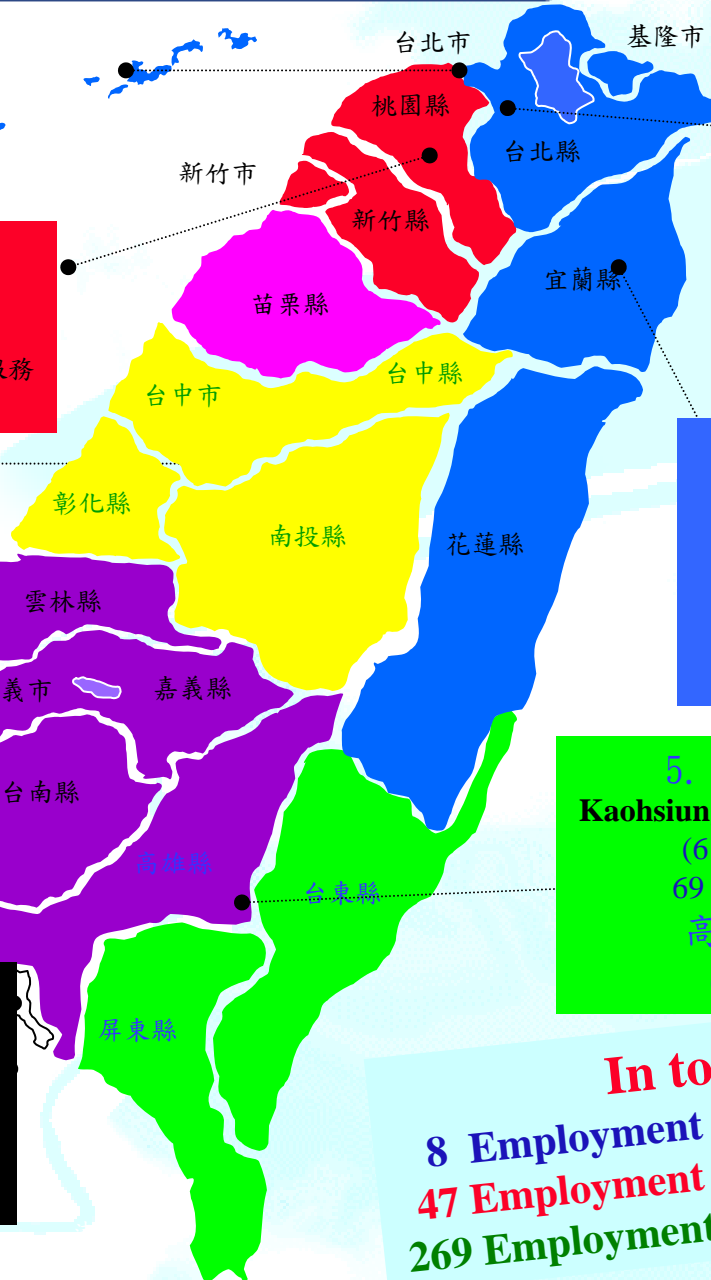
Employment Service Center, Taipei
City Hall (7 Employment service stations, 2 Employment service counters)
 臺北市政府勞工局就業服務中心
 (7就服站、5就服台)

1. Employment Service Center, -
Taoyuan-Hsinchu-Miaoli Region
 (5 Employment service stations, 39 Employment service counters)
 桃竹苗區就業服務中心 (5就服站、39就服台)

2. Employment Service Center,
Taichung-Changhua-Nantou Region
 (6 Employment service stations, 47 Employment service counters)
 中彰投區就業服務中心 (6就服站、47就服台)

3. Employment Service Center,
Yunlin-Chiayi-Tainan Region
 (7 Employment service stations, 58 Employment service counters)
 雲嘉南區就業服務中心
 (7就服站、58就服台)

Employment Service Center, Kaohsiung City
Hall (5 Employment service stations, 1 Employment service counter, 1 Employment liaison office)
 高雄市政府勞工局訓練就業服務中心 (5就服站、3就服台)



Employment Service Center,
Taipei Country Hall (2 Employment service stations, 6 Employment service counters)
 臺北縣府就業服務中心
 (2就服站、6就服台)

4. Employment Services Center,
Taipei-Keelung-Yilan-Hualien-Kinmen-Hatsu Region
 (8 Employment service stations, 43 Employment service counters)
 北基宜花金馬區就業服務中心
 (9就服站、42就服台)

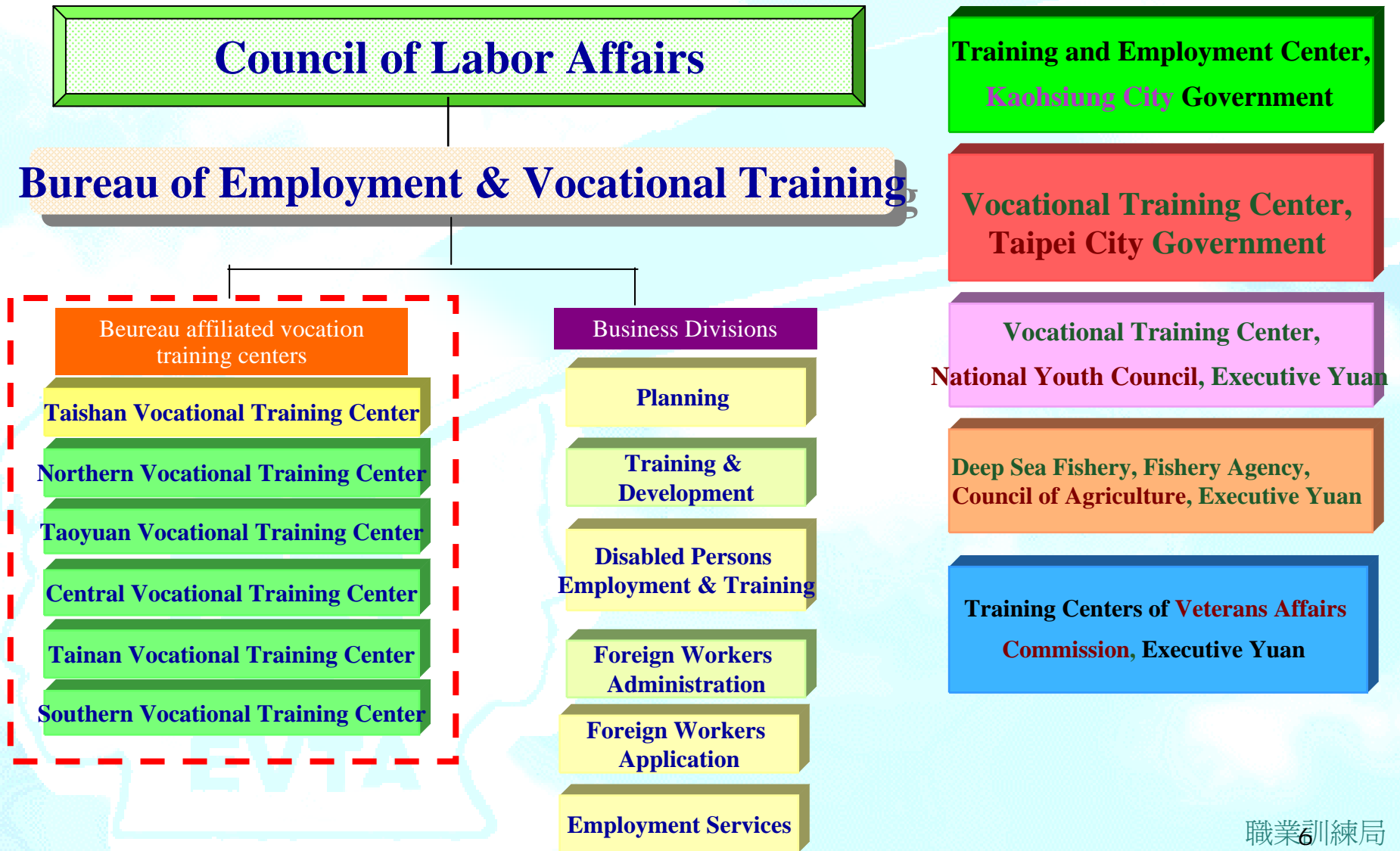
5. Employment Service Center, -
Kaohsiung-Pingtung-Penghu-Taitung Region
 (6 Employment service stations, 69 Employment service counters)
 高屏澎東區就業服務中心
 (6就服站、69就服台)

In total:
8 Employment Service Center
47 Employment service stations,
269 Employment service counters



BEVT Public Vocational Training System

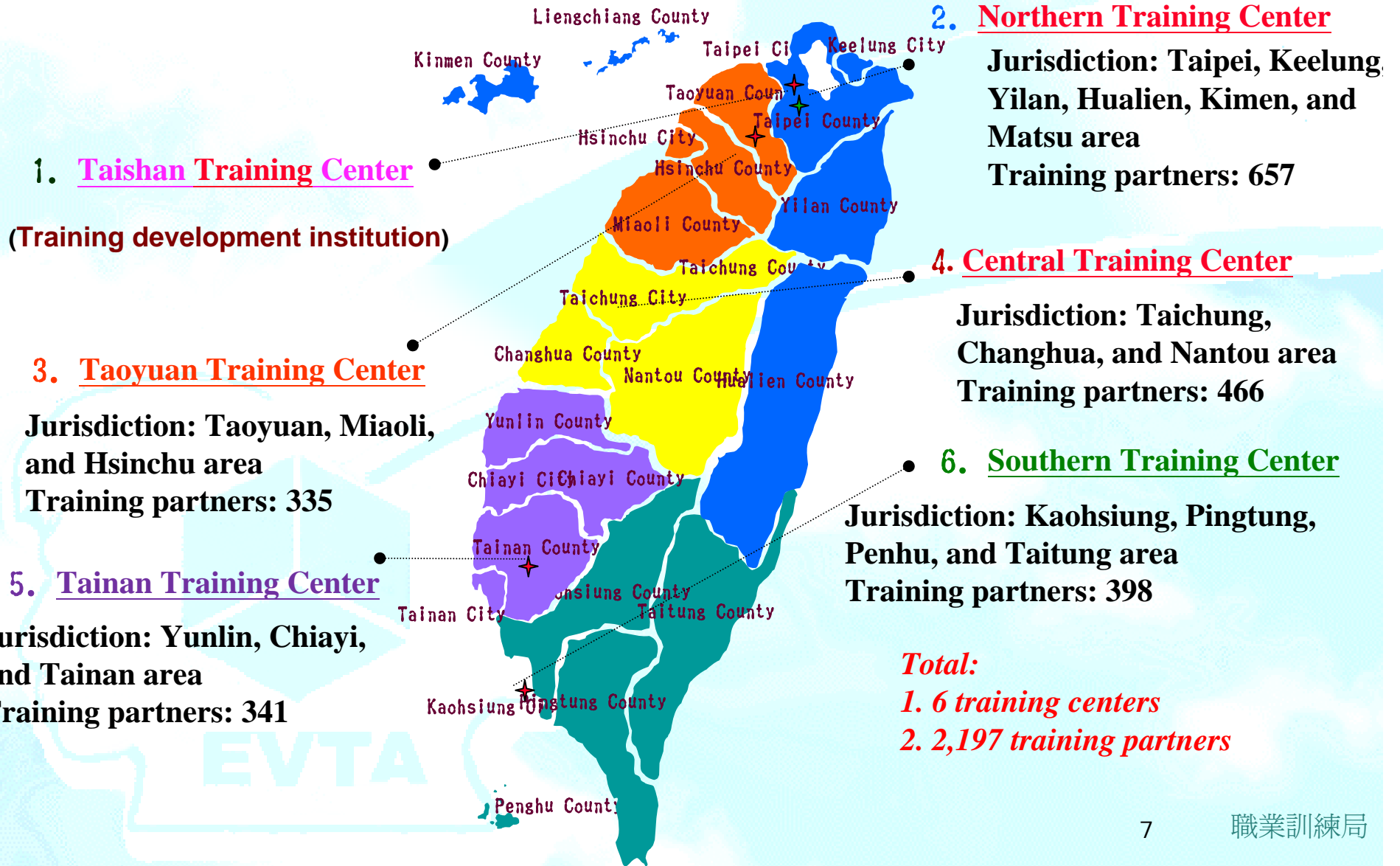
BEVT: 6 Bureau affiliated **training centers** and 5 public **vocational training center** with 5 other VTCs in other competent authorities

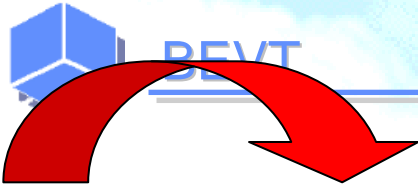




BEVT

Training Centers and Training Partners under the Bureau of Employment and Vocational Training, Council of Labor Affairs





Mindsets 經營理念

Visions

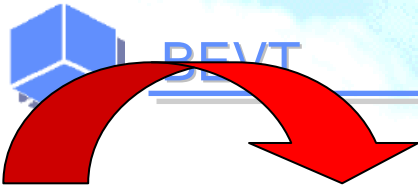
Profession, Enthusiasm, Innovation,
Excellence

Be **the best**

employment service center

願景

專業、熱誠、創新、卓越—
成為最優質的就業服務中心



Missions

Integrated the available resources &
Bridge the enterprise and workforce to
achieve

“Right man for the Right job”

使命

整合資源成為企業與勞動者的橋梁，達成適才適
所的服務使命。

PES: Regional Resources Integrator

- Media to broadcast employment service information, establishing professional images to enhance the public **awareness of PES' services.**

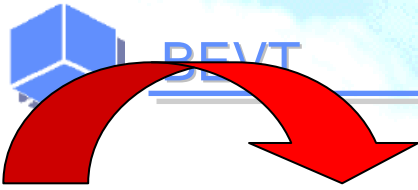
運用媒體發佈就業服務相關訊息，形塑中心專業形象，以加強社會大眾對中心服務之了解。

- Being the regional operational center to **integrate jurisdictional resources** and wield the functions of job matching.

運用區域運籌中心為基石，聯結轄區內資源網路，發揮就業媒合功能。

- Introduce **TTQS** to establish training quality management system, implement training effectiveness and strengthen staffs' competency.

導入TTQS，建立訓練品質管理系統，落實訓練效益，及強化人員職能。



Satisfy both Employers & Employees

- Provide **professional and customized** service to **employers**, swift feedback to employers recruitment demand, creating good interactions, using innovative way to meet enterprises' demands, and being the **efficient problem-solvers**.

提供專業、客製化的雇主服務，即時回應廠商徵才需求，營造良好互動關係，以創新方式經營標竿或特色企業，並整合連結各項資源與工具供企業運用，型塑本中心優質之雇主服務專業形象。

- Provide **individual & customized** employment counseling service and promote stable employment to both Employees & Employers .

提供個別化就業諮詢服務，促進穩定就業。

A full fledged regional resources integrator

全方位的區域運籌中心

