

NH



Investor Presentation

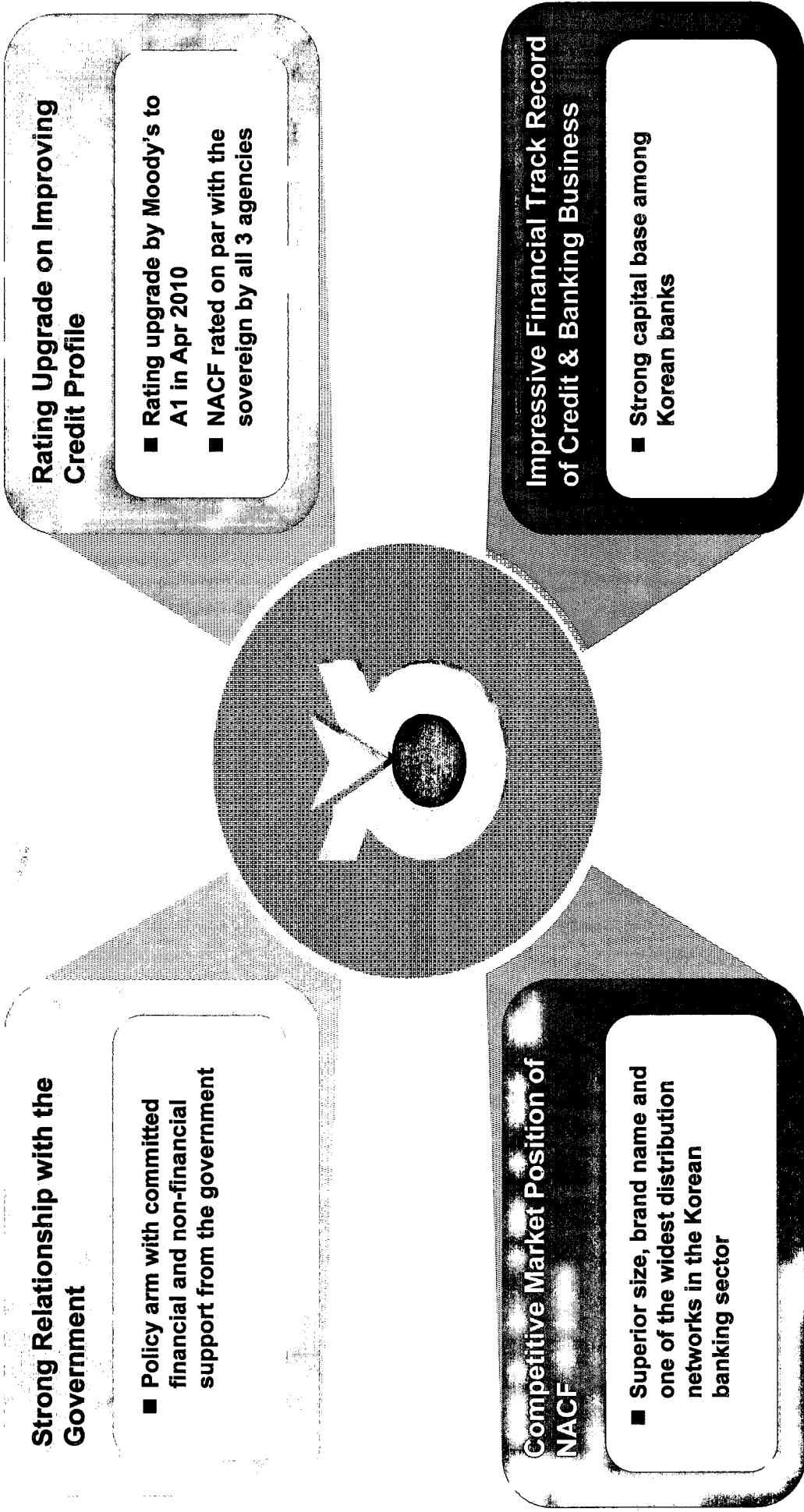
June 2010

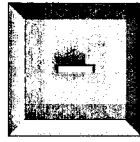
Disclaimer



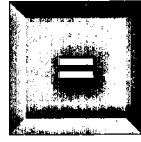
- These presentation materials have been prepared by National Agricultural Cooperative Federation ("NACF"), solely for the use at this presentation and have not been independently verified.
- This presentation is being communicated only to persons who have professional experience in matters relating to investments and to persons to whom it may be lawful to communicate it (all such persons being referred to as "relevant persons"). This presentation is only directed at relevant persons and any investment or investment activity to which the presentation relates is only available to relevant persons or will be engaged in only with relevant persons. Solicitations resulting from this presentation will only be responded to if the person concerned is a relevant person. Other persons should not rely or act upon this presentation or any of its contents.
- You agree to keep the contents of this presentation strictly confidential. This presentation material is highly confidential, is being presented solely for your information and may not be copied, reproduced or redistributed to any other person in any manner. In particular, this presentation may not be taken or transmitted into Canada or Japan or distributed, directly or indirectly, in Canada or Japan. Further, this presentation should not be distributed to U.S. persons except (1) to qualified institutional buyers in reliance on the exemption from the registration requirements of the U.S. Securities Act of 1933, as amended (the "Securities Act") provided by Rule 144A and (2) to non-U.S. persons outside the United States as defined in Regulation S of the Securities Act.
- No representations or warranties, express or implied, are made as to, and no reliance should be placed on, the accuracy, fairness or completeness of the information presented or contained in this presentation. Neither NACF nor any of its affiliates, advisers or representatives accepts any responsibility whatsoever for any loss or damage arising from any information presented or contained in this presentation. The information presented or contained in this presentation is current as of the date hereof and is subject to change without notice and its accuracy is not guaranteed. Neither NACF nor any of its affiliates, advisers or representatives make any undertaking to update any such information subsequent to the date hereof. This presentation should not be construed as legal, tax, investment or other advice.
- In addition, certain information and statements made in this presentation contain "forward-looking statements." Such forward-looking statements can be identified by the use of forward-looking terminology such as "anticipate," "believe," "considering," "depending," "estimate," "expect," "intend," "plan," "planning," "planned," "project," "trend," and similar expressions. All forward-looking statements are NACF's current expectation of future events and are subject to a number of factors that could cause actual results to differ materially from those described in the forward-looking statements. Caution should be taken with respect to such statements and you should not place undue reliance on any such forward-looking statements.
- Certain data in this presentation was obtained from various external data sources, and NACF has not verified such data with independent sources. Accordingly, NACF makes no representations as to the accuracy or completeness of that data, and such data involves risks and uncertainties and is subject to change based on various factors.
- This presentation does not constitute an offer or invitation to purchase or subscribe for any securities of NACF and neither any part of this presentation nor any information or statement contained herein shall form the basis of or be relied upon in connection with any contract or commitment whatsoever. Any decision to purchase securities in any offering of securities of NACF should be made solely on the basis of the information contained in the offering document [which may be] published or distributed in connection with such offering.
- By participating in this presentation you agree to be bound by the foregoing limitations.

Key Investment Highlights

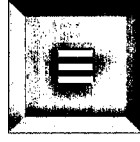




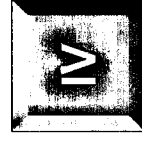
Korean Economy Recovering Fast



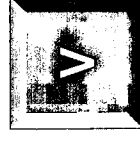
Overview of NACF



Strong Relationship with the Government



NACF's Competitive Market Position



Robust Financial Performance of C&B Business



Korean Economy Recovering Fast

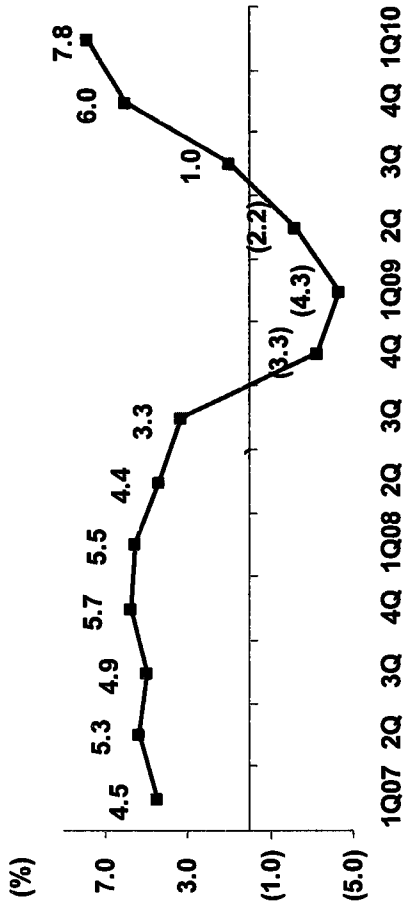


Korean Economy on Fast Track to Strong Recovery



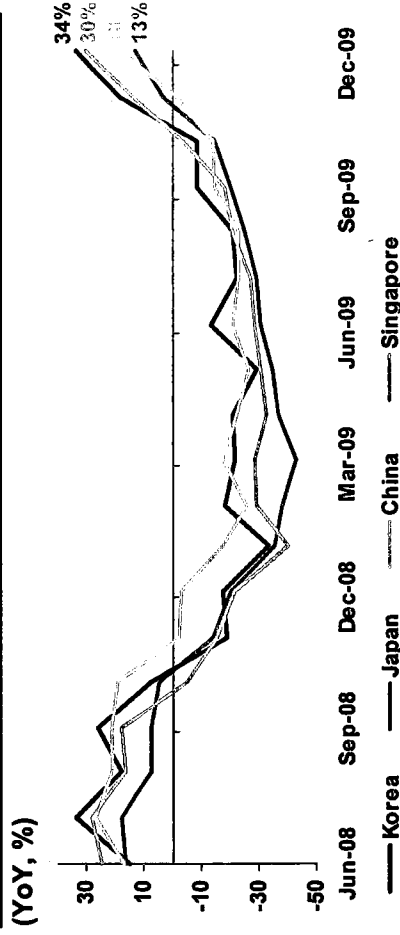
■ The Korean economy has weathered the global financial crisis well and is now on a fast track to a strong recovery

GDP Growth Rate



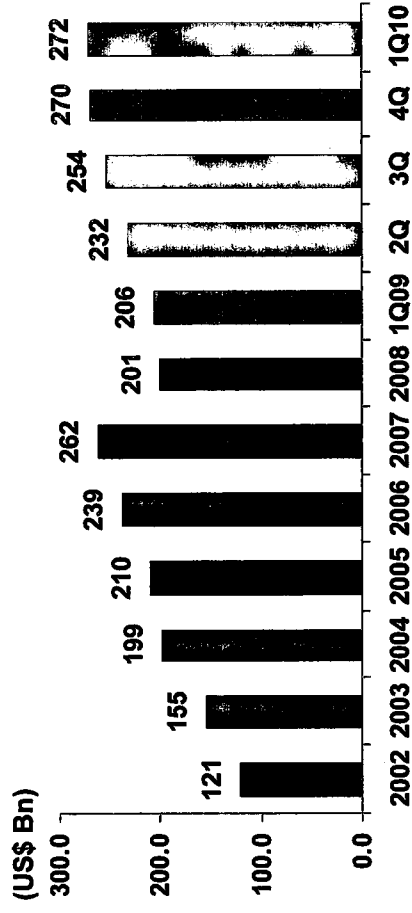
Source: Bank of Korea

Export Growth



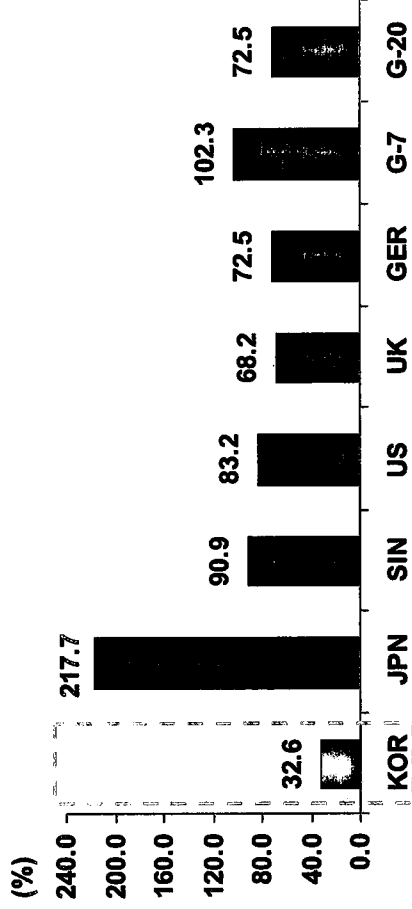
Source: IHS Global Insight

FX Reserves



Source: Bank of Korea

Public Debt to GDP (2009A)



Source: IMF