



24-HOUR PUBLIC WEATHER FORECAST

ISSUED AT : 5:00 AM 05 AUGUST 2010

VALID BEGINNING : 5:00 AM TODAY UNTIL 5:00 AM TOMORROW

SYNOPSIS: AT 4:00 AM TODAY, TROPICAL DEPRESSION "DOMENG" WAS ESTIMATED BASED ON SATELLITE AND SURFACE DATA AT 240 KM SOUTHEAST OF BASCO, BATANES (19.3°N 124.2°E) WITH MAXIMUM WINDS OF 55 KPH NEAR THE CENTER. IT IS FORECAST TO MOVE WEST SOUTHWEST AT 15 KPH. MEANWHILE A LOW PRESSURE AREA (LPA) WAS ESTIMATED AT 940 KM EAST OF LUZON (16.5°N 132.5°E).

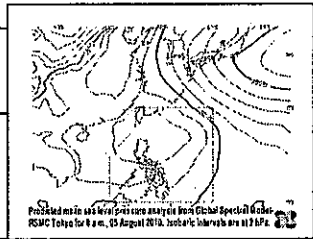
FORECAST: NORTHERN LUZON WILL EXPERIENCE RAINS WITH GUSTY WINDS WITH MODERATE TO ROUGH SEAS. THE REST OF COUNTRY WILL HAVE MOSTLY CLOUDY SKIES WITH SCATTERED RAINSHOWERS AND THUNDERSTORMS BECOMING CLOUDY WITH WIDESPREADS RAINS OVER PALAWAN AND WESTERN VISAYAS.

MODERATE TO STRONG WINDS BLOWING FROM THE WEST TO SOUTHWEST WILL PREVAIL OVER THE REST OF LUZON AND FROM THE SOUTHWEST OVER THE REST OF THE COUNTRY. THE COASTAL WATERS ALONG THESE AREAS WILL BE MODERATE TO ROUGH.

PAGTAYA: ANG KALAKHANG MAYNILA AY MAKAKARANAS NG MADALAS NA MAULAP NA KALANGITAN NA MAY PAG-ULAN AT PAGKULOG-PAGKIDLAT. KATAMTAMAN HANGGANG SA MALAKAS NA HANGIN MULA SA KANLURAN HANGGANG TIMOG-KANLURAN ANG IIRAL AT ANG LOOK NG MAYNILA AY KATAMTAMAN HANGGANG SA MAALON. ANG TINATAYANG AGWAT NG TEMPERATURA AY MULA 24 HANGGANG 30 ANTAS NG CELSIUS (75°F HANGGANG 86°F).

ANG HILAGANG LUZON AY MAKAKARANAS NG MGA PAG-ULAN NA MAY PAGBUGSO NG HANGIN NA MAY KATAMTAMAN HANGGANG SA MAALONG KARAGATAN. ANG NALALABING BAHAGI NG BANSA AY MAGKAKARON NG MADALAS NA MAULAP NA KALANGITAN NA MAY KALAT-KALAT NA PAG-ULAN AT PAGKULOG-PAGKIDLAT NA MAGIGING MAULAP NA MAY MALAWAKANG PAG-ULAN SA PALAWAN AT KANLURANG KABISAYAAN.

KATAMTAMAN HANGGANG SA MALAKAS NA HANGIN MULA SA KANLURAN HANGGANG TIMOG-KANLURAN ANG IIRAL SA NATITIRANG BAHAGI NG LUZON AT MULA SA TIMOG-KANLURAN SA NALALABING BAHAGI NG BANSA. ANG MGA BAYBAYING-DAGAT SA MGA LUGAR NA ITO AY MAGIGING KATAMTAMAN HANGGANG SA MAALON.

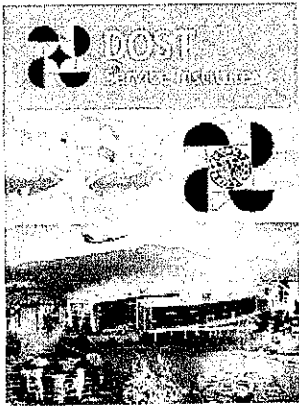


24-Hour Weather Forecast and Extended Weather Outlook for Selected Cities:

CITIES	24-Hr Weather, Winds & Sea Condition AUGUST 05 (from 5AM today until 5AM tomorrow)		Extended Weather Outlook (Time Duration: 5AM until 5AM the following day)				
			AUGUST 06	AUGUST 07	AUGUST 08	AUGUST 09	
Metro Manila	24 – 30°C	Moderate to Strong: West - Southwest Manila Bay: Moderate to Rough	23 – 29°C	23 – 30°C	24 – 30°C	24 – 31°C	
Tuguegarao City	22 – 32°C	Rains with Gusty winds	21 – 31°C	21 – 31°C	22 – 32°C	22 – 32°C	
Laoag City	24 – 32°C	Rains with Gusty winds	23 – 31°C	23 – 31°C	24 – 32°C	24 – 32°C	
Baguio City	15 – 24°C	Rains with Gusty winds	14 – 23°C	14 – 23°C	15 – 24°C	16 – 24°C	
SBMA (Olongapo) / Clark Zone (Angeles C)	23 – 31°C	Moderate to Strong: West - Southwest Subic Bay: Moderate	22 – 30°C	23 – 31°C	23 – 31°C	24 – 32°C	
Tagaytay City	20 – 28°C	Moderate to Strong: West - Southwest	19 – 27°C	20 – 28°C	20 – 28°C	21 – 29°C	
Legaspi City	25 – 31°C	Moderate to Strong: West - Southwest Coastal Waters: Moderate to Rough	24 – 30°C	24 – 31°C	24 – 31°C	24 – 32°C	
Puerto Princesa City	24 – 32°C	Moderate to Strong: Southwest Coastal Waters: Moderate to Rough	23 – 31°C	24 – 31°C	24 – 31°C	24 – 32°C	
Iloilo City/Bacolod City	23 – 30°C	Moderate to Strong: Southwest Coastal Waters: Moderate to Rough	22 – 29°C	23 – 30°C	24 – 31°C	24 – 32°C	
Metro Cebu	24 – 31°C	Moderate to Strong: Southwest Coastal Waters: Moderate to Rough	23 – 30°C	24 – 31°C	24 – 31°C	24 – 32°C	
Tacloban City	24 – 29°C	Moderate to Strong: Southwest Coastal Waters: Moderate to Rough	23 – 28°C	24 – 29°C	24 – 30°C	24 – 31°C	
Cagayan de Oro City	23 – 30°C	Moderate to Strong: Southwest Coastal waters: Moderate to Rough	22 – 29°C	23 – 30°C	23 – 30°C	23 – 31°C	
Metro Davao	23 – 30°C	Moderate to Strong: Southwest Coastal Waters: Moderate to Rough	22 – 29°C	23 – 30°C	24 – 30°C	24 – 31°C	
Zamboanga City	22 – 29°C	Moderate to Strong: Southwest Coastal waters: Moderate to Rough	21 – 29°C	20 – 29°C	21 – 30°C	22 – 31°C	
LEGEND:							
	- mostly sunny		- pc to at times cloudy with isolated rash		- cloudy with rash / tsm		- occasional rains
	- partly cloudy (pc) skies		- mostly cloudy (mc) with scattered rash / tsm		- cloudy with rainshowers		- rains / monsoon rains
	- pc to at times cloudy with isolated rainshowers & thunderstorms (rash / tsm)		- mc with rainshowers		- light rains/ light passing rains		- rains with gusty winds
							- stormy
EXTREMES OF TEMPERATURE AND RELATIVE HUMIDITY FOR THE 24-HR PERIOD ENDING AT 8:00 PM TODAY AND RECORDED AT PAGASA WEATHER STATION, SCIENCE GARDEN , DILIMAN, QUEZON CITY:							
MAX. TEMPERATURE AT 11:00 AM YESTERDAY — 32.0 °C (89.60 °F)			MAXIMUM RELATIVE HUMIDITY AT 2:00 AM YESTERDAY — 93 %				
MIN. TEMPERATURE AT 6:00 AM YESTERDAY — 24.8 °C (76.64 °F)			MINIMUM RELATIVE HUMIDITY AT 11:00 AM YESTERDAY — 67 %				
TIDAL PREDICTIONS ALONG MANILA BAY (Courtesy of NAMRIA)			OVER METRO MANILA:				
LOW TIDE TODAY AT 2:31 PM	0.24 METER		SUNRISE / SUNSET		MOONRISE / MOONSET & ILLUMINATION		
HIGH TIDE TOMORROW AT 5:35 AM	1.24 METER		SUNRISE TODAY : 5:40 AM		MOONRISE TOMORROW : 1:21 AM		
LOW TIDE TOMORROW AT 3:23 PM	0.11 METER		SUNSET TODAY : 6:24 PM		MOONSET TOMORROW : 2:47 PM		
					ILLUMINATION TOMORROW : 22 %		

END OF FORECAST

PREPARED BY: MF PALAFOX / GM QUITLONG / SEB JAVIER / CF PEREZ



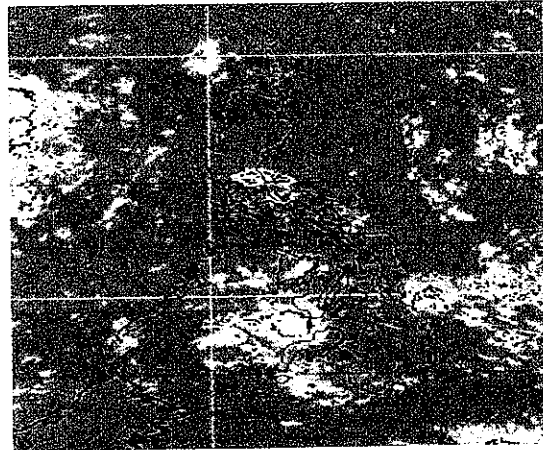
DOST Agencies DOST Regional Offices Search DOST

[DOST HOME](#) / [DOST-MAIL](#) / [DOSTBOARD](#) / [DOST HELPCENTER](#)

PAGASA Philippine Atmospheric, Geophysical & Astronomical Services Administration

Please refresh the page to ensure up-to-date information

PAGASA-DOST MTSAT-EIR Satellite Image for 7 a.m., 02 Aug 2010



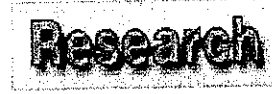
For the latest in weather news, call our new 24-hour hotline at 433-ULAN (433-8526)

SMART subscribers can now receive announcements and advisories thru SMS
[More details](#)

Press Release

- HOME
- ABOUT US
- REAL-TIME WEATHER
- FLOOD FORECAST
- CLIMATOLOGY
- DISASTER REDUCTION
- ASTRONOMY

Monday, August 02, 2010
Philippine Standard Time



Weather
Issued at: 5:00 a.m., 02 August 2010
[\(click here to download 5 a.m. forecast-Adobe PDF format\)](#)
Synopsis : Intertropical Convergence Zone (ITCZ) affecting Visayas and Mindanao.

Metro Manila

	Light to Moderate Southwest Manila Bay: Slight to Moderate
24°C to 33°C	

[More Weather](#)

Tropical Cyclone Update
As of today, Monday, 02-Aug-2010 07:48:40 PHT no tropical cyclone existing within the Philippine Area of Responsibility (PAR).

- Flood Forecasts**
- [Hydrological Forecasts](#)
 - [Basin Flood Bulletins / Advisories](#)
 - [Dam Status](#)

Astronomical Diary August 2010

August is one of the most popular month of the year to observe meteor showers. Occasionally, an exceptional shower may show tens or even hundreds of meteors per minute, but around 50 meteors per hour is more typical...

[More](#)

Special Weather Outlook on the State of the Nation Address (July 26, 2010)

The dominant weather system that will affect the country in the next 3-4 days is the Intertropical Convergence Zone (ITCZ) which is expected to oscillate over Luzon, Visayas, and Mindanao.

[More](#)

Special Weather Outlook for the Presidential Inaugural Ceremony (June 29-30, 2010)

The Intertropical Convergence Zone (ITCZ) is the dominant weather system to affect most parts of the country. This weather system will move northward due to the expected approach of a Low Pressure Area (LPA) to the Visayas...

[More](#)

Special Weather Outlook for the Independence Day Celebration and Balik Eskwela 2010 (June 12-15, 2010)

Generally warm and humid weather condition is expected over most parts of Luzon and Visayas with rainshowers and thunderstorms mostly in the afternoon or evening. However, extreme Northern Luzon will be mostly cloudy with occasional rains due to the effect of the monsoon trough over Taiwan.

[More](#)

Onset of the 2010 Rainy Season 06 June 2010

The development of a series of low pressure systems, also known as heat lows, in the southern part of mainland Asia that linked with the low pressure area near Northern Luzon has generated and sustained the southwesterly



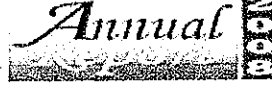
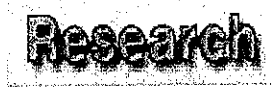
DOST Agencies DOST Regional Offices Search DOST

[DOST HOME](#) [DOST-MAIL](#) [DOSTBOARD](#) [DOST HELPCENTER](#)

PAGASA Philippine Atmospheric, Geophysical & Astronomical Services Administration

- HOME
- ABOUT US
- REAL-TIME WEATHER
- FLOOD FORECAST
- CLIMATOLOGY
- DISASTER REDUCTION
- ASTRONOMY

Tuesday, August 03, 2010
Philippine Standard Time



Weather

Issued at: 5:00 a.m., 03 August 2010
(click here to download 5 a.m. forecast-Adobe PDF format)

Synopsis : At 2:00 a.m. today, the Low Pressure Area (LPA) was estimated based on satellite and surface data at 570 km East Northeast of Catanduanes (14.5°N 130.0°E) embedded along the Intertropical Convergence Zone (ITCZ) affecting Central and Southern Luzon, Visayas and Mindanao.

Metro Manila

 25°C to 34°C	Light to Moderate Northwest Manila Bay: Slight to Moderate
------------------	---

[More Weather](#)

Tropical Cyclone Update

As of today, Tuesday, 03-Aug-2010 08:03:24 PHT no tropical cyclone existing within the Philippine Area of Responsibility (PAR).

Flood Forecasts

- Hydrological Forecasts
- Basin Flood Bulletins / Advisories
- Dam Status

Astronomical Diary August 2010

August is one of the most popular month of the year to observe meteor showers. Occasionally, an exceptional shower may show tens or even hundreds of meteors per minute, but around 50 meteors per hour is more typical...

[More](#)

Special Weather Outlook on the State of the Nation Address (July 26, 2010)

The dominant weather system that will affect the country in the next 3-4 days is the Intertropical Convergence Zone (ITCZ) which is expected to oscillate over Luzon, Visayas, and Mindanao.

[More](#)

Special Weather Outlook for the Presidential Inaugural Ceremony (June 29-30, 2010)

The Intertropical Convergence Zone (ITCZ) is the dominant weather system to affect most parts of the country. This weather system will move northward due to the expected approach of a Low Pressure Area (LPA) to the Visayas...

[More](#)

Special Weather Outlook for the Independence Day Celebration and Balik Eskwela 2010 (June 12-15, 2010)

Generally warm and humid weather condition is expected over most parts of Luzon and Visayas with rainshowers and thunderstorms mostly in the afternoon or evening. However, extreme Northern Luzon will be mostly cloudy with occasional rains due to the effect of the monsoon trough over Taiwan.

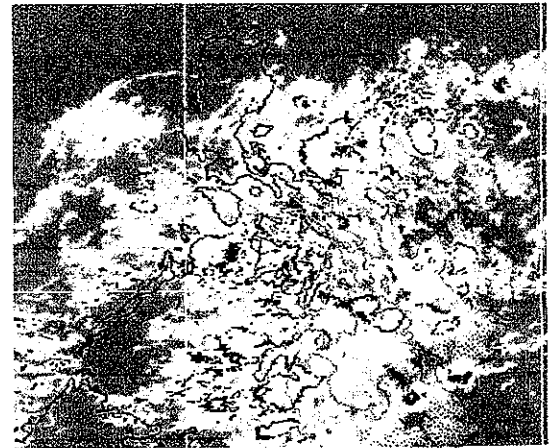
[More](#)

Onset of the 2010 Rainy Season 06 June 2010

The development of a series of low pressure systems, also known as heat lows, in the southern part of mainland Asia that linked with the low pressure area near Northern Luzon has generated and sustained the southwesterly

Please refresh the page to ensure up-to-date information

PAGASA-DOST MTSAT-EIR Satellite Image for 7 a.m., 03 Aug 2010



For the latest in weather news, call our new 24-hour hotline at 433- U (02) 334-3333

SMART subscribers can now receive announcements and advisories thru SMS
[More details](#)

Press Release



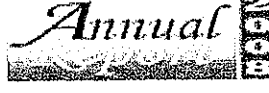
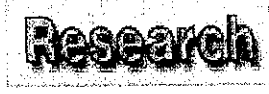
DOST Agencies DOST Regional Offices Search DOST

[DOST HOME](#) [DOST-MAIL](#) [DOSTBOARD](#) [DOST HELPCENTER](#)

PAGASA Philippine Atmospheric, Geophysical & Astronomical Services Administration

- HOME
- ABOUT US
- REAL-TIME WEATHER
- FLOOD FORECAST
- CLIMATOLOGY
- DISASTER REDUCTION
- ASTRONOMY

Wednesday, August 04, 2010
Philippine Standard Time



Weather

Issued at: 5:00 a.m., 04 August 2010
([click here to download 5 a.m. forecast-Adobe PDF format](#))

Synopsis : At 2:00 a.m. today, Tropical Depression "Domeng" was estimated based on satellite and surface data at 460 km East Northeast of Virac, Catanduanes (15.7°N 128.4° E) with maximum winds of 45 kph near the center. It is forecast to move Northwest at 11 kph. A Low Pressure Area (LPA) was estimated at 670 km East Northeast of Basco, Batanes (22.8°N 128.9° E).

Metro Manila

 25°C to 31°C	Light to Moderate Northwest Manila Bay: Slight to Moderate
------------------	---

[More Weather](#)

Tropical Cyclone Update

Issued at: 11:00 p.m., 03 August 2010
(Valid until the next bulletin to be issued at 11 a.m. today)
Tropical Depression "Domeng" has accelerated slightly as it continues to move towards Northern Luzon.

[More Update](#)

Tropical Cyclone Warning for Shipping

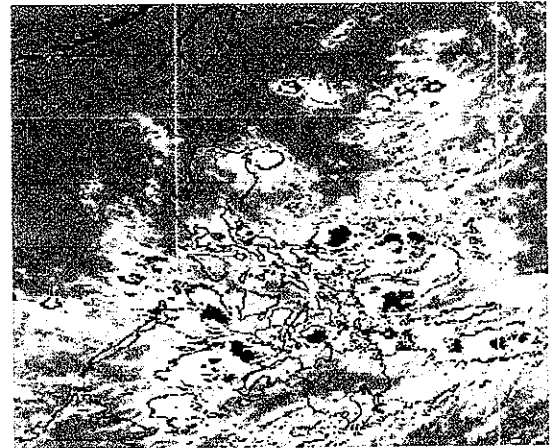
Issued at: 2:00 a.m., 04 August 2010
[More Update](#)

Flood Forecasts

- Hydrological Forecasts
- Basin Flood Bulletins / Advisories
- Dam Status

Please refresh the page to ensure up-to-date information

PAGASA-DOST MTSAT-EIR Satellite Image for 6 a.m., 04 Aug 2010



For the latest in weather news, call our new 24-hour hotline at 433-ULAN (433-8526)

SMART subscribers can now receive announcements and advisories thru SMS
[More details](#)

Press Release

Astronomical Diary August 2010

August is one of the most popular month of the year to observe meteor showers. Occasionally, an exceptional shower may show tens or even hundreds of meteors per minute, but around 50 meteors per hour is more typical...

[More](#)

Special Weather Outlook on the State of the Nation Address (July 26, 2010)

The dominant weather system that will affect the country in the next 3-4 days is the Intertropical Convergence Zone (ITCZ) which is expected to oscillate over Luzon, Visayas, and Mindanao.

[More](#)

Special Weather Outlook for the Presidential Inaugural Ceremony (June 29-30, 2010)

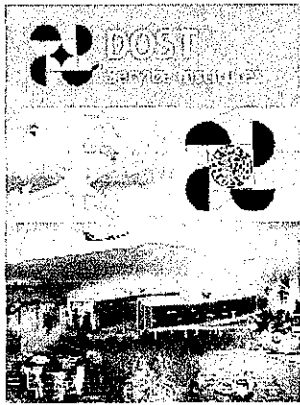
The Intertropical Convergence Zone (ITCZ) is the dominant weather system to affect most parts of the country. This weather system will move northward due to the expected approach of a Low Pressure Area (LPA) to the Visayas...

[More](#)

Special Weather Outlook for the Independence Day Celebration and Balik Eskwela 2010 (June 12-15, 2010)

Generally warm and humid weather condition is expected over most parts of Luzon and Visayas with rainshowers and thunderstorms mostly in the afternoon or evening. However, extreme Northern Luzon will be mostly cloudy with occasional rains due to the effect of the monsoon trough over Taiwan.

[More](#)



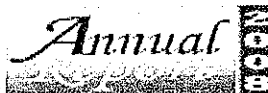
DOST Agencies DOST Regional Offices Search DOST

[DOST HOME](#) [DOST-MAIL](#) [DOSTBOARD](#) [DOST HELPCENTER](#)

PAGASA Philippine Atmospheric, Geophysical & Astronomical Services Administration

- HOME
- ABOUT US
- REAL-TIME WEATHER
- FLOOD FORECAST
- CLIMATOLOGY
- DISASTER REDUCTION
- ASTRONOMY

Thursday, August 05, 2010
Philippine Standard Time



Weather

Issued at: 5:00 a.m., 05 August 2010
(click here to download 5 a.m. forecast-Adobe PDF format)

Synopsis : At 4:00 a.m. today, Tropical Depression "Domeng" was estimated based on satellite and surface data at 240 km Southeast of Basco, Batanes (19.3°N 124.2°E) with maximum winds of 55 kph near the center. It is forecast to move West Southwest at 19 kph. Meanwhile a Low Pressure Area (LPA) was estimated at 940 km East of Luzon (16.5°N 132.5°E).

Metro Manila

 24°C to 30°C	Moderate to Strong West-Southwest Manila Bay: Moderate to Rough
------------------	---

[More Weather](#)

Tropical Cyclone Update

Issued at: 5:00 a.m., 05 August 2010
(Valid until the next bulletin to be issued at 5 a.m. tomorrow)
"Domeng" has weakened into a Tropical Depression as it continues to move towards Cagayan.
[More Update](#)

Gale Warning

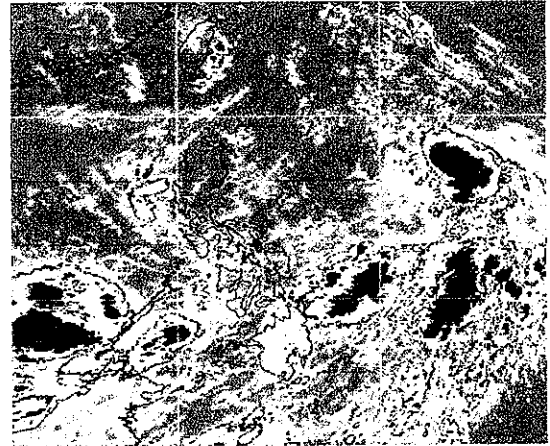
Issued at: 5:00 a.m., Today, 05 August 2010
Strong to gale force wind is expected to affect the western seaboard of Visayas.
[More...](#)

Flood Forecasts

- [Hydrological Forecasts](#)
- [Basin Flood Bulletins / Advisories](#)
- [Dam Status](#)

Please refresh the page to ensure up-to-date information

PAGASA-DOST MTSAT-EIR Satellite Image for 6 a.m., 05 Aug 2010



For the latest in weather news, call our new 24-hour hotline at 433-ULAN (433-9526)

SMART subscribers can now receive announcements and advisories thru SMS
[More details](#)

Press Release

Astronomical Diary
August 2010

August is one of the most popular month of the year to observe meteor showers. Occasionally, an exceptional shower may show tens or even hundreds of meteors per minute, but around 50 meteors per hour is more typical...

[More](#)

Special Weather Outlook on the State of the Nation Address
(July 26, 2010)

The dominant weather system that will affect the country in the next 3-4 days is the Intertropical Convergence Zone (ITCZ) which is expected to oscillate over Luzon, Visayas, and Mindanao.

[More](#)

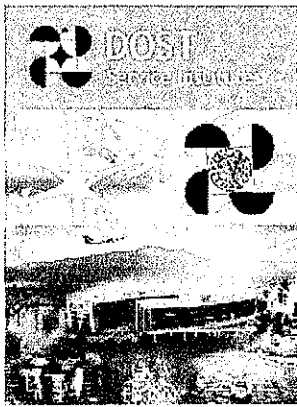
Special Weather Outlook for the Presidential Inaugural Ceremony
(June 29-30, 2010)

The Intertropical Convergence Zone (ITCZ) is the dominant weather system to affect most parts of the country. This weather system will move northward due to the expected approach of a Low Pressure Area (LPA) to the Visayas...

[More](#)

Special Weather Outlook for the Independence Day Celebration and Balik Eskwela 2010
(June 12-15, 2010)

Generally warm and humid weather condition is expected over most parts of Luzon and Visayas with rainshowers and thunderstorms mostly in the afternoon or evening. However, extreme Northern Luzon will be mostly cloudy with occasional rains due to the effect of the monsoon trough over Taiwan.



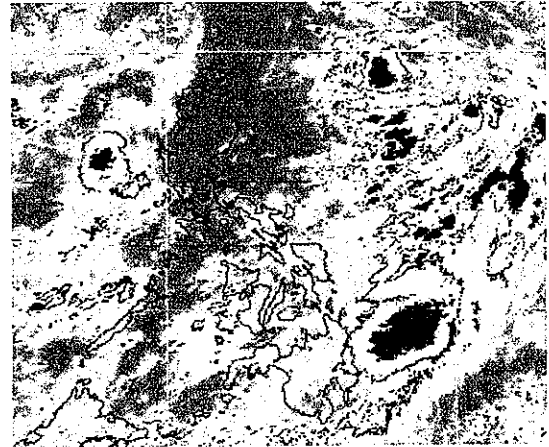
DOST Agencies DOST Regional Offices Search DOST

[DOST HOME](#) / [DOST-MAIL](#) / [DOSTBOARD](#) / [DOST HELPCENTER](#)

PAGASA Philippine Atmospheric, Geophysical & Astronomical Services Administration

Please refresh the page to ensure up-to-date information

PAGASA-DOST MTSAT-EIR Satellite Image for 6 a.m., 06 Aug 2010



For the latest in weather news, call our new 24-hour hotline at 433-ULAN (433-8526)

SMART subscribers can now receive announcements and advisories thru SMS [More details](#)

Press Release

Weather

Issued at: 5:00 a.m., 06 August 2010
([click here to download 5 a.m. forecast-Adobe PDF format](#))

Synopsis : At 2:00 a.m. today, "Domeng" was downgraded into a Low Pressure Area (LPA) and was estimated at 190 km West of Sinit, Ilocos Sur (17.5°N 118.5°E). Meanwhile, another Low Pressure Area (LPA) was estimated based on satellite and forecast data at 780 km East of Northern Luzon (18.0°N 130.0°E).

Metro Manila

	Moderate Southwest Manila Bay: Moderate
24°C to 33°C	

[More Weather](#)

Tropical Cyclone Update

As of today, Friday, 06-Aug-2010 07:12:54 PHT no tropical cyclone existing within the Philippine Area of Responsibility (PAR).

Flood Forecasts

- [Hydrological Forecasts](#)
- [Basin Flood Bulletins / Advisories](#)
- [Dam Status](#)

Astronomical Diary August 2010

August is one of the most popular month of the year to observe meteor showers. Occasionally, an exceptional shower may show tens or even hundreds of meteors per minute, but around 50 meteors per hour is more typical...

[More](#)

Special Weather Outlook on the State of the Nation Address (July 26, 2010)

The dominant weather system that will affect the country in the next 3-4 days is the Intertropical Convergence Zone (ITCZ) which is expected to oscillate over Luzon, Visayas, and Mindanao.

[More](#)

Special Weather Outlook for the Presidential Inaugural Ceremony (June 29-30, 2010)

The Intertropical Convergence Zone (ITCZ) is the dominant weather system to affect most parts of the country. This weather system will move northward due to the expected approach of a Low Pressure Area (LPA) to the Visayas...

[More](#)

Special Weather Outlook for the Independence Day Celebration and Balik Eskwela 2010 (June 12-15, 2010)

Generally warm and humid weather condition is expected over most parts of Luzon and Visayas with rainshowers and thunderstorms mostly in the afternoon or evening. However, extreme Northern Luzon will be mostly cloudy with occasional rains due to the effect of the monsoon trough over Taiwan.

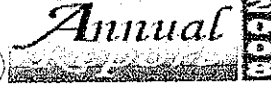
[More](#)

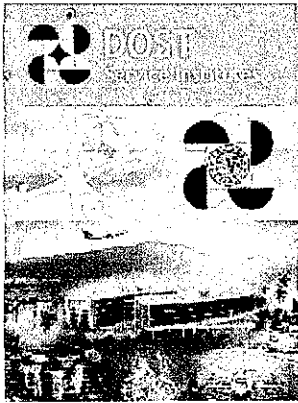
Onset of the 2010 Rainy Season 06 June 2010

The development of a series of low pressure systems, also known as heat lows, in the southern part of mainland Asia that linked with the low pressure area near Northern Luzon has generated and sustained the southwesterly

- HOME
- ABOUT US
- REAL-TIME WEATHER
- FLOOD FORECAST
- CLIMATOLOGY
- DISASTER REDUCTION
- ASTRONOMY

Friday, August 06, 2010
Philippine Standard Time





DOST Agencies [] DOST Regional Offices [] Search DOST []

DOST HOME \ DOST-MAIL \ DOSTBOARD \ DOST HELPCENTER \

PAGASA

Philippine Atmospheric, Geophysical & Astronomical Services Administration


- HOME
- ABOUT US
- REAL-TIME WEATHER
- FLOOD FORECAST
- CLIMATOLOGY
- DISASTER REDUCTION
- ASTRONOMY

Weather

Issued at: 5:00 a.m., 07 August 2010
[\(click here to download 5 a.m. forecast-Adobe PDF format\)](#)

Synopsis : At 2:00 a.m. today, Tropical Depression ESTER was estimated based on satellite and surface data at 210 km Southeast of Basco, Balanes (19.0°N 123.4°E) with maximum winds of 45 kph near the center. It is forecast to move west at 22 kph.

Metro Manila

 24°C to 32°C	Moderate to Strong Southwest Manila Bay: Moderate to Rough
---	---

[More Weather](#)

Tropical Cyclone Update

Issued at: 5:00 a.m., 07 August 2010
Tropical Depression Ester has maintained its strength as it moves towards Cagayan area.
[More Update](#)

Gale Warning

Issued at: 5:00 a.m., Today, 07 August 2010
Strong to gale force wind is expected to affect the western seaboard of Central Luzon, and the seaboard of Southern Luzon and Visayas.
[More...](#)

Flood Forecasts

- Hydrological Forecasts
- Basin Flood Bulletins / Advisories
- Dam Status

Astronomical Diary August 2010

August is one of the most popular month of the year to observe meteor showers. Occasionally, an exceptional shower may show tens or even hundreds of meteors per minute, but around 50 meteors per hour is more typical...

[More](#)

Special Weather Outlook on the State of the Nation Address (July 26, 2010)

The dominant weather system that will affect the country in the next 3-4 days is the Intertropical Convergence Zone (ITCZ) which is expected to oscillate over Luzon, Visayas, and Mindanao.

[More](#)

Special Weather Outlook for the Presidential Inaugural Ceremony (June 29-30, 2010)

The Intertropical Convergence Zone (ITCZ) is the dominant weather system to affect most parts of the country. This weather system will move northward due to the expected approach of a Low Pressure Area (LPA) to the Visayas...

[More](#)

Special Weather Outlook for the Independence Day Celebration and Balik Eskweña 2010 (June 12-15, 2010)

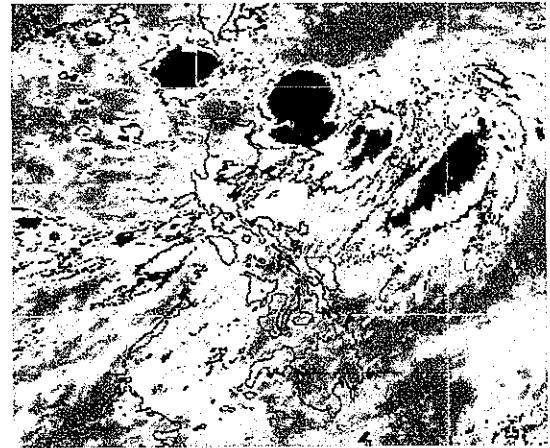
Generally warm and humid weather condition is expected over most parts of Luzon and Visayas with rainshowers and thunderstorms mostly in the afternoon or evening. However, extreme Northern Luzon will be mostly cloudy with occasional rains due to the effect of the monsoon trough over Taiwan.

[More](#)

Onset of the 2010 Rainy Season

Please refresh the page to ensure up-to-date information

PAGASA-DOST MTSAT-EIR Satellite Image for 6 a.m., 07 Aug 2010

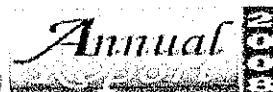


For the latest in weather news,
call our new 24-hour hotline at
433-ULAN (433-8526)

SMART subscribers can now receive announcements
and advisories thru SMS
[More details](#)

Press Release

Saturday, August 07, 2010
Philippine Standard Time





DOST Agencies DOST Regional Offices Search DOST

[DOST HOME](#) / [DOST-MAIL](#) / [DOSTBOARD](#) / [DOST HELPCENTER](#)

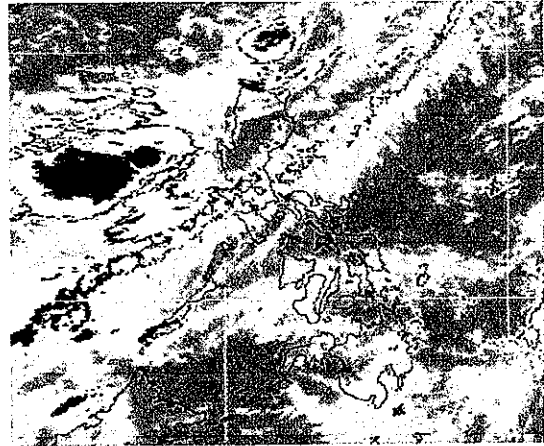
PAGASA

Philippine Atmospheric, Geophysical & Astronomical Services Administration

Please refresh the page to ensure up-to-date information

Weather
Issued at: 5:00 a.m., 10 August 2010
[\(click here to download 5 a.m. forecast-Adobe PDF format\)](#)
Synopsis : Southwest Monsoon affecting Luzon.

PAGASA-DOST MTSAT-EIR Satellite Image for 7 a.m., 10 Aug 2010



For the latest in weather news, call our new 24-hour hotline at 433-ULAN (433-8526)

- HOME
- ABOUT US
- REAL-TIME WEATHER
- FLOOD FORECAST
- CLIMATOLOGY
- DISASTER REDUCTION
- ASTRONOMY

Metro Manila	
	Moderate to Strong Southwest
24°C to 31°C	Manila Bay: Moderate to Rough
More Weather	

Tropical Cyclone Update
As of today, Tuesday, 10-Aug-2010 07:24:41 PHT no tropical cyclone existing within the Philippine Area of Responsibility (PAR).

Gale Warning
Issued at: 5:00 a.m., Today, 10 August 2010
Strong to gale force wind is expected to affect the seaboard of Luzon.
[More...](#)

- Flood Forecasts**
- [Hydrological Forecasts](#)
 - [Basin Flood Bulletins / Advisories](#)
 - [Dam Status](#)

SMART subscribers can now receive announcements and advisories thru SMS
[More details](#)

Press Release

[Astronomical Diary August 2010](#)

August is one of the most popular month of the year to observe meteor showers. Occasionally, an exceptional shower may show tens or even hundreds of meteors per minute, but around 50 meteors per hour is more typical...

[More](#)

[Special Weather Outlook on the State of the Nation Address \(July 26, 2010\)](#)

The dominant weather system that will affect the country in the next 3-4 days is the Intertropical Convergence Zone (ITCZ) which is expected to oscillate over Luzon, Visayas, and Mindanao.

[More](#)

[Special Weather Outlook for the Presidential Inaugural Ceremony \(June 29-30, 2010\)](#)

The Intertropical Convergence Zone (ITCZ) is the dominant weather system to affect most parts of the country. This weather system will move northward due to the expected approach of a Low Pressure Area (LPA) to the Visayas...

[More](#)

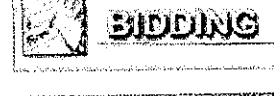
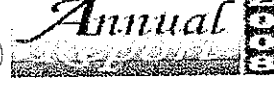
[Special Weather Outlook for the Independence Day Celebration and Balik Eskwela 2010 \(June 12-15, 2010\)](#)

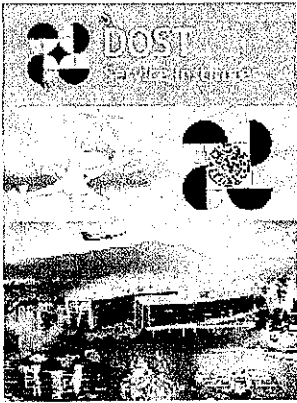
Generally warm and humid weather condition is expected over most parts of Luzon and Visayas with rainshowers and thunderstorms mostly in the afternoon or evening. However, extreme Northern Luzon will be mostly cloudy with occasional rains due to the effect of the monsoon trough over Taiwan.

[More](#)

[Onset of the 2010 Rainy Season 06 June 2010](#)

The development of a series of low pressure systems, also known as heat lows, in the southern part of mainland Asia that linked with the low pressure area near Northern Luzon has generated and sustained the southwesterly



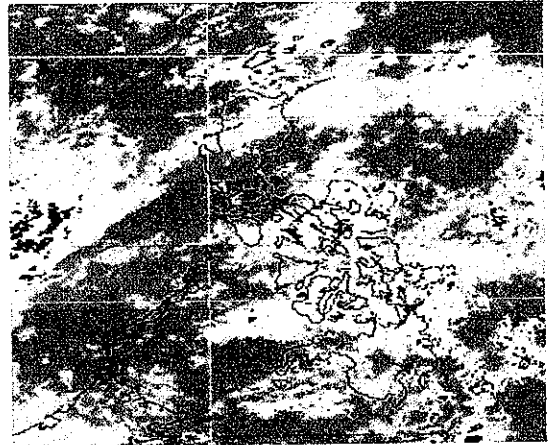


DOST Agencies [] DOST Regional Offices [] [] Search DOST []

[DOST HOME](#) / [DOST-MAIL](#) / [DOSTBOARD](#) / [DOST HELPCENTER](#)
PAGASA Philippine Atmospheric, Geophysical & Astronomical Services Administration

Please refresh the page to ensure up-to-date information

PAGASA-DOST MTSAT-EIR Satellite Image for 6 a.m., 11 Aug 2010



For the latest in weather news, call our new 24-hour hotline at 433-ULAN (433-8526)

- HOME
- ABOUT US
- REAL-TIME WEATHER
- FLOOD FORECAST
- CLIMATOLOGY
- DISASTER REDUCTION
- ASTRONOMY

Weather
Issued at: 5:00 a.m., 11 August 2010
(click here to download 5 a.m. forecast-Adobe PDF format)
Synopsis : Intertropical Convergence Zone (ITCZ) affecting Visayas and Mindanao.

Metro Manila

	Light to Moderate Southeast-South Manila Bay: Slight to Moderate
--	---

25°C to 33°C

[More Weather](#)

Wednesday, August 11, 2010
Philippine Standard Time

Tropical Cyclone Update
As of today, Wednesday, 11-Aug-2010 07:23:33 PHT no tropical cyclone existing within the Philippine Area of Responsibility (PAR).

SMART subscribers can now receive announcements and advisories thru SMS
[More details](#)

- Flood Forecasts**
- [Hydrological Forecasts](#)
 - [Basin Flood Bulletins / Advisories](#)
 - [Dam Status](#)

[Press Release](#)

[Astronomical Diary August 2010](#)

August is one of the most popular month of the year to observe meteor showers. Occasionally, an exceptional shower may show tens or even hundreds of meteors per minute, but around 50 meteors per hour is more typical...

[More](#)

[Special Weather Outlook on the State of the Nation Address \(July 26, 2010\)](#)

The dominant weather system that will affect the country in the next 3-4 days is the Intertropical Convergence Zone (ITCZ) which is expected to oscillate over Luzon, Visayas, and Mindanao.

[More](#)

[Special Weather Outlook for the Presidential Inaugural Ceremony \(June 29-30, 2010\)](#)

The Intertropical Convergence Zone (ITCZ) is the dominant weather system to affect most parts of the country. This weather system will move northward due to the expected approach of a Low Pressure Area (LPA) to the Visayas...

[More](#)

[Special Weather Outlook for the Independence Day Celebration and Balik Eskwela 2010 \(June 12-15, 2010\)](#)

Generally warm and humid weather condition is expected over most parts of Luzon and Visayas with rainshowers and thunderstorms mostly in the afternoon or evening. However, extreme Northern Luzon will be mostly cloudy with occasional rains due to the effect of the monsoon trough over Taiwan.

[More](#)

[Onset of the 2010 Rainy Season 06 June 2010](#)

The development of a series of low pressure systems, also known as heat lows, in the southern part of mainland Asia that linked with the low pressure area near Northern Luzon has generated and sustained the southwesterly



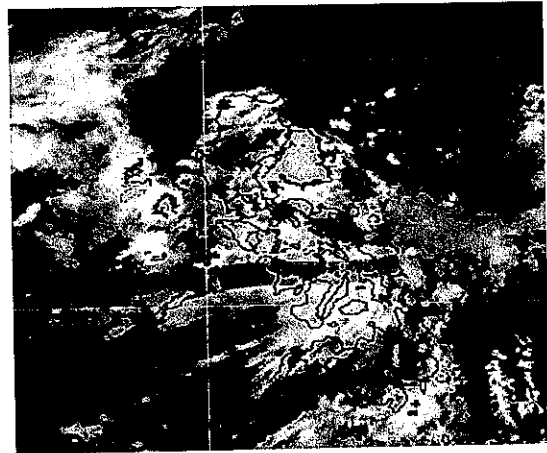
DOST Agencies DOST Regional Offices Search DOST

[DOST HOME](#) / [DOST-MAIL](#) / [DOSTBOARD](#) / [DOST HELPCENTER](#)

PAGASA Philippine Atmospheric, Geophysical & Astronomical Services Administration

Please refresh the page to ensure up-to-date information

PAGASA-DOST MTSAT-EIR Satellite Image for 6 a.m., 12/Aug/2010



For the latest in weather news, call our new 24-hour hotline at 433-ULAN (433-8526)

SMART subscribers can now receive announcements and advisories thru SMS
[More details](#)

[Press Release](#)

- [HOME](#)
- [ABOUT US](#)
- [REAL-TIME WEATHER](#)
- [FLOOD FORECAST](#)
- [CLIMATOLOGY](#)
- [DISASTER REDUCTION](#)

Weather
Issued at: 5:00 a.m., 12 August 2010
([click here to download 5 a.m. forecast-Adobe PDF format](#))
Synopsis : Intertropical Convergence Zone (ITCZ) affecting Visayas and Mindanao.

Metro Manila

 24°C to 31°C	Light to Moderate Southeast-South Manila Bay: Slight to Moderate
------------------	---

[More Weather](#)

ASTRONOMY

Thursday, August 12, 2010
Philippine Standard Time

Tropical Cyclone Update
As of today, Thursday, 12-Aug-2010 07:23:59 PHT no tropical cyclone existing within the Philippine Area of Responsibility (PAR).



- Flood Forecasts**
- Hydrological Forecasts
 - Basin Flood Bulletins / Advisories
 - Dam Status

[Astronomical Diary August 2010](#)

August is one of the most popular month of the year to observe meteor showers. Occasionally, an exceptional shower may show tens or even hundreds of meteors per minute, but around 50 meteors per hour is more typical...

[More](#)

[Special Weather Outlook on the State of the Nation Address \(July 26, 2010\)](#)

The dominant weather system that will affect the country in the next 3-4 days is the Intertropical Convergence Zone (ITCZ) which is expected to oscillate over Luzon, Visayas, and Mindanao.

[More](#)

[Special Weather Outlook for the Presidential Inaugural Ceremony \(June 29-30, 2010\)](#)

The Intertropical Convergence Zone (ITCZ) is the dominant weather system to affect most parts of the country. This weather system will move northward due to the expected approach of a Low Pressure Area (LPA) to the Visayas...

[More](#)

[Special Weather Outlook for the Independence Day Celebration and Balik Eskwela 2010 \(June 12-15, 2010\)](#)

Generally warm and humid weather condition is expected over most parts of Luzon and Visayas with rainshowers and thunderstorms mostly in the afternoon or evening. However, extreme Northern Luzon will be mostly cloudy with occasional rains due to the effect of the monsoon trough over Taiwan.

[More](#)

[Onset of the 2010 Rainy Season 06 June 2010](#)

The development of a series of low pressure systems, also known as heat lows, in the southern part of mainland



DOST Agencies

DOST Regional Offices

Search DOST

DOST HOME

DOST-MAIL

DOSTBOARD

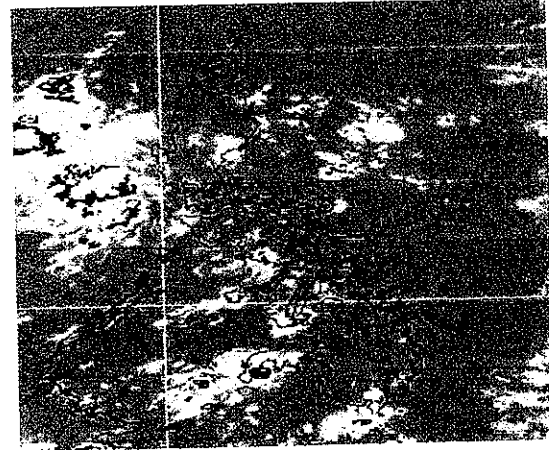
DOST HELPCENTER

PAGASA

Philippine Atmospheric, Geophysical & Astronomical Services Administration

Please refresh the page to ensure up-to-date information

PAGASA-DOST MTSAT-EIR Satellite Image for 7 a.m., 13 August 2010



For the latest in weather news, call our new 24-hour hotline at 433-ULAN (433-8526)

Weather

Issued at: 5:00 a.m., 13 August 2010

(click here to download 5 a.m. forecast-Adobe PDF format)

Synopsis : Intertropical Convergence Zone (ITCZ) affecting Luzon and Visayas.

Metro Manila



24°C to 31°C

Light to Moderate
Southeast-South
Manila Bay: Slight to Moderate

[More Weather](#)

Tropical Cyclone Update

As of today, Friday, 13-Aug-2010 08:01:02 PHT no tropical cyclone existing within the Philippine Area of Responsibility (PAR).

Flood Forecasts

- Hydrological Forecasts
- Basin Flood Bulletins / Advisories
- Dam Status

SMART subscribers can now receive announcements and advisories thru SMS
[More details](#)

Press Release

Astronomical Diary August 2010

August is one of the most popular month of the year to observe meteor showers. Occasionally, an exceptional shower may show tens or even hundreds of meteors per minute, but around 50 meteors per hour is more typical...

[More](#)

Special Weather Outlook on the State of the Nation Address (July 26, 2010)

The dominant weather system that will affect the country in the next 3-4 days is the Intertropical Convergence Zone (ITCZ) which is expected to oscillate over Luzon, Visayas, and Mindanao.

[More](#)

Special Weather Outlook for the Presidential Inaugural Ceremony (June 29-30, 2010)

The Intertropical Convergence Zone (ITCZ) is the dominant weather system to affect most parts of the country. This weather system will move northward due to the expected approach of a Low Pressure Area (LPA) to the Visayas...

[More](#)

Special Weather Outlook for the Independence Day Celebration and Balik Eskwela 2010 (June 12-15, 2010)

Generally warm and humid weather condition is expected over most parts of Luzon and Visayas with rainshowers and thunderstorms mostly in the afternoon or evening. However, extreme Northern Luzon will be mostly cloudy with occasional rains due to the effect of the monsoon trough over Taiwan.

[More](#)

Onset of the 2010 Rainy Season 06 June 2010

The development of a series of low pressure systems, also known as heat lows, in the southern part of mainland Asia that linked with the low pressure area near Northern Luzon has generated and sustained the southwesterly

HOME

ABOUT US

REAL-TIME WEATHER

FLOOD FORECAST

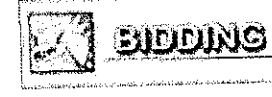
CLIMATOLOGY

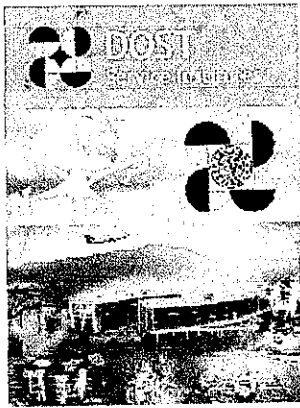
DISASTER REDUCTION

ASTRONOMY

Friday, August 13, 2010

Philippine Standard Time





DOST Agencies DOST Regional Offices Search DOST

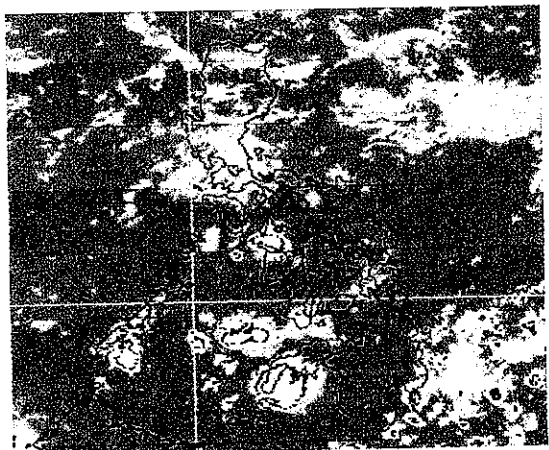
[DOST HOME](#) [DOST-MAIL](#) [DOSTBOARD](#) [DOST HELPCENTER](#)

PAGASA

Philippine Atmospheric, Geophysical & Astronomical Services Administration

Please refresh the page to ensure up-to-date information

PAGASA-DOST MTSAT-EIR Satellite Image for 7 a.m., 14 Aug 2010



For the latest in weather news, call our new 24-hour hotline at 433-ULAN (433-8526)

SMART subscribers can now receive announcements and advisories thru SMS [More details](#)

Press Release

Weather
 Issued at: 5:00 a.m., 14 August 2010
 (click here to download 5 a.m. forecast-Adobe PDF format)
Synopsis : Intertropical Convergence Zone (ITCZ) affecting Mindanao.

Metro Manila

	Light to Moderate East-Southeast Manila Bay: Slight to Moderate
23°C to 33°C	

[More Weather](#)

Tropical Cyclone Update
 As of today, Saturday, 14-Aug-2010 07:58:40
 PHT no tropical cyclone existing within the Philippine Area of Responsibility (PAR).

- Flood Forecasts**
- [Hydrological Forecasts](#)
 - [Basin Flood Bulletins / Advisories](#)
 - [Dam Status](#)

[Astronomical Diary August 2010](#)

August is one of the most popular month of the year to observe meteor showers. Occasionally, an exceptional shower may show tens or even hundreds of meteors per minute, but around 50 meteors per hour is more typical...

[More](#)

[Special Weather Outlook on the State of the Nation Address \(July 26, 2010\)](#)

The dominant weather system that will affect the country in the next 3-4 days is the Intertropical Convergence Zone (ITCZ) which is expected to oscillate over Luzon, Visayas, and Mindanao.

[More](#)

[Special Weather Outlook for the Presidential Inaugural Ceremony \(June 29-30, 2010\)](#)

The Intertropical Convergence Zone (ITCZ) is the dominant weather system to affect most parts of the country. This weather system will move northward due to the expected approach of a Low Pressure Area (LPA) to the Visayas...

[More](#)

[Special Weather Outlook for the Independence Day Celebration and Balik Eskwela 2010 \(June 12-15, 2010\)](#)

Generally warm and humid weather condition is expected over most parts of Luzon and Visayas with rainshowers and thunderstorms mostly in the afternoon or evening. However, extreme Northern Luzon will be mostly cloudy with occasional rains due to the effect of the monsoon trough over Taiwan.

[More](#)

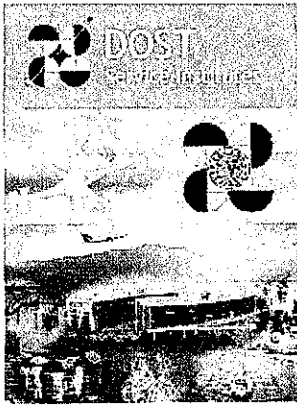
[Onset of the 2010 Rainy Season 06 June 2010](#)

The development of a series of low pressure systems, also known as heat lows, in the southern part of mainland Asia that linked with the low pressure area near Northern Luzon has generated and sustained the southwesterly

- HOME
- ABOUT US
- REAL-TIME WEATHER
- FLOOD FORECAST
- CLIMATOLOGY
- DISASTER REDUCTION
- ASTRONOMY

Saturday, August 14, 2010
 Philippine Standard Time





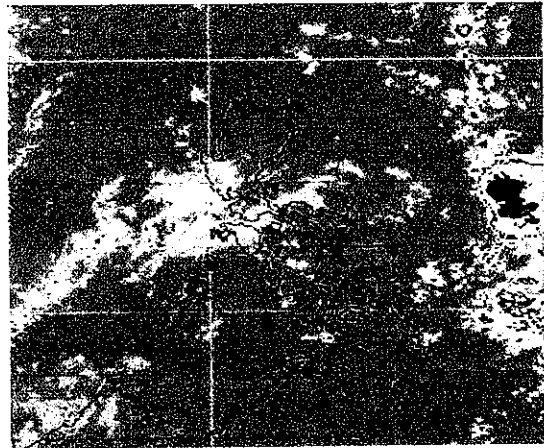
DOST Agencies DOST Regional Offices Search DOST

[DOST HOME](#) / [DOST-MAIL](#) / [DOSTBOARD](#) / [DOST HELPCENTER](#)

PAGASA Philippine Atmospheric, Geophysical & Astronomical Services Administration

Please refresh the page to ensure up-to-date information

PAGASA-DOST MTSAT-EIR Satellite Image for 6 a.m., 16 Aug 2010



For the latest in weather news, call our new 24-hour hotline at 433-ULAN (433-8526)

SMART subscribers can now receive announcements and advisories thru SMS
[More details](#)

Press Release

Weather
Issued at: 5:00 a.m., 16 August 2010
(click here to download 5 a.m. forecast-Adobe PDF format)
Synopsis : Intertropical Convergence Zone (ITCZ) affecting Central and Southern Luzon, Visayas and Mindanao.

Metro Manila

 24°C to 32°C	Light to Moderate Southeast-Northeast
	Manila Bay: Slight to Moderate

[More Weather](#)

Tropical Cyclone Update
 As of today, Monday, 16-Aug-2010 07:27:30
 PHT no tropical cyclone existing within the Philippine Area of Responsibility (PAR).

- Flood Forecasts**
- [Hydrological Forecasts](#)
 - [Basin Flood Bulletins / Advisories](#)
 - [Dam Status](#)

Astronomical Diary
August 2010

August is one of the most popular month of the year to observe meteor showers. Occasionally, an exceptional shower may show tens or even hundreds of meteors per minute, but around 50 meteors per hour is more typical...

[More](#)

Special Weather Outlook on the State of the Nation Address
(July 26, 2010)

The dominant weather system that will affect the country in the next 3-4 days is the Intertropical Convergence Zone (ITCZ) which is expected to oscillate over Luzon, Visayas, and Mindanao.

[More](#)

Special Weather Outlook for the Presidential Inaugural Ceremony
(June 29-30, 2010)

The Intertropical Convergence Zone (ITCZ) is the dominant weather system to affect most parts of the country. This weather system will move northward due to the expected approach of a Low Pressure Area (LPA) to the Visayas...

[More](#)

Special Weather Outlook for the Independence Day Celebration and Balik Eskwela 2010
(June 12-15, 2010)

Generally warm and humid weather condition is expected over most parts of Luzon and Visayas with rainshowers and thunderstorms mostly in the afternoon or evening. However, extreme Northern Luzon will be mostly cloudy with occasional rains due to the effect of the monsoon trough over Taiwan.

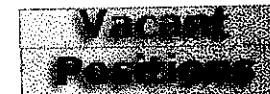
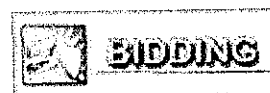
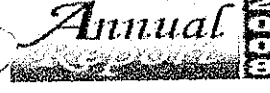
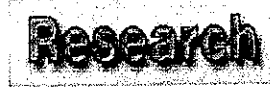
[More](#)

Onset of the 2010 Rainy Season
06 June 2010

The development of a series of low pressure systems, also known as heat lows, in the southern part of mainland Asia that linked with the low pressure area near Northern Luzon has generated and sustained the southwesterly

- HOME
- ABOUT US
- REAL-TIME WEATHER
- FLOOD FORECAST
- CLIMATOLOGY
- DISASTER REDUCTION
- ASTRONOMY

Monday, August 16, 2010
 Philippine Standard Time





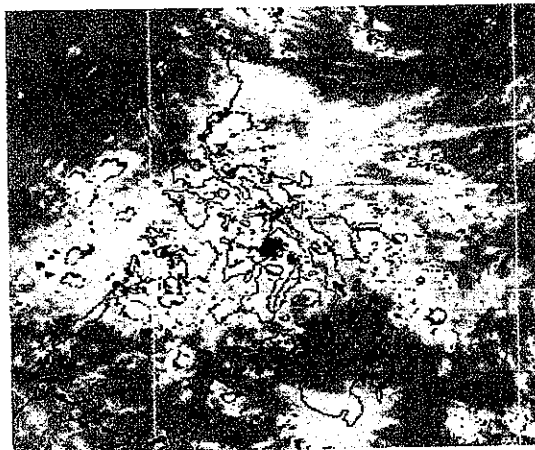
DOST Agencies DOST Regional Offices Search DOST

[DOST HOME](#) / [DOST-MAIL](#) / [DOSTBOARD](#) / [DOST HELPCENTER](#)

PAGASA Philippine Atmospheric, Geophysical & Astronomical Services Administration

Please refresh the page to ensure up-to-date information

PAGASA-DOST MTSAT-EIR Satellite Image for 6 a.m., 17 Aug 2010



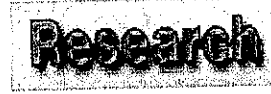
For the latest in weather news, call our new 24-hour hotline at 433-ULAN (433-8526)

SMART subscribers can now receive announcements and advisories thru SMS
[More details](#)

Press Release

- HOME
- ABOUT US
- REAL-TIME WEATHER
- FLOOD FORECAST
- CLIMATOLOGY
- DISASTER REDUCTION
- ASTRONOMY

Tuesday, August 17, 2010
Philippine Standard Time



Weather

Issued at: 5:00 a.m., 17 August 2010
([click here to download 5 a.m. forecast-Adobe PDF format](#))

Synopsis : At 2 a.m. today, the Shallow Low Pressure Area (SLPA) was estimated based on satellite and surface data at 190 km East of Catarman, Northern Samar (12.5°N 126.5°E) embedded along the Intertropical Convergence Zone (ITCZ) affecting the whole country.

Metro Manila

 24°C to 33°C	Light to Moderate Southeast-Northeast
	Manila Bay: Slight to Moderate

[More Weather](#)

Tropical Cyclone Update

As of today, Tuesday, 17-Aug-2010 07:25:07 PHT no tropical cyclone existing within the Philippine Area of Responsibility (PAR).

Weather Advisory

Issued at: 12:00 NN, 16 August 2010
The Shallow Low Pressure Area (SLPA) was estimated at 270 km Northeast of Northern Samar (13.0°N 128.0°E).
[More Advisory](#)

Flood Forecasts

- [Hydrological Forecasts](#)
- [Basin Flood Bulletins / Advisories](#)
- [Dam Status](#)

Astronomical Diary August 2010

August is one of the most popular month of the year to observe meteor showers. Occasionally, an exceptional shower may show tens or even hundreds of meteors per minute, but around 50 meteors per hour is more typical...

[More](#)

Special Weather Outlook on the State of the Nation Address (July 26, 2010)

The dominant weather system that will affect the country in the next 3-4 days is the Intertropical Convergence Zone (ITCZ) which is expected to oscillate over Luzon, Visayas, and Mindanao.

[More](#)

Special Weather Outlook for the Presidential Inaugural Ceremony (June 29-30, 2010)

The Intertropical Convergence Zone (ITCZ) is the dominant weather system to affect most parts of the country. This weather system will move northward due to the expected approach of a Low Pressure Area (LPA) to the Visayas...

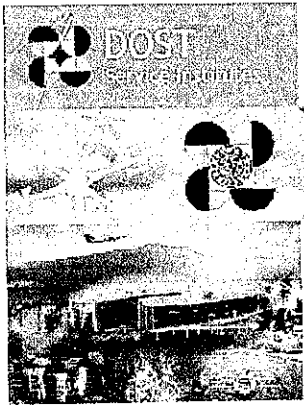
[More](#)

Special Weather Outlook for the Independence Day Celebration and Balik Eskwela 2010 (June 12-15, 2010)

Generally warm and humid weather condition is expected over most parts of Luzon and Visayas with rainshowers and thunderstorms mostly in the afternoon or evening. However, extreme Northern Luzon will be mostly cloudy with occasional rains due to the effect of the monsoon trough over Taiwan.

[More](#)

Onset of the 2010 Rainy Season 06 June 2010



DOST Agencies [] DOST Regional Offices [] Search DOST []

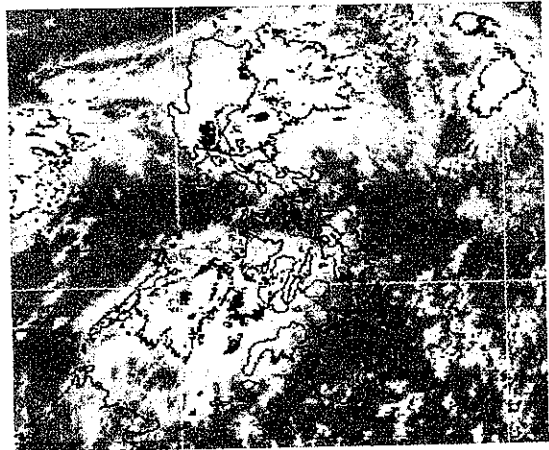
DOST HOME / DOST-MAIL / DOSTBOARD / DOST HELPCENTER

PAGASA

Philippine Atmospheric, Geophysical & Astronomical Services Administration

Please refresh the page to ensure up-to-date information

PAGASA-DOST MTSAT-EIR Satellite Image for 6 a.m, 19 Aug 2010



For the latest in weather news, call our new 24-hour hotline at 433-ULAN (433-8526)

SMART subscribers can now receive announcements and advisories thru SMS [More details](#)

Press Release

Weather
Issued at: 5:00 a.m., 19 August 2010
[\(click here to download 5 a.m. forecast-Adobe PDF format\)](#)
Synopsis : Intertropical Convergence Zone (ITCZ) affecting the country.

Metro Manila

	Light to Moderate East-Southeast Manila Bay: Slight to Moderate
24°C to 32°C	

[More Weather](#)

Tropical Cyclone Update
As of today, Thursday, 19-Aug-2010 07:19:35 PHT no tropical cyclone existing within the Philippine Area of Responsibility (PAR).

Weather Advisory
Issued at: 10:45 a.m., 18 August 2010
The Low Pressure Area (LPA) was estimated based on satellite and surface data at 290 km Northwest of Puerto Princesa City (11.5°N 116.5°E)..
[More Advisory](#)

Flood Forecasts

- [Hydrological Forecasts](#)
- [Basin Flood Bulletins / Advisories](#)
- [Dam Status](#)

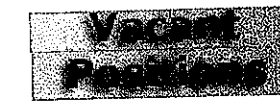
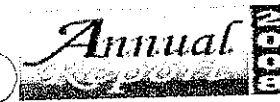
Astronomical Diary August 2010

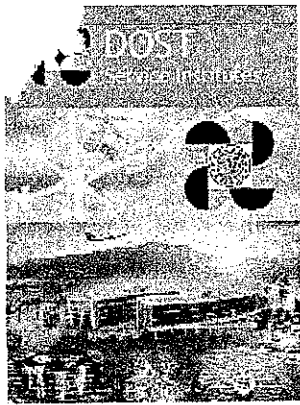
August is one of the most popular month of the year to observe meteor showers. Occasionally, an exceptional shower may show tens or even hundreds of meteors per minute, but around 50 meteors per hour is more typical...

[More](#)

- HOME
- ABOUT US
- REAL-TIME WEATHER
- FLOOD FORECAST
- CLIMATOLOGY
- DISASTER REDUCTION
- ASTRONOMY

Thursday, August 19, 2010
[Philippine Standard Time](#)





DOST Agencies

DOST Regional Offices

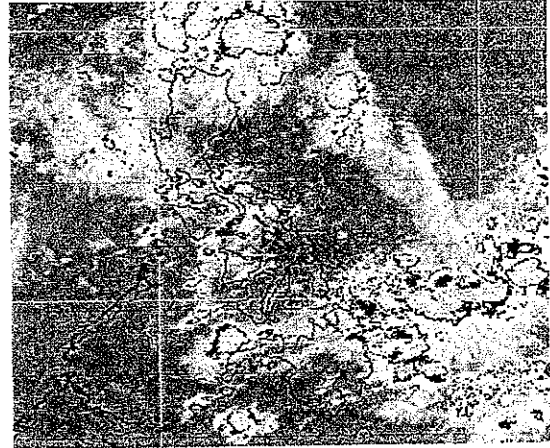
Search DOST

[DOST HOME](#) / [DOST-MAIL](#) / [DOSTBOARD](#) / [DOST HELPCENTER](#)

PAGASA Philippine Atmospheric, Geophysical & Astronomical Services Administration

Please refresh the page to ensure up-to-date information

PAGASA-DOST MTSAT-EIR Satellite Image for 6 a.m, 20 Aug 2010



For the latest in weather news, call our new 24-hour hotline at 433-ULAN (433-8526)

SMART subscribers can now receive announcements and advisories thru SMS [More details](#)

Press Release

- HOME
- ABOUT US
- REAL-TIME WEATHER
- FLOOD FORECAST
- CLIMATOLOGY
- DISASTER REDUCTION
- ASTRONOMY

Friday, August 20, 2010
Philippine Standard Time



Weather

Issued at: 5:00 a.m., 20 August 2010
[\(click here to download 5 a.m. forecast-Adobe PDF format\)](#)

Synopsis : At 2:00 a.m. today, the Low Pressure Area (LPA) was estimated based on satellite and surface data at 230 km East of Northern Luzon (19.0°N, 124.0°E). It is embedded along the Intertropical Convergence Zone (ITCZ) affecting the whole country.

Metro Manila

 25°C to 31°C	Light to Moderate Northeast Manila Bay: Slight to Moderate
------------------	---

[More Weather](#)

Tropical Cyclone Update

As of today, Friday, 20-Aug-2010 07:24:35 PHT no tropical cyclone existing within the Philippine Area of Responsibility (PAR).

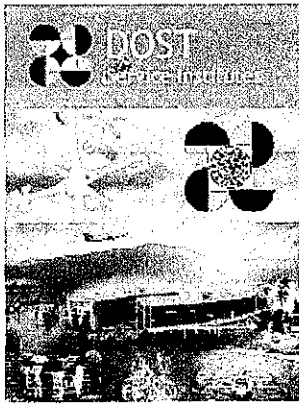
Flood Forecasts

- [Hydrological Forecasts](#)
- [Basin Flood Bulletins / Advisories](#)
- [Dam Status](#)

Astronomical Diary August 2010

August is one of the most popular month of the year to observe meteor showers. Occasionally, an exceptional shower may show tens or even hundreds of meteors per minute, but around 50 meteors per hour is more typical...

[More](#)



DOST Agencies [] DOST Regional Offices [] [] Search DOST

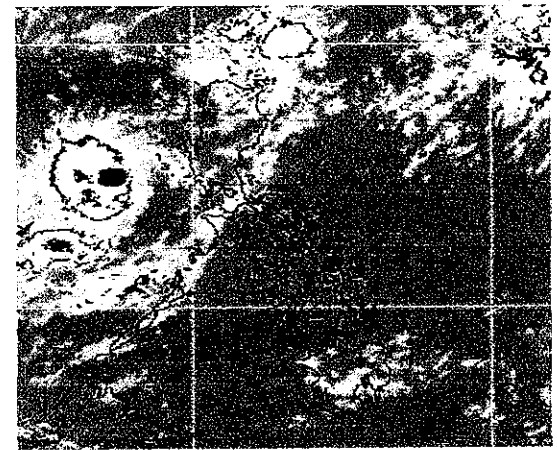
[DOST HOME](#) / [DOST-MAIL](#) / [DOSTBOARD](#) / [DOST HELPCENTER](#)

PAGASA

Philippine Atmospheric, Geophysical & Astronomical Services Administration

Please refresh the page to ensure up-to-date information

PAGASA-DOST MTSAT-EIR Satellite Image for 7 a.m., 27 Aug 2010



For the latest in weather news, call our new 24-hour hotline at 433-ULAN (433-8526)

SMART subscribers can now receive announcements and advisories thru SMS [More details](#)

Press Release

Weather
Issued at: 5:00 a.m., 27 August 2010
[\(click here to download 5 a.m. forecast-Adobe PDF format\)](#)
Synopsis : At 2:00 a.m. today, an Active Low Pressure Area (ALPA) was estimated based on satellite and surface data at 870 km Northeast of Northern Luzon (23.0°N, 131.0°E) embedded along the Intertropical Convergence Zone (ITCZ) affecting the country.

Metro Manila

	Moderate Southwest Manila Bay: Moderate
24°C to 32°C	

[More Weather](#)

Tropical Cyclone Update
As of today, Friday, 27-Aug-2010 07:30:32 PHT no tropical cyclone existing within the Philippine Area of Responsibility (PAR).

Weather Advisory
Issued at: 11:00 a.m., 26 August 2010
The Low Pressure Area (LPA) was estimated at 140 km Southeast of Tuguegarao City (17.0°N 123.0°E)..
[More Advisory](#)

- Flood Forecasts**
- [Hydrological Forecasts](#)
 - [Basin Flood Bulletins / Advisories](#)
 - [Dam Status](#)

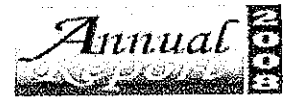
[Astronomical Diary](#) August 2010

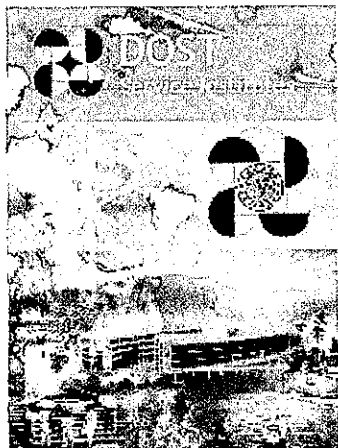
August is one of the most popular month of the year to observe meteor showers. Occasionally, an exceptional shower may show tens or even hundreds of meteors per minute, but around 50 meteors per hour is more typical...

[More](#)

- HOME
- ABOUT US
- REAL-TIME WEATHER
- FLOOD FORECAST
- CLIMATOLOGY
- DISASTER REDUCTION
- ASTRONOMY

Friday, August 27, 2010
Philippine Standard Time





[DOST Agencies](#)

[DOST Regional Offices](#)

[Search DOST](#)

[DOST HOME](#)

[DOST-MAIL](#)

[DOSTBOARD](#)

[DOST HELPCENTER](#)

PAGASA

Philippine Atmospheric, Geophysical & Astronomical Services Admin

Weather

Issued at: 5:00 a.m., 28 August 2010

[\(click here to download 5 a.m. forecast-Adobe PDF format\)](#)

Synopsis : At 4:00 AM today, Tropical Depression "FLORITA" was estimated based on satellite and surface data at 430 km West of Baguio City(16.2°N 116.2°E) with maximum winds of 55 kph near the center. It is forecast to move Northwest at 11 kph.

Metro Manila

	Moderate to Strong Southwest Manila Bay: Moderate to Rough
24°C to 31°C	

[More Weather](#)

Tropical Cyclone Update

Issued at: 10:30 p.m, 27 August 2010

Tropical Depression "FLORITA" has maintained its strength as it move towards the South China Sea.

[More Update](#)

Gale Warning

Issued at: 5:00 a.m., Today, 28 August 2010
Strong to gale force wind is expected to affect the Western seaboard of Luzon and Visayas.

[More...](#)

Tropical Cyclone Warning for Shipping

Issued at: 2:00 a.m., 28 August 2010

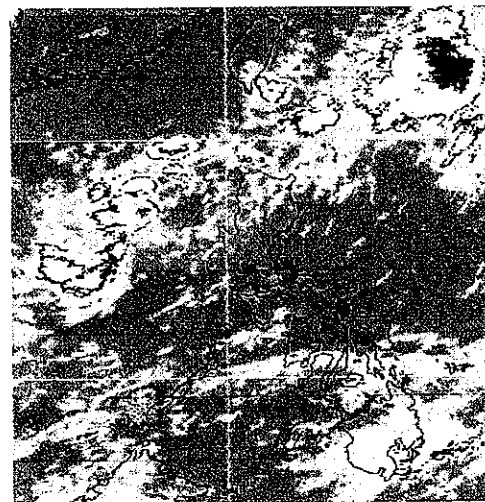
[More Update](#)

Flood Forecasts

- [Hydrological Forecasts](#)
- [Basin Flood Bulletins / Advisories](#)
- [Dam Status](#)

Please refresh the page to ensure up-to-date information

PAGASA-DOST MTSAT-EIR Satellite I 7 a.m., 28 Aug 2010



For the latest in weather news
call our **new 24-hour hotline** at
433-ULAN (433-8526)

**SMART subscribers can now receive ann
and advisories thru SMS**
[More details](#)

[Press Release](#)

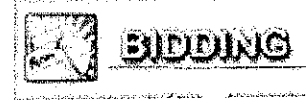
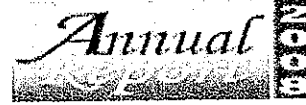
Astronomical Diary August 2010

August is one of the most popular month of the year to observe meteor showers. Occasionally, shower may show tens or even hundreds of meteors per minute, but around 50 meteors per typical...

[More](#)

- [HOME](#)
- [ABOUT US](#)
- [REAL-TIME WEATHER](#)
- [FLOOD FORECAST](#)
- [CLIMATOLOGY](#)
- [DISASTER REDUCTION](#)
- [ASTRONOMY](#)

Saturday, August 28, 2010
[Philippine Standard Time](#)

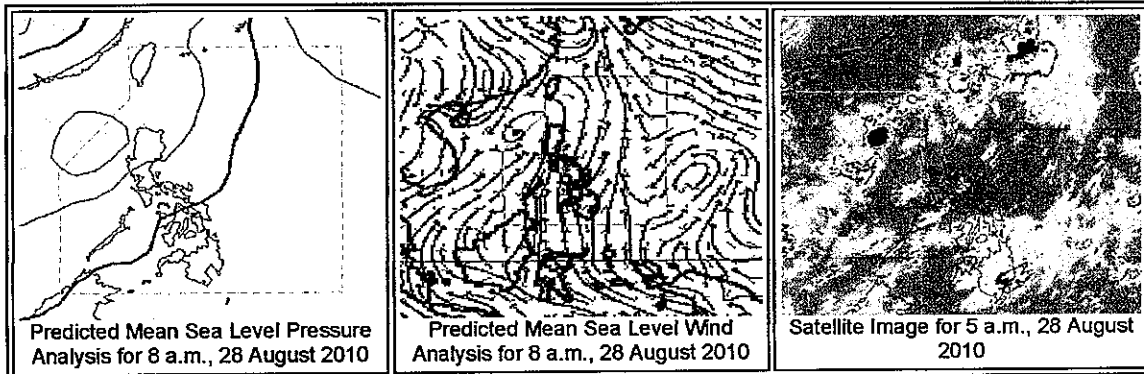


24-HOUR PUBLIC WEATHER FORECAST

Note: Please refresh the page to ensure that the information is up-to-date.

Issued At: 5:00 a.m., 28 August 2010

Valid Beginning: 5:00 a.m. today until 5:00 a.m. tomorrow



Synopsis:

At 4:00 AM today, Tropical Depression "FLORITA" was estimated based on satellite and surface data at 430 km West of Baguio City(16.2°N 116.2°E) with maximum winds of 55 kph near the center. It is forecast to move Northwest at 11 kph.

Forecast:

The Western section of Luzon, the whole of Visayas and Mindanao will experience cloudy skies with scattered rainshowers and thunderstorms becoming widespread rains over Eastern Mindanao which may trigger flashfloods and landslides. The rest of the country will be partly cloudy to cloudy with isolated rainshowers or thunderstorms.

Moderate to strong winds blowing from the Southwest will prevail over Luzon and Western Visayas and the coastal waters along these areas will be moderate to rough. Elsewhere, winds will be light to moderate from the South to Southwest with slight to moderate seas.

(in Filipino)



[DOST Agencies](#)

[DOST Regional Offices](#)

[Search DOST](#)

[DOST HOME](#)

[DOST-MAIL](#)

[DOSTBOARD](#)

[DOST HELPCENTER](#)

PAGASA

Philippine Atmospheric, Geophysical & Astronomical Services Administration

[HOME](#)

[ABOUT US](#)

[REAL-TIME WEATHER](#)

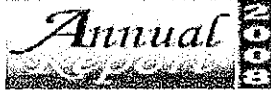
[FLOOD FORECAST](#)

[CLIMATOLOGY](#)

[DISASTER REDUCTION](#)

[ASTRONOMY](#)

Monday, August 30, 2010
Philippine Standard Time




Weather

Issued at: 5:00 a.m., 30 August 2010
[\(click here to download 5 a.m. forecast-Adobe PDF format\)](#)

Synopsis : At 2:00 AM today, Tropical Storm "GLENDA" (KOMPASU) was estimated based on satellite and surface data at 1,090 km East Northeast of Basco, Batanes (22.1°N 133.2°E), with maximum sustained winds of 75 kph near the center and gustiness of up to 90 kph. It is forecast to move West Northwest at 19 kph.

Metro Manila

	Moderate to Strong Southwest Manila Bay: Moderate to Rough
24°C to 32°C	

[More Weather](#)

Tropical Cyclone Update

Issued at: 11:00 p.m., 29 August 2010
Tropical Storm "GLENDA" has maintained its strength as it moves in a west northwest direction.
[More Update](#)

Gale Warning

Issued at: 5:00 a.m., Today, 30 August 2010
Strong to gale force wind is expected to affect the Northern and Western seaboard of Luzon.
[More...](#)

Tropical Cyclone Warning for Shipping

Issued at: 2:00 a.m., 30 August 2010
[More Update](#)

Flood Forecasts

- [Hydrological Forecasts](#)
- [Basin Flood Bulletins / Advisories](#)
- [Dam Status](#)

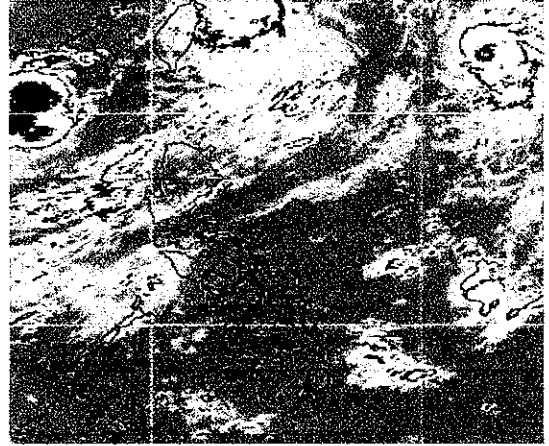
Astronomical Diary August 2010

August is one of the most popular month of the year to observe meteor showers. Occasionally, an exceptional shower may show tens or even hundreds of meteors per minute, but around 50 meteors per hour is more typical...

[More](#)

Please refresh the page to ensure up-to-date information

PAGASA-DOST MTSAT-EIR Satellite Image for 7 a.m., 30 Aug 2010



For the latest in weather news, call our new 24-hour hotline at 433-ULAN (433-8526)

SMART subscribers can now receive announcements and advisories thru SMS
[More details](#)

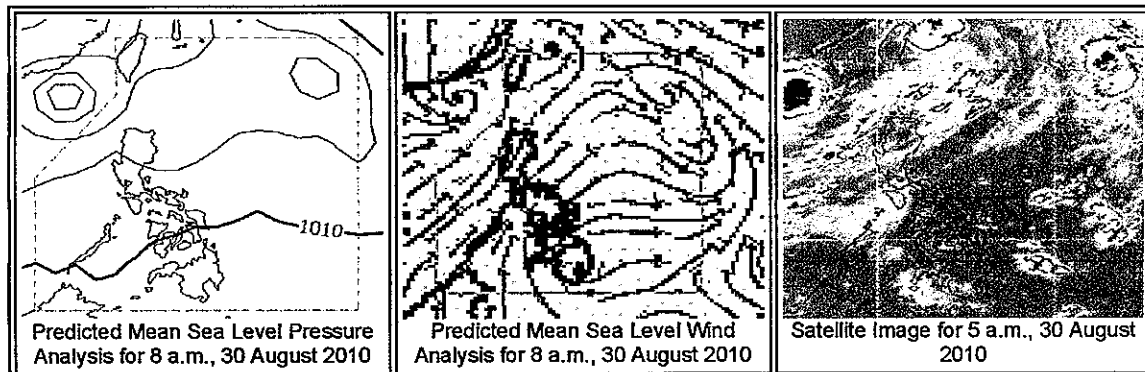
[Press Release](#)

24-HOUR PUBLIC WEATHER FORECAST

Note: Please refresh the page to ensure that the information is up-to-date.

Issued At: 5:00 a.m., 30 August 2010

Valid Beginning: 5:00 a.m. today until 5:00 a.m. tomorrow



Synopsis:

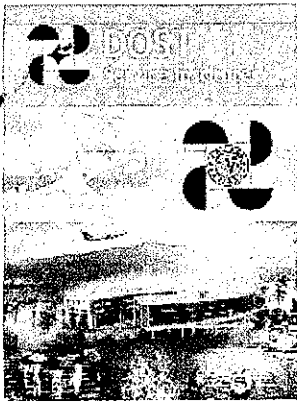
At 2:00 AM today, Tropical Storm "GLENDA" (KOMPASU) was estimated based on satellite and surface data at 1,090 km East Northeast of Basco, Batanes (22.1°N 133.2°E), with maximum sustained winds of 75 kph near the center and gustiness of up to 90 kph. It is forecast to move West Northwest at 19 kph.

Forecast:

Luzon will experience mostly cloudy skies with scattered rain showers and thunderstorms. The rest of the country will be partly cloudy to cloudy with isolated rain showers or thunderstorms.

Moderate to strong winds blowing from the Southwest will prevail over the Western section of Luzon and the coastal waters will be moderate to rough. Elsewhere, winds will be light to moderate coming from the Southwest with slight to moderate seas.

(in Filipino)



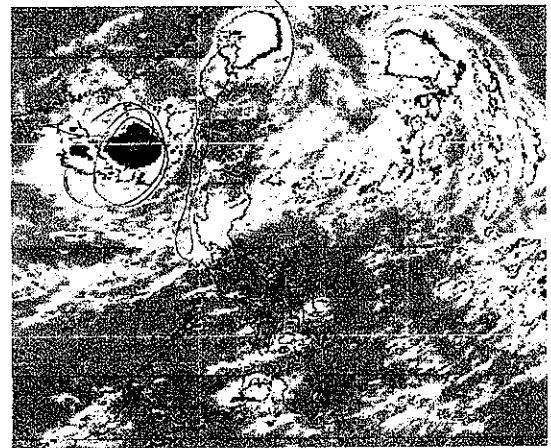
DOST Agencies
 DOST Regional Offices

[DOST HOME](#)
[DOST-MAIL](#)
[DOSTBOARD](#)
[DOST HELPCENTER](#)

PAGASA Philippine Atmospheric, Geophysical & Astronomical Services Administration

Please refresh the page to ensure up-to-date information

PAGASA-DOST MTSAT-EIR Satellite Image for 6 a.m., 31 Aug 2010



For the latest in weather news, call our new 24-hour hotline at 433-ULAN (433-8526)

SMART subscribers can now receive announcements and advisories thru SMS [More details](#)

- HOME
- ABOUT US
- REAL-TIME WEATHER
- FLOOD FORECAST
- CLIMATOLOGY
- DISASTER REDUCTION
- ASTRONOMY

Weather

Issued at: 5:00 a.m., 31 August 2010
 (click here to download 5 a.m. forecast-Adobe PDF format)

Synopsis : "GLENDA" has intensified into a Typhoon. At 2:00 AM Today, The eye of Typhoon "GLENDA" (KOMPASU) was located based on satellite and surface data at 850 km Northeast of Basco, Batanes (24.5°N 130.3°E) with maximum sustained winds of 120 kph near the center and gustiness of up to 150 kph. It is forecast to move Northwest at 19 kph.

Metro Manila

 24°C to 32°C	Moderate to Strong Southwest Manila Bay: Moderate to Rough
------------------	---

[More Weather](#)

Tropical Cyclone Update

Issued at: 11:00 p.m., 30 August 2010
 Tropical Storm "GLENDA" has intensified as it moves toward the Southern Islands of Japan.
[More Update](#)

Gale Warning

Issued at: 5:00 a.m., Today, 31 August 2010
 Strong to gale force wind is expected to affect the seaboard of Luzon and Visayas.
[More...](#)

Tropical Cyclone Warning for Shipping

Issued at: 2:00 a.m., 31 August 2010
[More Update](#)

Flood Forecasts

- [Hydrological Forecasts](#)
- [Basin Flood Bulletins / Advisories](#)
- [Dam Status](#)

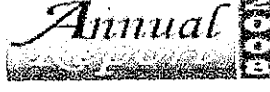
Press Release

Astronomical Diary August 2010

August is one of the most popular month of the year to observe meteor showers. Occasionally, an exceptional shower may show tens or even hundreds of meteors per minute, but around 50 meteors per hour is more typical...

[More](#)

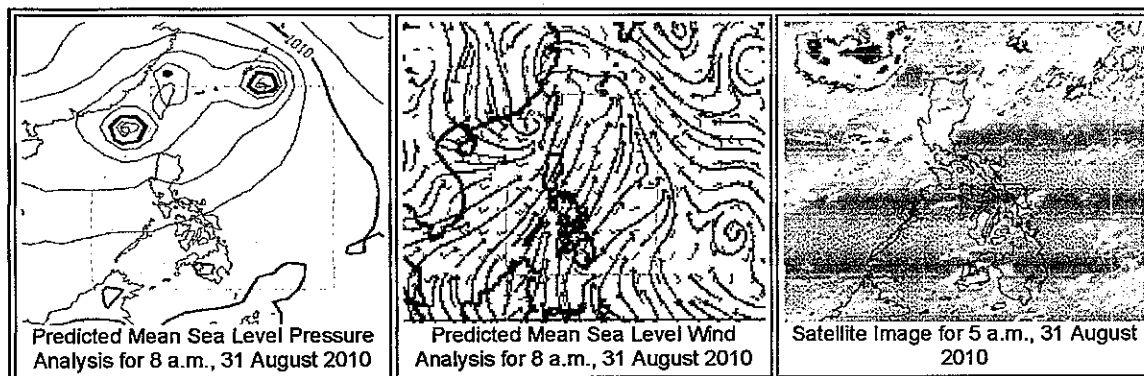
Tuesday, August 31, 2010
 Philippine Standard Time



24-HOUR PUBLIC WEATHER FORECAST

Note: Please refresh the page to ensure that the information is up-to-date.

Issued At: 5:00 a.m., 31 August 2010
Valid Beginning: 5:00 a.m. today until 5:00 a.m. tomorrow

**Synopsis:**

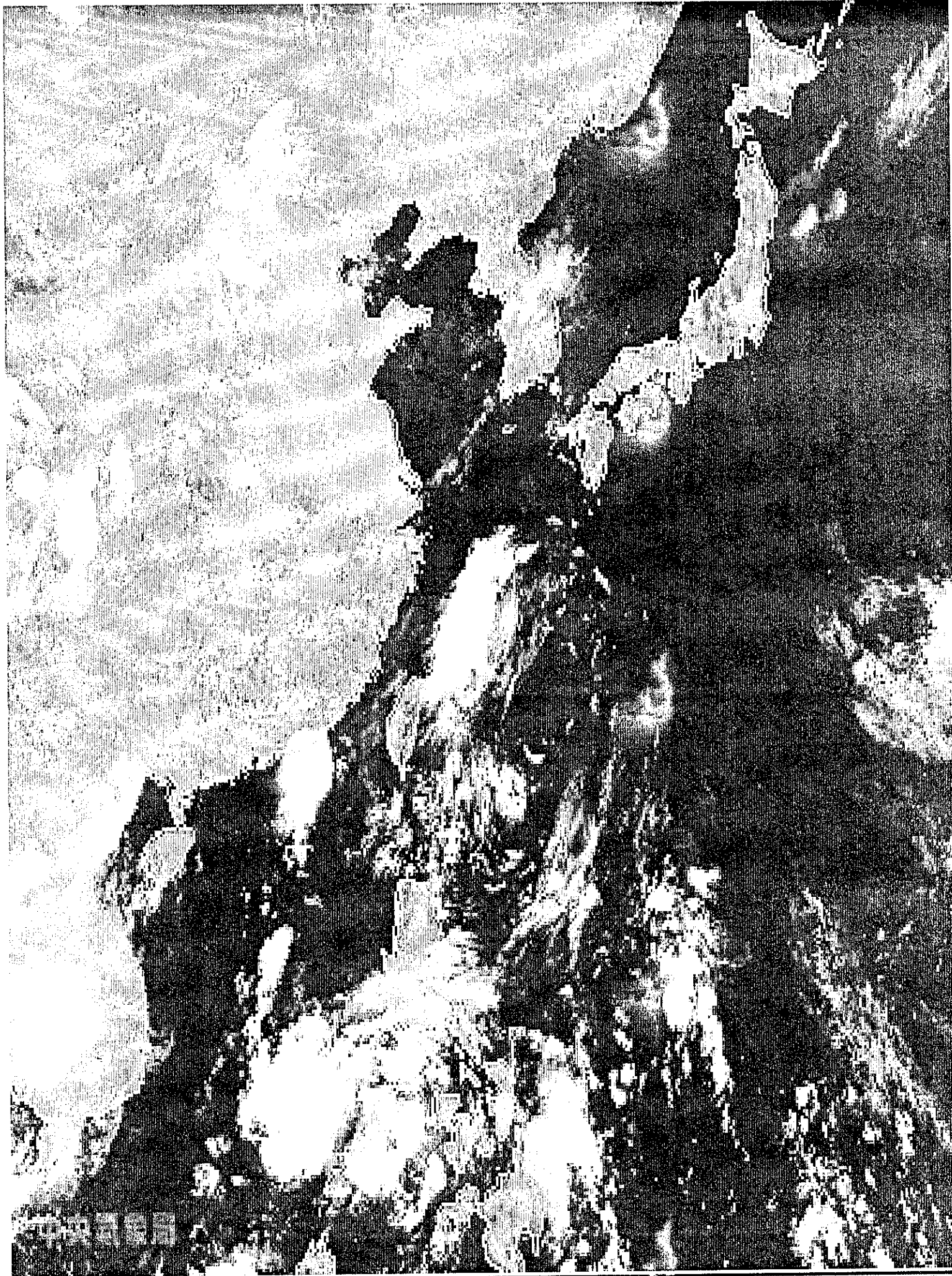
"GLENDA" has intensified into a Typhoon. At 2:00 AM Today, The eye of Typhoon "GLENDA" (KOMPASU) was located based on satellite and surface data at 850 km Northeast of Basco, Batanes (24.5°N 130.3°E) with maximum sustained winds of 120 kph near the center and gustiness of up to 150 kph. It is forecast to move Northwest at 19 kph.

Forecast:

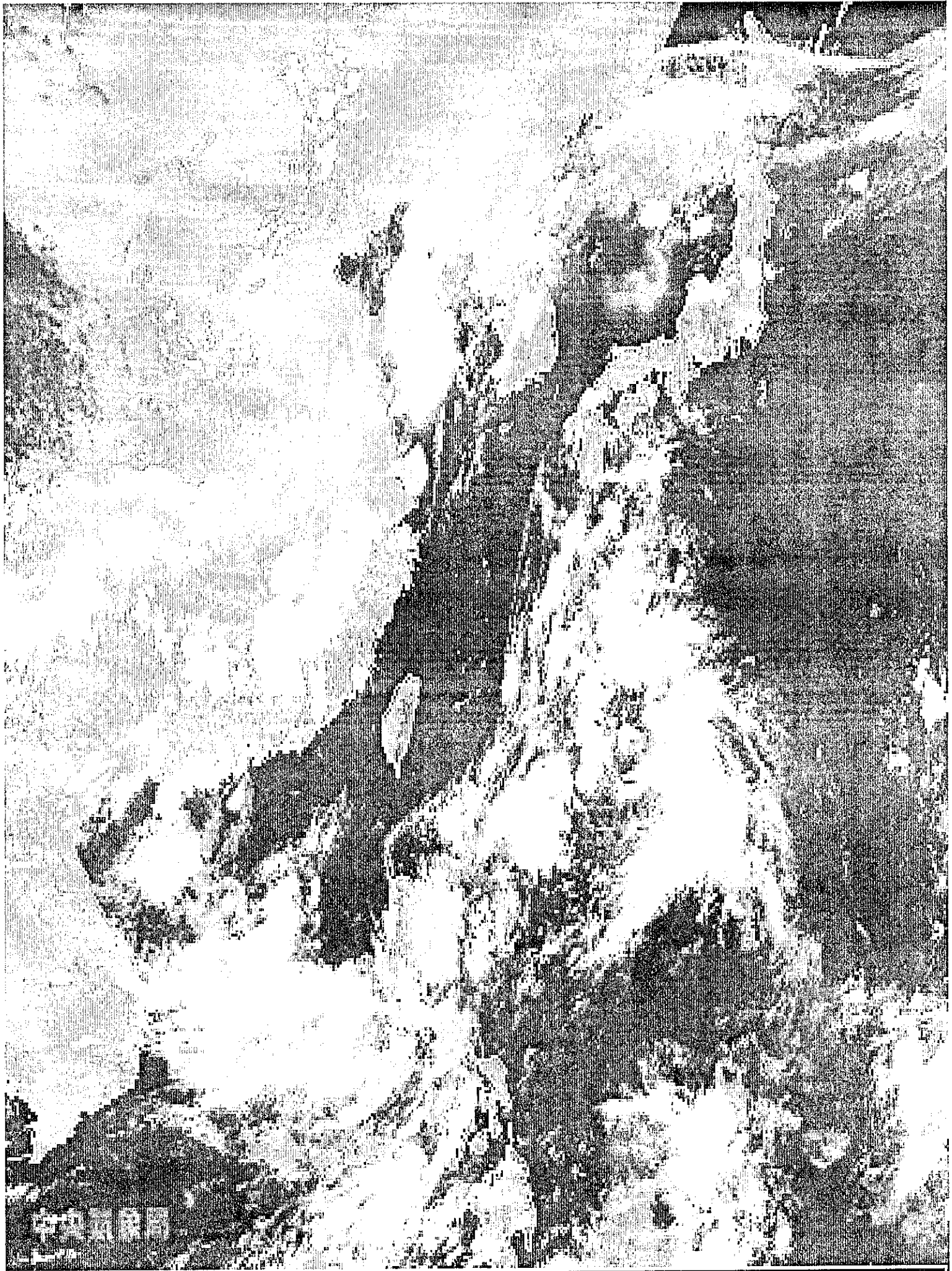
Northern and Central Luzon will experience monsoon rains while the rest of country will have mostly cloudy skies with scattered rainshowers or thunderstorms.

Moderate to strong winds blowing from the southwest will prevail over Luzon and its coastal waters will be moderate to rough. Elsewhere, winds will be light to moderate blowing from the Southwest with slight to moderate seas.

(in Filipino)

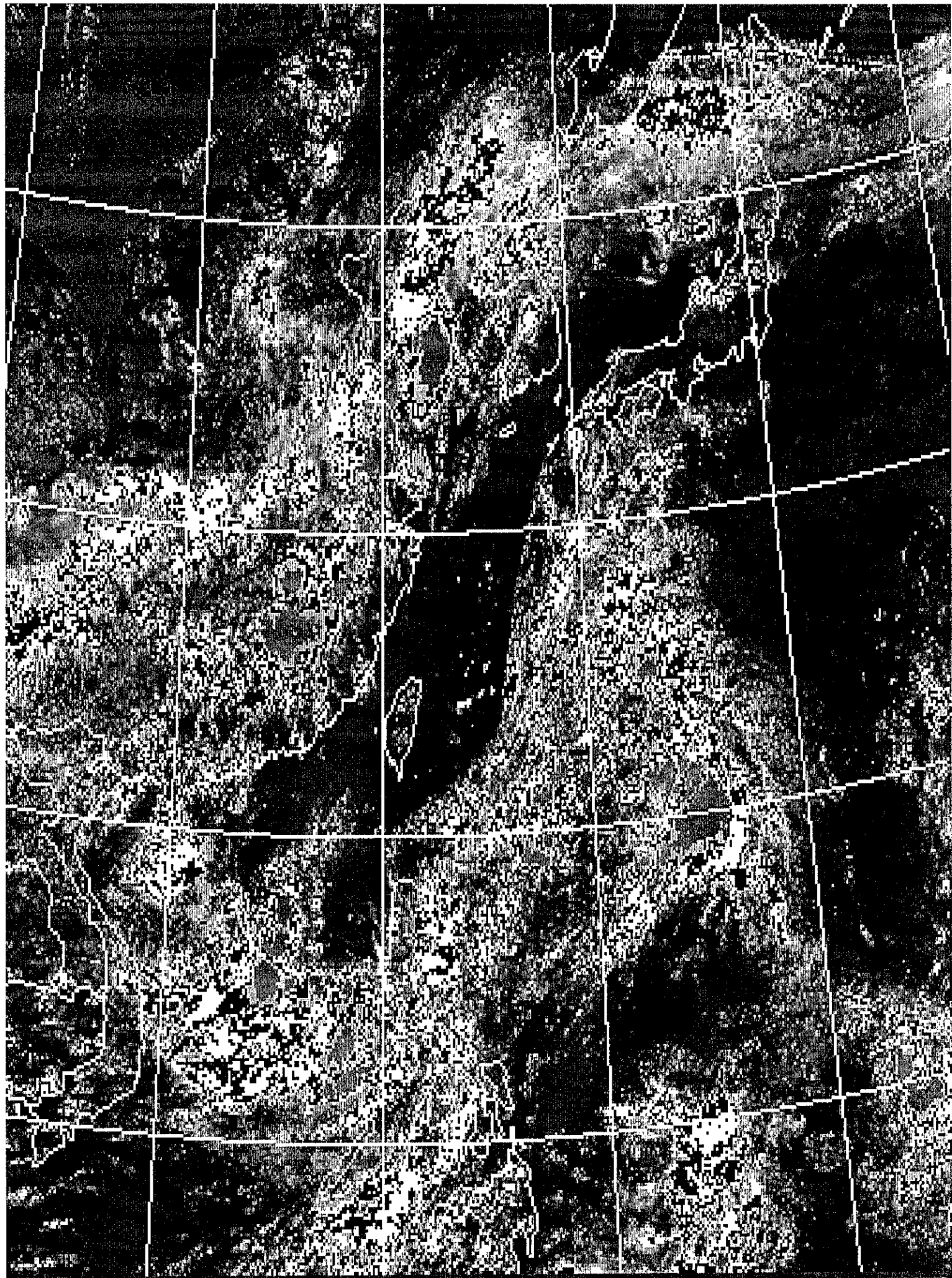


MTSAT2 紅外線雲圖 8/18 07:00



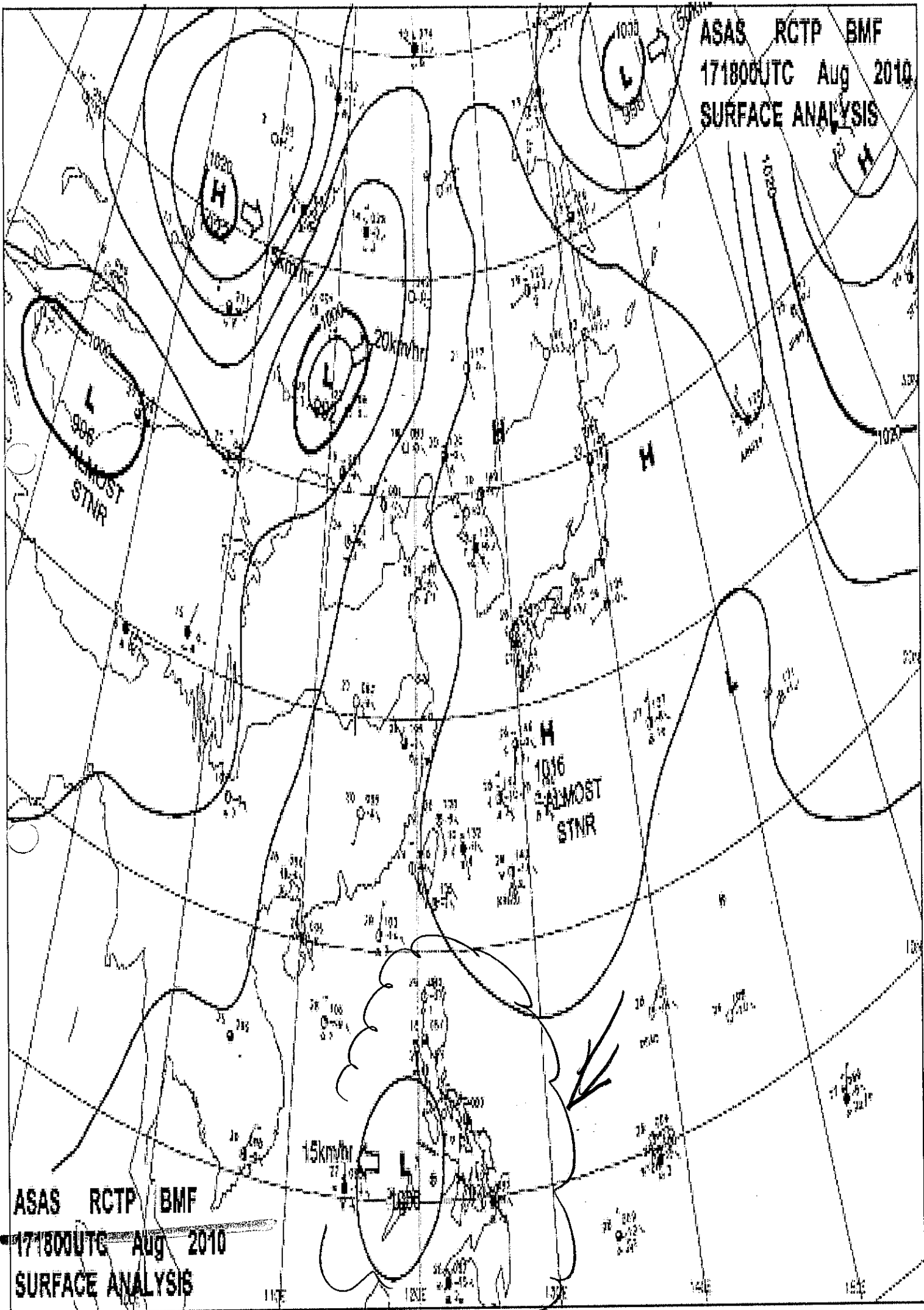
MISAT2 紅外線雲圖

8/26 15:30



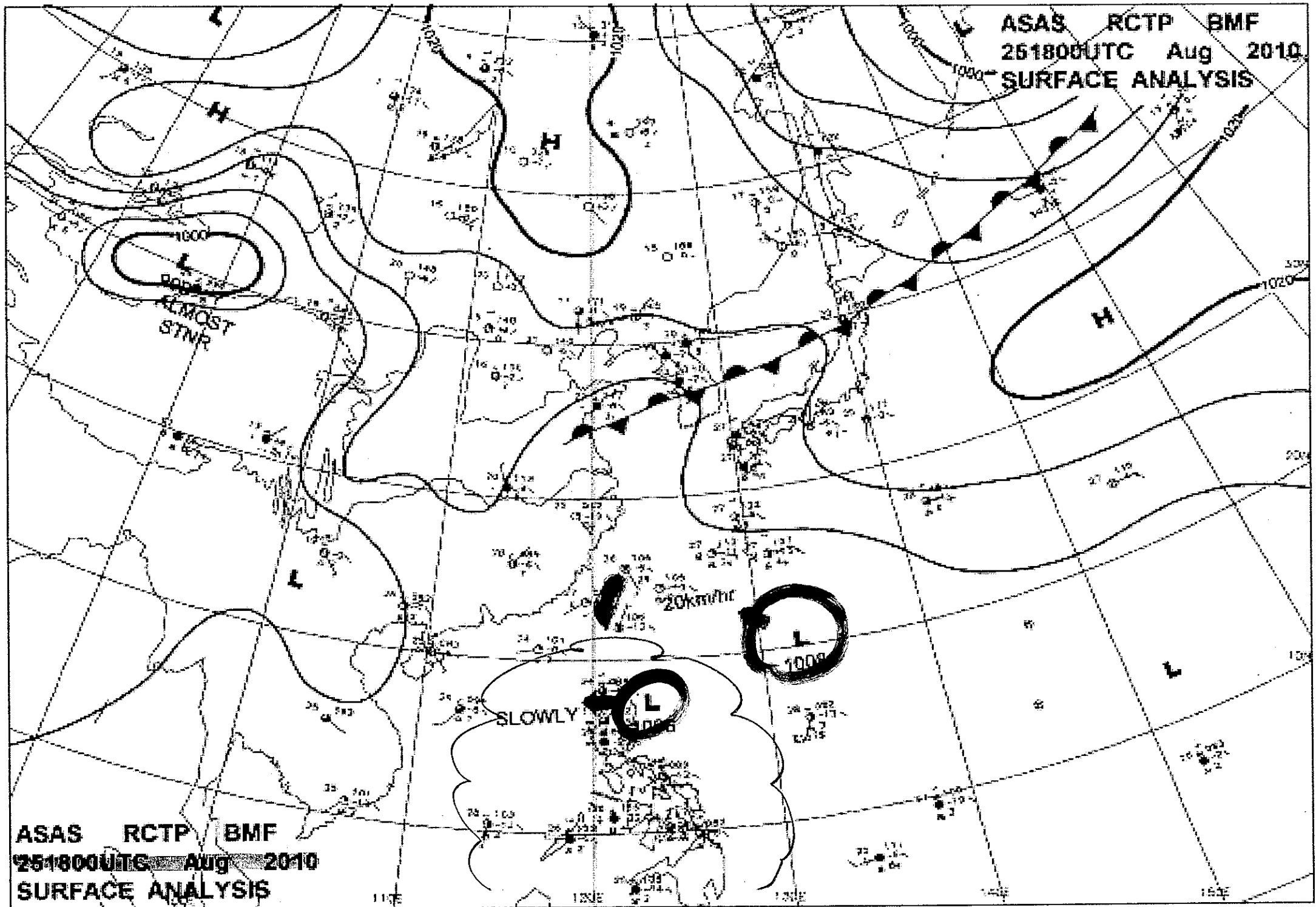
MTSAT2 紅外線雲圖 8/26 15:30

ASAS RCTP BMF
171800UTC Aug 2010
SURFACE ANALYSIS



ASAS RCTP BMF
171800UTC Aug 2010
SURFACE ANALYSIS

ASAS RCTP BMF
251800UTC Aug 2010
SURFACE ANALYSIS



ASAS RCTP BMF
251800UTC Aug 2010
SURFACE ANALYSIS

Subic Bay, 菲律賓

當地時間: 08:03 PHT (GMT +08) — [設置我的時區](#)

Lat/Lon: 14.8° N 120.3° E ([Google Map](#))

熱帶天氣特報: [Hurricane Danielle \(North Atlantic\)](#) [Tropical Storm Earl \(North Atlantic\)](#) [Invest 97 \(North Atlantic\)](#) [Hurricane Frank \(East Pacific\)](#)

現在狀況

Subic Bay, PH (機場)

最近更新時間: 1 hr 3 min 47 sec ago



25 °C
微雨

濕度: 94%

露點: 24 °C

風: 9 公里/小時 / 2.6 m/s from the 東南
偏南

氣壓: 1007 百帕 (上升中)

能見度: 12872.0 公里

紫外線: 0 out of 16

多雲時晴 548 m
雲: 陰天 2438 m
(地平線上)

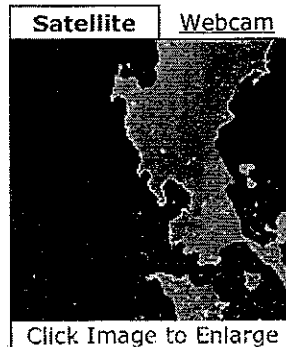
海拔: 17 m

Rapid Fire 更新:

啓用 關閉

現況來源:

PWS & 機場 機場 只限



- [Wunder地圖](#) NEW!
- [旅行計劃](#)
- [氣象站](#)

五天天氣預報

[自訂你的圖示!](#)

星期五	星期六	星期日	星期一	星期二
30° C 25° C	30° C 24° C	28° C 25° C	30° C 24° C	31° C 24° C
Chance of T-storms 30% 降水機會	T-storms 50% 降水機會	T-storms 70% 降水機會	Chance of T-storms 40% 降水機會	T-storms 50% 降水機會
Hourly	Hourly	Hourly	Hourly	Hourly

Today is forecast to be Warmer than yesterday.

較長時間天氣預報



最近更新時間: 2010年8月26日 下午08時00分世界標準時間

- 星期五**
可能有雷暴. 陰天. 最高溫度: 30 °C. 風 西南偏南 14 公里/小時. 30% 降水機會 (water equivalent of 3.51 mm). 高溫指數: 35 °C.
- 星期五晚上**
雷暴. 局部有雲. 最低溫度: 25 °C. 風 南 10 公里/小時. 50% 降水機會 (water equivalent of 15.23 mm).
- 星期六**
雷暴. 陰天. 最高溫度: 30 °C. 風 西南偏南 14 公里/小時. 50% 降水機會 (water equivalent of 8.40 mm). 高溫指數: 31 °C.
- 星期六晚上**
雷暴. 陰天. 最低溫度: 24 °C. 風 南 14 公里/小時. 60% 降水機會 (water equivalent of 29.36 mm).
- 星期日**
雷暴. 最高溫度: 28 °C. 風 西南偏南 18 公里/小時. 70% 降水機會 (water equivalent of 21.35 mm). 高溫指數: 32 °C.
- 星期日晚上**
雷暴. 陰天. 最低溫度: 25 °C. 風 南 10 公里/小時. 50% 降水機會 (water equivalent of 20.61 mm).