

HPAI control and prevention measure in Japan

**Flow of animal diseases information and
communication between field and government**

7th September, 2009

**Animal Health Division,
Food Safety and Consumer Affairs Bureau MAFF**

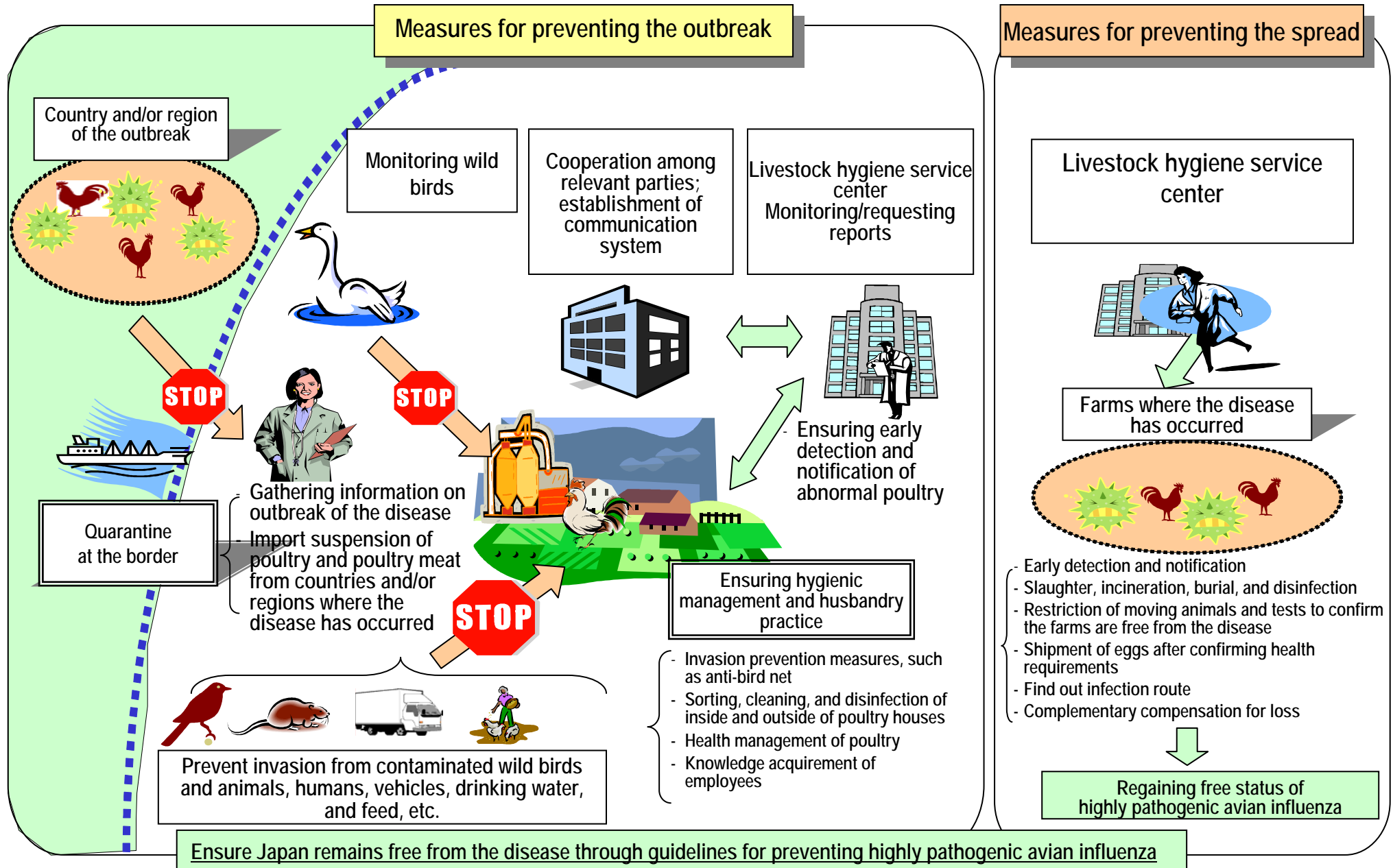
Japan

Outbreak of Poultry infection with HPAI

Year	Month	Serotype (Pathogenicity)	Affected Prefecture	The number of affected farm	The number of affected pourtly	Movemen t restriction area (radius)
2004	Jan	H5N1 (High)	Yamaguchi	1	30,000	30km
	Feb	H5N1 (High)	Ohita	1	14	30km
	Feb ~ Mar	H5N1 (High)	Kyoto	2	240,000	30km
2005 ~	Jun ~ Jan(2006)	H5N2 (Low)	Ibaraki Saitama	41	5,780,000	5km
2007	Feb ~ Jan	H5N1 (High)	Miyazaki	3	160,000	10km
	Jan	H5N1 (High)	Okayama	1	10,000	10km
2009	Feb ~ Mar	H7N6 (Low)	Aichi	7	1,600,000	10 5km

Measures against highly pathogenic avian influenza

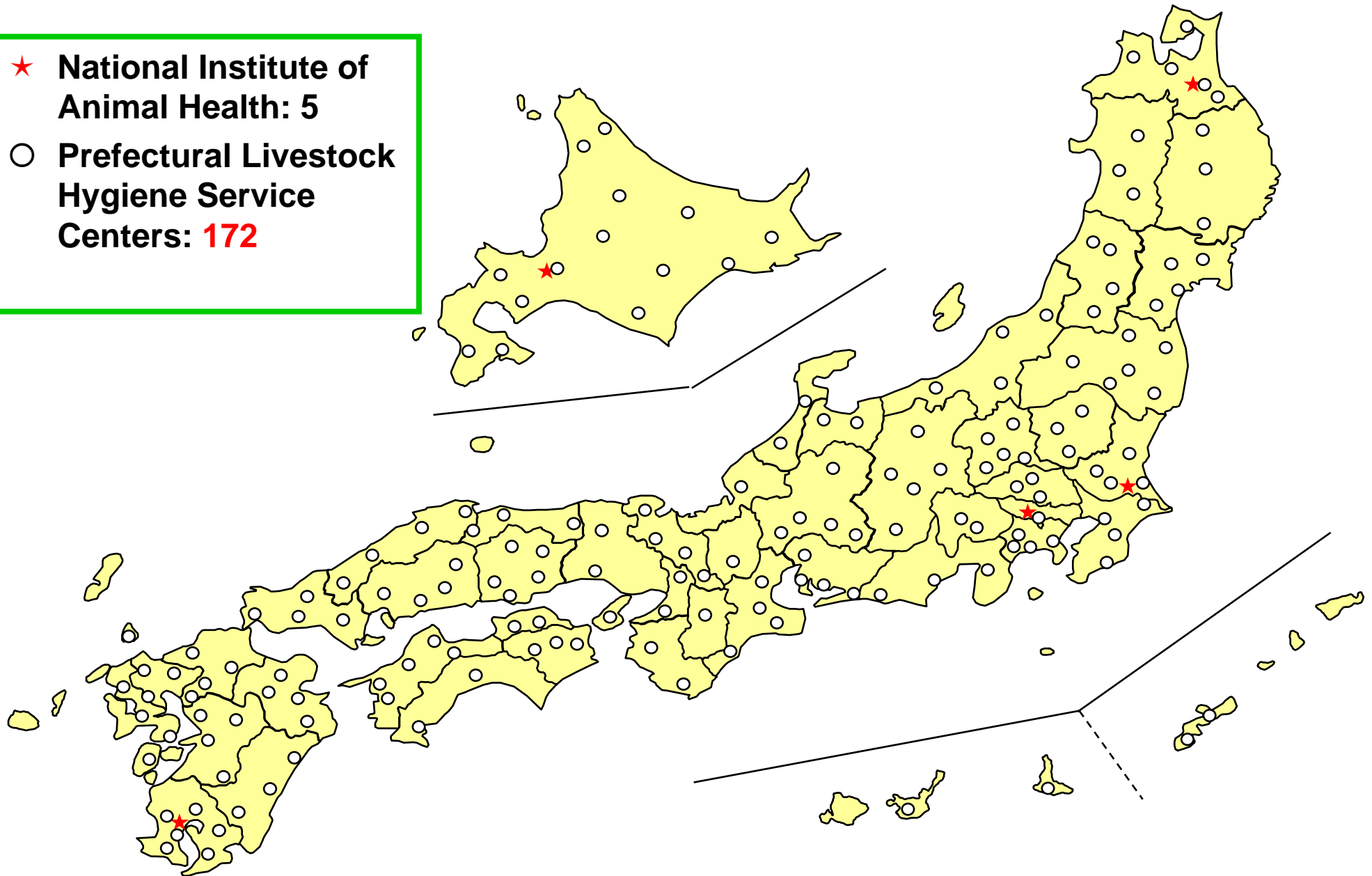
(1) Overview of measures



In the event of outbreak

Location of Animal Health Facilities

- ★ National Institute of Animal Health: 5
- Prefectural Livestock Hygiene Service Centers: 172



Communication Network

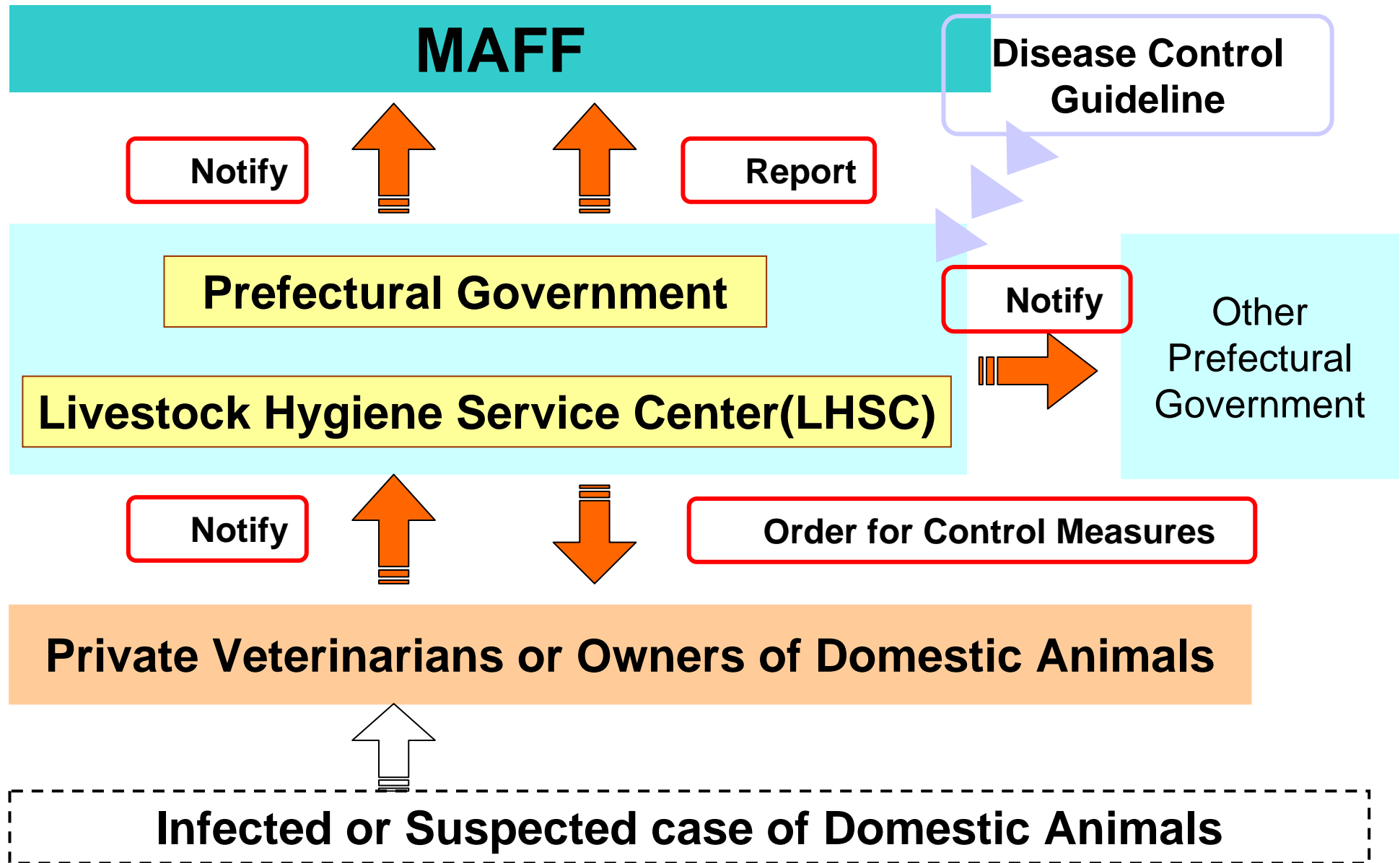
Emergency Communication Network

- **24-hour system**
- **Sharing a contact person list**
(MAFF Prefectural Govt)

Requests for report

- **The number of live and dead poultry etc., (Unit : week)**
- **Targeted farms :**
Every poultry farm where 100 birds or more are kept
- **Report : Farms LHSC (every month)**

Information Flow and Command Chain



Headquarters for disease control

MAFF

President Minister
Substitution Senior Vice-Minister
Vice-president Parliamentary Secretary
Vice-president Parliamentary Secretary
Deputy-president Vice-Minister
Member

- Director-General
- Director-General for Policy Coordination
- Director-General for International Affairs
- Director-General for Technical Affairs
- Director-General Food Policy Bureau
- Director-General Food Safety and Consumer Affairs Bureau
- Director-General Agricultural Production Bureau
- Director-General Livestock Industry Department
- Director-General Management Improvement Bureau
- Director-General Agriculture, Forestry and Fisheries Research Council

Prefectural Government

Livestock Hygiene Service Center (Local headquarters for disease control)

General group
Affected farmer group

- Pathological assessment unit
- Epidemiological research unit
- Control disease unit

Trace group
Medical examination group
Movement restriction group
Economical assessment group

Expert Group

Committee on Animal Health

**Sub committee
on
poultry diseases**

<9 members>
University, Research institution,
Pharmaceutical company,
Prefectural producer association,
Self-defense health protection
organization

**Sub committee
on
cattle & pig
diseases**

**Sub committee
on
prion diseases**

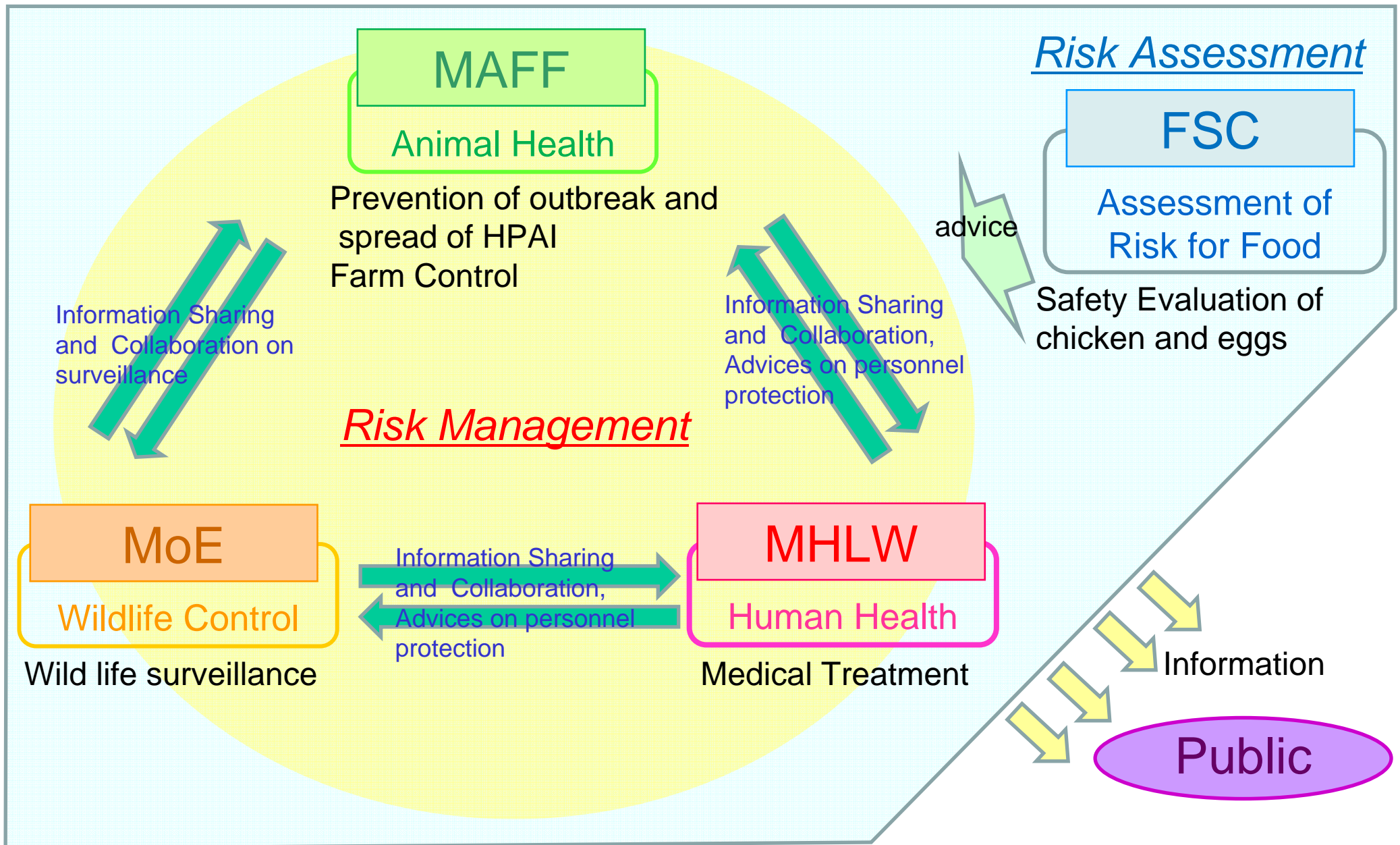
Scientific Advice for

- Establishing and reviewing manuals(guidelines)
- Implementation of preventive measures

Incentives for early reporting

- **Strengthening penalty for delayed reporting**
- **Financial support for the producers of affected farms in movement restriction area**
- **Preparedness of veterinary service and producers**

Framework of HPAI Control in Japan



Press Release

MAFF

- **All Prefectural Governments**
- **General Public**
- **Industries**
- **Relevant Associations , Agencies etc.**

Active surveillance

Type	Targeted surveillance	Intensified Surveillance
Area	The whole country	The whole country
Frequency	Every month	Once a year
Target farms	3 poultry farms / LHSC	Up to 29 farms / prefecture (*1)
Heads	10/ farm	10/ farm
Target virus (AI)	H5 or H7	H5 or H7
Test method	Virus isolation Serological test	Serological test Virus isolation (*2)

*1 random sampling from all poultry farms with 100 birds or more

*2 only for serological positive samples

Improvement of Biosecurity

December 2008

Inspection for Compliance of Rearing Hygiene Management Standard at all poultry farms

Targeted farms: Every poultry farm where 100 birds or more are kept (10,013 farms)

Inspection content: confirming the following points

1. human and vehicles
2. wild birds and animals
3. water and feed

Results

- 1 . 95% of surveyed poultry farms (9,522 farms) appropriately follow the Standard.
- 2 . 5% is improving their management practices.

Exercises for control disease

Purpose : Coordination, Publicity, Inspection, Improvement of the system for preventing the spread of HPAI

Simulation :

- Prefectual Unit
- Arrangement for control measure
- Establishment of crisis management system

Demonstration of equipment for disease control :

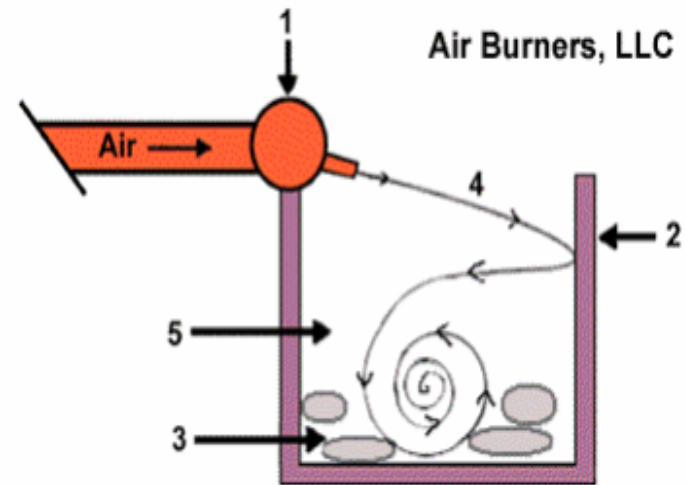
Traveling Incinerator (Air Burners)

Bird Culling Machine by Bubbles

Large Disinfection Machine

Equipment for disease control

Traveling incinerator



Equipment for disease control

Bird culling machine by bubbles



Equipment for disease control

Large disinfection machine





~Thank you for your attention! ~