



PAC Multilateral Recognition Arrangement (MLA) and its success in meeting the needs of industry and government regulators

26 May 2009

Phua Kim Chua
Singapore Accreditation Council

Outline

- Introduction to PAC
- PAC MLA operation
- PAC & IAF/ILAC Cooperation
- How does Multilateral Recognition Arrangement work and its application

What is PAC

Organization:

An **association of Accreditation Bodies** for certification in the APEC member economies and other interested parties

Mission:

To represent the interests of Asia and/or Pacific economies nationally, regionally and internationally in the area of certification / registration body accreditation and related activities, in support of APEC, IAF and WTO/TBT aims and objectives.

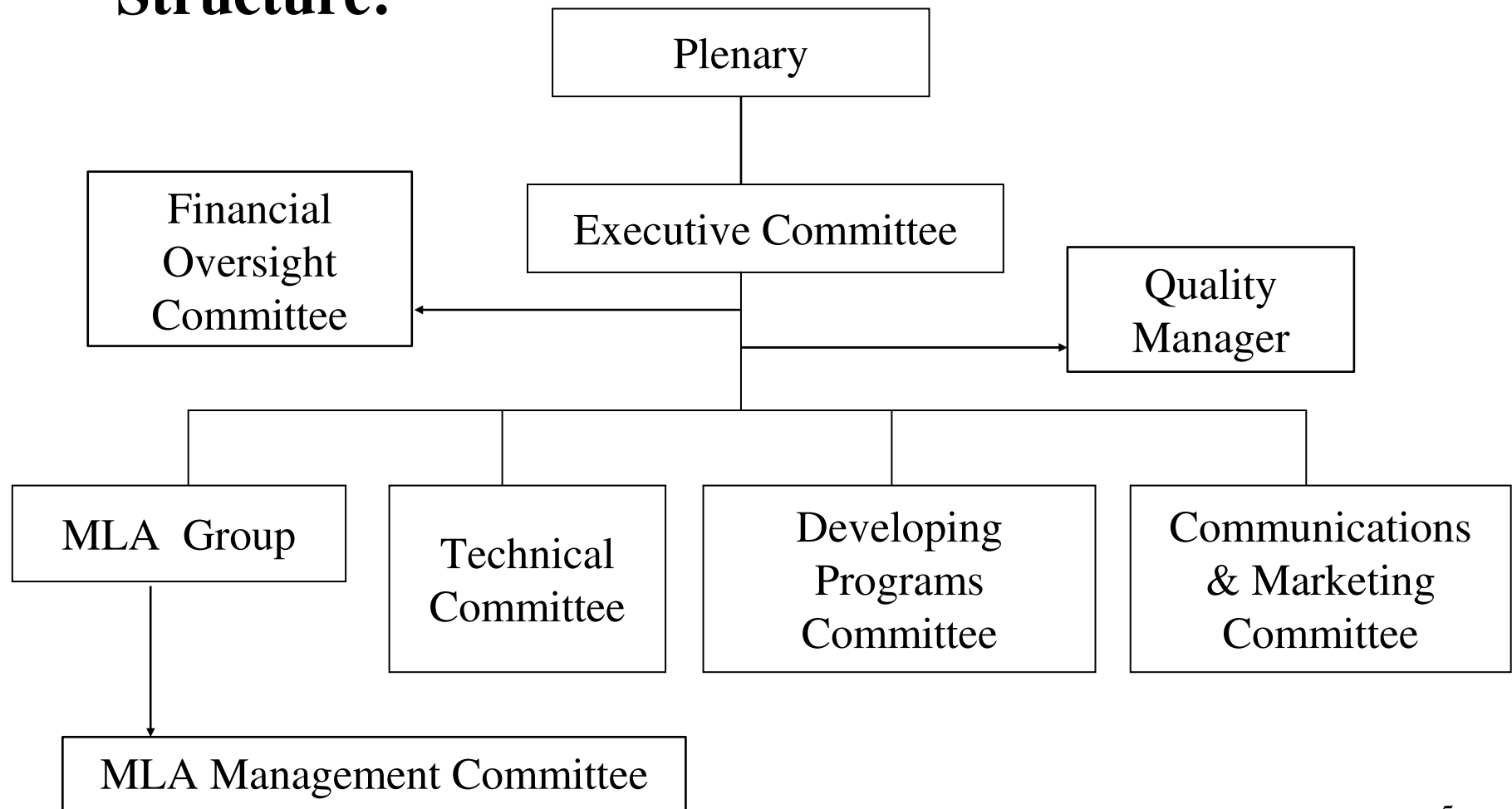
What is PAC

Objectives:

- to facilitate trade and commerce among economies in the Asia and/or Pacific region.
- to create **a global system** that grants international recognition of certification or registration of management systems, products, services, personnel and other programs of **conformity assessment**.

What is PAC

Structure:



What is the PAC MLA

- The PAC MLA is a formal arrangement between PAC members
- The MLA (Multilateral Recognition Arrangement) is based on the **equivalence** of accreditation programs operated by accreditation body members, verified through **peer evaluation** among those accreditation body members

PAC MLA Programs

- MLA for Quality Management Systems
- MLA for Environmental Management Systems
- MLA for Product Certification Systems

PAC MoU Signatories

Full Members - 22

JAS-ANZ (Australia & New Zealand)

SCC (Canada)

CNAS (P.R. China)

HKAS (Hong Kong, China)

DAC (Dubai)

NABCB (India)

KAN (Indonesia)

IAS (Iran)

JAB (Japan)

JASC (Japan)

JIPDEC (Japan)

KAB (Korea, R.)

KAS (Korea, R.)

STANDARDS MALAYSIA (Malaysia)

EMA (Mexico)

PNAC (Pakistan)

PAO (Philippines)

SAC (Singapore)

TAF (Chinese Taipei)

NAC (Thailand)

ANSI (USA)

BoA (Vietnam)

Associate Members - 2

AACBF (Asian Accredited
CBs Federation)

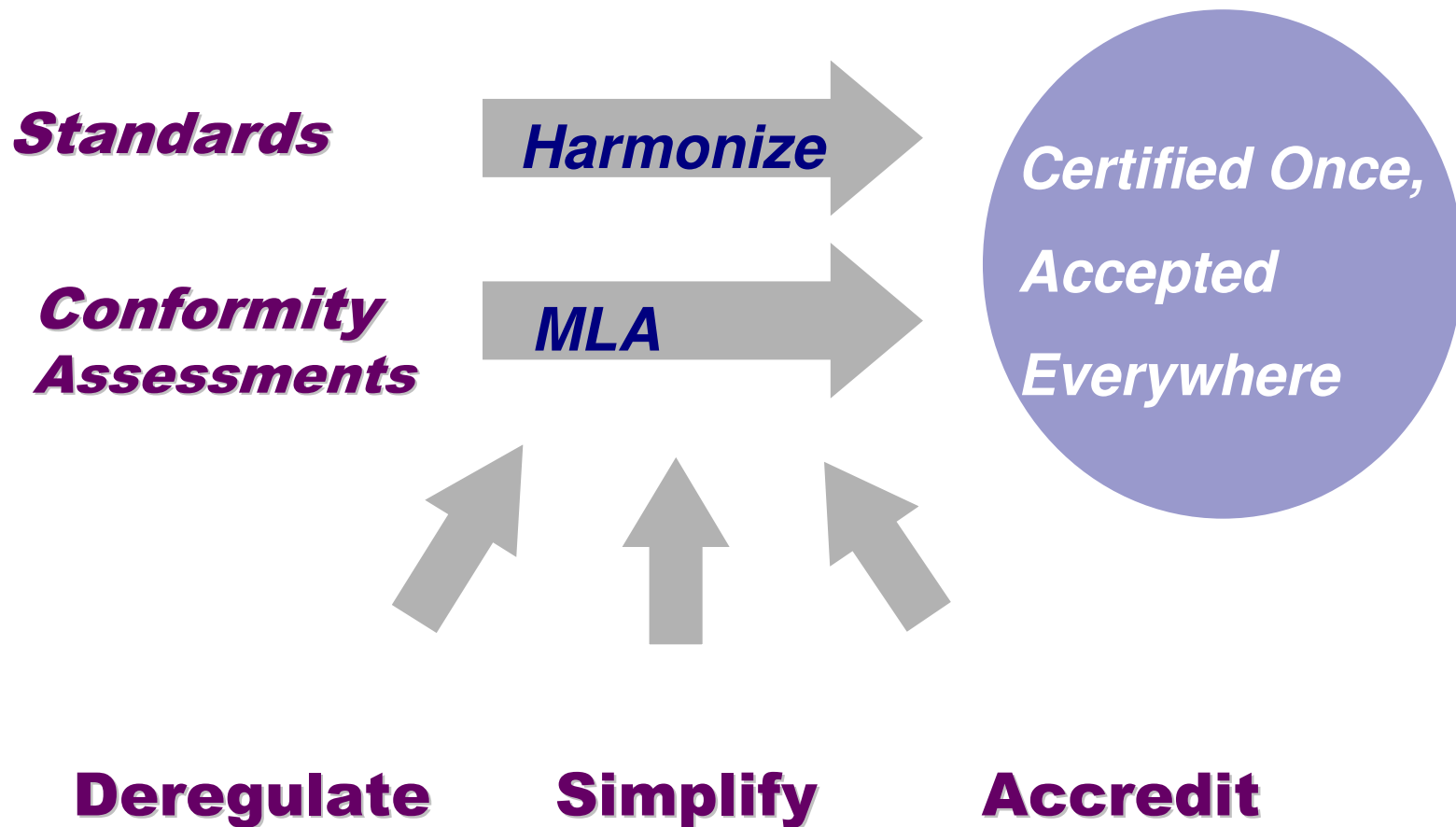
IIOC (Independent Int'l
Association for CBs)

PAC MLA Programs & Signatories

(as of May 2009)

Organization	QMS MLA	EMS MLA	Product MLA
JAS-ANZ (Anstralia and New Zealand)	1998/1/24	2003/11/27	2004/7/8
SCC (Canada)	1998/1/24	2003/11/27	2004/7/8
CNAS (China)	1998/11/5	2004/7/8	2008/6/26
HKAS (Hong Kong, China)	2003/11/27		
NABCB (India)	2002/8/7	2007/7/12	
KAN (Indonesia)	2000/8/24	2004/7/8	
JAB (Japan)	1998/1/24	2003/11/27	
KAB(Rep of Korea)	1999/7/29	2004/7/8	
STANDARDS MALAYSIA	1998/11/5	2005/12/31	
EMA (Mexico)	2001/9/6	2004/7/8	2004/7/8
PAO (Philippines)	2002/8/7	2007/7/12	
SAC (Singapore)	1998/11/5		2006/12/20
TAF (Chinese Taipei)	2002/8/7	2004/7/8	2007/7/12
NAC (Thailand)	2000/8/24	2003/11/27	
STAMEQ (Vietnam)	2007/7/12		
ANSI (U.S.A.)			2007/7/12
KAS (Rep. of Korea)			2007/7/12

The Goal of the PAC MLA



Definition (ISO/IEC 17000:2004)

Conformity Assessment:

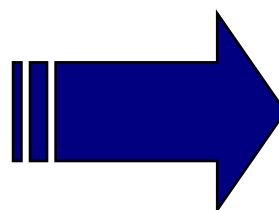
demonstration that **specified requirements** related to a product, process, system, person or body **are fulfilled**.

Accreditation:

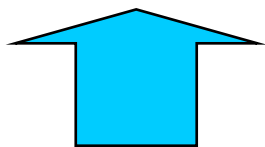
third-party attestation related to a conformity assessment body conveying formal demonstration of its **competence** to **carry out** specific conformity assessment task.

Principles of Conformity Assessment

1. Objectivity
2. Impartiality
3. Competency
4. Independence
5. Transparency
6. Consistency



Confidence



supported by
robust **peer evaluations**

MLA Peer Assessment Process



PAC MLA Programs - Requirements

PAC MLA members are required to:

- Maintain conformance with ISO/IEC 17011;
- Assess the conformity of certification bodies to ISO/IEC 17021 in the fields of QMS (ISO 9001) & EMS(ISO 14001) and relevant IAF Mandatory Documents;
- Assess the conformity of certification bodies with ISO/IEC Guide 65 and IAF Guidance in the field of product certification.

PAC MLA Programs - Consistency of Peer Evaluation

Requirements for Peer Evaluators

- Have relevant experience
- Attend PAC training courses & individual performance is evaluated
- Participate in a peer evaluation as a trainee & performance is evaluated
- Participate in a peer evaluation as a trainee team leader & performance is evaluated
- Attend experienced peer evaluators workshop
- On-going evaluation of performance

PAC MLA Programs - Consistency of Peer Evaluation

Requirements for Evaluation Reports

- Description of the practices of ABs
- Independent Committee reviews the report and makes recommendation
- MLA Group approves new members

PAC & IAF/ILAC Cooperation

- IAF focuses on accreditation of Management System Certification, Product Certification, Personnel Certification & Inspection Body
- ILAC focuses on Laboratory Accreditation & Inspection Body Accreditation

The PAC & IAF Cooperation

**Pacific Accreditation
Cooperation (PAC)**

**European
cooperation for
Accreditation (EA)**

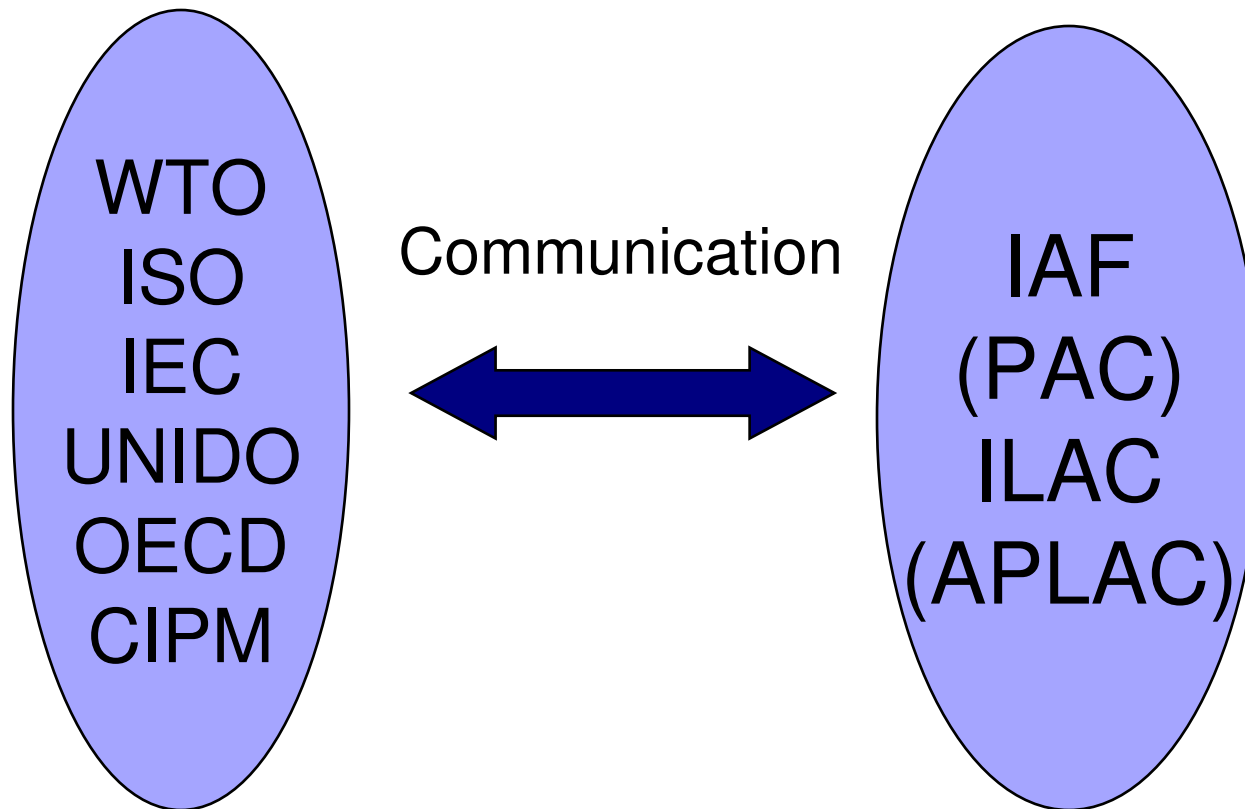


**INTERNATIONAL
ACCREDITATION
FORUM
(IAF)**

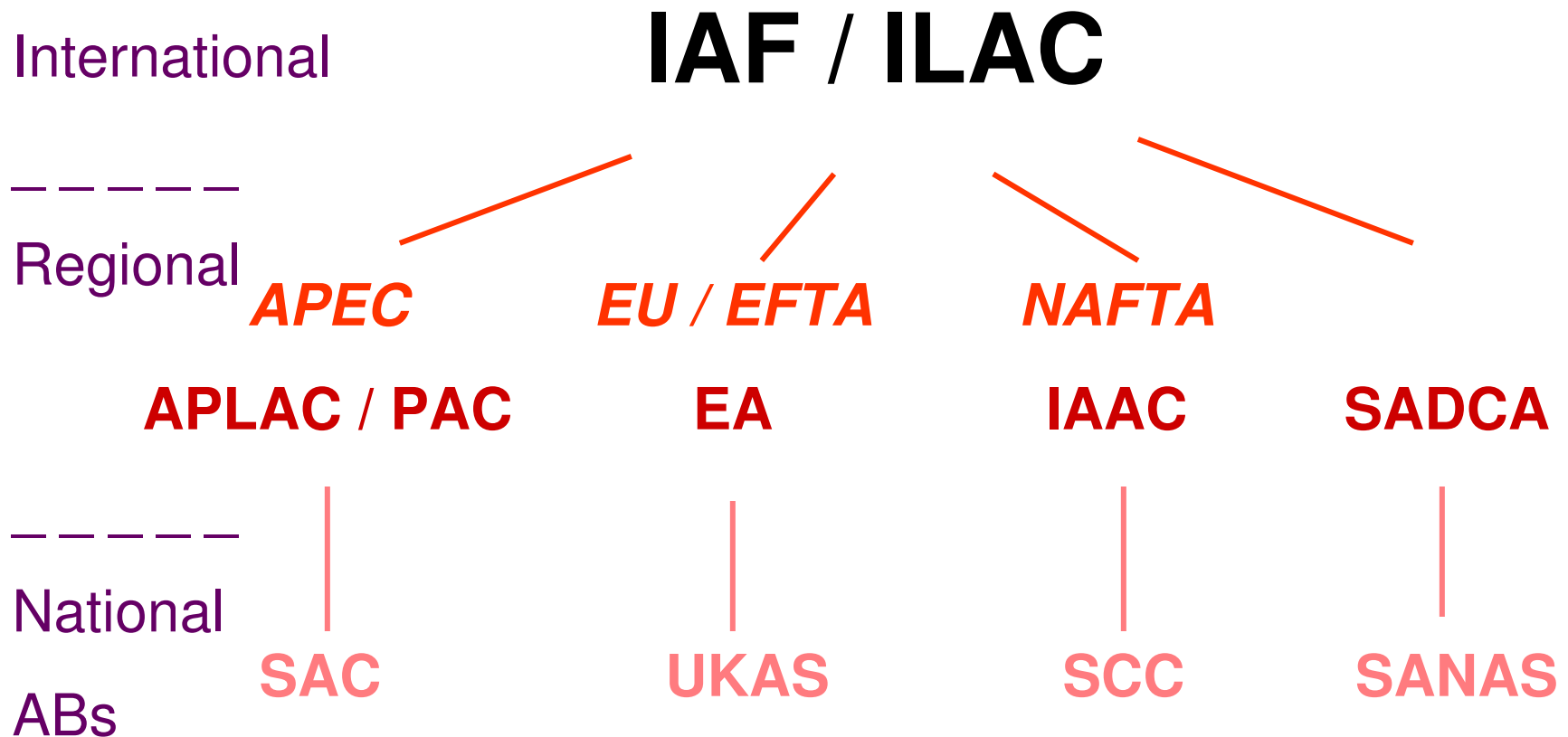
**Inter American
Accreditation
Cooperation (IAAC)**

**Southern African
Development
Community
Accreditation (SADCA)**

Cooperation



Cooperation



IAF MoU & MLA Signatories

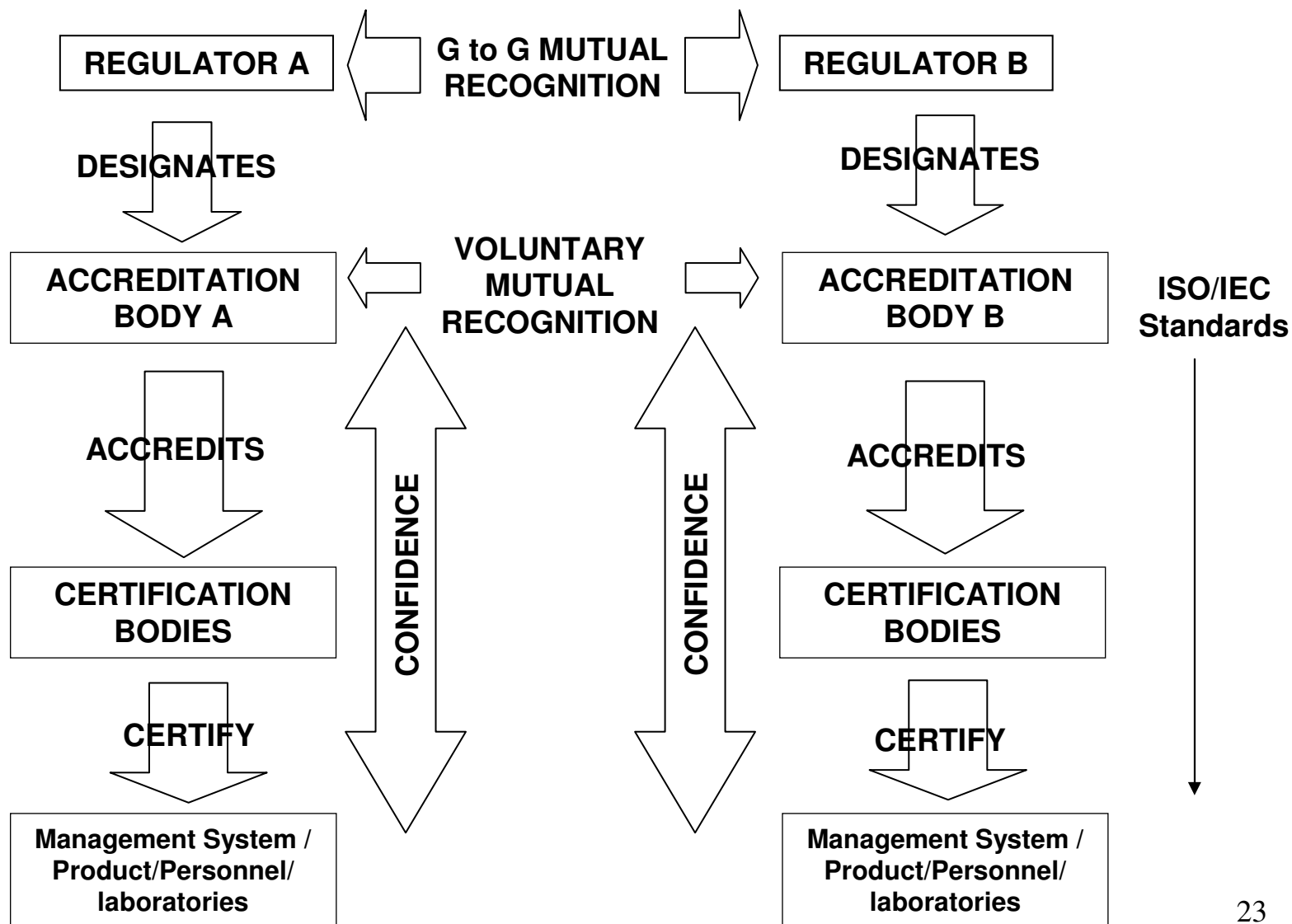
- **MoU Members: 54 ABs (52 Economies)**
- **MLA Signatories:**
 - QMS MLA: 3 Regional Accreditation Groups (EA, PAC & IAAC) and 39 ABs
 - EMS MLA: 2 Regional Accreditation Groups (EA & PAC) and 36 ABs
 - Product MLA: 2 Regional Accreditation Groups (EA & PAC) and 28 ABs

PAC & IAF/ILAC Joint Activities

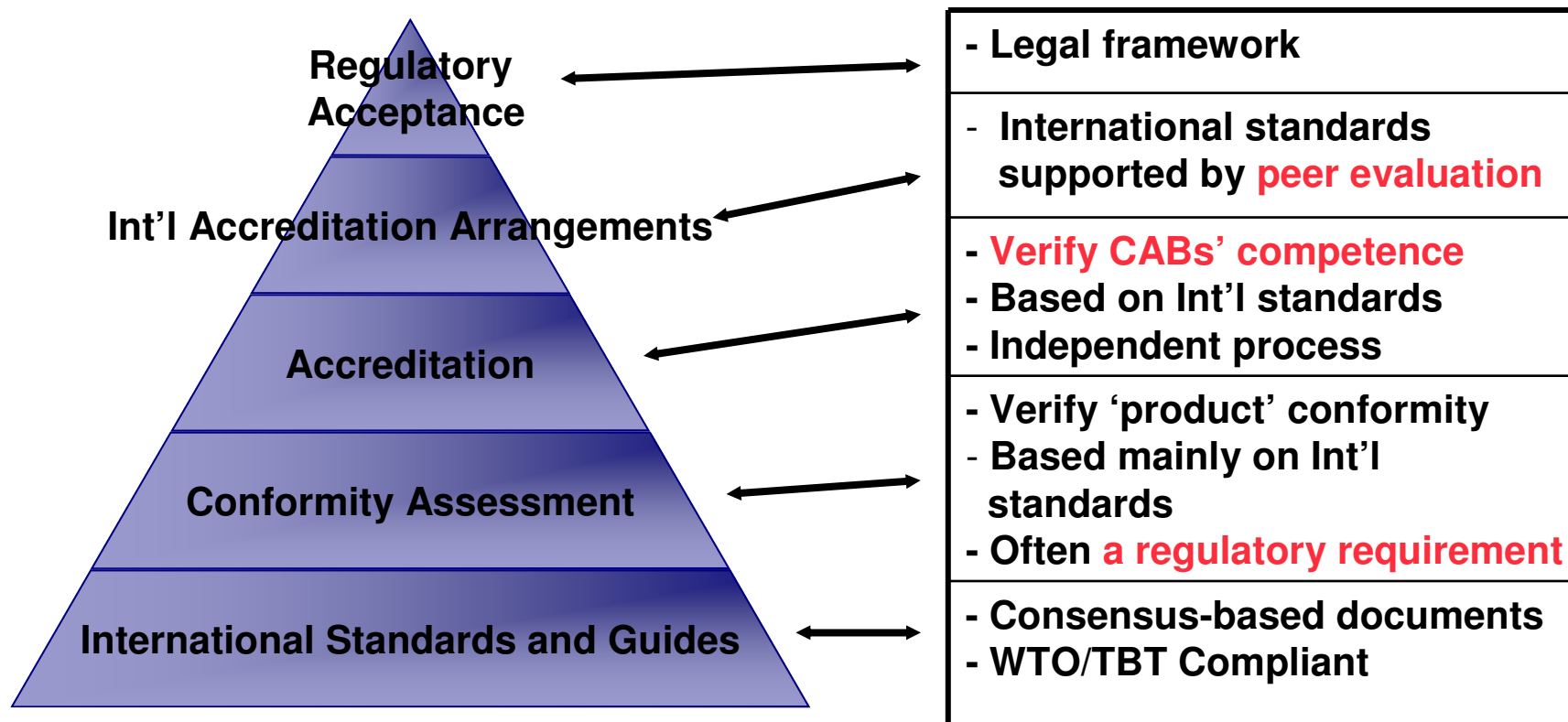
Activities to ensure consistency

1. IAF/ILAC Joint Working Group for Training Peer Evaluators
2. IAF/ILAC Joint Working Group for Developing Guidance on Application of ISO/IEC 17011 and related standards
3. Joint training for IAF/ILAC Peer Evaluators
4. Enhance communication with end-user.

How does multilateral arrangement work



Level of Conformance & Acceptance



3 ways to using accreditation

- Before accepting the **certificate issued by an AB to a CB**, Regulator may evaluate the AB.
- Regulator accepts an AB's **report on a CB** and issues its own certificate to CB.
- **After** accepting an AB's report or certificate, the Regulator conducts a **simple assessment on the AB**.

MLA application among PAC members

- Accepting and employing MLA:
Canada, Australia, Chinese Taipei, Singapore

Weakness:

- No confidence with 3rd party assessments (AB)
- Regulators need to amend the regulation.
- Regulators do not fully understand accreditation

Benefits of APEC EE MRA

- **Facilitate trade of Electrical and Electronic Equipment :**
 - **Reduce cost and time to market**
 - **No retesting and re-certification**
 - **Provide market access certainty**
 - **Regulator does not exercise 'approval' or 'rejection'**

APEC EE MRA – Potential for more participation

	APEC
1.Information Exchange	17 out of 21
2.Acceptance of Test Reports	5 out of 21
3.Acceptance of Certification	4 out of 21

Where can EE MLA start?

- Information Technology Equipment (ITE)
 - have less technical differences among members.
- ITE are based on IEC and ISO standards.
- Most member economies have accreditation bodies for testing and certification.

Ultimate Goal of PAC MLA Activities

“One World, One Accreditation”
- Certified once,
Accepted everywhere -

Thank you for attention

Phua Kim Chua
E-mail: phua_kim_chua@spring.gov.sg

