

WCO
IT Conference & Exhibition



Seoul

April 2008
Japan Customs

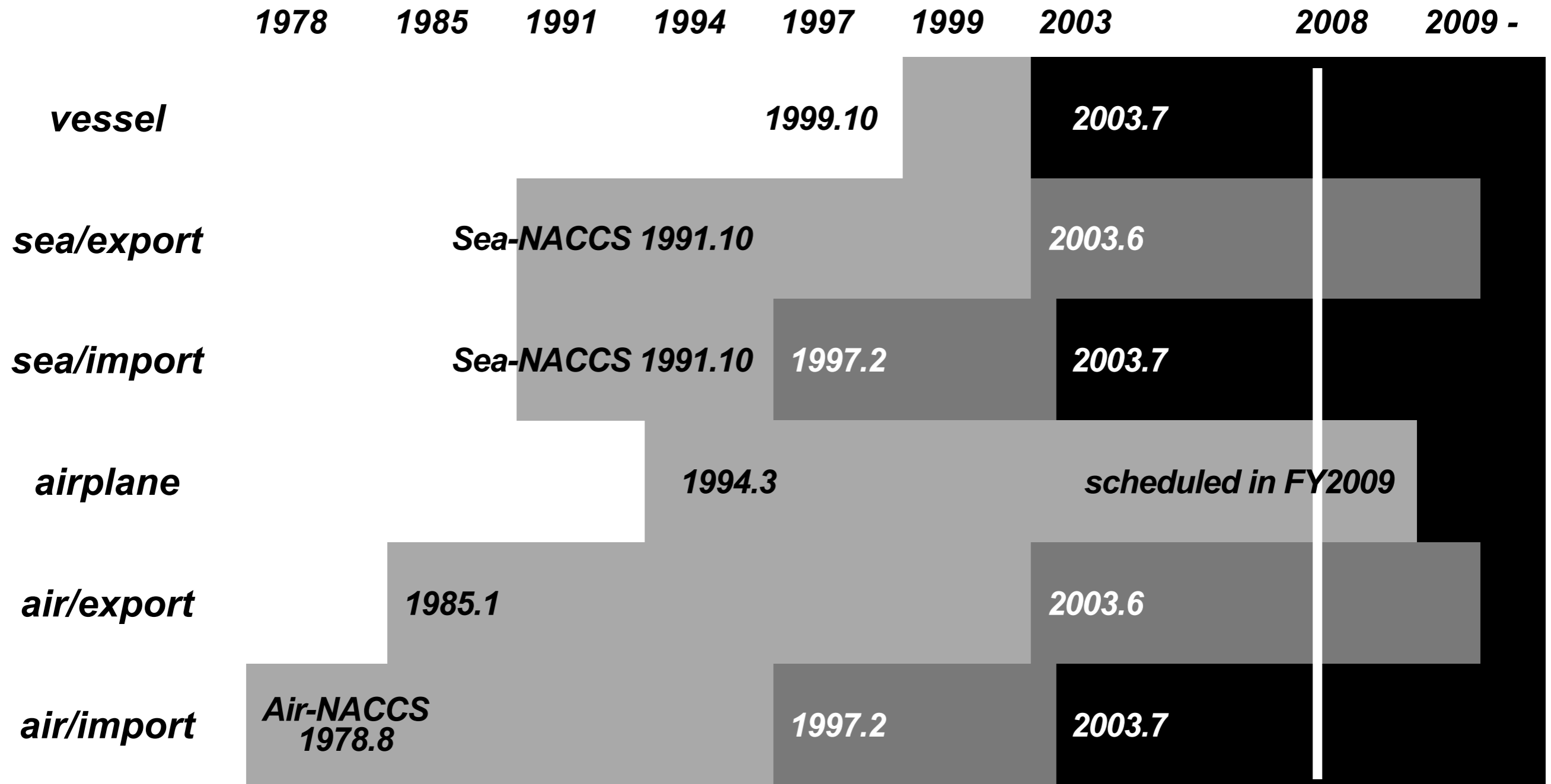
National Single Window ***- Trade Information Highway***

NACCS provides National Single Window Environment

- **Both cargo & vehicle**
- **Both sea port & airport**
- **Both import & export**
- **Both government and private**

& Information sharing

History - Trade Information Highway

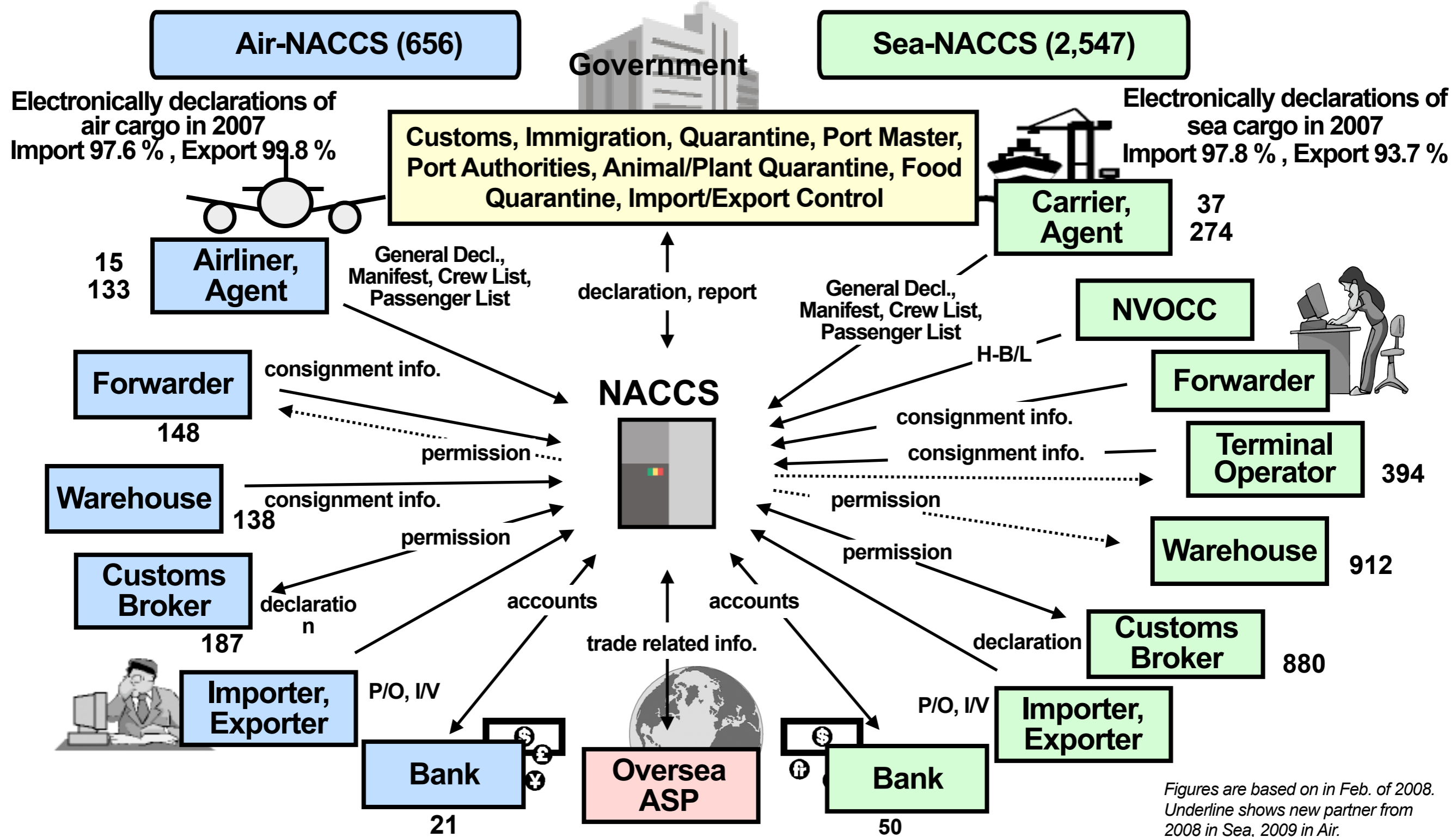


electronic

one stop

single window

National Single Window - Trade Information Highway

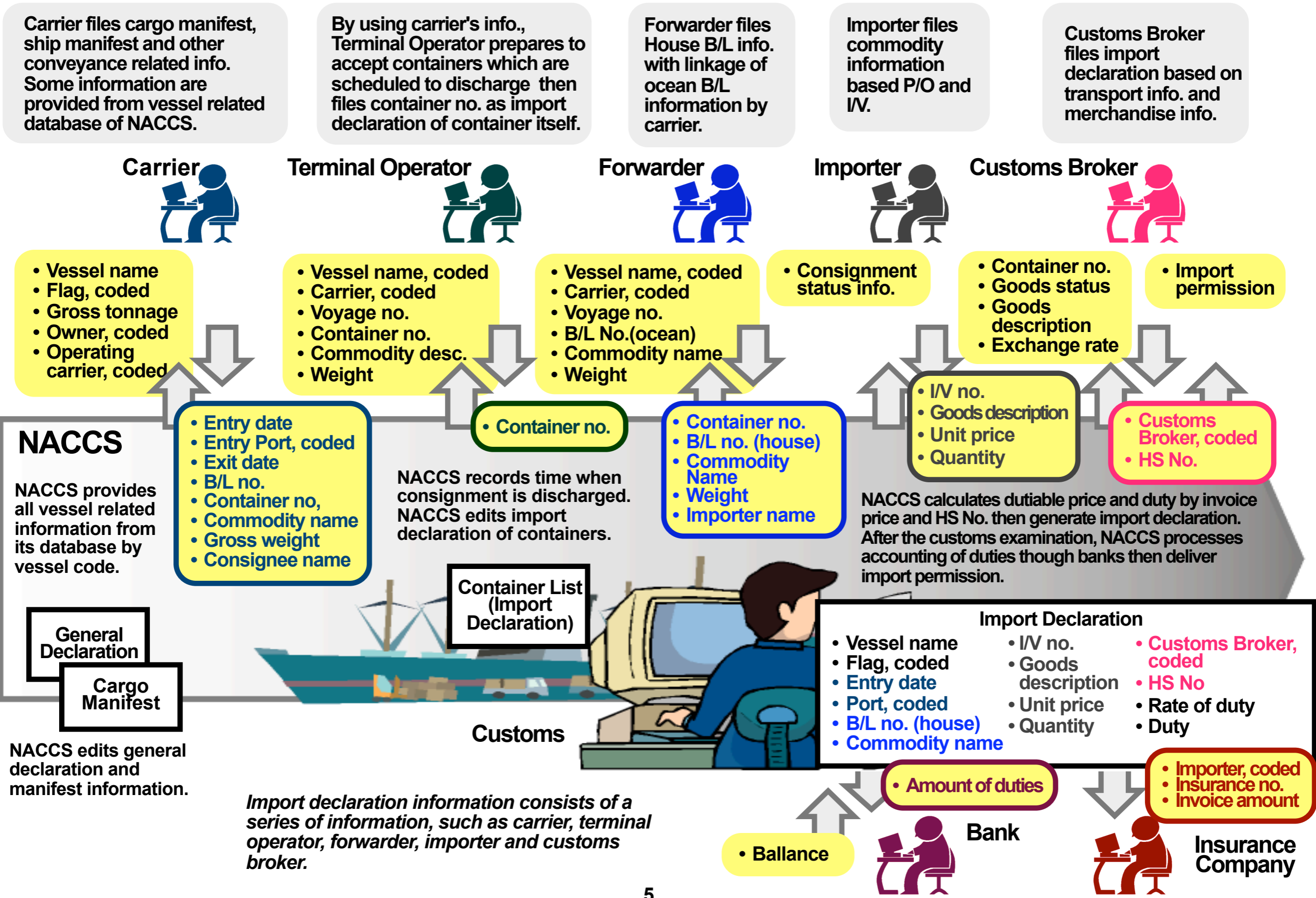


Figures are based on in Feb. of 2008. Underline shows new partner from 2008 in Sea, 2009 in Air.

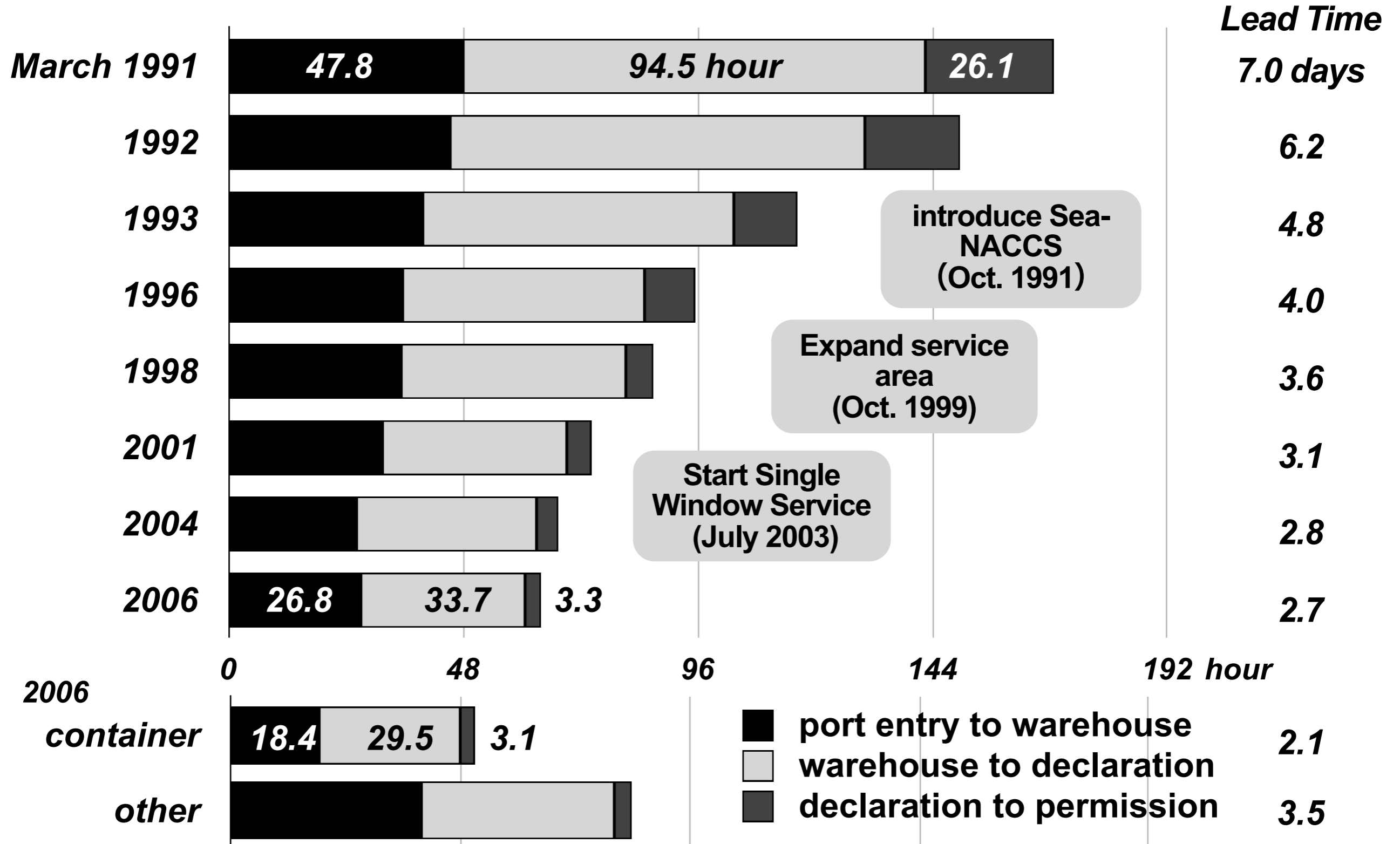
- Paperless trade
- Non-stop service
- Harmonization
- Facilitation
- Cost reduction

Expand service (importer, exporter, insurance companies, NVOCC), Linkage with overseas Authorized Service Providers
 Back-up center, reduce daily maintenance period
 XML (invoice, packing list, etc.)
 reduce forms, reduce input data elements
 integration of air cargo system and sea cargo system, business process reengineering

How National Single Window works - Trade Information Highway



Lead Time Survey - sea cargo • import



Integration

Today

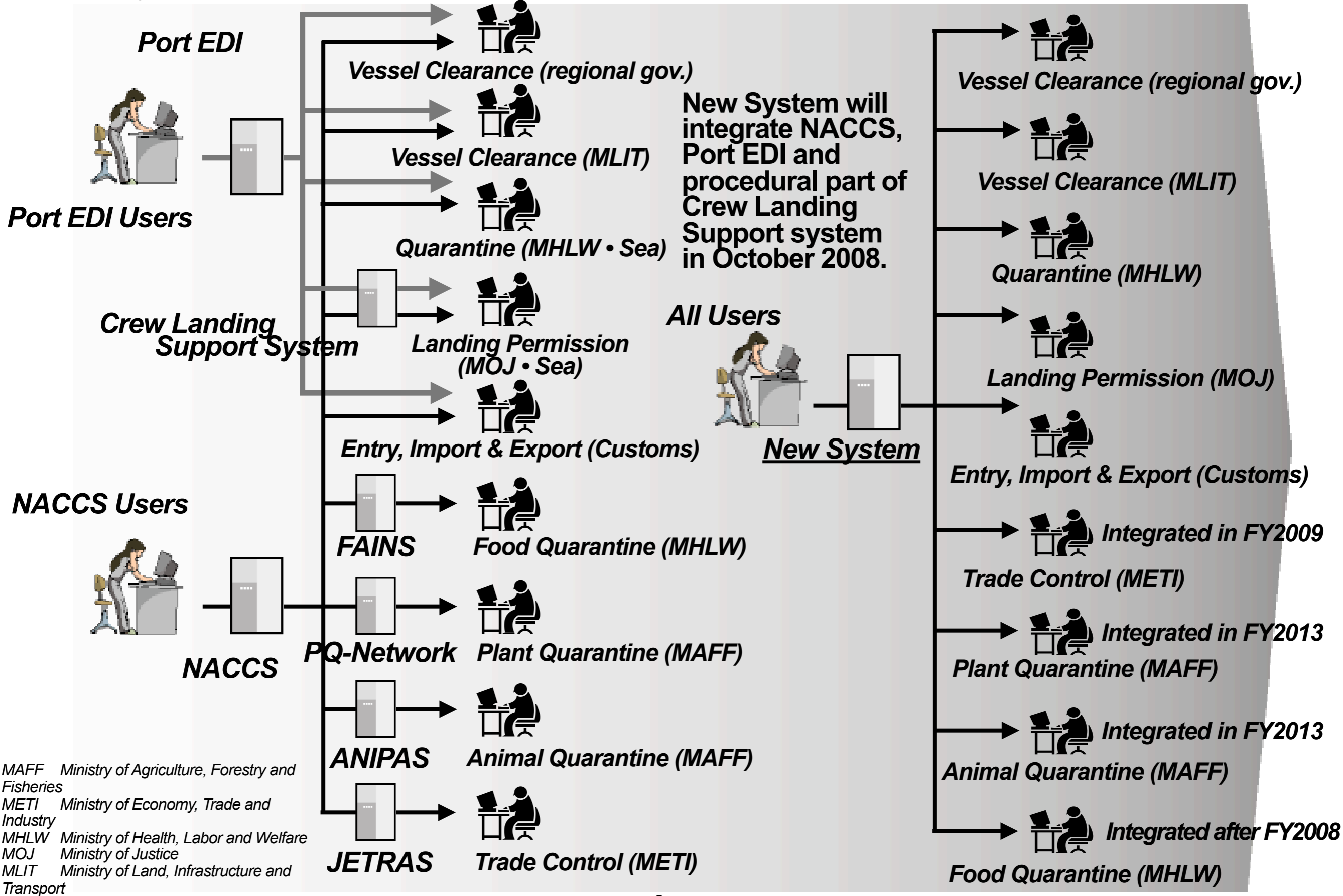
Each agency has own procedure processing system, such as quarantine, food sanitary, immigration and coast guard. Even single window portal, currently we have two, NACCS and Port EDI.

Tomorrow

GOJ will integrate current procedural systems into one new system one by one. First of all, NACCS, Port EDI and procedural part of Crew Landing Support System are schedule to be unified into one system in October 2008 therefore we will have only one window for governmental procedures.

Today

Tomorrow



MAFF Ministry of Agriculture, Forestry and Fisheries
 METI Ministry of Economy, Trade and Industry
 MHLW Ministry of Health, Labor and Welfare
 MOJ Ministry of Justice
 MLIT Ministry of Land, Infrastructure and Transport

Networking expand to foreign countries

Today

NACCS is domestic only.

Trader can not exchange trade related information to parties related in abroad.

Tomorrow (from October, 2008)

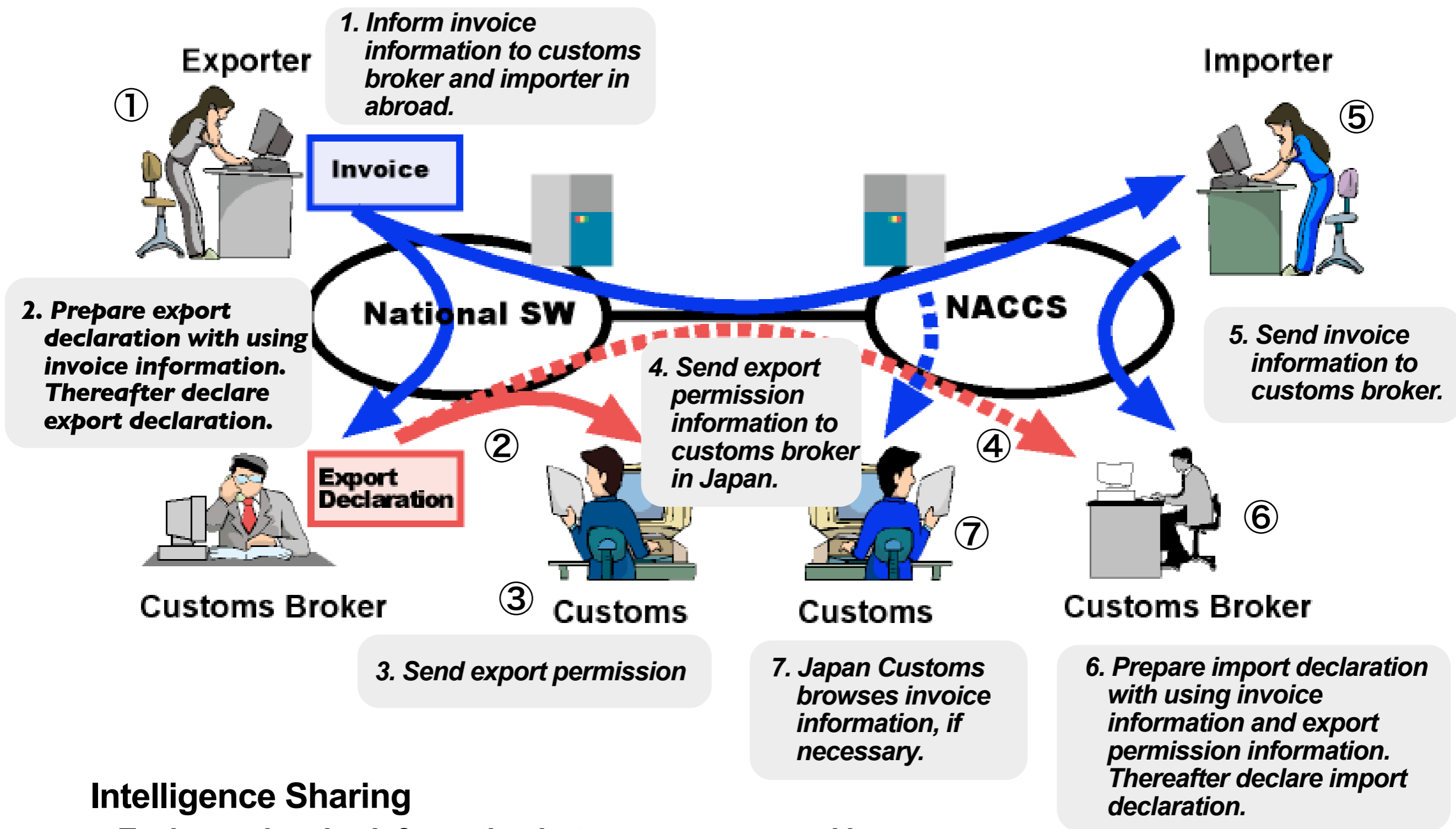
Connect overseas ASPs so that trader could exchange invoice, packing list information through NACCS.

Japan Customs is considering to check certificate of origin in paperless at import declaration.

Concept of Intelligence Sharing between Importer and Exporter

EXPORT COUNTRY

IMPORT COUNTRY



Intelligence Sharing

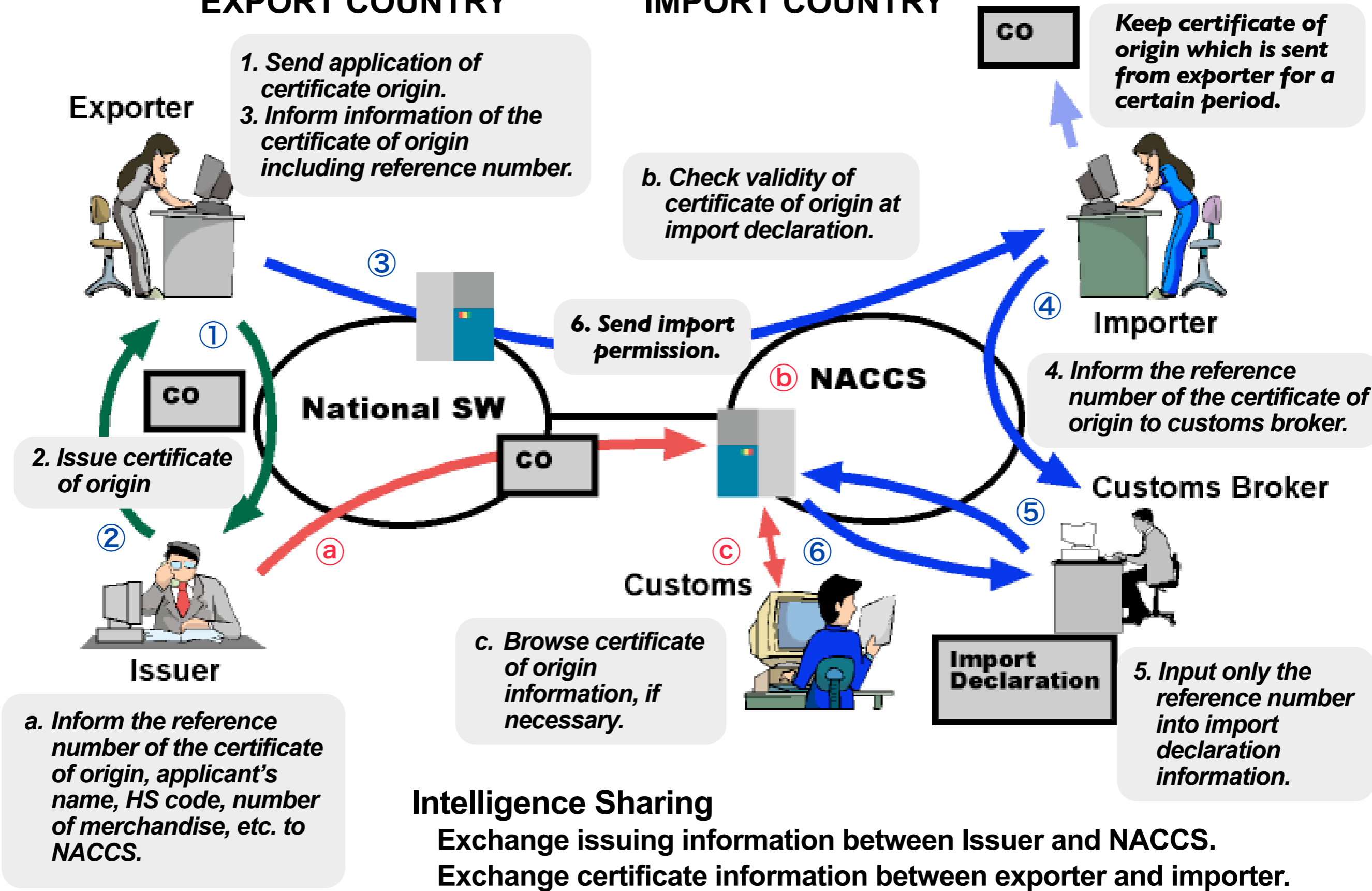
Exchange invoice information between exporter and importer.

Exchange transport information between exporter/customs broker and importer/customs broker.

Concept of Automation for Confirmation of Certificate of Origin

EXPORT COUNTRY

IMPORT COUNTRY



Intelligence Sharing

Exchange issuing information between Issuer and NACCS.

Exchange certificate information between exporter and importer.

Reorganization

Business Sharing

Administrative procedures	Logistic/Networking business
<ul style="list-style-type: none"> • <i>ruling</i> • <i>process flows</i> 	<ul style="list-style-type: none"> • <i>survey</i> • <i>coordination among parties related</i> • <i>business flows</i>
<ul style="list-style-type: none"> • <i>develop concept</i> 	
<ul style="list-style-type: none"> • <i>develop detail specifications</i> 	
<ul style="list-style-type: none"> • <i>procurement</i> 	
<ul style="list-style-type: none"> • <i>system development</i> 	
<ul style="list-style-type: none"> • <i>system operation</i> 	
<ul style="list-style-type: none"> • <i>examination / inspection</i> • <i>approval / permission</i> • <i>risk analysis</i> 	<ul style="list-style-type: none"> • <i>declaration</i> • <i>handling</i>

New Entity

New Entity & vender

Private

New Entity & Private

Government

Reorganization

Improve user productivities and reduce cost would enhance international trade competitiveness.

Current

Established as Government-chartered corporation in October, 1977.

Reformed as incorporated administrative agency in October, 2003.

Employee 115 (end of 2007)

Capita 90 million yen

Share holders government 66.7%, private companies 33.3%

Revenue 10.2 billion yen (FY of 2006)

Business customs procedures and procedure related logistics business

Control government approves midterm plan

Deming Cycle establish objectives in midterm plan



Cost Reduction, better usability and utility

Future

Capita 1 billion yen

Reorganization establish as stock company on October 1, 2008.

Share holders government more than 50%

Business customs and PGA procedures, procedure related logistic business and *other logistic related business*

Control *maintain stable and consistent processing and keep highly secured data management*

Deming cycle to be discussed in establishment committee

Thanks.

Questions ...

yoshikazu.sakai@mof.go.jp

