

附件三：瑞典 El-Kresten 簡報及 El-Kresten 2006 年報



96.9.10



## El-Kretsen AB

- A company set up by producers to help the producers to fulfill their obligations to take back WEEE
- In operation since 1 July 2001
- Manages a nation-wide take back system
- Manage all kinds of EEE in one company
- 1 100 affiliated manufacturers and importers
- Covers 90-95 % of EEE sold in Sweden
- 150 000 tons WEEE collected and recycled in 2006, i.e. 16 kg per inhabitant



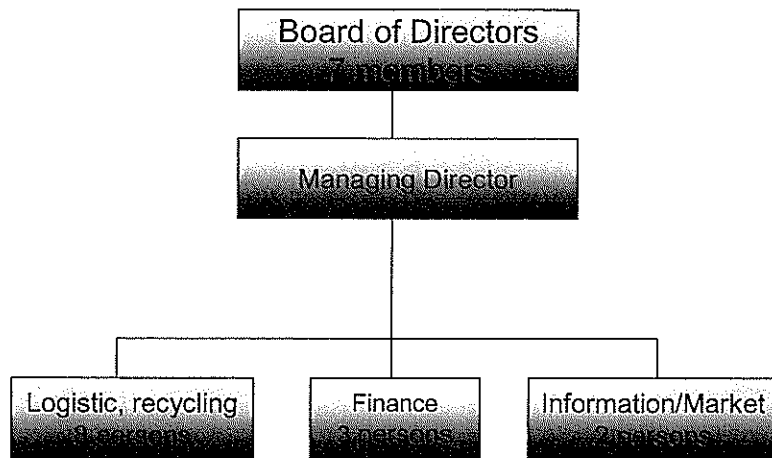
## Financing El-Kretsen AB

- Limited company owned by 21 trade associations
- Staff: 14 persons employed
- Turnover € 38 million
- Small start up-capital €10 000
- Non for profit company, i.e. incomes = costs
- Cost structure
  - Treatment 65 %
  - Collection and transport 30 %
  - Administration and information 5 %





## El-Kretsen's office organisation



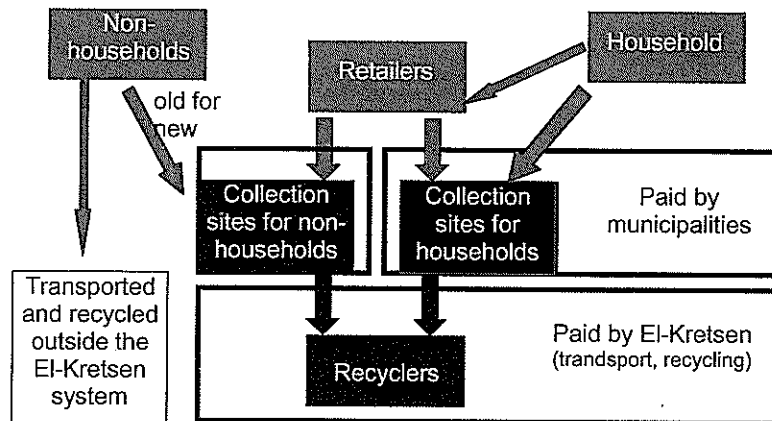
## What is included?

- Large household appliances, (~~excl~~: refrigerators, freezers)
- Small household appliances (~~excl~~ coffee makers, blenders, watches)
- IT and telecommunication equipment
- Consumer equipment (~~excl~~ TV, video, cameras)
- Light sources and fittings for light
- Electrical and electronic tools
- Toys leisure and sports equipment
- Medical devices
- Monitoring and control instruments
- Automatic dispensers





## The EI-Kretsen system – an overview



## The collection system

- Approx. 950 collection sites. Mostly run by municipalities  
(At least one collection-site per municipality)
  - 700 open for households
  - 350 open for non-households
- Municipalities run additional local systems for households
  - Kerb side, call systems, in-house, etc
- Additional collection systems for large businesses, industries, hospitals and some retailers





## Collection

- Responsibility shared by municipalities and producers, but one collection system
- Voluntary agreement between all 290 municipalities and EI-Kretsen
- Based on division of responsibilities
- Municipalities
  - Local collection and information
  - Financed by municipal waste taxes
- Producers
  - All transport and treatment
  - Financed by fees on new products



## The collection system – co-operation benefits all

- Built on the existing waste management infrastructure
- Municipalities: can co-ordinate with other waste streams
- Producers:
  - get access to a well-established nationwide collection system
  - economies of scale; large quantities
- Consumers: easy, one system for all WEEE





## Transport and treatment

- All transport and treatment services bought
- Procurement; maintain competition important
- El-Kretsen uses separate service providers for transport and treatment
- Logistic; all goods sorted in 3 fractions
  - Large white goods 大家具、家电
  - Small/medium sized products (TV, radio, ICT, cell phone, small household appliances, tools, toys)
  - Lighting equipment
- All dismantlers are ISO-certified

70-75 %  
Land fill



