

TRANSIENTS PERFORMANCE TEST RECORD  
OF  
DIESEL GENERATOR SET

**KOHLER**<sup>®</sup>  
POWER SYSTEMS  
— *Asia Pacific*

MODEL No : 2800REOZD

WORK ORDER : S013088

(附件四)

1/5

*E. J. ...*



CH2 : 80.00 Hz  
CH3 : 500.0 V

2/5

CH2 : Range 10V  
CH3 : Range 5V

START  
↓

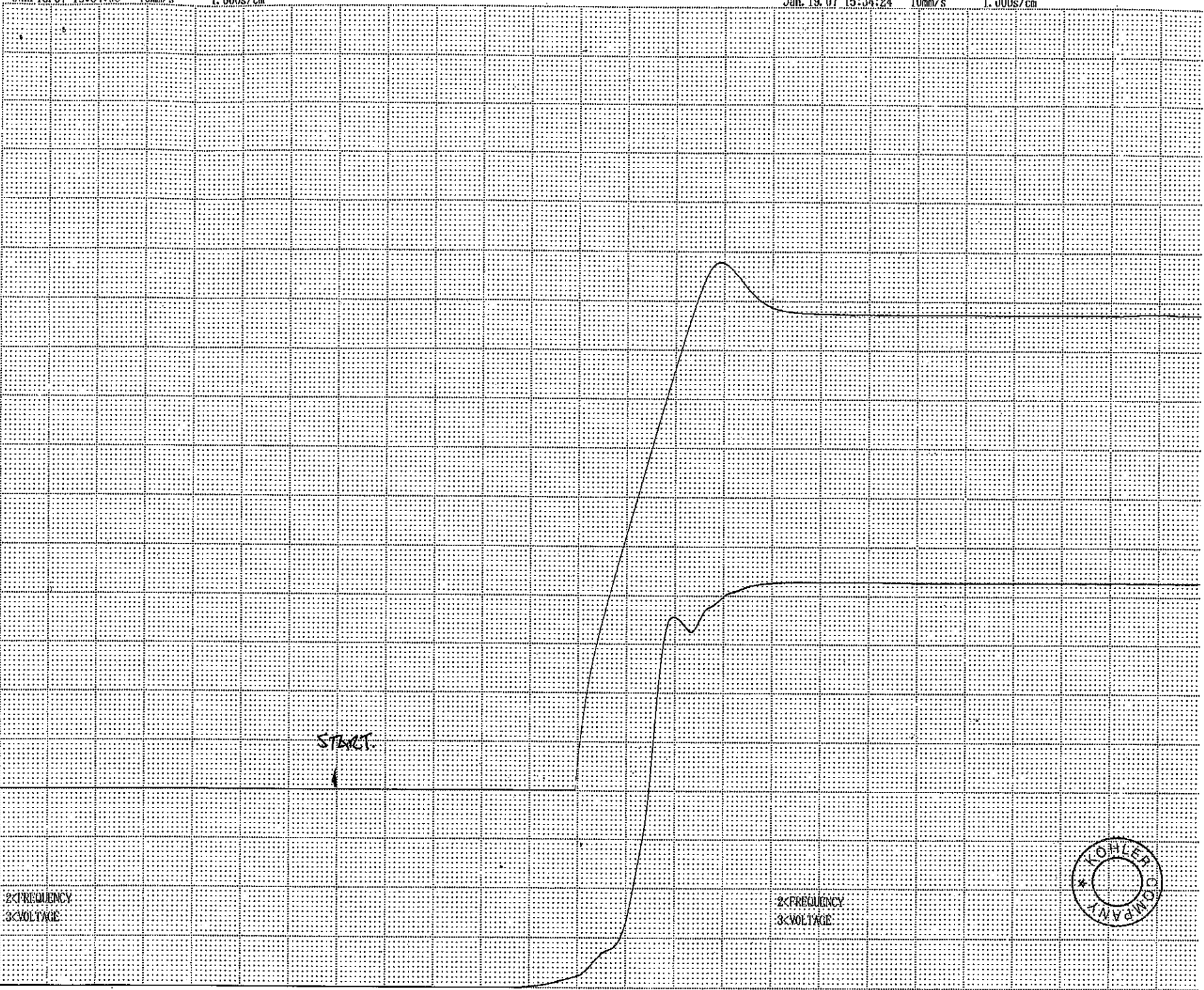
ENGINE  
START

2<FREQUENCY  
3<VOLTAGE

2<FREQUENCY  
3<VOLTAGE



CH2 : 17.50 Hz  
CH3 : 0.000 V





CH2 : 80.00 HZ  
CH3 : 500.0 VOLT

3/5

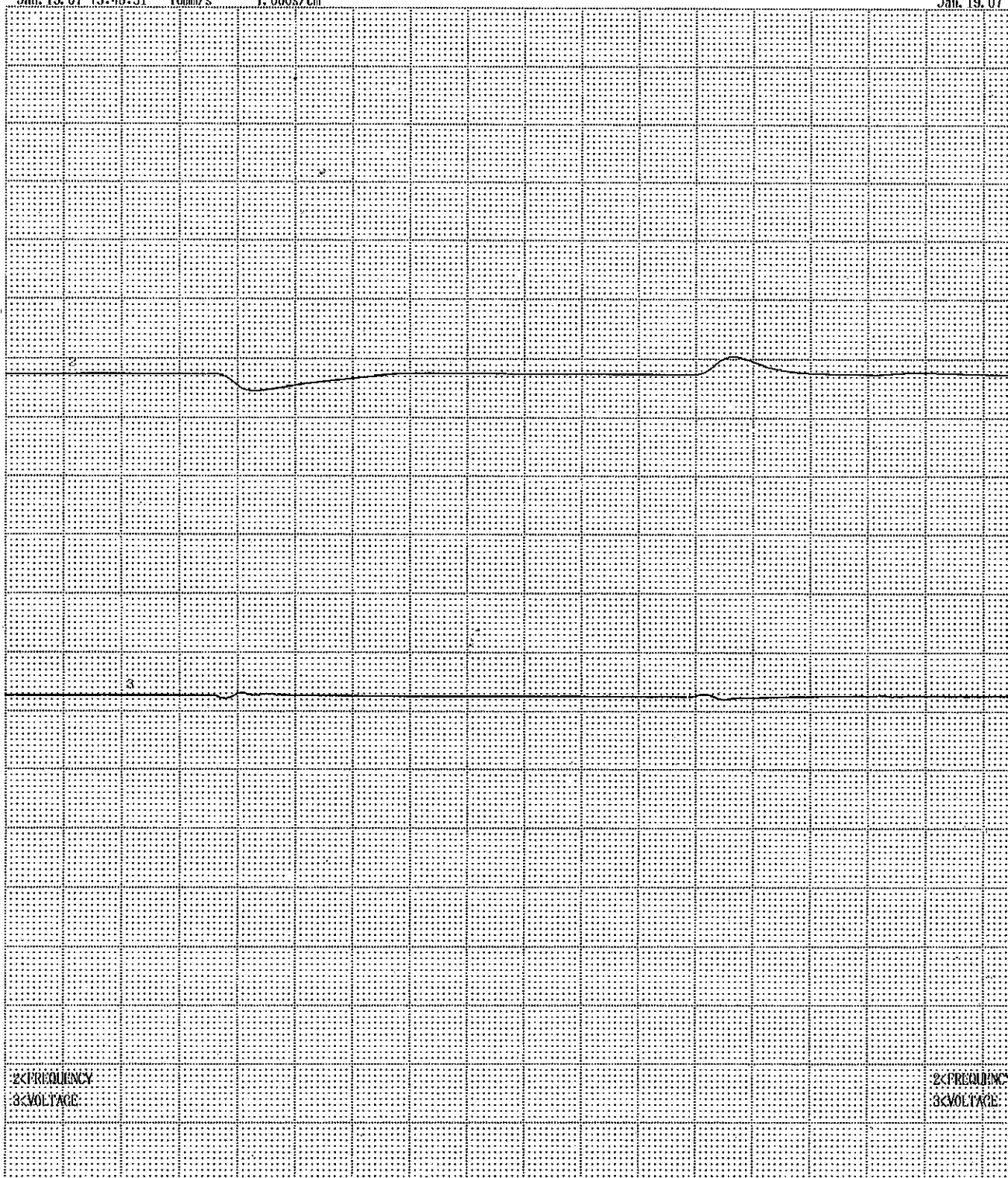
CH2 : Range 10V  
CH3 : Range 5V



100 - 0%  
Load.

2<F>FREQUENCY  
3<V>VOLTAGE

CH2 : 17.50 HZ  
CH3 : 0.000 VOLT



CH2 : 80.00 HZ  
CH3 : 500.0 VOLT

4/5

CH2 : Range 10V  
CH3 : Range 5V



0-25.6

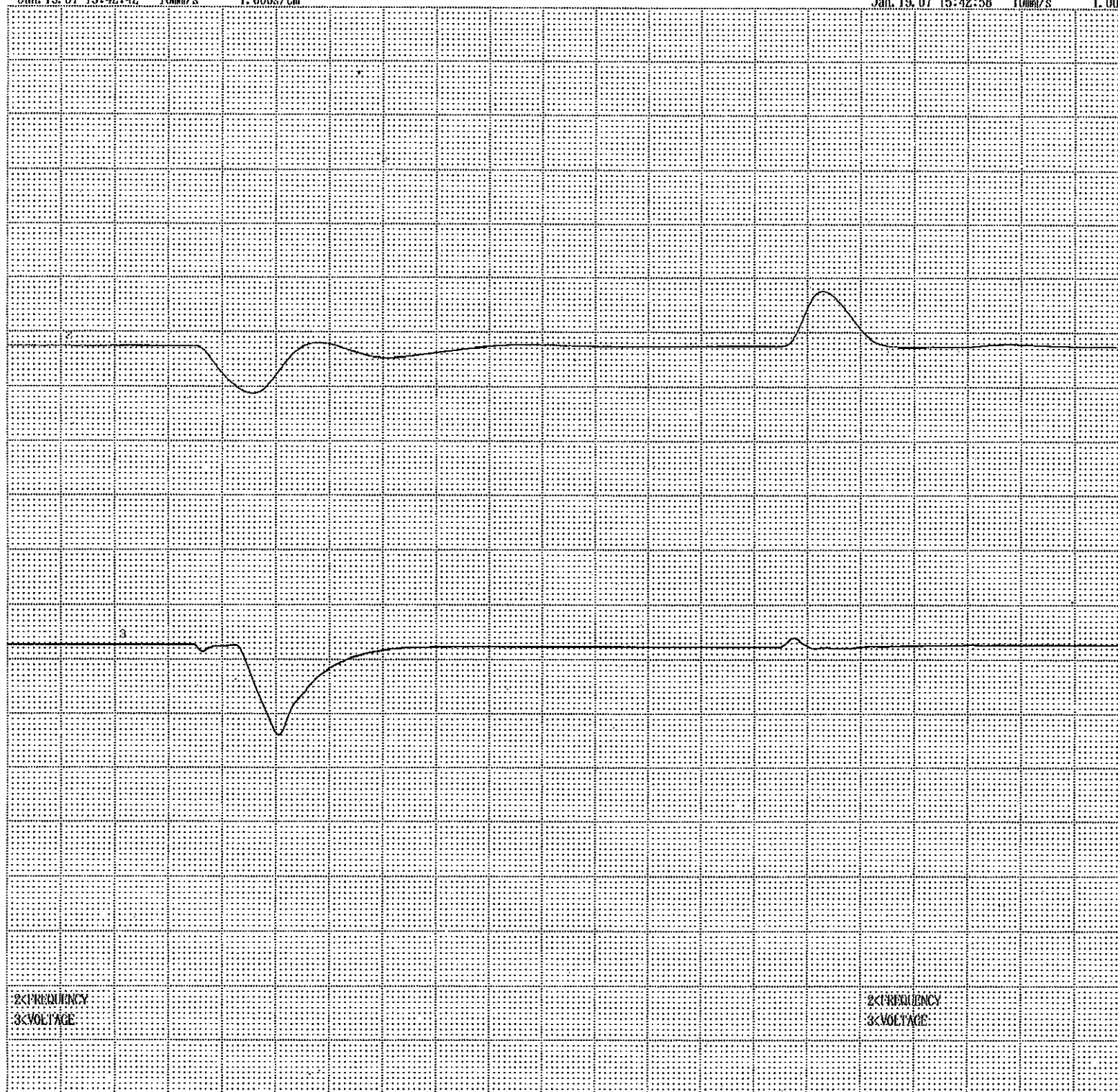
2X FREQUENCY  
3X VOLTAGE

2X FREQUENCY  
3X VOLTAGE

CH2 : 17.50 HZ  
CH3 : 0.000 VOLT

CH2 : 80.00 HZ  
CH3 : 500.0 VOLT

5/5



CH2 : Range 10V  
CH3 : Range 5V



0-55%

2<FREQUENCY  
3<VOLTAGE

2<FREQUENCY  
3<VOLTAGE

CH2 : 17.50 HZ  
CH3 : 0.000 VOLT

5/5