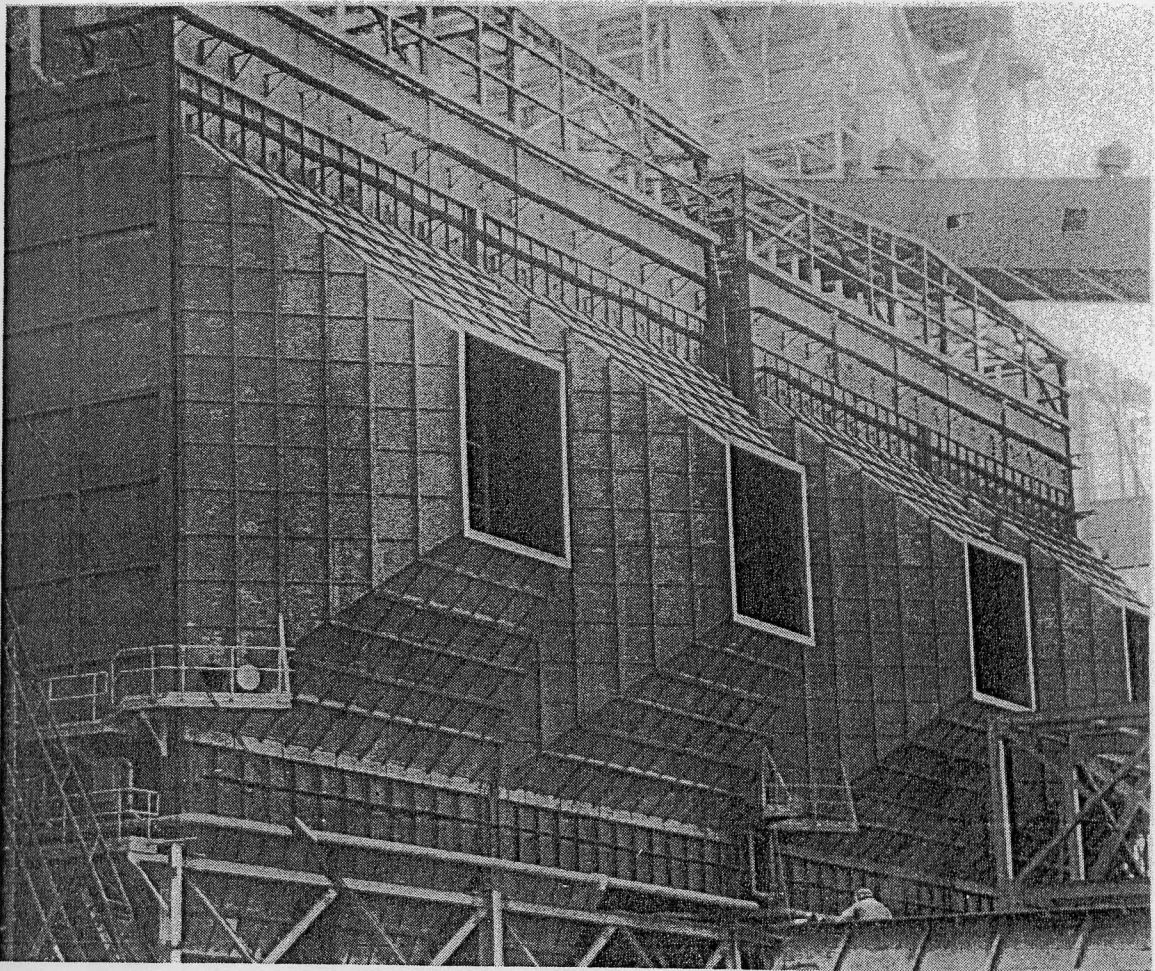
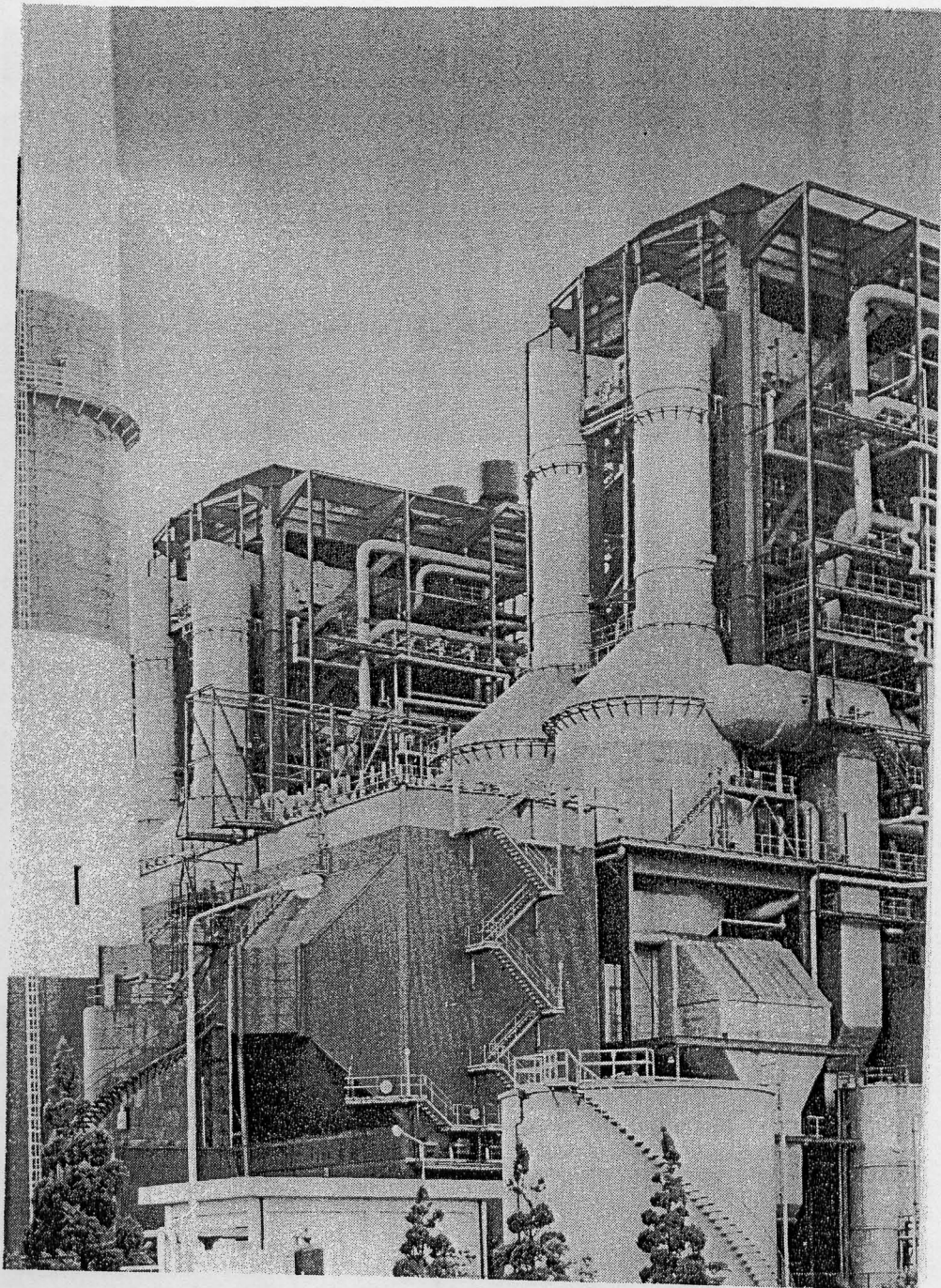


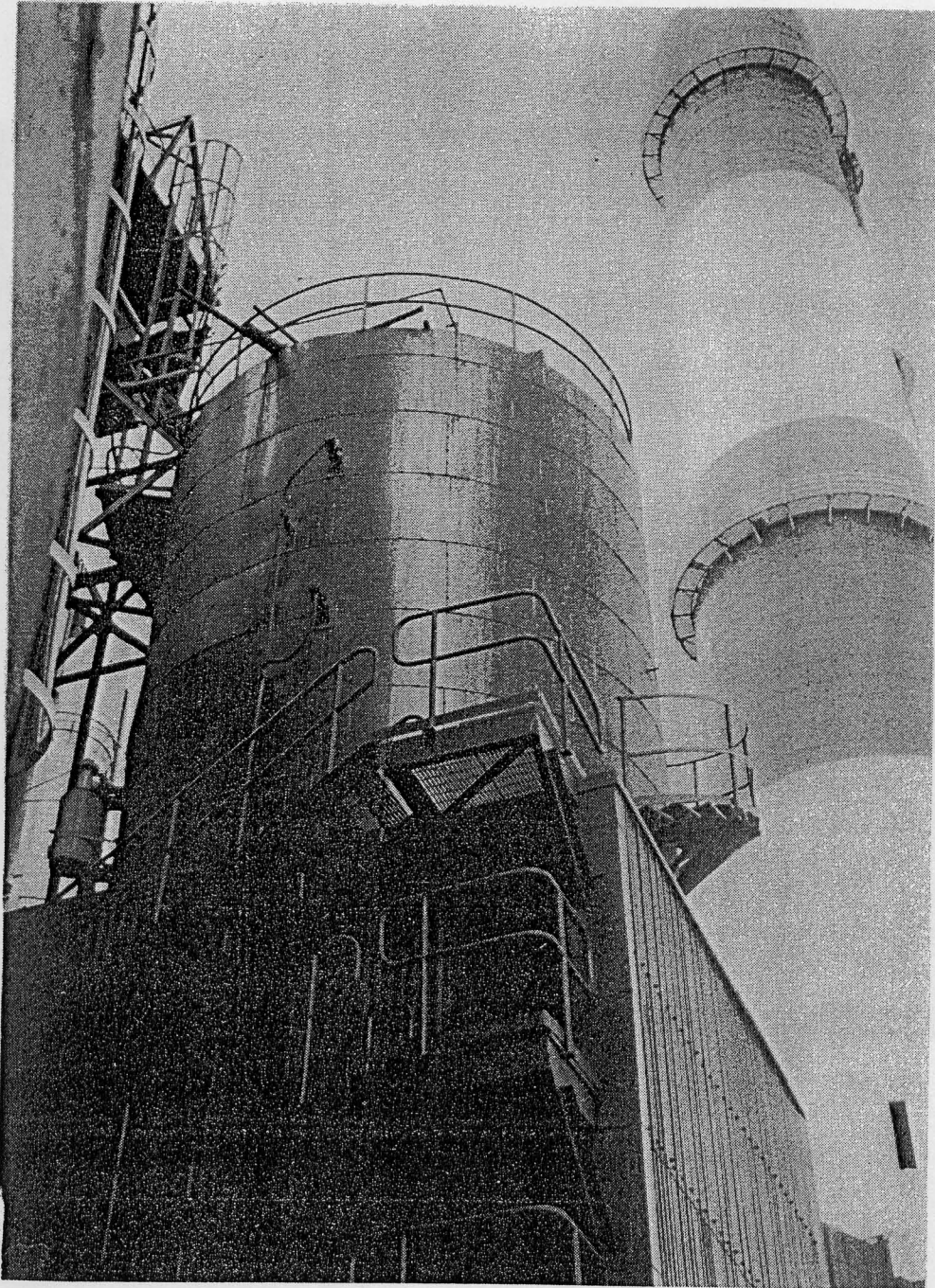
Poryong Thermal Power Station No. 3 & 4 ESP, Korea Electric Power Corp.



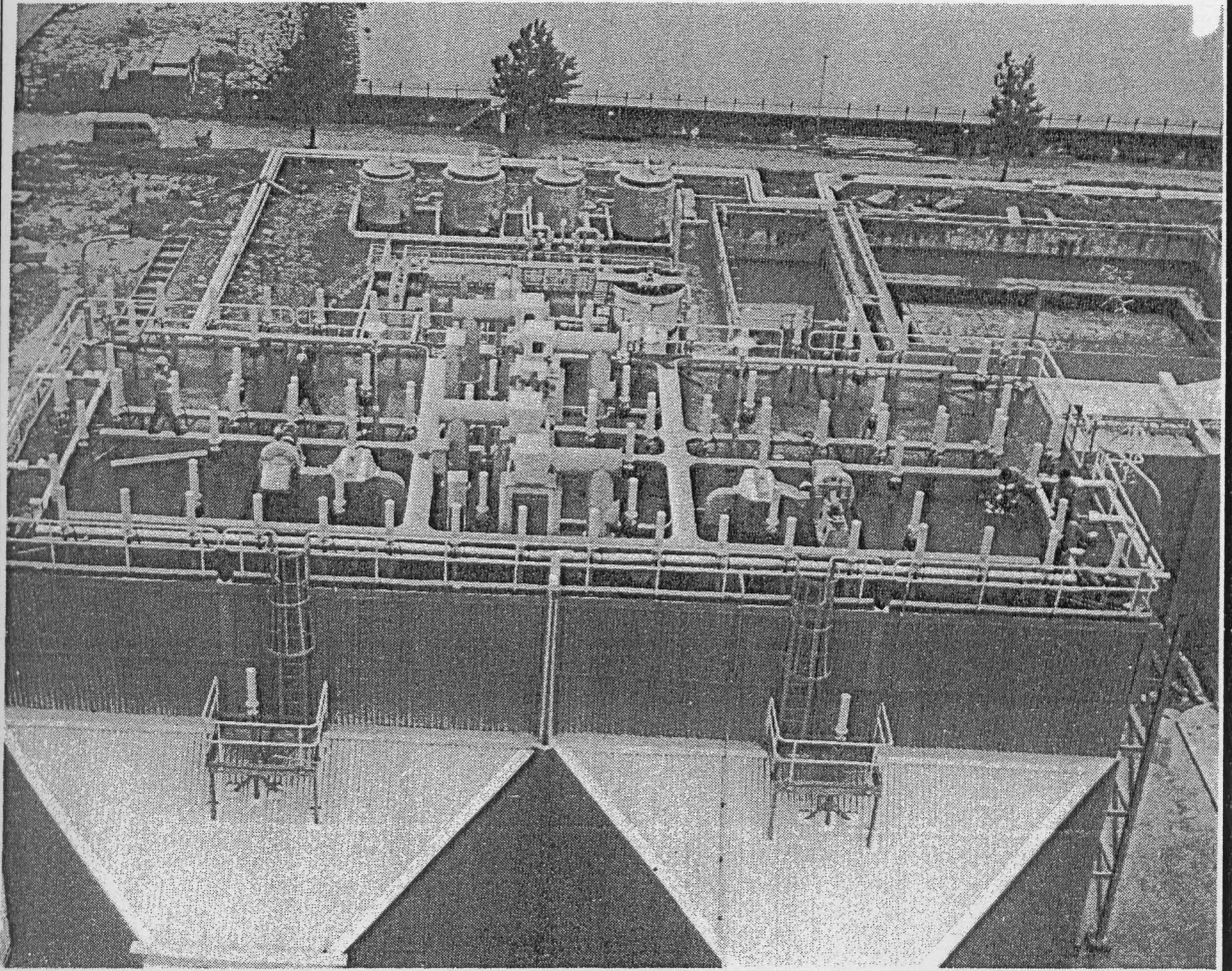
Poryong Thermal Power Station No. 5 & 6 ESP, Korea Electric Power Corp.



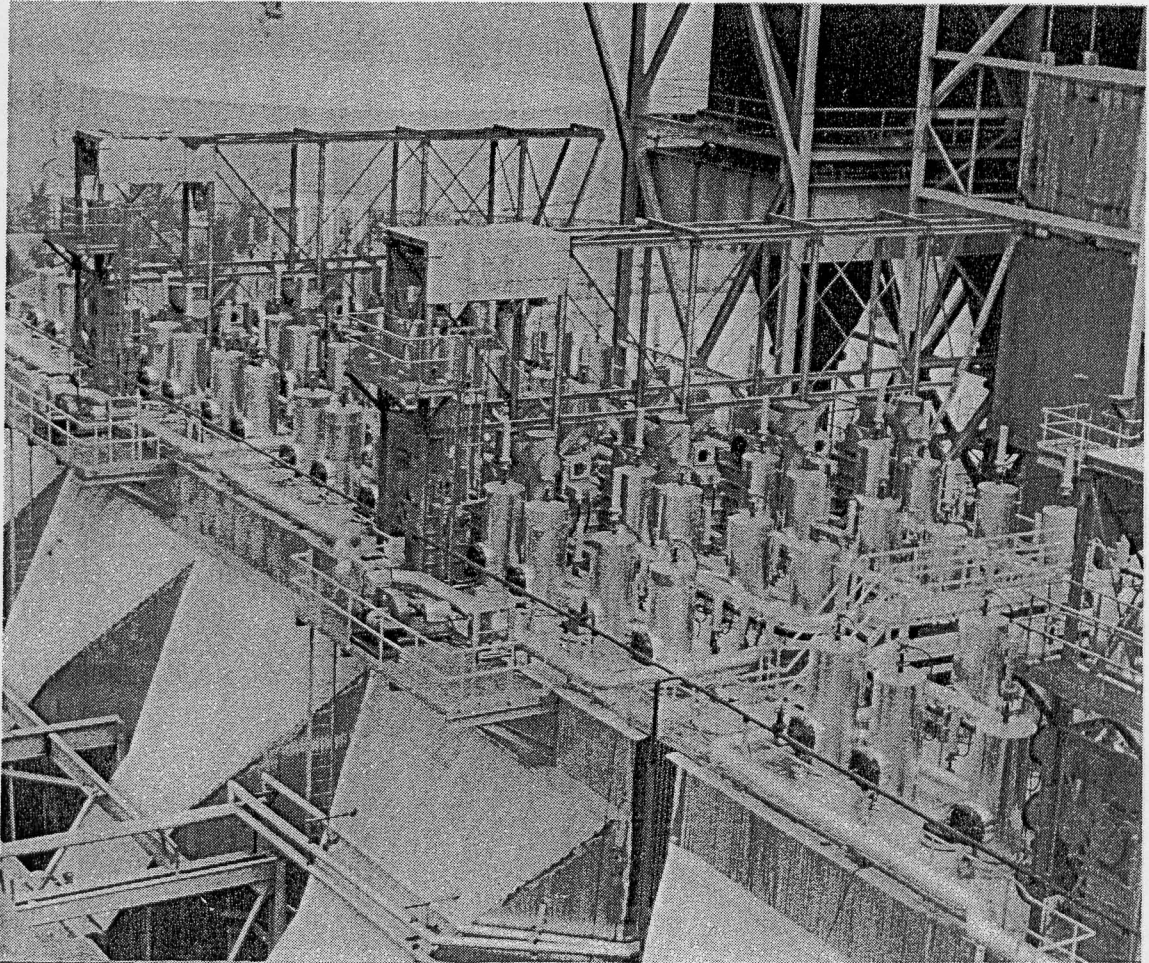
Ulsan Thermal Power Station No. 4, 5 & 6 ESP, Korea Electric Power Corp.



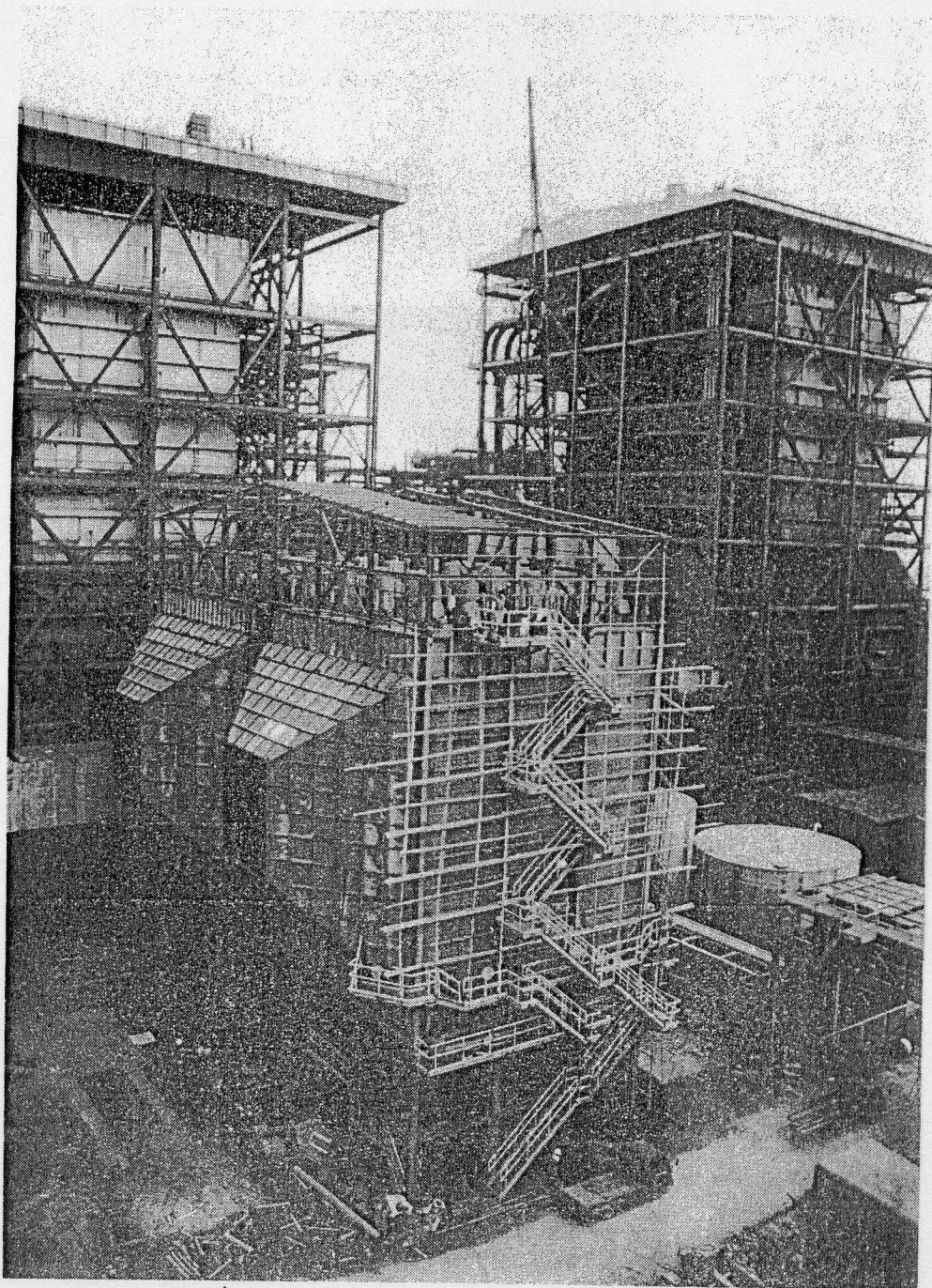
Ulsan Thermal Power Station No. 4, 5 & 6 Ash Silo, Korea Electric Power Corp.



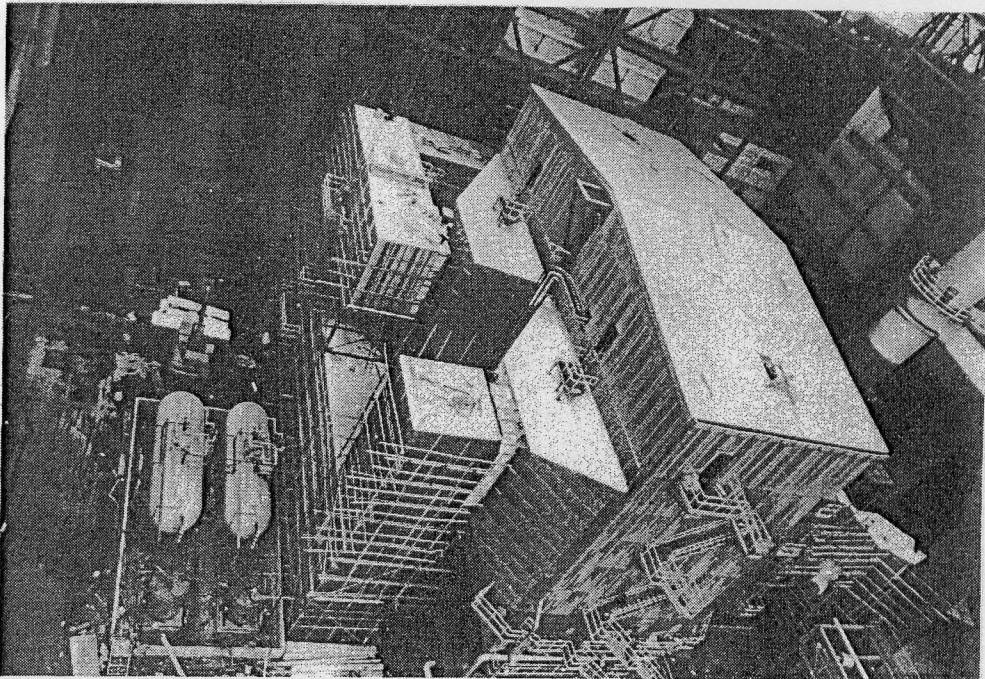
Yosu Thermal Power Station No. 1 & 2 ESP, Korea Electric Power Corp.



Hsinta Steam Power Station No. 1 & 2 ESP, Taiwan Power Company.



Talin Steam Power Station No. 3 & 4 ESP, Taiwan Power Company.



Talin Steam Power Station Ammonia Injection System for No. 3 & 4 ESP. Taiwan Power Company.