

附錄三：第 13 屆國際東洋醫學學術大會
大會大會手冊



OS221-5 17:15~17:30

The Effects of Acupuncture on the Female Sterility Related Treatment

Hung-Chien Wu / China Medical Univ., Taiwan

OS221-6 17:30~17:45

A study of The Guidelines for Investigation and Management of Uterine Myomas with Korean Eastern Medicine Therapies in Korea

Tae-Kyun Lee / Lee Tae-kyun Korean Eastern Medicine Clinic, Korea

OS221-7 17:45~18:00

Homeopathy and Oriental Medicine

Marcel Coste / Traditional Chinese Medicine Diploma, Homeopathy, French

Q&A18:00~18:05

OS23A
Medical History / Hyungsang Medicine / etc.
(Oct.23, 10:00~12:00 Convention Hall 1(5Fl.))

< Chairpersons >

Jung-Hoon Cho / Dept. of Oriental Gynecology, College of Oriental Medicine, Kyung Hee Univ., Korea

Liang Liu / Hong Kong Baptist University, China

OS23A-1 10:00~10:25

The Analysis of Patients in the Kampo Clinic and An Examination of the Reasons for Discontinuance of Kampo Medicines

Sung-Joon Kim / The Kitasato Institute, Korea

OS23A-2 10:25~10:50

Newer Approaches to Oriental Medicine

Edwin Cooper / Dept of Neurobiology Laboratory of Comparative Neuro immunology, David Geffen School of Medicine at UCLA, United States

OS23A-3 10:50~11:05

The relaxing effect of SLED on a person with a short-term mental stress, analyzed by the changes of Heart Rate Variability

Jung-Hoon Cho / Dept. of Oriental Gynecology, College of Oriental Medicine, Kyung Hee Univ., Korea

OS23A-4 11:05~11:20

Interaction of paeoniflorin and sinomenine in pharmacokinetics and the underlying mechanisms

Liang Liu / Hong Kong Baptist Univ., China

OS23A-5 11:20~11:35

About the description of "protracted taking" (Kyufuku久服) in the "Shen Nong Ben Cao Jing (Shennong Herbal)" (Shinnohonzo神農本草經) by Tatuyuki Mori

Shigeyo Nakamura / The Japan Kampo Medicine Association(JKMA), Japan

OS23A-6 11:35~11:50

The Study on the 'Hyung-Sang' Theory of Acupuncture Points in Each Chapter on 'Jung', 'Ki', 'Shin' and 'Hyul' in Dong-Eui-Bo-Gam

Yong-Whan Park / Department of Diagnostics, Research Institute of Oriental Medicine, College of Oriental Medicine, Dongeui University

Q&A11:50~12:00

OS23B
Eye / ENT / Skin disease
(Oct.23, 10:00~12:00 Convention Hall 2 (5Fl.))

< Chairpersons >

In-Hwa Choi / College of Oriental Medicine, Dongguk Univ., Korea

Elizabeth Ohm / Kyung San University U.S.A, United States

OS23B-1 10:00~10:25

A Clinical Study on the Prevalence of Skin Diseases in Adult Patients

In-Hwa Choi / College of Oriental Medicine, Dongguk Univ., Korea

OS23B-2 10:25~10:50

Traditional Oriental Medicine in the treatment of acne vulgaris

Emil Iliev / Department of Dermatology and Venereology, Faculty of Medicine, Bulgaria

OS23B-3 10:50~11:05

The Use of Acupuncture in complex Therapy of Burn trauma

Jitka Loskotova / Masaryk Univ., Czech Republic



OS23B-4 11:05~11:20

A Successful Treatment for Scleroderma by Kampo; A Case Report

Hideya Isai / Niikappu-cho, National Health Insurance Hospital, Japan

OS23B-5 11:20~11:35

Correlative Meridian Therapy - A Novel Neuromeridian Therapy 2005

Chung-Shin Hwang / Schweitzer Medical Research Institute, Taipei, Taiwan

OS23B-6 11:35~11:50

Clinical application of ling Gui Ba pa and replacment of Jui Gong Greatly affect in chronic difficult disease

Elizabeth Ohm / Kyung San Univ., United States

Q&A11:50~12:00

OS23C

Diagnosis

(Oct.23, 10:00~12:00 Exhibition Hall 3 (3Fl.))

< Chairpersons >

Cheng-Yuan Lai / Guangzhou Chinese Medical University, Taiwan

Seung-Ho Yi / KyungHee University, East-West Medical Research Institute, Korea

OS23C -1 10:00~10:30

Pain and acupuncture - a physiological perspective

Thomas Lundberg / Karolinska Institute, Sweden

OS23C -2 10:30~10:55

The Relationship between Meridian Sp16 and Mercury

Cheng-Yuan Lai / Guangzhou Chinese Medical Univ., Taiwan

OS23C -3 10:55~11:20

Infrared diagnostics in asupunture-new results

Walburg Maric-Oehler / DAGFA, Germany

OS23C -4 11:20~11:35

Study of seasonal biophoton emission from human hands

Seung-Ho Yi / KyungHee Univ., East-West Medical Research Institute, Korea

OS23C-5 11:35~11:50

A Study on the Pulse Diagnosis of the Floating and Sinking pulse with New Developed Pulse Analyzer

Si-Woo Lee / Department of Medical Research, Korea Institute of Oriental Medicine, Korea

OS23C -6 11:50~12:05

A Clinical study on the correlation between the pancreatic pathological constitution and the Diabetes Mellitus By Iris Diagnosis.

Sung-li Park / Dr.Park's Oriental Medical Clinic, Korea

Q&A12:05~12:15

Poster Session

(Oct.21, 13:30~18:00, Oct.22, 10:00~18:00(3Fl.))

PS21-1 Oct. 21st, 15:30~16:00

Toxicity Studies on Karpura Shilajit Bhasma, an Ayurvedic Diuretic Drug

Mohamed Saleem Abdul Shukkoor / C. L. Baid Metha College of Pharmacy, India

PS21-2 Oct. 21st, 15:30~16:00

Chemical and Pharmacological Evaluation of Karpura Shilajit Bhasma, an Ayurvedic Diuretic Formulation

Mohamed Saleem Abdul Shukkoor / C.L.Baid Metha College of Pharmacy, India

PS21-3 Oct. 21st, 15:30~16:00

Survey of Satisfaction about Oriental Medical Survice for old men in Seo-Cho Gu

Chi-Kwon Ahn / Conmaul Oriental Hospital Seoul Korea, Korea

PS21-4 Oct. 21st, 15:30~16:00

Effects of fermented Rhynchosia Molubilis on the Osteoporosis and Global Cerebral Ischemia

DukKyun Ahn / Jaseng Research Institute, Korea

PS21-5 Oct. 21st, 15:30~16:00

Effects of fermented Rhynchosia Molubilis on Oriental Medical Therapy for Anti-Cancer Therapy Complications - Usefulness of Nourishing Kidney-Qi

Akimune Hayashi / Kanagawa Cancer Center, Japan



- PS21-6 Oct. 21st, 15:30~16:00
Improve your immunity and prevent ageing process by oriental medicine
Ashok kumar Jain Jain / s.v.s.marwari hospital and research centre,kolkata,india
- PS21-8 Oct. 21st, 15:30~16:00
Effects of KHBj024 on Apoptosis, Proteoglycan Degradation, and Matrix Metalloproteinase Expression in Rabbit Articular Cartilage
Yong-Hyeon Baek / College of Oriental Medicine, Kyung Hee Univ., Korea
- PS21-9 Oct. 21st, 15:30~16:00
Cytoprotective effect of Licorice water extract against Arsenite-induced cytotoxicity
Sung-Hui Byun / College of Oriental Medicine, Daegu Hanny Univ., Korea
- PS21-10 Oct. 21st, 15:30~16:00
Protective effects of Glycyrrhizae radix extract and liquiritigenin against cadmium-induced cytotoxicity
Sung-Hui Byun / College of Oriental Medicine, Daegu Hanny Univ., Korea
- PS21-11 Oct. 21st, 15:30~16:00
Treatment of Rat Experimental Adjuvant-induced Arthritis with QFGJS, a Preparation of an Anti-arthritic Herbal Formula from Chinese Medicine
Xiong Cai / Hong Kong Baptist Univ., China
- PS21-13 Oct. 21st, 15:30~16:00
Studies on Adulteration and Misusage of Lycopi in Marketing
Hsien-Chang Chang / Bureau of Food and Drug Analysis, Department of Health, Taiwan
- PS21-14 Oct. 21st, 15:30~16:00
Lipid Peroxidative Inhibitor Development from 30 Flavones by 3D Quantitative Structure - Activity Relationship against Rat liver Mitochondria
Yeong-Sheng Chang / Tamkang Univ., Taiwan
- PS21-15 Oct. 21st, 15:30~16:00
Ninety Kinds of Natural Products against Lipid Peroxidation on Mice and Rat Liver Tissue
Hui-Fang Chang / Graduate Institute of Biopharmacutics, College of Life Sciences, National Chiayi Univ., Taiwan
- PS21-16 Oct. 21st, 15:30~16:00
Inhibitory Effects of Herbal Medicines on Melanin Biosynthesis
Wei-Ling Chang / School of Pharmacy, Taipei Medical Univ., Taiwan
- PS21-18 Oct. 21st, 15:30~16:00
Antioxidative Polyphenols and Chromatographic Fingerprint of Gnaphalium affine D. Don
Lih-Geeng Chen / Graduate Institute of Biopharmaceutics, College of Life Sciences, National Chiayi Univ., Taiwan
- PS21-19 Oct. 21st, 15:30~16:00
A Study on Interpretative Basis of Brain as a Place of Mental Function in Oriental Medicine
Gyoo-Yong Chi / College of Oriental Medicine, Donggeui Univ., Korea
- PS21-20 Oct. 21st, 15:30~16:00
Acupuncture Enhanced Cell Proliferation in Dexamethasone Induced Hippocampal Damage of Neonatal Rat
Chi-Hsien Chien / Department of Anatomy, College of Medicine, National Cheng-Kung Univ., Taiwan
- PS21-21 Oct. 21st, 15:30~16:00
Anti-inflammatory Effects of Zingiber zerumbet Smith in LPS stimulated RAW 264.7 cells and on Carrageenan-induced Paw Edema Mice
Ting-Yi Chien / School of Pharmacy, Taipei Medical Univ., Taiwan
- PS21-22 Oct. 21st, 15:30~16:00
Studying the Effects of Nine Medicinal Plants on RANTES Secretion by Influenza A Virus - Infected Human Bronchial Epithelial Cells
Wen-Fei Chiou / National Research Institute of Chinese Medicine, Taiwan
- PS21-23 Oct. 21st, 15:30~16:00
A Study of Personality Traits in So-yang, So-eum and Tae-eum using NEO-PI-R
Chang-Hyun Cho / Department of Internal Medicine, College of Oriental Medicine, Wonkwang Univ., Korea



- PS21-24 Oct. 21st, 15:30~16:00
Effects of KHBj 004 on Proteoglycan Release and Type II Collagen Degradation in Human Articular Cartilage Explants
Eun-Mi Cho / Oriental Medicine Research Center for Bone & Joint Disease, Korea
- PS21-25 Oct. 21st, 15:30~16:00
Evaluation of Tumor Necrosis Factor-Alpha Gene Polymorphism (TNF- α 308) in the Post Stroke Pain Patients
Do-Young Choi / Research Group of pain and Neuroscienc in Vision 2000 Project, east-West Medical Research institute, kyung Hee Oniversity.
- PS21-26 Oct. 21st, 15:30~16:00
Anti-rheumatoidal effects of Uncaria Tomentosa and Maytenus by a prolonged application
In-Sook Choi / Suzuka Univ. of Medical Science, Japan
- PS21-27 Oct. 21st, 15:30~16:00
Inhibitory effect of Isatidis Radix water extract on TNF- α , IL-1 β and Nitric Oxide production in lipopolysaccharide -activated RAW 264.7 cells
Kyung-Im Choi / Dept. of Beauty Coordination, Daegu Health College, Korea
- PS21-28 Oct. 21st, 15:30~16:00
The antibacterial activity of Cacumen Platycladi Orientalis against drug-resistant Staphylococci
Mei-Shu Chuang / School of Pharmacy, Taipei Medical Univ., Taiwan
- PS21-29 Oct. 21st, 15:30~16:00
Effects of Gamisinsunbulodan on Learning and Memory
Hyun-Sup Eom / College of Oriental Medicine, Dongeui Univ., Korea
- PS21-30 Oct. 21st, 15:30~16:00
Effects of two formulations for overcoming oketsu on vascular function and expression patterns of plasma proteins in spontaneously diabetic rats.
Hirozo Goto / Toyama Medical and Pharmaceutical Univ., Japan
- PS21-31 Oct. 21st, 15:30~16:00
AntioxiAntioxidant activity and anti-tumor immunity by Propolis in micedant activity and anti-tumor immunity by Propolis in mice
yeun-Hwa Gu / Suzuka Univ. of Medical Science, Japan
- PS21-32 Oct. 21st, 15:30~16:00
Enhancement of immuoctivity and radioprotection effect by Lyophyllum decastes sing and Propolis in mice
Yeun-Hwa Gu / Suzuka Univ. of Medical Science, Japan
- PS21-33 Oct. 21st, 15:30~16:00
Radioprotection effect and anti-tumor immunity by Fuscoporia oblique
Yeun-Hwa Gu / Suzuka Univ. of Medical Science, Japan
- PS21-34 Oct. 21st, 15:30~16:00
Anti-Alzheimer effect by K. Lysolecitin administration
Yeun-Hwa Gu / Suzuka Univ. Med. Sci., Japan
- PS21-35 Oct. 21st, 15:30~16:00
The anti-inflammatory activities of nephrite
Dong-Oh Han / Graduate School of East-West Medical Science, Kyung Hee Univ., Korea
- PS21-36 Oct. 21st, 15:30~16:00
The Enhancement of Immunological Activity and Effects by Mild Hyperthermia.
Hasegawa Takeo / Suzuka Univ. of Medical Science, Japan
- PS21-37 Oct. 21st, 15:30~16:00
Enhancement of Drug Uptake and the Chemotherapy by Mild-Hyperthermia.
Hasegawa Takeo / Suzuka Univ. of Medical Science, Japan
- PS21-38 Oct. 21st, 15:30~16:00
Comparative effects of Keishibukuryogan and Tokisyakuyakusan on membrane visco-elasticity and free radical-induced lysis of Red blood cells.
Hiroaki Hikiami / Toyama Medical and Pharmaceutical Univ., Japan



PS21-39 Oct. 21st, 15:30~16:00

Relation between fingernail lunula and body temperature

Yung-Taek Hong / Association of Korean Oriental Medicine Chairman of Korean Society of Atopic dermatitis, Korea

PS21-40 Oct. 21st, 15:30~16:00

Thirteen years' clinical activity on acupuncture in a national college clinic in Japan

Noriko Hori / Tsukuba College of Technology Clinic, Japan

PS21-41 Oct. 21st, 15:30~16:00

Tyrosinase Inhibitor Isolated from the Leaves of Psychoria Rubra

Hui-Ling Hsiao / Tamkang Univ., Taiwan

PS21-42 Oct. 21st, 15:30~16:00

The Attenuating Effects of Luteolin on Amyloid β -Peptide -Induce Amnesia in Rats and Molecular Mechanism in Neuron Apoptosis

Ming-Tsuen Hsieh / China Medical Univ., Taiwan

PS21-43 Oct. 21st, 15:30~16:00

The Voice Analysis on Phlegm Syndrome in Traditional Chinese Medicine-a Study of Rhinosinusitis Patients

Ko-Hsin Hu / Department of Otorhinolaryngology, Head and Neck surgery, Tao-Yuan General Hospital, Department of Health, Taoyuan, Taiwan

PS21-44 Oct. 21st, 15:30~16:00

Evaluation of hepatoprotective activity of Taiwan endemic plants-Camellia oleifera Abel.

Yu-Chun Huang / College of Pharmacy, Taipei Medical Univ., Taipei, Taiwan

PS21-45 Oct. 21st, 15:30~16:00

Effects of KHB040 on angiogenesis in vitro and in vivo

Jeong-Eun Huh / Oriental Medical Research Center for Bone&Joint Disease Kyung Hee Univ., Korea

PS21-46 Oct. 21st, 15:30~16:00

Clinical Research on 3 Cases of Bo-Ryu Enema among Detoxification Therapy effects on Liver Function Test

Hae-Jin Jang / Conmaul Oriental Hospital, Korea

PS21-47 Oct. 21st, 15:30~16:00

A Clinical Study on the Effects of Sunchi-joeng(仙痔釘) on Extermination of Hemorrhoid and of Guchi-go(救痔膏) on the Treatment of the Scars Remained after Extermination of Hemorrhoid

Se-Whan Jang / Dong-Bo Oriental Medicine Hospital, Korea

PS21-48 Oct. 21st, 15:30~16:00

Inhibition of KHM038 on LPS-induced Nitric Oxide, Prostaglandin E2 production from Murine Macrophage RAW 264.7 Cells

Mi-Young Jeong / East-West Medical Research Institute, Kyung Hee Univ., Korea

PS21-49 Oct. 21st, 15:30~16:00

Community Welfare and Oriental Medicine for the Aged People

Yun-Sun Jung / J & R Oriental Medical Clinic, Korea

PS21-50 Oct. 21st, 15:30~16:00

The clinical effects of oriental medicine therapy in acne Conglobate

Ho-Long Jung / Dep't of Dermatology, Ye Oriental Medical Clinic, Korea

PS21-51 Oct. 21st, 15:30~16:00

The Effects of Rhodiola sacra Fu(RSF) Extract on the Alzheimer's Disease Model

In-Chul Jung / College of Oriental Medicine, Daejeon Univ., Korea

PS21-52 Oct. 21st, 15:30~16:00

Proficiency in yogic respiration method increases cellular immunity

Tsutomu Kamei / Shimane Inst. Health Sci., Japan

PS21-53 Oct. 21st, 15:30~16:00

Sho-Seiryu-To (Chinese name : Xiao-Zing-Long-Tang) has reducing effects on skin itching and peripheral eosinophil level in elderly patients

Tsutomu Kamei / Shimane Inst. Health Sci., Japan

PS21-54 Oct. 21st, 15:30~16:00

Development of '3-D' Blood Pressure Pulse Diagnosis System by using Intelligent Robot Hand

Hee-Jung Kang / DAEYOMEDI Co., Ltd, Korea



PS21-55 Oct. 21st, 15:30~16:00

Acupuncture protects 1-methyl-4-phenyl-1, 2, 3, 6-tetrahydropyridine (MPTP)-induced dopaminergic neuronal death by inhibited microglia activation in a Mouse Parkinson's disease model.

Jun-Mo Kang / Meridian and Acupuncture, College of Oriental Medicine, Kyung Hee Univ, Korea

PS21-56 Oct. 21st, 15:30~16:00

Study on the identity of Oriental Medicine in South Korea by investigation into the major domestic newspapers' news report tendency on the medical issue.

Yong-Hyeok Kang / Kyung Hee Univ., Korea

PS21-57 Oct. 21st, 15:30~16:00

A Case of Intractable Migraine Successfully Treated with Hachimijogan

Haruyuki Kasuda / International Univ. Health and Welfare, Japan

PS21-58 Oct. 21st, 15:30~16:00

Antioxidation Effects of Chinese Herbal Medicines

Wei-Ming Ke / School of Pharmacy, Taipei Medical Univ., Taiwan

PS21-59 Oct. 21st, 15:30~16:00

Protective effect of Licorice water extract against Cadmium-induced Toxicity in Rats

Young-Woo Kim / College of Oriental Medicine, Daegu Hanny Univ., Korea

PS21-60 Oct. 21st, 15:30~16:00

Effects of Korean Herbal Medicines on Memory Impairment of Mice Induced by Beta-Amyloid(25-35)

Bum-Hoi Kim / College of Oriental Medicine, Kyung Hee Univ., Korea

PS21-61 Oct. 21st, 15:30~16:00

Alcohol Dehydrogenase Inhibition and Biological Activity In vitro of Extracts from Some Medicinal Herbs for Development of Hangover Drink

Chan-Hee Kim / Institute of Oriental Medicine Biotechnology, Neoherb Co., Ltd., Korea

PS21-62 Oct. 21st, 15:30~16:00

Clinical Reports of Non-Erosive Gastroesophageal Reflux Disease

Dae-Joon kim / Dept. of Internal Medicine, Daegu Haany Univ. Korea

PS21-63 Oct. 21st, 15:30~16:00

A Study about the News Searched on DAUM Related to Hormone Replacement Therapy and Analysis of Perimenopausal and Postmenopausal Patients Who Visited Dept. of Ob&Gy Korean Eastern Medicine Hospital since July 2002

Dong-Il Kim / College of Korean Eastern Medicine, Dongguk Univ., Korea

PS21-64 Oct. 21st, 15:30~16:00

A Case Study of Upper Limb Lymphedema after Breast Cancer Surgery

Dong-Il Kim / College of Korean Eastern Medicine, Dongguk Univ., Korea

PS21-65 Oct. 21st, 15:30~16:00

Collagenase Inhibition and Biological activity for a dementia prescription

Hak-Ju Kim / Institute of Han Medicine Biotechnology, Neoherb Co. Ltd., Korea

PS21-66 Oct. 21st, 15:30~16:00

Anti-inflammatory effect of Chungsangboha-tang on THP-1 cells

Hong-Yeoul Kim / Dept. of Biological Sciences of Oriental Medicine, Kyung Hee Univ., Korea

PS21-67 Oct. 21st, 15:30~16:00

Electroacupuncture modulates excitability of the spinal dorsal horn neurons in rats with sprained ankle

Jae-Hyo Kim / College of Oriental Medicine, Wonkwang Univ., Korea

PS21-68 Oct. 21st, 15:30~16:00

Effect of Coptidis Rhizoma on long-term alcohol induced withdrawal syndrome in rats

Ji-Hyun Kim / The Catholic Univ. of Korea, Korea

PS21-69 Oct. 21st, 15:30~16:00

A Clinical Study of Panic attack and Anticipatory anxiety on Panic disorder patients

Jin-Hyung KIM / Wonkwang Univ., Korea



PS21-70 Oct. 21st, 15:30~16:00

The Effect of Dangyosogo on the STZ-induced Type II Diabetes Rat Model

Jong-Dae Kim / College of Oriental Medicine, Daegu Haany Univ., Korea

PS21-71 Oct. 21st, 15:30~16:00

The Effectiveness of Bee Venom Acupuncture Therapy on the Treatment of Sprain of L-spine (A randomized controlled trial; Double blinding)

Kyung-Tae Kim / Department of Acupuncture & Moxibustion, College of Oriental Medicine, Kyung Won Univ., Korea

PS21-72 Oct. 21st, 15:30~16:00

Acupuncture suppresses behavioral hyperactivity and dopamine release in the nucleus accumbens in rats sensitized to morphine

Mi-Ryeo Kim / College of Oriental Medicine, Daegu Haany Univ., Korea

PS21-73 Oct. 21st, 15:30~16:00

Some Clinical Cases and Traditional Medicotherapy : Bodily Stature and Schoolwork's Difficulty Caused by A Phenomenon of Nasal Obstruction of Rhinitis and Empyema

Nam-Sun Kim / YD Nose Allergy Clinic, Korea

PS21-74 Oct. 21st, 15:30~16:00

Enhanced Vasorelaxation of Banhabackchul ChunmaTang-1 and involved mechanism

Sang-Dae Kim / College of Oriental Medicine, Dongguk Univ., Korea

PS21-77 Oct. 21st, 15:30~16:00

Drug Metabolizing Enzyme Cytochrome P450 2D6 Polymorphism Is Associated with Types of Sasang constitutional medicine

Yun-Kyung Kim / Wonkwang Univ., Korea

PS21-78 Oct. 21st, 15:30~16:00

Effect of Electroacupuncture treatment epilepsy rat model by nitric oxide analysis

Yun-Jin Kim / Nanjing Univ of TCM., China

PS21-79 Oct. 21st, 15:30~16:00

Acupuncture for Hypertension: A Systematic Review of Randomized Controlled Trials

Yun-Ju Kim / College of Medicine, Kyung Hee Univ., Korea

PS21-80 Oct. 21st, 15:30~16:00

Correlation between Symptom Relief and Needling -Induced Pain Sensation with Knee Osteoarthritic patients - Preliminary Study

Yun-Ju Kim / College of Oriental Medicine, Kyung Hee Univ., Seoul, South Korea

PS21-81 Oct. 21st, 15:30~16:00

Neuroprotective Effect of Acorni Graminei Rhizomaon Temporal Cerebral Ischemia in Rats

Ja-Seung Ku / Graduate School of East-West Medical Science, Kyung Hee Univ., Korea

PS21-82 Oct. 21st, 15:30~16:00

Study on the Processing of Atractylodis Rhizoma

Kun-Teng Wang / School of Pharmacy, Taipei Medical Univ., Taiwan

PS21-83 Oct. 21st, 15:30~16:00

Study of Effects of Glycyrrhizic acid, Isoliquiritigenin and Davidigenin on Mymetrial Contraction in Rat

Miyoko Kushibiki / Akita Univ., Japan

PS21-84 Oct. 21st, 15:30~16:00

Quality of Life among Obese Korean Women who want acupuncture and herbal Medicine

Young-Dal Kwon / Dept. of Rehabilitation Medicine and Acupuncture, Wonkwang Univ. of Korea

PS21-85 Oct. 21st, 15:30~16:00

Analysis of item on physical and mental elements and development of its new measurement standard through repetitive measurements of QSCCII

Young-Kyu Kwon / Dept. of Physicology, Daegu Haany Univ., Korea

PS21-86 Oct. 21st, 15:30~16:00

Quality of life and climacteric complaints in women seeking medical advice on alternative medical systems: assessment by WHOQOL-BREF questionnaire

Jung-Nien Lai / Taipei Municipal Yang Ming Hospital, Taiwan



PS21-87 Oct. 21st, 15:30~16:00

A Diagnostic Expert System of Peptic Ulcer Disease in Chinese and Western Medicine

Kay Lan / Department of Biomedical Engineering, Taiwan

PS21-88 Oct. 21st, 15:30~16:00

Analgesic effect of amygdalin isolated from *Prunus armeniaca*, an apricot seed

Hye-Jung Lee / Graduate School of East-West Medical Science, Kyung Hee Univ., Korea

PS21-89 Oct. 21st, 15:30~16:00

Anti-inflammation Activity of Chinese Medicines : Inducible Nitric Oxide Synthase Inhibition of *Punica granatum* Linne

Chia-Jung Lee / School of Pharmacy, Taipei Medical Univ., Taiwan

PS21-92 Oct. 21st, 15:30~16:00

Validation of Newly Developed Bee Venom Coated Needles

Hyang-Sook Lee / College of Korean Medicine, SangJi Univ., Korea

PS21-93 Oct. 21st, 15:30~16:00

Reliability of Pulse Diagnosis in 8 Constitutional Medicine; A Pilot Study

Hyang-Sook Lee / College of Korean Medicine, SangJi Univ., Korea

PS22-94 Oct. 22nd 15:30~16:00

The Analgesic Effect and its Mechanism of Bee Venom Acupuncture in the Collagen-induced Arthritis Rats

In-Tae Chung / College of Oriental Medicine, Kyunghee Univ. Korea

PS22-95 Oct. 22nd 15:30~16:00

Inulin From Dahlia Tuber Increases Glucose Uptake In C2C12 Myotubes By The Activation Of AMP-activated Protein Kinase

Jong-hwa Lee / Department of East-West Medicine, Graduate School, Kyung Hee Univ., Korea

PS22-96 Oct. 22nd 15:30~16:00

Studies on the Effect of *Hoveniae Ramulus* Water Extract on Hepatoprotection and Antifibrosis

Jong-Ahn Lee / Dept. of Herbology, Graduate School of Kyung Hee Univ., Korea

PS22-97 Oct. 22nd 15:30~16:00

Effect of Moxibustion on Patients with Idiopathic Parkinson's Disease

Sang-Hoon Lee / College of Oriental Medicine, Kyung Hee Univ., Korea

PS22-98 Oct. 22nd 15:30~16:00

Effect of Moxibustion Treatment on UPDRS and Heart Rate Variability in Idiopathic Parkinson's Disease Patients

Sang-Hoon Lee / College of Oriental Medicine, Kyung Hee Univ., Korea

PS22-99 Oct. 22nd 15:30~16:00

The acupuncture therapy of senile melancholia, insomnia, amnesia and its parallel study through oriental medicine music therapy.

Seung-Hyun Lee / Dept. of Oriental Medicine Music therapy, Kyung-Hee Univ., Korea

PS22-101 Oct. 22nd 15:30~16:00

Effects of *Cirsium japonicum* var. *ussuriense* Extract on Tumor Immunity

Yeon-Weol Lee / Dept. of East-West Cancer Center, Daejeon Univ., Korea

PS22-102 Oct. 22nd 15:30~16:00

Immunomodulatory effects of aqueous - extracted *Zingiberis rhizoma* on methotrexate induced immune suppression in mouse spleen cells

Young-Sun Lee / Dept. of Traditional Health Resource Development, Sung Duk College, Korea

PS22-103 Oct. 22nd 15:30~16:00

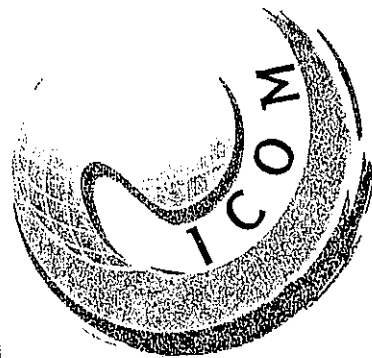
Vegetable Nutrient Liquid of Land Herb against Lipid Peroxidation on Rat Liver Homogenate and Heart Mitochondria

Hsien-Ren Liao / Department of Chemistry, Tamkang Univ., Taiwan

PS22-104 Oct. 22nd 15:30~16:00

Effects of baicalein on lipid peroxidation and acetylcholine release in hippocampal tissues of b-amyloid peptide-(25-35)-treated mice

Jyh-Fei Liao / National Yang-Ming Univ., Taiwan



The 13th International Congress of Oriental Medicine



PROGRAM BOOK

Subject

Ways to a Better Life in an Ageing Society

Period

October 20-23, 2005

Venue

EXCO DAEGU, KOREA

Sponsored By

- World Health Organization (WHO)
- ☯ Ministry of Health & Welfare (MOHW), ROK
- ☯ Ministry of Culture & Tourism (MCT), ROK
- ▲ Daegu Metropolitan City
- ☯ Korean National Tourism Organization (KTO)



ISOM

The International Society of Oriental Medicine
The Association of Korean Oriental Medicine



AKOM



Distinguished Ladies and Gentlemen, honorable Oriental Medicine researchers from 40 countries around the World!

We are honored and proud to welcome you to the '13th International Congress of Oriental Medicine' under the motto 'Ways to a Better Life in an Aging Society' here in Korea on such a beautiful, bright and clear autumn day. My deepest thanks to all of you for your participation!

The 21st century, characterized by the evolvement of a knowledge-based society where state-of-the-art technologies in the electrical & electronics industries, in mechanics, automation, artificial intelligence, and bionics, as well as in life science have achieved spectacular growth rates, is offering a multitude of amenities and comforts for an improved quality of life.

Yet many people around the world still suffer from diseases and health-related problems, which is a fact of life and a challenge we have to meet.

In particular, earlier this month, the WHO warned that world-wide about 388 million people will die of non-contagious, chronic diseases, such as heart disease, diabetes, cancer, asthma etc., over the coming 10 years, yet also offering some solutions at the same time.

The lives of 36 million people could be saved at minimal expenses by just better controlling our living environment and preventing communicating such chronic diseases as well as focusing on preventive actions rather than trying to eradicate them.

That warning by the WHO is a clear warning that we might soon be faced with a serious crisis in pursuing our well-being and health, yet it also predicts that we will be given another opportunity and opens a whole new perspective on Oriental Medicine focusing on preventive treatment.

In this crisis of the world's medical services, I strongly believe that besides new viewpoints on healing techniques, highlights of preventive Oriental Medicine treatments applied in various countries will be presented during this "13th International Congress of Oriental Medicine" starting today. This congress is the largest academic event of its kind in the world and a great contribution to the attainment of peace and health for the citizens of the world.

Honorable Oriental Medicine researchers from all over the world! I think that 'Ways to a Better Life in an Aging Society', chosen as the leading motto of this congress, should guide us in our future endeavors as researchers and scientists of Oriental Medicine.



Our rapid transformation into an aging society is a global issue, that many other countries besides Korea are facing. So how to bring relief to our seniors suffering from a variety of senile diseases such as cancer, diabetes, and Alzheimer's is directly related to improving the quality of the older generation's life on a global scale, an improvement all of us assembled here today will also benefit from in the future.

Accordingly, I expect that every one of the excellent 299 medical papers presented during this congress by great scholars of Oriental Medicine from many countries will be a stepping stone to create a revolution in medical science, based on our speakers' long traditions and experience in the field of Oriental Medicine.

Now the field of Oriental Medicine is growing day by day as it is considered a unique solution to overcome the limits of modern medical science, escaping from the scope of peripheral medicine. Oriental Medicine is an important mainstream for the future of medical science, in which every country in the world should be much interested in and allocate considerate R&D budgets to.

Distinguished Oriental Medicine researchers from all over the world!

This academic conference, held in Daegu City, a healthy and fresh city of culture and art in Korea, will be followed by a variety of events, such as a governmental forum on how to develop the Oriental Medicine field, the 30th anniversary ceremony of the International Oriental Medicine Association, and an International Oriental Medicine Expo, as well as presentations of academic papers.

Therefore, I sincerely hope that while you are staying in Daegu, all of you will better understand the status of Korea's Oriental Medicine, make new and improve existing contacts and establish a strong network of cooperation for the further development of Oriental Medicine worldwide, all while having an enjoyable, unforgettable time and taking with you precious memories.

Let me finish by expressing my deep appreciation to all the people who didn't spare their efforts in the successful organization of this international congress and expressing my heartfelt thanks again to our participants for presenting their excellent papers. Thank you very much.

Oct. 21, 2005

Jong-Hee Um

President of the Organizing Committee for the
13th International Congress of Oriental Medicine

CONGRESS INFORMATION

Period

Oct. 20(Thursday)~23(Sunday), 2005

Venue

EXCO Daegu(Convention & Exhibition Center)
1676 Sangyeok-2dong, Buk-gu, Daegu 702-845, Korea
<http://www.excodeaegu.co.kr>

Language

Korean, English(Japanese and Chinses Interpreted)

Organized by

The International Society of Oriental Medicine
The Association of Korean Oriental Medicine

Sponsored by

World Health Organization (WHO)
Ministry of Health & Welfare (MOHW), R.O.K.
Ministry of Culture & Tourism((MCT), R.O.K
Daegu Metropolitan City
Korean National Tourism Organization(KNTO)

The 13th ICOM Organizing Committee

26-27, Gayang-dong, Gangseo-gu, Seoul, 157-200, Korea
Tel.82-2-2657-5000(ext 5062, 5064)
Fax.82-2-2657-5005 e-mail:isom@isom.or.kr
URL : www.akom.org www.isom.or.kr

The 13th ICOM Secretariat

4 Fl. Seoil Bldg., 48-12 Ogeum-dong, Songpa-gu, Seoul, Korea
Tel.82-2-3462-2525 Fax.82-2-3402-0589
e-mail:icom@icomworld.org URL : www.icomworld.org



CONTENTS

Opening Address

Contents & Congress Information

Organizing Committee of ICOM & Organization of ISOM

Congress Information

Program at a Glance

Scientific Program

EXCO FLOOR PLAN

Tour Information

General Information



ORGANIZING COMMITTEE OF ICOM / ISOM BOARD OF DIRECTORS

- President** : Jong-Hee Um O.M.D. (President of The 13th ICOM)
- Adviser** : Won-Sik Bae O.M.D. (Honorary President of ISOM)
Soon-Bong Hong O.M.D (President of ISOM)
Hwan-Young Che O.M.D.,Ph.D. (Honorary President of AKOM)
Jae-Kyu An O.M.D.,Ph.D. (Vice President of ISOM)
- Chairman** : Sook-Young Son O.M.D.,Ph.D. (Chief Vice President of AKOM)
- Vice Chairman** : Dong-Suk Park O.M.D.,Ph.D. (President of KOMS)
Hyun-Soo Shin O.M.D., Ph.D. (Chairman of the finance committee of AKOM)
Eung-Se Lee O.M.D.,Ph.D. (General Secretary of ISOM)
Won-Mok Shin O.M.D.,Ph.D. (President of Daegu chapter of AKOM)
- Consultant** : Seung-Gyo Lee O.M.D. (Auditor of AKOM)
- Member** : Chae-Bin Jung O.M.D., Ph.D. (Director of AKOM)
Do-Young Choi O.M.D., Ph.D. (Director of AKOM)
Sung-Hwan Chang O.M.D., Ph.D. (Director of AKOM)
In-Ki Park O.M.D., Ph.D. (Director of AKOM)
Sung-Soo Moon O.M.D. (Director of AKOM)
Yeon-Suk Oh O.M.D., Ph.D. (Director of AKOM)
Jong-An Lee O.M.D., Ph.D. (Vice Secretary general of ISOM)
Young-Sin Kim O.M.D., Ph.D. (Director of ISOM)
Chen-Kuo Shih O.M.D., Ph.D. (Director of ISOM)
Young-Kyu Kwon O.M.D., Ph.D. (Director of ISOM)
Sang-Woo Kim O.M.D., Ph.D.(Director of KOMS)
Yong-Suk Kim O.M.D., Ph.D. (Director fo KOMS)
Jong-Hyung Park O.M.D., Ph.D. (Professor of Kyungwon University)

ISOM BOARD OF DIRECTORS

- President** : Soon-Bong Hong O.M.D. (Korea)
- Vice President** : Jae-Kyu An O.M.D., Ph.D. (Korea)
Shozo Muroga M.D.,Ph.D. (Japan)
I-Hsin Lin M.D.,Ph.D. (Taiwan)
- Secretary General** : Eung-Se Lee O.M.D.,Ph.D. (Korea)
- Vice Secretary General** : Jong-An Lee O.M.D.Ph.D. (Korea)
Kiichiro Tsutani M.D.,Ph.D. (Japan)
Charleson-C. Hsu Ph.D. (Taiwan)
- Director** : Sook-Young Son O.M.D.,Ph.D.(Korea) Young-Sin Kim O.M.D.,Ph.D. (Korea)
Chen-Kuo Shih O.M.D.,Ph.D. (Korea) Young-Kyu Kwon O.M.D.,Ph.D. (Korea)
Toyohiko Kikutani M.D.,Ph.D. (Japan) Jong-Chol Cyong M.D. (Japan)
Shuji Ohno M.D. Ph.D. (Japan) Yoshiki Nagai M.D.,Ph.D. (Japan)
Chieh Fu Chen M.S. (Taiwan) Kun-Ying Yen Ph.D. (Taiwan)
Ming Tsuen Hsieh Ph.D. (Taiwan) Ching-Liang Hsieh M.D. (Taiwan)

■ Registration Hour

Registration Desk will be open at the following hours during the Congress.

13:30~18:00 Oct. 20th(Thur.)

09:00~18:00 Oct. 21th(Fri.)~22th(Sat.)

09:00~11:00 Oct. 23th(Sun.)

■ On-Site Registration Fee.

Classification	Fee	Classification	Fee
Participants	US\$ 450	Accompanying Person	US\$ 100
Students	US\$ 200	Gala Party(Fashion Center, Daegu, Oct. 22, 2005)	US\$ 100

1. The registration fee for general participants and students includes participation in the congress, official ceremonies, Welcome Reception, entry into the Exhibition, Abstract Book and other Congress materials.
2. The registration fee for accompanying person includes Welcome Reception, entry into the Exhibition and half day tour.

■ Method of Payment

- Credit Card / Credit Card : VISA, Master, JCB, AMEX
- Bank Transfer / Bank Account : Kookmin Bank 766537-04-000650 (Gayang-2dong Branch)
Bank Address : 1479-11 Gayang-2dong, Gangseo-gu, Seoul, Korea
Swift Code : CZNBKRSE
Beneficiary : ICOM

■ Certificate of Attendance

Certificate Attendance is available on the registration desk at the end of the congress.

■ Message Board

Message Board is set up in front of Convention Hall

■ Accommodation <Hotel Address>

- Hotel Inter-Burgo / Mt. 92-1, Manchon-dong, Soosung-Gu, Daegu Tel : +82-53-952-0088, Fax : +82-53-953-2008
- Inter-burgo Annex / Mt. 92-1, Manchon-dong, Soosung-Gu, Daegu
- Eldis Regent Hotel / 360 Beonji, Dongsan-Dong, Jung-Gu, Daegu Tel : +82-53-253-7711, Fax : +82-53-256-0406
- GS Plaza / 1060-1, Bangchon-Dong, Dong-Gu, Daegu Tel : +82-53-986-2500, Fax : +82-53-980-1666
- Grand Hotel / 563-1, Beomuh-Dong, Suseong-Gu, Daegu Tel : +82-53-742-0001, Fax : +82-53-742-0001
- Hotel J's / 326-1, Shinchun-4dong, Dong-gu, Daegu, Korea Tel : +82-53-756-6601, Fax : +82-53-756-6623
- Amigo Hotel / 28, Haseo-dong Jung-gu Daegu(Seoul 700-210 Korea Tel : +82-053-252-6001, Fax : +82-053-253-4121

■ Official Programs

- Opening Ceremony / 10:00~11:00, Oct. 21, 2005 / Convention Hall 1 (5th Fl.)
To celebrate the 13th ICOM the organizing committee will invite high ranking government officials, concerned organizations, academies who will take part in this historic opening, wishing us a meaningful, successful congress.
- Closing Ceremony / 12:00~12:30, Oct. 23, 2005 / Convention Hall 1 (5th Fl.)
The ceremony will include a report on the 13th ICOM, a speech given by the next host country and following closing declaration. The 13th ICOM will draw to an end with a festive atmosphere through farewell dinner and commemorative performance.



■ Social Programs

- Welcome Reception / 18:00~21:00, Oct. 20, 2005 / Inter-burgo Hotel Convention Hall
The welcome reception will provide the participants with a relaxed atmosphere, free drinks and cultural performance under the concept of Korean tradition.
- The 30th Anniversary of ISOM / 19:00~21:00, Oct. 21, 2005 / Inter-burgo Camelia Hall
This year is the 30th anniversary since the ISOM has been built up. To memorize this year, the organizing committee is preparing historic events.
- Gala Party / 19:00~21:00, Oct. 22, 2005 / Fashion Center
During the gala party, various performances are prepared for the participants. All delegates and accompanying persons are invited to this special gala party, which can join by paying appropriate fees. We are sure that the gala party will be memorable events for all who attend.

■ Government Forum for policies and plans of R&D Strategy for Traditional Medicine Development

- 11:00 ~ 19:00, Oct. 21, 2005 International Conference Room #505 (4th Fl.)
Hosted by the Korean Ministry of Health and Welfare, this forum meets to explore better ways for traditional medicine to contribute to human health promotion through active discussions among Ministers of Health and senior government officials. The first forum was held in Seoul, Korea, in 2001 on the subject of the "Government's Role in Traditional Medicine Development in the 21st century" and issued recommendations on increasing public access to traditional medicine, improving quality control and distribution of herbal medicines as well as enhancing information exchange among participating countries. Moving forward, the second forum will address national R&D strategies to ensure safety, efficacy and quality of traditional medicine and seek expanded opportunities for inter-country collaboration.

■ ISOM Board of Directors Meeting

- 16:00~18:00, Oct. 21, 2005 EXCO #409(4th Fl.)
ISOM directors decide the venue for next congress and discuss the future progress of the International Society of Oriental Medicine.

■ Exhibition

- Title : International Oriental Medicine Expo, Korea 2005
- Period : October 21-23, 2005
- Venue : EXCO Daegu
- Hosted by : The Association of Korean Oriental Medicine(AKOM), Daegu Metropolitan City, The Province of Gyeongsangbuk-do
- Organized by : EXCO
- Sponsored by : World Health Organization (WHO) / Ministry of Health & Welfare (MOHW), R.O.K.
Ministry of Culture & Tourism(MCT), R.O.K / Korea Food & Drug Administration
Korean National Tourism Organization(KNTO)
- Size : 200 booths, 100 companies (3,872m²)
- Website : www.hanbangexpo.com
- Items by Pavilion
 - Oriental Medicine Equipment : Oriental medicine equipment, Diagnostic & clinical examination instruments
 - Oriental Medicine Materials : Raw, semi-finished materials and herbs
 - Oriental Medicine Products : Health and skin care, cosmetics, diet food, natural products, etc.
 - Oriental Medicine Diet Products : Diet specialized programs, fat clinics
 - Oriental Medicine Hospitals : Oriental Medicine hospitals and clinics
 - Related Organizations : Oriental Medicine related organizations and universities, Local governments
 - Other sectors : Information and Technology Systems, Managing and consulting companies, Media, etc.
- Contact / Secretariat : TEL : 053-601-0581~2, FAX : 053-601-5372, E-mail : hanbang@excodaegu.co.kr

■ Preview Room

Beam Projector and Over Head Projector will be available in the preview room at #506(5th Floor Oct. 21-22, 09:00~18:00, Oct 23, 09:00~12:00) and #305(3rd Floor. Oct.22, 09:00~18:00) for presenters to preview their presentation materials. Anyone who needs those projectors should go to the preview room. There will be staff members to assist presenters in the preview room.

■ Information or Session Chair

The chairs who do not have a list of speakers in their session for their reference are requested to contact the Secretariat before their session. The chairs of each session are expected to arrive at the session room 15minutes before the session begins, and to check the attendance of speakers in the session

■ Information for Oral Presentation

Each presentation room will be equipped with three projectors. The time allocation is 30minutes (25min. presentation and 5min. Q&A) or 25minutes (20min. presentation and 5min. Q&A) for special lecture, 15minutes for presentation per one person, further Q&A for 5minutes. Will be given to all speakers in the same session simultaneously after all presentation for general lecture.

Please keep your presentation within the allocated time. All speakers are requested to report their attendance to the session staff 15minutes before the session starts.

■ Information for Poster Presentation

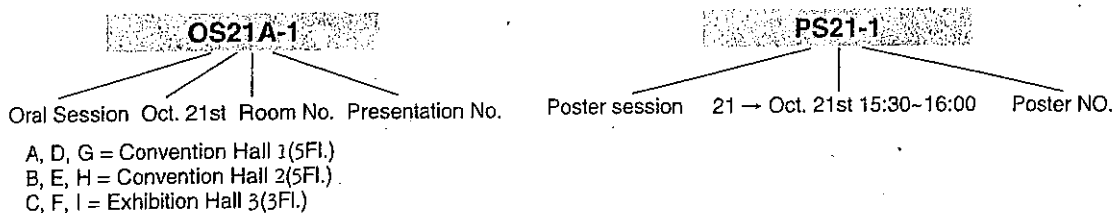
- Presentation Date : October 21st(Fri.)~October 22nd(Sat.)
- Presentation Time : 15:30 ~ 16:00(21st~22th. Oct)
- The Poster number & Presenting Author's name will be posted at the top of each panel.
- The speaker must stay near the panel during the session to answer the questions of attendees

[Installation & Removal / Display]

- Installation : October 21(Fri.), Exhibition Hall 4(3F1) / 12:00 ~ 13:00
- Display : October 21 ~ October 23(for 3days) Exhibition Hall 4(3F1)
October 21(13:30~18:00) / October 22(10:00~18:00) / October 23(10:00~12:00)
- Removal : October 23(Sun.), Exhibition Hall 4(12:30~13:30)
- Your poster will be displayed from Oct. 21st(Fri.) to Oct. 23rd(Sun.) for 3days.
- Poster Panel are 900mm(W), 1,420mm(H). One poster panel will be provided for each paper.
- Posters may be in any format as long as they fit on the panel size.
- Heading of posters should include an abstract title, author's name and author's affiliation(s).
- Body of posters should be concise and self-explanatory. You might want to put photographs, diagrams, and tables to increase its effectiveness.
- Letter of posters must be large enough to be read from a distance of 1~2 meters.
- Presenting authors are responsible for mounting and removing their posters by the designated number.
- Tape to post materials will be provided by the secretariat.
- Poster assistants will be ready to help you with any information or technical assistance you may need.

■ Information on Scientific Session

How to understand the paper identification No.



	Oct.20 (Thu.)	Oct.21 (Fri.)				Oct.22 (Sat.)			Oct.23 (Sun.)						
09 : 00 10 : 00		Registration	Opening Ceremony				Registration	OS22A Tumor	OS22B Complementary therapy	OS22C Anti-aging/ Qigong/ Regimen	Registration	OS23A Medical History/ Hyungsang Medicine/ Etc.	OS23B Eye/ ENT/ Skin disease	OS23C Diagnosis	Poster Session
10 : 00 11 : 00			Key Note Speech												
11 : 00 12 : 00		Registration	Lunch				Registration	Lunch			Registration	Closing Ceremony			
12 : 00 13 : 30			OS21A Metabolic disease/ Obesity / Renal disease/ Respiratory disease/ Hepatic and Gastrointesti- nal disease	OS21B Cardiovascular disease/ Brain and neural disease	OS21C The health policy of Gerontology (Social gerontology)	Government Forum Exhibition		OS22D Tumor	OS22E Spine and Joint disease/ Musculoskel- -etal disease/ Acupuncture and Moxibustion	OS22F Anti-aging/ Qigong/ Regimen		Poster Session Exhibition	Post ICOM		
13 : 30 15 : 30	Registration	Coffee Break			OS22G Constitutional Medicine		OS22H Spine and Joint disease/ Musculoskeletal disease/ Acupuncture and Moxibustion	OS22I OB&GY disease / Pediatrics disease							
15 : 30 16 : 00			OS21D Metabolic disease/ Obesity/ Renal disease/ Respiratory disease Hepatic and Gastrointestinal disease	OS21E Cardiovascular disease/ Brain and neural disease	OS21F The health policy of Gerontology (Social gerontology)	ISOM Board of Directors' meeting Poster Session	Coffee Break								
16 : 00 18 : 00															
18 : 00 19 : 00	Welcome Reception														
19 : 00 20 : 00															
20 : 00 21 : 00		ISOM's 30 th Anniversary Ceremony				Gala Party									



Key Note Speech
(Oct. 21/14:00~15:00 Convention Hall 1(5FI))

11:00~11:30

Ways to a Better Life in an Ageing Society-The Role of Oriental Medicine

Dong-Suk Park / President of the Korea Oriental Medical Society

11:30~12:00

WHO Strategy and Activities in Traditional Medicine

Seung-Hoon Choi / Regional Adviser in Traditional Medicine WHO, Western Pacific Regional Office

Oral Session
(Oct. 21/22 13:30~15:00 Oct. 23 10:00~12:00)

OS21A

Metabolic disease / Obesity / Renal disease / Respiratory disease/Hepatic and Gastrointestinal disease

(Oct.21, 13:30~15:30 Convention Hall1(5FI.))

< Chairpersons >

In-Hye Ham / College of Oriental Medicine, Kyung Hee Univ., Korea

Ashok kumar jain jain / s.v.s.marwari hospital and research centre, India

OS21A-1 13:30~14:00

Oriental Medicine is Essential in the Medical Care of the Elderly

Hajime Orimo / Health Science Univ., Japan

OS21A-2 14:00~14:25

Therapeutic Effects of Coptis Rhizoma in Streptozotocin-Induced Diabetic Rats.

In-Hye Ham / College of Oriental Medicine, Kyung Hee Univ., Korea

OS21A-3 14:25~14:40

Therapeutic Effects of Silymarin on Liver Fibrosis Induced by Carbon Tetrachloride in the Rats

Jer-Yuh Liu / Institute of Biochemistry and Biotechnology, Medical College, Chung-Shan Medical Univ., Taiwan

OS21A-4 14:40~14:55

Oriental Medicine:the Ultimate Resort of All Medical thought in Diabetes

Ashok Kumar Jain Jain / s.v.s.marwari hospital and research centre, India

OS21A-5 14:55~15:10

Clinic Analysis to 8000 Cases of Anal Fissure Hemorrhage

Qing Long Zhu / Longjing City Zhuqinglong Clinic Office, China

OS21A-6 15:10~15:25

The Effect of Socheongryong-tang on Sasang Constitutional Man with Common Cold

Han-Ho Bae / Dept. of Internal Medicine, Daejeon Univ., Korea

Q&A..... 15:25~15:30

OS21B

Cardiovascular disease / Brain and neural disease

(Oct.21, 13:30~15:30 Convention Hall 2 (5FI.))

< Chairpersons >

In-Soo Jang / Department of Internal Medicine, College of Korean Medicine, Woosuk University, Korea

Yuh-Chiang Shen / National Yang-Ming University, Taiwan

OS21B-1 13:30~14:00

A application of Acupuncture in Treatment Join-make Pain Syndrome of Patients by Rheumatic Dis-eases

Ponomarev Yu. V. / Tradicional Medicine Department of Vladivostok State medical univ.Vladivostok, Russia.

OS21B-2 14:00~14:25

Effect of ST36(Zusanli) Moxibustion on Blood Pressure Elevation in Hypertensive Patients : A Randomized Controlled Trial

In-soo Jang / Department of Internal Medicine, College of Korean Medicine, Woosuk Univ., Korea

OS21B-3 14:25~14:40

The Protective Effects of Scutellaria Baicalensis on Rat Cortical Neuron Against Glutamate Damage Via Calcium Related Mechanism

Hsin-Hsueh Lee / Taipei Medical Univ., Taiwan



OS21B-4 14:40~14:55

Observation of the Change of the Heart Function Using the Magnetocardiograph (MCG) with Heart Disorder Patients after Acupuncture Treatment.

Yeon-Hee Ryu / Dept. of Medical research, Korea Institute of Oriental Medicine, Korea

OS21B-5 14:55~15:10

Effect of Paeoniflorin on Cerebral Infarct Induced by Ischemia -Reperfusion in Rats

Nou-Ying Tang / China Medcial Univ., Taiwan

OS21B-6 15:10~15:25

Taxifolin Ameliorates Cerebral Ischaemia-Reperfusion Injury in Rats through Its Anti-oxidative Property

Yuh-Chiang Shen / National Research Institute of Chinese Medicine, Taipei, Taiwan

Q&A 15:25~15:30

OS21C

The Health Policy of Gerontology (Social Gerontology)

(Oct.21, 13:30~15:30 Exhibition Hall 3 (3Fl.))

< Chairpersons >

Juan Carlos Crespo de la Rosa / Grupo Master Universitario de Acupuntura, Spain

Dong-Woon Han / Dept. of Preventive Medicine, Hanyang Univ., College of Medicine, Korea

OS21C-1 13:30~14:00

Giving A Full Play to the Advantages and Features, Fastening the Development of Traditional Chinese Medicine

Hongxin Cao / Chinese Academy of Traditonal Chinese Medicine, China

OS21C-2 14:00~14:25

Biophysical and Nuclear Bases of the Action of Biological Interpretative Oriental Medicine on Twenty-First Century's World Health Development

Juan Carlos Crespo de la Rosa / Grupo Master Universitario de Acupuntura, Spain

OS21C-3 14:25~14:40

How to cope with the Demand of Elderly Society for Health care in Korea : Oriental Medicine Policy Options

Dong-Woon Han / Dept. of Preventive Medicine, Hanyang Univ., College of Medicine, Korea

OS21C-4 14:40~14:55

Internationalization and Unlocking the Scientific Value of Chinese Medicine

Neung Hin Wing / Univ. of Macau Chair of the Univ. Council, Hong Kong

OS21C-5 14:55~15:10

Crocic Improves Learning and Memory Performances Impaired by 4-Vessel Occlusion in Rats

Young-Ock Kim / Jaseng Research Institute, Korea

OS1C-6 15:10~15:25

Evaluation and Analysis of Research Results of Taiwan's Chinese Medicine and Pharmacy Technology

Po-Chow Hsieh / Committee on Chinese Medicine and Pharmacy, Department of Health, Executive Yuan, R.O.C, Taiwan

Q&A 15:25~15:30

OS21D

Metabolic disease / Obesity / Renal disease / Respiratory disease / Hepatic and Gastrointestinal disease

(Oct.21, 16:00~18:00 Convention Hall 1 (5Fl.))

< Chairpersons >

Pak Kwan HUI / Kwong Wah Hospital, Hong Kong

Myeong-Jong Lee / Dept. of Oriental Rehabilitation Dongguk Univ., Korea

OS21D-1 16:00~16:25

Hepatoprotective Activity of Ethnomedicinal plants in Taiwan

Pei-Yun Yeh / Graduate Institute of Agronomy, College of Bioresearches and Agriculture, National Taiwan Univ., Taiwan

OS21D-2 16:25~16:40

Clinical Study on Hypothyroidism through 281 Cases of Hypothyroid Patients

Jae-Hyun Park / Park and Bae Oriental Clinic, Daegu, Korea

OS21D-3 16:40~16:55

Cordyceps Sinesis Improved Pulmonary Fibrosis in Convalescing SARS Patients

Pak Kwan HUI / Kwong Wah Hospital, Hong Kong

OS21D-4 16:55~17:10

Anti-inflammatory Effects of Three Chen-Chi-Tang Decoctions: Relationship with Their Purgative Activities

Sung-Hui Tseng / School of Pharmacy, Taipei Medical Univ., Taiwan

Q&A 17:10~17:15

OS21D-5 17:15~17:30

Anti-obesity Effect of Gyeongshinhae Gihwan (GGT1) on hGHTg(human growth hormone transgenic) Obese female Rats

Soon-Shik Shin / Research Institute of Oriental Medicine & Department of Prescriptionology, College of Oriental Medicine, Dongeui

OS21D-6 17:30~17:45

A Case of Nephrotic Syndrome Successfully Treated with Kampo Therapy

Yoshiki Nagai / Univ. of Tokyo, Japan

OS21D-7 17:45~18:00

Effects of Pinelliae Rhizoma on the Obese Zucker's Lipid of Blood Serum and Skeletal Muscles Fatty Acid Metabolism Rats

Myeong-Jong Lee / Dept. of Oriental Rehabilitation, Dongguk Univ., Korea

Q&A 18:00~18:05

OS21E

Cardiovascular disease / Brain and neural disease

(Oct.21, 16:00~18:00 Convention Hall 2 (5Fl.))

< Chairpersons >

Ching-Liang Hsieh / China Medical University & Hospital, Taiwan

Chol-Hoon Shon / Dep't of Dermatology, Ye Oriental Medical Clinic, Korea

OS21E-1 16:00~16:25

Ethiopian antihypertensive herbs a pilot trial

Hassen Taha Sherief / Department of Physiology, Faculty of Medicine, Addis Ababa University, Addis Ababa, Ethiopia

OS21E-2 16:25~16:40

Clinic Observation to the Traditional Chinese Medicine Medical External Therapy to 138 Cases of Apoplectic Dysphagia Mainly with Electric Head Acupuncture Therapy

Seoung-Bae Jin / Eiseong Oriental Hospital, Korea

OS21E-3 16:40~16:55

Microglia, Apoptosis, Tumor Necrosis Factor- α , Interleukin-1 β and Activator Protein-1 Expression in the Effect of Gui-Zhi-Fu-Ling-Wan on Cerebral Infarct Induced by Ischemia-Reperfusion in Rats

Ching-Liang Hsieh / China Medical Univ. & Hospital, Taiwan

OS21E-4 16:55~17:10

Application of Oriental medicine in cosmetic acupuncture therapy

Chol-Hoon Shon / Dep't of Dermatology, Ye Oriental Medical Clinic, Korea

Q&A 17:10~17:15

OS21E-5 17:15~17:30

Improvement of Botanical SB221 on Endothelial Dysfunction in Spontaneously Hypertensive Rats

Du-Shieng Chien / SunTen Phytotech Co., Ltd., Taiwan

OS21E-6 17:30~17:45

Clinical Application Instances of a combination Treatment of four therapies from TCM. Involved four therapies are Plum-blossom needle, Cupping, TDP irradiating, Traditional Chinese medicine of Externa

Dongzhe Li / Yanji Head Acupuncture Apoplexia Research Institute, China

OS21E-7 17:45~18:00

Investigation the Mechanisms of Acupuncture Against the Cardiac Muscle Cell Hypertrophy and Apoptosis in Spontaneous Hypertensive Rats

Chih-Yang Huang / Institute of Biochemistry and Biotechnology, Chung-Shan Medical Univ., Taiwan

Q&A 18:00~18:05



OS21F

The Health Policy of Gerontology (Social Gerontology)

(Oct.21, 16:00~18:00 Exhibition Hall 3 (3Fl.))

< Chairpersons >

I-hsin Lin / Committee on Chinese Medicine and Pharmacy, Department of Health, Executive Yuan, R.O.C, Taiwan*Henry Lee* / Chinese Medicine Association of Suppliers, United Kingdom

OS21F-1 16:00~16:25

How to Market Traditional Chinese Medicine in China using a Modern Marketing Approach

Abraham Chan / Modernized Chinese Medicine International Association Limited (MCMA), Hong Kong

OS21F-2 16:25~16:40

Five-Year Plan (2004-2008) of Establishing Medication Safety Environment of Chinese Medicine in Taiwan and Primary Report on Its Implementation Results

I-hsin Lin / Committee on Chinese Medicine and Pharmacy, Department of Health, Executive Yuan, R.O.C, Taiwan

OS21F -3 16:40~16:55

How will the European Union Directive impact on the future development of the TCM?

Henry Lee / Chinese Medicine Association of Suppliers, Chairman, United Kingdom

OS21F-4 16:55~17:10

Traditional Korean Community Health Service

Saeng-Gyu Lee / Jinan Health Center, Korea

Q&A 17:10~17~15

OS21F-5 17:15~17:30

Complementary and Oriental Medicine in Switzerland

Brigitte Ausfeld-Hafter / Institute for Complementary Medicine, KIKOM, Switzerland

OS21F-6 17:30~17:45

The Development Strategy of Taiwan's Chinese Medicine and Pharmacy

I-Hsin Lin / Committee on Chinese Medicine and Pharmacy, Department of Health, Executive Yuan, R.O.C, Taiwan

OS21F-7 17:45~18:00

The use of complementary medicines in Australia : Implications for ageing well.

Damien Ryan / School of Health Sciences, Victoria Univ., Australia

Q&A 18:00~18:05

OS22A

Tumor

(Oct.22, 10:00~12:00 Convention Hall 3 (5Fl.))

< Chairpersons >

Sayfone Phounsavan / Breast Cancer Research Group, Department of Health, Laos*Hwa-Seung Yoo* / Daejeon Univ., Korea

OS22A-1 10:00~10:30

Development of the Chinese medical insurance in Taiwan

Jaung-Geng Lin / China Medical University, Taichung, Taiwan

OS22A-2 10:30~10:55

Integrated Medicine Approach to Breast Cancer 2005, Case Report

Sayfone Phounsavan / Breast Cancer Research Group, Department of Health, Laos, United States

OS22A-3 10:55~11:10

Changes of Serum VEGF, bFGF levels and platelet counts in 100 Cancer patients treated with Hang-Am-Dan

Nam-Heon Lee / Dunsan Oriental Hospital of Daejeon Univ., Korea

OS22A-4 11:10~11:25

New Ways in Treatment of Cerebral Palsy and Brain Strokes

Petr Fiala / 1st Medical Faculty Charles' Univ. Prague, Czech Republic

OS22A-5 11:25~11:40

Analysis of Survival in 273 Terminally Ill Cancer Patients Treated with Traditional Oriental Therapies

Jung-Hyo Cho / Dunsan Oriental Hospital of Daejeon Univ., Korea

OS22A-6 11:40~11:55

Effects of Cordyceps Militaris Extract on Tumor Immunity

Hwa-Seung Yoo / Daejeon Univ., KOREA

Q&A11:55~12:00

Complementary Therapy

(Oct.22, 10:00~12:00 Convention Hall 2 (5Fl.))

< Chairpersons >

Dorit Gamus / Society of Complementary Medicine, Israel
Byung-Hee Koh / College of Oriental Medicine, Kyung Hee Univ., Korea

OS22B-1 10:00~10:30

Acupuncture in or out of Traditional Oriental Medicines

Francois Beyens / ICMART, Belgium

OS22B-2 10:30~10:55

The evidence for CAM in mental health

Max Pittler / Complementary Medicine, Peninsula Medical School Universities of Exeter & Plymouth, United Kingdom

OS22B-3 10:55~11:10

Complementary and Alternative Medicine (CAM) in Rehabilitation

Dorit Gamus / Society of Complementary Medicine, Israel

OS22B-4 11:10~11:25

Effects of a Complementary Stress Management on Autonomic Control and Cardiovascular Integrity

Kyung-Eh An / East-West Medical Research Institute, Kyung Hee Univ., Korea

OS22B-5 11:25~11:40

Constitutional disorders in elderly and their management :ayurveda and panch karma therapy

Ashok Kumar Jain Jain / president, Indian Institute of Traditional Medicine, India

OS22B-6 11:40~11:55

The Study on the effect of Oriental Music Therapy in ischemic stroke patients Classified by Sasang Constitutional Medicine

Byung-Hee Koh / College of Oriental Medicine, Kyung Hee Univ., Korea

Q&A11:55~12:00

Anti-aging / Qigong / Regimen

(Oct.22, 10:00~12:00 Exhibition Hall 3 (3Fl.))

< Chairpersons >

Ji-Cheon Jeong / Dongguk Univ, Korea
Sue Yie / Division of Geriatrics, David Geffen School of Medicine at UCLA, United States

OS22C -1 10:00~10:30

Vital Energetic Alignment Procedures

Steven Aung / Canadian Medical Acupuncture Society, Canada

OS22C -2 10:30~10:55

The Art of Compassion- Confucius Was Right

James Flowers / President of Australian Acupuncture and Chinese Medicine Association, Australia

OS22C -3 10:55~11:10

Modulation of Oxidative Stress and Aging Process by Ichungwhan

Ji-Cheon Jeong / Dongguk Univ, Korea

OS22C-4 11:10~11:25

Improving Quality of Life for Older Adults with Persistent Pain through

Sue Yie / Geffen School of Medicine at UCLA, United States

OS22C-5 11:25~11:40

Inspection of Preventive Diagnosis System (HIT) and Clinical Evaluation of the Effects of EM-X

Hideaki Tani / Keio Univ., Japan

OS22C-6 11:40~11:55

The Effect of Dansamtongmektang(DSTMT) and Dansamsengmeksan(DSSMS) on Hyperlipidemia and Brain & Cell Damage by Hypoxia

yong-jin Kim / Daelim Oriental Medical, Taejon, Korea

Q&A11:55~12:00

**Tumor**

(Oct.22, 13:30~15:30 Convention 1 (5Fl.))

< Chairpersons >

Yeun-Wha Gu / Suzuka University of Medical Science, Japan*Min-Kyo Shin* / Dept. of Herbology College of Oriental Medicine, Wonkwang Univ., Korea

OS22D-1 13:30~14:00

Development of anti-angiogenic agents from Oriental herb

Sung-Hoon Kim / Lab of Angiogenesis and Chemoprevention, Graduate School of East-West Medical Science, Kyunghee Univ., Korea

OS22D-2 14:00~14:25

Experience of treating cancer with the Integration of Traditional Chinese Medicine (TCM) and Western medicine

Bing-Kui Piao / Guang An Men Hospital, China

OS22D-3 14:25~14:40

Electro-acupuncture And Chinese Massage Therapy Has Additional Value To Back Care Education And Self-exercise For Chronic Low Back Pain

Wing Cheung Wong / Kwong Wah Hospital, Hong Kong

OS22D-4 14:40~14:55

Anti-tumor Effects in ECT (Electrochemical treatment) for the Mechanism

Yeun-Hwa Gu / Suzuka Univ. of Medical Science, Japan

OS22D-5 14:55~15:10

Studies on a New Method of Attaching Traditional Medicines for Treatment of Incurable Diseases

Min-Kyo Shin / Dept. of Herbology College of Oriental Medicine, Wonkwang Univ., Korea

OS22D-6 15:10~15:25

Measuring the outcome of acupuncture and integration of Chinese and western medicine on adhesive capsulitis

Yung-Hsien Chang / China Medical Univ. & Hospital, Taiwan

Q&A15:25~15:30

Spine and Joint disease / Musculoskeletal disease / Acupuncture and Moxibustion

(Oct.22, 13:30~15:30 Convention Hall 2 (5Fl.))

< Chairpersons >

Joe Sodipo / First Centre for Integrative Medicine and Research, Nigeria)*Sabina Lim* / East-West Medical Research Institute. Kyung Hee University, Korea

OS22E-1 13:30~14:00

Acupuncture and evidence-based medicine - the research programs on chronic pain in Germany

Klaus Linde / Centre for Complementary Medicine Research, Germany

OS22E-2 14:00~14:25

Methodological problems of acupuncture research

Francesco Ceccherelli / Institute of Anesthesiology, Univ. of Padova, A.I.R.A.S., Italy

OS22E-3 14:25~14:40

Effects of Cheongpa-Jun on Carageenan and Adjuvant Arthritis in Rats

Joon-Sik Shin / Jaseng Research Institute, Korea

OS22E-4 14:40~14:55

Opioid Peptides: Painkillers in Acupuncture

Joe Sodipo / First Centre for Integrative Medicine and Research, Nigeria

OS22E-5 14:55~15:10

New anatomic structure analysis of acupuncture points.

Helmut Liertzer / Orthopaedic department, Herz-Jesu Hospital, Vienna; Ludwig Boltzmann Institute for Acupuncture, Vienna, Austria; ICMART, Austria

OS22E-6 15:10~15:25

Development of a smart thermo-acupuncture system

Sabina Lim / East-West Medical Research Institute. Kyung Hee Univ., Korea

Q&A15:25~15:30



Anti-aging / Qigong / Regimen

(Oct.22, 13:30~15:30 Exhibition Hall 3 (3Fl.))

< Chairpersons >

Yong-suk Kim / Department of Acupuncture & Moxibustion, Kangnam Hospital of Korean Medicine, Kyung Hee Univ., Korea.

Ping-Tsun Chang / Taipei Medical Univ., Taiwan

OS22F-1 13:30~14:00

Phase Dynamics, Key to Advanced Auricular Therapy

Bryan L. Frank M.D. / ICMART, United States

OS22F-2 14:00~14:25

Age - related changes of the spinal column and paraspinal muscles. Treatment modalities and protection against degeneration.

Miltiades Karavis / Hellenic Medical Acupuncture Society, Greece

OS22F-3 14:25~14:40

The Effect of Ultraviolet-B(UV-B) radiation on the level of calcium, vitamin D3, cholesterol and BMD in postmenopausal women

Yong-suk Kim / Department of Acupuncture & Moxibustion, Kangnam Hospital of Korean Medicine, Kyung Hee Univ., Korea.

OS22F-4 14:40~14:55

A Study on the Health Care of the Aged in View of the Kings of the Joseon Dynasty.

Hai-Woong Lee / College of Oriental Medicine, Donggeui Univ., Korea

OS22F-5 14:55~14:10

Protective Effects of Agaricus blazei Murrill against Oxidative Stress on Human Erythrocytes and Mouse Kidney Tissue

Ping-Tsun Chang / Taipei Medical Univ., Taiwan

OS22F-6 15:10~15:25

The Study of local acupuncture point selection for treatments of subacromial bursitis & supraspinatus tendonitis

Seung-Tae Baek / Dongguk Univ International Hospital., Korea

Q&A15:25~15:30

Constitutional Medicine

(Oct.22, 16:00~18:00 Convention Hall 1 (5Fl.))

< Chairpersons >

Kiney I Moon / Energy Medicine Center, United States

Eui-Ju Lee / College of Oriental Medicine, Kyunghee Univ., Korea

OS22G-1 16:00~16:25

A Study on the Distribtional Rate of Sasangin in Korea

Tae-Gyu Lee / College of Oriental Medicine, Kyung Hee Univ.,Korea

OS22G-2 16:25~16:40

Sound Characteristics of Sasang Constitutional Type Using PSSC-2004 in the Korean Chindren

Dal-Rae Kim / Sang-Ji Univ. Oriental Medical Hospital, Korea

OS22G-3 16:40~16:55

264 Constitution Acupuncture

Kiney Moon / Energy Medicine Center, United States

OS22G-4 16:55~17:10

Pilot Study on the Classification for Sasangin by the Voice Analysis

Eui-Ju Lee / College of Oriental Medicine, Kyunghee Univ., Korea

Q&A17:10~17:15

OS22G-5 17:15~17:30

A Clinical Case Study of the Treatment of Soyangin Diabetic Gangrene

Mahn-Hoi Huh / Je Won Oriental Medical Clinic

OS22G-6 17:30~17:45

The Study on Methods for Sasang Constitution Diagnosis

Jong-Won kim / College of Oriental Medicine, Donggeui Univ., Korea

OS22G-7 17:45~18:00

The Case-control Study of Ischemic Stroke According to Sasang Constitution

Min-Woo Hwang / College of Oriental Medicine, Kyung Hee Univ., Korea

Q&A18:00~18:05



Spine and Joint disease / Musculoskeletal disease / Acupuncture and Moxibustion
(Oct.22, 16:00~18:00 Convention Hall 2 (5Fl.))

< Chairpersons >

Mircea Ifrim / Chen Feng Ifrim / Commission of Health & Family of Romania Parliament/ ORADEA University, Romania

Chris Zaslowski / College of Traditional Chinese Medicine University of Technology, Sydney, Australia

OS22H-1 16:00~16:25

Bonghan SanAI, Microcells and Adult Stem Cells

Kwang-Sup Soh / Seoul National Univ., Korea

OS22H-2 16:25~16:40

Contribution to the Study of the Histochemical Structure of Acupoints and Meridians in Correlation with the Age, Extrapolated on Some Therapeutic Possibilities of the Traditional Medicine

Mircea Ifrim / Chen Feng Ifrim / Commission of Health & Family of Romania Parliament/ ORADEA Univ.

OS22H-3 16:40~16:55

"Acupuncture Case Study" in U.S. Congress
Y.C Chan / Acupuncture Clinic of Maryland, United States

OS22H-4 16:55~17:10

Novel results in Danish Medical Research in Acupuncture and Political Trends regarding Governmental Approval of Acupuncture in Northern Europe

Ruth Kirkeby / Danish Medical Association of Acupuncture, Denmark

Q&A17:10~17:15

OS22H-5 17:15~17:30

On safety issues of acupuncture given by recently trained physiotherapists

Seppo Y.T. Junnila / Finnish Medical Acupuncture Society, Finland

OS22H-6 17:30~17:45

Needling Sensation and Pain: Are They Different And What Contribution Do They Make In Effecting Pressure Pain Threshold?

Chris Zaslowski / College of Traditional Chinese Medicine Univ. of Technology, Sydney, Australia

OS22H-7 17:45~18:00

Traditional Chinese Medicine in the Treatment of Patients with Ankylosing Spondylitis: A Randomized Case-Control Pilot Study.

Cheng-Chung WEI / Chung Shan Medical Univ. Hospital, Taiwan

Q&A18:00~18:05

OB&GY disease / Pediatrics disease
(Oct.22, 16:00~18:00 Exhibition Hall 3 (3Fl.))

< Chairpersons >

Hung-Chien Wu / China Medical University, Taiwan
Jung-Hoon Cho / Dept. of Oriental Gynecology, College of Oriental Medicine, Kyung Hee Univ., Korea

OS22I-1 16:00~16:25

Pediatric Alternative Medicine: National Institutes of Health Funded Projects

Fayez Ghishan / Pediatric Center Univ. of Arizona Health Sciences Center, United States

OS22I-2 16:25~16:40

A Study on Result Enumeration of Oriental OB&GY Questionnaires

In-Seon Lee / College of Oriental Medicine, Dongeui Univ., Korea

OS22I-3 16:40~16:55

The Instrumentation of Tongue Diagnosis in Traditional Chinese Medicine

Hen-Hong Chang / Center for Traditional Chinese Medicine, Chang Gung Memorial Hospital, Taiwan

OS22I-4 16:55~17:10

Uterine Myoma 41 Case Series

Hyo-Sun Wee / Dept. of Oriental Gynecology, Conmaul Oriental Medicine Hospital, Korea

Q&A17:10~17:15

PS22-105 Oct. 22nd 15:30~16:00

Effects of Gagamdokhwalgisang-Tang(GD;加減獨活寄生湯) on the Morphometric Changes of Femur and the Factors Related with Bone Metabolism in Ovariectomized Rats

Eun-Mee Lim / Dept. of Oriental Medicine Graduate School, Kyungwon Univ., Korea

PS22-106 Oct. 22nd 15:30~16:00

Obstacles and Resolutions for GMP-noncompliant Traditional Chinese Medicine Pharmaceutical Companies to be GMP-compliant

I-Hsin Lin / Committee on Chinese Medicine and Pharmacy, Department of Health, Executive Yuan, Taiwan, R.O.C., Taiwan

PS22-107 Oct. 22nd 15:30~16:00

Research of Taiwan's Chinese Medicine and Pharmacy as well as Result Analysis of SARS Prevention

I-Hsin Lin / Committee on Chinese Medicine and Pharmacy, Department of Health, Executive Yuan, R.O.C, Taiwan

PS22-108 Oct. 22nd 15:30~16:00

Anti-inflammatory Neolignans form Piper kadsura

Lie-Chwen Lin / National Research Institute of Chinese Medicine, Taiwan.

PS22-109 Oct. 22nd 15:30~16:00

The Antioxidant Constituents from *Spatholobus suberectus* Dunn.

Yi-Pei Lin / Graduate Institute of Pharmacognosy, Taipei Medical Univ., Taiwan

PS22-110 Oct. 22nd 15:30~16:00

Salvianolic acid A-a Polyphenol from *Salvia miltiorrhiza*, attenuates proliferation in Rat Hepatic Stellate Cell Line HSC-T6 Cells

Yun-Lian Lin / National Research Institute of Chinese Medicine, Taiwan

PS22-111 Oct. 22nd 15:30~16:00

The Antitumor Effects of Taiwanese Endemic Plants in Vitro and in Vivo Studies

Hsiang-Yin Liu / School of Pharmacy, Taipei Medical Univ., Taiwan

PS22-112 Oct. 22nd 15:30~16:00

Effect of Blood Lipid Regulation Therapy on Vascular Endothelial Function in Elderly Patients with Coronary Heart Disease

Ronglin Liu / Department of Technique Tianjin PULUOBI Bioengineering Technique Co Ltd., China

PS22-113 Oct. 22nd 15:30~16:00

Anti-cancer effect, Radioprotection effect and Anti-allergy for *Enterococcus Faecalis* (EF 2001)

Yoshihiko Maeda / Toyoda Medical Corporation Kariya General Hospital, Japan

PS22-114 Oct. 22nd 15:30~16:00

Radioprotection effect fetal effects with acupuncture

Toshihiro Maenaka / Faculty of Health Science, Suzuka Univ. of Medical Science, Japan

PS22-115 Oct. 22nd 15:30~16:00

The Feature in Senkinhou that was not modified in the North Sung Dynasty China

Takanori MATSUOKA / Department of Tumor Surgery, Kochi Medical School, Kochi Univ., Nankoku-city, Japan

PS22-116 Oct. 22nd 15:30~16:00

A Randomized Trial of Saam (舍岩) Acupuncture in Patients with Knee Osteoarthritis

Mu-Hong Min / College of Oriental Medicine, Kyung Hee Univ., Korea

PS22-117 Oct. 22nd 15:30~16:00

Human Ageing Factor - Gravitational Stress

Kiney Moon / Energy Medicine Center, United States

PS22-118 Oct. 22nd 15:30~16:00

Immune Activity and radioprotection effect for *Enterococcus Faecalis* (EF 2001)

Hajime Mozen / Suzuka Univ. of Medical Science, Japan

PS22-119 Oct. 22nd 15:30~16:00

Protective effects of keishibukuryogan against kidney damage in spontaneously diabetic WBN/Kob rats

Takako Nakagawa / Toyama Medical and Pharmaceutical Univ., Japan



PS22-120 Oct. 22nd 15:30~16:00
Usefulness of serum KL-6 (MUC1) levels for indicating herbal medicine-induced pneumonitis (drug-induced pneumonitis)
Masamitsu Nakajima / International Univ., Japan

PS22-121 Oct. 22nd 15:30~16:00
The trial of quantification on the pathological concepts of KI, Blood and Body Fluids by Mahalanobis-Taguchi System
Shibahara Naotoshi / Toyama Med. & Pharm. Univ., Japan

PS22-122 Oct. 22nd 15:30~16:00
A Study of the Annal of Lü Buwei's Conception
Yon-Seok Oh / Kyung Hee Univ., Korea

PS22-123 Oct. 22nd 15:30~16:00
Radiation protection effect of *Lepidium meyenii* Walp and *Epimedium koreanum* by animals on fertility
Masami OSHIMA / Suzuka Univ. of Medical Science, Japan

PS22-124 Oct. 22nd 15:30~16:00
Studies on the Characteristics of Eastern Asian Premodern Society and Dongeubogam
Suk-Joon Park / Kyung Hee Univ., Korea

PS22-125 Oct. 22nd 15:30~16:00
Real Acupuncture Activates the movement related Brain Areas by Functional Magnetic Resonance Imaging.
Jae-Hyun Park / College of Oriental Medicine, Kyunghee Univ., Korea

PS22-126 Oct. 22nd 15:30~16:00
Clinical study on the correlation between five kinds of flaccidity in infants(五軟), five kinds of retardation(五遲) and developmental disorders, mental retardation
Jae-Hyung Park / HaeMa OM., Korea

PS22-127 Oct. 22nd 15:30~16:00
28 Day Repeat Oral Dose Toxicity Test of "Mawhangyounpyetang" extract in Male and Female SD rat
Mee-Yeon Park / Dept. of Oriental Medicine, Daegu Haany Univ. Korea

PS22-128 Oct. 22nd 15:30~16:00
Clinical Study of Heart Rate Variability on Patients with Idiopathic Parkinson's Disease according to Clinical Scale(Hoehn-Yahr stage, UPDRS)
Sang-Min Park / College of Oriental Medicine, Kyung Hee Univ., Korea

PS22-129 Oct. 22nd 15:30~16:00
The Suppressive Action of Electroacupuncture on Cold Allodynia Development in the Rat Model of Neuropathic Pain
Sang-Min Park / College of Oriental Medicine, Kyung Hee Univ., Korea

PS22-130 Oct. 22nd 15:30~16:00
Aromatherapeutic Effects of the Blends of Essential Oils
Seong-Eun Park / PULGWANAMU ORIENTAL MEDICAL CENTER, Korea

PS22-131 Oct. 22nd 15:30~16:00
Paradigm analysis on Sasang Medicine
Wan-Su Park / The Armed Forces Byukje Hospital, Korea

PS22-132 Oct. 22nd 15:30~16:00
Which is more effective for menopausal disorders, HRT or Kampo therapy?
Takeshi Sakiyama / St. Marianna Univ., Japan

PS22-133 Oct. 22nd 15:30~16:00
Acupuncture for Dysphagia in Poststroke Patients: A Videofluoroscopic Study
Takashi Seki / Department of Geriatric and Complementary Medicine, Japan

PS22-134 Oct. 22nd 15:30~16:00
Genetic Identification for in vitro cultivated ginseng species
Jung-Chul Seo / Dept. of Acupuncture & Moxibustion, Daegu Haany Univ., Korea



- PS22-135 Oct. 22nd 15:30~16:00
Identification of Ginseng Species by Using RT-PCR
Jung-Chul Seo / Daegu Haany Univ., Korea
- PS22-136 Oct. 22nd 15:30~16:00
Identification among Cervus species by Using PCR-RFLP
Jung-Chul Seo / Daegu Haany Univ., Korea
- PS22-137 Oct. 22nd 15:30~16:00
Genetic Identification between *Saposhnikovia divaricata*(TURCZ) SCHISKIN and *Peucedanum japonicum* HUNBERG
Jung-Chul Seo / Daegu Haany Univ., Korea
- PS22-138 Oct. 22nd 15:30~16:00
Experimental Study of Youngdam Sagantang amibang(YSG) on the anti-allergic and anti-inflammatory effects
Eun-Ki Shim / Wonkwang Univ., Korea
- PS22-139 Oct. 22nd 15:30~16:00
Effects of Chotosan and Hooks and Stems of *Uncaria Sinensis* on Antioxidant Enzyme Activities in the Gerbil Brain after Transient Forebrain Ischemia
Yutaka Shimada / Toyama Medical and Pharmaceutical Univ., Japan
- PS22-140 Oct. 22nd 15:30~16:00
The Myofascial Meridian Stimulation Therapy (MMST) for Chronic Shoulder Pain; A Randomized Clinical Trial with Long-Term Follow-Up
Byung-Cheul Shin / Iksan Oriental Medical Hospital, Wonkwang Univ., Korea
- PS22-141 Oct. 22nd 15:30~16:00
Comparison of Immunomodulatory effects of water-extracted *Angelica gigas*, *Rehmanniae Radix*, *Paeonia japonica* and *Polygoni multiflori Radix*
Sang-Woo Shin / College of Oriental Medicine, Daegu Haany Univ. Korea
- PS22-142 Oct. 22nd 15:30~16:00
Ingredients of Sagantang and the Analysis on Compatibility of Herbal Medicine
Soon-Shik Shin / Research Institute of Oriental Medicine & Department of Prescriptionology, College of Oriental Medicine, Donggeui Univ., Busan, South Korea
- PS22-143 Oct. 22nd 15:30~16:00
The actual conditions research paper of longevity old man in YOUNG-JU areas
Yong-Seung Shin / Oriental Medicine institution, Korea
- PS22-144 Oct. 22nd 15:30~16:00
Effect of acupuncture applied to Naegwan (PC6) and Joksamni (ST36) on the fullness of epigastrium or epigastric pain : A Case Series Study
In-Chul Sohn / College of Oriental Medicine, Wonkwang Univ., Korea
- PS22-145 Oct. 22nd 15:30~16:00
Subacute Toxicity of Chunggan Plus in Beagle Dogs
Chang-Gue Son / Daejeon Univ., Korea
- PS22-146 Oct. 22nd 15:30~16:00
Effects of in vivo Synergism of Eunkyo-san, a Poly-Herbal Formula and Quinolones against *Klebsiella pneumoniae* Respiratory Infections
Kwang-Kyu Song / Daegu Haany Univ., Korea
- PS22-148 Oct. 22nd 15:30~16:00
Effective Utilization of Adverse Drug Reaction Line Lists of Kampo Products on the Web of the Ministry of Health, Labour and Welfare of Japan
Hiroki Takuma / Department of Pharmacoeconomics, Graduate School of Pharmaceutical Sciences, The Univ. of Tokyo, Japan
- PS22-149 Oct. 22nd 15:30~16:00
The effects of Hochu-ekki-to (Bu-zhong-yi-qi-tang) as the anti-stress agents in the mouse model of the altered cutaneous permeability barrier homeostasis by the restraint stress
Hisashi Tamiya / Department of Dermatology, Osaka City Univ. Medical School, Japan



PS22-151 Oct. 22nd 15:30~16:00

Needle Sensation in Acupuncture Naive Japanese Subjects

Hiroshi Tsukayama / Tsukuba College of Technology Clinic, Japan

PS22-152 Oct. 22nd 15:30~16:00

Psycho-neuro-immunological Effect of the Oil Dripping Treatment in Ayurveda

Kazuo Uebaba / International Research Center for Traditional Medicine of Toyama Prefecture, Japan

PS22-154 Oct. 22nd 15:30~16:00

Dental Caries Prevention of the Scented Tea

Ching-Chiung Wang / School of Pharmacy, Taipei Medical Univ., Taiwan

PS22-155 Oct. 22nd 15:30~16:00

Anti-tumor Effects of Osthol from *Cnidium monnieri* in Vitro and in Vivo

Ching-Chiung Wang / School of Pharmacy, Taipei Medical Univ., Taiwan

PS22-156 Oct. 22nd 15:30~16:00

Comparison of the Physio-biochemical Effects of Carbon Dioxide-enriched and Plain Water Footbaths

Hongbing Wang / International Research Center for Traditional Medicine of Toyama Prefecture, Japan

PS22-157 Oct. 22nd 15:30~16:00

Exploring of Traditional Chinese Medicine Mechanisms of Senility

Huiyan Wang / Center for Preventing Staff and Workers' Disease, China

PS22-158 Oct. 22nd 15:30~16:00

Anti-inflammatory and Analgesic Effect of JCICM-6, Extract of an Anti-arthritis Herbal Formula from Chinese Medicine, on Experimental Models of Rodents

Yuen-Fan Wong / Hong Kong Baptist Univ., China

PS22-159 Oct. 22nd 15:30~16:00

cDNA microarray gene expression profiling of melittin and mast cell degranulation peptide in human mast cell strain

Hyun-Su Woo / Kyunghee Univ., Korea

PS22-160 Oct. 22nd 15:30~16:00

Cantharidin Induced Cyclooxygenase 2 Expression in Human Bladder Carcinoma Cell Line

Chien-Chih Wu / Department of Urology, Taipei Medical Univ. Hospital, Taiwan

PS22-161 Oct. 22nd 15:30~16:00

Immuno-enhancement Effects of Huang Qi Liu Yi Tang on Cyclophosphamide Induced Leucopenia in Mice

Lien-Sheng Wu / School of Pharmacy, Taipei Medical Univ., Taiwan

PS22-162 Oct. 22nd 15:30~16:00

Phenanthroindolizidine Alkaloids from the Stems of *Ficus septica*

Tian-Shung Wu / Department of Chemistry, National Cheng Kung Univ., Taiwan

PS22-164 Oct. 22nd 15:30~16:00

Simultaneous Determination of Six Aconitum Alkaloids in Proprietary Chinese Medicines by High Performance Liquid Chromatography

Ying XIE / School of Chinese Medicine, Hong Kong Baptist Univ., Hong Kong

PS22-165 Oct. 22nd 15:30~16:00

Effects of Hot Footbath on Physio-immunological Function and Oxidative Stress

Fenghao Xu / International Research Center for Traditional Medicine of Toyama Prefecture, Japan

PS22-166 Oct. 22nd 15:30~16:00

Acupuncture Patients in Japan: A Nationwide Telephone Survey in 2005

Hitoshi Yamashita / Tsukuba College of Technology Clinic, Japan

PS22-167 Oct. 22nd 15:30~16:00

Rheumatics effect and anti-oxidation effect by *U. Tomentosa* and *Maytenus*

Takenori Yamashita / Suzuka Univ. of Medical Science, Japan



PS22-168 Oct. 22nd 15:30~16:00
 The effect of byakkokaninjinto on salivary secretion and expression of aquaporin in salivary gland in rats
Yuichiro Yanagi / Showa Univ., Yokohama northern Hospital, Japan

PS22-169 Oct. 22nd 15:30~16:00
 KHBJO67 promotes proliferation and differentiation in human osteoblasts-like Saos-2 cells
Haru Yang / Oriental Medicine Research Center for Bone & Joint Disease, Korea

PS22-170 Oct. 22nd 15:30~16:00
 Acupuncture attenuates ethanol-induced dopamine release in the nucleus accumbens through the GABAB receptor
Chae-Ha Yang / Dept. of Physiology, Daegu Haany Univ., Korea

PS22-171 Oct. 22nd 15:30~16:00
 Hepatoprotective Effect of Flavonoids Analysis by QSAR
Ling-Ling Yang / Department of Pharmacognosy, Graduate Institute of Pharmaceutical Science, College of Pharmacy, Taipei Medical Univ., Taiwan

PS22-172 Oct. 22nd 15:30~16:00
 The method of nourishing yin to reduce pathogenic fire decrease side effects of chemotherapy in Breast Carcinoma
Shao-Yu Yeh / Traditional Chinese Medical Association, Taiwan

PS22-173 Oct. 22nd 15:30~16:00
 Study of electroacupuncture therapy on repeated nicotine-induced behavioral sensitization using proteomic analysis
Mi-Jung Yeom / Graduate School of East-West Medical Science, Kyung Hee Univ., Korea

PS22-174 Oct. 22nd 15:30~16:00
 Amelioration of Rat Experimental Collagen II-induced Arthritis with QFGJS, a Preparation of an Anti-arthritic Herbal Formula from Chinese Medicine
Xiao-Qin Yi / Hong Kong Baptist Univ., China

PS22-175 Oct. 22nd 15:30~16:00
 Biological characteristics of acupuncture needle for thermo-acupuncture system
Seung-Ho Yi / East-West Medical Research Institute, Kyung Hee Univ., Korea

PS22-176 Oct. 22nd 15:30~16:00
 Methods of evaluating effectiveness following treatment for alopecia in oriental medicine clinic
Tae-Hoo Yi / College of Bioscience, Kyung Hee Univ., Korea

PS22-177 Oct. 22nd 15:30~16:00
 Analysis of nonlinear dynamical properties about the effect of the Electro-Acupuncture therapy in the rat Epilepsy model
Yun-Jin Kim / Nanjing Univ of TCM., China

PS22-178 Oct. 22nd 15:30~16:00
 An idea of deficiency / excess 虛實 in The Yellow Emperor's Internal Classic『黃帝內經』
Makoto Yoshitomi / Yojoen Public Clinic, Japan

PS22-179 Oct. 22nd 15:30~16:00
 The effect of Semen Sinapsis Albae Pressing on Dysmenorrhea
Hyoun-min Youn / Department of Acupuncture & Moxibustion, College of Oriental Medicine, Korea

PS22-180 Oct. 22nd 15:30~16:00
 Anti-tumor Principle Constituents of Hydrangea angustipetala Hayata
Pi-Ju Yu / School of Pharmacy, Taipei Medical University, Taiwan

PS22-182 Oct. 22nd 15:30~16:00
 Antioxidant and Anti-tyrosinase activities by Taiwanese indigenous Plants
Gui-Rong Zhan / Graduate Institute of Pharmacognosy, Taipei Medical Univ., Taiwan

PS22-183 Oct. 22nd 15:30~16:00
 Research on Gastrointestinal Movement of the Big Fruit Hawthorn in Mice
Yingmin Zhang / Medical Materials Company of Anguo City, Hebei Province, China



PS22-184 Oct. 22nd 15:30~16:00

Treatment of Early Rheumatoid Arthritis with Guizhishaoyaozhimu Decoction

Yongqiang Zhang / Department of Research and Development, China

PS22-186 Oct. 22nd 15:30~16:00

Combinational Pharmacology and Chemistry Methods in Screening Extraction Process of JCICM-6, Extract of an Anti-arthritic Herbal Formula from Chinese Medicine

Hua Zhou / Hong Kong Baptist Univ., China

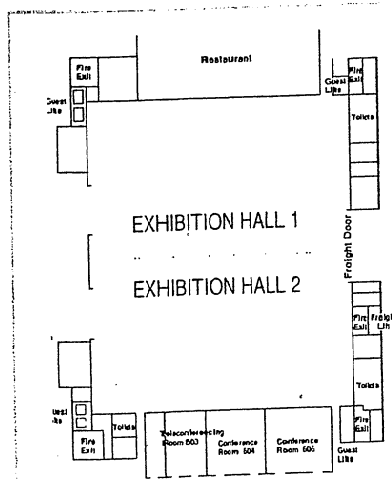
PS22-185 Oct. 22nd 15:30~16:00

Inhibitory Effect of Moutan Cortex Water Extract on TNF- α , IL-1 β , IL-6 and Nitric Oxide Production in Lipopolysaccharide - Activated Raw 264.7 Cells

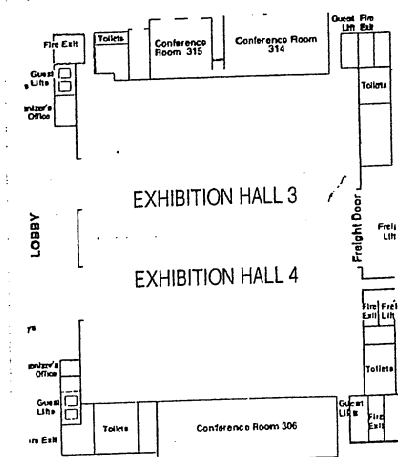
Rong-Jie Zhao / College of Medicine, Yanbian Univ., China

COEX FLOOR PLAN

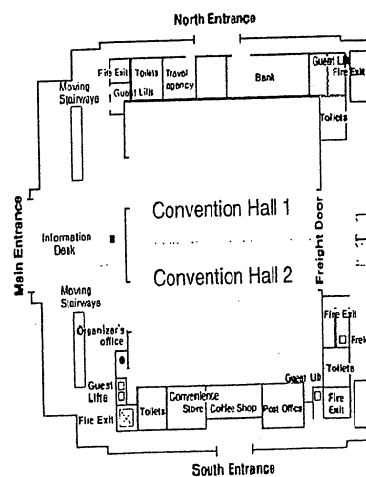
- Oral Session : Convention Hall 1,2 & Exhibition Hall 3
- Poster Session : Exhibition Hall 4 (3rd Fl.)
- Opening Ceremony : Convention Hall 1 (5th Fl.)
- Closing Ceremony : Convention Hall 1 (5th Fl.)
- Welcome Reception : Hotel Inter-Burgo Convention Hall
- The 30th Anniversary of ISOM : Inter-Burgo Camelia Hall
- Exhibition : Exhibition Hall 1,2 (1st Fl.)
- Government Forum : #505
- ISOM Board of Directors' Meeting : #409
- Symposium of Korea & Japan Oriental Medicine Society : #505
- Korea-Japan Workshop on Acupuncture and EBM : #409



Exhibition Hall (1st Floor)



Exhibition Hall (3rd Floor)



Convention Hall (5th Floor)



■ Half Day Tour

DT1 Daegu City Tour - For Accompanying Person Only

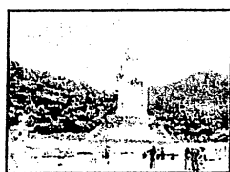
Daegu Worldcup Stadium ⇒ Daegu National Museum ⇒ Yangyeonsi Exhibition Hall



Yangyeonsi Exhibition Hall : There are three floors in this hall. The first floor is a wholesale oriental medicine market; oriental medicines from all across the nation are brought to this market every five days starting from the 1st day of each month. The second floor has various oriental medicinal herbs on exhibition, as well as several interesting life-size displays depicting scenes such as taking a patient's pulse, slicing medicinal herbs, and brewing a pot of oriental medicine. The third floor provides venue for traditional cultural events

DT2 Daegu City Tour (KRW 43,000 P/P)

Bullo-Dong Tomb Park ⇒ Donghwasa Temple ⇒ Historic Site of General Shin



Donghwasa Temple : The temple was once used as the headquarters of the monk troops who fought against Hideyoshi's Invasion. The religious tradition of the nation guarding Korean Buddhism has lasted from the days of adopting Buddhism to this day. Donghwasa Temple was built in A.D. 439. There is Korea's largest statue of Buddha (Buddha Statue for unification) which stands 33m high and 16.5m wide. There are also five treasures including three-story Geumdang-am stone pagodas.

DT3 Daegu City Tour (KRW 45,000 P/P)

Nokdong Shrine ⇒ Herbhilz



Nokdong Shrine : Nokdong-seowon (Confucian Academy) is located in Urok-ri, Gachangmyeon. This academy was dedicated to General Kim Chung-seon who achieved great feats of arms during the periods of Hideyoshi's Invasion and the Manchurians's Invasions.

■ Full Day Tour

DT4 Gyeongju (KRW 80,000 P/P)

Seokuram Grotto' ⇒ Bulguksa Temple ⇒ Bomun Lake Resort ⇒ Gyeongju Folk Hadicraft Village ⇒ Cheomseonadae



Bulguksa Temple : Bulguksa Temple, built with a combination of stylish architecture, Buddhist spirit and natural surroundings, symbolizes Buddha's land on earth. The stone layers harmonize perfectly with the different structures, such as the several halls and the statues of Buddha within them. Bulguksa Temple was built in the 10th year of King Gyeongdeok, 751 A .D. by Kim Dae-seong, in memory of his parents. It was restored to its original condition in 1973.



Seokuram Grotto : Seokguram Grotto, constructed with stones, is a round-domed chamber and looks like an earth-covered cave. It is regarded as one of the world's masterpieces in Buddhist culture. The heavenly guardians and other statues surround the main Buddha statue in the center.

DT5 Mungyeong Saejae + Mungyeong Porcelain Exhibition Hall (KRW 70,000 P/P)

Mungyeong Saejae Provincial Park ⇒ Coal Museum ⇒ Mungyeong Porcelain Exhibition Hall



Mungyeong Saejae Provincial Park : Mungyeong Saejae was open during the reign of King Taejong of Chosun. King Seonjo built ramparts and barriers in 1594. The 1st, 2nd, 3rd barriers and rampart are designated as Historical Places No.147. They then became a popular place for sightseers after its restoration in 1976. Additionally, there are lots of things provided for tourists. Juhelgwan, Joryeongwan are at the first barrier, Jogokgwan, Hyeguksa at the second one, and Joryeongwan at the third one.



Mungyeong Porcelain Exhibition Hall : Where you can experience Coiling (Forming ceramic ware by coiling long rolls of clay until the desired shape had been attained) and wheel throwing (Shaping ceramic ware on a rotating wheel by placing a ball of clay in the center of the wheel and forming it into the desired shape). In addition, you can also make your own ceramic product.

DT6 Andong Hahoe Village + Byeongsan Seowon (KRW 70,000 P/P)
Andong Hahoe Village ⇒ Andong Folk Museum ⇒ Byeongsan Seowon (Confucian school) ⇒ Daegu City Tour

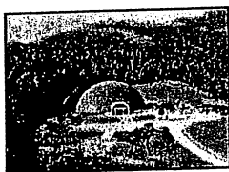


Andong Hahoe Village : Andong Hahoe Village has preserved the housing architecture and the village structure of the Joseon dynasty. Moreover, the village was not artificially created; there are people who actually live there. Hahoe Village is also famous for the Byeolsin exorcism, the mask dance and the Hahoe Mask. The Hahoe Byeongsan Mask is the oldest mask in Korea and is used in the Hahoe Mask Dance. Hahoe Village became famous from the visit of Queen Elizabeth in 1999. Many events featuring the Mask Dance are held.



Byeongsan Seowon : Byeongsan Seowon is a Confucian school that was established by esteemed Confucian scholars to pay tribute to the memory of Seong-nyong Yu (1542-1607), who was well-respected for his writings and personality. His mortuary tablet is enshrined at this school. Around the time of 1863, Confucian schools enjoyed many freedoms under the Joseon rule, students and scholars of the school were exempt from taxation and other expenses.

DT7 Haeinsa Temple + Museum of Daegaya Royal Tomb (KRW 70,000 P/P)
Museum of Daegaya Royal ⇒ Tomb Haeinsa Temple ⇒ Daegu City Tour



Museum of Daegaya Royal Tomb : The work for the establishment of the pavilion of Daegaya kings' tombs began in January of 1993. It was in September of 2000 that the pavilion was opened. This pavilion reproduced the inside of the Jisan-dong Tumulus No. 44. The Tumulus is, in large scale, an immolated burial tomb which was first identified in Korea. The pavilion was designed to enable visitors to enter the Tumulus which was constructed full scale.



Haeinsa Temple : Haeinsa Temple is a thousand year old temple situated in a thick forest and a clean valley. 8 hermitages, including the Geojoam, Baekheungam, and Unbuam, are under the control of the Temple. Tripitaka Koreana, designated as a World Culture Heritage by the UNESCO, is kept in it.

■ Post Tour

DT8 Jeju-do Tour (KRW 250,000~270,000 P/P)

The 1st day : Sangumburi Drater ⇒ Bijarim Forest

The 2nd day : The Bunjae Artpia ⇒ Jusangjeolri Seashore at Daepo Coast ⇒ Cheonjiyeon "Waterfall"
⇒ Jeju Folk Village Museum ⇒ Seopji-koji



Sangumburi Crater : Sangumburi is the only crater in Jeju island that is not sitting on top of a mountain but in the middle of a vast grassland. The crater is slightly larger than the Baengnokdam crater of Mt.Halla. Strangely, the crater never fills up with water no matter how much in rains. Also referred to as a treasure box of plants. It is a natural botanical garden. Golden eulelia fields decorate the autumn scenery.



Cheonjiyeon Waterfall : The waterfall falls from a precipice with thundering sounds, creating white water pillars. It has the name Cheonjiyeon, meaning 'the heaven and the earth meet and create a pond'. At 22 m in height and 12 m width, the waterfall tumbles down to the pond to produce awe-inspiring scenery. This place is also famous as home to the eel of *Anguilla mauritiana*, which is Natural Monument No. 27 and is active primarily at night.



Jeju Folk Village Museum : A reproduction of a traditional village on the Island. It has an area of 4,550 m² with a fishing village, outdoor exhibition of fishing tools, a stage for shaman rituals and the House of Intangible Cultural Properties. 81 traditional thatched roof houses form the village. There are a total of 117 buildings.



Seopji-koji : Jutting out at the eastern seashore of Jeju Island, Seopji-Koji is one of the most scenic views with the bright yellow canola and Seongsan Sunrise Peak as a backdrop. The pristine beauty of Jeju can be seen in Seopji-koji. Sinyang Beach, a meadow filled with canola flowers, peacefully grazing Jeju ponies, a rocky sea cliff, and a towering legendary large rock (Sunbawe) all combine to make nature's masterpiece. Unlike the other coastal areas of Jeju, it has red volcanic rock (songi) and strangely-shaped rocks that at low tide transform this area into a breath-taking stone exhibition gallery.

■ Tour Registration

- Ticket Reservation is available at tour desk
- All international credit card and cash are acceptance.
- All tour operate in English(Other language services are provided upon your requests)
- Official Tour Agency : "Tour Sketch" Tel : +82-1544-6203, Fax : +82-53-431-2100, E-mail : ihotel05@yahoo.co.kr

■ Daegu & General Information

- **Daegu** : Daegu metropolitan city is located at the center of southeast part of the Korean Peninsula and entering the new Millennium as a hub of Yeongnam area in Korea. It is a basin surrounded by mountains on all sides and has the Geumho River and Sincheon Stream running through the city. Judging from the plain and patternless earthenware excavated in this area.
- **Venue** : Daegu EXCO(Daegu Exhibition & Convention Center) is a modern exhibition and convention facility in Daegu, Korea. Since the opening in April 2001, it has organized and hosted more than 80 trade and public fairs and 700 international and national meetings.
- **Language** : The native language is Korean.
- **Climate** : Korea is blessed with a temperate climate and four clearly distinguished seasons. In autumn when the ICOM is held, Korea is at its most scenic with clear weather and blue sky and the mountains resplendent with autumnal tints. Daegu's average annual temperature is 13.7 degrees Celsius and its average rainfall is 1,027.7mm annually. During the congress in Daegu, the temperature is around 15°C, so some light outer will be helpful in this period.
- **Time Difference** : Korea Standard Time is 9 hours ahead of GMT.
- **Currency** : The unit of currency in Korea is the Won(₩) with coins of 10, 50, 100, 500 Won and the bills of 1,000, 5,000, 10,000 Won. One US\$ is equivalent to 1,005 Won approximately.
- **Credit Card** : VISA and Master Card are acceptable when you pay the on-site registration fee by credit card.
- **Transportation** : Shuttle bus service will be available for transportation between each hotel and EXCO Daegu.
- **Electricity** : Electricity in Korea is 220 Volts.
- **Visa and Passport** : Any foreign visitor wishing to enter Korea should have a valid passport and a visa. Visitors for sightseeing or transit with confirmed outbound tickets may stay in Korea up to 30 days without visas, except the followings :
 - a. Stateless Persons
 - b. Australia, Austria, Belgium, Bulgaria, Cambodia, Canada, China, Czech, Denmark, Ethiopia, Finland, France, Germany, Ghana, Greece, Hong Kong, Hungary, India, Israel, Italy, Japan, Macao, Mongolia, Nepal, Nigeria, Pakistan, Philippines, Portugal, Romania, Russia, Spain, Sri Lanka, Sweden, Switzerland, Taiwan, Thailand, United Kingdom, United States, Uzbekistan, Vietnam
- **Venue** : EXCO DAEGU(Convention & Exhibition Center) 1676 Sangyeok-2dong, Buk-gu, Daegu 702-845, Korea [http://www.excodaeu.co.kr\(Maps&Directions\)](http://www.excodaeu.co.kr(Maps&Directions))



附件四：台灣中醫藥發展策略，台灣中醫藥科技研究成果評析，台灣中醫藥研究暨防治 SARS 之成果分析中英文摘要

臺灣中醫藥發展策略

林宜信，謝伯舟，陳崇哲，康翠秀，羅淑慧

中華民國行政院衛生署中醫藥委員會

為順應世界潮流，回應及配合 WHO 對傳統醫藥之全球策略，行政院衛生署中醫藥委員會以中程施政計畫方式，擬訂「提昇中醫藥現代化與國際化發展方案」，架構下規劃四項計畫(1)建構中醫整體臨床教學體系，健全中醫師培育環境，辦理中醫醫事人員繼續教育計畫，以維護執業素質並提昇中醫醫療服務品質。(2)積極推動中醫藥現代化與國際化整合型計畫及中醫藥基因體相關研究計畫，以提昇中醫藥研究品質。(3)建構中藥用藥安全環境五年計畫，健全中藥臨床試驗環境，以建立中醫藥發展創新之環境，開創優質中醫藥產業。因前述全方位計畫，故執行迄今已成立 13 家「中藥臨床試驗中心」，並以類似美國 FDA 審核方式通過及核發新藥（中藥）藥證；建立中醫醫院訪查制度；傳統中藥廠全面實施 GMP；及公告出版台灣首部「中華中藥典」..等，以確保民眾就醫及用藥安全，使民眾得到更優質的中醫藥服務。

關鍵詞：中醫藥、發展策略、中程計畫

The Development Strategy of Taiwan's Chinese Medicine and Pharmacy

Lin I-Hsin, Hsieh Po-Chow, Chen Chung-Tse, Kang Tsui-Hsiu, Lo Shu-Hui
Committee on Chinese Medicine and Pharmacy, Department of Health, Executive Yuan, R.O.C

Abstract

Background and Aims :

With a mid-term administration planning, the Committee on Chinese Medicine and Pharmacy has formulated a "development project to promote the modernization and internationalization of Chinese medicine and pharmacy" to follow the world trend as well as response to and comply with WHO's global strategy on traditional medicine and pharmacy.

Materials and Methods :

Four plans are included in the development project: (1) to establish an integrated clinical teaching system of Chinese medicine, provide a sound environment to educate and train Chinese medicine doctors, develop advanced education programs for Chinese medicine personnel, secure Chinese Medicine's practice quality and improve Chinese medicine's service quality. (2) to actively promote the integrated project to modernize and internationalize Chinese medicine and (3) implement research programs related to genome study, so as to improve the research quality of Chinese medicine and Pharmacy. (4) to formulate a 5-year plan to build a safe environment for Chinese medicine application and create a sound environment for Chinese medicine clinical trials, so as to establish an innovative environment for the development of Chinese medicine and pharmacy and create quality medical and pharmaceutical industries.

Results and Conclusions :

With the above project, thirteen "Chinese Medicine Clinical Trials Centers" have been established. They adopt procedures similar to those employed by the FDA in the U.S., to evaluate and approve new medicine (Chinese medicine) registration. At the same time, a Chinese medicine hospital survey system has been established. GMP accreditation on traditional Chinese medicine manufacturers has been carried out across the board. Taiwan's first "Pharmacopoeia of Chinese Medicine" has been published. The positive development will assure the public's safe medical treatment and medicine application and provide better Chinese medicine and pharmacy service.

Key words: Chinese Medicine and Pharmacy, Development strategy, Mid-term planning

臺灣中醫藥科技研究成果評析

謝伯舟，林宜信，康翠秀，林育娟，張麗晴，羅淑慧

中華民國行政院衛生署中醫藥委員會

摘要

行政院衛生署中醫藥委員會為台灣中醫藥之最高專責主管機關，該會多年來由有系統的進行中醫藥及相關研究，以確保中醫藥適當、安全且有效地使用。在規劃中綱計畫書之研究方向時，每年召開數次諮詢會議，會先聘請產官學研界菁英擔任科技諮詢委員提供建議，研究計畫之研擬採中程計畫方式，並結合本會業務需要與工作目標，共同擬定研究重點。目前本會執行二項科技中程計畫「中醫藥現代化與國際化之整合型計畫」及「中醫藥之基因體相關研究計畫」(挑戰 2008)，其執行重點包括：(1) 提昇中藥品質水準研究；(2) 健全中藥審查法規及臨床試驗環境；(3) 推動中醫藥相關研究；(4) 提昇中醫藥醫療品質研究；(5) 中醫基因體研究(對癌症、肝病、及感染等研究)。該會為提昇中醫藥研究品質，所有計畫皆依所訂定計畫審查程序及管考作業流程四階段十三步驟，並將此作業流程列入 ISO 標準程序書，以提昇行政效能；衛生署並對所屬機關及相關局處之研究成果進行管考，衛生署中醫藥委員會因計畫執行績效卓越，已連續三年獲得考列甲等。自 1996 年至 2005 年該會研究計畫共執行 676 項計畫，除將究成果轉為實務政策執行、申請專利及發表論文外，另將研究成果出版專書，頗獲好評，並獲多項獎項。

關鍵詞：中醫藥、科技研究、計畫管考

Evaluation and Analysis of research results of Taiwan's Chinese Medicine and Pharmacy Technology

Hsieh Po-Chow, Lin I-Hsin, Kang Tsui-Hsiu, Lin Yu-Chuan, Cheng LI-Qing, Lo Shu-Hui
Committee on Chinese Medicine and Pharmacy, Department of Health, Executive Yuan, R.O.C

Abstract

Background and Aims :

The Committee on Chinese medicine and Pharmacy is the highest competent authority in Taiwan to administer Taiwan's Chinese medicine and pharmacy. For many years, the Committee on Chinese medicine and Pharmacy under the Department of Health has proceeded with medicine and relevant studies, so as to assure the Chinese medicine and pharmacy to be appropriately, safely and effectively applied. When the Committee works on the study directions of a project, several consultation meetings are to be held annually and the elites from manufacturing, governmental and academic circles are to be recruited as the technological consulting committee members to provide their expertise. Mid-term plans are to be used for research projects, and research key points are to be envisaged by combining the Committee's business requirements and project objective.

Materials and Methods :

The Committee has currently executed two mid-term technological projects: "The integration plan of Chinese medicine and pharmacy with modernization and internationalization" and "the research relating to the gene of Chinese medicine and pharmacy" (included in the Challenge 2008 six-year national development plan). Their execution focus has been placed on: (1) the research to upgrade Chinese medicine quality; (2) to integrate the regulations of Chinese medicine investigation and evaluation, and build a sound clinical trials environment; (3) to promote Chinese medicine and pharmacy related studies; (4) the research to escalate the medical quality of Chinese medicine and pharmacy; (5) the research of the gene of Chinese medicine (the studies for cancers, liver diseases, and infection, etc).

Results and Conclusions :

In order to exalt the quality of Chinese medicine and pharmacy research, the Committee has complied with the process of examination procedures and supervision as well as evaluation operation stipulated for its projects covering four phases and thirteen steps, and included the operational process in the ISO standard procedure instruction so as to enhance administrative efficiency. At the same time, the Department of Health is in charge of supervision and evaluation for the results of the research conducted by its subordinate units and related bureaus. Due to its excellent implementation performance, the Committee on Chinese Medicine and Pharmacy has earned "A-grade" for three consecutive years. For 1996 through 2005, it has accomplished 676 research projects. In addition to converting the research results into practical implementation, patent application and discourse release, the research results have also been edited as books to publish. Such a move has made the Committee on Chinese Medicine and Pharmacy earn its good reputation and reap numerous awards.

Key words: Chinese medicine and pharmacy, Technological research, Plan supervision and evaluation

台灣中醫藥研究暨防治SARS之成果分析

林宜信、謝伯舟、康翠秀、俞怡君

中華民國行政院衛生署中醫藥委員會

摘 要

我國政府為因應 2003 年爆發之 SARS 危機，經立法院通過約 16 億美元之「嚴重急性呼吸道症候群防治及紓困特別預算」；其中約 6 仟萬美元執行『SARS 專案研究計畫』；並以總統令核定公布「嚴重急性呼吸道症候群防治及紓困特別預算審查報告（修正本）」，依該報告「為防止中醫、中藥業者造成 SARS 防疫漏洞，有關中醫、中藥從業人員防疫之教育訓練等經費約 160 萬美元」。並在 SARS 專案研究計畫下，特別成立『中醫藥學組』；經該組配合審核，共通過執行 38 項個別型和整合型計畫，其中包括行政院衛生署中醫藥委員會執行『中醫藥防治嚴重急性呼吸道症候群（SARS）之教育訓練暨宣導計畫』。該計畫為督導及支援國科會 SARS 防治計畫「中醫藥學組」等相關事宜，此計畫執行結果豐碩，計包括：辦理 39 場次中醫藥相關專業人員對 SARS 教育防治訓練研討會，總參與人數達 9000 人；另建置「中醫藥防治 SARS 嚴重急性呼吸道症候群相觀點及資訊網」，並出版中醫藥防治 SARS 手冊及防治 SARS 教育宣導影音光碟書；該書業送中醫藥相關公會、單位及各縣市衛生局等單位參考，而光碟書並榮獲我國政府出版服務評獎第壹名，藉由此計畫已將中醫藥界建置成一個防治傳染病之網絡。

關鍵詞：中醫藥、SARS(嚴重急性呼吸道症候群)、防疫

Research of Taiwan's Chinese Medicine and Pharmacy as well as Result Analysis of SARS Prevention

Lin I-Hsin, Hsieh Po-Chow, Kang Tsui-Hsiu, Yu Yi-Jun

Committee on Chinese Medicine and Pharmacy, Department of Health, Executive Yuan, R.O.C

Abstract

Background and Aims :

In order to counter the SARS crisis broke out in 2003, out of the US\$1.6 billion passed by Legislative Yuan as "the special budget for the prevention and relief of SARS (Severe Acute Respiratory Syndrome)", our Government has allocated about US\$60 million for the execution of "SARS Research project". As decreed by the President, the "evaluation report (the modified version) of the special budget for the prevention and relief of SARS" was approved and announced. As indicated in the report that "in order to prevent the SARS prevention loophole made by the trade of Chinese medicine and pharmacy, about US\$1.6 million is to be appropriated for the educational training of Chinese medicine and pharmacy attendants on epidemic prevention", and under the "SARS research project", a "task force of Chinese Medicine and pharmacy" has been established.

Materials and Methods :

With the task force involving in examination and evaluation, 38 individual and integrated projects were approved and executed, including the "educational training and promotional project for the prevention of SARS with Chinese medicine and pharmacy". This project was used to supervise and support the issues regarding the "task force of Chinese medicine and pharmacy" of National Science Council's SARS prevention plan.

Results and Conclusions :

The execution results of this plan were outstanding, 39 seminars were held to educate and train professional Chinese medicine and pharmacy attendants for SARS prevention, and as many as 9,000 participators attended the seminars. In addition, "the overview and information network of SARS prevention with Chinese medicine and pharmacy" has been constructed, and manuals of SARS prevention with Chinese medicine and pharmacy as well as audio-visual disc books to educate and promote SARS prevention have been published. They have been distributed to the associations, units and county/city public health bureaus relating to Chinese medicine and pharmacy for reference. The disc book was awarded by our government with the first place prize for the publication service. With this project, a network of Epidemic prevention has been established in the Chinese medicine and pharmacy sector.

Key words: Chinese medicine and pharmacy, SARS (Severe Acute Respiratory Syndrome). Epidemic prevention

Evaluation and Analysis of research results of Taiwan's Chinese Medicine and Pharmacy Technology

Hsieh Po-Chow, Lin I-Hsin, Kang Tsui-Hsiu, Lin Yu-Chuan, Cheng LI-Qing, Lo Shu-Hui
Committee on Chinese Medicine and Pharmacy, Department of Health, Executive Yuan, R.O.C

Abstract

Background and Aims :

The Committee on Chinese medicine and Pharmacy is the highest competent authority in Taiwan to administer Taiwan's Chinese medicine and pharmacy. For many years, the Committee on Chinese medicine and Pharmacy under the Department of Health has proceeded with medicine and relevant studies, so as to assure the Chinese medicine and pharmacy to be appropriately, safely and effectively applied. When the Committee works on the study directions of a project, several consultation meetings are to be held annually and the elites from manufacturing, governmental and academic circles are to be recruited as the technological consulting committee members to provide their expertise. Mid-term plans are to be used for research projects, and research key points are to be envisaged by combining the Committee's business requirements and project objective.

Materials and Methods :

The Committee has currently executed two mid-term technological projects: "The integration plan of Chinese medicine and pharmacy with modernization and internationalization" and "the research relating to the gene of Chinese medicine and pharmacy" (included in the Challenge 2008 six-year national development plan). Their execution focus has been placed on: (1) the research to upgrade Chinese medicine quality; (2) to integrate the regulations of Chinese medicine investigation and evaluation, and build a sound clinical trials environment; (3) to promote Chinese medicine and pharmacy related studies; (4) the research to escalate the medical quality of Chinese medicine and pharmacy; (5) the research of the gene of Chinese medicine (the studies for cancers, liver diseases, and infection, etc).

Results and Conclusions :

In order to exalt the quality of Chinese medicine and pharmacy research, the Committee has complied with the process of examination procedures and supervision as well as evaluation operation stipulated for its projects covering four phases and thirteen steps, and included the operational process in the ISO standard procedure instruction so as to enhance administrative efficiency. At the same time, the Department of Health is in charge of supervision and evaluation for the results of the research conducted by its subordinate units and related bureaus. Due to its excellent implementation performance, the Committee on Chinese Medicine and Pharmacy has earned "A-grade" for three consecutive years. For 1996 through 2005, it has accomplished 676 research projects. In addition to converting the research results into practical implementation, patent application and discourse release, the research results have also been edited as books to publish. Such a move has made the Committee on Chinese Medicine and Pharmacy earn its good reputation and reap numerous awards.

Key words: Chinese medicine and pharmacy, Technological research, Plan supervision and evaluation

台灣中醫藥研究暨防治SARS之成果分析

林宜信、謝伯舟、康翠秀、俞怡君

中華民國行政院衛生署中醫藥委員會

摘 要

我國政府為因應 2003 年爆發之 SARS 危機，經立法院通過約 16 億美元之「嚴重急性呼吸道症候群防治及紓困特別預算」；其中約 6 仟萬美元執行『SARS 專案研究計畫』；並以總統令核定公布「嚴重急性呼吸道症候群防治及紓困特別預算審查報告（修正本）」，依該報告「為防止中醫、中藥業者造成 SARS 防疫漏洞，有關中醫、中藥從業人員防疫之教育訓練等經費約 160 萬美元」。並在 SARS 專案研究計畫下，特別成立『中醫藥學組』；經該組配合審核，共通過執行 38 項個別型和整合型計畫，其中包括行政院衛生署中醫藥委員會執行『中醫藥防治嚴重急性呼吸道症候群（SARS）之教育訓練暨宣導計畫』。該計畫為督導及支援國科會 SARS 防治計畫「中醫藥學組」等相關事宜，此計畫執行結果豐碩，計包括：辦理 39 場次中醫藥相關專業人員對 SARS 教育防治訓練研討會，總參與人數達 9000 人；另建置「中醫藥防治 SARS 嚴重急性呼吸道症候群相觀點及資訊網」，並出版中醫藥防治 SARS 手冊及防治 SARS 教育宣導影音光碟書；該書業送中醫藥相關公會、單位及各縣市衛生局等單位參考，而光碟書並榮獲我國政府出版服務評獎第壹名，藉由此計畫已將中醫藥界建置成一個防治傳染病之網絡。

關鍵詞：中醫藥、SARS(嚴重急性呼吸道症候群)、防疫

Research of Taiwan's Chinese Medicine and Pharmacy as well as Result Analysis of SARS Prevention

Lin I-Hsin, Hsieh Po-Chow, Kang Tsui-Hsiu, Yu Yi-Jun

Committee on Chinese Medicine and Pharmacy, Department of Health, Executive Yuan, R.O.C

Abstract

Background and Aims :

In order to counter the SARS crisis broke out in 2003, out of the US\$1.6 billion passed by Legislative Yuan as "the special budget for the prevention and relief of SARS (Severe Acute Respiratory Syndrome)", our Government has allocated about US\$60 million for the execution of "SARS Research project". As decreed by the President, the "evaluation report (the modified version) of the special budget for the prevention and relief of SARS" was approved and announced. As indicated in the report that "in order to prevent the SARS prevention loophole made by the trade of Chinese medicine and pharmacy, about US\$1.6 million is to be appropriated for the educational training of Chinese medicine and pharmacy attendants on epidemic prevention", and under the "SARS research project", a "task force of Chinese Medicine and pharmacy" has been established.

Materials and Methods :

With the task force involving in examination and evaluation, 38 individual and integrated projects were approved and executed, including the "educational training and promotional project for the prevention of SARS with Chinese medicine and pharmacy". This project was used to supervise and support the issues regarding the "task force of Chinese medicine and pharmacy" of National Science Council's SARS prevention plan.

Results and Conclusions :

The execution results of this plan were outstanding, 39 seminars were held to educate and train professional Chinese medicine and pharmacy attendants for SARS prevention, and as many as 9,000 participators attended the seminars. In addition, "the overview and information network of SARS prevention with Chinese medicine and pharmacy" has been constructed, and manuals of SARS prevention with Chinese medicine and pharmacy as well as audio-visual disc books to educate and promote SARS prevention have been published. They have been distributed to the associations, units and county/city public health bureaus relating to Chinese medicine and pharmacy for reference. The disc book was awarded by our government with the first place prize for the publication service. With this project, a network of Epidemic prevention has been established in the Chinese medicine and pharmacy sector.

Key words: Chinese medicine and pharmacy, SARS (Severe Acute Respiratory Syndrome). Epidemic prevention